

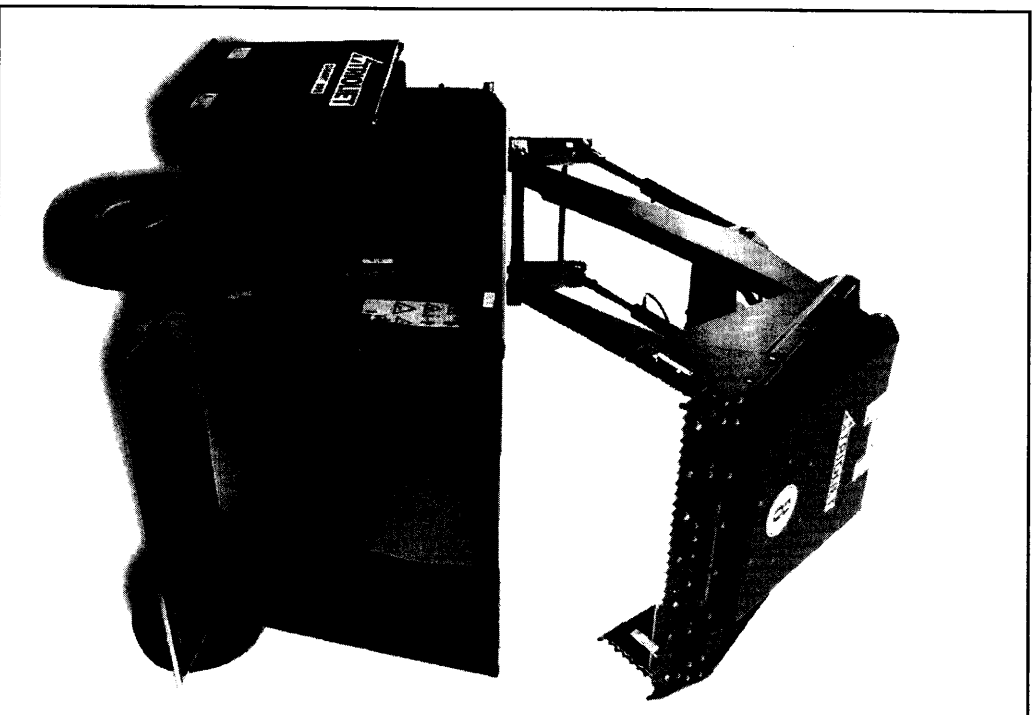
Trioliet Mullos

Meng-doseerwagen

Futter-, Misch- und Verteilwagen

Feeder Mixer

GIGANT 500



Onderdelen- en Werkplaatshandboek
Ersatzteilliste und Werkstatthandbuch
Spare parts list and workshop manual

Bestelnummer / Bestellnummer / Ordernummer 92193

Geldig vanaf productieserie nr. / Gültig ab / Valid from prod. Series No.: 01

INHOUDSOPGAVE

Afb.	
1.	Stickers
2.	Frame
3.	Dissel
4.	Mengvijzel en aandrijving
5.	Wielstel
6.	Laadarm en snijbord
7.	Messysteem
8.	Stuurblok uitwendig
9.	Stuurblok inwendig
10.	Achter- en zijmescilinder
11.	Intrekcilinder
12.	Aanzetcilinder
13.	Doseerklep- en wielarmcilinder
14.	Handventielen
15.	Mechanische bediening
16.	Elektrische bediening
17.	Hydraulische weeginstallatie
18.	Weegcilinder
19.	Elektronische weeginstallatie
20.	Slangenschema handbediening
21.	Slangenschema mech. bediening
22.	Slangenschema elektr. bediening
23.	Aansluitschema bedieningskast
24.	Aftakas

INHALTSVERZEICHNIS

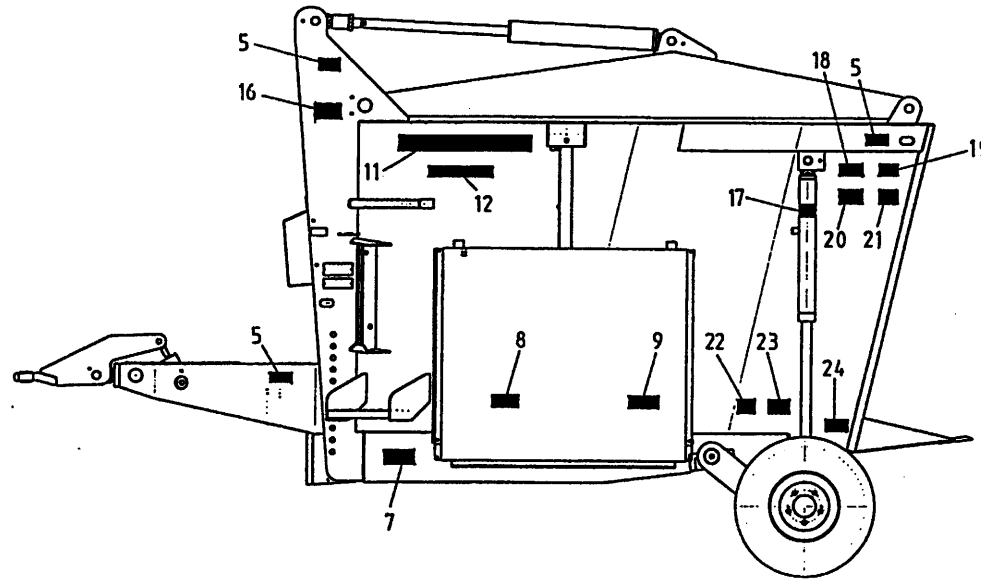
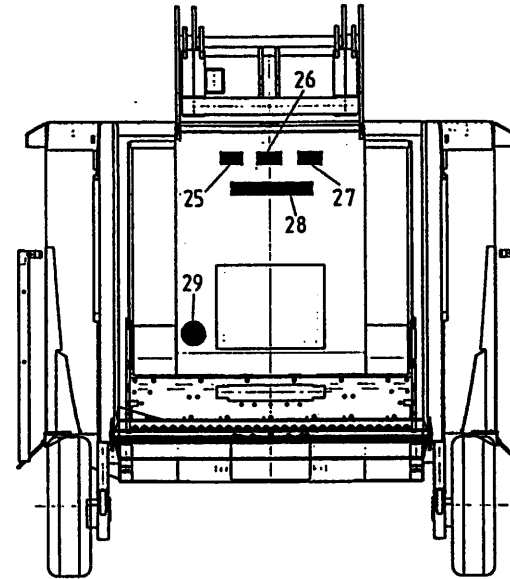
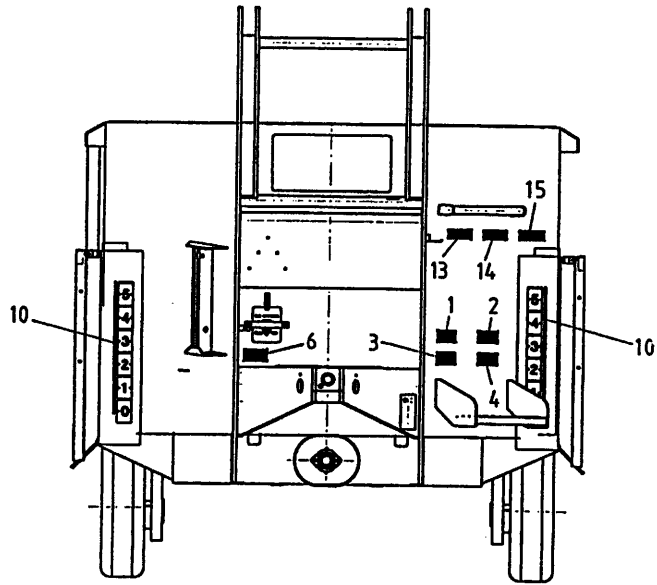
Abb.	
1.	Aufkleber
2.	Rahmen
3.	Deichsel
4.	Schnecke und Antrieb
5.	Radachse
6.	Ladeschwinge und Schneidplatte
7.	Schneidvorrichtung
8.	Umschaltventil und Schlauche
9.	Steuerblock Innenseite
10.	Heck- und Seitenmesserzylinder
11.	Ladezylinder
12.	Vorschubzylinder Schneiden
13.	Dosierklappe und Radarmzylinder
14.	Handventilen
15.	Mechanische Fernbediening
16.	Elektrischer Fernbediening
17.	Hydraulischer Wiegeeinrichtung
18.	Wiegezylinder
19.	Elektronischer Wiegeeinrichtung
20.	Schaltplan Handbediening
21.	Schaltplan Mech. Fernbediening
22.	Schaltplan Elektr. Fernbediening
23.	Schaltplan Bedienungskasten
24.	Gelenkwelle

CONTENS

Pic.	
1.	Decals
2.	Frame
3.	Drawbar
4.	Auger and drive system
5.	Wheelaxle
6.	Loading arm and cutting board
7.	Cutting system
8.	Control block and hoses
9.	Control block
10.	Cutting cylinders
11.	Loading cylinder
12.	Main cylinder cutting
13.	Unload. door and wheelaxle cylinder
14.	Manual control
15.	Mechanical remote control
16.	Electrical remote control
17.	Hydraulic weighing system
18.	Weighing cylinder
19.	Electronic weighing system
20.	Hose-scheme manual control
21.	Hose-scheme mech. remote control
22.	Hose-scheme electr. remote control
23.	Scheme electrical controlbox
24.	PTO shaft

92193

Afbeelding 1 : Stikker
 Abbildung 1 : Aufkleber
 Picture 1 : Decals

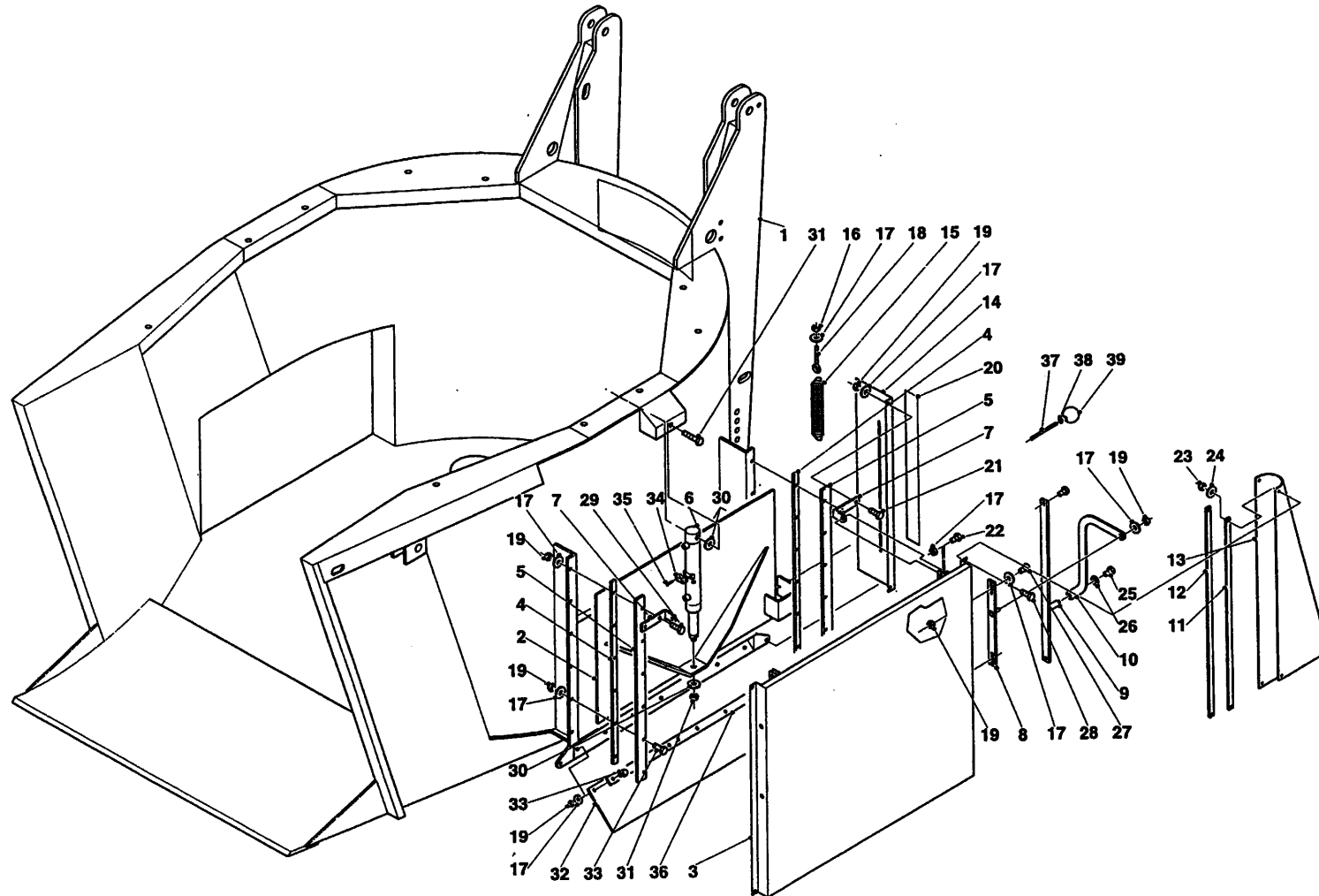


bestelnummer
 ordernummer
 Num. à commander
 Bestellnummer

1	91159	1	
2	91160	1	
3	91185	1	
4	91215	1	
5	91183	6	
6	91118	1	
7	91333	2	
8	91211	2	
9	91327	2	
10	91143	2	
11	91249	2	
12	91357	2	
13	91242	1	
14	91240	1	
15	91245	1	
16	91151	2	
17	91182	1	
18	91164	2	
19	91172	2	
20	91161	2	
21	91337	2	
22	91228	2	
23	91323	2	
24	91325	2	4.0 bar
25	91163	1	
26	91189	1	
27	91153	1	
28	91247	1	
29	91331	1	8 kmh

92193

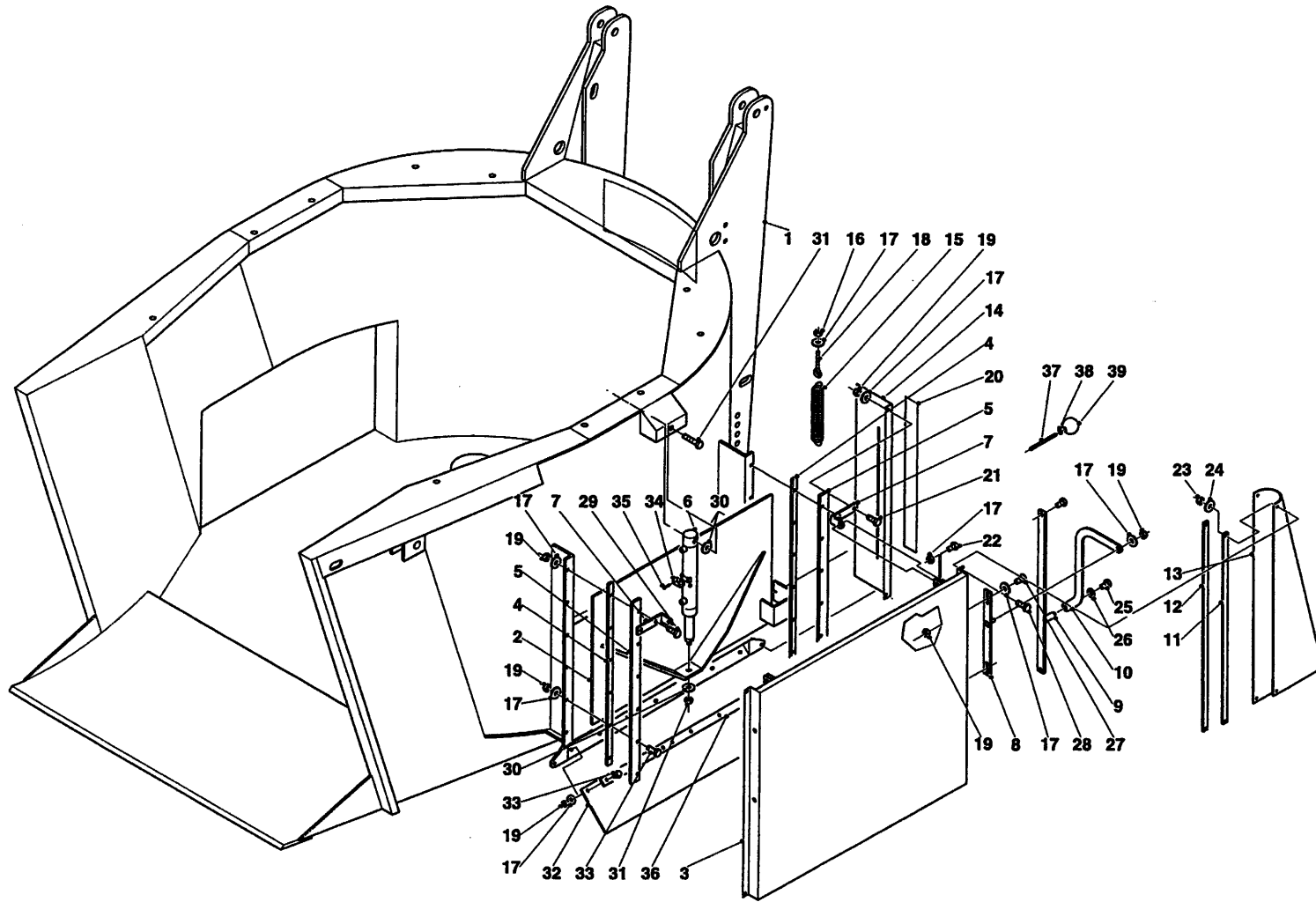
Afbeelding 2 : Frame
 Abbildung 2 : Rahmen
 Picture 2 : Frame



bestelnummer		ordernummer	
Num. à commander		Bestellnummer	
1	12925	1	
2A	12981	1	Rechts
2B	12982	1	Links
3	13105	1	
4	28808	4	
5	28809	4	
6	51202	2	
7	28814	4	
8	12591	2	
9	12604	2	
10	29241	2	
11	29243	4	
12	29242	4	
13A	60407	2	RV/LA
13B	60408	2	RA/LV
14	40666	2	
15	65021	2	
16	86210	2	M10
17	85110	74	M10
18	84174	2	M10 x 80 x 14
19	86210	48	M10
20	91143	2	
21	80831	4	M8 x 30
22	81040	4	M10 x 40
23	86208	12	M8
24	85108	12	M8
25	80812	2	M8 x 12
26	85109	2	M8
27	81025	4	M10 x 25
28	80821	8	M8 x 20
29	81045	4	M10 x 45
30	85116	1	M16
31	81680	1	M16 x 80
32	60399	1	

92193

Afbeelding 2 : Frame
Abbildung 2 : Rahmen
Picture 2 : Frame

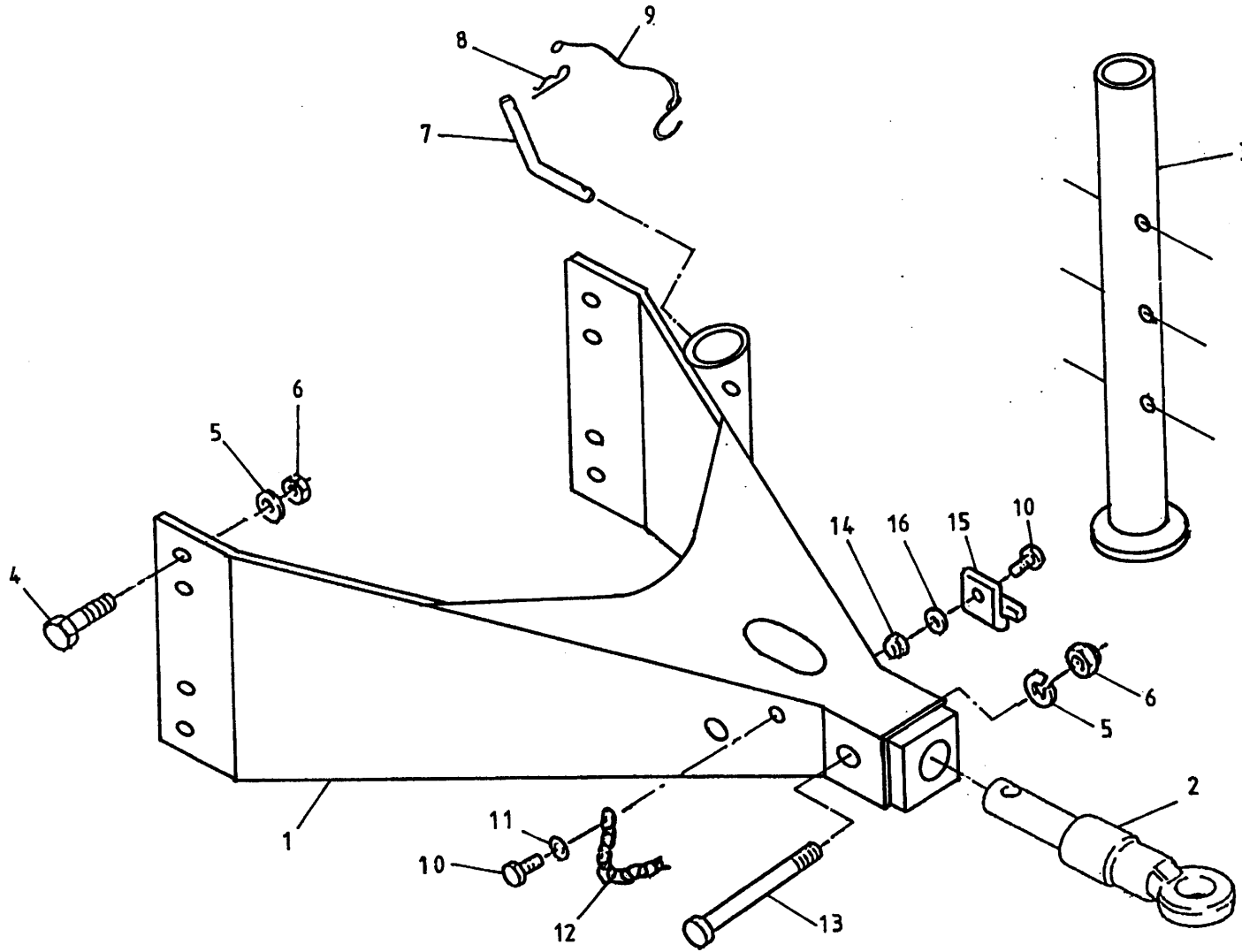


bestelnummer
ordernummer
Num. à commander
Bestellnummer

33	81036	34	M10 x 35
34	90721	1	
35	84410	2	M6 x 30
36	28813	1	
37	84947	2	M6 x 100
38	86106	2	M6
39	60368	2	

92193

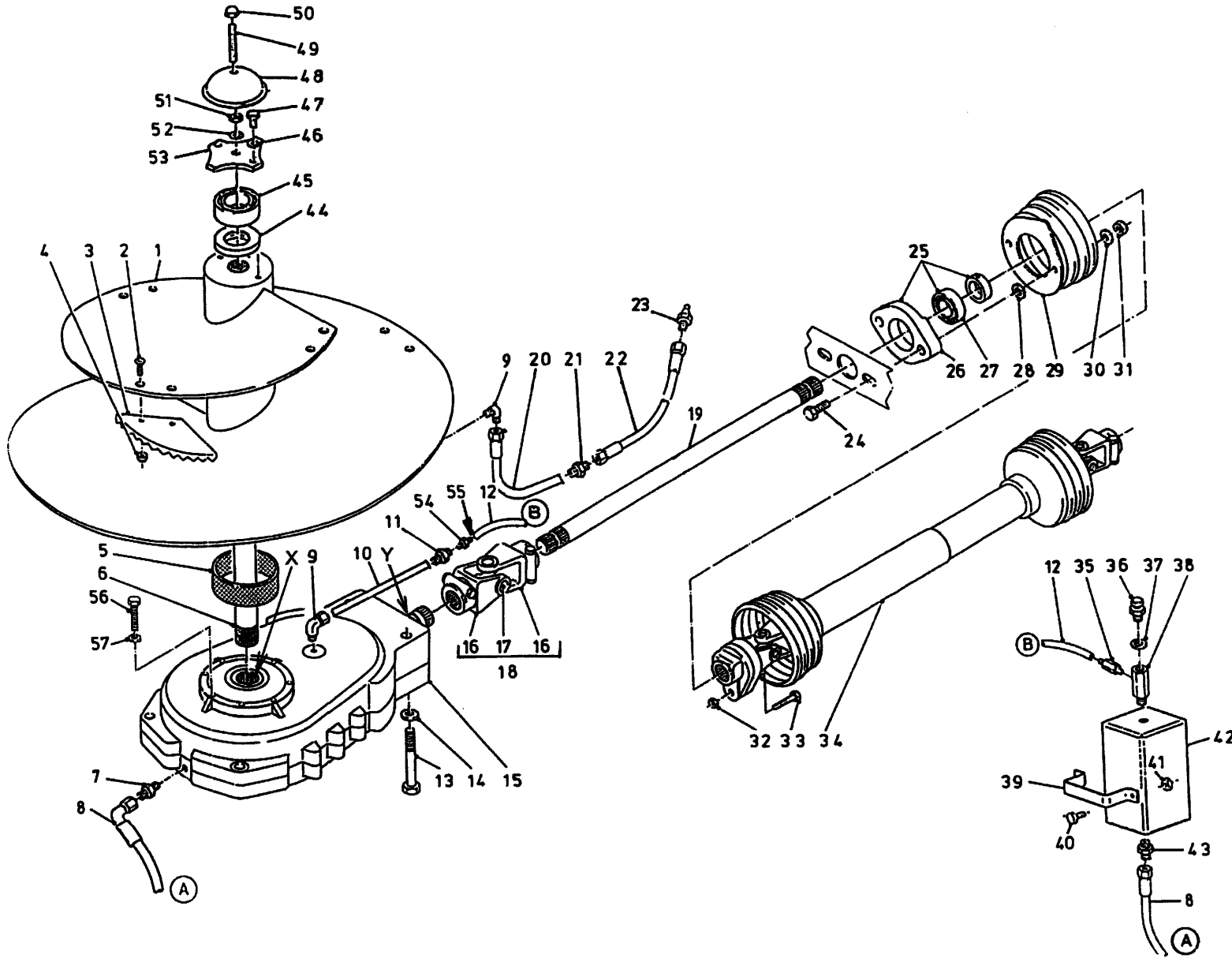
Afbeelding 3 : Dissel
 Abbildung 3 : Deichsel
 Picture 3 : Drawbar



bestelnummer		ordernummer	
Num. à commander		Bestellnummer	
1	13078	1	
2	12380	1	
3	11356	1	
4	82061	8	M20 x 60 8.8
5	85120	9	M20
6	86220	9	M20
7	31236	1	
8	65004	1	
9	90282	1	
10	80831	2	M8 x 30
11	85109	1	M8
12	39136	1	
13	82013	1	M20 x 130 12.9
14	86208	2	M8
15	24528	1	M8
16	85108	1	

92193

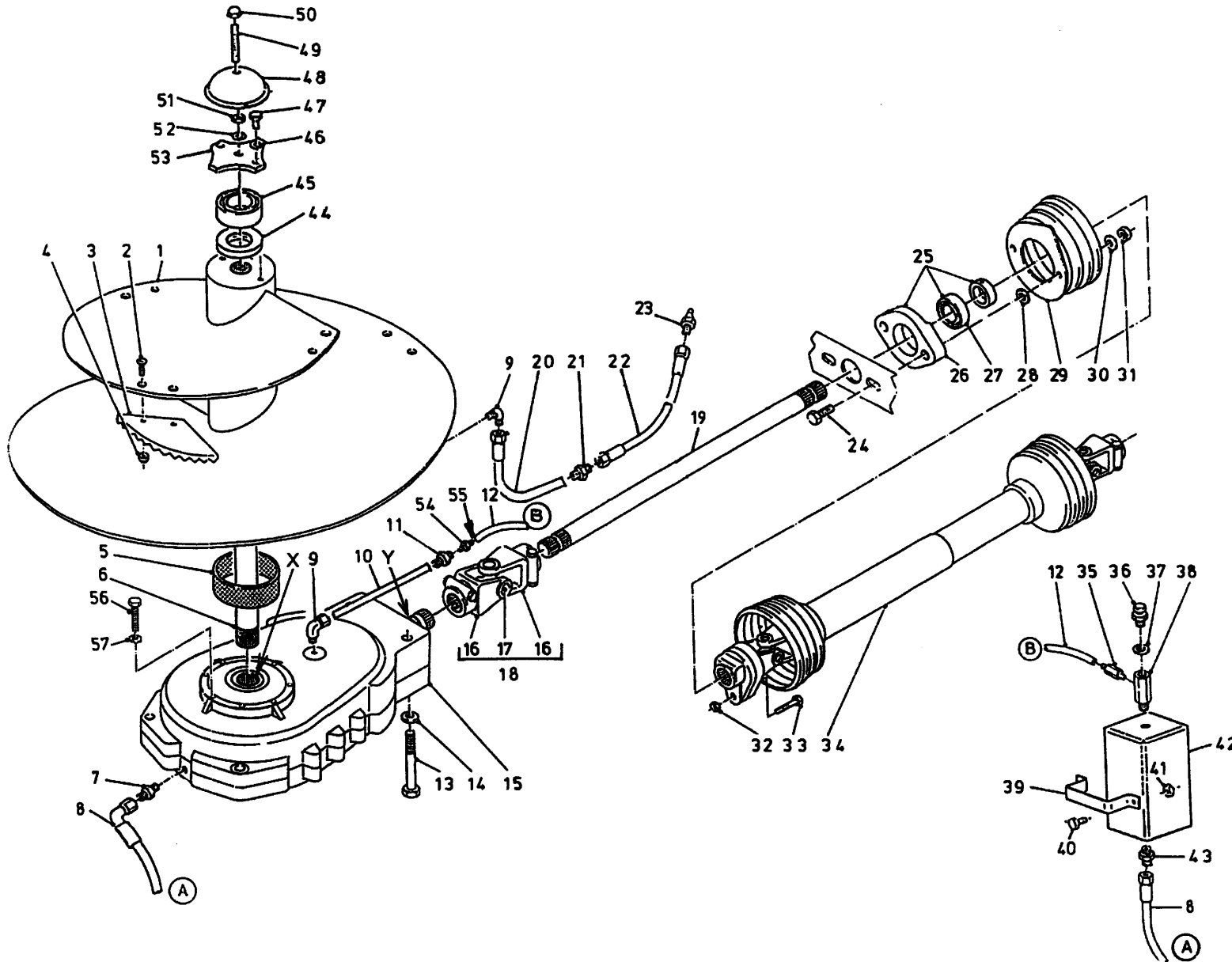
Afbeelding 4 : Mengvijzel en aandrijving
 Abbildung 4 : Schnecke und Antrieb
 Picture 4 : Auger and drive system



bestelnummer		ordernummer	
Num. à commander		Bestellnummer	
1	13114	1	
2	84121	6	M16 x 45
3	31841	3	
4	86216	6	M16
5	51894	1	
6	32327	1	
7	X50112	1	
8	W50665	1	3/8" 1850 RH
9	50120	2	
10	52680	1	
11	50432	1	
12	52673	1	Ø8 L=2000
13	81051	8	M10 x 50
14	85010	8	M10
15	94001	1	
16	94050	2	
17	94045	1	
18	94044	1	
19	32063	1	1 3/8"-6 L=340
20	52666	1	
21	50275	1	
22	50957	1	1/4" 1520 RR
23	89518	1	
24	81071	2	M10 x 70
25	70059	1	
26	70089	1	
27	70090	1	
28	85010	2	M10
29	90499	1	
30	85113	2	M10
31	86110	2	M10
32	86208	1	M8
33	80860	1	M8 x 60
34	90797	1	

92193

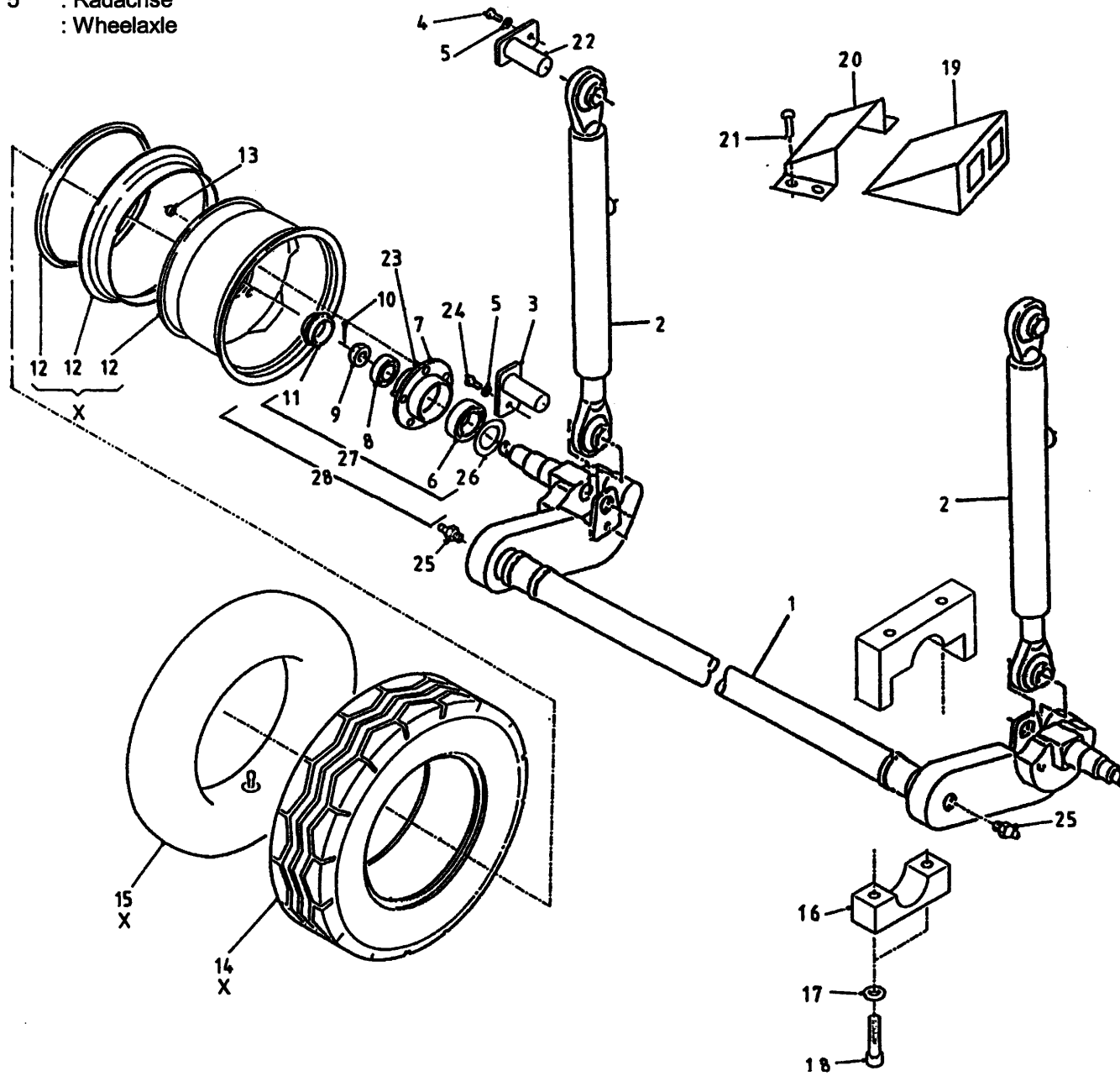
Afbeelding 4 : Mengvijzel en aandrijving
 Abbildung 4 : Schnecke und Antrieb
 Picture 4 : Auger and drive system



bestelnummer			
ordernummer			
Num. à commander			
Bestellnummer			
35	50285	1	
36	90567	1	
37	85215	1	
38	50176	1	
39	28845	1	
40	80831	2	M8 x 30
41	86208	2	M8
42	90974	1	
43	X50112	1	
44	70177	1	
45	70176	1	
46	85012	2	M12
47	81231	2	M12 x 30
48	29209	1	
49	84072	1	M16 x 120
50	86937	1	M16
51	86116	1	M16
52	85016	1	M16
53	29210	1	
54	50286	1	
55	50278	1	Ø8 x Ø6
56	81060	8	M10 x 60
57	85010	8	M10
X	70187	1	90x110x12
Y	70126	1	35x72x10

92193

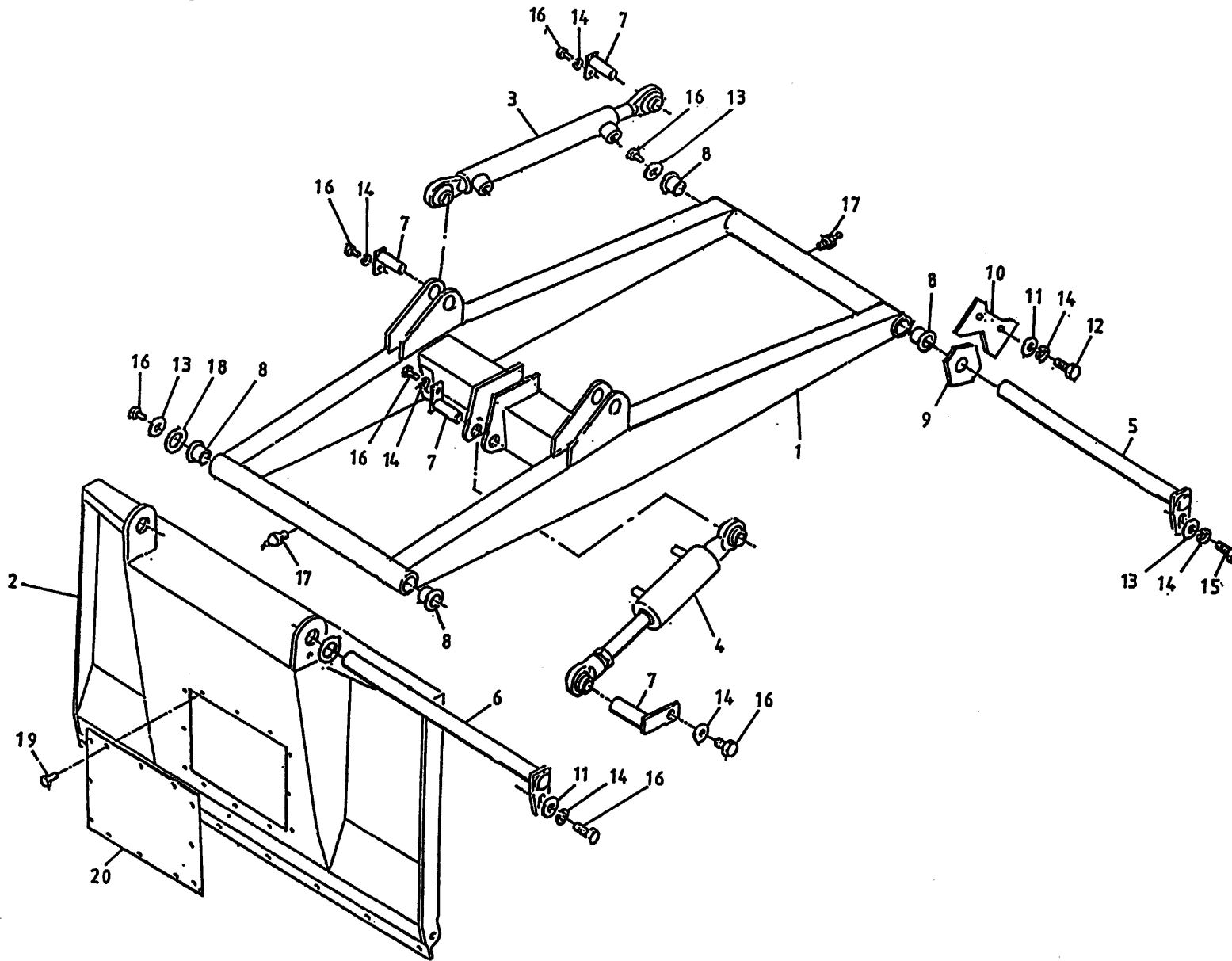
Afbeelding 5 : Wielstel
 Abbildung 5 : Radachse
 Picture 5 : Wheelaxle



bestelnummer		ordernummer		Num. à commander		Bestellnummer	
1	12930	1					
2	51205	2					
3	11980	2					
4	81021	2	M10 x 20				
5	85010	5	M10				
6	70147	2	30209				
7	90778	2					
8	70138	2	30206				
9	90780	2					
10	88240	2	Ø4 x 40				
11	90781	2					
12	90848	2	5.00 x 10				
13	86934	10	M16 x 1.5				
14	90849	2	24 x 7.7				
15	90850	2					
16	12931	2					
17	85016	4					
18	84459	4	M16 x 70				
19	90396	2					
20	90397	2					
21	84717	4	M6 x 12				
22	12418	2					
23	84943	10	M16 x 1.5 L=45				
24	84942	2	M10 x 16				
25	89521	2	3/8"				
26	90779	2					
27	90777	2	Complete				
28	94047	2	50x50 L=300				
X	90837	2	24 x 7.7 10				

92193

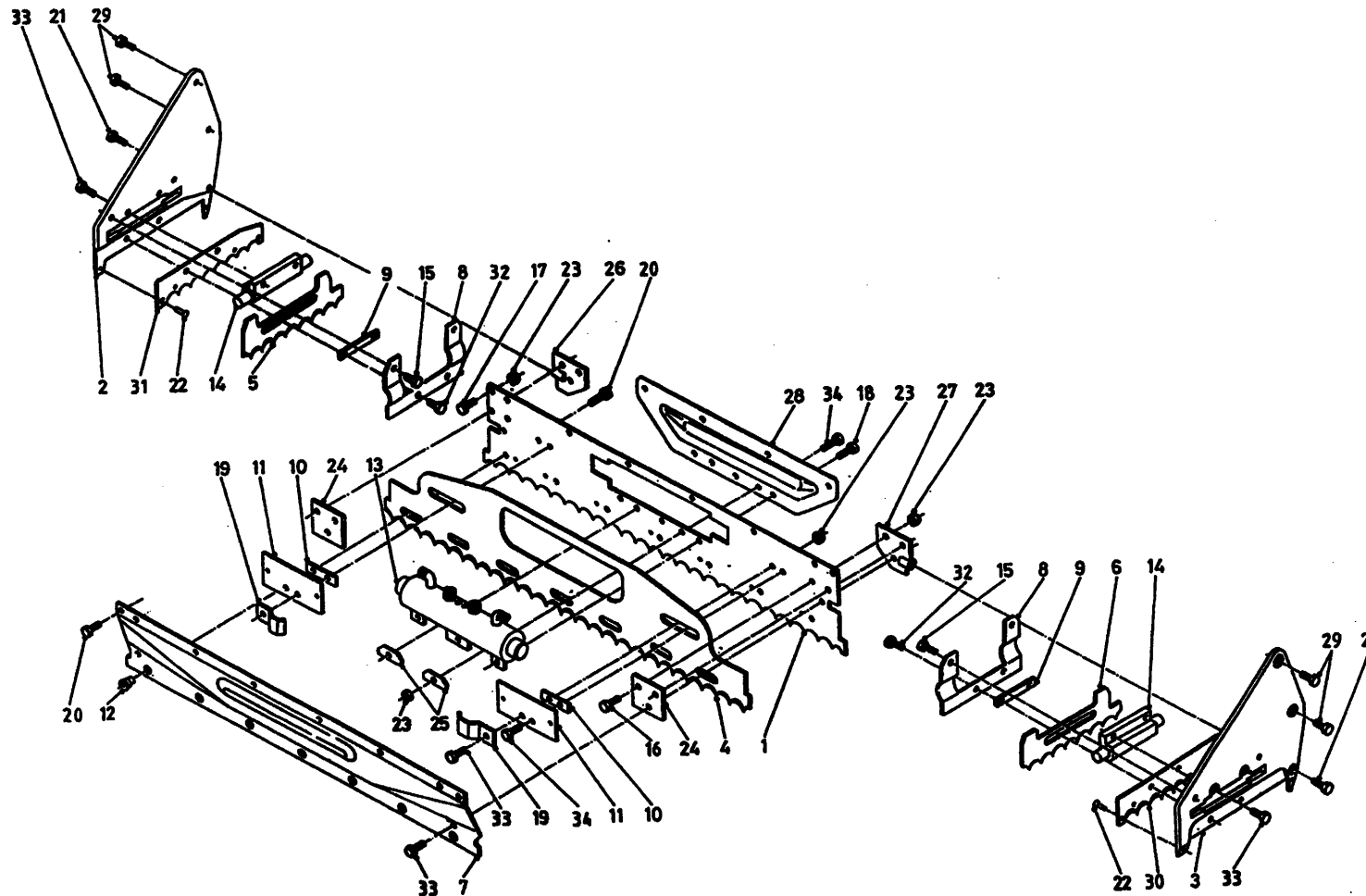
Afbeelding 6 : Laadarm en snijbord
 Abbildung 6 : Ladeschwinge und Schneidplatte
 Picture 6 : Loading arm and cutting board



bestelnummer		ordernummer	
Num. à commander		Bestellnummer	
1	12933	1	
2	12938	1	
3	51204	2	
4	51201	1	
5	12956	1	
6	12932	1	
7	11936	6	
8	51751	4	
9	32251	2	
10	28689	2	
11	85112	3	M12
12	81241	3	M12 x 40
13	85137	2	M12
14	85012	7	M12
15	81226	1	M12 x 25
16	81221	7	M12 x 20
17	89519	2	
18	85335	1	
19	84704	12	M8 x 16
20	25542	1	

92193

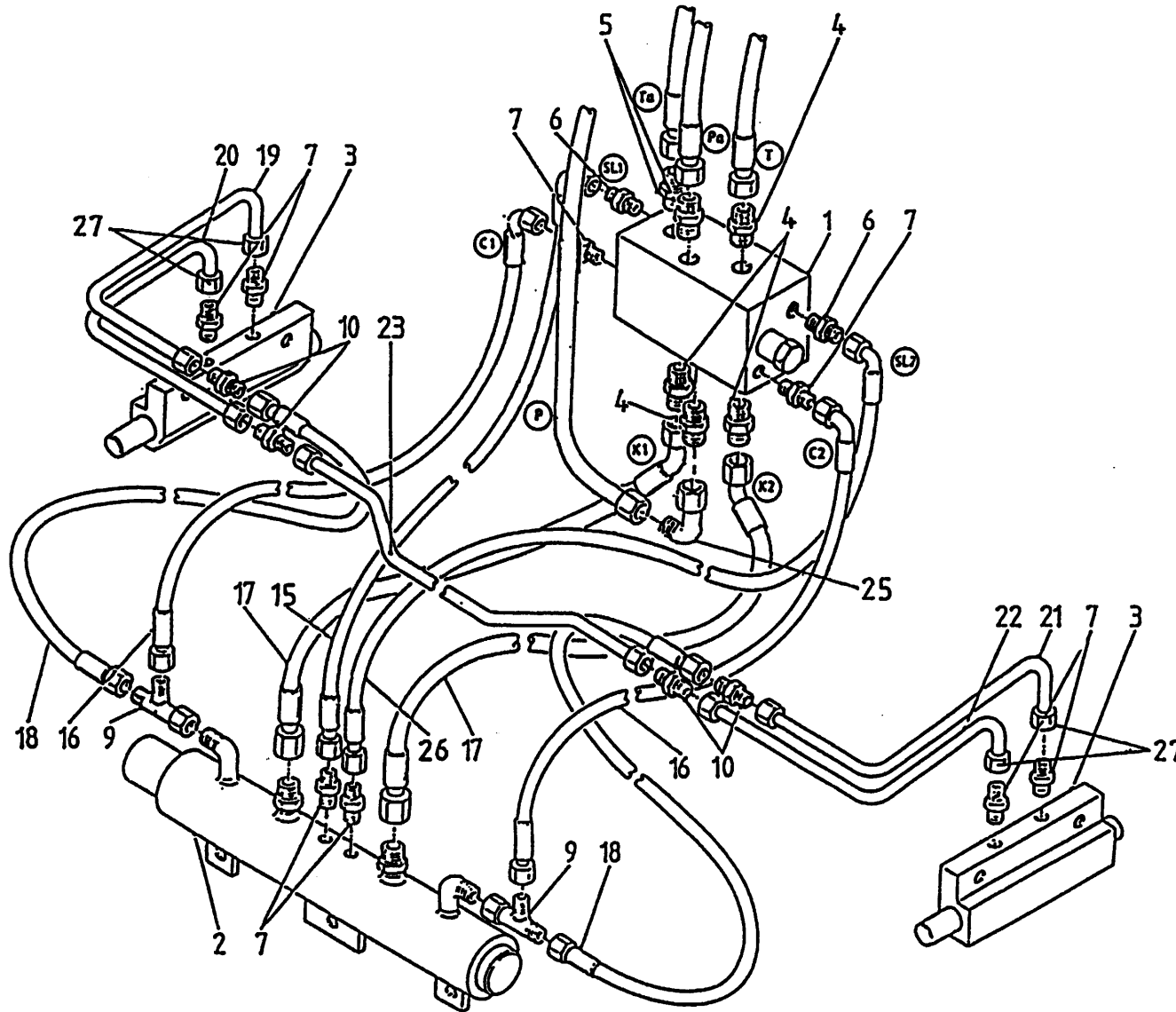
Afbeelding 7 : Messysteem
 Abbildung 7 : Schneidvorrichtung
 Picture 7 : Cutting system



bestelnummer			
ordernummer			
Num. à commander			
Bestellnummer			
1	26846	1	4.8 mm
2	12404	1	
3	12403	1	
4	26108	1	
5	25653	1	
6	25652	1	
7	26379	1	
8	23853	2	
9	25657	2	
10	25636	2	
11	26307	2	
12	31862	7	
13	51119	1	
14	51115	2	
15	83916	4	M10 x 16
16	83921	6	M10 x 25
17	84925	8	M10 x 23
18	83920	3	M10 x 20
19	24153	2	
20	84942	15	M10 x 16
21	83937	2	M12 x 30
22	85246	4	Ø 5 x 20
23	86810	20	M10
24	26184	2	
25	25048	2	
26	12414	1	
27	12413	1	
28	26839	1	
29	83931	4	M16 x 30
30	26347	1	
31	26348	1	
32	84926	4	M10 x 19
33	83915	8	M10 x 30
34	83934	4	M10 x 22

92193

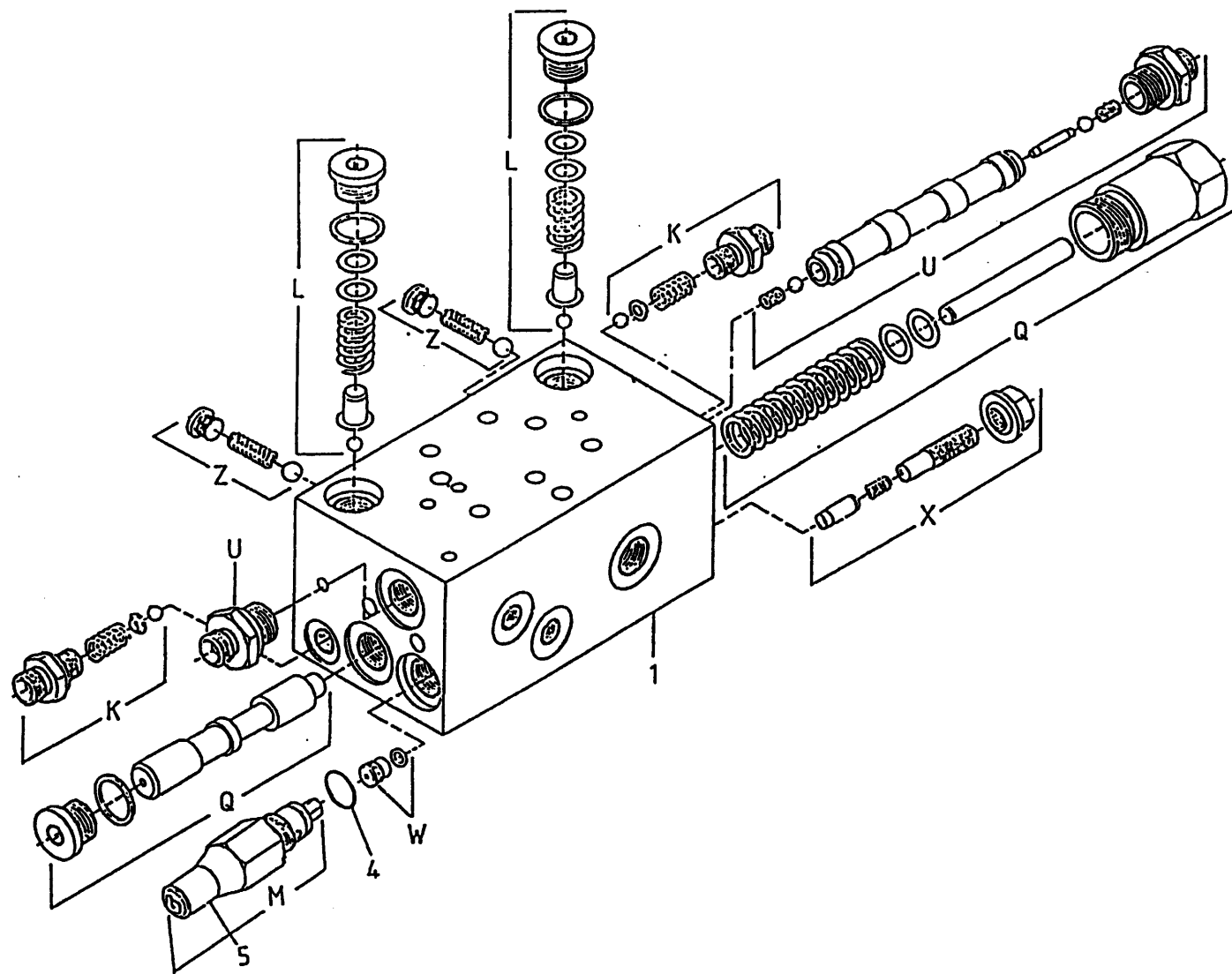
Afbeelding 8 : Stuurblok uitwendig
 Abbildung 8 : Steuerblock Außenseite
 Picture 8 : Controlblock and hoses



bestelnummer		ordernummer	
Num. à commander		Bestellnummer	
1	53198	1	
2	51119	1	
3	51115	2	
4	X50102	4	
5	X50113	2	
6	X50114	2	
7	X50104	8	
9	X50300	2	
10	X50135	4	
15	W50971	1	¼" 400 H20°
16	W50895	2	¼" 300 RH
17	W50970	2	½"290 R45°
18	W52604	2	¼"340 RR
19	50944	1	
20	50943	1	
21	50946	1	
22	50945	1	
23	52605	1	L-890
25	X50143	1	
26	W50972	1	¼" 400 H20°
27	50430	4	

92193

Afbeelding 9 : Stuurblok inwendig
 Abbildung 9 : Steuerblock Innenseite
 Picture 9 : Control block



bestelnummer

ordernummer

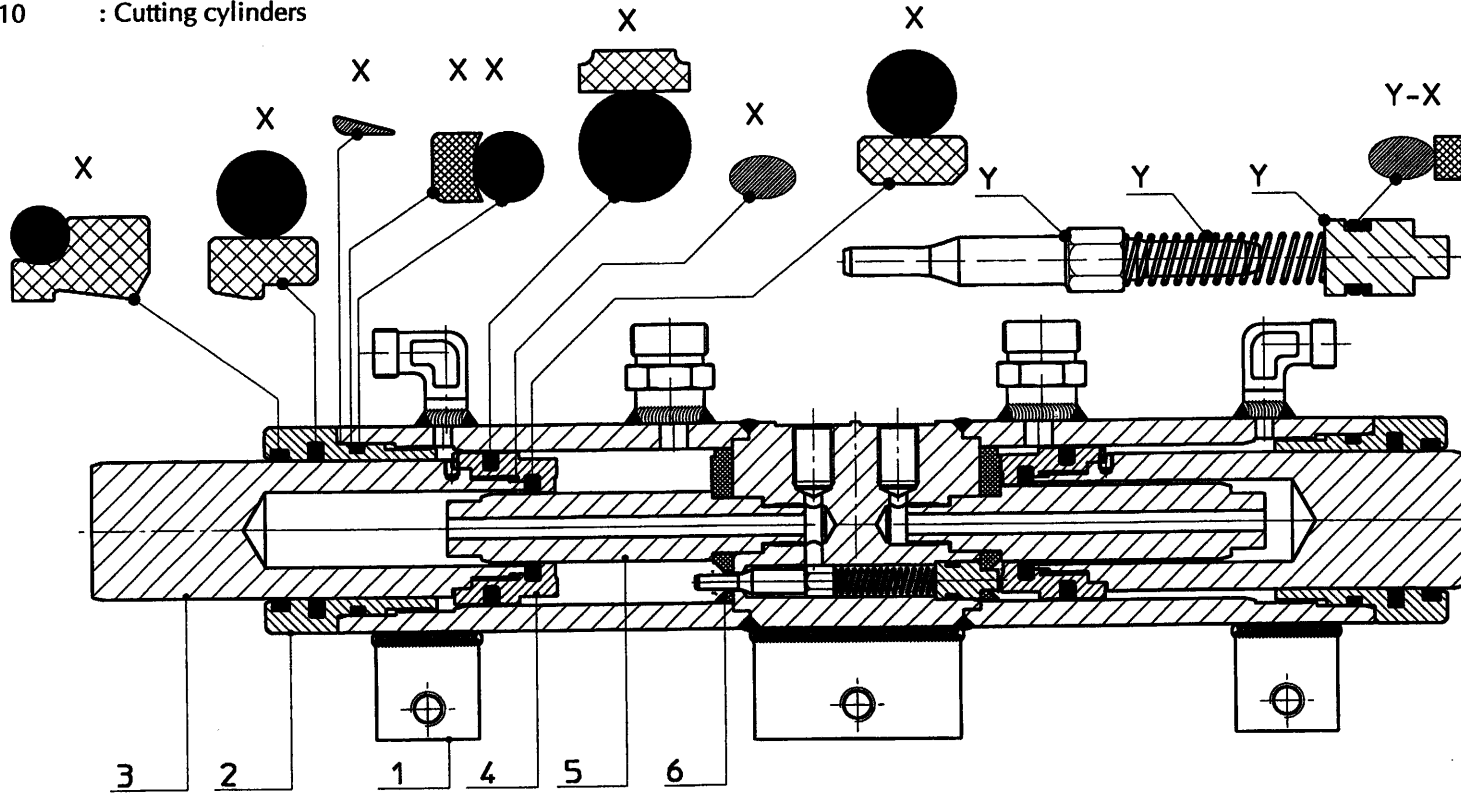
Num. à commander

Bestellnummer

1	53198	1	
4	78053	1	12 x 1,5
5	60260	1	
K	050489	1	10 bar
L	05264	2	200 bar
M	05265	2	230 bar
U	53150	1	
W	53256	1	
X	53257	1	
Z	05267	1	

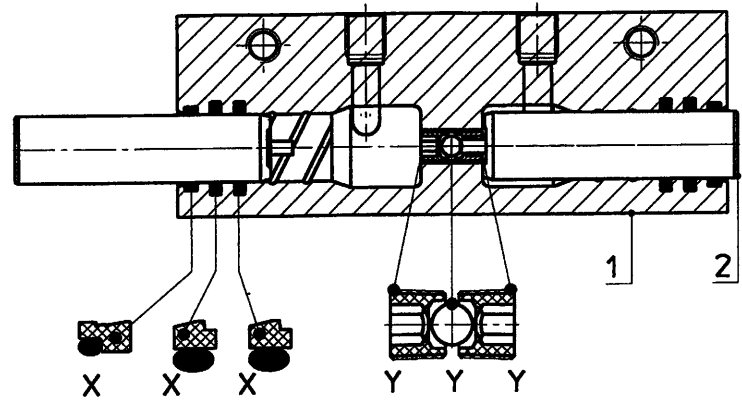
92193

Afbeelding 10 : Achter- en zijmescilinder
 Abbildung 10 : Heck- und Seitenzylinder
 Picture 10 : Cutting cylinders



bestelnummer
 ordernummer
 Num. à commander
 Bestellnummer

51119			
1	12106	1	
2	31421	2	
3	31455	2	1 ring
4	31453	2	
5	31454	2	18 mm
6	31428	2	
X	05306	1	
Y	05297	1	

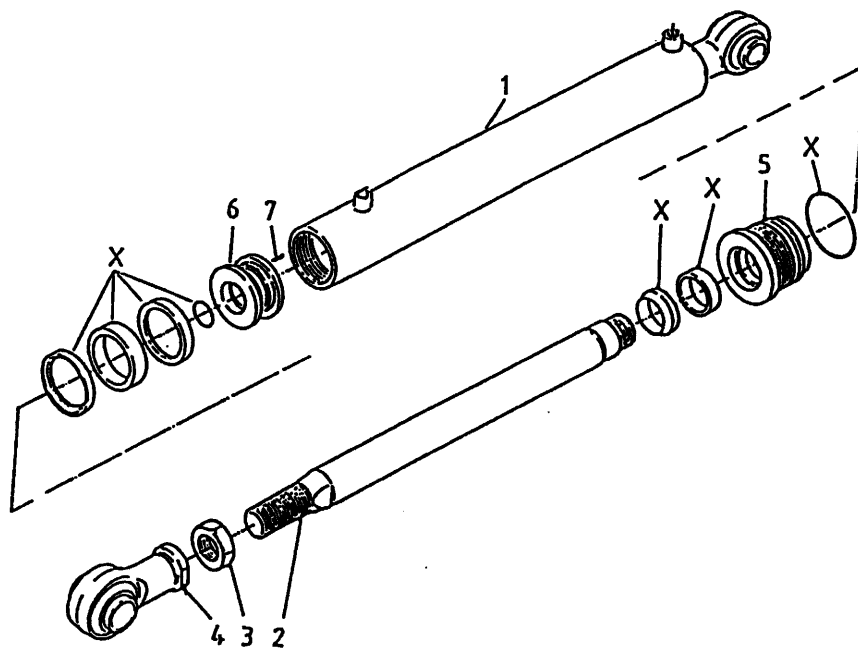


51115

1	31772	1	
2	31436	2	
X	05294	1	
Y	05298	1	

92193

Afbeelding 11 : Intrekcilinder
 Abbildung 11 : Ladezylinder
 Picture 11 : Loading cylinder



bestelnummer

ordernummer

Num. à commander

Bestellnummer

51201

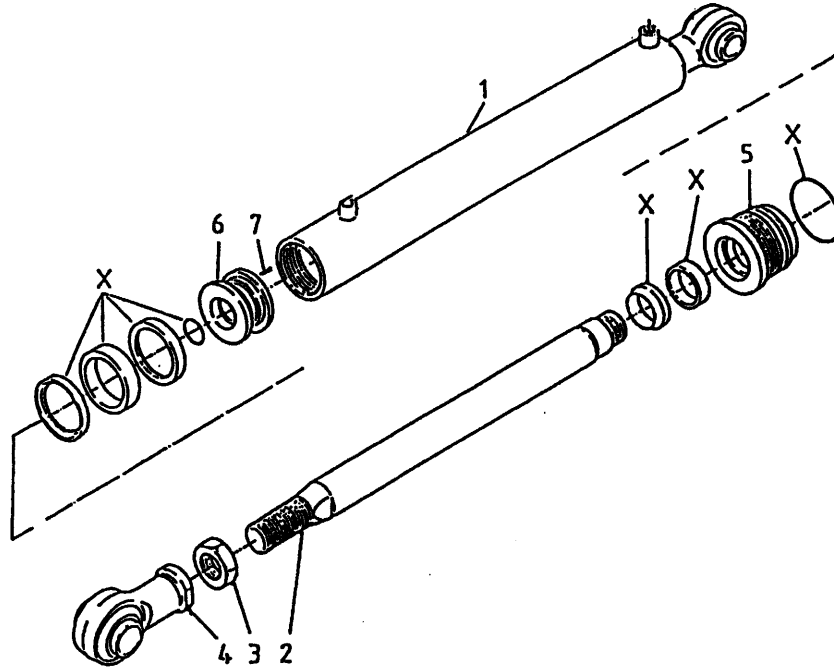
1	12939	1	
2	32243	1	
3	86140	1	M40 x 2
4	11671	1	
5	31741	1	
6	31446	1	
7	84119	1	M6 x 10
X	05350	1	

92193

Afbeelding 12 : Aanzetcilinder

Abbildung 12 : Vorschubzylindern Schneiden

Picture 12 : Main cylinder cutting



bestelnummer

ordernummer

Num. à commander

Bestellnummer

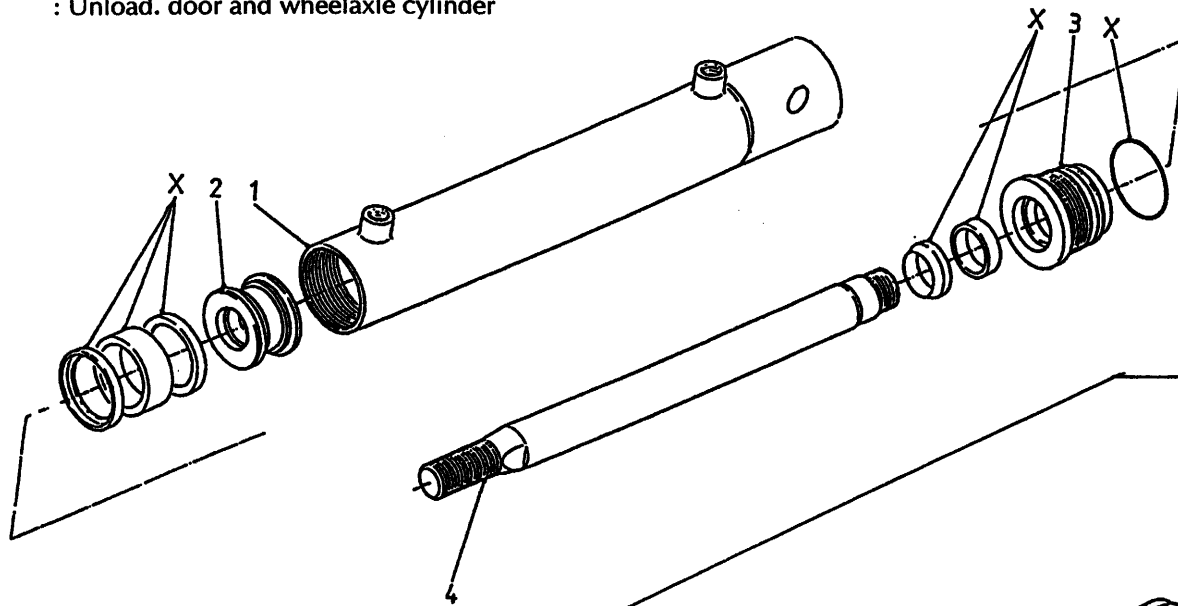
51204

1	12937	1	
2	32249	1	
3	86140	1	M40 x 2
4	11671	1	
5	32247	1	
6	32077	1	
7	84119	1	M6 x 10
X	05464	1	

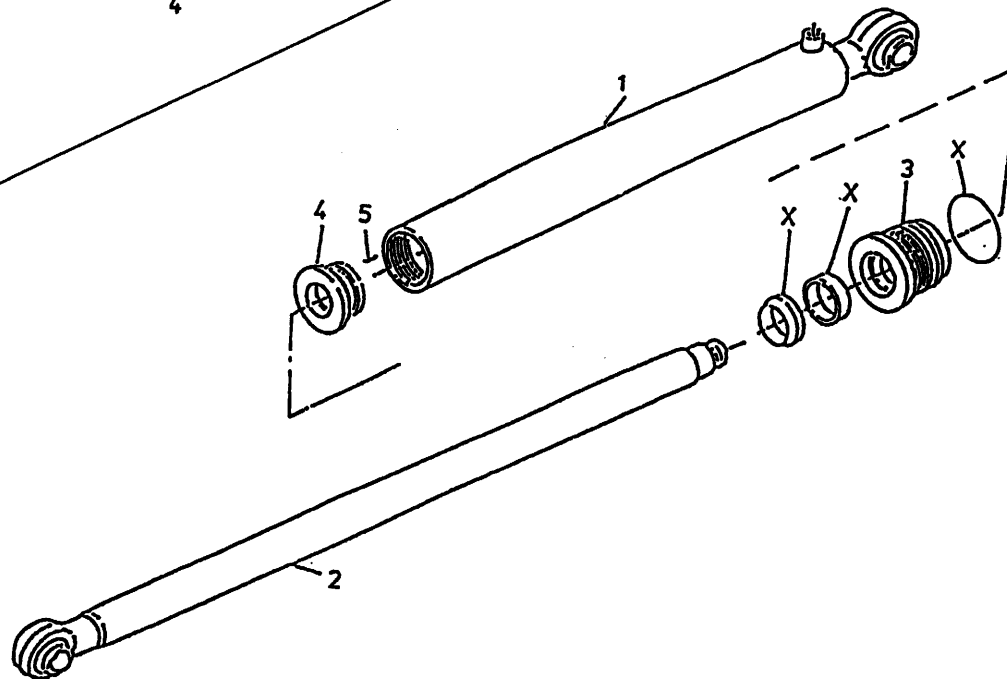
92193

Afbeelding 13 : Doseerklap- en wielarmcilinder
 Abbildung 13 : Dosierklappe und Radarmzylinder
 Picture 13 : Unload. door and wheelaxle cylinder

51202



51205



bestelnummer
 ordernummer
 Num. à commander
 Bestellnummer

51202

1	13124	1
2	30860	1
3	31460	1
4	32333	1
X	05309	1

51205

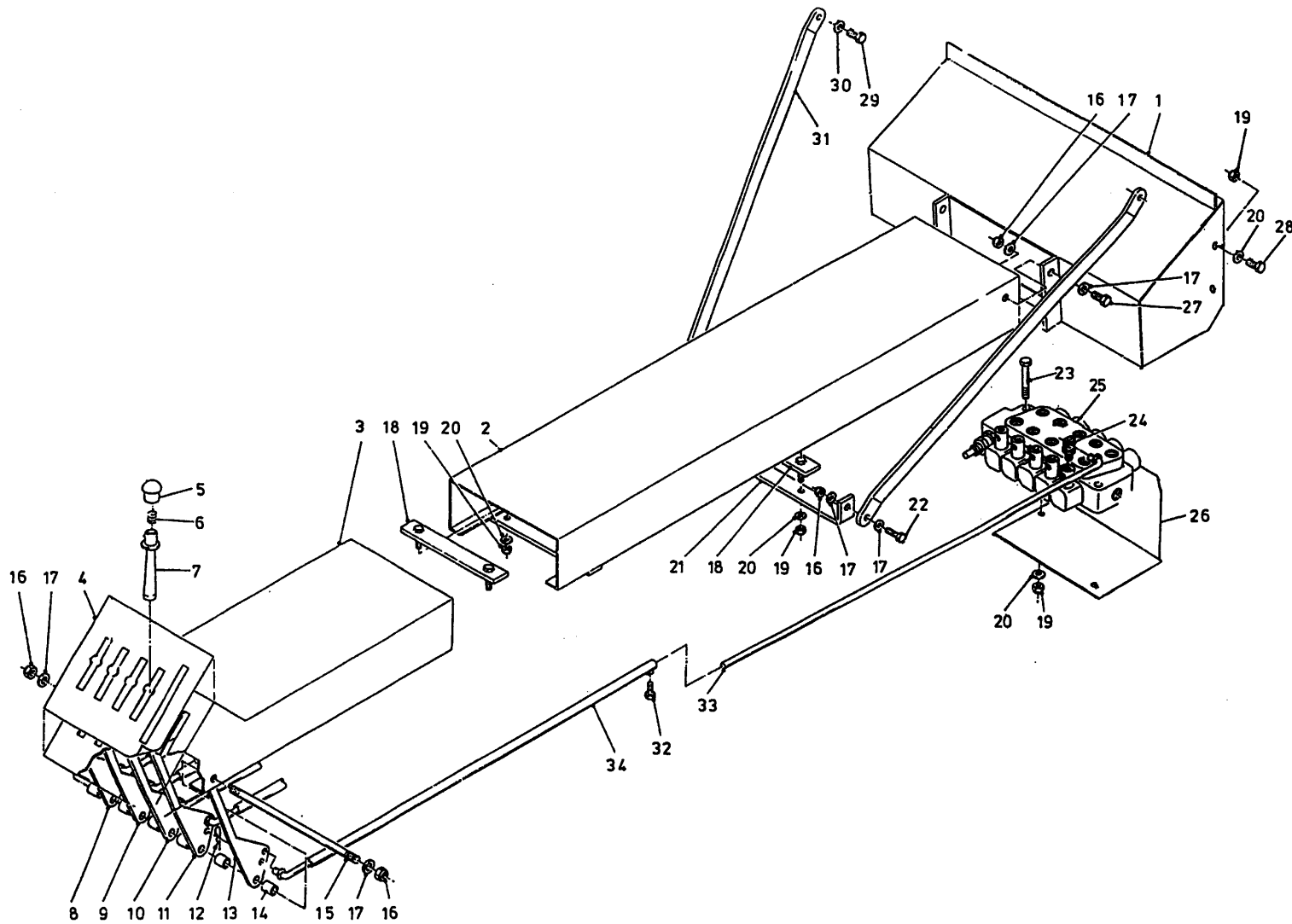
1	12633	1	M6 x 10
2	12977	1	
3	31930	1	
4	31643	1	
5	84119	1	
X	05423	1	

92193

Afbeelding 14 : Handventielen

Abbildung 14 : Handventilen

Picture 14 : Manual control

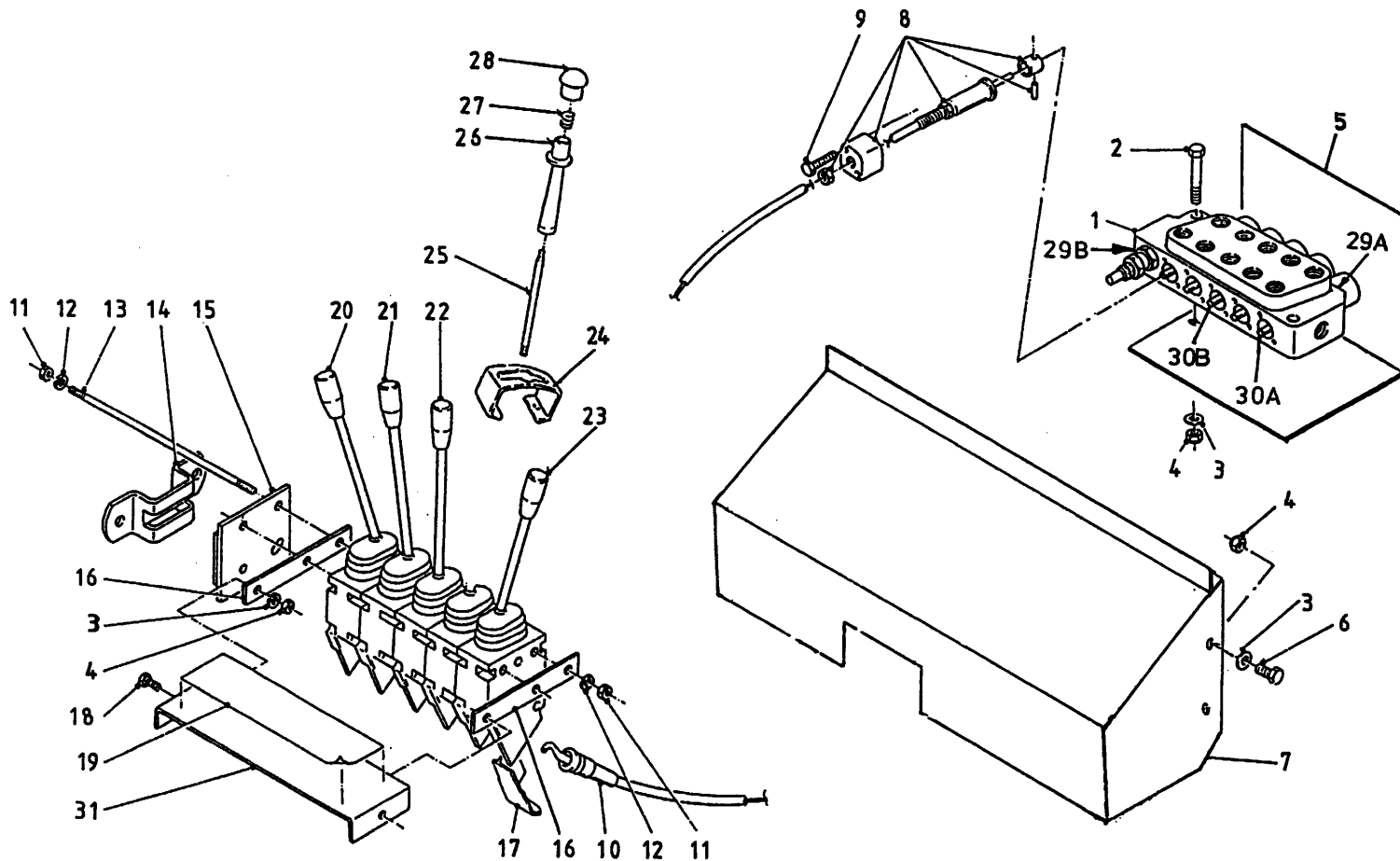


bestelnummer
 ordernummer
 Num. à commander
 Bestellnummer

1	12980	1	
2	13128	1	
3	12001	1	
4	91361	1	
5	60396	1	
6	65090	1	
7	60395	1	
8	29317	1	39° R
9	25571	1	26° R
10	25570	1	13° R
11	13042	1	
12	65079	10	
13	25568	1	13° L
14	25562	6	
15	31755	1	
16	86210	6	M10
17	85110	10	M10
18	12023	2	
19	86208	10	M8
20	85108	10	M8
21	25553	1	
22	81036	2	M10 x 35
23	80845	2	M8 x 45
24	12025	5	
25	53485	1	
26	28934	1	
27	81026	2	M10 x 25
28	80826	4	M8 x 25
29	81226	1	M12 x 25
30	85112	2	M12
31	29319	2	
32	80616	5	M6 x 16
33	13129	5	
34	12004	5	

92193

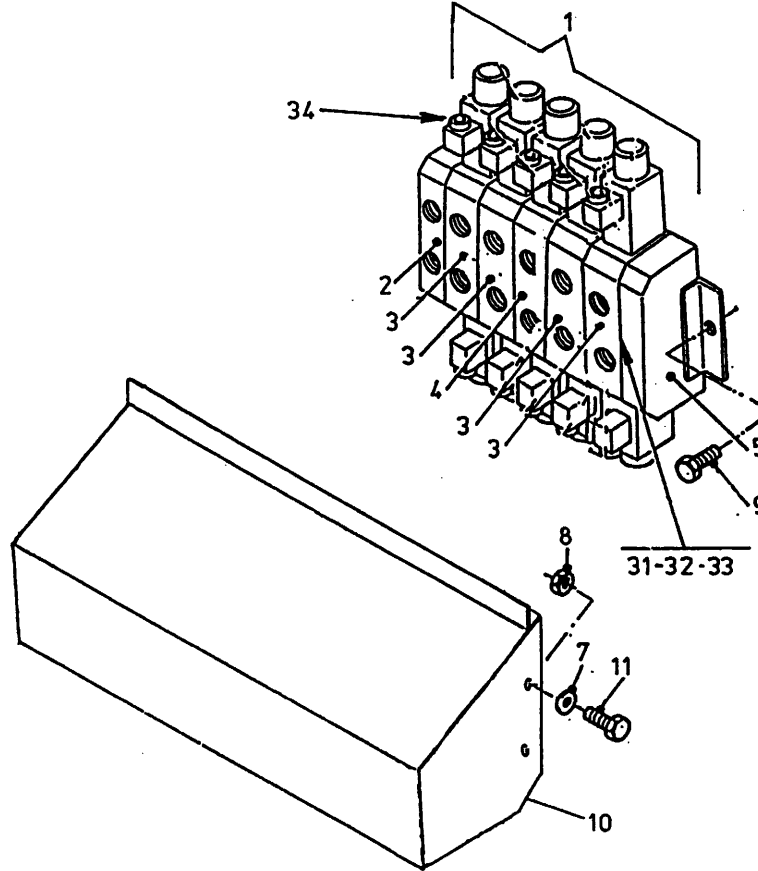
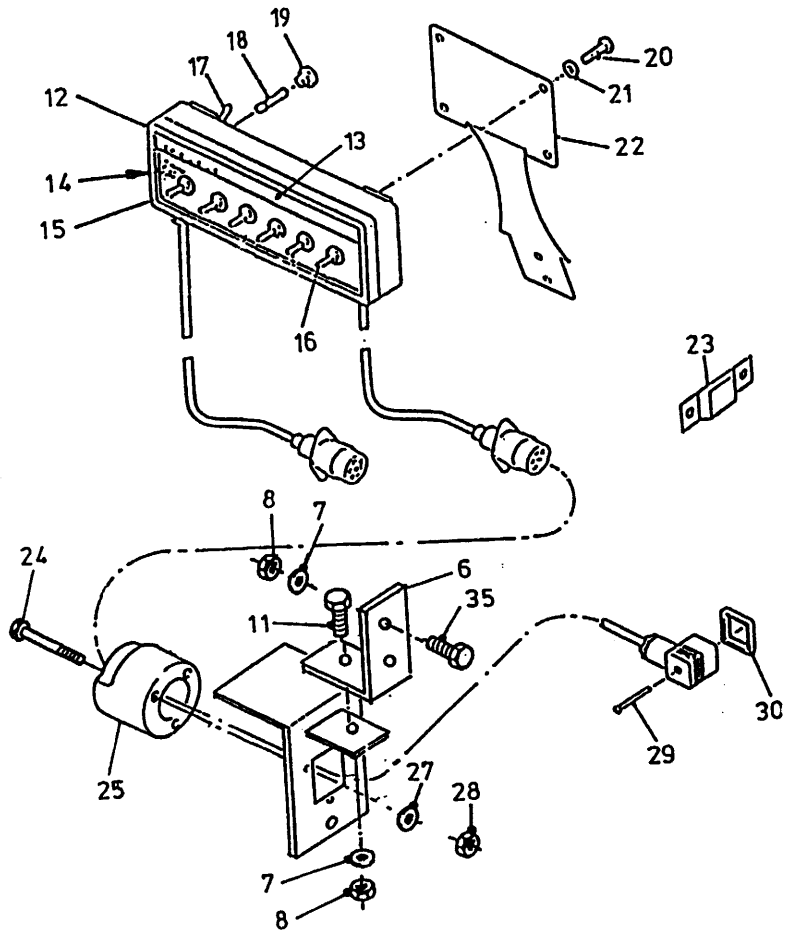
Afbeelding 15 : Mechanische bediening
 Abbildung 15 : Mechanische Fernbedienung
 Picture 15 : Mechanical remote control



bestelnummer		ordernummer	
Num. à commander		Bestellnummer	
1	53485	1	
2	80845	2	M8 x 45
3	85108	10	M8
4	86208	10	M8
5	28934	1	
6	80831	4	M8 x 30
7	29378	1	
8	53231	5	
9	84480	10	M6 x 45
10	79059	5	
11	86206	6	M6
12	85106	6	M6
13	84045	3	M6 x 240
14	20199	1	
15	11139	1	
16	22244	2	
17	60210	5	
18	80816	2	M8 x 16
19	91361	1	
20	53487	1	45° R
21	53128	1	30° R
22	53127	1	15° R
23	53129	1	15° L
24	28997	1	
25	53478	1	
26	60395	1	
27	65090	1	
28	60396	1	
29A	78126	10	15.08x2.62/70
29B	78128	1	17.86x2.62/70
30A	53430	4	
30B	53434	1	
31	22245	1	

92193

Afbeelding 16 : Elektrische bediening
 Abbildung 16 : Elektrische Fernbedienung
 Picture 16 : Electrical remote control

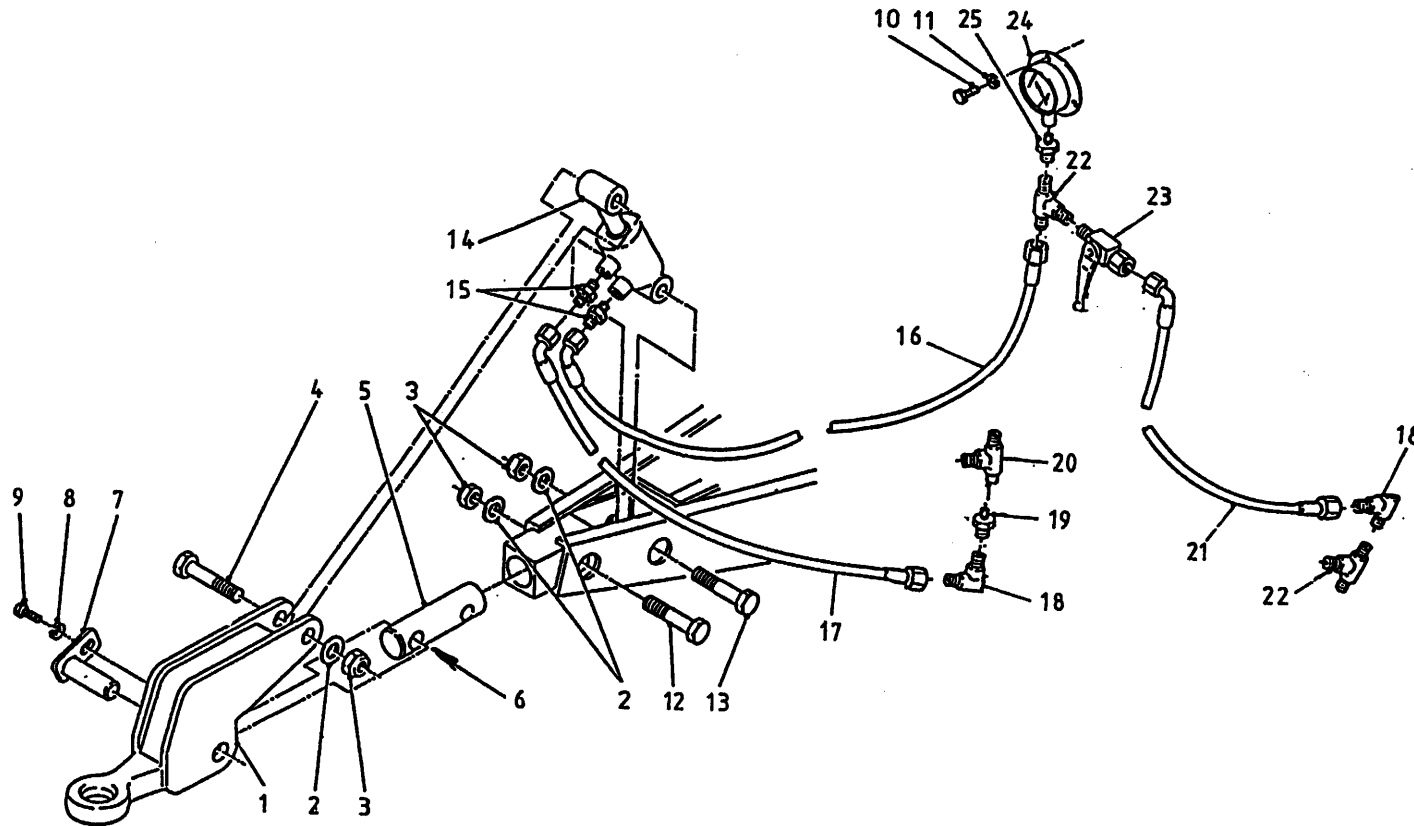


bestelnummer
 ordernummer
 Num. à commander
 Bestellnummer

1	53486	1	HDS11
2	53404	1	
3	53405	4	
4	53410	1	
5	53407	1	
6	29468	1	
7	85108	7	M8
8	86208	7	M8
9	84420	2	M8 x 16
10	29379	1	
11	80831	5	M8 x 30
12	98197	1	
13	91015	1	
14	98051	1	
15	98113	6	
16	98056	6	
17	98054	1	
18	98053	1	
19	98052	1	
20	80610	4	M6 x 10
21	85106	4	M6
22	40420	1	
23	24644	1	
24	84476	3	M5 x 35
25	98147	1	
26	12358	1	
27	85105	3	M5
28	86205	3	M5
29	84711	12	M3 x 35
30	60180	12	
31	78143	18	17,12x2,62/90
32	78144	6	10,77x2,62/20
33	78132	6	12,42x2,62/90
34	78134	12	15,6x1,78/70
35	84125	2	M8 x 25

92193

Afbeelding 17 : Hydraulische weeginstallatie
 Abbildung 17 : Hydraulischer Wiegeeinrichtung
 Picture 17 : Hydraulic weighing system



bestelnummer
 ordernummer
 Num. à commander
 Bestellnummer

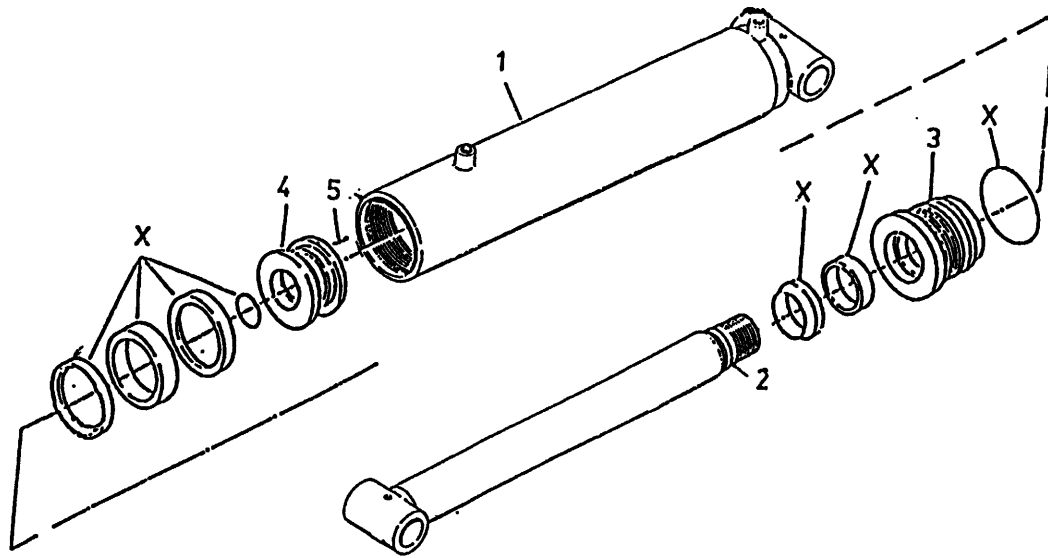
1	12623	1	
2	85020	3	M20
3	86220	3	M20
4	82010	1	M20 x 100 12.9
5	32086	1	
6	51747	2	
7	12418	1	
8	85010	1	M10
9	81021	1	M10 x 20
10	80620	3	M6 x 20
11	85106	3	M6
12	82013	1	M20 x 130 12.9
13	82012	1	M20 x 120 12.9
14	51195	1	
15	X50104	2	
16	W50700	1	¼" 1800 RH
17	W50627	1	¼" 2250 RH
18	X50147	2	
19	50157	1	
20	X50309	1	
21	W50636	1	¼" 750 RH
22	X50300	1	
23	51027	1	
24	53476	1	
25	50415	1	

92193

Afbeelding 18 : Weegcilinder

Abbildung 18 : Wiegezyylinder

Picture 18 : Weighing cylinder



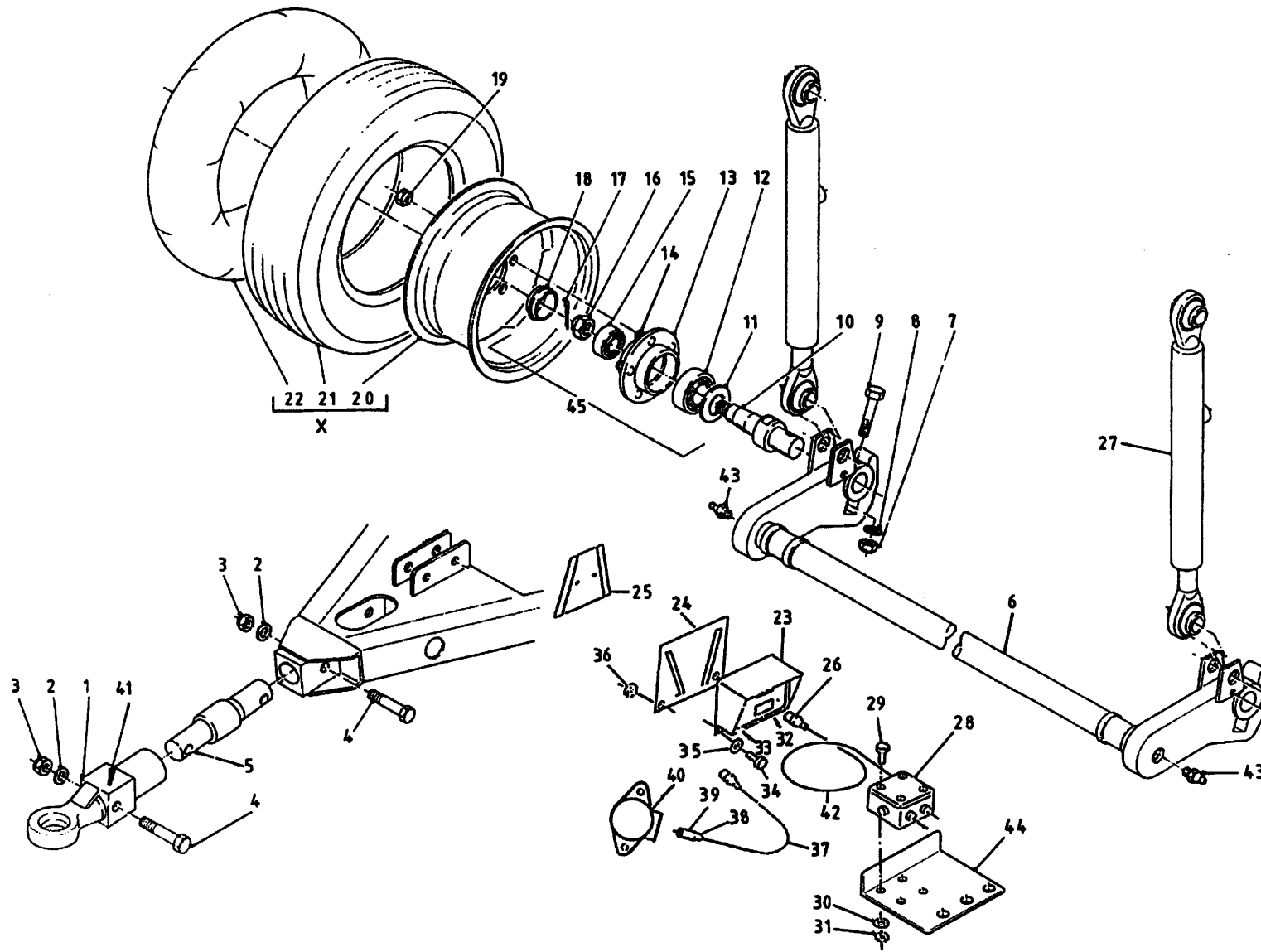
bestelnummer
ordernummer
Num. à commander
Bestellnummer

51195

1	12415	1	M6 x 10
2	12796	1	
3	31949	1	
4	32182	1	
5	84119	1	
X	05455	1	

92193

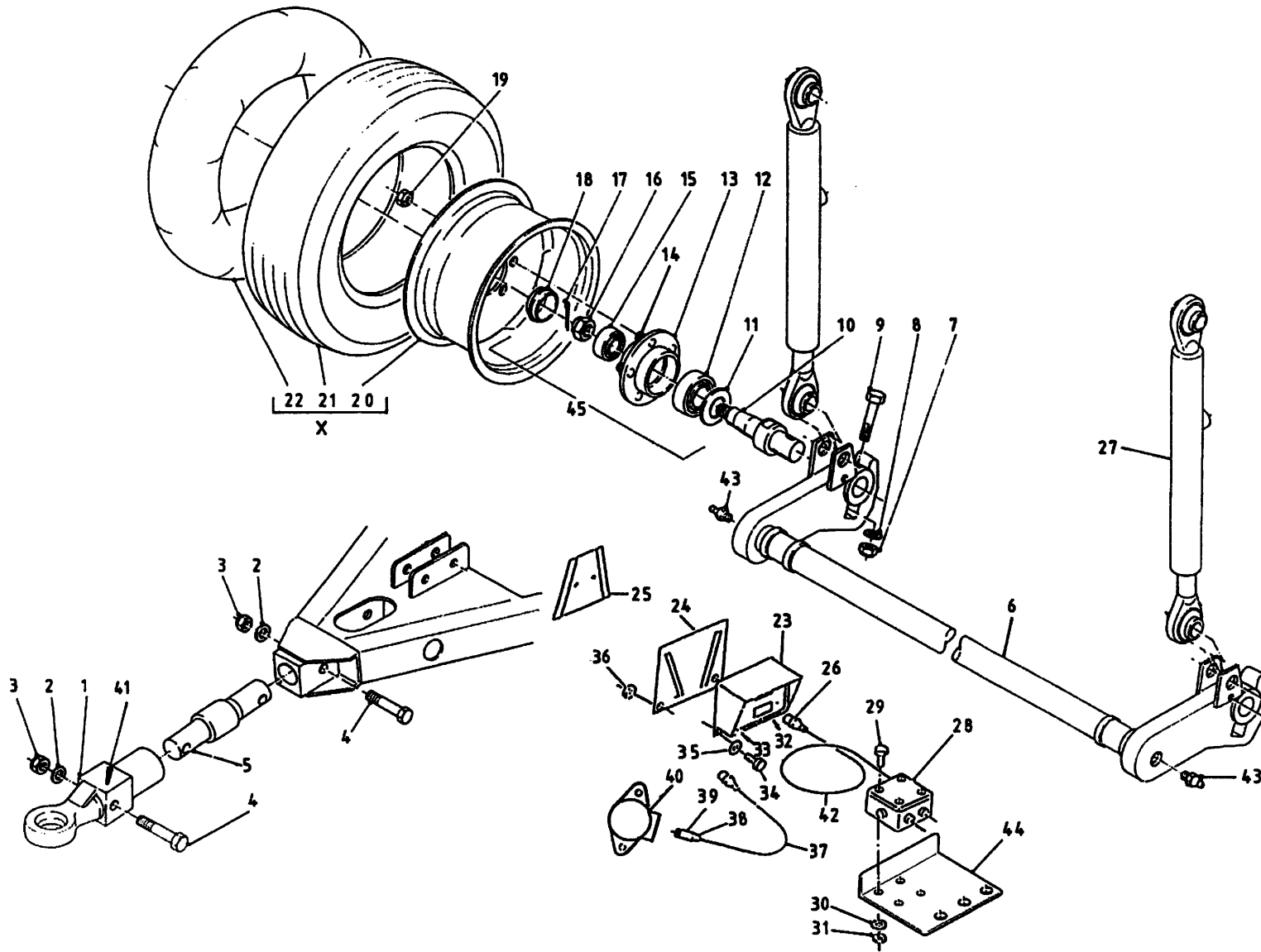
Afbeelding 19 : Elektronische weeginstallatie
 Abbildung 19 : Elektronischer Wiegeeinrichtung
 Picture 19 : Electronic weighing system



bestelnummer		ordernummer	
Num. à commander		Bestellnummer	
1	12474	1	
2	85120	2	M20
3	86220	2	M20
4	82013	2	M20 x 130
5	90743	1	
6	13134	1	
7	86216	2	M16
8	85116	2	M16
9	81616	2	M16 x 160
10	90782	2	
11	90779	2	
12	70147	2	30209
13	90778	2	
14	84943	10	M16 x 1.5 H=45
15	70138	2	3020
16	90780	2	M27 x 1.5
17	88240	2	Ø 4 x 40
18	90781	2	
19	86934	10	M16 x 1.5
20	90848	2	5.00 x 10
21	90849	2	24 x 7.7
22	90850	2	
23A	90481	1	F150
23B	90744	1	F150 View
23C	90573	1	F320
23D	94007	1	EZ 2000
23E	90977	1	EZ 2000 View
23F	94075	1	EZ 3200
23G	94076	1	EZ 3200 View
24	40503	1	
25	40504	1	
26	98218	1	
27	51219	2	
28	90482	1	

92193

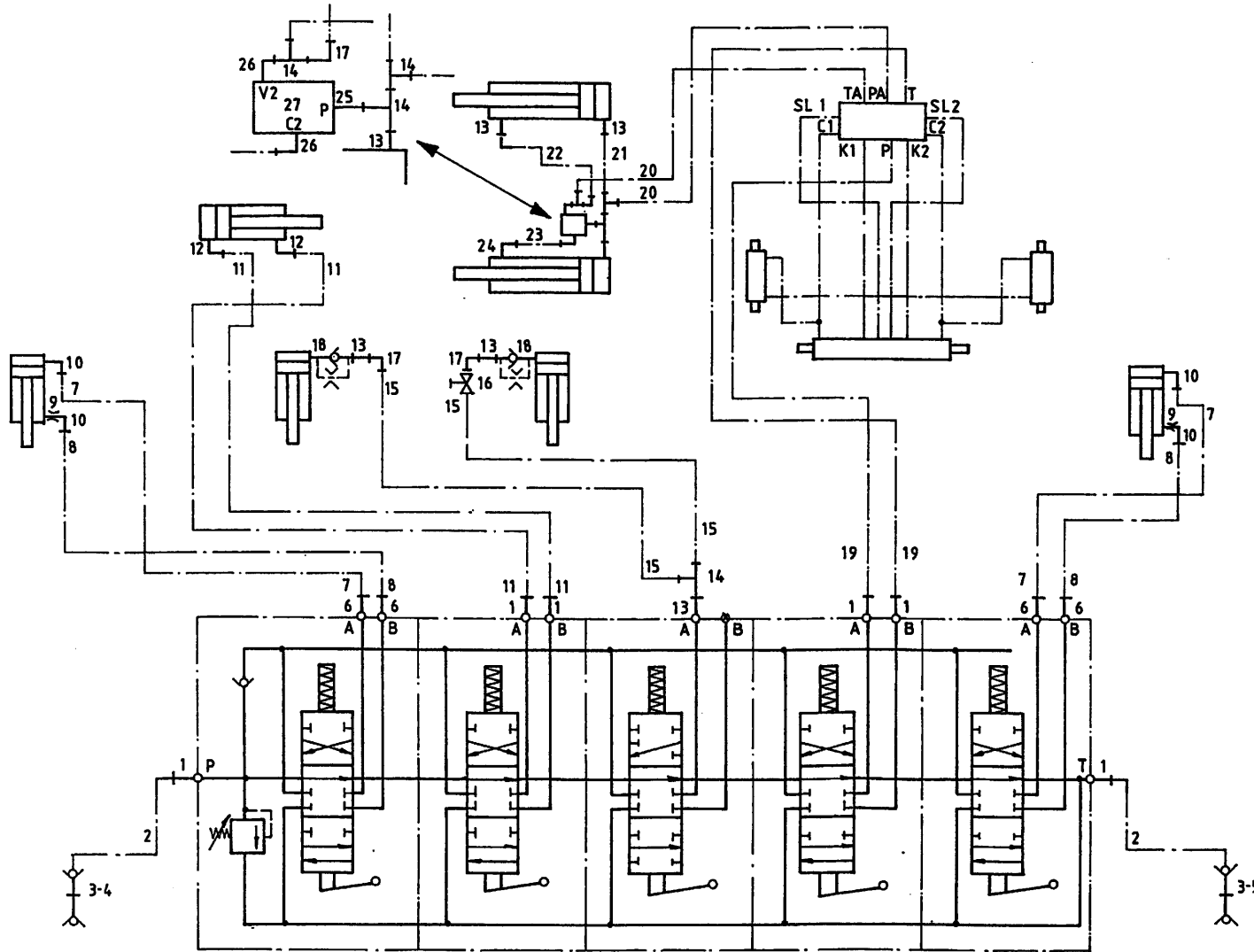
Afbeelding 19 : Elektronische weeginstallatie
 Abbildung 19 : Elektronischer Wiegeeinrichtung
 Picture 19 : Electronic weighing system



bestelnummer			
ordernummer			
Num. à commander			
Bestellnummer			
29	84485	4	M5 x 20
30	85105	4	M5
31	86505	4	M5
32	05390	1	Female
33	05389	1	Female
34	80816	2	M8 x 16
35	85108	2	M8
36	86208	2	M8
37	90483	1	
39	98239	1	
39	98238	1	
40	98237	1	
41	91216	1	
42	90719	1	
43	89521	2	³ / ₈ "
44	40668	1	
45	90777	2	complete
X	90837	2	

92193

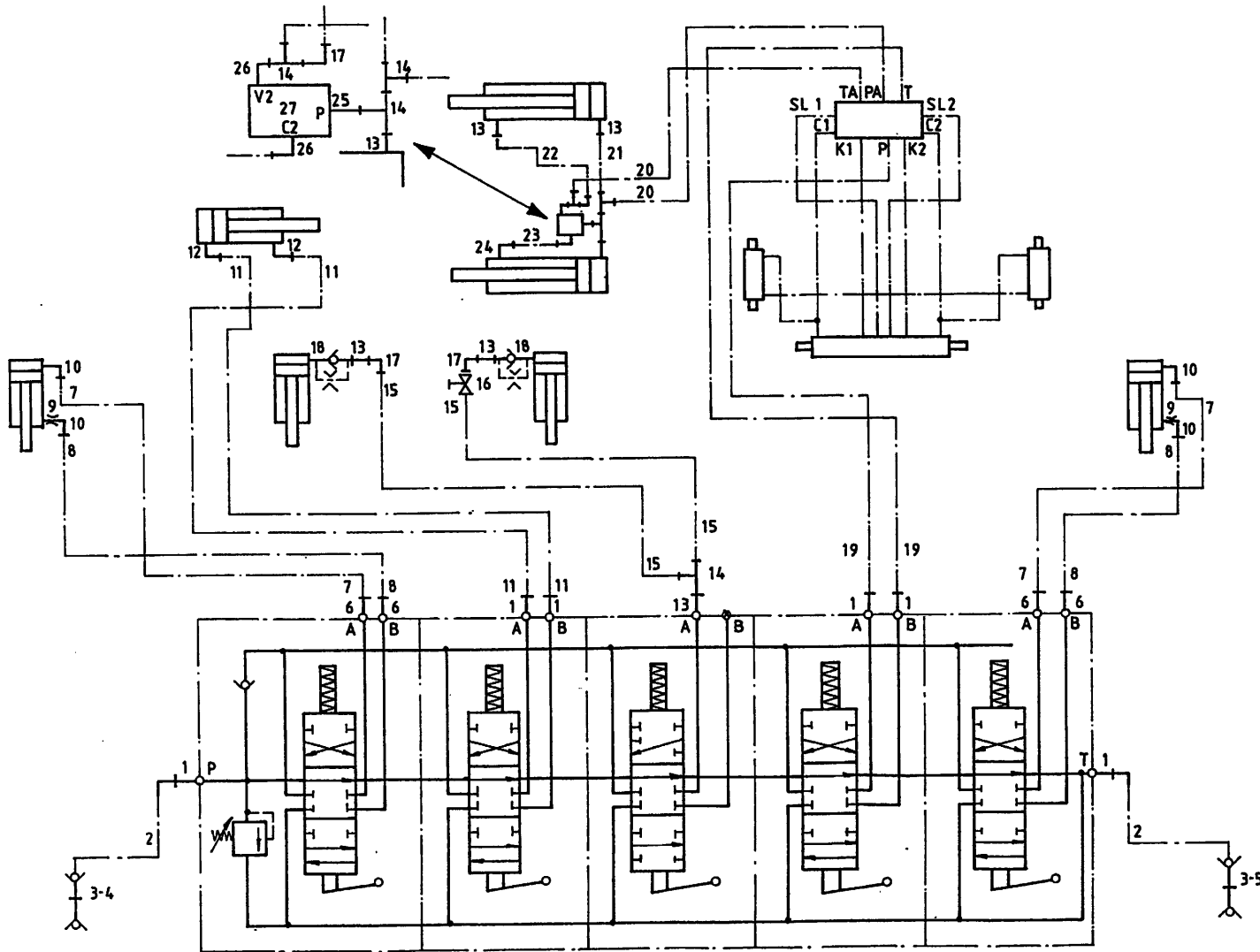
Afbeelding 20 : Slangenschema handbediening
 Abbildung 20 : Schaltplan Handbediening
 Picturre 20 : Hose-scheme manual control



bestelnummer		ordernummer	
Num. à commander		Bestellnummer	
1	X50102	6	
2	W50643	2	½" 2500 RH
3	53301	2	
4	53303	1	Rood
5	53326	1	Blauw
6	X50114	4	
7	W50744	2	¼" 2250 RR
8	W50854	2	¼" 2700 RR
9	30726	2	Ø 0,8
10	X50107	4	
11	W50687	2	⅜" 3000 RR
12	X50123	2	
13	50113	3	
14	X50309	4	
15	W50947	2	⅜" 3600 RR
16	51045	1	
17	50122	3	
18	53202	2	
19	W50765	2	½" 4300 RR
20	W52676	2	½" 2250 RR
21	W52662	1	⅜" 400 RR
22	W52664	1	⅜" 900 RH
23	52665	1	L=413
24	50103	1	
25	50288	1	
26	50105	1	
27	53459	1	

92193

Afbeelding 21 : Slangenschema mechanische bediening
 Abbildung 21 : Schaltplan mechanische. Fernbedienung
 Picturre 21 : Hose-scheme mechanical remote control

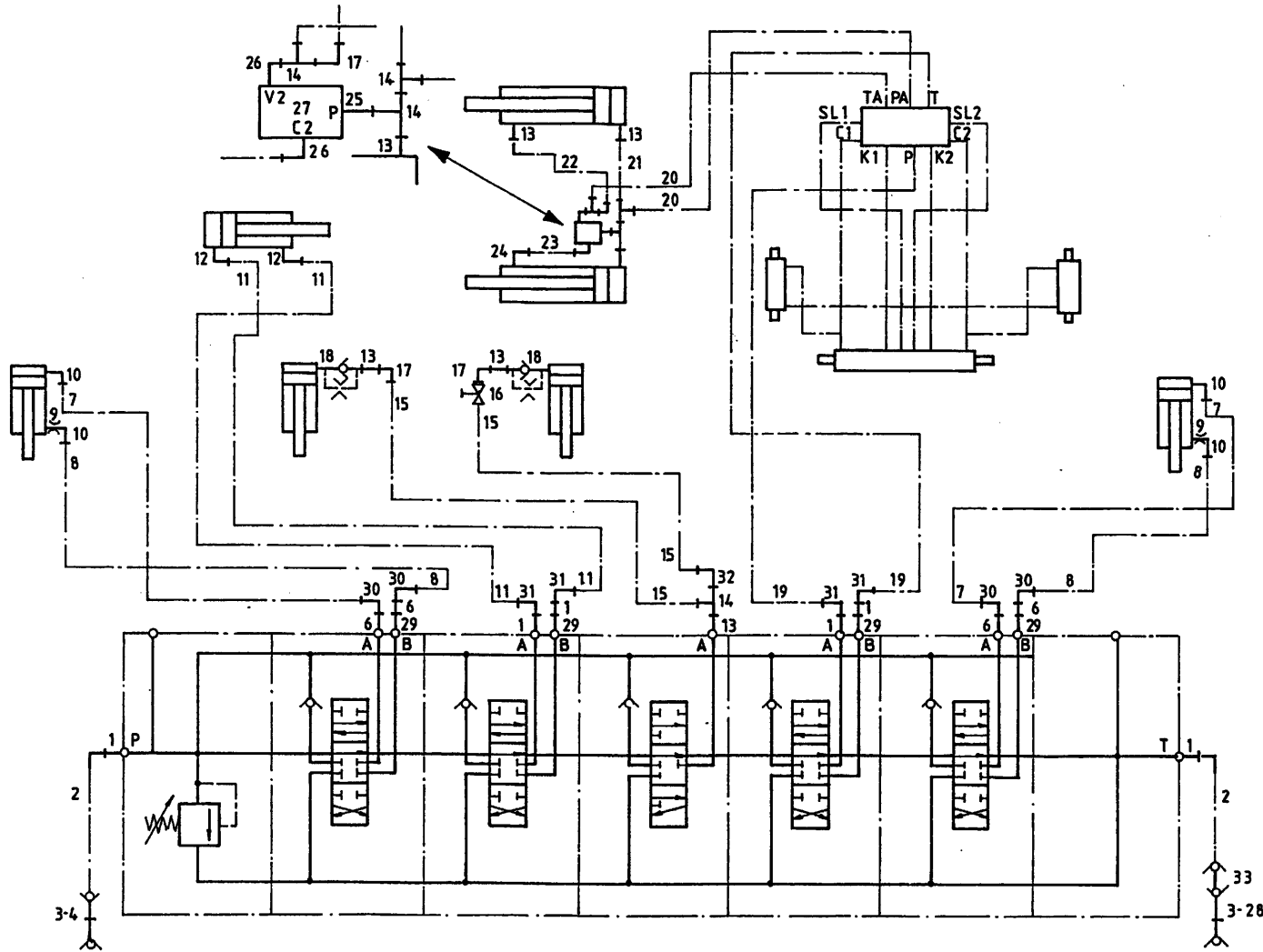


bestelnummer
 ordernummer
 Num. à commander
 Bestellnummer

1	X50102	6
2	W50643	2 ½" 2500 RH
3	53301	2
4	53303	1 Rood
5	53326	1 Blauw
6	X50114	4
7	W50744	2 ¼" 2250 RR
8	W50854	2 ¼" 2700 RR
9	30726	2 Ø 0,8
10	X50107	4
11	W50687	2 ¾" 3000 RR
12	X50123	2
13	50113	3
14	X50309	4
15	W50947	2 ¾" 3000 RR
16	51045	1
17	50122	3
18	53202	2
19	W50765	2 ½" 4300 RR
20	W52676	2 ½" 2250 RR
21	W52662	1 ¾" 400 RR
22	W52664	1 ¾" 900 RH
23	52665	1 L-413
24	50103	1
25	50288	1
26	50105	1
27	53459	1

92193

Afbeelding 22 : Slangenschema elektrische bediening
 Abbildung 22 : Schaltplan elektrische Fernbedienung
 Picture 22 : Hose-scheme electrical remote control



bestelnummer
 ordernummer
 Num. à commander
 Bestellnummer

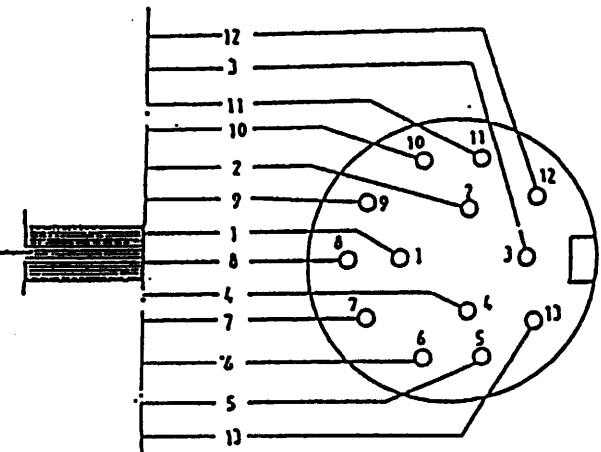
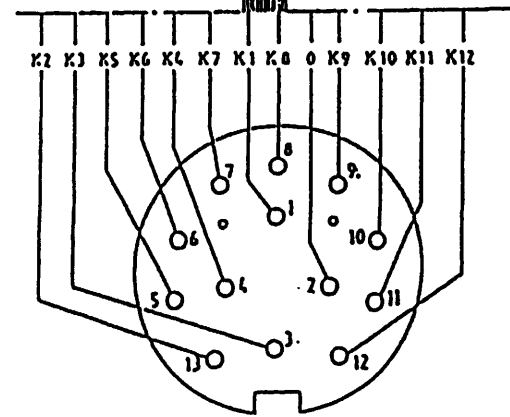
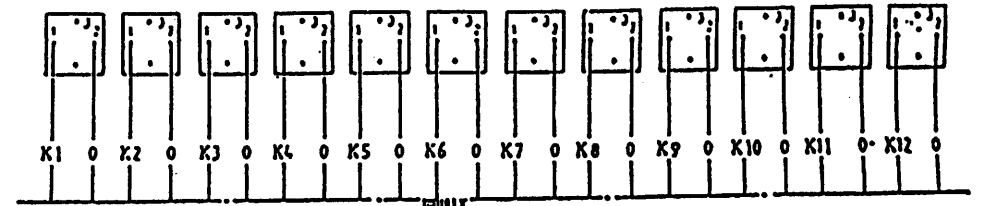
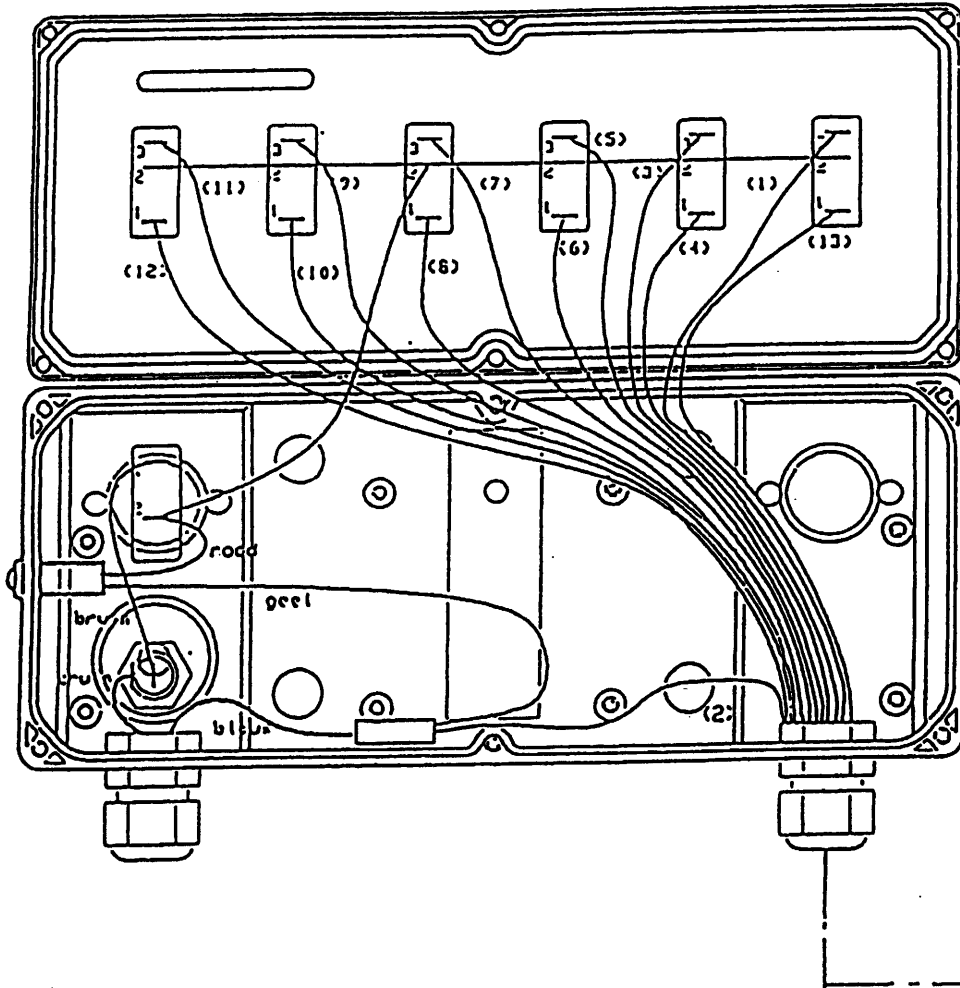
1	X50102	6
2	W50643	2 ½" 2500 RH
3	53301	2
4	53303	1 Rood
5	53326	1 Blauw
6	X50114	4
7	W50744	2 ¼" 2250 RR
8	W50854	2 ¼" 2700 RR
9	30726	2 Ø 0,8
10	X50107	4
11	W50687	2 ⅜" 3000 RR
12	X50123	2
13	50113	3
14	X50309	4
15	W50947	2 ⅜" 3000 RR
16	51045	1
17	50122	3
18	53202	2
19	W50765	2 ½" 4300 RR
20	W52676	2 ½" 2250 RR
21	W52662	1 ⅜" 400 RR
22	W52664	1 ⅜" 900 RH
23	52665	1 L-413
24	50103	1
25	50288	1
26	50105	1
27	53459	1
28	53309	1
29	50133	4
30	X50147	4
31	X50143	4
32	X50122	1
33	53467	1

92193

Afbeelding 23 : Aansluitschema bedieningskast

Abbildung 23 : Schaltplan Bedienungskasten

Picturre 23 : Scheme electrical controlbox

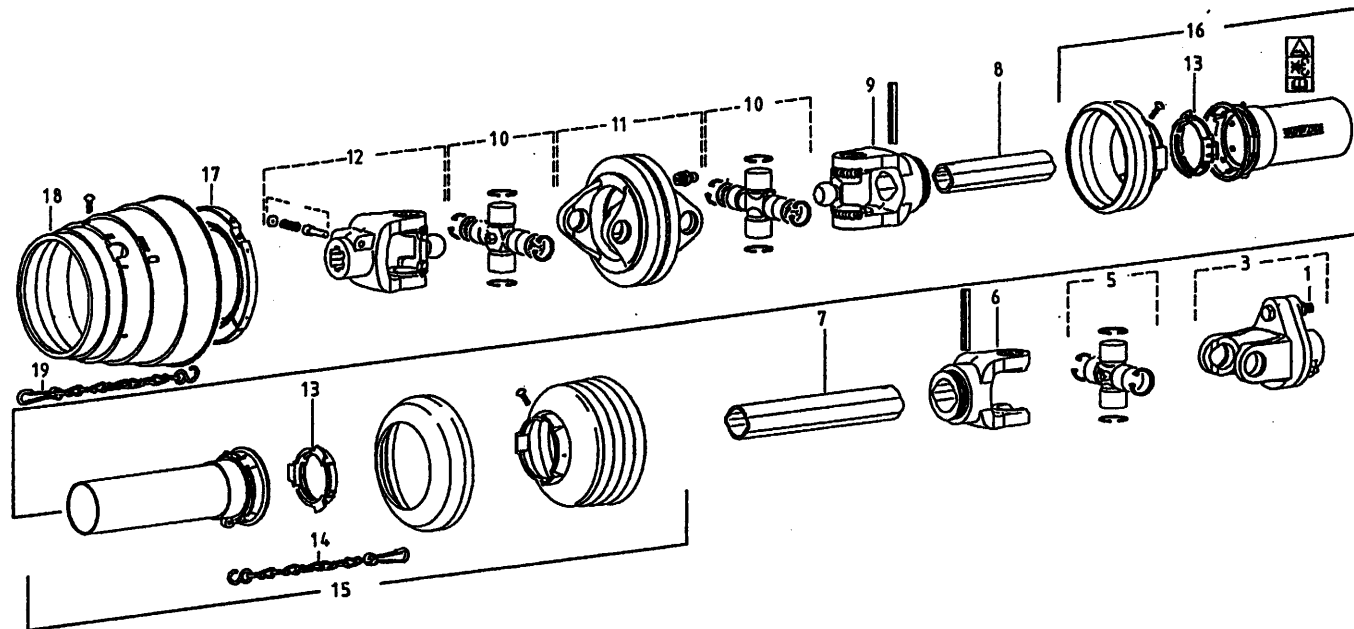


92193

Afbeelding 24 : Aftakas
 Abbildung 24 : Gelenkwelle
 Picturre 24 : PTO shaft

bestelnummer
 ordernummer
 Num. à commander
 Bestellnummer

90797 WWE 2380



1	80860	1	M8 x 60 8.8
3	94098	1	
5	90615	1	
6	94081	1	
7	90816	1	
8	90818	1	
9	90625	1	
10	94057	2	
11	94083	1	
12	94082	1	
13	90619	2	
14	90266	1	
15	94058	1	
16	94059	1	
17	94060	1	
18	94061	1	
19	94062	1	



Hinmanweg 19
7575 BE Oldenzaal - Holland
Postbus 134
7570 AC Oldenzaal - Holland
e-mail: info@triolet.nl
<http://www.triolet.nl>

Tel.: 0541 - 57 21 21 / (+) 31 - 541 - 57 21 21
Fax: 0541 - 57 21 25 / (+) 31 - 541 - 57 21 25

Voor onderdelen / Für Ersatzteile / For spare parts / Pour pièces de réchange

Tel.: 0541 - 57 21 36 / (+) 31 - 541 - 57 21 36
Fax: 0541 - 57 21 40 / (+) 31 - 541 - 57 21 40