

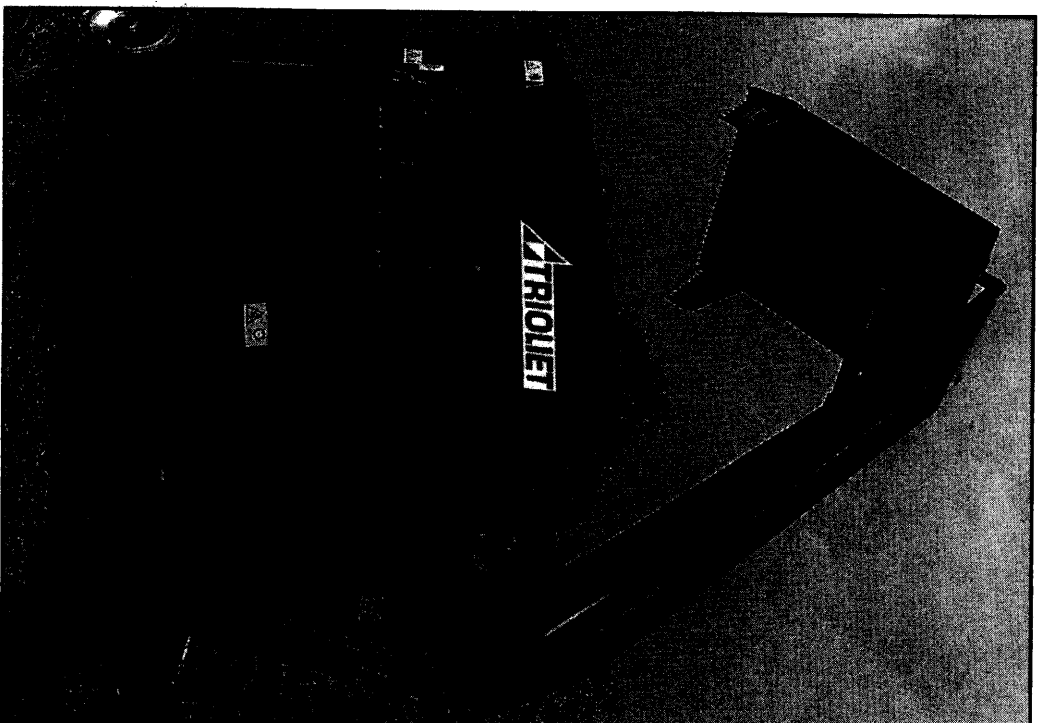
TRIOLIET

Trioliet Mullos

Meng-doseerwagen

Futter-, Misch- und Verteilwagen

GIGANT 700-900



**Onderdelen- en Werkplaatshandboek
Ersatzteilliste und Werkstatthandbuch**

Bestelnummer/ Bestellnummer 92162/3

Geldig vanaf productieserie nr. / Gültig ab Prod. Serie No.: 01

Inhoudsopgave

Afb.	
1	Stickers
2	Frame
3A	Mengvijzel en aandrijving
3B	Mengvijzel en aandrijving
4	Wielstel
5	Laadarm en snijbord
6	Messysteem
7	Stuurblok uitwendig
8	Schakelblok
9	Achtermes- en zijmescilinder
10	Krabbord
11A	Intrekcilinders
11B	Aanzetcilinders snijsysteem
11C	Aanzetcilinders kamsysteem
12	Doseerklep- en wielarmcilinder
13	Handventielen
14	Mechanische bediening
15	Electrische bediening
16	Hydraulisch remsysteem
17	Slangen hydraulisch remsysteem
18	Pneumatisch remsysteem
19A	Hydraulische weeginstallatie
19B	Weegcilinder
20	Electronische weeginstallatie
21	Slangenschema handbediening
22	Slangenschema mech.bediening
23	Slangenschema electr.bediening
24	Aansluitschema bedieningskast
25	Aftakas

Inhaltverzeichnis

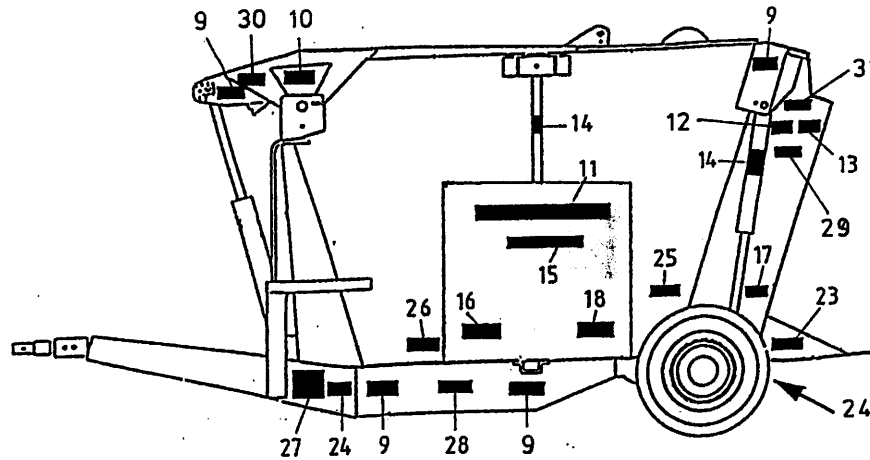
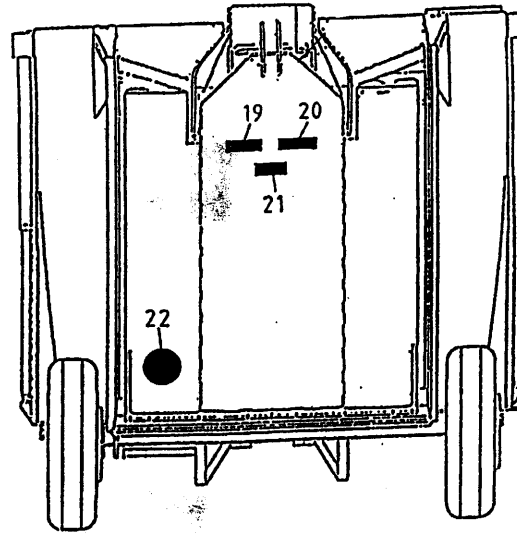
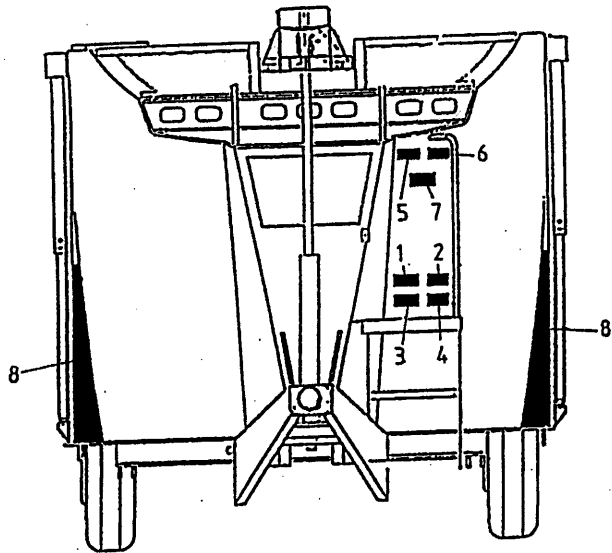
Abb.	
1	Aufkleber
2	Rahmen
3A	Schnecke und Antrieb
3B	Schnecke und Antrieb
4	Radachse
5	Ladeschwinge und Schneidplatte
6	Schneidvorrichtung
7	Umschaltventil und Schlauche
8	Umschaltventil
9	Heck- und Seitenmesserzylinder
10	Entnahmekamm
11A	Ladezylinder
11B	Vorschubzylinder Schneiden
11C	Vorschubzylinder Kamm
12	Dosierklappe und Radarmzylinder
13	Handventilen
14	Mechanische Fernbediening
15	Elektrischer Fernbediening
16	Hydraulischer Bremse
17	Schlauche hydraulischer Bremse
18	Druckluftbremse
19A	Hydraulischer Wiegeeinrichtung
19B	Wiegezylinder
20	Elektronischer Wiegeeinrichtung
21	Schaltplan Handbediening
22	Schaltplan Mech. Fernbediening
23	Schaltplan Elektr. Fernbediening
24	Schaltplan Bedienungskasten
25	Gelenkwelle

Contents

Picture	
1	Decals
2	Drawbar
3A	Auger and drive system
3B	Auger and drive system
4	Wheelaxle
5	Loading arm and cutting board
6	Cutting system
7	Control block and hoses
8	Control block
9	Cutting cylinders
10	Rake system
11A	Loading cylinder
11B	Main cylinder Cutting
11C	Main cylinder Rake
12	Unload. door and Wheelaxle cylinder
13	Manual control
14	Mechanical remote control
15	Electrical remote control
16	Hydraulic brake system
17	Hoses hydraulic brake system
18	Air brake system
19A	Hydraulic weighing system
19B	Weighing cylinder
20	Electronic weighing system
21	Hose-scheme manual control
22	Hose-scheme mech. remote control
23	Hose-scheme electr. remote control
24	Scheme electrical controlbox
25	PTO - shaft

92162/3

Afbeelding 1 : Stickers 7 - 9 Gigant
 Abbildung 1 : Aufkleber 7 - 9 Gigant
 Picture 1 : Decals 7 - 9 Gigant

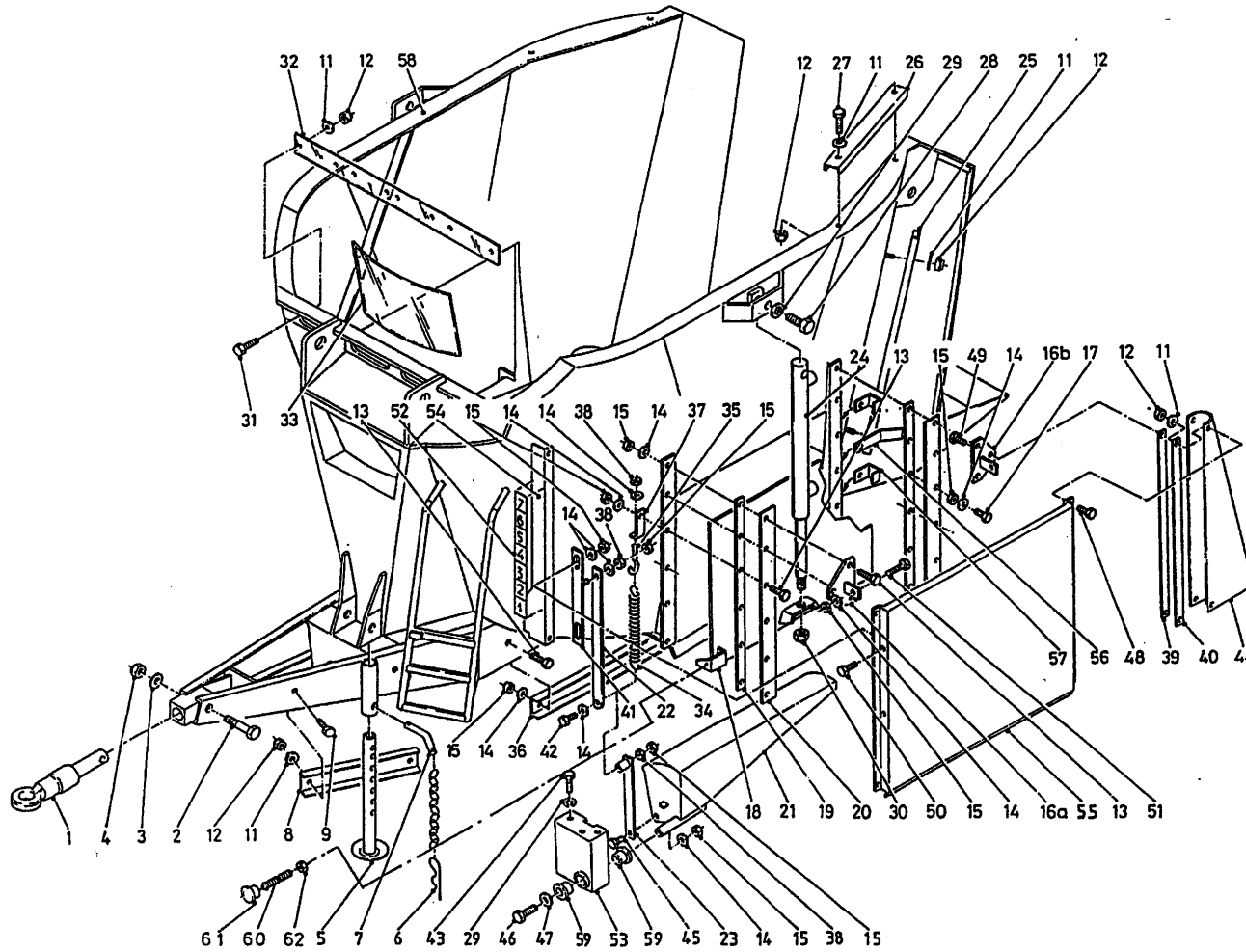


bestelnummer
 ordernummer
 Num. à commander
 Bestellnummer

1	91160	1	
2	91159	1	
3	91215	1	
4	91185	1	
5	91242	1	
6	91240	1	
7	91245	1	
8	91143	2	
9	91183	8	
10	91151	2	
11	91247	2	
12	91161	2	
13	91164	2	
14	91182	2	
15A	91301	2	7m ³
15B	91317	2	9m ³
16	91211	2	
17	91330	2	6.0 bar
18	91327	2	
19	91163	1	
20	91189	1	
21	91153	1	
22A	91331	1	8 kmh
22B	91130	1	25 kmh
23	91325	2	
24	91118	1	
25	91228	2	
26	91335	1	
27	91340	1	
28	91333	2	
29	91337	2	
30	91338	2	
31	91172	2	

92162/3

Afbeelding 2 : Frame
 Abbildung 2 : Rahmen
 Picture 2 : Frame

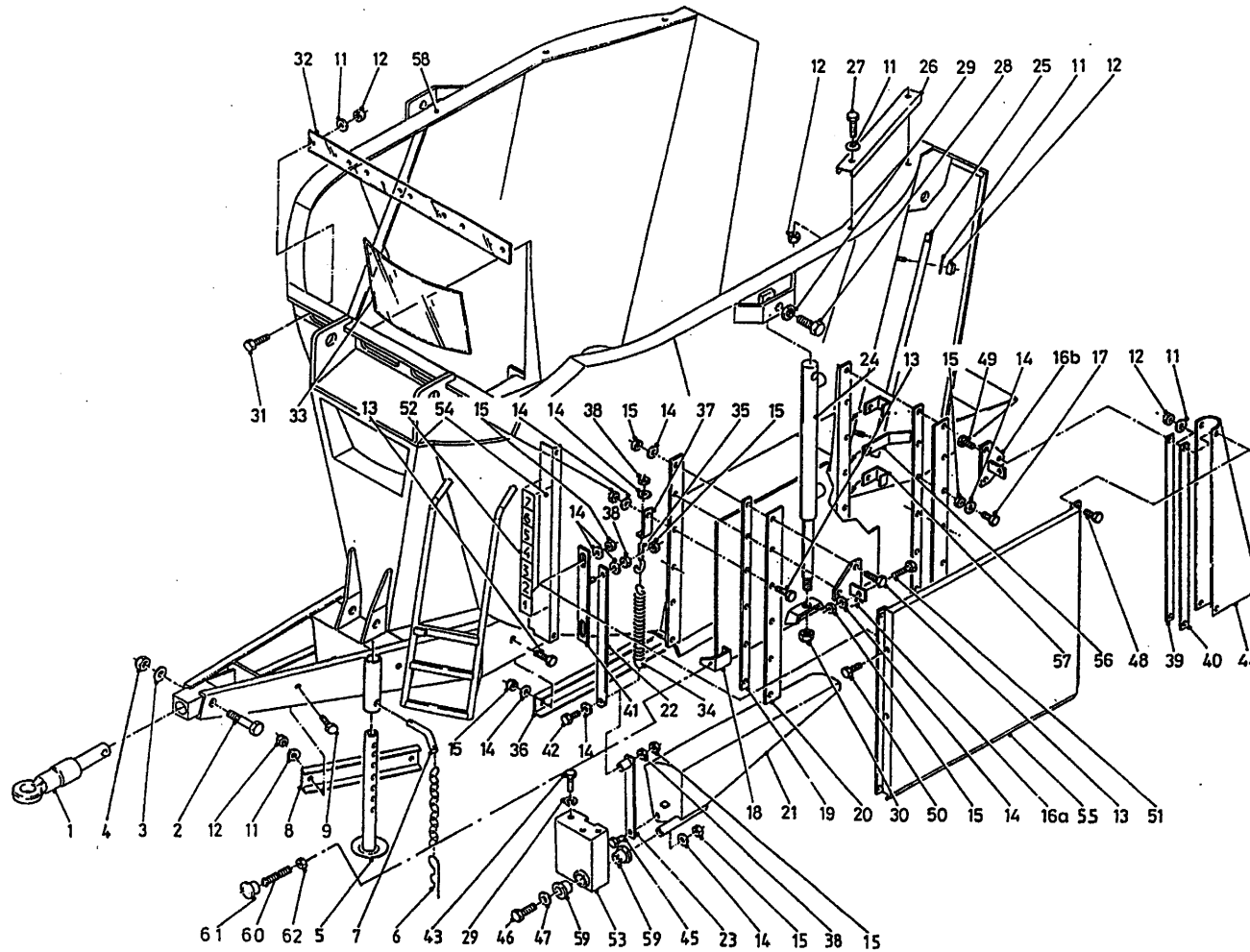


bestelnummer
 ordernummer
 Num. à commander
 Bestellnummer

1	12380	1	
2	82013	1	M20x130
3	85020	1	M20
4	86220	1	M20
5	11687	1	
6	65004	1	
7	31500	1	
8	40511	1	
9	80860	2	M8x60
10	90282	1	
11	85108	18	M8
12	86208	18	M8
13	81060	10	M10x60
14	85110	22	M10
15	86210	22	M10
16A	12588	1	
16B	12589	1	
17	81045	14	M10x45
18A	12284	1	Rechts
18B	12421	1	Links
19	26448	4	
20	26449	4	
21A	12568	1	Rechts
21B	12567	1	Links
22	27411	2	
23	12582	2	
24	51154	2	
25A	40514	2	→I 01
25B	40560	2	I→ 02
26	40513	2	→I 01
27	80840	4	M8x40
28	81690	2	M16x90
29	85016	8	M16
30	86216	2	M16
31	83825	8	M8x25
32	60326	1	

92162/3

Abbeelding 2 : Frame
 Abbildung 2 : Rahmen
 Picture 2 : Frame

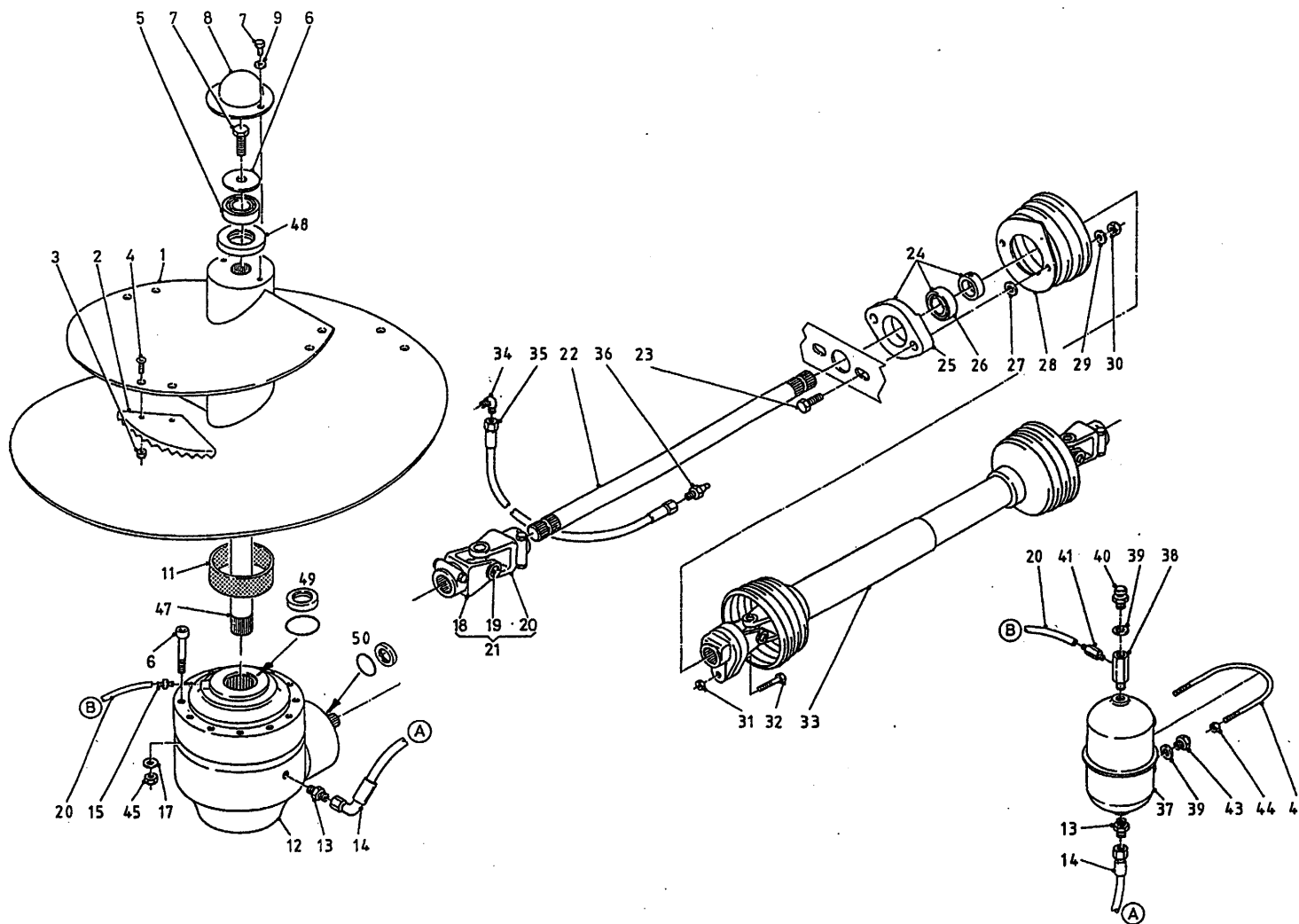


bestelnummer
 ordernummer
 Num. à commander
 Bestellnummer

33	60325	1	
34	65021	2	
35	84174	2	M10 x 80 x 14
36	40510	1	
37	27412	2	
38	86110	2	M10
39	27416	4	
40	27427	4	
41	12591	2	
42	81070	2	M10 x 70
43	81636	6	M16 x 35
44A	60347	2	
44B	60348	2	
45	81041	2	M10 x 40
46	81226	2	M12 x 25
47	85115	2	M12
48	80821	4	M8 x 20
49	80831	4	M8 x 30
50	81050	4	M10 x 50
51	81031	4	M10 x 30
52	91143	2	
53A	12570	1	Rechts
53B	12569	1	Links
54A	40609	1	Links
54B	40610	1	Rechts
55	12587	2	
56	27489	2	
57	40559	4	
58A	12279	1	7m ³
58B	12505	1	9m ³
59	51751	4	
60	84947	2	M6 x 100
61	60368	2	
62	86106	2	M6

92162/3

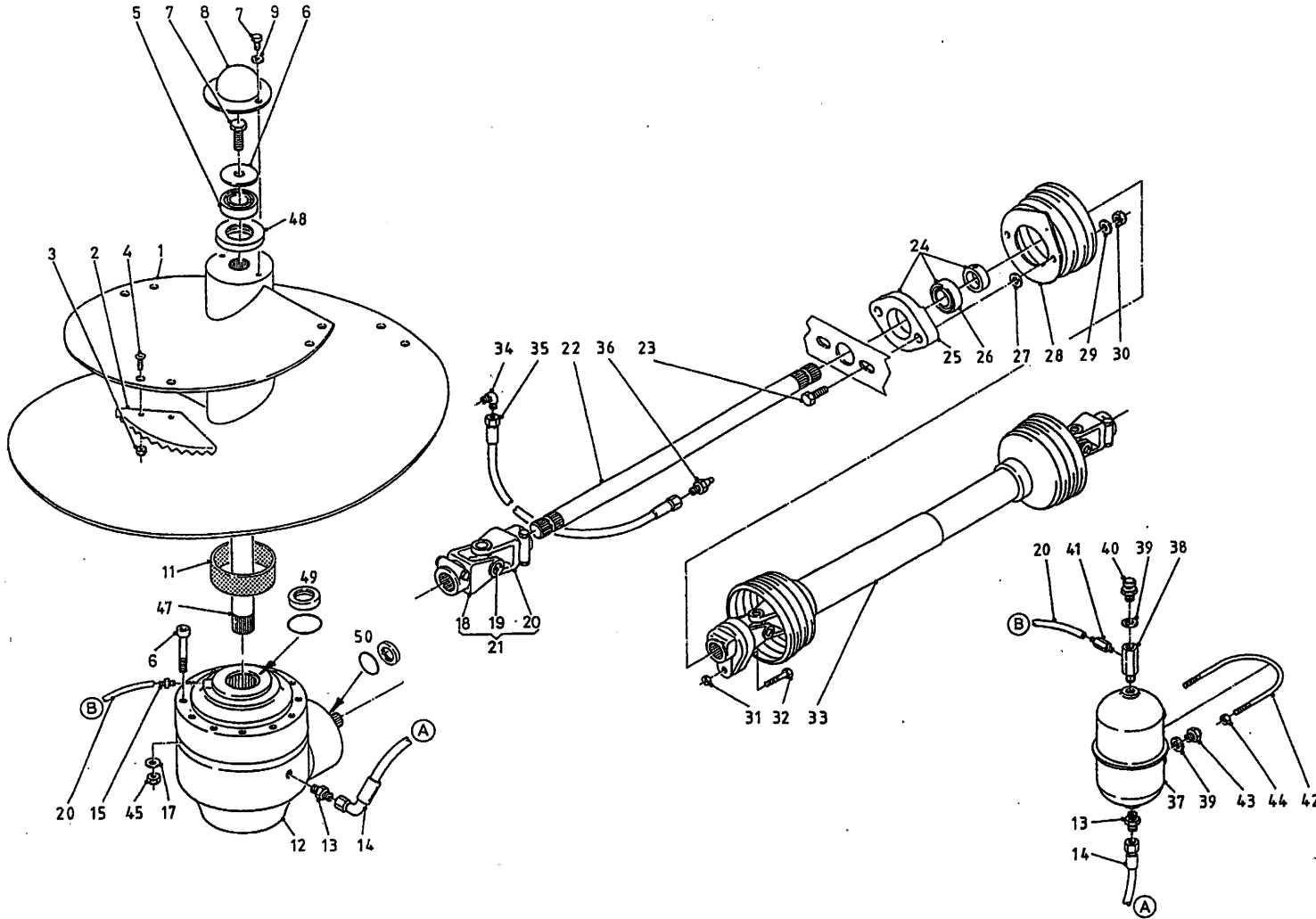
Afbeelding 3A : Mengvijzel en aandrijving
 Abbildung 3A : Schnecke und Antrieb Serie
 Picture 3A : Auger and drive system



bestelnummer		ordernummer	
Num. à commander		Bestellnummer	
1A	12359	1	7m ³
1B	12544	1	9m ³
2	31841	4	
3	86216	8	M16
4	84121	8	M16x45
5	70143	1	
6	26783	1	
7	81626	3	M16x25
8	26871	1	
9	85116	2	M16
11	51867	1	
12	90650	1	
13	X50112	2	
14	W50665	1	3/8" 1850 RH
15	50196	1	
16	84487	12	M14x140
17	85114	12	M14
18	90562	2	
19	90561	1	
20	50950	1	L=2800
21	90798	1	1 3/8"-6 / 1 3/4"-20
22A	31920	1	7m ³ L=1100
22B	32062	1	9m ³ L=1230
23	81071	2	M10 x 70
24	70059	1	
25	70089	1	
26	70090	1	
27	85113	2	M10
28	90499	1	
29	85010	2	M10
30	86110	2	M10
31	86208	1	M8
32	80860	1	M8x60
33A	90688	1	7m ³ → I 01
33B	90797	1	7m ³ I → O2 / 9m ³
34	50107	1	
35	50957	1	1/4"1520RR
36	89518	1	
37	90443	1	
38	50176	1	

92162/3

Afbeelding 3A : Mengvijzel en aandrijving
 Abbildung 3A : Schnecke und Antrieb Serie
 Picture 3A : Auger and drive system



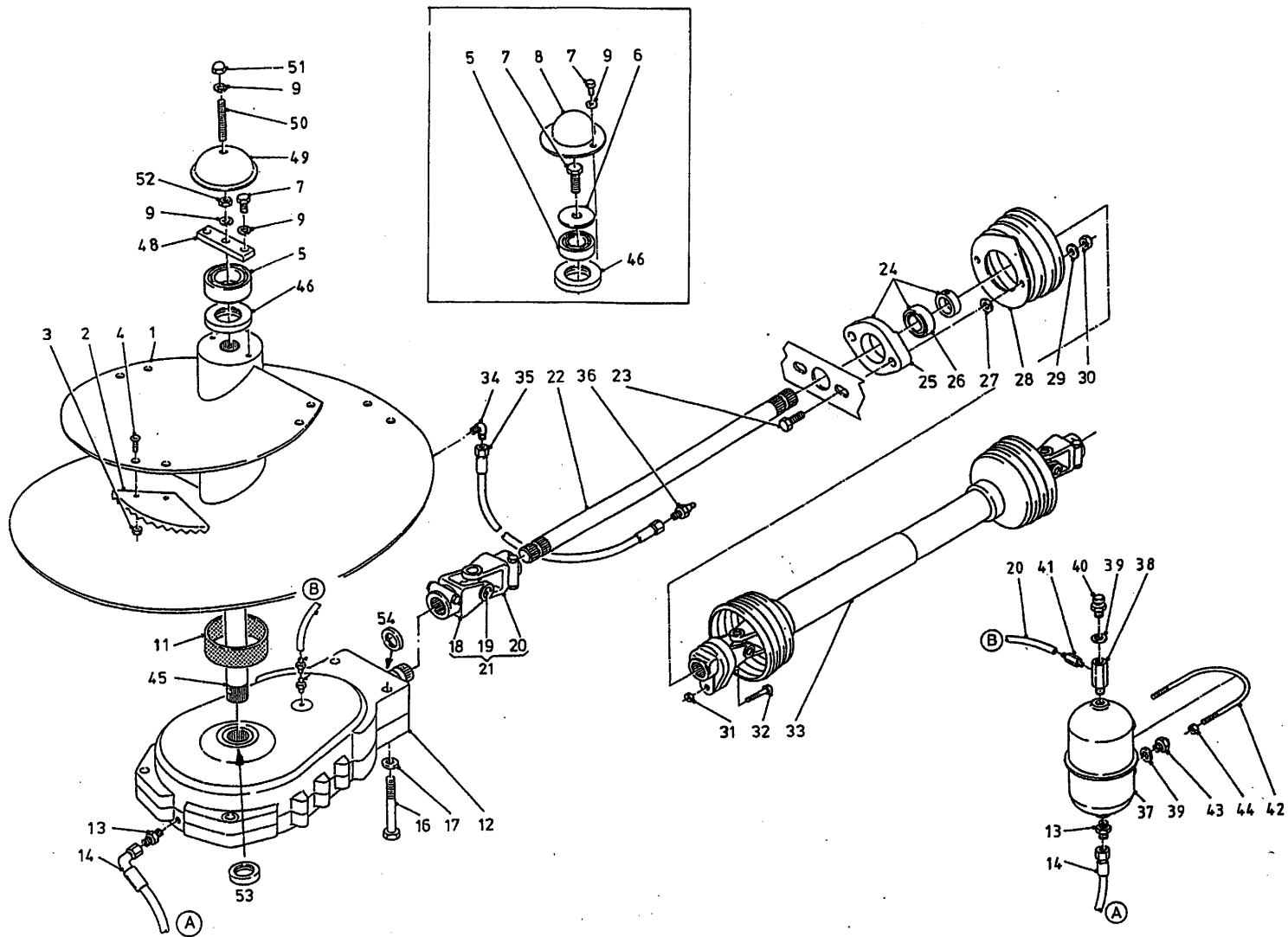
bestelnummer	ordernummer	Num. à commander	Bestellnummer
39	85215	3	
40	90567	1	
41	50197	1	
42	84191	1	
43	90566	2	
44	86206	2	M6
45	86214	12	M14
46	90563	1	
47	31933	1	L = 675
48	70145	1	
49	05443	1	
50	05444	1	

92162/3

Afbeelding 3B : Mengvijzel en aandrijving

Abbildung 3B : Schnecke und Antrieb Serie

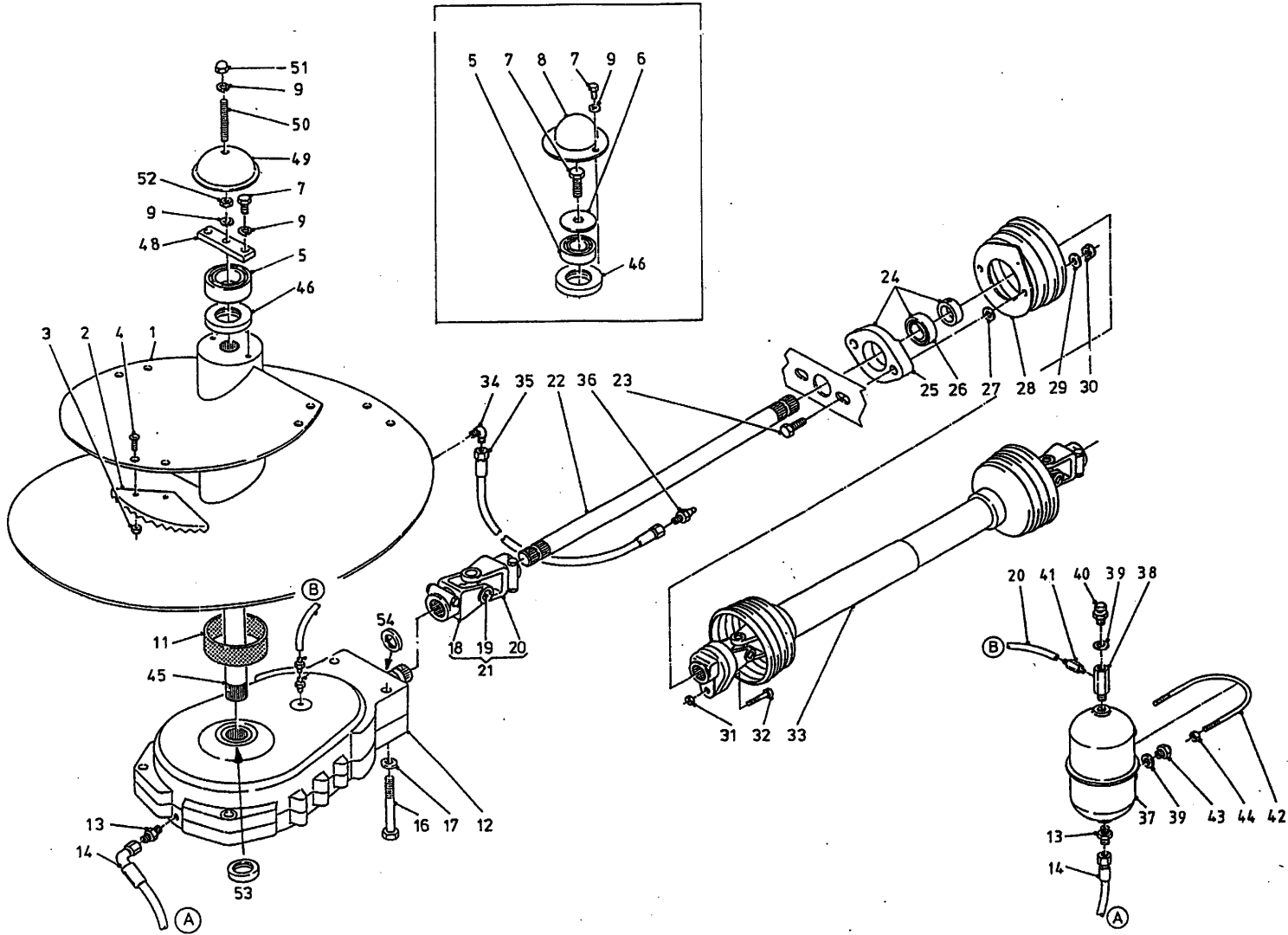
Picture 3B : Auger and drive system



bestelnummer		ordernummer	
Num. à commander		Bestellnummer	
1A	12198	1	7m ³
1B	12716	1	9m ³
2	31841	4	
3	86216	8	M16
4	84121	8	M16x45
5	70143	1	
6	26783	1	
7	81626	3	M16x25
8	26871	1	
9	85116	4	M16
11	51867	1	
12	90727	1	
13	X50112	2	
14	W50665	1	3/8" 1850 RH
15	50199	1	
16	82413	4	M24x130
17	85024	4	M24
18	90730	2	
19	90729	1	
20	50950	1	
21	90686	1	1 3/8" - 6 / 1 3/8" - 6
22A	31793	1	7m ³ L=870→I 01
22B	31792	1	7m ³ L=920→I 02
22C	32143	1	9m ³ L=1020→O2
23	81071	2	M10 x 70
24	70059	1	
25	70089	1	
26	70090	1	
27	85113	2	M10
28	90499	1	
29	85010	2	M10
30	86110	2	M10
31	86208	1	M8
32	80860	1	M8x60
33A	90688	1	7m ³ →I 01
33B	90797	1	7m ³ I→ O2 / 9m ³
34	50107	1	
35	50957	1	1/4" 1520RR
36	89518	1	
37	90443	1	
38	50176	1	

92162/3

Afbeelding 3B : Mengvijzel en aandrijving
 Abbildung 3B : Schnecke und Antrieb Serie
 Picture 3B : Auger and drive system

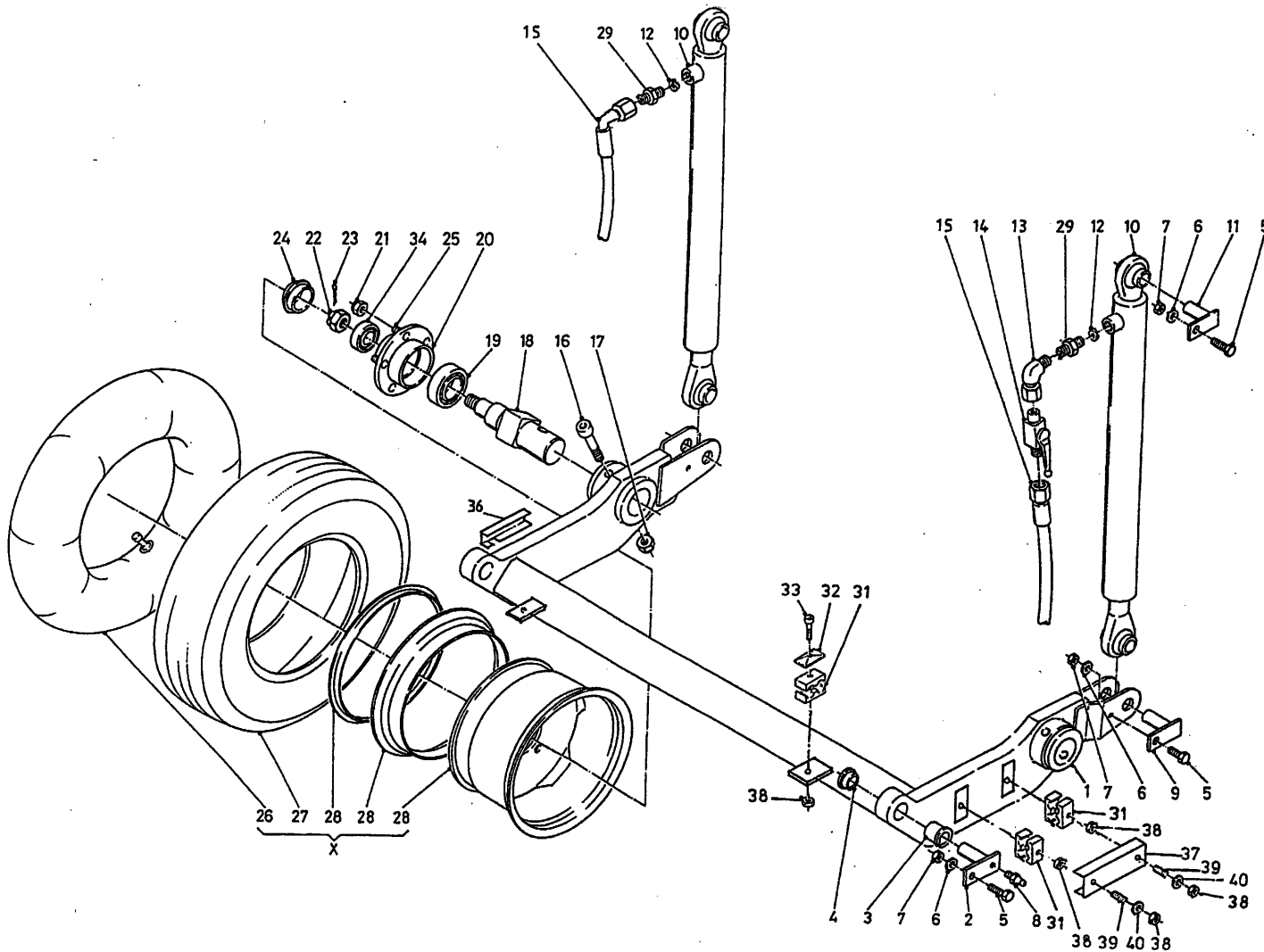


bestelnummer
 ordernummer
 Num. à commander
 Bestellnummer

39	85215	3	
40	90567	1	
41	50200	1	
42	84191	1	
43	90566	2	
44	86206	2	M6
45	31832	1	7m ³ /9m ³ L = 880
46	70145	1	
47	50194	1	
48	27937	1	
49	27690	1	
50	84001	1	M16 x 140
51	86937	1	M16
52	86116	1	
53	70156	1	
54	70161	1	

92162/3

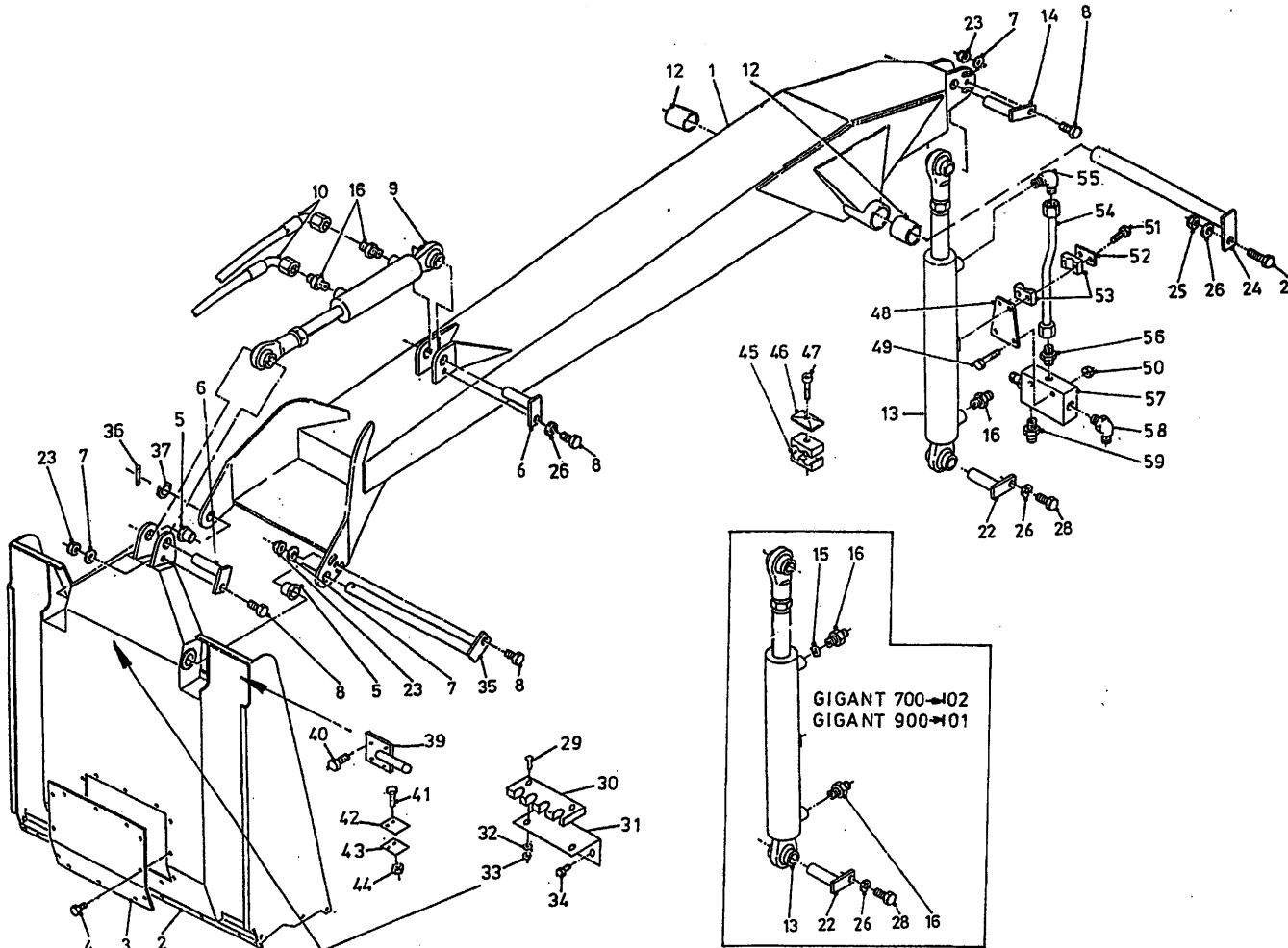
Afbeelding 4 : Wielas
 Abbildung 4 : Radachse
 Picture 4 : Wheelaxle



bestelnummer		ordernummer	
Num. à commander		Bestellnummer	
1A	12296	1	7m ³
1B	12610	1	9m ³
2	11628	2	
3	51774	2	
4	51751	2	
5	81236	6	M12x35
6	85112	6	M12
7	86212	6	M12
8	89505	1	
9	11760	2	
10A	51152	2	7m ³ → 03 9m ³ → 01
10B	51193	2	7m ³ → 04 9m ³ → 02
11	11627	2	
12	53202	2	Ø 1mm
13	50122	2	
14	51032	1	
15	W52637	2	3/8" 2500 RH
16	84485	2	M16x140
17	86516	2	M16
18	31954	2	
19	70057	2	30211
20	90308	2	
21	86922	12	M18x1.5 H = 25
22	90223	2	M33x2
23	90224	2	
24	90225	2	
25	84927	12	M18x1.5 L = 50
26A	90976	2	600/650-15 7m ³ → 03
26B	90600	2	700 - 15 7m ³ → 04 9m ³
27A	90601	2	27x7.75 - 15 7m ³ → 03
27B	90808	2	H29 x 9.00-15 7m ³ → 04 9m ³
28	90809	2	6.00 x 15
29	50141	2	
31	90427	6	
32	90428	2	
33	80641	2	M6x40
34	70056	2	30208
35	90728	2	250 x 15/8.15
36	40659	1	
37	40658	1	
38	86106	6	M6
39	84201	4	M6x40
40	85107	4	M6
X	90682	2	→ 03 7m ³ 27 x 7.75-15
X	90807	2	7m ³ → 04 9m ³ H29 x 9.00-15

92162/3

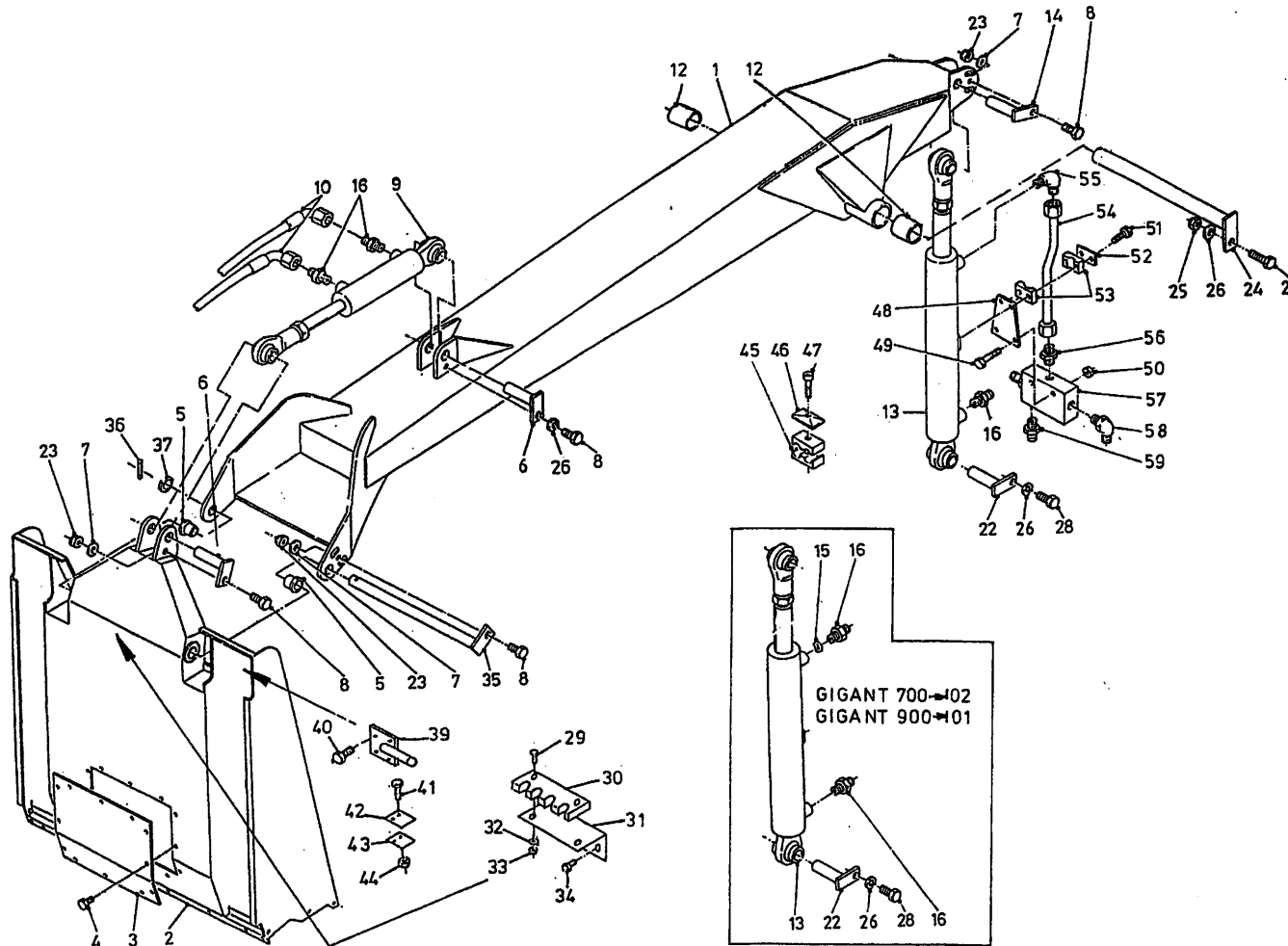
Afbeelding 5 : Laadarm en snijbord
 Abbildung 5 : Ladeschwinge und Schneidplatte
 Picture 5 : Loading arm and cutting board



bestelnummer		ordernummer	
Num. à commander		Bestellnummer	
1A	12292	1	7m ³
1B	12461	1	9m ³
2	12304	1	
3	26703	1	
4	84703	6	M10 x 20
5	51751	2	
6	11627	2	
7	85112	3	M12
8	81236	4	M12x35
9A	51151	1	7m ³
9B	51176	1	9m ³
10	W52631	2	3/8" 5400RH
12	51879	2	
13A	51150	1	7m ³
13B	51175	1	9m ³
14A	12643	1	7m ³
14B	12614	1	9m ³
15	53274	1	Ø1,5 mm
16	X50113	2	
22	12337	1	
23	86212	4	M12
24A	12286	1	7m ³
24B	12496	1	9m ³
26	85112	3	M12
27	81260	1	M12x60
28	81226	1	M12x25
29	80835	1	M8 x 35
30	60327	1	
31	26739	1	
32	85108	2	M8
33	86208	2	M8
34	84703	2	M10 x 20
35	12295	1	
36	88145	1	Ø10 x 45
37	85335	1	
39	12485	2	
40	81660	8	M16 x 60
41	80630	4	M6 x 30
42	27101	2	
43	27100	2	
44	86206	1	

92162/3

Afbeelding 5 : Laadarm en snijbord
 Abbildung 5 : Ladeschwinge und Schneidplatte
 Picture 5 : Loading arm and cutting board

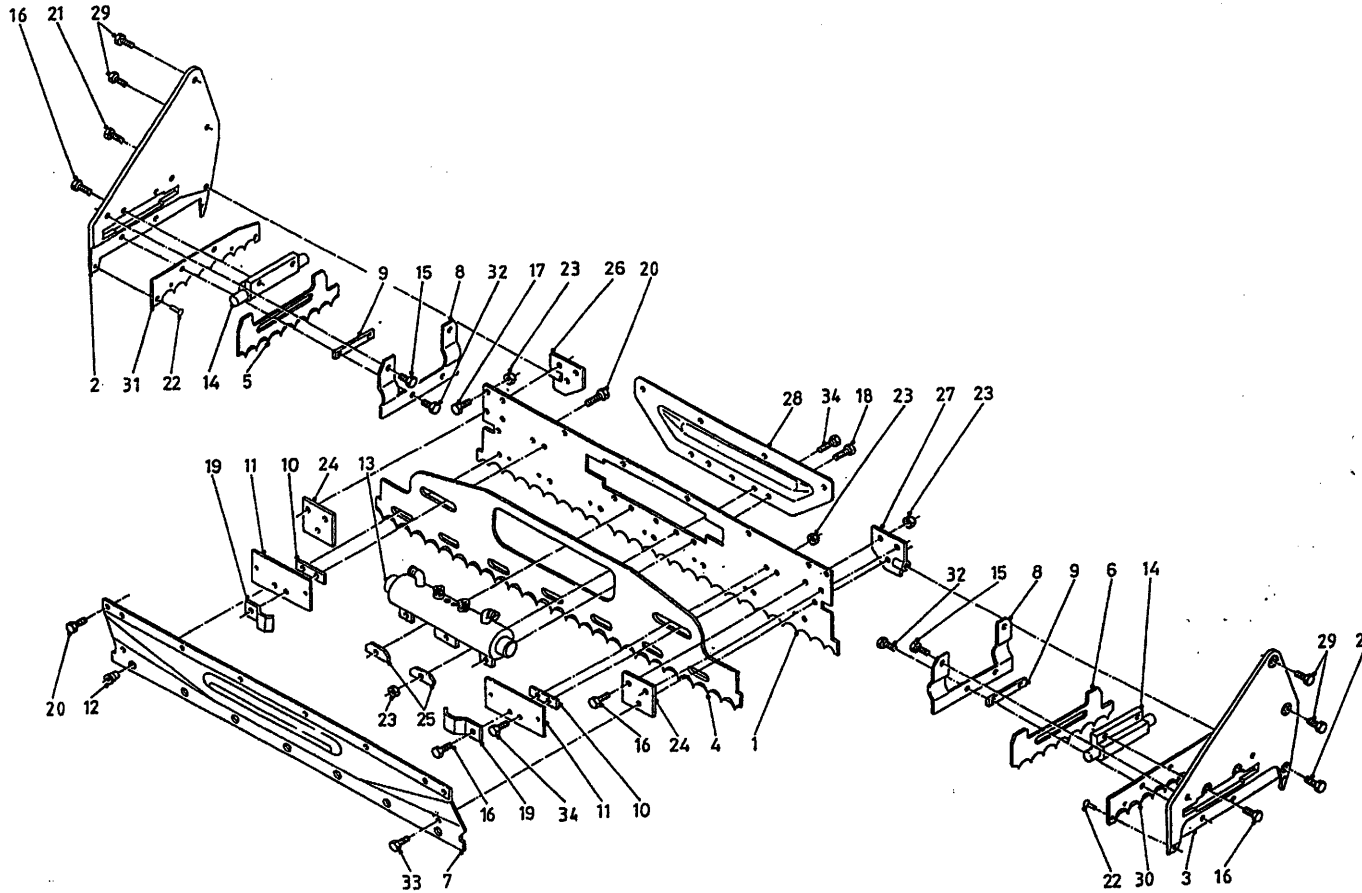


bestelnummer
 ordernummer
 Num. à commander
 Bestellnummer

45A	90159	1	Ø 18
45B	90533	1	Ø 20
46	90144	2	
47	80850	2	
48	40612	1	
49	80640	2	M6 x 40
50	86106	2	M6
51	80635	1	M6 x 35
52	90162	1	
53	90160	1	
54A	52653	1	L = 255 7m³
54B	52652	1	L = 355 9m³
55	X50101	1	
56	50116	1	
57	53459	1	
58	X50201	1	
59	X50112	1	

92162/3

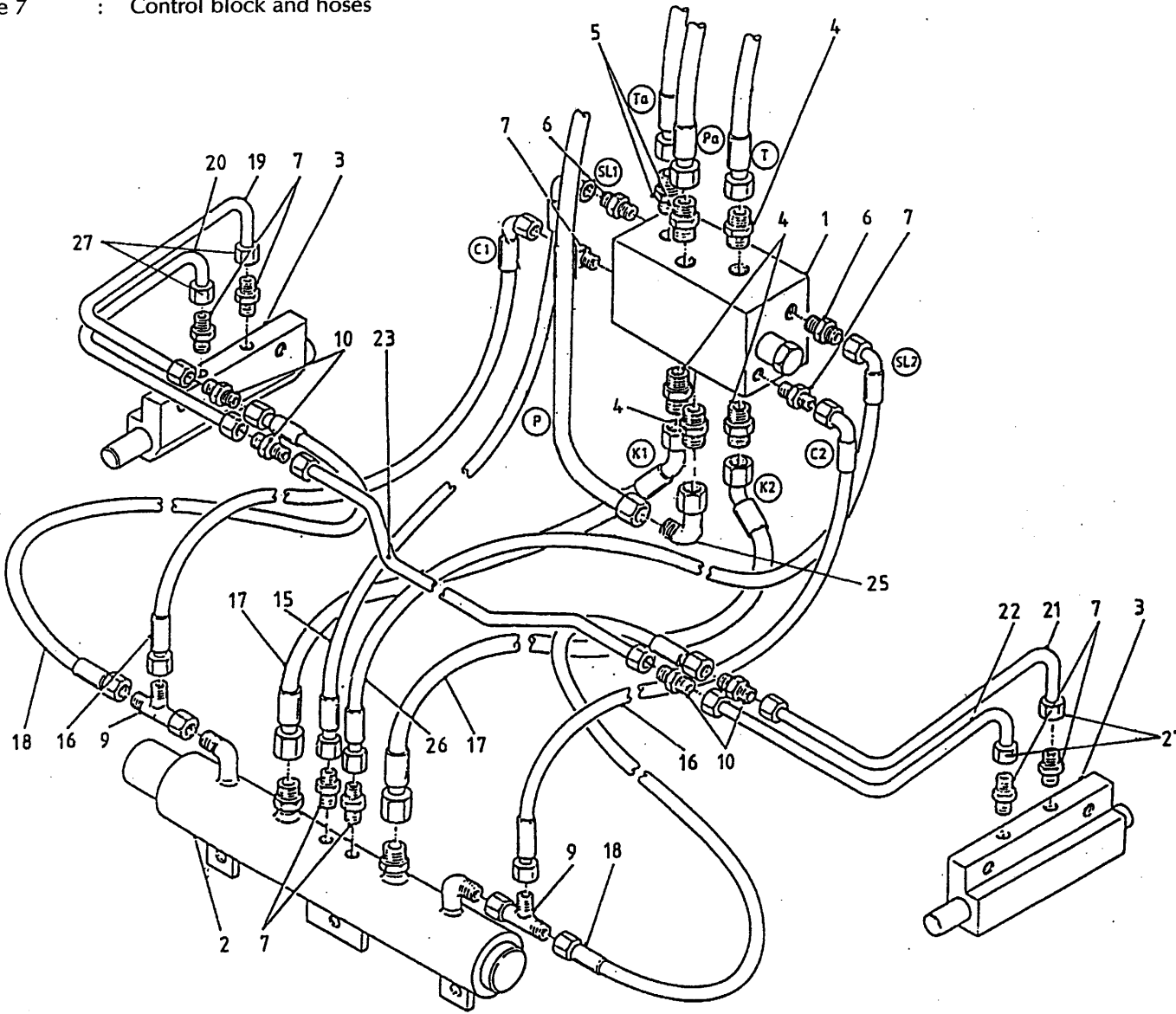
Afbeelding 6 : Messysteem
 Abbildung 6 : Schneidvorrichtung
 Picture 6 : Cutting system



bestelnummer	ordernummer	Num. à commander	Bestellnummer
1	26846	1	4.8mm
2	12404	1	
3	12403	1	
4	26108	1	
5	25653	1	
6	25652	1	
7	26379	1	
8	23853	2	
9	25657	2	
10	25636	2	
11	26307	2	
12	31862	7	
13	51119	1	
14	51115	2	
15	83916	4	M10x16
16	83921	10	M10 x 25
17	84925	8	M10 x 23
18	83920	3	M10 x 20
19	24153	2	
20	84942	10	M10 x 16
21	83937	2	M12 x 30
22	85246	4	Ø 5 x 20
23	86810	20	M10
24	26184	2	
25	25048	2	
26	12414	1	
27	12413	1	
28	26839	1	
29	83931	4	M16 x 30
30	26347	1	
31	26348	1	
32	84926	4	M10 x 19
33	83915	2	M10 x 30
34	83934	4	M10 x 22

92162/3

Afbeelding 7 : Stuurblok uitwendig
 Abbildung 7 : Umschaltventil und schlauche
 Picture 7 : Control block and hoses

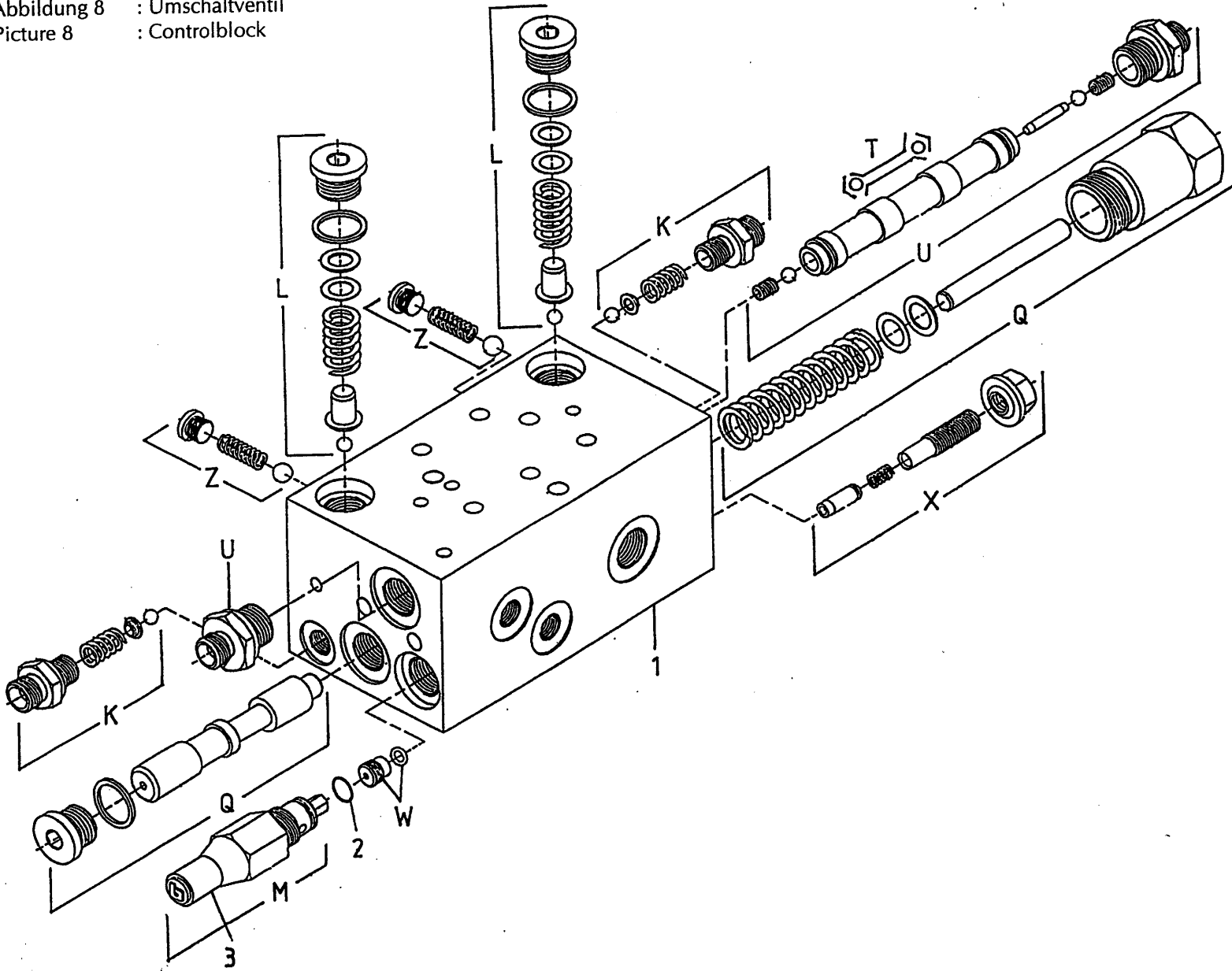


bestelnummer
 ordernummer
 Num. à commander
 Bestellnummer

1	53198	1	
2	51119	1	
3	51115	2	
4	X50102	4	
5	X50113	2	
6	X50114	2	
7	X50104	8	
9	X50300	2	
10	X50135	4	
15	W50971	1	¼" 400 H 20°
16	W50895	2	¼" 300 RH
17	W50970	2	½" 290 R45°
18	W52604	2	¼" 340 RR
19	50944	1	
20	50943	1	
21	50946	1	
22	50945	1	
23	52605	1	L=910
26	W50972	1	¼" 400 H 20°
27	50430	4	RVS

92162/3

Afbeelding 8 : Schakelblok
 Abbildung 8 : Umschaltventil
 Picture 8 : Controlblock

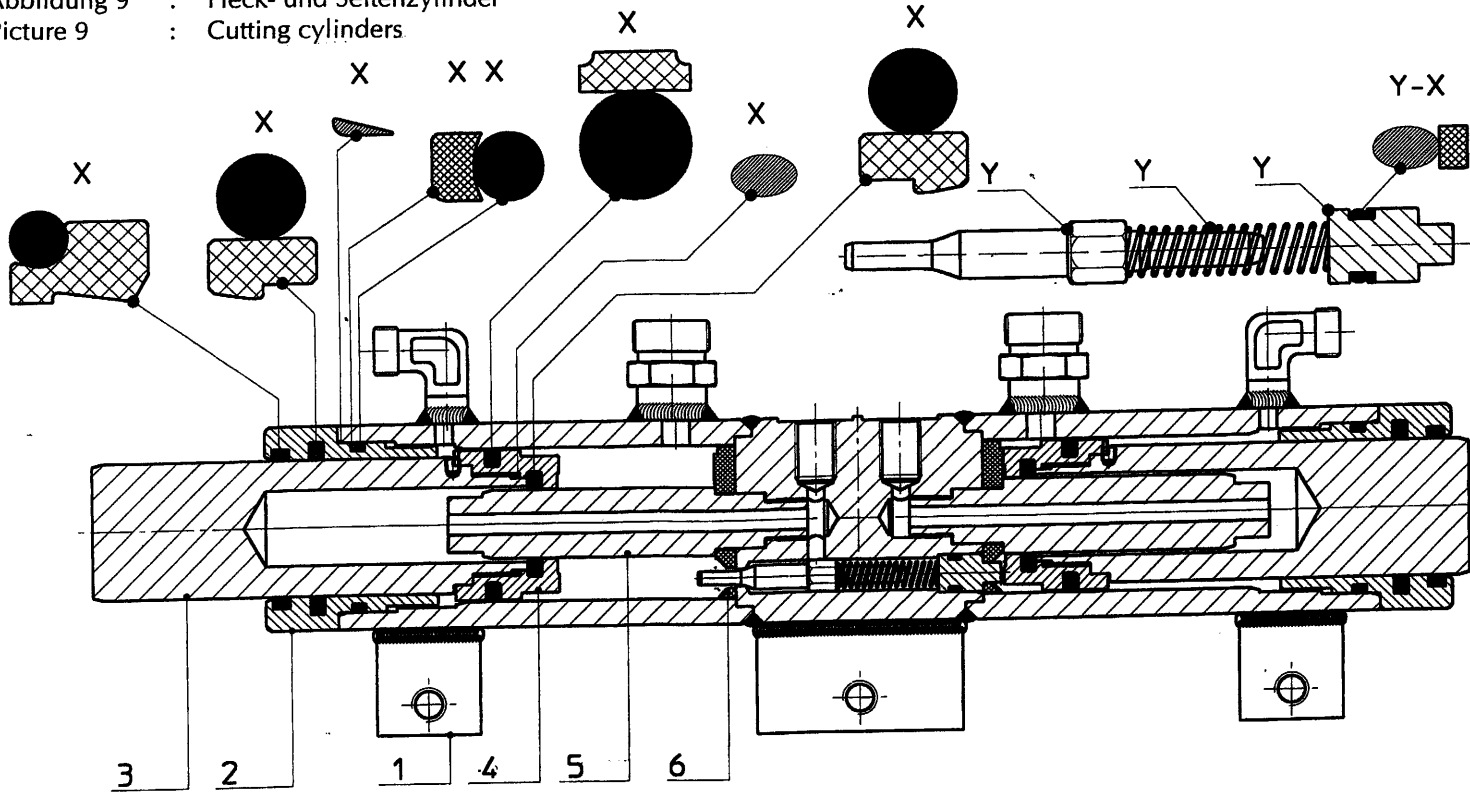


bestelnummer
 ordernummer
 Num. à commander
 Bestellnummer

1	53198	1	
2	78053	1	12x1.5
3	60260	1	
K	05049	2	10 bar
L	05264	2	200 bar
M	05265	1	
U	53150	1	
W	53256	1	
X	53257	1	
Z	05267	2	

92162/3

Afbeelding 9 : Achter-en zijmescilinder
 Abbildung 9 : Heck- und Seitenzylinder
 Picture 9 : Cutting cylinders

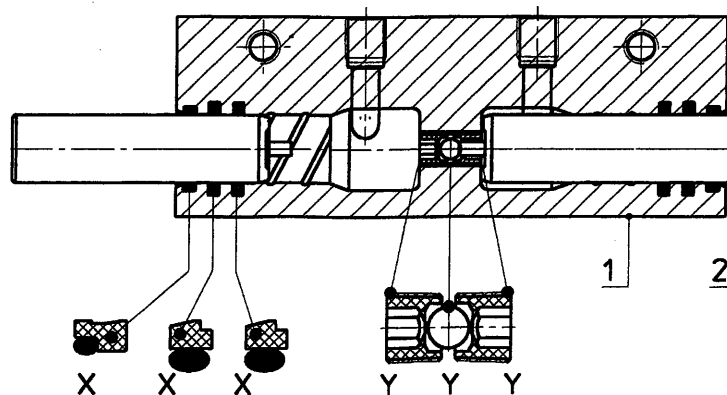


bestelnummer
 ordernummer
 Num. à commander
 Bestellnummer

51119

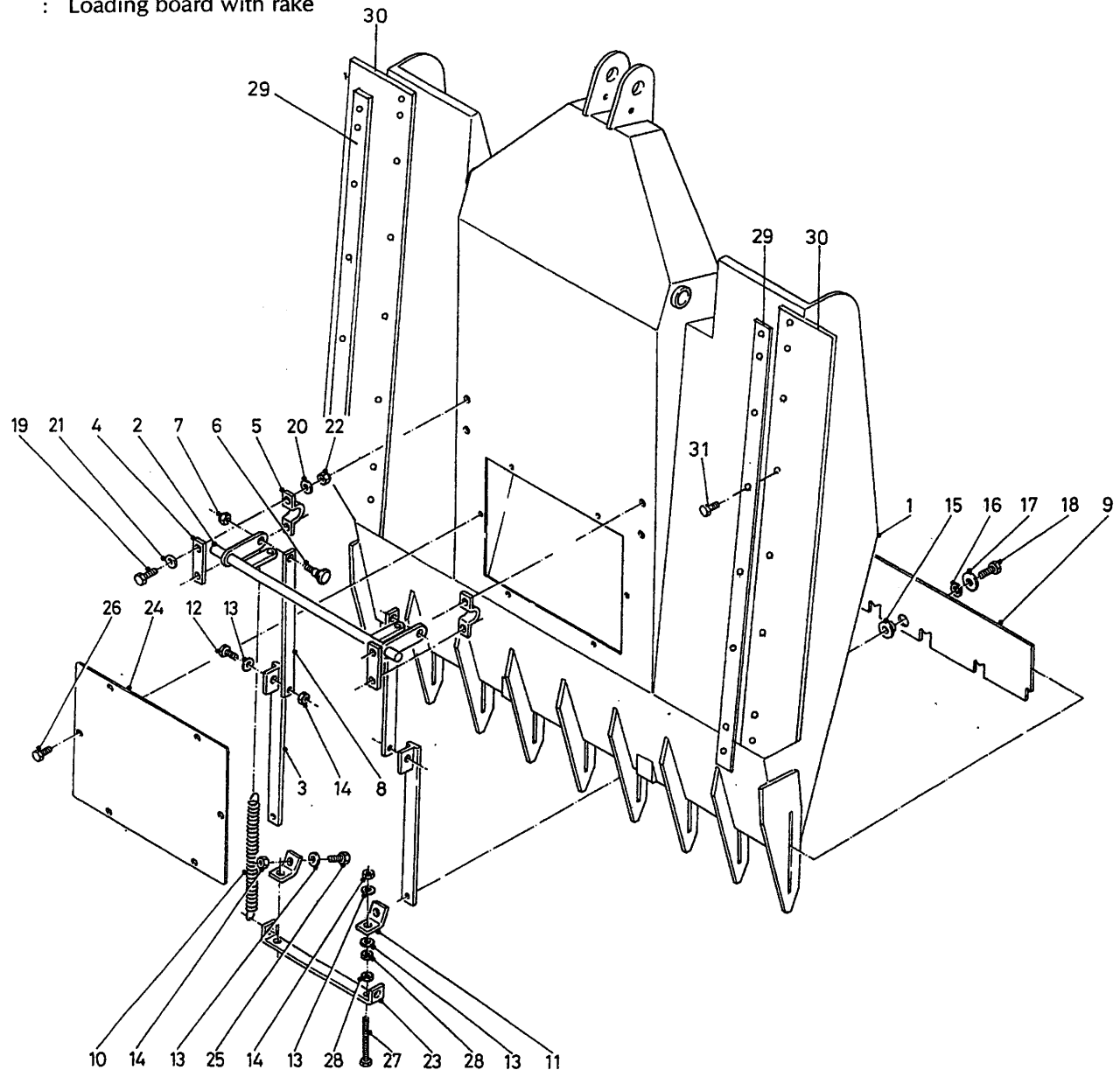
1	12106	1	
2	31421	2	
3	31455	2	1 ring
4	31453	2	
5	31454	2	18 mm
6	31428	2	
X	05306	1	
Y	05297	1	

51115



1	31772	1	
2	31436	2	
X	05294	1	
Y	05298	1	

92162/3
 Afbeelding 10 : Krabbord
 Abbildung 10 : Entnahmeplatte mit kamm
 Picture 10 : Loading board with rake



bestelnummer		ordernummer	
Num. à commander		Bestellnummer	
1	12600	1	
2	12200	1	
3	12203	2	
4	25513	2	
5	25514	2	
6	84923	2	M16 x 40
7	86216	2	M16
8	26132	2	
9	27538	1	
10	65021	2	
11	27450	2	
12	81245	2	M12 x 45
13	85112	8	M12
14	86212	4	M12
15	31840	2	
16	85012	2	M12
17	85119	2	M12
18	81231	2	M12 x 30
19	81051	4	M10 x 50
20	85010	4	M10
21	85110	8	M10
22	86210	4	M10
23	27451	1	
24	26703	1	
25	81226	2	M12 x 25
26	84703	6	M10 x 20
27	81217	2	M12 x 160
28	86112	4	M12
29	27540	2	
30	60353	2	
31	83915	16	M 10 x 30

92162/3

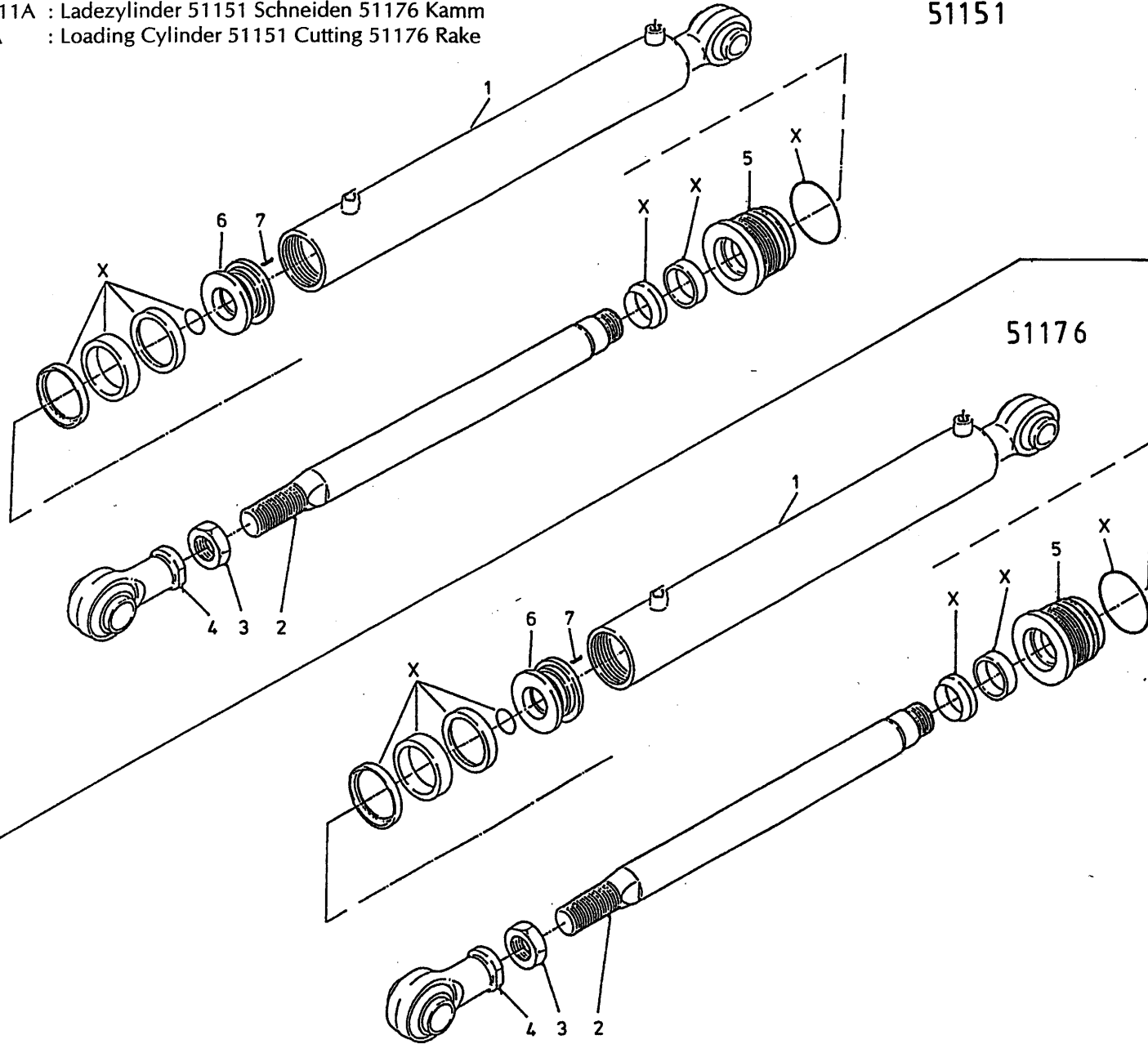
Afbeelding 11A : Intrekcilinder 51151 snijden 51176 krab

Abbildung 11A : Ladezylinder 51151 Schneiden 51176 Kamm

Picture 11A : Loading Cylinder 51151 Cutting 51176 Rake

51151

51176



bestelnummer
ordernummer
Num. à commander
Bestellnummer

51151 7m³ / 9m³

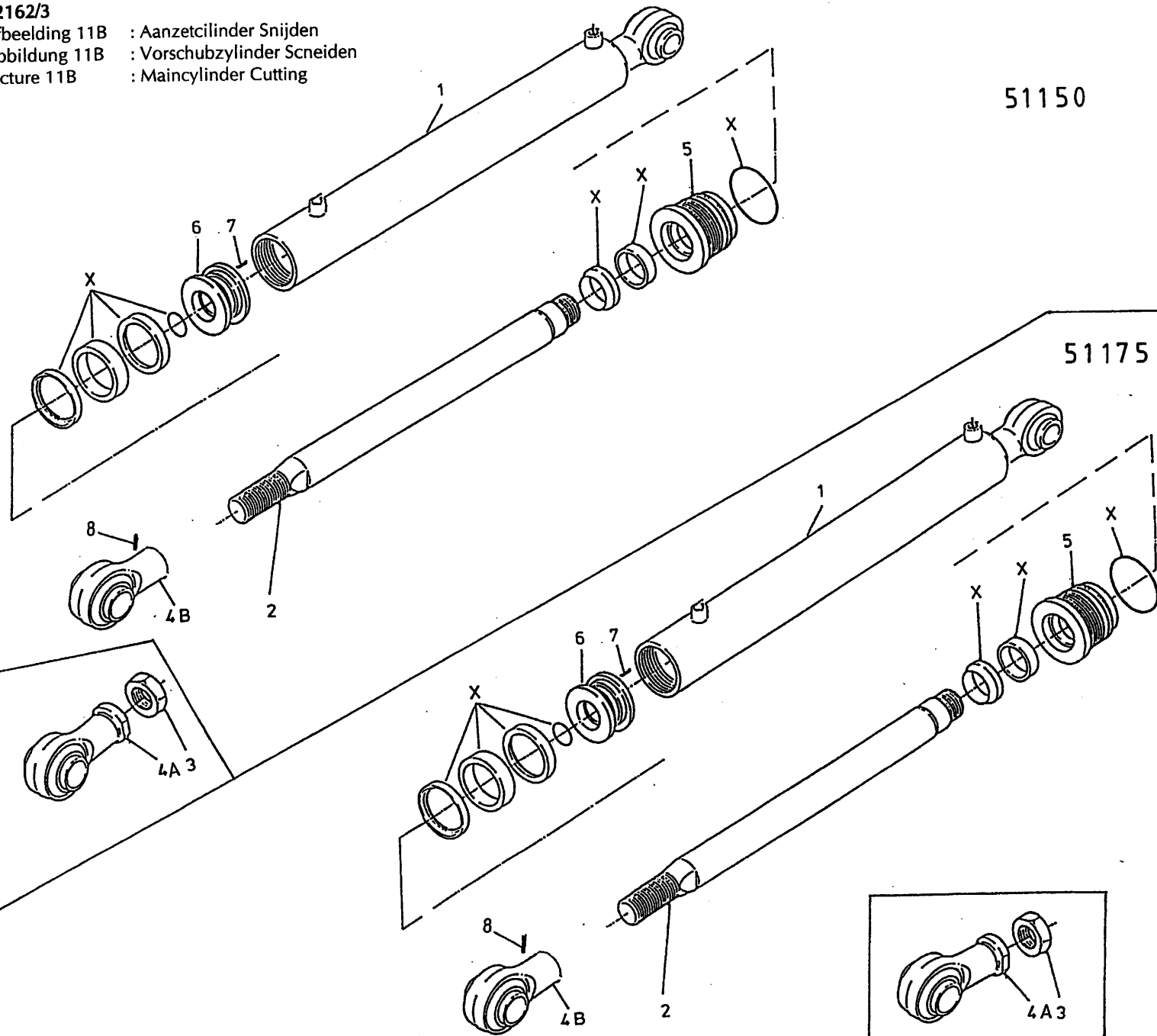
1	12267	1	Ø 90
2	31892	1	
3	86140	1	M40x2
4	11671	1	
5	30855	1	
6	30856	1	
7	84119	1	M6x10
X	05200	1	

51176 7m³ / 9m³

1	12562	1	Ø 102
2	32053	1	
3	86140	1	M40 x 2
4	11671	1	
5	31741	1	
6	31446	1	
7	84119	1	M6 x 10
X	05350	1	

92162/3

Afbeelding 11B : Aanzetcilinder Snijden
 Abbildung 11B : Vorschubzylinder Schneiden
 Picture 11B : Maincylinder Cutting



51150

51175

bestelnummer
 ordernummer
 Num. à commander
 Bestellnummer

51150 7m³

1	12301	1	∅ 125
2A	31896	1	
2B	32098	1	
3	86140	1	M40x2 → 01
4A	11671	1	→ 01
4B	12634	1	↳ 02
5	31898	1	
6	31899	1	
7	84119	1	M6x10
8	84106	1	M12 x 12
X	05387	1	

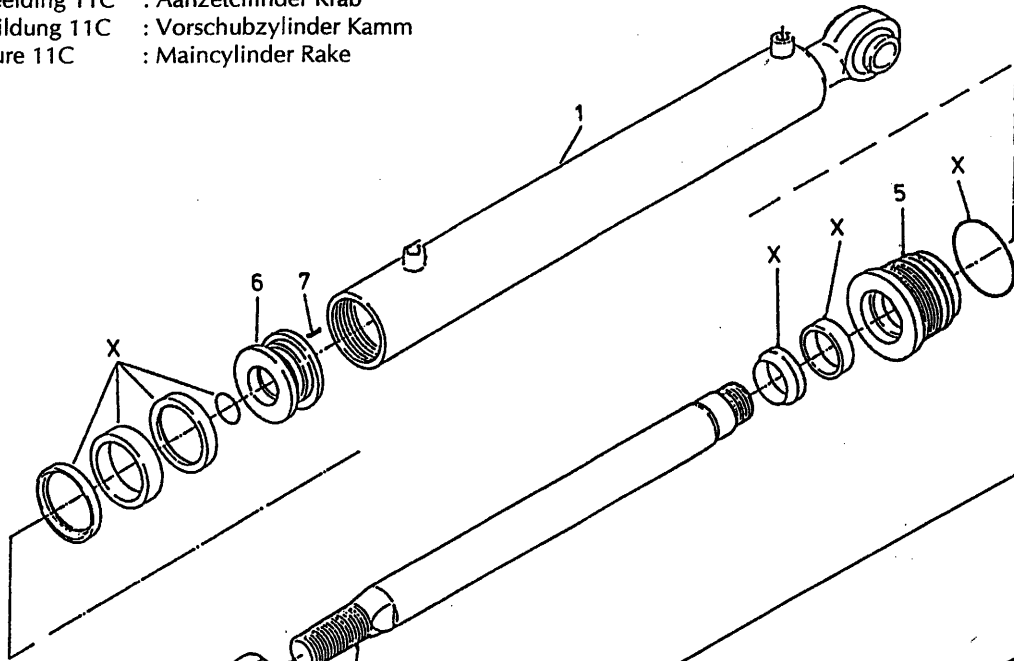
51175 9m³

1	12561	1	∅ 125
2A	32051	1	
2B	32100	1	
3	86140	1	M40 x 2 → 01
4A	11671	1	→ 01
4B	12634	1	↳ 02
5	31898	1	
6	31899	1	
7	84119	1	M6 x 10
8	84106	1	M12 x 12
X	05387	1	

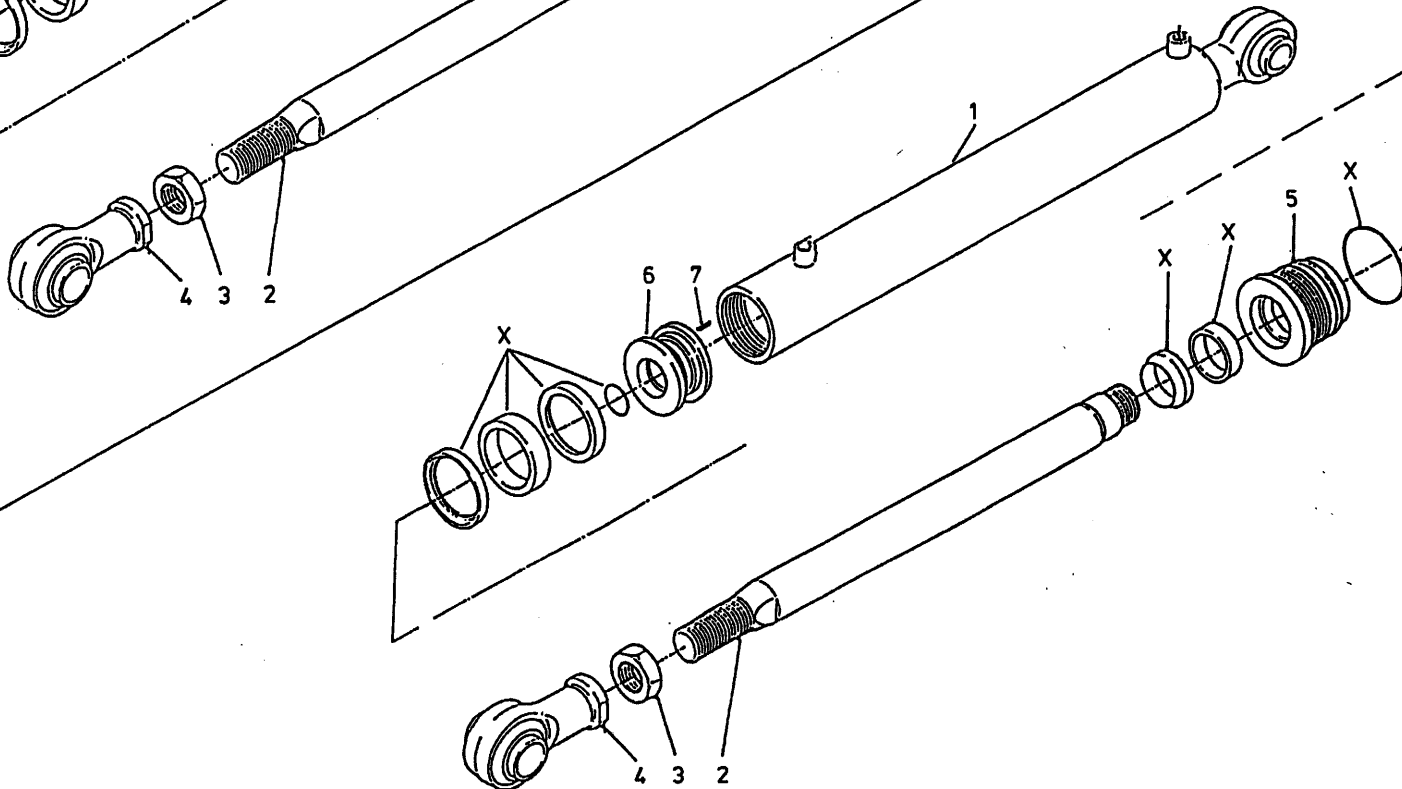
92162/3

Afbeelding 11C : Aanzetcilinder Krab
 Abbildung 11C : Vorschubzylinder Kamm
 Picture 11C : Maincylinder Rake

51178



51177



bestelnummer
 ordernummer
 Num. à commander
 Bestellnummer

51178 7m³

1	12564	1	Ø 102
2	32056	1	
3	86140	1	M40x2
4	11671	1	
5	32034	1	
6	30010	1	
7	84119	1	M6x10
X	05422	1	

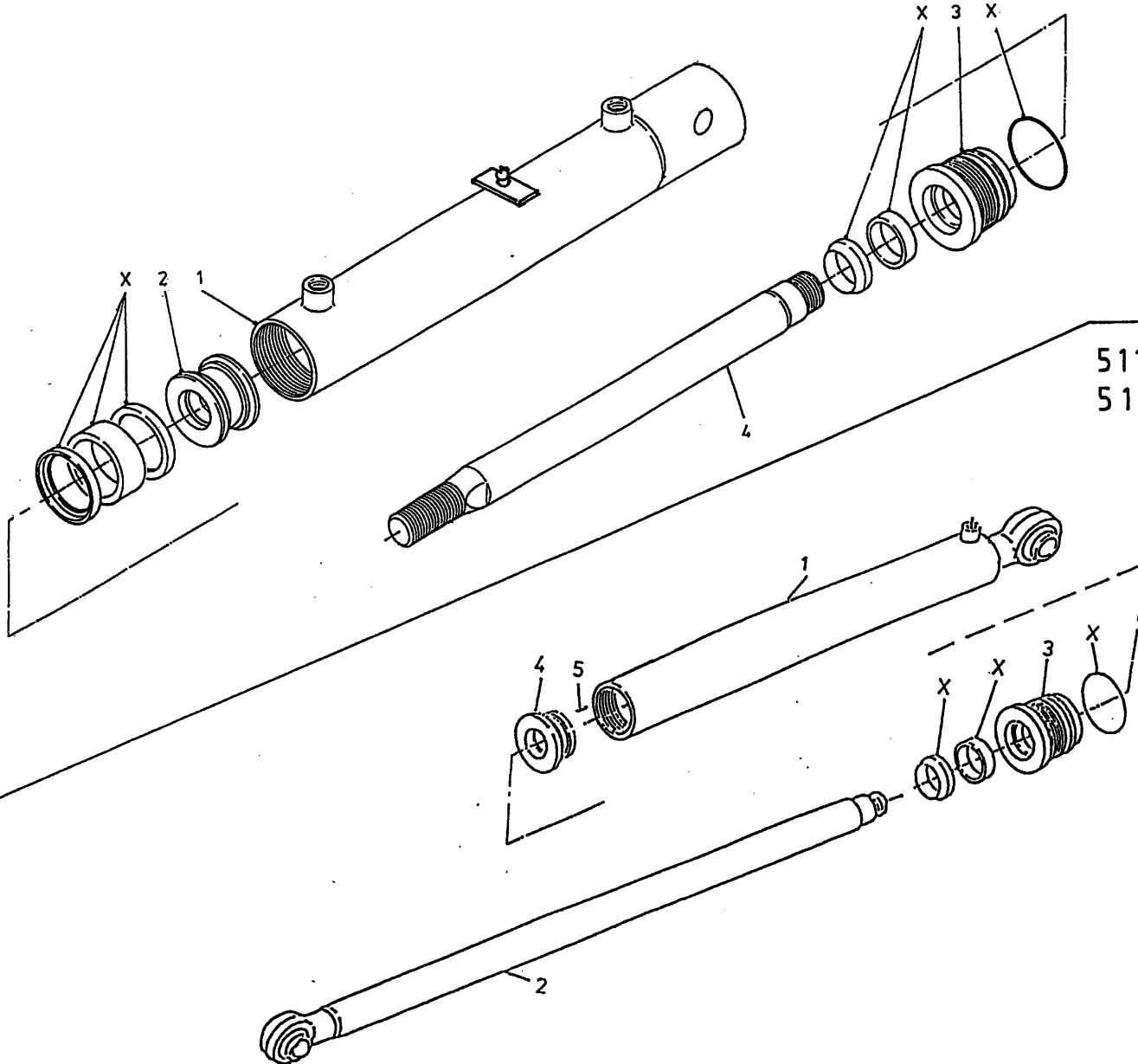
51177 9m³

1	12565	1	Ø 102
2	32057	1	
3	86140	1	M40 x 2
4	11671	1	
5	32034	1	
6	30010	1	
7	84119	1	M6 x 10
X	05422	1	

92162/3

Afbeelding 12 : Doseerklap cilinder - 51154 / Wielarmcilinder - 51152 - 51193
 Abbildung 12 : Dosierklappe-zylinder - 51154 / Radarmzylinder - 51152 - 51193
 Picture 12 : Unloading Door Cylinder - 51154 / Wheelaxle Cylinder - 51152 - 51193

51154



51152
51193

bestelnummer
ordernummer
Num. à commander
Bestellnummer

51154

1	12349	1	
2	30860	1	
3	31460	1	
4	31764	1	
X	05309	1	

51152 7m³ → 03 9m³ → 01

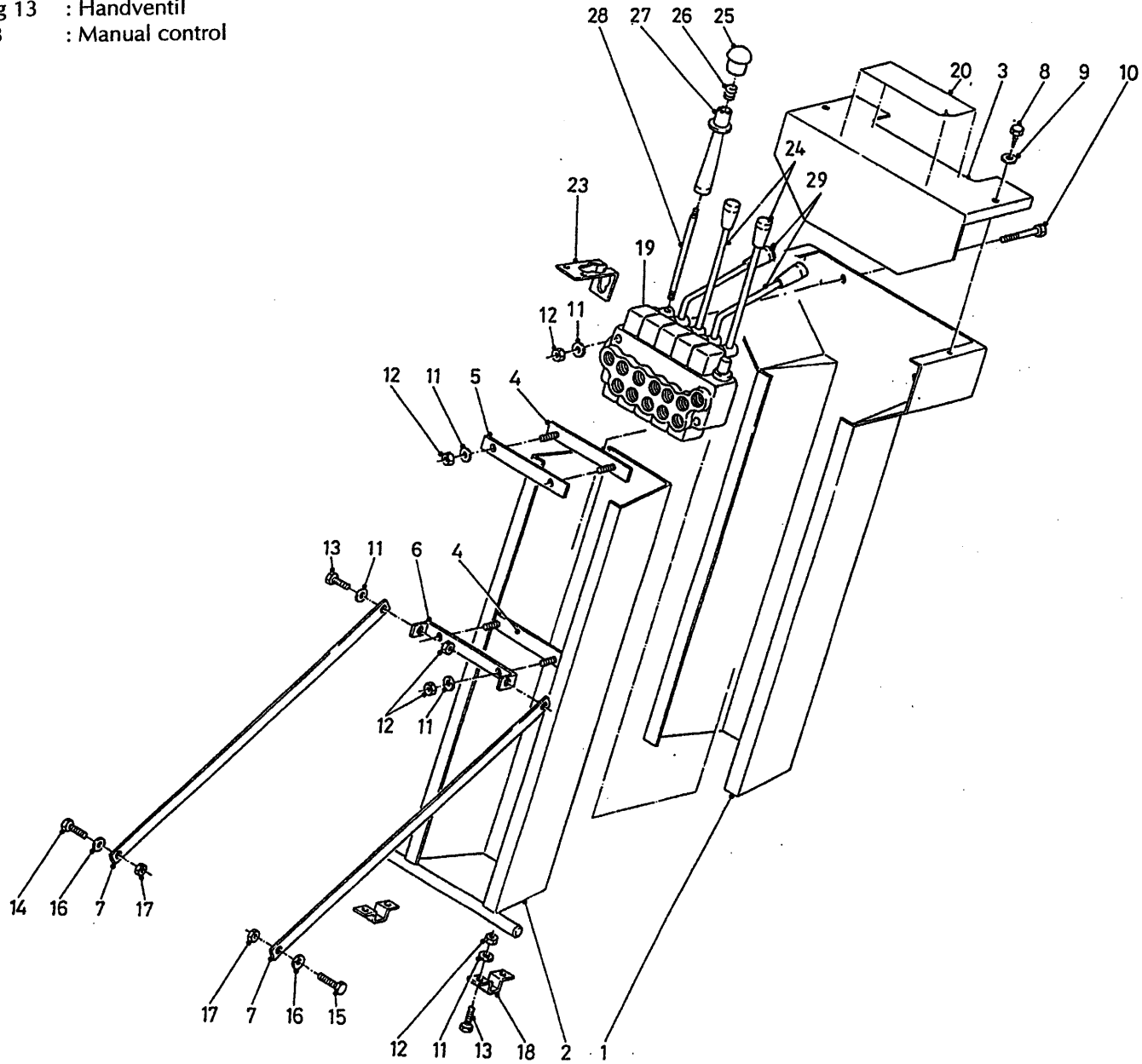
1	12300	1	
2	12299	1	
3	31930	1	
4	31643	1	
5	84119	1	M6x10
X	05401	1	

51193 7m³ → 04 9m³ → 02

1	12782	1	
2	12781	1	
3	31930	1	
4	31643	1	
5	84119	1	M6 X 10
X	05423	1	

92162/3

Afbeelding 13 : Handventielen
 Abbildung 13 : Handventil
 Picture 13 : Manual control

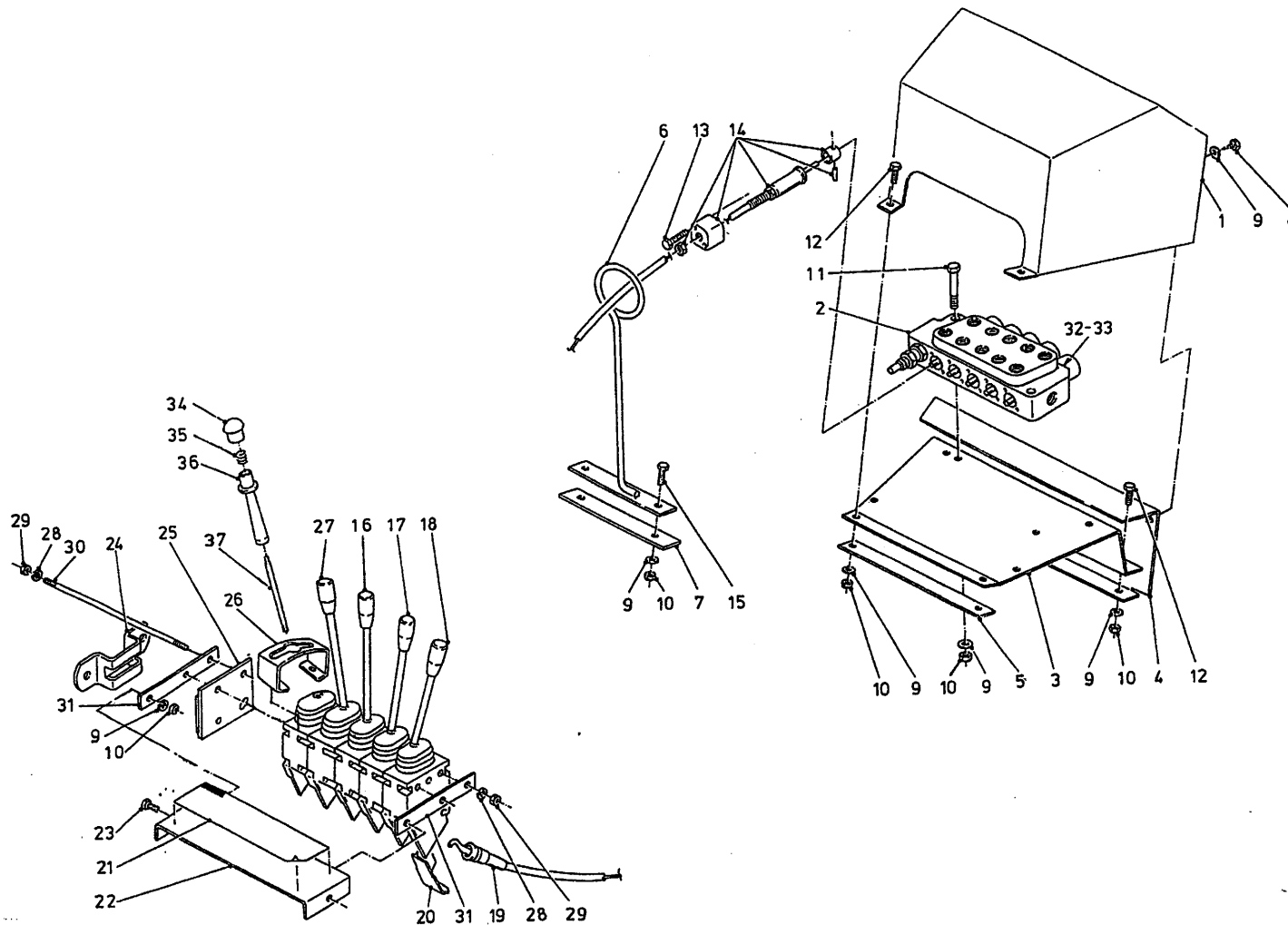


bestelnummer
 ordernummer
 Num. à commander
 Bestellnummer

1	12373	1	
2	12372	1	
3	40530	1	
4	12023	1	
5	25555	1	
6	25553	1	
7	26793	2	
8	84705	2	6,3 x 13
9	85106	2	M6
10	84401	2	M8 x 40
11	85108	12	M8
12	86208	12	M8
13	80831	4	M8 x 30
14	81236	1	M12 x 35
15	81256	1	M12 x 55
16	85112	2	M12
17	86212	2	M12
18	25514	2	
19	53416	1	
20	91300	1	
21A	78128	1	17,86 x 2.62/70
21B	78126	10	15,08 x 2.62/70
22A	53430	4	
22B	53434	1	
23	27831	1	
24	53473	2	
25	60396	1	
26	65090	1	
27	60375	1	
28	53475	1	
29	53474	2	

92162/3

Afbeelding 14 : Mechanische bediening
 Abbildung 14 : Mechanische Fernbedienung
 Picture 14 : Mecanical remote control



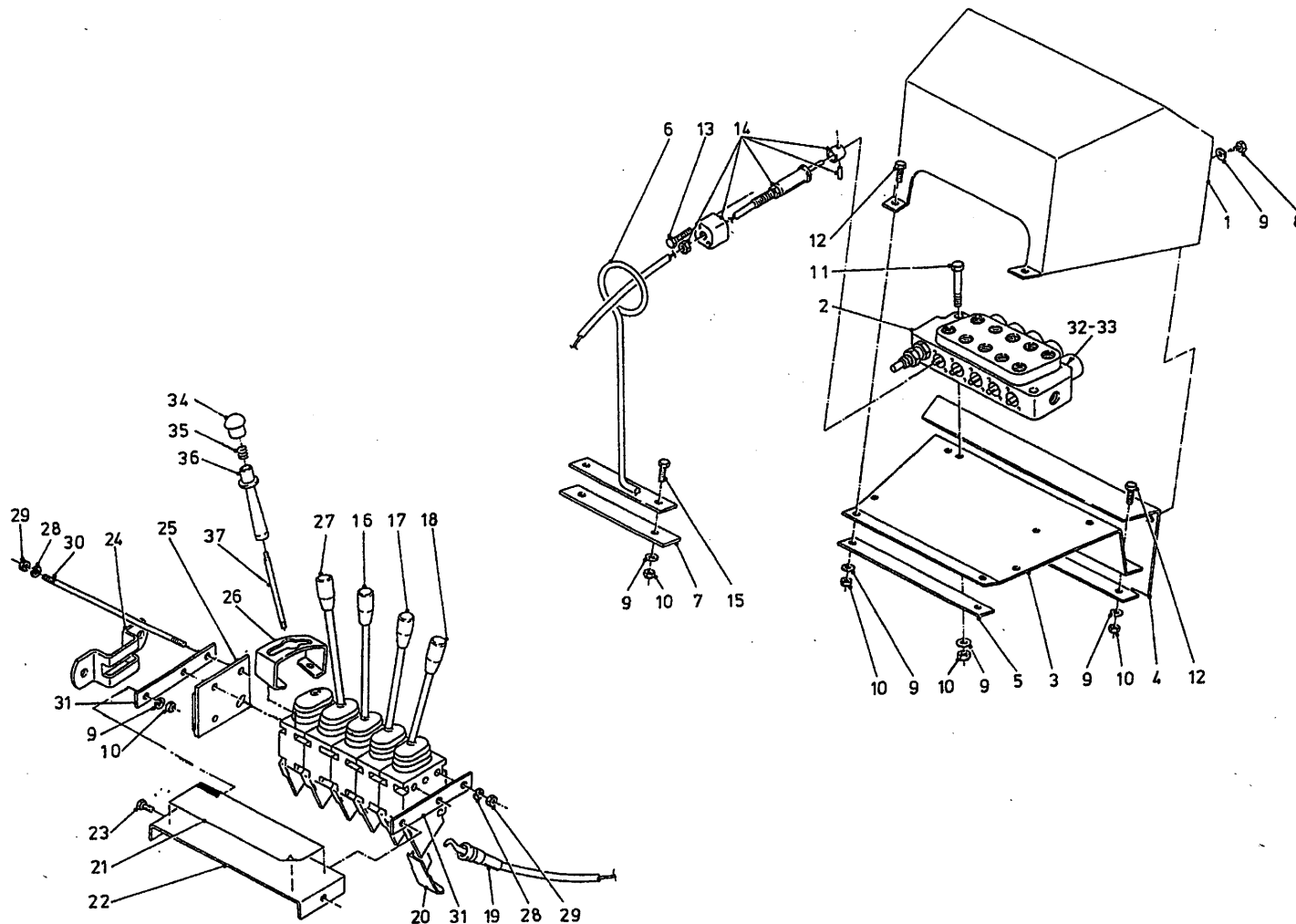
bestelnummer		ordernummer	
Num. à commander		Bestellnummer	
1	12430	1	
2	53416	1	
3	26702	1	
4	26898	1	
5	26701	1	
6	12431	1	
7	26900	1	
8	84713	2	M8 x 16
9	85108	5	M8
10	86208	5	M8
11	84401	2	M8 x 40
12	80826	4	M8 x 25
13	84480	10	M6 x 45
14	53231	5	
15	80840	2	M8 x 40
16	53099	1	
17	53127	1	15° R
18	53128	1	30° R
19	79059	5	L= 2600
20	60120	5	
21	91300	1	
22	22245	1	
23	80816	2	M8 x 16
24	20199	1	
25	11139	1	
26	28982	1	
27	53129	1	15° L
28	85106	6	M6
29	86206	6	M6
30	84045	3	M6 x 240
31	22244	2	
32A	78126	10	15,08 x 2,62/70
32B	78128	1	17.86 x 2.62/70
33A	53430	4	
33B	53434	1	

92162/3

Afbeelding 14 : Mechanische bediening
 Abbildung 14 : Mechanische Fernbedienung
 Picture 14 : Mecanical remote control

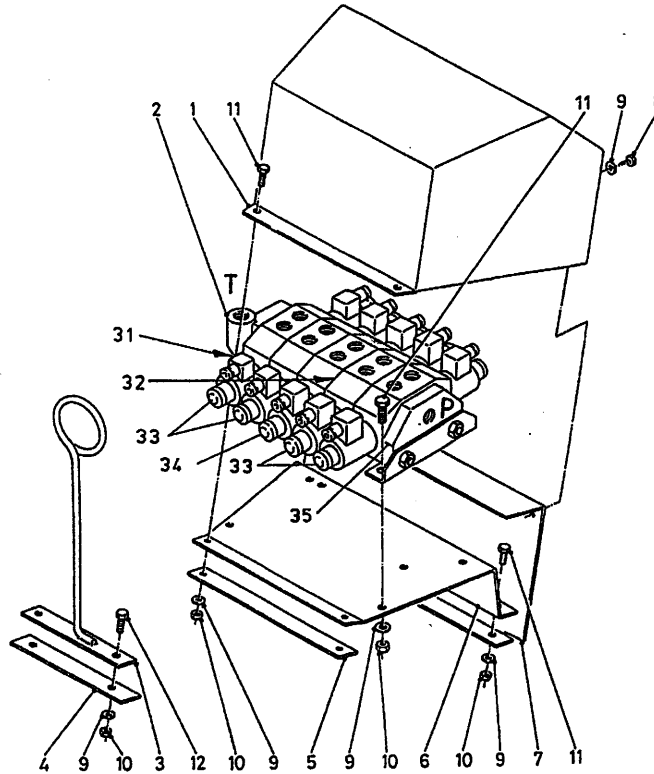
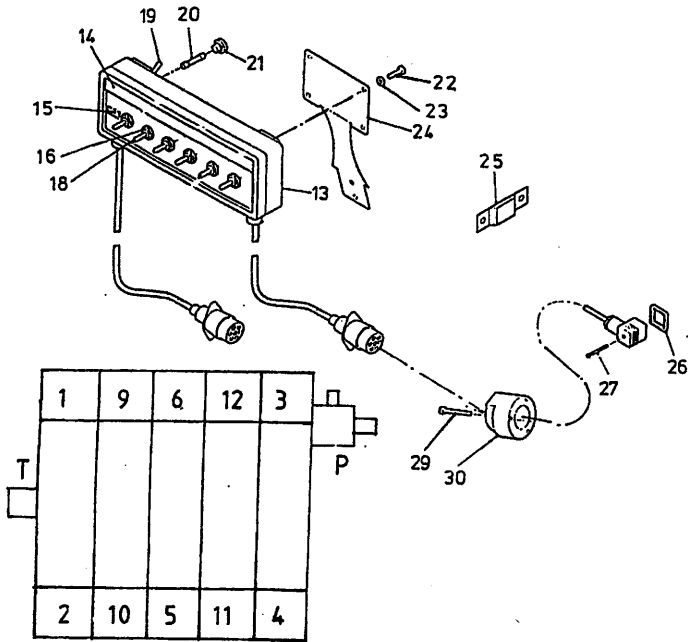
bestelnummer
 ordernummer
 Num. à commander
 Bestellnummer

34	60396	1
35	65090	1
36	60375	1
37	53475	1



92162/3

Afbeelding 15 : Electrische bediening
 Abbildung 15 : Elektrische Fernbedienung
 Picture 15 : Electrical remote control



bestelnummer
 ordernummer
 Num. à commander
 Bestellnummer

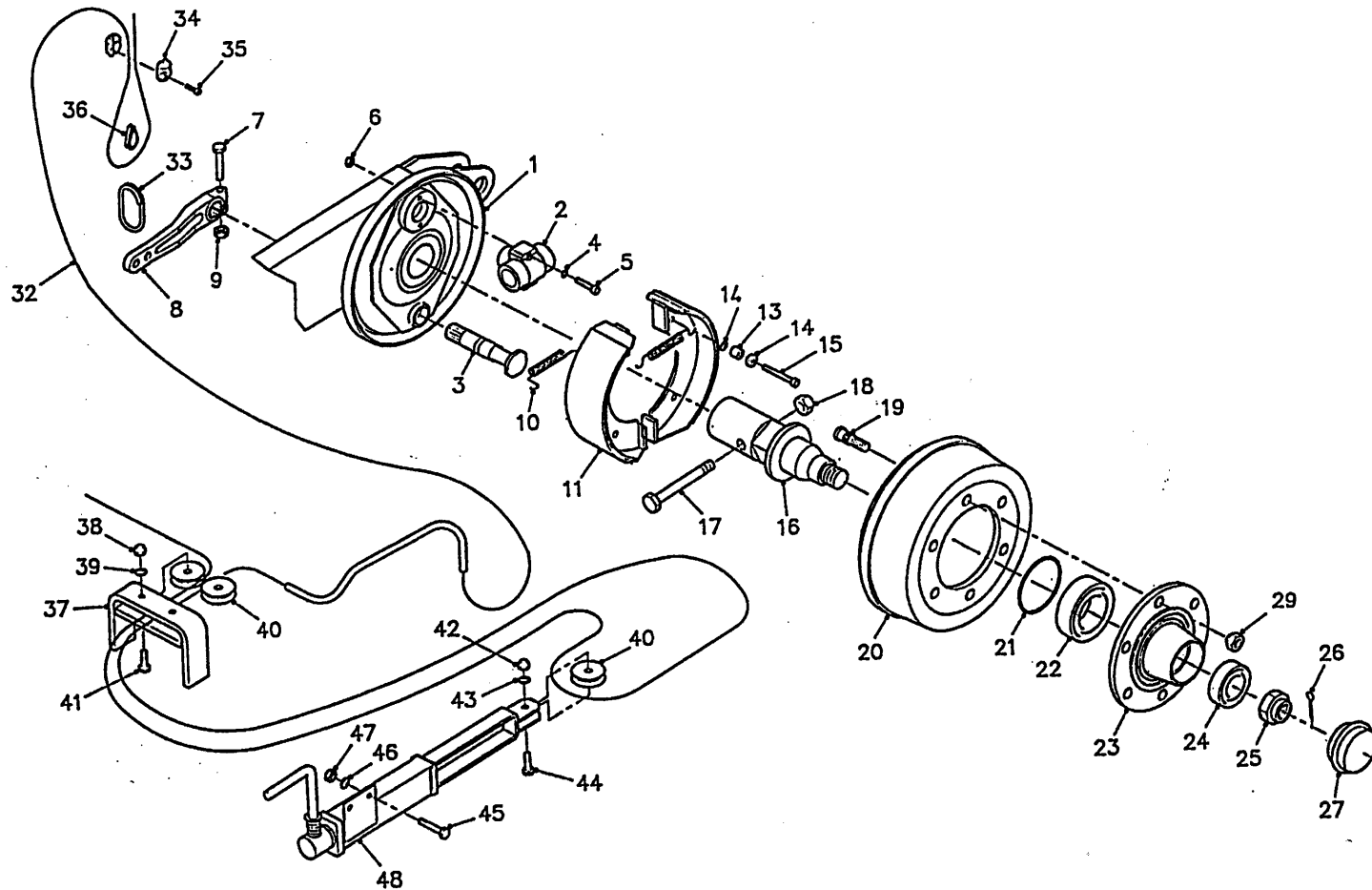
1	12429	1	
2	53431	1	
3	12431	1	
4	26900	1	
5	26701	1	
6	26702	1	
7	26705	1	
8	84713	2	M8 x 16
9	85108	12	M8
10	86208	10	M8
11	80826	4	M8 x 25
12	80840	2	M8 x 40
13	98197	1	kompl.
14	91015	1	
15	98051	1	
16	98113	6	
18	98056	6	
19	98054	1	
20	98053	1	
21	98052	1	
22	80610	4	M6 x 10
23	85106	4	M6
24	40420	1	
25	24644	1	
26	60180	12	
27	84711	12	M3 x 35
29	84476	2	M5 x 35
30	98147	1	
31	78062	10	18,77 x 1.78/70
32	05247	6	
33	53280	4	
34	53279	1	
35	53440	1	

92162/3

Afbeelding 16 : Hydraulisch remsysteem

Abbildung 16 : Hydraulischer Bremse

Picture 16 : Hydraulic System



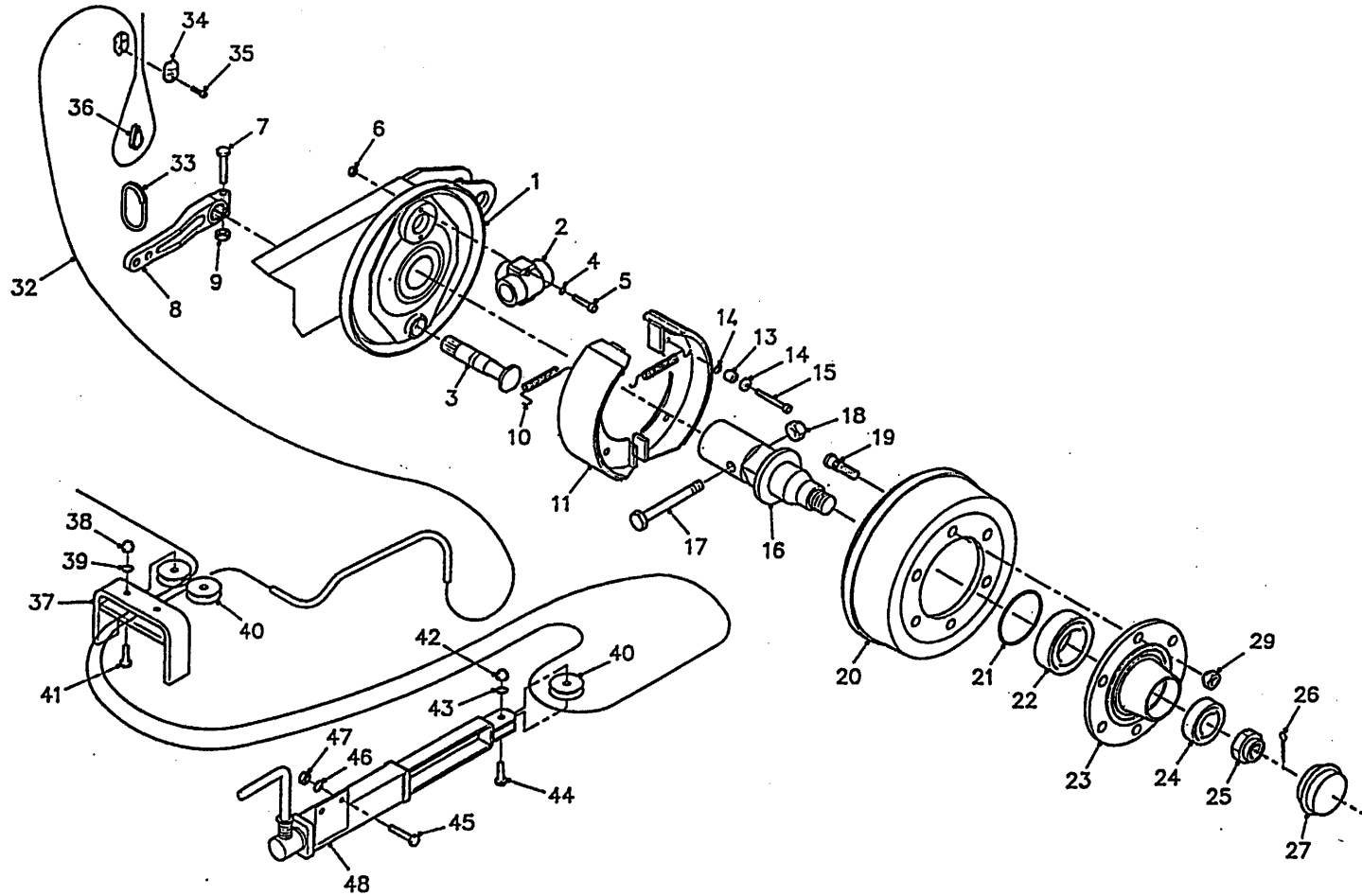
bestelnummer	ordernummer	Num. à commander	Bestellnummer
1	11751	1	
2	51079	1	
3	31631	2	
4	85009	2	
5	84419	4	M8 x 45
6	86108	4	M8
7	81055	4	M10 x 55
8	31982	2	
9	86210	2	M10
10	65067	4	
11	11753	4	
13	65068	4	
14	31599	8	
15	84475	4	M6 x 80
16	31954	2	
17	81615	2	M16 x 140
18	86516	2	M16
19	84935	12	M18 x 1.5 L=63
20	31583	2	
21	90399	2	
22	70057	2	30211
23	90308	2	
24	70056	2	30208
25	90223	2	
26	90224	2	Ø 6,3 x 56
27	90225	2	
29	86922	12	M18 x 1.5
32	79082	2	L= 3170
33	39139	2	
34	90430	2	
35	84462	2	M6 x 25
36	90429	1	
37	11770	1	
38	86210	2	M10
39	85110	2	M10
40	31589	3	
41	81055	2	M10 x 55
42	86210	1	M10

92162/3

Afbeelding 16 : Hydraulisch remsysteem

Abbildung 16 : Hydraulischer Bremse

Picture 16 : Hydraulic Brake



bestelnummer
ordernummer
Num. à commander
Bestellnummer

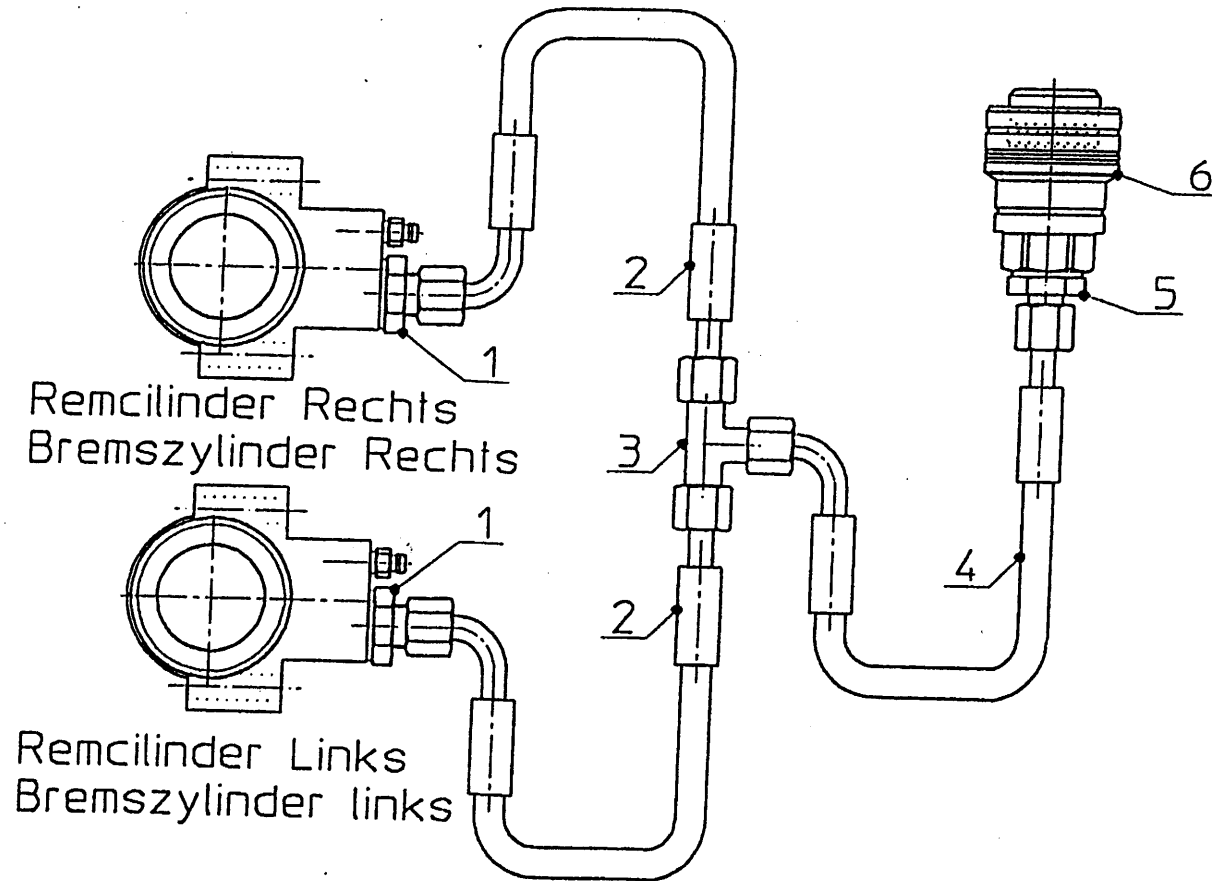
43	85110	1	M10
44	81040	1	M10 x 40
45	81031	2	M10 x 30
46	85110	2	M10
47	86210	2	M10
48	11768	1	

92162/3

Afbeelding 17 : Slangen hydraulisch remsysteem

Abbildung 17 : Schlauche hydraulische Bremse

Picture 17 : Hoses hydraulic brake system



bestelnummer
ordernummer
Num. à commander
Bestellnummer

1	X50202	2	
2A	W50700	1	¼" L=1800RH
2B	W50637	1	¼" L=1400RH
3	X50353	1	
4	W50956	1	¼" 4200 RH
5	X50114	1	
6	53327	1	

92162/3

Afbeelding 18 : Pneumatisch Remsysteem

Abbildung 18 : Druckluft Bremse

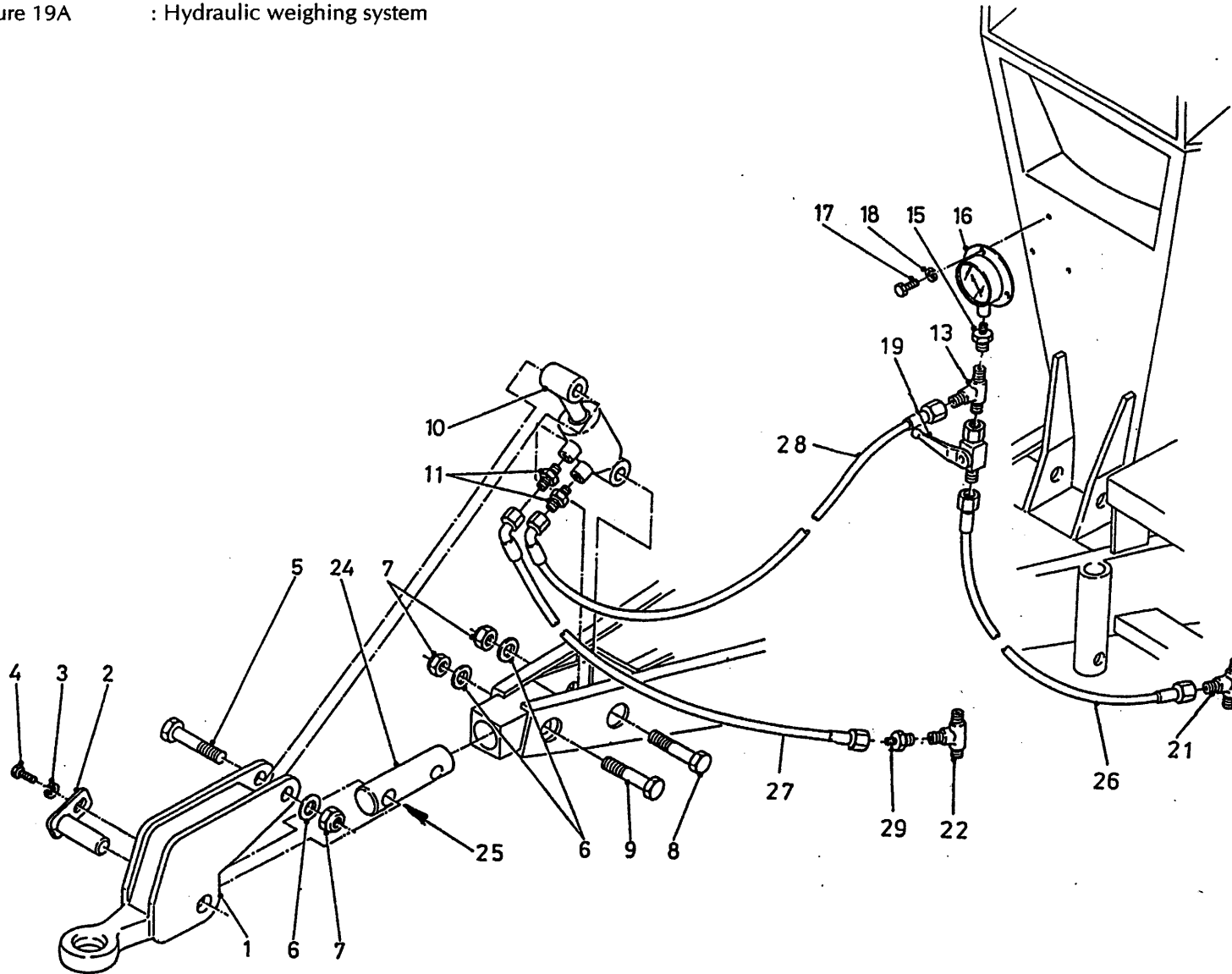
Picture 18 : Air Brake System

bestelnummer
ordernummer
Num. à commander
Bestellnummer

--	--	--	--

92162/3

Afbeelding 19A : Hydraulische weeginstallatie
 Abbildung 19A : Hydraulischer Wiegeeinrichtung
 Picture 19A : Hydraulic weighing system

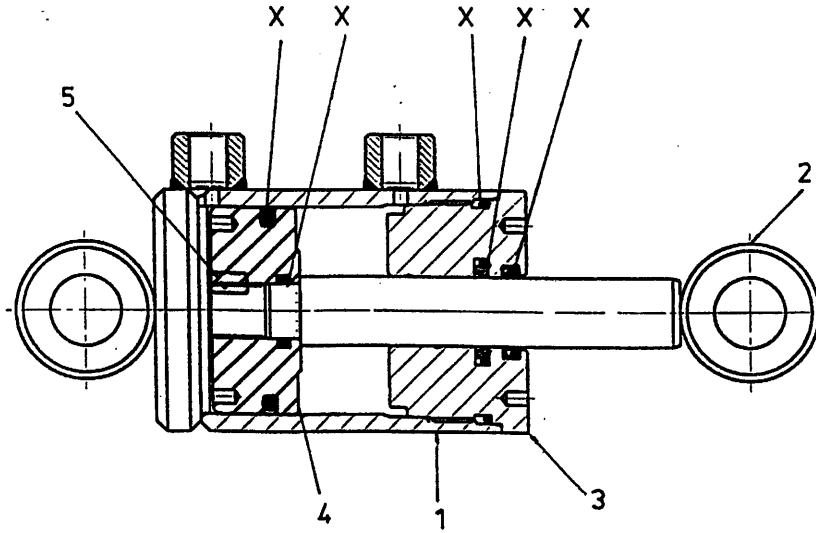


bestelnummer
 ordernummer
 Num. à commander
 Bestellnummer

1	12417	1	
2	12418	1	
3	85010	1	M10
4	81021	1	M10
5	82010	1	M20 x 100
6	85020	2	M20
7	86220	3	M20
8	82013	1	M20 x 120
9	82014	1	M20 x 140
10A	51155	1	→ 02
10B	51195	1	↳ 03
11	X50104	2	
13	X50300	1	
15	X50415	1	
16	53428	1	
17	84705	3	6,3 x 13
18	85106	3	M6
19	51027	1	
21	X50300	1	
22	X50309	1	
24	31958	1	
25	51747	2	
26	W50719	1	¼"3000 RH
27	W50652	1	¼"1700 RH
28	W50700	1	¼"1800 RH
29	X50157	1	

92162/3 : Weegcilinder
 Afbeelding 19B : Wiegezyylinder
 Abbildung 19B : Wiegezyylinder
 Picture 19B : Weighing cylinder

51155



bestelnummer
 ordernummer
 Num. à commander
 Bestellnummer

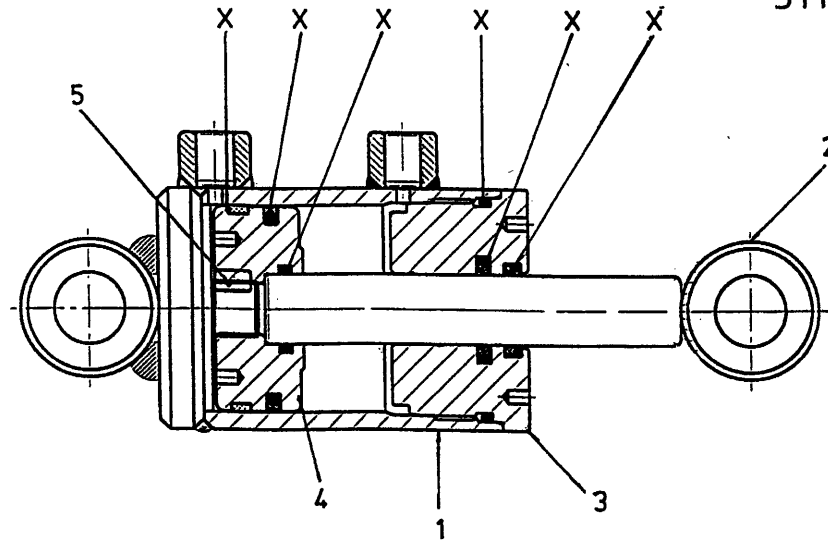
51155 → 02

1	12415	1	M6 x 10
2	12416	1	
3	31949	1	
4	31951	1	
5	84119	1	
X	05400	1	

51195 → 03

1	12415	1	M6 x 10
2	12793	1	
3	31949	1	
4	32182	1	
5	84119	1	
X	05455	1	

51195

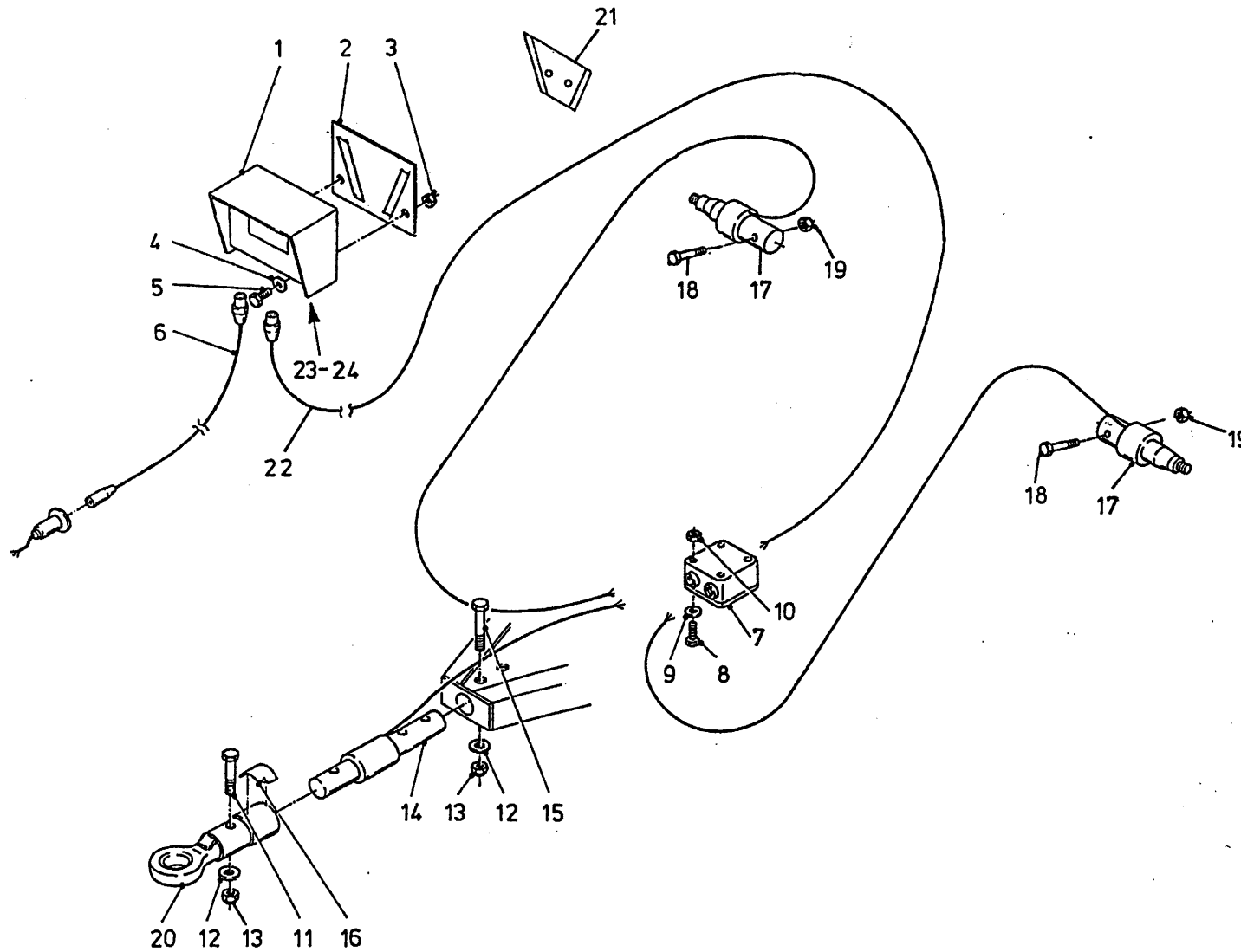


92162/3

Afbeelding 20 : Electronische Weeginstallatie

Abbildung 20 : Elektronische Waage

Picture 20 : Electronic Weighting System

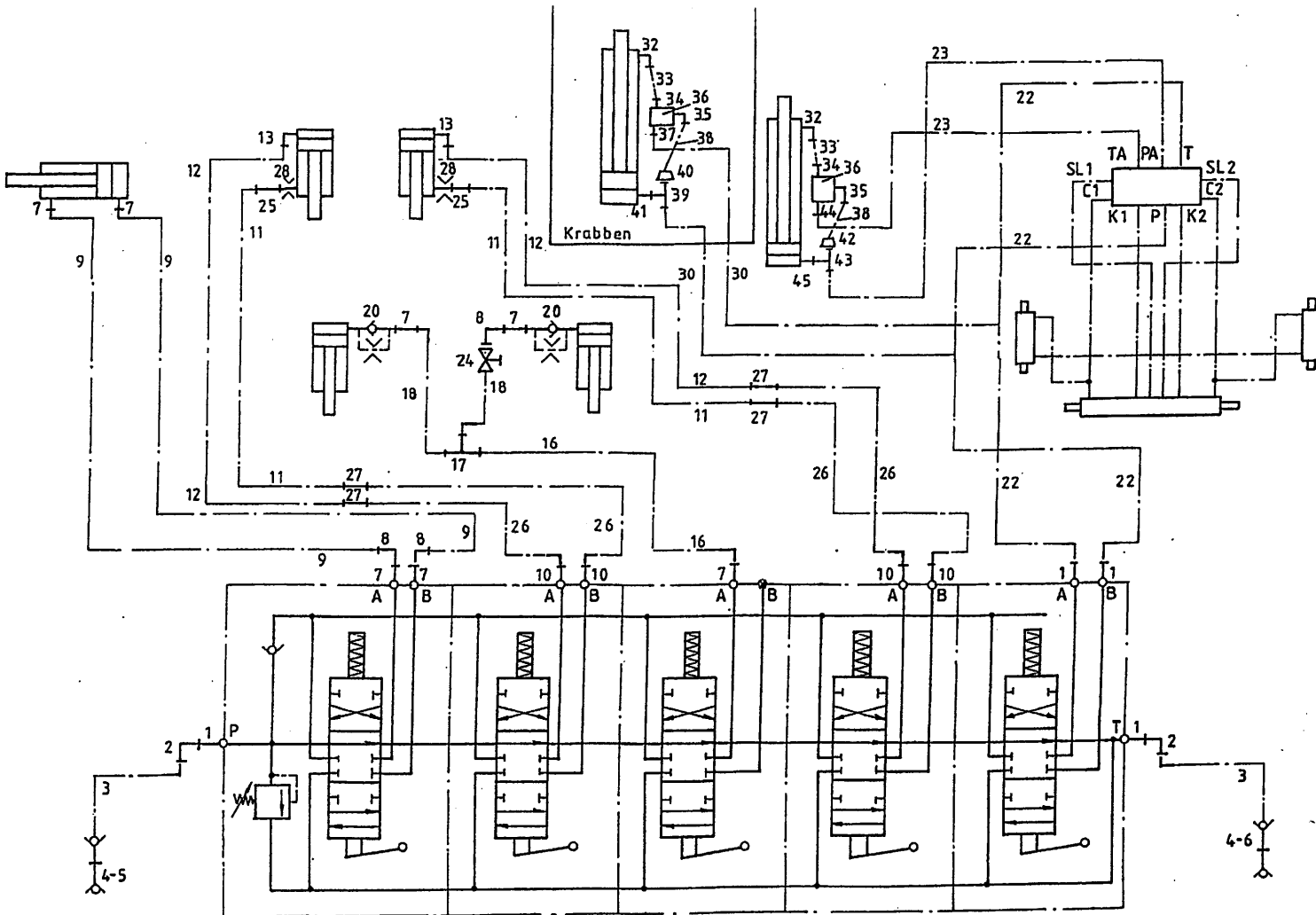


bestelnummer
 ordernummer
 Num. à commander
 Bestellnummer

1A	90481	1	F150
1B	90744	1	F150 View
1C	94007	1	EZ 2000
1D	90977	1	EZ 2000 View
2	40503	1	
3	86506	2	M6
4	85106	2	M6
5	80621	2	M6 x 20
6	90483	1	
7	90482	1	
8	84445	4	M5 x 20
9	85105	4	M5
10	86505	4	M5
11	82013	1	M20 x 130
13	86220	2	M20
14	90447	1	
15	82014	1	M20 x 140
16	91216	1	
17	90714	2	
18	81615	2	M16 x 140
19	86516	2	M16
20	11943	1	
21	40504	1	
22	90719	1	
23	05389	1	
24	05390	1	

92162/3

Afbeelding 21 : Slangenschema handbediening
 Abbildung 21 : Schaltplan Handbedienung
 Picture 21 : Hose-scheme manual control



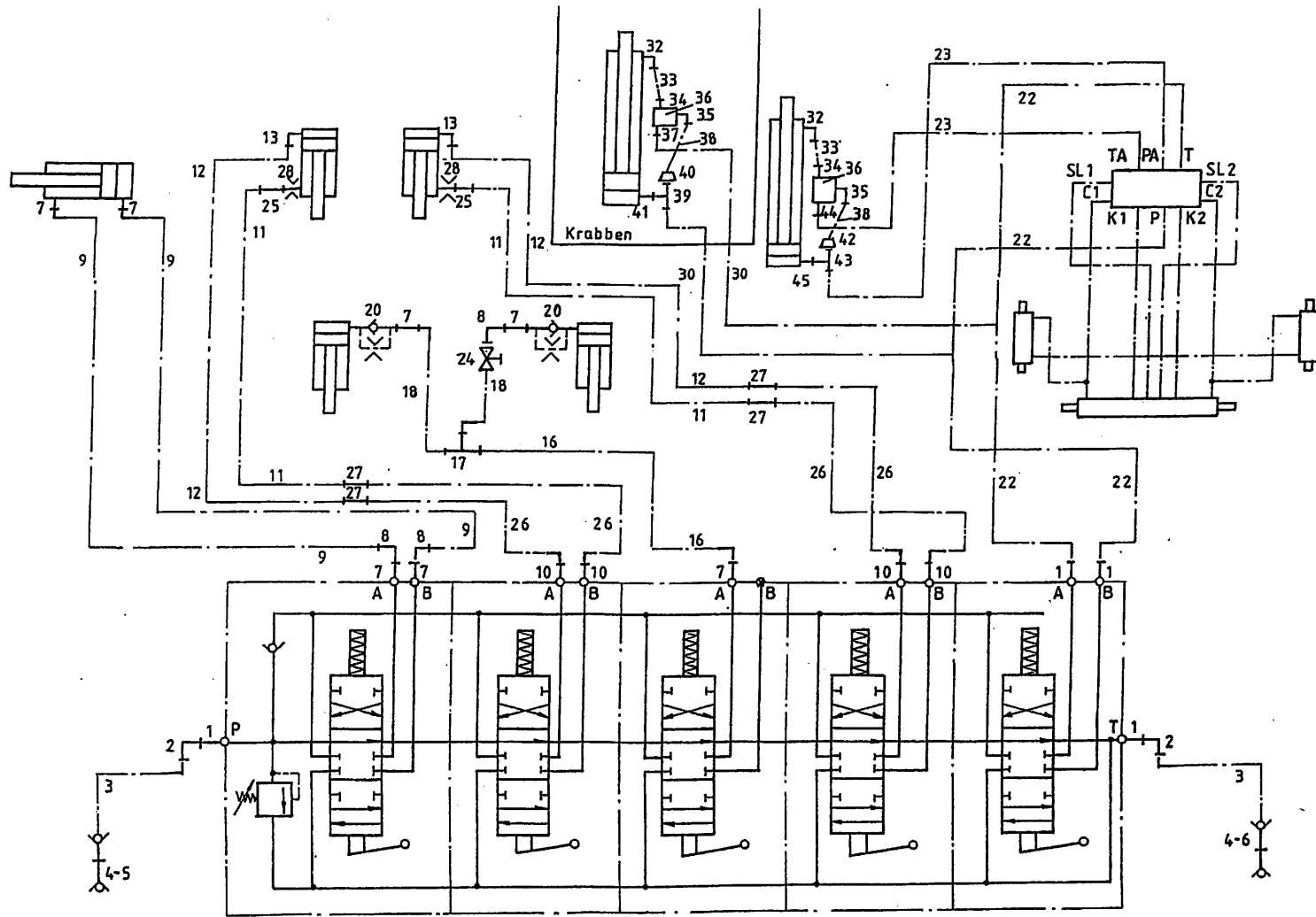
bestelnummer
 ordernummer
 Num. à commander
 Bestellnummer

1	X50102	4	
2	X50143	4	
3	W52793	2	½" 2100 RH
4	53301	2	
5	53303	1	Rood
6	53326	1	Blauw
7	X50113	9	
8	X50122	4	
9	W52631	2	¾" 5400 RH
10	X50114	4	
11A	W52633	2	¼" 8000 RR → I 01
11B	W52645	2	¼" 5250 RR I → 02
12A	W52632	2	¼" 7250 RR → I 01
12B	W52646	2	¼" 6000 RR I → 02
13	X50107	2	
16	W50622	1	¾" 4500 RH
17	X50355	1	
18	W52637	2	¾" 2500 RH
20	53202	2	Ø 1mm
22A	W52639	2	½" 6200 RR → I 01
22B	W52648	2	½" 6750 RH I → 02
23A	W50873	2	¾" 6000 RR → I 01
23B	W52647	2	¾" 6600 RH I → 02
24	51045	2	
25	X50104	2	
26	W50637	4	¼" 1400 RH
27	X50135	4	
28	30726	2	Ø 0,8 mm
30	W50601	2	½" 1800 RH
32	X50101	1	
33A	52653	1	7m³ L=255
33B	52652	1	9m³ L=355
34	50116	1	
35	X50201	1	

92162/3

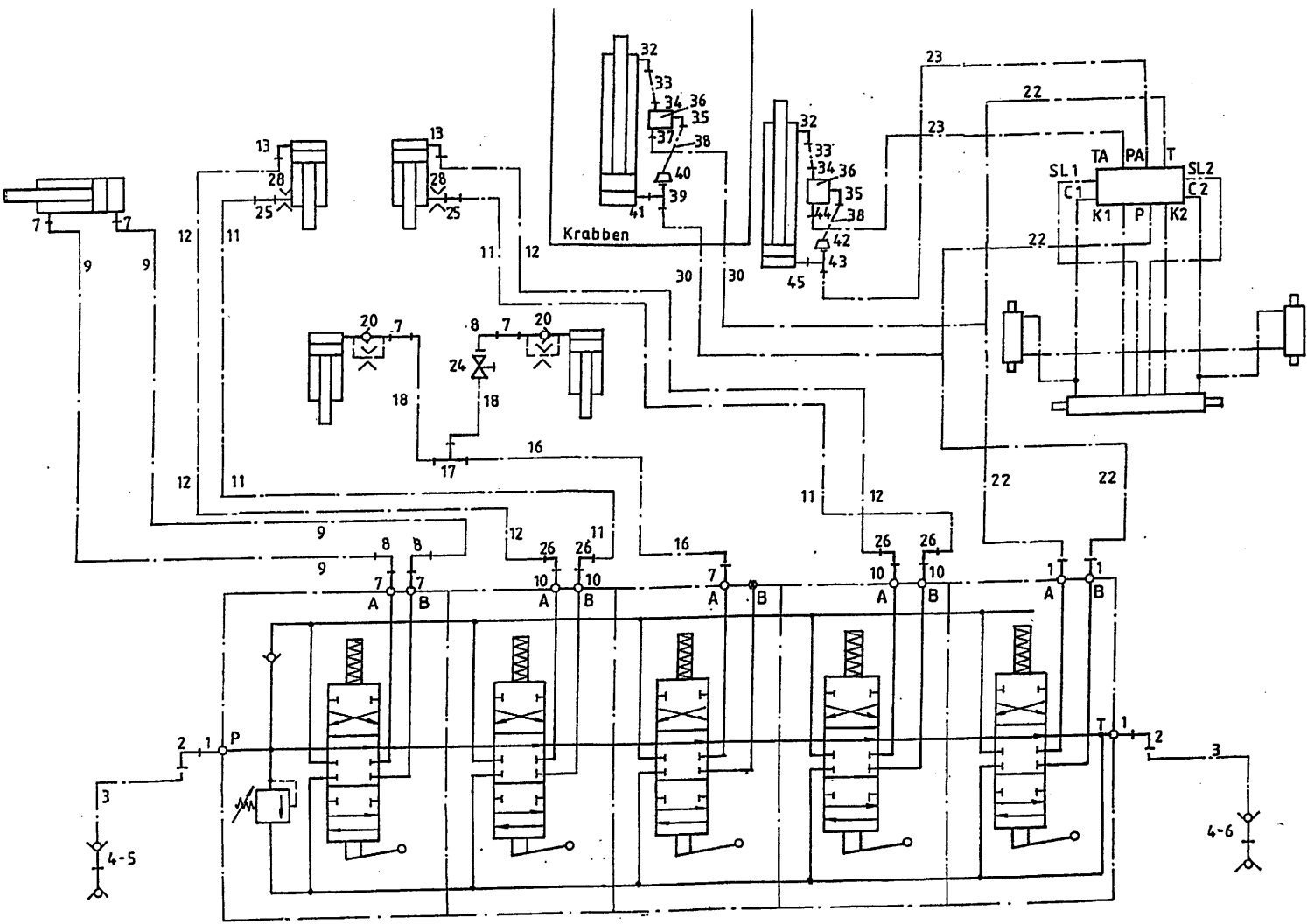
Afbeelding 21 : Slangenschema handbediening
 Abbildung 21 : Schaltplan Handbedienung
 Picture 21 : Hose-scheme manual control

bestelnummer
 ordernummer
 Num. à commander
 Bestellnummer



36	53459	1	
37	50116	1	
38	W50803	1	¼" 400 RH
39	X50362	1	
40	50304	1	
41	X50102	1	
42	X50157	1	
43	X50359	1	
44	50112	1	
45	X50113	1	

92162/3
 Afbeelding 22 : Slangenschema mechanische afstandsbediening
 Abbildung 22 : Schaltplan Mechanische Fernbedienung
 Picture 22 : Hose-scheme mechanical remote control

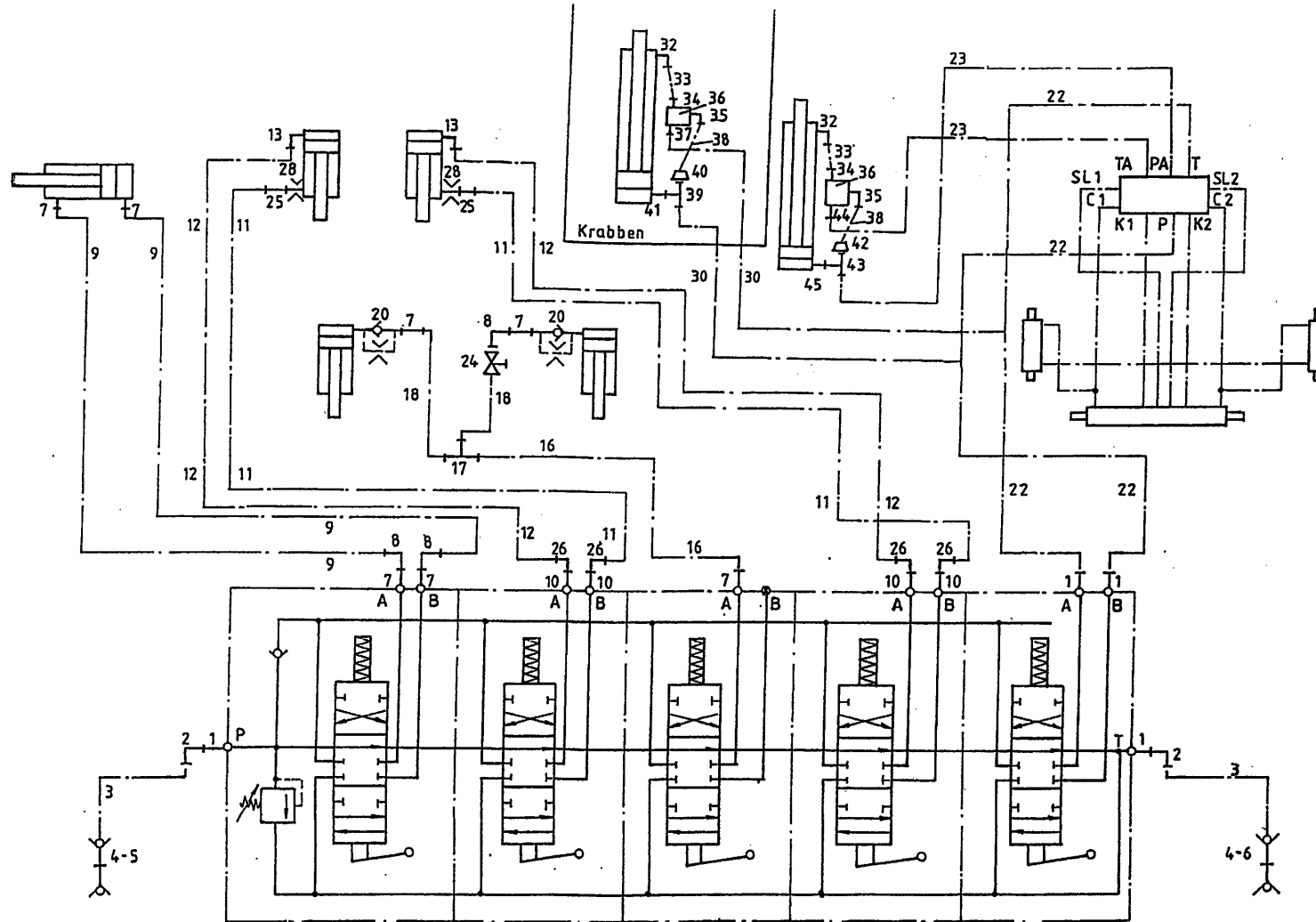


bestelnummer
 ordernummer
 Num. à commander
 Bestellnummer

1	X50102	4	
2	X50143	2	
3	W52793	2	½" 2100 RH
4	53301	2	
5	53303	1	Rood
6	53326	1	Blauw
7	X50113	9	
8	X50122	4	
9	W52631	2	¼" 4800 RH
10	X50114	4	
11A	W52633	2	¼" 8000 RR → I01
11B	W52645	2	¼" 5250 RR I → 02
12A	W52632	2	¼" 7250 RR → I01
12B	W52646	2	¼" 6000 RR I → 02
13	X50107	2	
16	W50655	1	⅜" 3000 RH
17	X50355	1	
18	W52637	2	⅜" 2500 RH
20	53202	2	Ø 1mm
22A	W52639	2	½" 6000 RH → I01
22B	W52648	2	½" 6750 RH I → 02
23A	W50873	2	½" 6000 RR → I01
23B	W52647	2	½" 6600 RRI → 02
24	51045	2	
25	X50104	2	
26	X50147	4	
28	30726	2	Ø0,8 mm
30	W50601	2	½" 1800 RH
32	X50101	1	
33A	52653	1	7m³ L = 255
33B	52652	1	9m³ L = 355
34	50116	1	
35	X50201	1	
36	53459	1	

92162/3

Afbeelding 22 : Slangenschema mechanische afstandsbediening
 Abbildung 22 : Schaltplan Mechanische Fernbedienung
 Picture 22 : Hose-scheme mecanical remote control

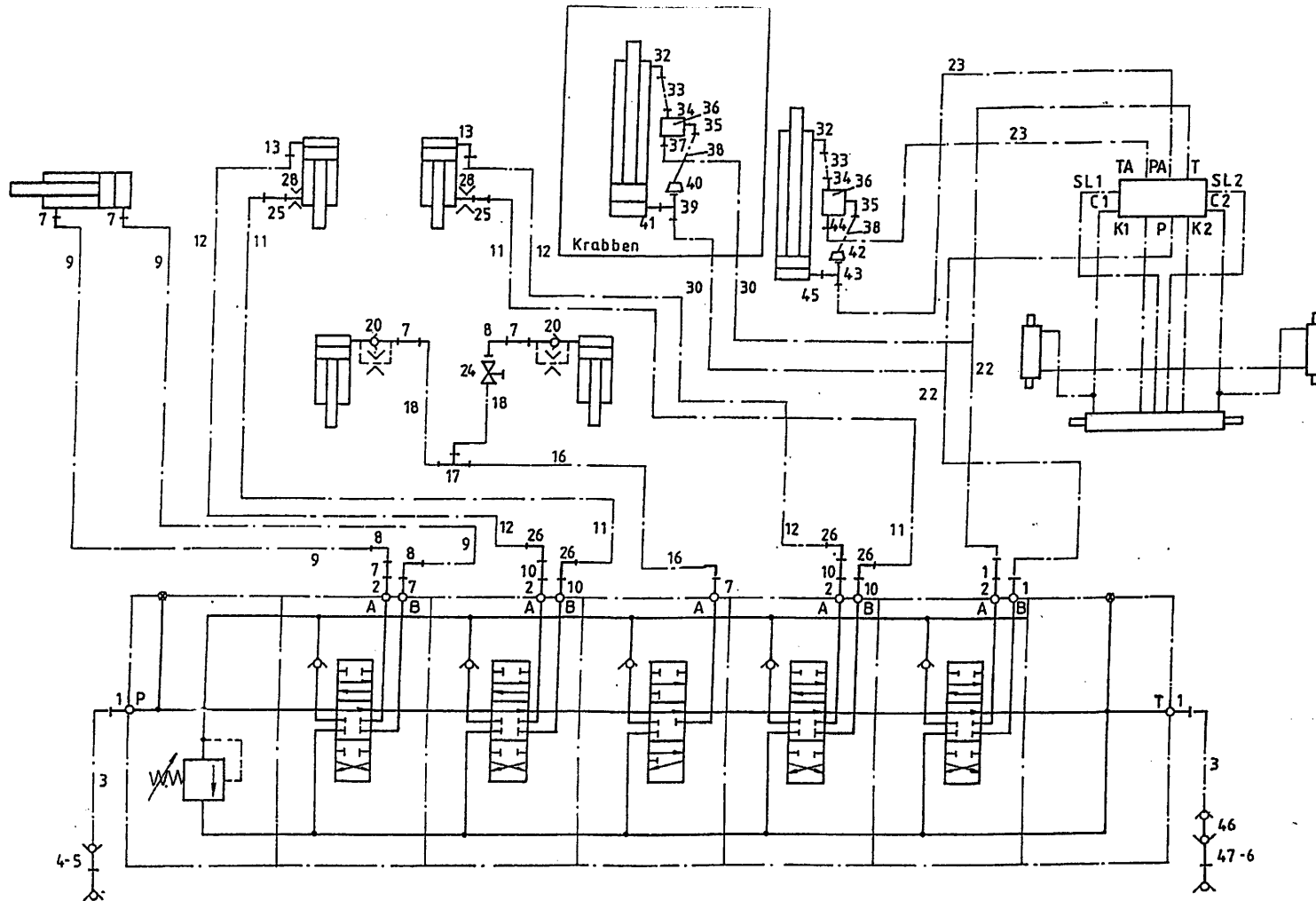


bestelnummer
 ordernummer
 Num. à commander
 Bestellnummer

37	50116	1	
38	W50803	1	¼" 400 RH
39	X50362	1	
40	50304	1	
41	X50102	1	
42	X50157	1	
43	X50359	1	
44	50112	1	
45	X50113	1	

92162/3

Afbeelding 23 : Slangenschema elektrische bediening
 Abbildung 23 : Schaltplan Elektrische Fernbedienung
 Picture 23 : Hose-scheme electrical remote control



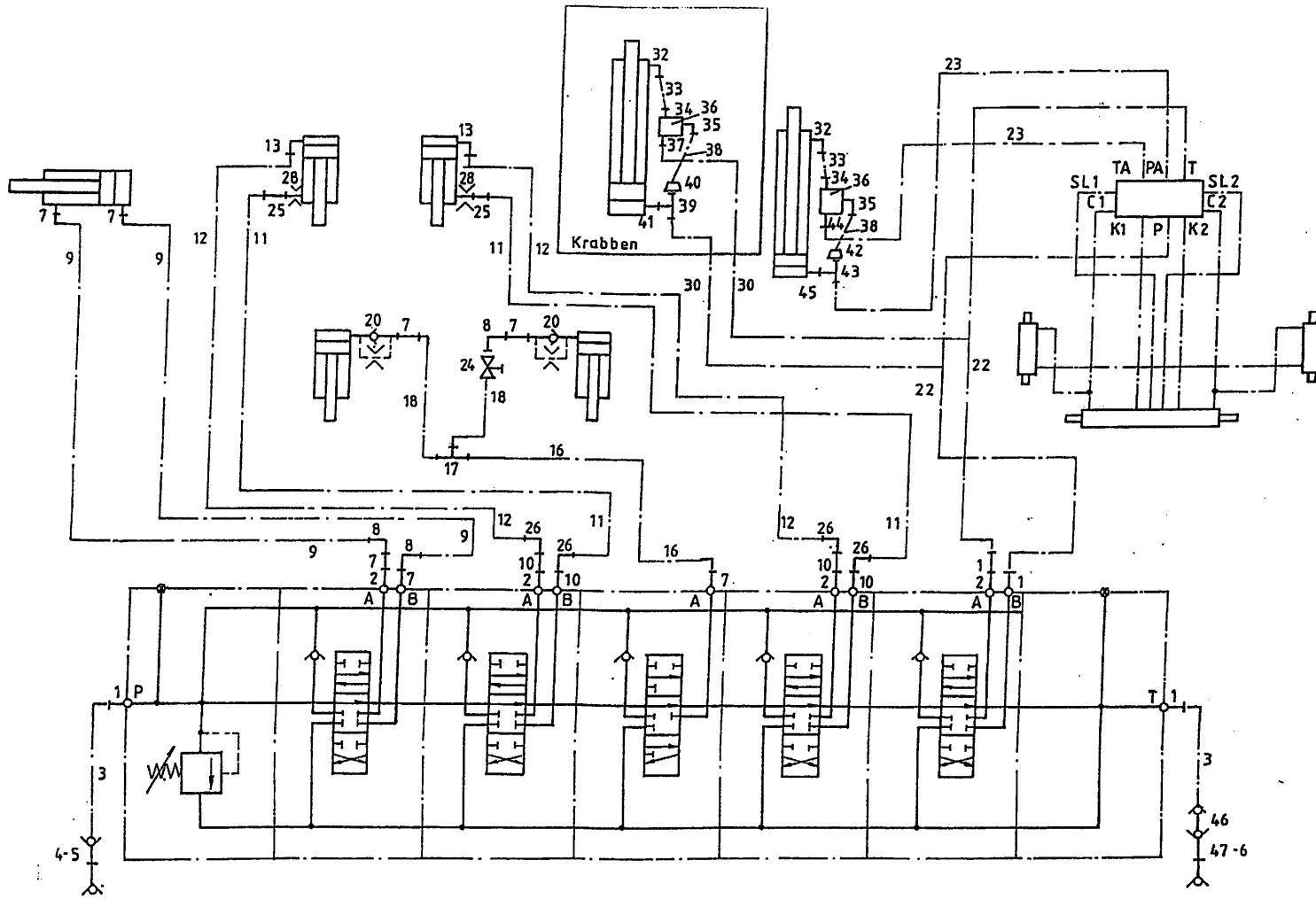
bestelnummer
 ordernummer
 Num. à commander
 Bestellnummer

1	X50102	4	
2	50133	4	
3	W50793	2	½" 2100 RH
4	53301	2	
5	53303	1	Rood
6	53326	1	Blauw
7	X50113	9	
8	X50122	4	
9	W52631	2	¼" 4800 RH
10	X50114	4	
11A	W52633	2	¼" 8000 RR → I 01
11B	W52645	2	¼" 5250 RR I → 02
12A	W52632	2	¼" 7250 RR → I 01
12B	W52646	2	¼" 6000 RR I → 02
13	X50107	2	
16	W50655	1	⅜" 3000 RH
17	X50355	1	
18	W52637	2	⅜" 2500 RH
20	53202	2	Ø 1mm
22A	W52639	2	½" 6000 RH → I 01
22B	W52648	2	½" 6750 RH I → 02
23A	W50873	2	½" 6000 RR → I 01
23B	W52647	2	½" 6600 RR I → 02
24	51045	2	
25	X50104	2	
26	X50147	4	
28	30726	2	Ø 0,8 mm
30	W50601	2	½" 1800 RH
32	X50101	1	
33A	52653	1	7m³ L=255
33B	52652	1	9m³ L=355
34	50116	1	
35	X50201	1	
36	53459	1	

92162/3

Afbeelding 23 : Slangenschema elektrische bediening
 Abbildung 23 : Schaltplan Elektrische Fernbedienung
 Picture 23 : Hose-scheme electrical remote control

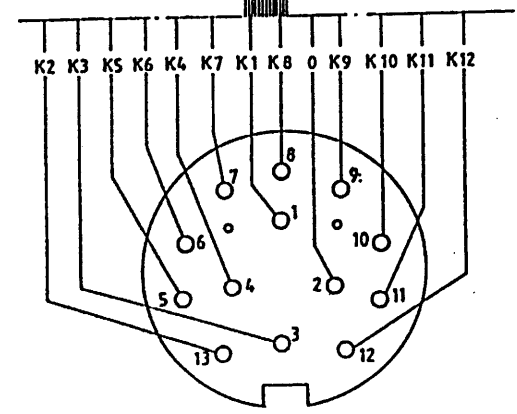
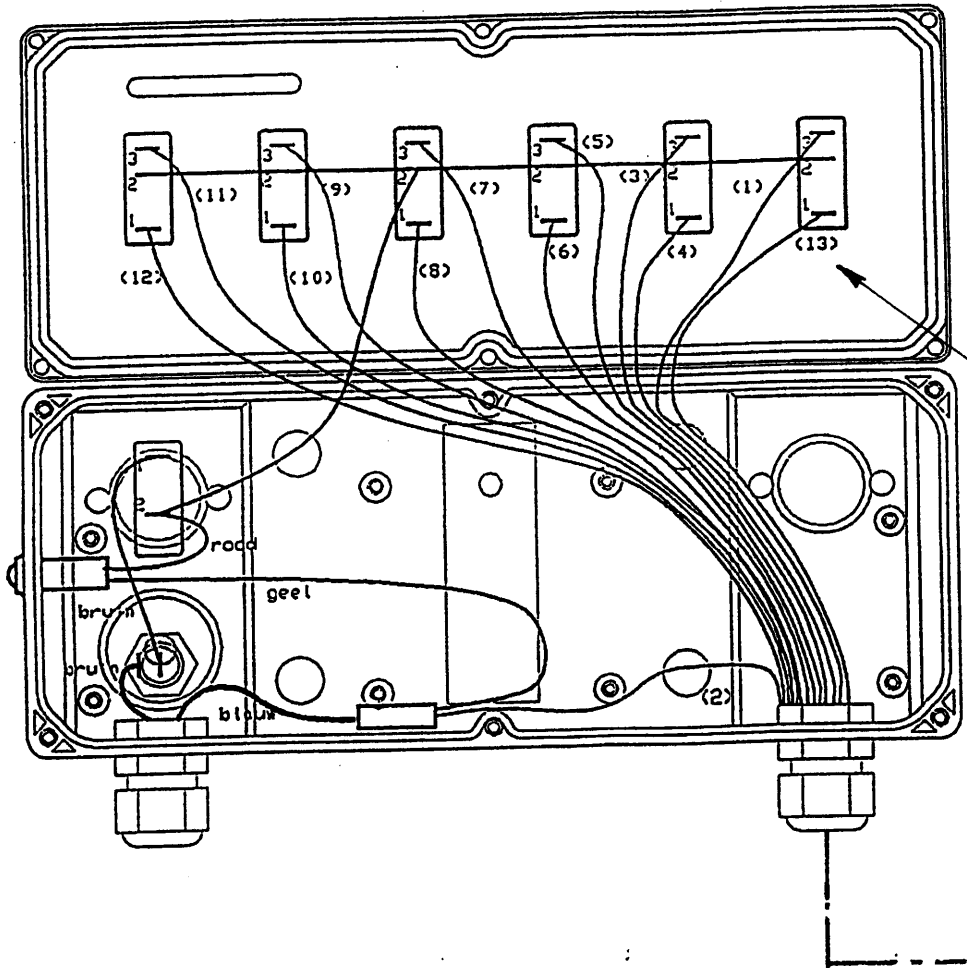
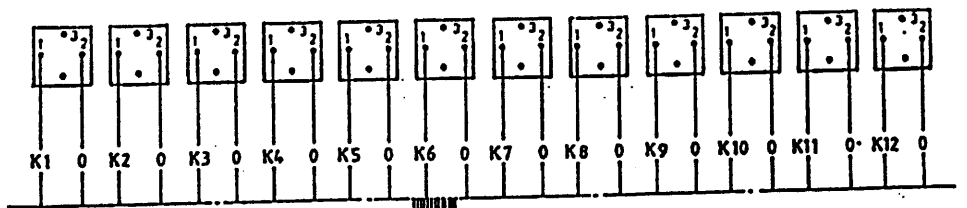
bestelnummer
 ordernummer
 Num. à commander
 Bestellnummer



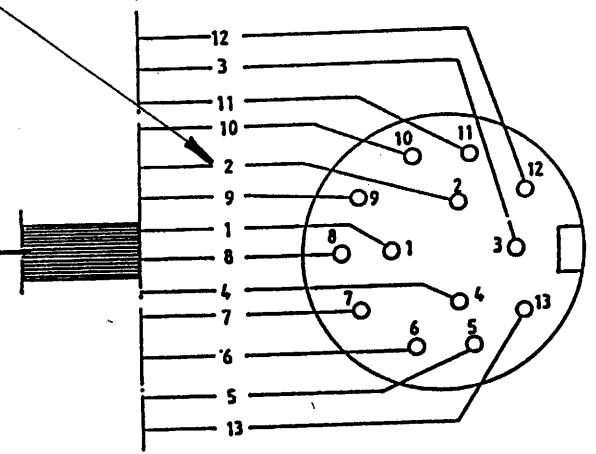
37	50116	1	
38	W50803	1	¼" 400 RH
39	X50362	1	
40	50304	1	
41	X50102	1	
42	X50157	1	
43	X50359	1	
44	50112	1	
45	X50113	1	
46	53273	1	
47	53309	1	

92162/3

- Afbeelding 24 : Elektrische bediengskast + schema
- Abbildung 24 : Elektrische Bedienungskasten + Schaltpläne
- Picture 24 : Electrical control-box + scheme



Stekker aansluiting
Stecker anschluss



The logo for TRIOLIET features a stylized triangle icon to the left of the word "TRIOLIET" in a bold, sans-serif font.

Hinmanweg 19

7575 BE Oldenzaal - Holland

Postbus 134

7570 AC Oldenzaal - Holland

e-mail: info@triolet.nl

<http://www.triolet.nl>

Tel.: 0541 - 57 21 21 / (+) 31 - 541 - 57 21 21

Fax: 0541 - 57 21 25 / (+) 31 - 541 - 57 21 25

Voor onderdelen / Für Ersatzteile / For spare parts:

Tel.: 0541 - 57 21 36 / (+) 31 - 541 - 57 21 36

Fax: 0541 - 57 21 40 / (+) 31 - 541 - 57 21 40