

Trioliet Mullos

Stationaire meng- en doseerbak

Stationäre Misch- und Dosieranlage

Stationary feeder - mixer

Mélangeuse - distributrice stationnaire

Solomix 700 - 2400



Onderdelenlijst/Ersatzteilliste/Spare parts list/Liste de Pièces de Rechange

Bestelnummer/Bestellnummer/Ordernumber/Numéro de commande 92211

Geldig vanaf productieserie nr./Gültig ab/Valid from Prod. Series No.: 01

A Partir du Série de production No.: 01

INHOUDSOPGAVE

1A	Stickers Solomix-1 stationair met doseerschuif en doseeropening
1B	Stickers Solomix-1 stationair met doseerschuif en dwarsband
1C	Stickers Solomix-2 stationair met doseerschuif en doseeropening
1D	Stickers Solomix-2 stationair met doseerschuif en dwarsband
2A	Frame Solomix-1 stationair met doseerschuif en doseeropening
2B	Frame Solomix-1 stationair met doseerschuif en dwarsband
2C	Frame Solomix-2 stationair met doseerschuif en doseeropening
2D	Frame Solomix-2 stationair met doseerschuif en dwarsband
3	Doseerkleppen Solomix stationair
4A	Onderframe Solomix-1 stationair
4B	Onderframe Solomix-2 stationair 1200 - 2400
5	Steunpoten en bevestiging
6A	Mengvijzel Solomix-1 stationair
6B	Mengvijzel Solomix-2 stationair
6C	Vijzelmessen
7A	Elektrische aandrijving
7B	Compact unit
8	Dwarsband
9A	Doseerkepcilinders met vaste cilindersteun
9B	Doseerkepcilinders met losse cilindersteun
10	Mechanische bediening
11A	Elektrische bediening, standaard regeling
11B	Elektrische bediening, proportioneel regeling
12	Slangenschema elektrische bediening, 2.2 kW compact unit
13	Slangenschema mechanische en elektrische bediening, 7.5 / 10 kW compact unit
14	Elektronisch weegsysteem 700 - 2400
15	Aftakas

INHALTVERZEICHNIS

1A	Aufkleber Solomix-1 stationär mit Dosierschieber und Dosieröffnung
1B	Aufkleber Solomix-1 stationär mit Dosierschieber und Querförderband
1C	Aufkleber Solomix-2 stationär mit Dosierschieber und Dosieröffnung
1D	Aufkleber Solomix-2 stationär mit Dosierschieber und Querförderband
2A	Rahmen Solomix-1 stationär mit Dosierschieber und Dosieröffnung
2B	Rahmen Solomix-1 stationär mit Dosierschieber und Querförderband
2C	Rahmen Solomix-2 stationär mit Dosierschieber und Dosieröffnung
2D	Rahmen Solomix-2 stationär mit Dosierschieber und Querförderband
3	Dosierschieber Solomix stationär
4A	Unterrahmen Solomix-1 stationär
4B	Unterrahmen Solomix-2 stationär 1200 - 2400
5	Stützfüße und Zusammenbau
6A	Schnecke Solomix-1 stationär
6B	Schnecke Solomix-2 stationär
6C	Schneckenmesser
7A	Elektrischer Antrieb
7B	Kompakt Einheit
8	Querförderband
9A	Auswurfschieber Zylinder mit fester Zylinderstütze
9B	Auswurfschieber Zylinder mit demontierbarer Zylinderstütze
10	Mechanische Fernbedienung
11A	Elektrische Fernbedienung, standard Einstellung
11B	Elektrische Fernbedienung, Proportionalbetätigung
12	Hydraulik Plan elektrische Fernbedienung, 2.2 kW Kompakt Einheit
13	Hydraulik Plan mech. und elektr. Fernbedienung, 7.5 / 10 kW Kompakt Einheit
14	Elektronische Waage 700 - 2400
15	Gelenkwelle

CONTENTS

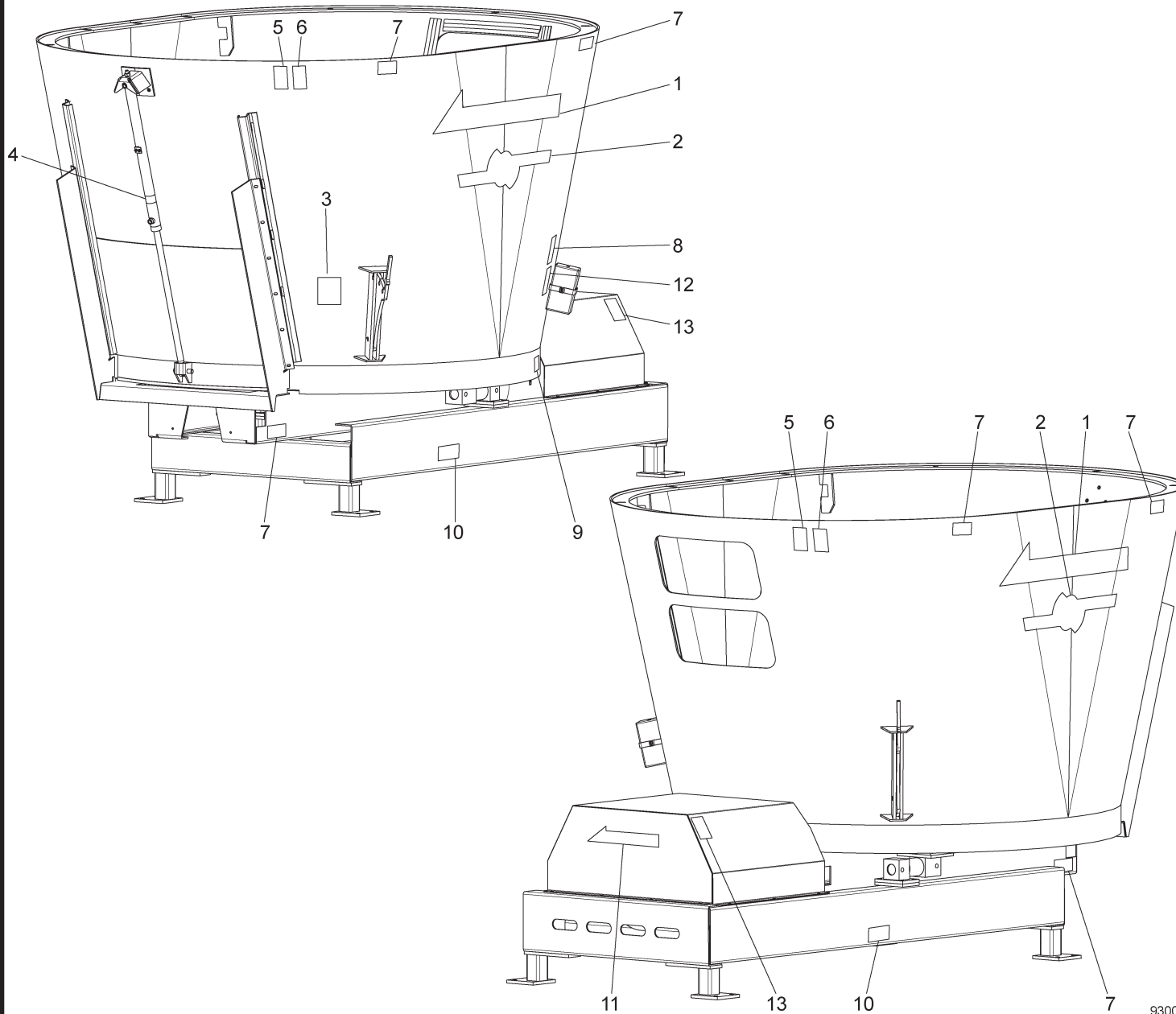
1A	Decals Solomix-1 stationary with discharge slide and opening
1B	Decals Solomix-1 stationary with discharge slide and conveyor
1C	Decals Solomix-2 stationary with discharge slide and opening
1D	Decals Solomix-2 stationary with discharge slide and conveyor
2A	Frame Solomix-1 stationary with discharge slide and opening
2B	Frame Solomix-1 stationary with discharge slide and conveyor
2C	Frame Solomix-2 stationary with discharge slide and opening
2D	Frame Solomix-2 stationary with discharge slide and conveyor
3	Slides Solomix stationary
4A	Bottom frame Solomix-1 stationary
4B	Bottom frame Solomix-2 stationary 1200 - 2400
5	Support and mounting
6A	Auger Solomix-1 stationary
6B	Auger Solomix-2 stationary
6C	Auger knives
7A	Electrical drive system
7B	Compact unit
8	Side conveyor
9A	Slide cylinders with fixed cylinder support
9B	Slide cylinders with detachable cylinder support
10	Mechanical remote control
11A	Electrical remote control, standard regulation
11B	Electrical remote control, proportional regulation
12	Hydraulics electrical remote control, 2.2 kW compact unit
13	Hydraulics mechanical and electrical remote control, 7.5 / 10 kW compact unit
14	Electronic weighing system 700 - 2400
15	PTO shaft

TABLE DES MATIÈRES

1A	Autocollants Solomix-1 stationnaire avec trappe et trou de dosage
1B	Autocollants Solomix-1 stationnaire avec trappe de dosage et tapis latéral
1C	Autocollants Solomix-2 stationnaire avec trappe et trou de dosage
1D	Autocollants Solomix-2 stationnaire avec trappe de dosage et tapis latéral
2A	Châssis Solomix-1 stationnaire avec trappe et trou de dosage
2B	Châssis Solomix-1 stationnaire avec trappe de dosage et tapis latéral
2C	Châssis Solomix-2 stationnaire avec trappe et trou de dosage
2D	Châssis Solomix-2 stationnaire avec trappe de dosage et tapis latéral
3	Trappes de dosage Solomix stationnaire
4A	Châssis en bas Solomix-1 stationnaire
4B	Châssis en bas Solomix-2 stationnaire 1200 - 2400
5	Points d'appui et fixation
6A	Vis Solomix-1 stationnaire
6B	Vis Solomix-2 stationnaire
6C	Couteaux
7A	Système d'entraînement électrique
7B	Unité compacte
8	Tapis latéral
9A	Porte de dosage: cylindres hydraulique avec support fixe
9B	Porte de dosage: cylindres hydraulique avec support amovible
10	Commande mécanique
11A	Commande électrique, réglage standard
11B	Commande électrique, réglage proportionnel
12	Commande électrique: système hydraulique, 2,2 kW unité compacte
13	Comm. mécanique et électrique: système hydraulique, 7.5 / 10 kW unité compacte
14	Pesée électronique 700 - 2400
15	Arbre de prise de force

92211

- Afbeelding 1A : Stickers Solomix-1 stationair met doseerschuif en doseeropening
 Abbildung 1A : Aufkleber Solomix-1 stationär mit Dosierschieber und Dosieröffnung
 Picture 1A : Decals Solomix-1 stationairy with discharge slide and opening
 Illustration 1A : Autocollants Solomix-1 stationnaire avec trappe et trou de dosage



93009A

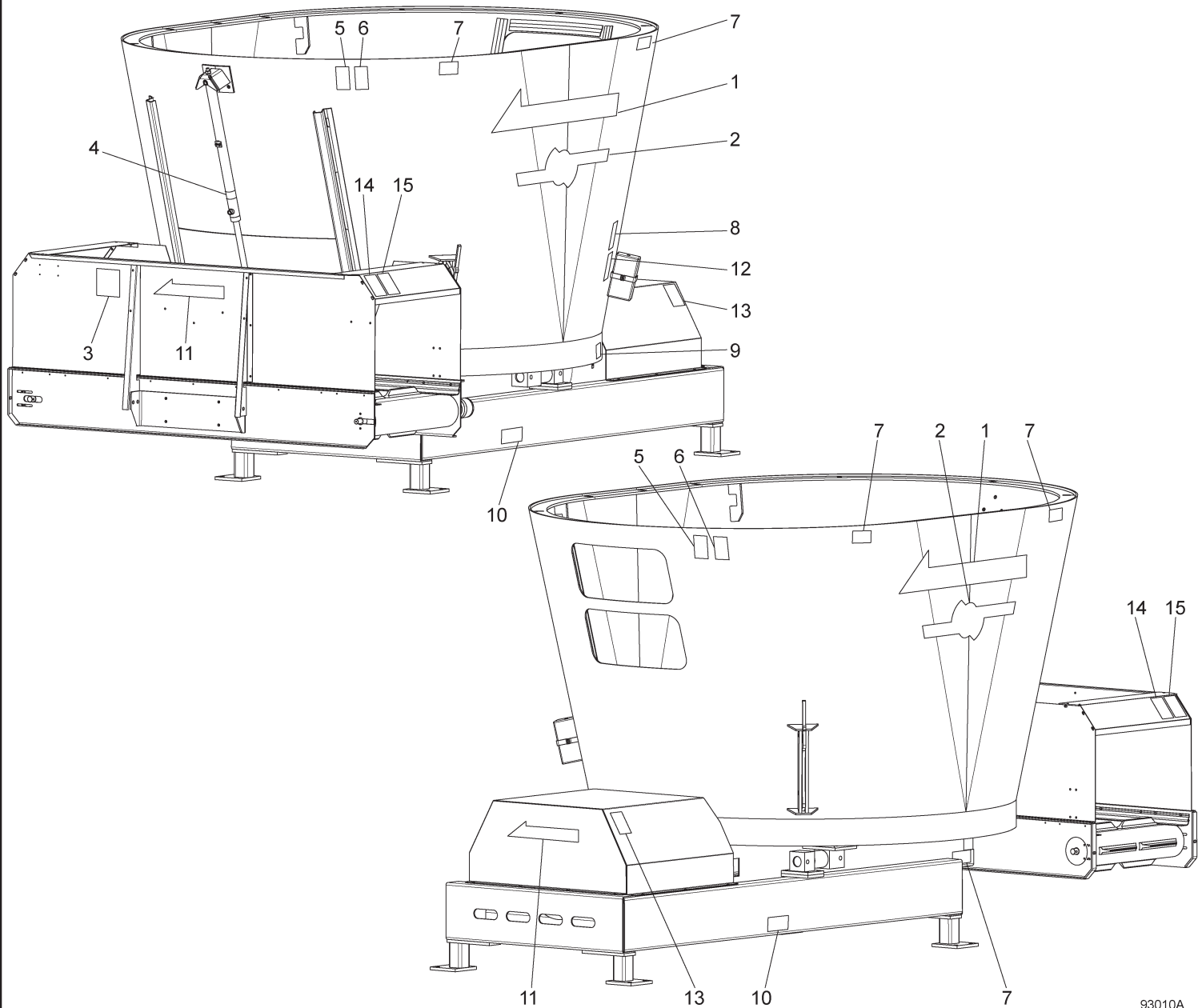
Bestelnummer
 Bestellnummer
 Ordernummer
 Num. a commander

1	91396	2	
2A	91418	2	700
2B	91412	2	800
2C	91419	2	900
2D	91398	2	1000
2E	91413	2	1200
2F	91417	2	1400
3	91159	1	
4	91182	1	
5	91242	2	
6	91245	2	
7	91183	6	
8	91340	1	
9	91118	1	
10	91333	2	
11	91407	1	
12	91429	1	
13	91430	1	

93009AL1

92211

- Afbeelding 1B : Stickers Solomix-1 stationair met doseerschuif en dwarsband
 Abbildung 1B : Aufkleber Solomix-1 stationär mit Dosierschieber und Querförderband
 Picture 1B : Decals Solomix-1 stationairy with discharge slide and conveyor
 Illustration 1B : Autocollants Solomix-1 stationnaire avec trappe de dosage et tapis latéral



93010A

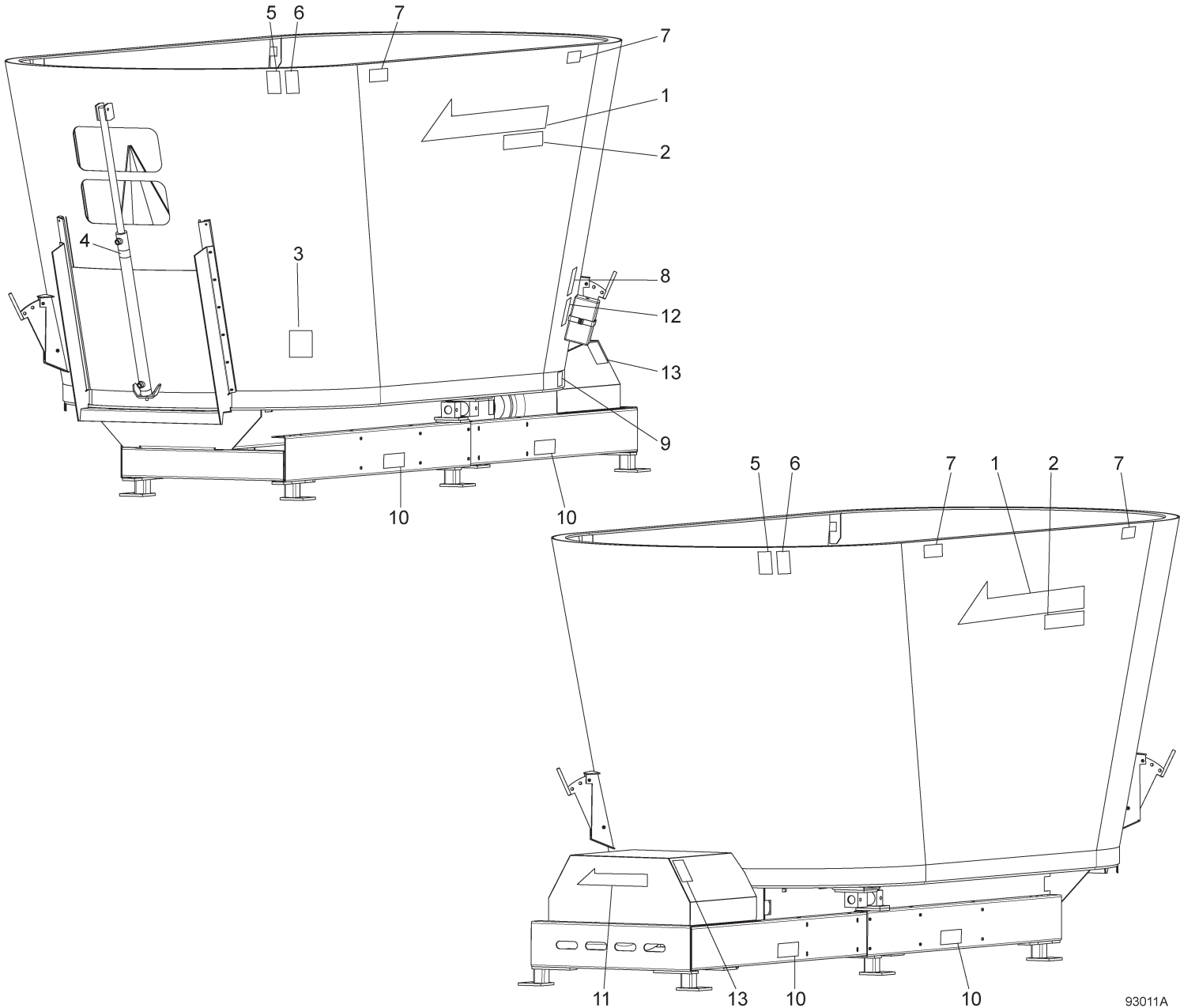
Bestelnummer
 Bestellnummer
 Ordernummer
 Num. a commander

1	91396	2	
2A	91418	2	700
2B	91412	2	800
2C	91419	2	900
2D	91398	2	1000
2E	91413	2	1200
2F	91417	2	1400
3	91159	1	
4	91182	1	
5	91242	2	
6	91245	2	
7	91183	6	
8	91340	1	
9	91118	1	
10	91333	2	
11	91407	1	
12	91429	1	
13	91430	1	
14	91162	2	
15	91152	2	

93010AL1

92211

- Afbeelding 1C : Stickers Solomix-2 stationair met doseerschuif en doseeropening
 Abbildung 1C : Aufkleber Solomix-2 stationär mit Dosierschieber und Dosieröffnung
 Picture 1C : Decals Solomix-2 stationairy with discharge slide and opening
 Illustration 1C : Autocollants Solomix-2 stationnaire avec trappe et trou de dosage



93011A

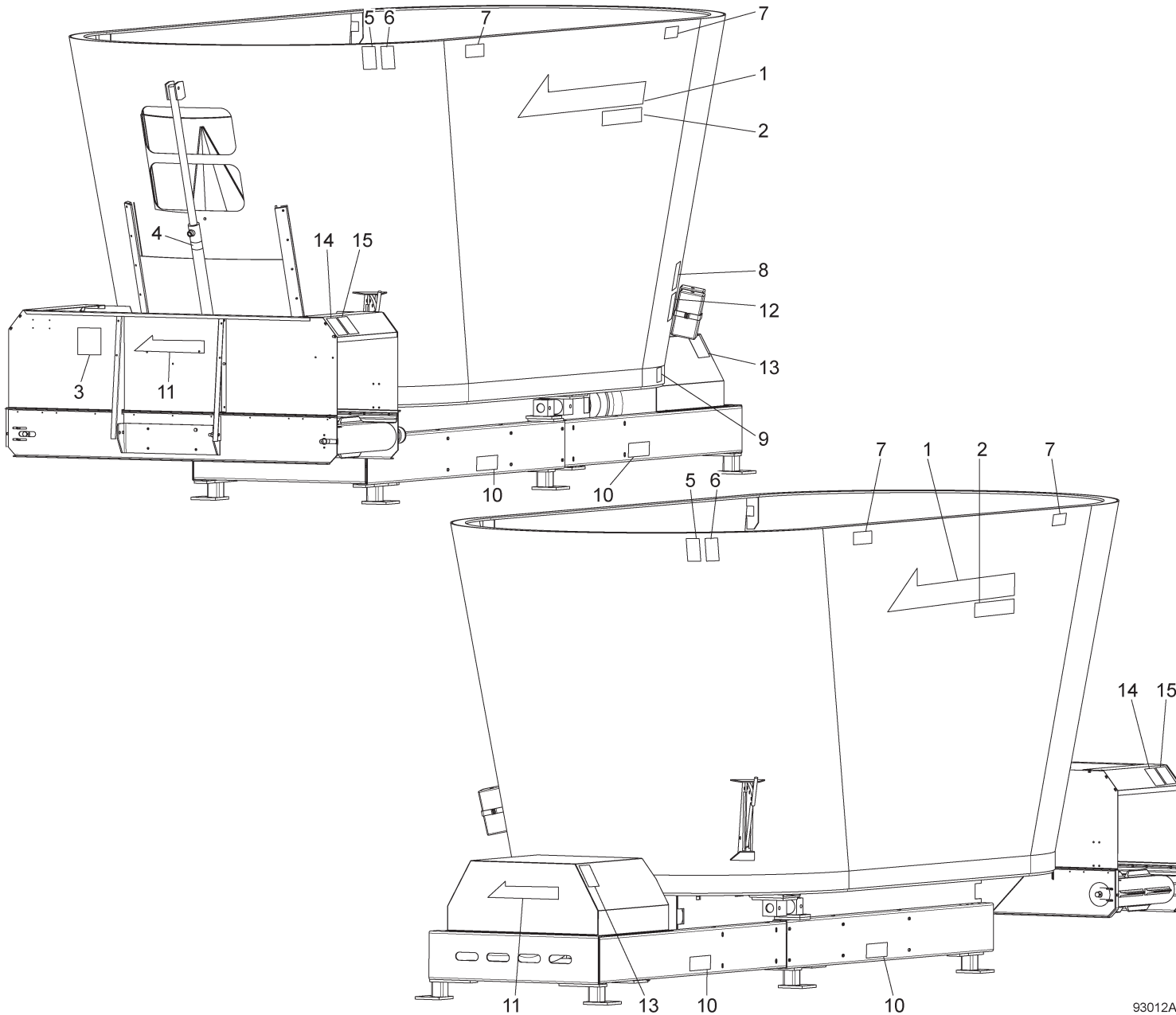
Bestellnummer
 Bestellnummer
 Ordernummer
 Num. a commander

1	91304	2	
2A	91341	2	1200
2B	91313	2	1400
2C	91302	2	1600
2D	91314	2	1800
2E	91303	2	2000
2F	91344	2	2400
3	91159	1	
4	91182	1	
5	91242	2	
6	91245	2	
7	91183	4	
8	91340	1	
9	91118	1	
10	91333	2	
11	91407	1	
12	91429	1	
13	91430	1	

93011AL1

92211

- Afbeelding 1D : Stickers Solomix-2 stationair met doseerschuif en dwarsband
 Abbildung 1D : Aufkleber Solomix-2 stationär mit Dosierschieber und Querförderband
 Picture 1D : Decals Solomix-2 stationary with discharge slide and conveyor
 Illustration 1D : Autocollants Solomix-2 stationnaire avec trappe de dosage et tapis latéral



93012A

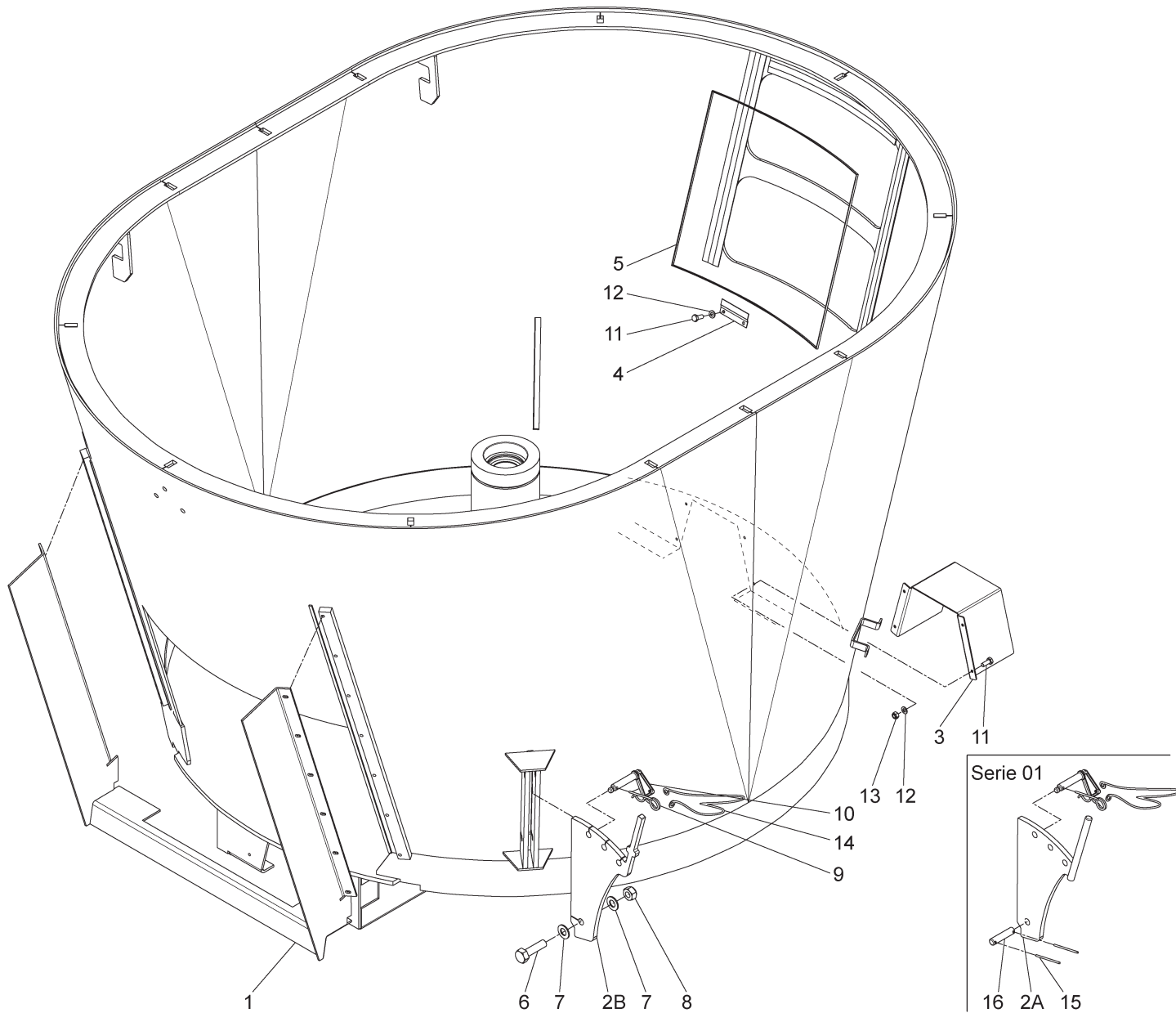
Bestellnummer
 Bestellnummer
 Ordernummer
 Num. a commander

1	91304	2	
2A	91341	2	1200
2B	91313	2	1400
2C	91302	2	1600
2D	91314	2	1800
2E	91303	2	2000
2F	91344	2	2400
3	91159	1	
4	91182	1	
5	91242	2	
6	91245	2	
7	91183	4	
8	91340	1	
9	91118	1	
10	91333	2	
11	91407	1	
12	91429	1	
13	91430	1	
14	91162	2	
15	91152	2	

93012AL1

92211

Afbeelding 2A : Frame Solomix-1 stationair met doseerschuif en doseeropening
 Abbildung 2A : Rahmen Solomix-1 stationär mit Dosierschieber und Dosieröffnung
 Picture 2A : Frame Solomix-1 stationairy with discharge slide and opening
 Illustration 2A : Châssis Solomix-1 stationnaire avec trappe et trou de dosage

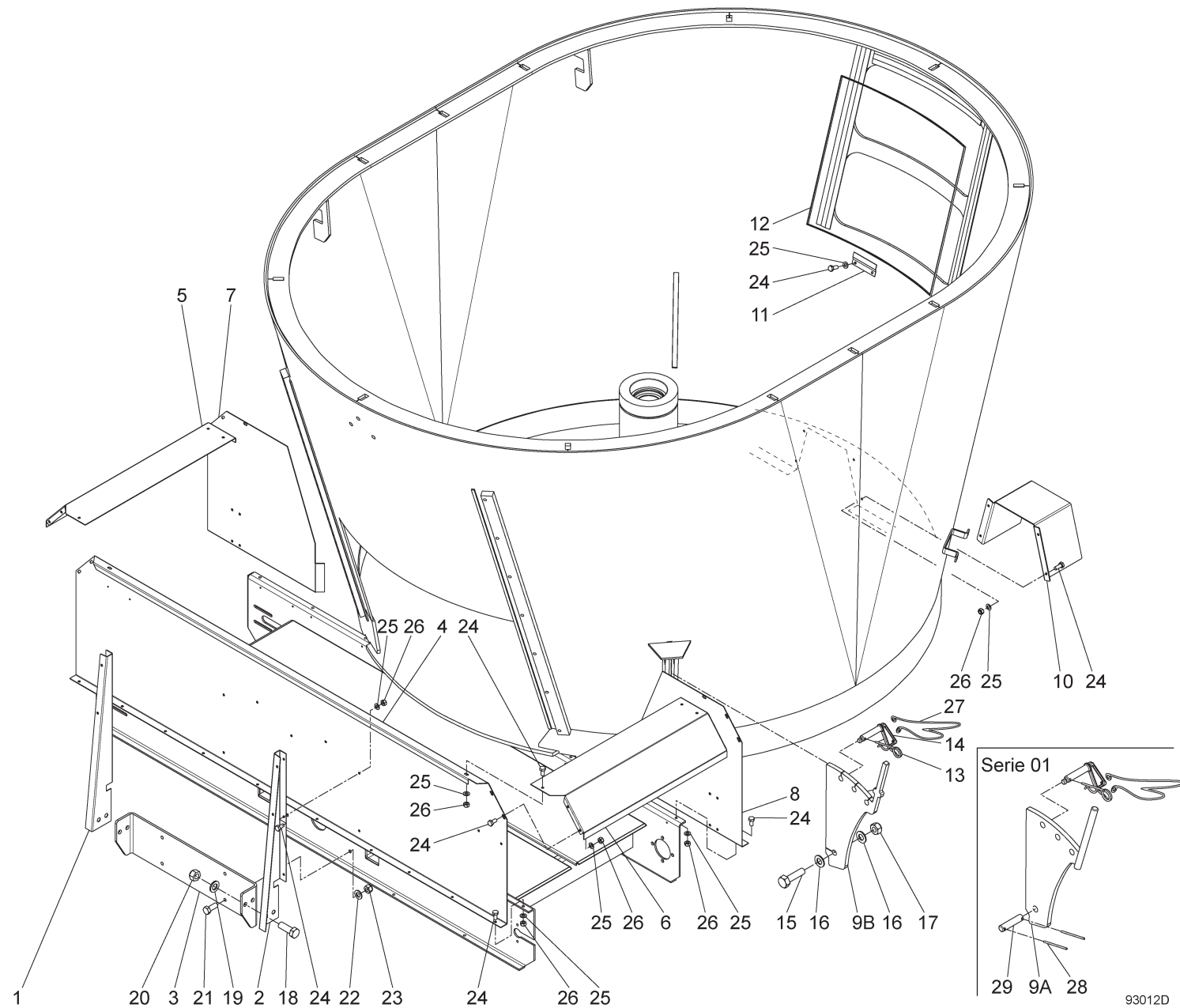


Bestellnummer
 Bestellnummer
 Ordernummer
 Num. a commander

1	13775	1
2A	11998	2
2B	42084	2
3	43391	1
4	40619	1
5	60320	1
6	82080	2 M20 x 80
7	85120	4 M20
8	86220	2 M20
9	65030	2
10	90490	2
11	80821	6 M8 x 20
12	85108	6 M8
13	86208	4 M8
14	90282	2
15	88239	4 Ø5 x 40
16	25332	2

92211

Afbeelding 2B : Frame Solomix-1 stationair met doseerschuiif en dwarsband
 Abbildung 2B : Rahmen Solomix-1 stationär mit Dosierschieber und Querförderband
 Picture 2B : Frame Solomix-1 stationairy with discharge slide and conveyor
 Illustration 2B : Châssis Solomix-1 stationnaire avec trappe de dosage et tapis latéral

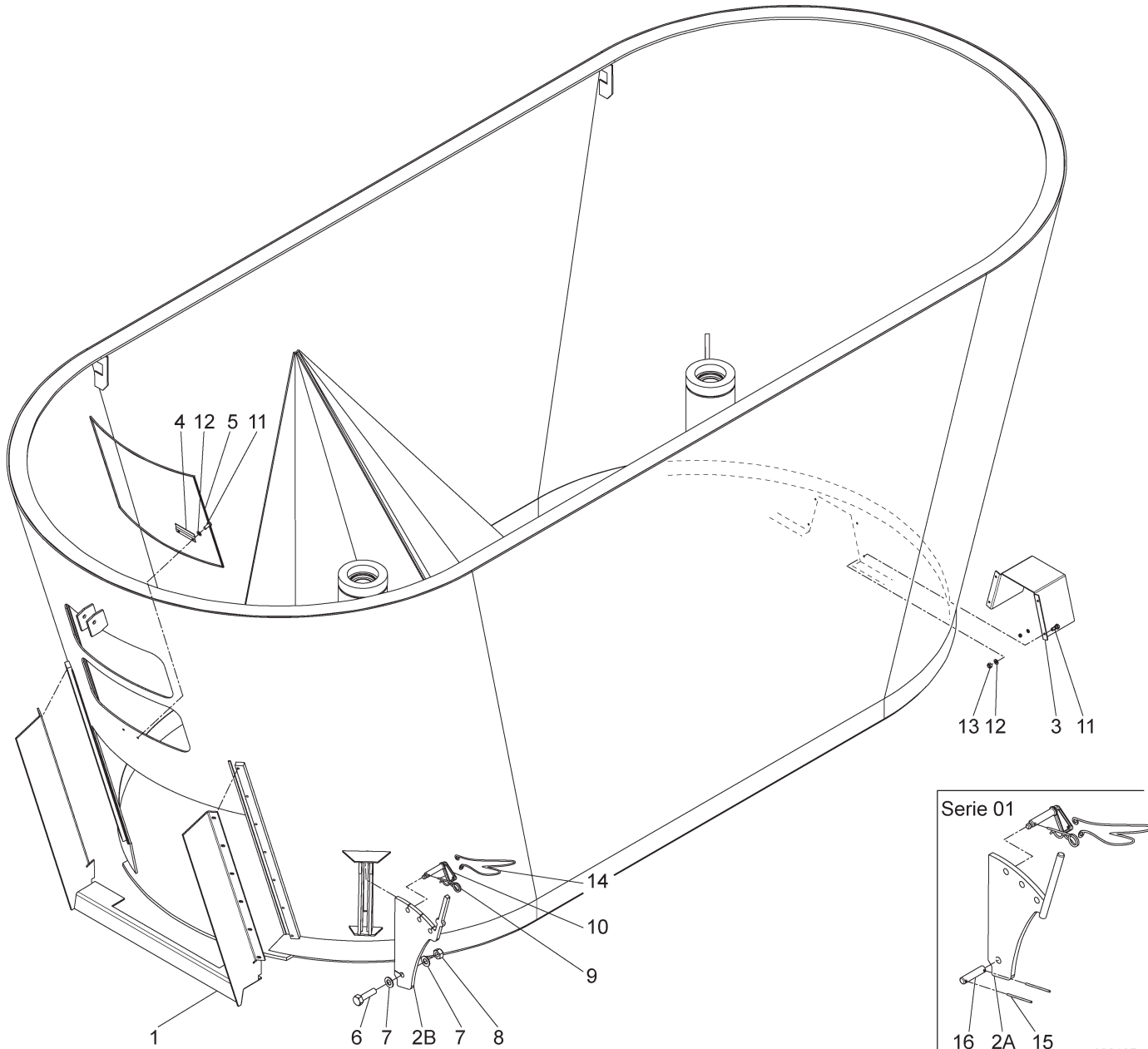


Bestellnummer
 Bestellnummer
 Ordernummer
 Num. a commander

1	27039	1
2	27038	1
3	43052	1
4	40620	1
5	27050	1
6	27051	1
7	42092	1
8	42091	1
9A	11998	2
9B	42084	2
10	43391	1
11	40619	1
12	60320	1
13	65030	2
14	90490	2
15	82080	2 M20 x 80
16	85120	4 M20
17	86220	2 M20
18	81646	4 M16 x 45
19	85116	4 M16
20	86216	4 M16
21	81231	4 M12 x 30
22	85112	4 M12
23	86212	4 M12
24	80821	38 M8 x 20
25	85108	38 M8
26	86208	36 M8
27	90282	2
28	88239	4 Ø5 x 40
29	25332	2

92211

Afbeelding 2C : Frame Solomix-2 stationair met doseerschuif en doseeropening
 Abbildung 2C : Rahmen Solomix-2 stationär mit Dosierschieber und Dosieröffnung
 Picture 2C : Frame Solomix-2 stationary with discharge slide and opening
 Illustration 2C : Châssis Solomix-2 stationnaire avec trappe et trou de dosage

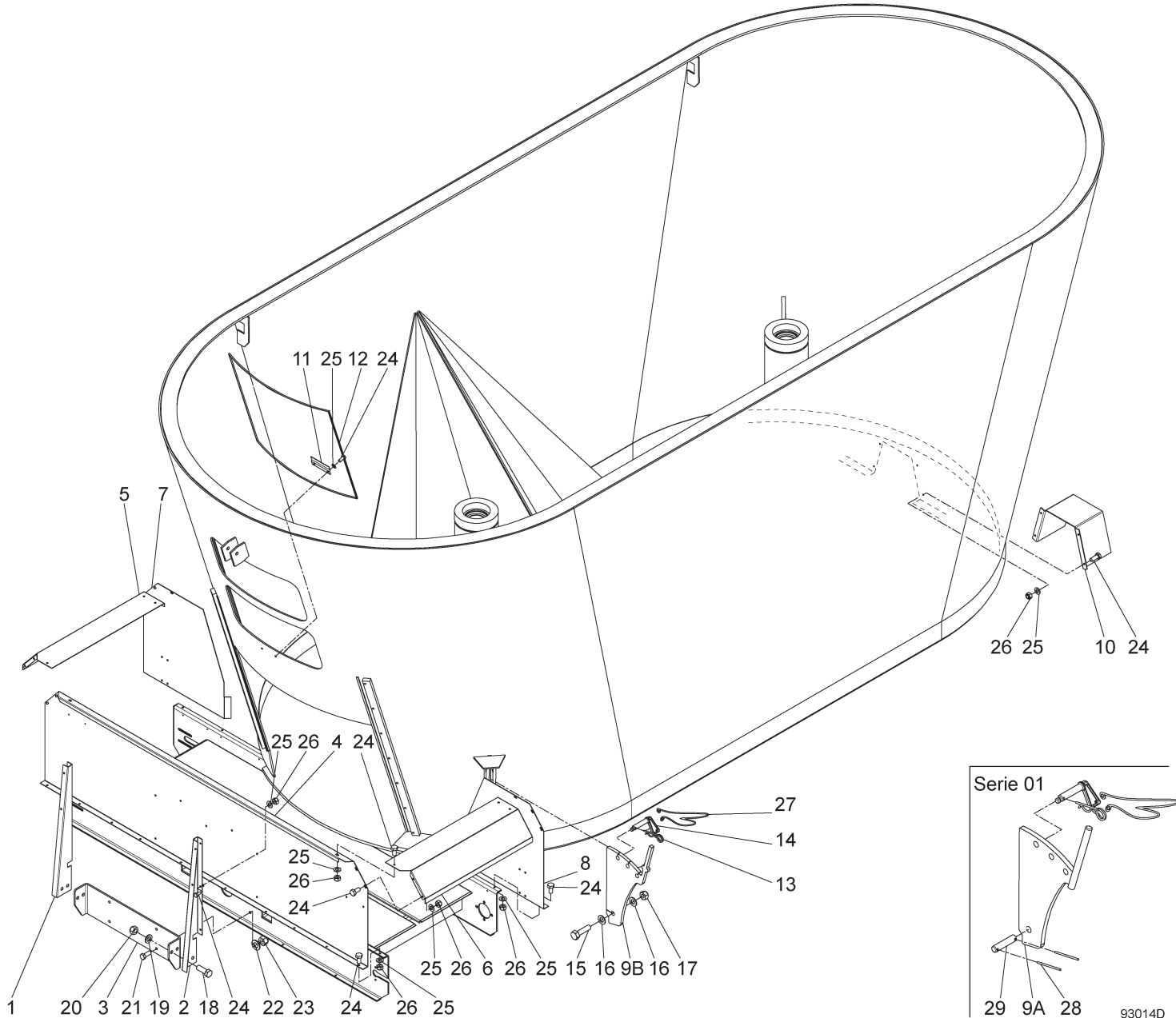


Bestelnummer
 Bestellnummer
 Ordernummer
 Num. a commander

1	13775	1
2A	11998	2
2B	42084	2
3	43391	1
4	40619	1
5	60320	1
6	82080	2 M20 x 80
7	85120	4 M20
8	86220	2 M20
9	65030	2
10	90490	2
11	80821	6 M8 x 20
12	85108	6 M8
13	86208	4 M8
14	90282	2
15	88239	4 Ø5 x 40
16	25332	2

92211

Afbeelding 2D : Frame Solomix-2 stationair met doseerschuif en dwarsband
 Abbildung 2D : Rahmen Solomix-2 stationär mit Dosierschieber und Querförderband
 Picture 2D : Frame Solomix-2 stationary with discharge slide and conveyor
 Illustration 2D : Châssis Solomix-2 stationnaire avec trappe de dosage et tapis latéral

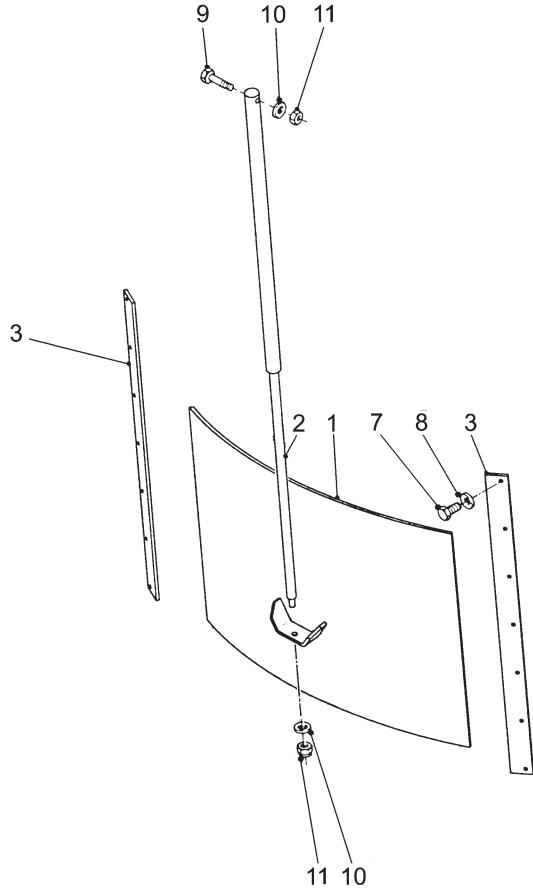


Bestelnummer
 Bestellnummer
 Ordernummer
 Num. a commander

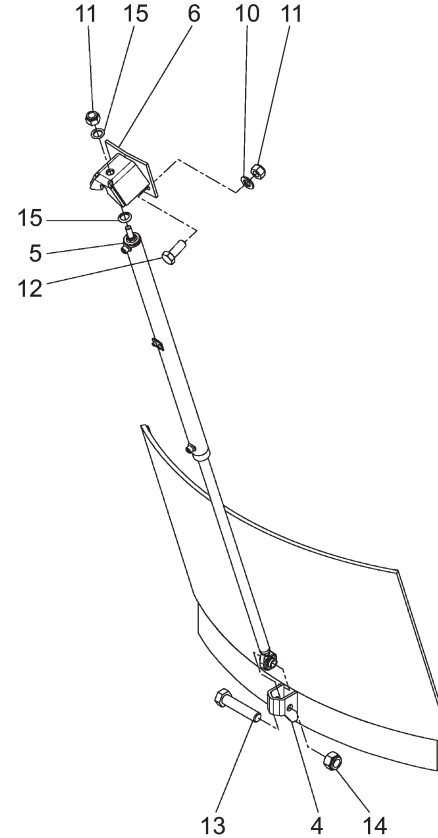
1	27039	1
2	27038	1
3	43052	1
4	40620	1
5	27050	1
6	27051	1
7A	27863	1 1200
7B	40682	1 1400 / 1600
7C	29675	1 1800 / 2000
7D	28610	1 2400
8A	27864	1 1200
8B	40683	1 1400 / 1600
8C	29674	1 1800 / 2000
8D	28611	1 2400
9A	11998	2
9B	42084	2
10	43391	1
11	40619	1
12	60320	1
13	65030	2
14	90490	2
15	82080	2 M20 x 80
16	85120	4 M20
17	86220	2 M20
18	81646	4 M16 x 45
19	85116	4 M16
20	86216	4 M16
21	81231	4 M12 x 30
22	85112	4 M12
23	86212	4 M12
24	80821	38 M8 x 20
25	85108	38 M8
26	86208	36 M8
27	90282	2
28	88239	4 Ø5 x 40
29	25332	2

92211

- Afbeelding 3 : Doseerklappen Solomix stationair
 Abbildung 3 : Dosierschieber Solomix stationär
 Picture 3 : Slides Solomix stationairy
 Illustration 3 : Trappes de dosage Solomix stationnaire



Serie 01



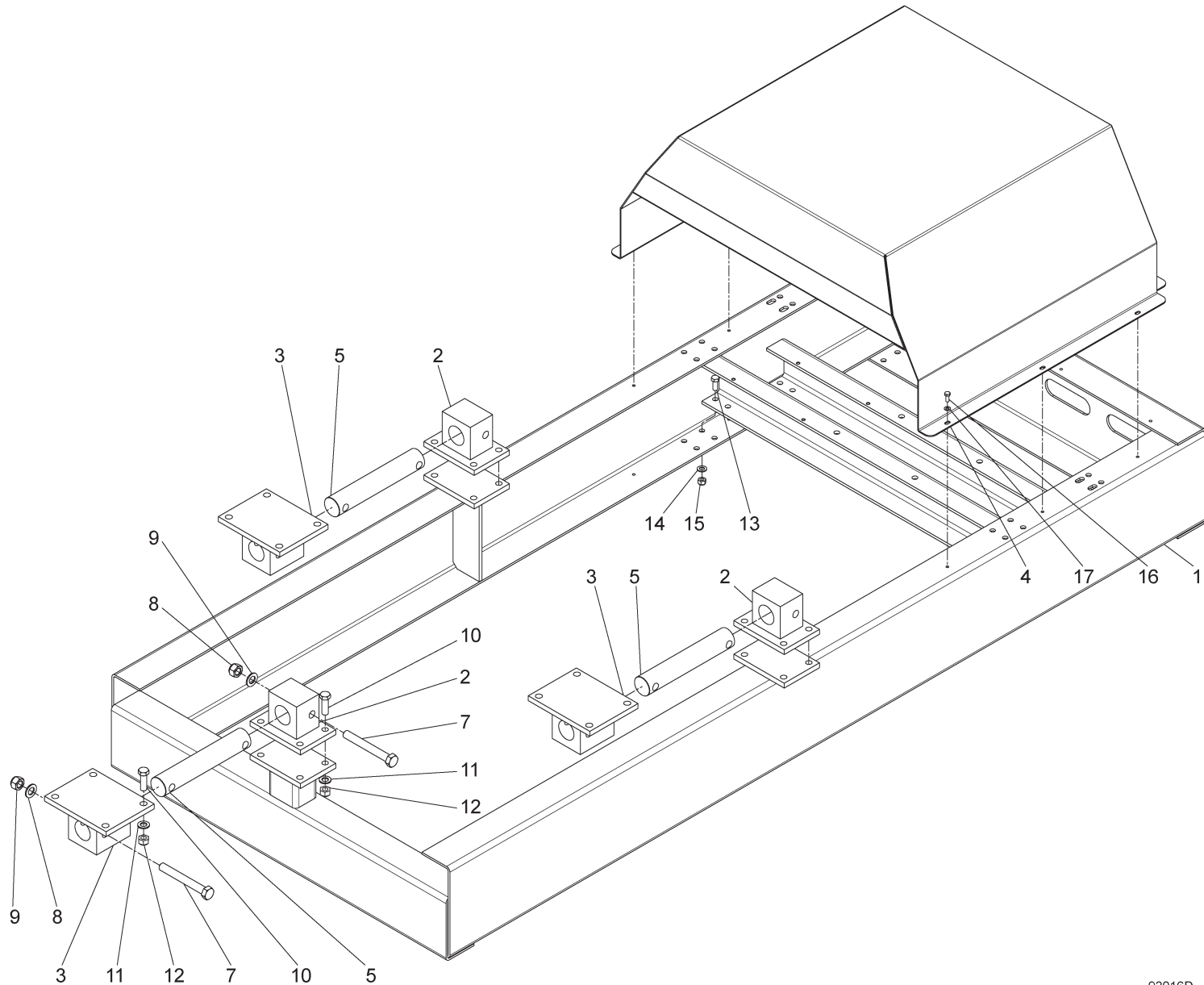
Serie 02

Bestelnummer
 Bestellnummer
 Ordernummer
 Num. a commander

1A	12454	1	700 / 900
1B	12011	1	800 / 1000 / 1-1200
1C	12367	1	1-1400
1D	12964	1	2-1200
1E	12206	1	2-1400 / 2-1600
1F	13362	1	2-1600L / 2-1800 / 2-2000
1G	12948	1	2-2400
2A	51174	1	700 / 900
2B	51154	1	2-1200
2C	51062	1	1-800 to 2-2400
3	24446	2	
4A	13870	1	700 / 900
4B	13575	1	800
4C	13389	1	1000 / 1-1200
4D	13856	1	2-1200
5A	51229	1	700 / 800 / 900 / 2-1200
5B	51230	1	1000 / 1-1200 / 1-1400
6	13696	1	
7	81031	14	M10 x 30
8	85010	14	M10
9	81690	1	M16 x 90
10	85116	2	M16
11	86216	2	M16
12	81641	2	M16 x 40
13	82090	1	M20 x 90
14	86220	1	M20
15	85259	2	Ø26 x Ø18 x 3.5

92211

Afbeelding 4A : Onderframe Solomix-1 stationair
 Abbildung 4A : Unterrahmen Solomix-1 stationär
 Picture 4A : Bottom frame Solomix-1 stationairy
 Illustration 4A : Châssis en bas Solomix-1 stationnaire

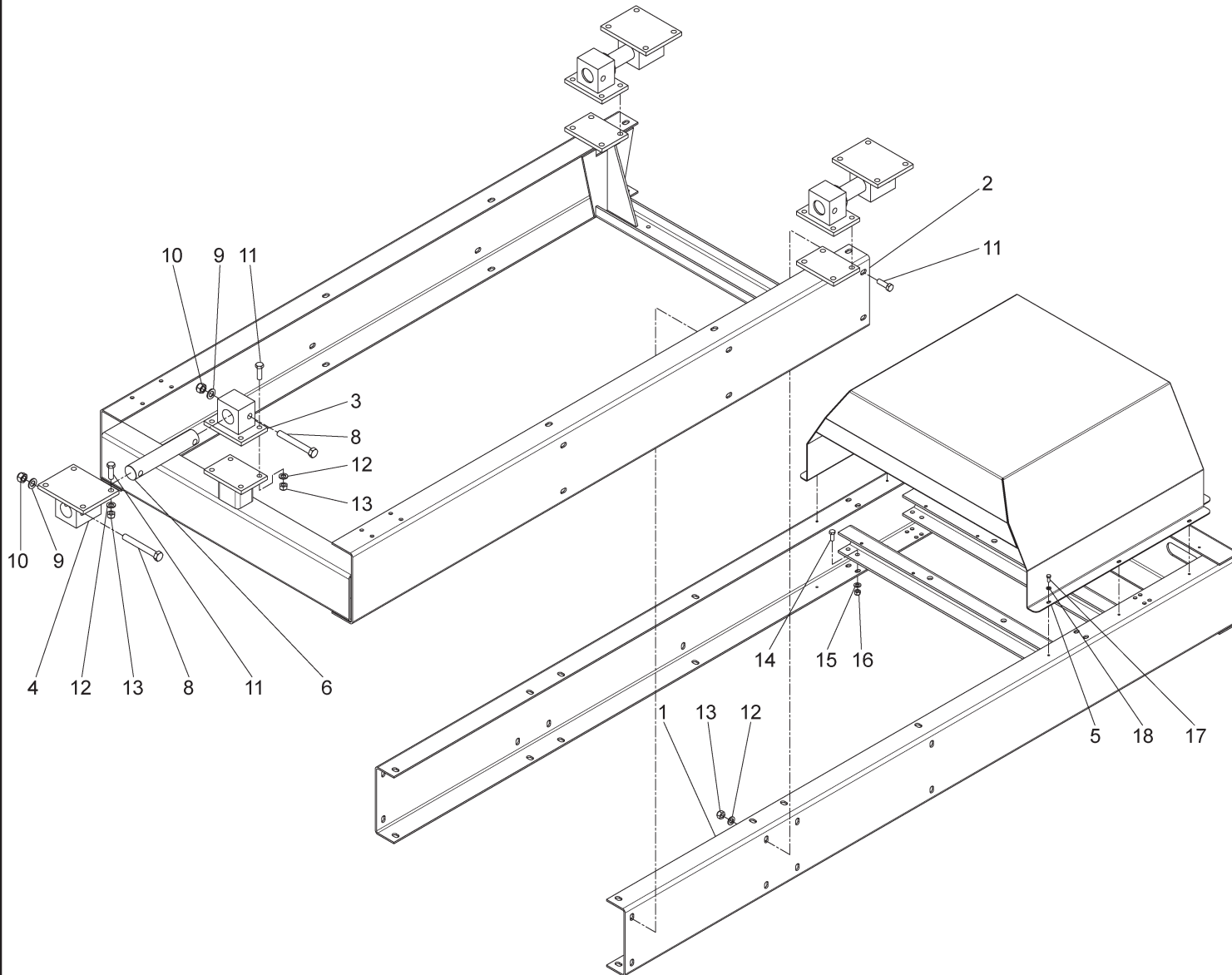


Bestelnummer
 Bestellnummer
 Ordernummer
 Num. a commander

1	13787	1
2	12457	3
3	13663	3
4	13678	1
5	32000	3 Ø55
7	82013	6 M20 x 130
8	85120	6 M20
9	86220	6 M20
10	81650	24 M16 x 50
11	85116	24 M16
12	86216	24 M16
13	81231	8 M12 x 30
14	85112	8 M12
15	86212	8 M12
16	80821	6 M8 x 20
17	85108	6 M8 x 20

92211

Afbeelding 4B : Onderframe Solomix-2 stationair 1200 - 2400
 Abbildung 4B : Unterrahmen Solomix-2 stationär 1200 - 2400
 Picture 4B : Bottom frame Solomix-2 stationairy 1200 - 2400
 Illustration 4B : Châssis en bas Solomix-2 stationnaire 1200 - 2400

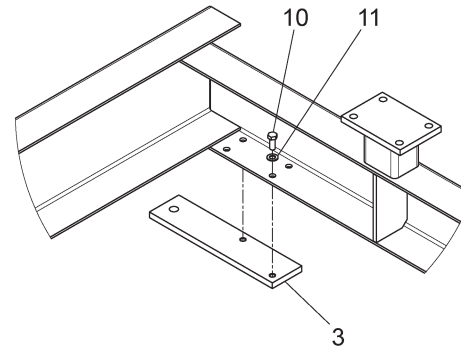
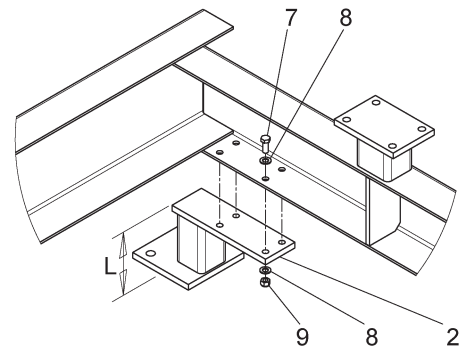
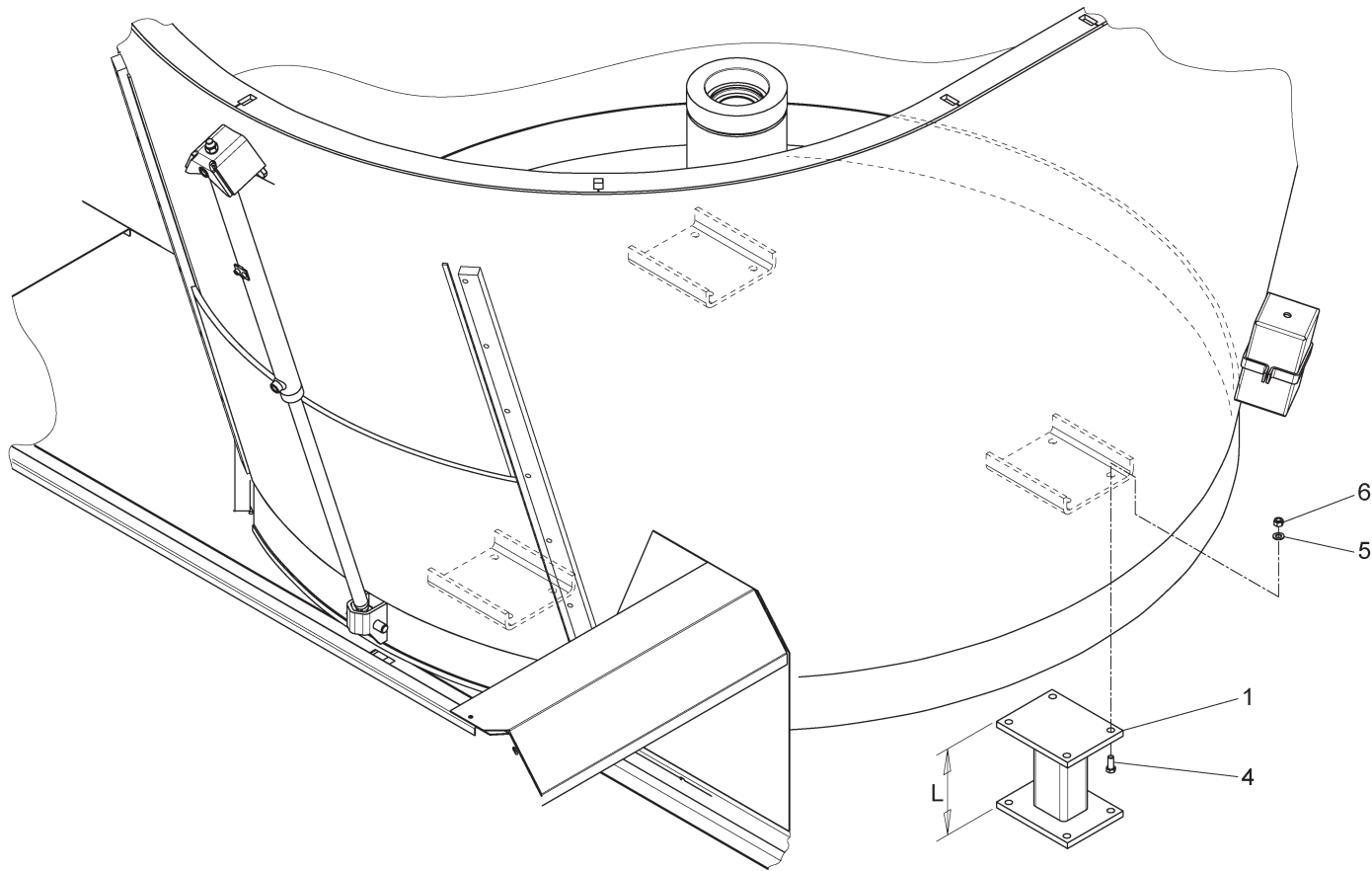


Bestelnummer
 Bestellnummer
 Ordernummer
 Num. a commander

1	13687	1
2	13686	1
3	12457	3
4	13678	3
5	13678	1
6	32000	3 Ø55
8	82013	6 M20 x 130
9	85120	6 M20
10	86220	6 M20
11	81650	32 M16 x 50
12	85116	32 M16
13	86216	32 M16
14	81231	8 M12 x 30
15	85112	8 M12
16	86212	8 M12
17	80821	6 M8 x 20
18	85108	6 M8 x 20

92211

Afbeelding 5 : Steunpoten en bevestiging
 Abbildung 5 : Stützfüße und Zusammenbau
 Picture 5 : Support and mounting
 Illustration 5 : Points d'appui et fixation

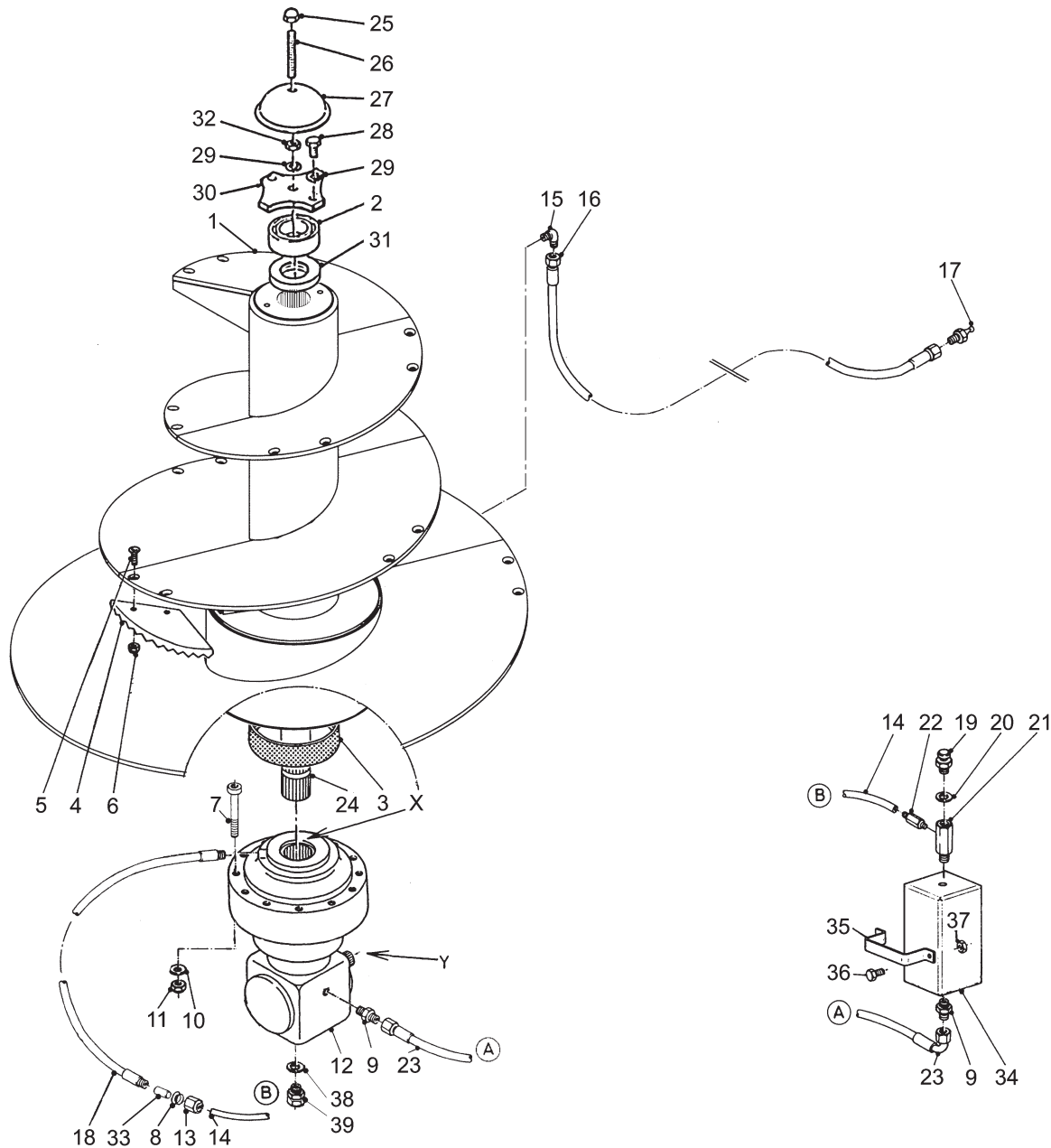


Bestellnummer
 Bestellnummer
 Ordernummer
 Num. a commander

1	13910	3	L auf Kundenangabe
2	13604	4	L auf Kundenangabe
3	43194	4	
4	81650	12	M16 x 50
5	85116	12	M16
6	86216	12	M16
7	81250	16	M12 x 50
8	85112	32	M12
9	86212	16	M12
10	81221	8	M12 x 20
11	85012	8	M12

92211

Afbeelding 6A : Mengvijzel Solomix-1 stationair
 Abbildung 6A : Schnecke Solomix-1 stationär
 Picture 6A : Auger Solomix-1 stationairy
 Illustration 6A : Vis Solomix-1 stationnaire

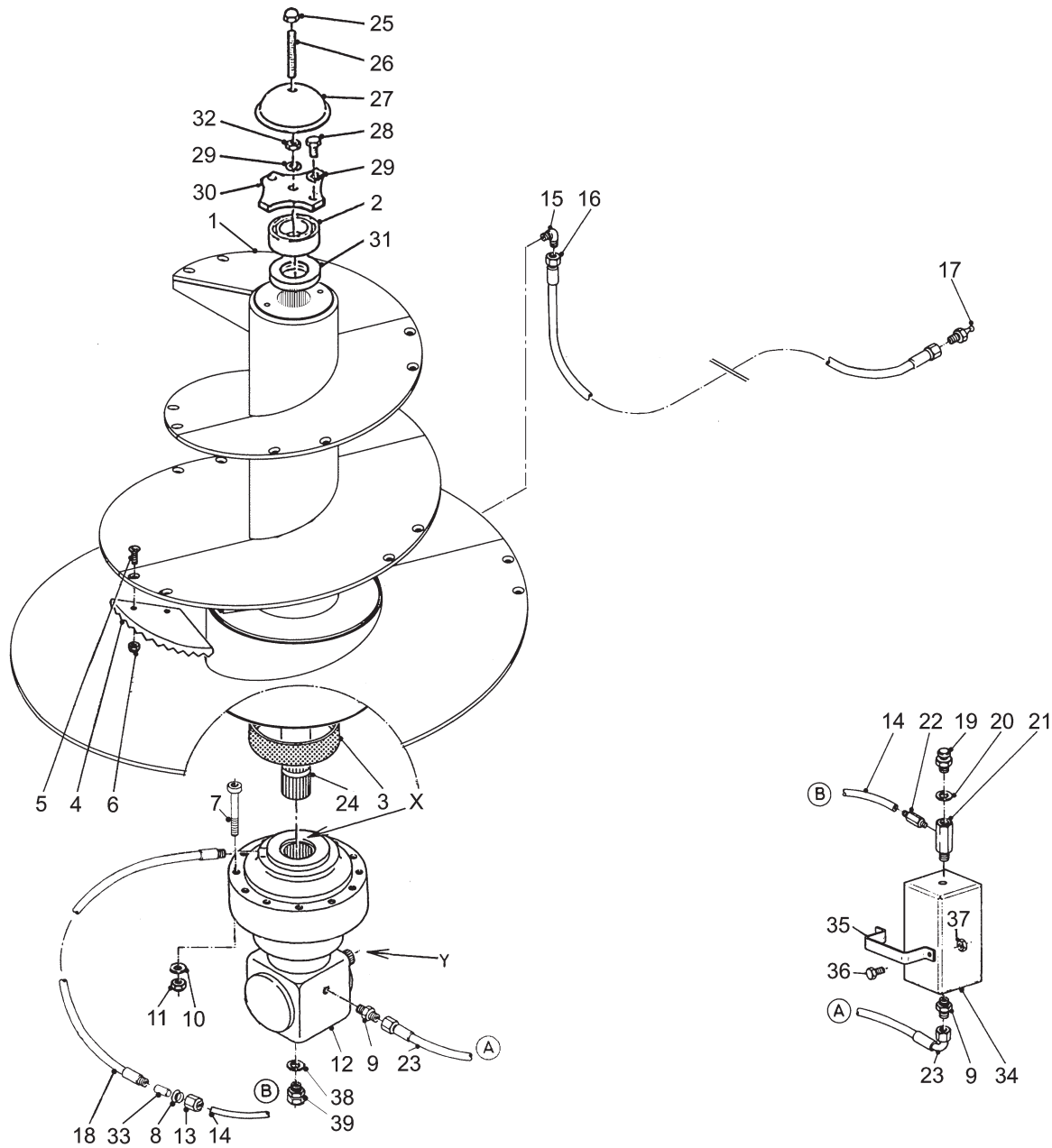


Bestelnummer
 Bestellnummer
 Ordernummer
 Num. a commander

1A	13224	1	700
1B	13447	1	800
1C	12669	1	900
1D	13401	1	1000
1E	12941	1	1200
1F	12832	1	1400
2	70143	1	
3	51867	1	
4	31841	4	
5	84206	10	M16x60
6	86216	10	M16
7	84487	12	M14x140
8	50412	1	
9	X50112	2	
10	85114	12	M14
11	86214	12	M14
12A	94130	1	i = 27.56
12B	94130/1	1	i = 32.6
12C	94130/2	1	i = 43.89
13	50411	1	
14	52673	1	Ø8 L = 2000
15	50107	1	
16	50957	1	1/4" 1520RR
17	89518	1	
18	52734	1	1/4" 800RR
19	90567	1	
20	85215	1	
21	50176	1	
22	50285	1	
23	W50665	1	3/8" 1850RH
24A	32307	1	Ø85 L=810 700 / 800
24B	31832	1	Ø85 L=880 900
24C	32044	1	Ø85 L=1043 1000 / 1200
24D	32178	1	Ø85 L=1230 1400
25	86937	1	M16
26	84072	1	M16 x 120
27	29299	1	
28	81626	2	M16 x 25
29	85016	3	M16
30	29298	1	

92211

Afbeelding 6A : Mengvijzel Solomix-1 stationair
 Abbildung 6A : Schnecke Solomix-1 stationär
 Picture 6A : Auger Solomix-1 stationairy
 Illustration 6A : Vis Solomix-1 stationnaire

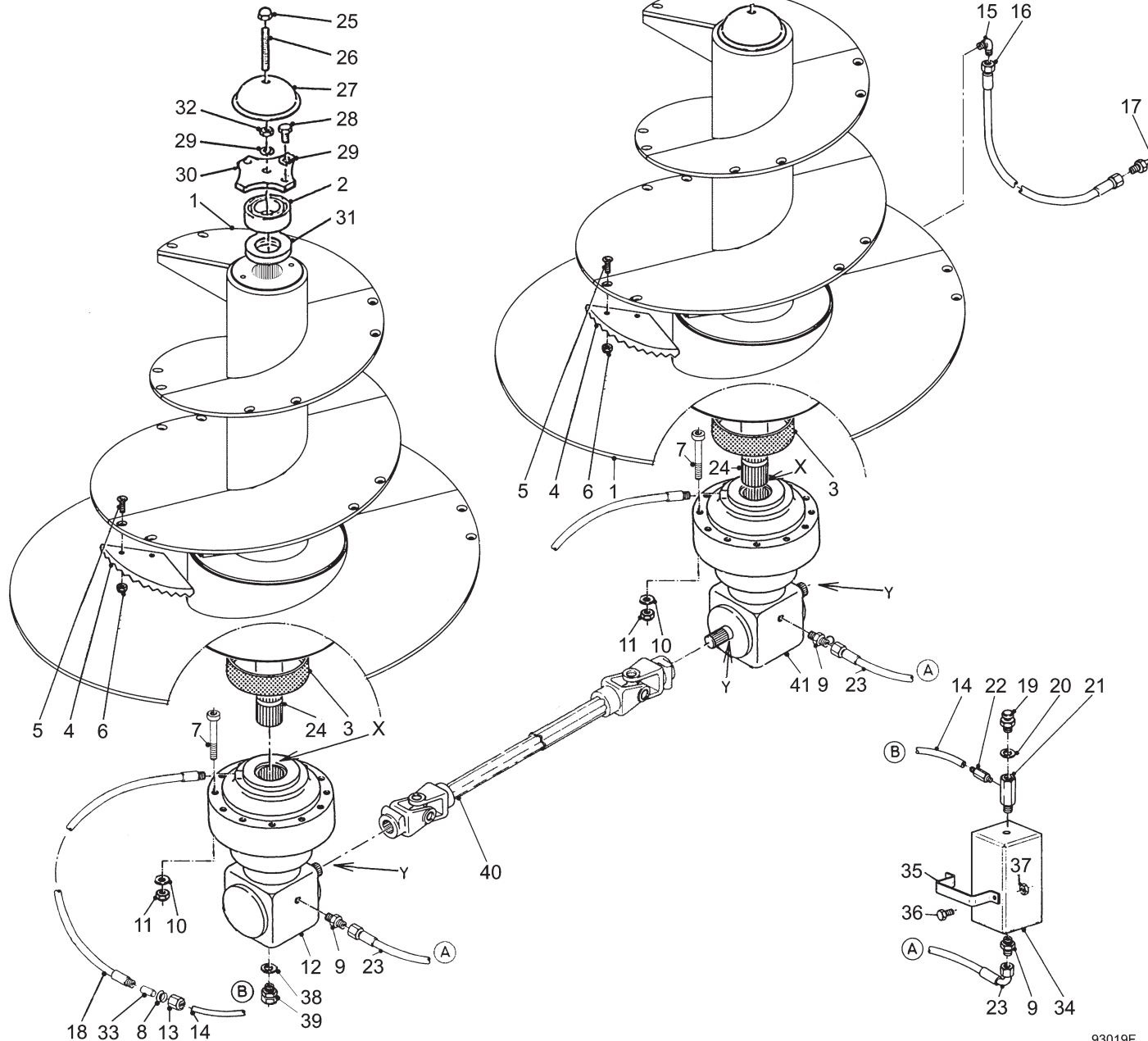


Bestelnummer
 Bestellnummer
 Ordernummer
 Num. a commander

31	70145	1	
32	86116	1	M16
33	50278	1	Ø8
34	90974	1	
35	28845	1	
36	80831	2	M8 x 30
37	86208	2	M8
38	85236	1	
39	53375	1	
X	70168	1	100 x 130 x 12
Y	05476	1	

92211

Afbeelding 6B : Mengvijzel Solomix-2 stationair
 Abbildung 6B : Schnecke Solomix-2 stationär
 Picture 6B : Auger Solomix-2 stationairy
 Illustration 6B : Vis Solomix-2 stationnaire

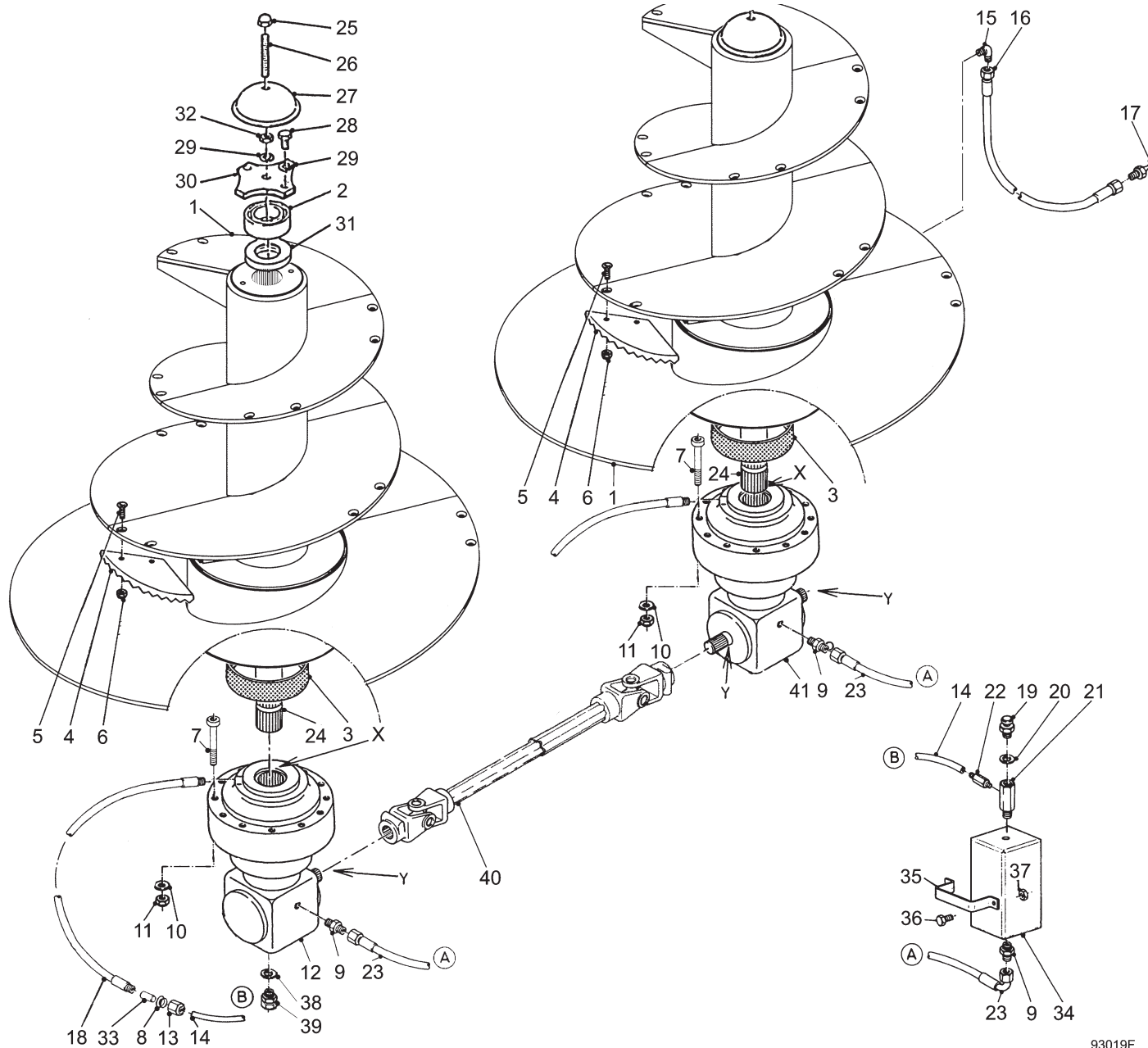


Bestelnummer
 Bestellnummer
 Ordernummer
 Num. a commander

1A	13597	2	1400
1B	13598	2	1600
1C	12941	2	2400
2	70143	2	
3	51867	2	
4	31841	6	
5	84206	12	M16x60
6	86216	12	M16
7	84487	24	M14x140
8	50412	2	
9	X50112	4	
10	85114	24	M14
11	86214	24	M14
12	94130	1	
13	50411	2	
14A	52675	1	Ø8 L = 3000
14B	52676	1	Ø8 L = 4600
15	50107	2	
16A	50957	1	1/4" 1520RR
16B	52623	1	1/4" 3400RR
17	89518	2	
18	52734	2	1/4" 800RR
19	90567	2	
20	85215	2	
21	50176	2	
22	50285	2	
23A	W50659	1	3/8" 2700RH
23B	W50622	1	3/8" 4500RH
24A	32044	1	Ø85 L=1043 1400
24B	32178	1	Ø85 L=1230 16 / 2400
25	86937	2	M16
26	84072	2	M16 x 120
27	29299	2	
28	81626	4	M16 x 25
29	85016	6	M16
30	29298	2	
31	70145	2	
32	86116	2	M16
33	50278	2	Ø8
34	90974	2	

92211

Afbeelding 6B : Mengvrijel Solomix-2 stationair
 Abbildung 6B : Schnecke Solomix-2 stationär
 Picture 6B : Auger Solomix-2 stationairy
 Illustration 6B : Vis Solomix-2 stationnaire



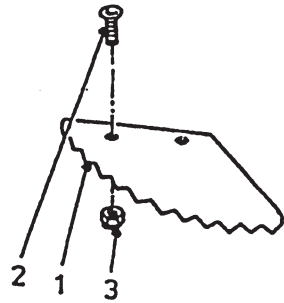
Bestelnummer
 Bestellnummer
 Ordernummer
 Num. a commander

35	28845	2
36	80831	4 M8 x 30
37	86208	4 M8
38	85236	2
39	53375	2
40A	94097	1 1 ³ / ₈ -6 L=1050 14/16/18/20
40B	94186	1 W2400 1 ³ / ₈ -6 L=1310 2400
41	94336	1
X	70168	2 100 x 130 x 12
Y	05476	3

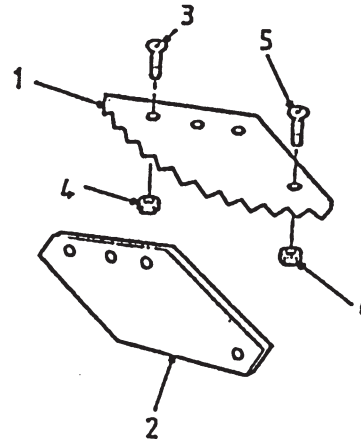
92211

Afbeelding 6C : Vijzelmessen
 Abbildung 6C : Schneckenmesser
 Picture 6C : Auger knives
 Illustration 6C : Couteaux

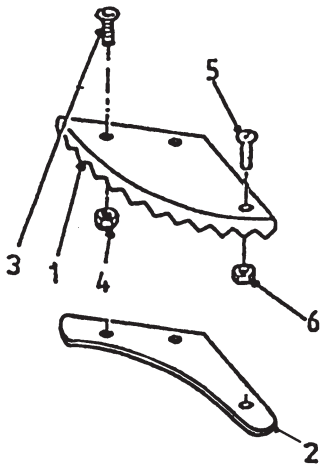
Standaard L=350



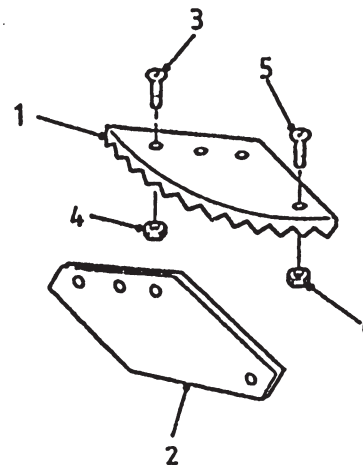
Standaard L=550



L=350 + TC



L=550 + TC



Bestelnummer
 Bestellnummer
 Ordernummer
 Num. a commander

Standaard

1	31841	1	
2	84121	2	M16 x 45
3	86216	2	M16

L=350 + TC

1	32354	1	TC
2	29291	1	
3	84188	2	M16 x 55
4	86216	2	M16
5	84125	1	M8 x 25
6	86208	1	M8

L=550

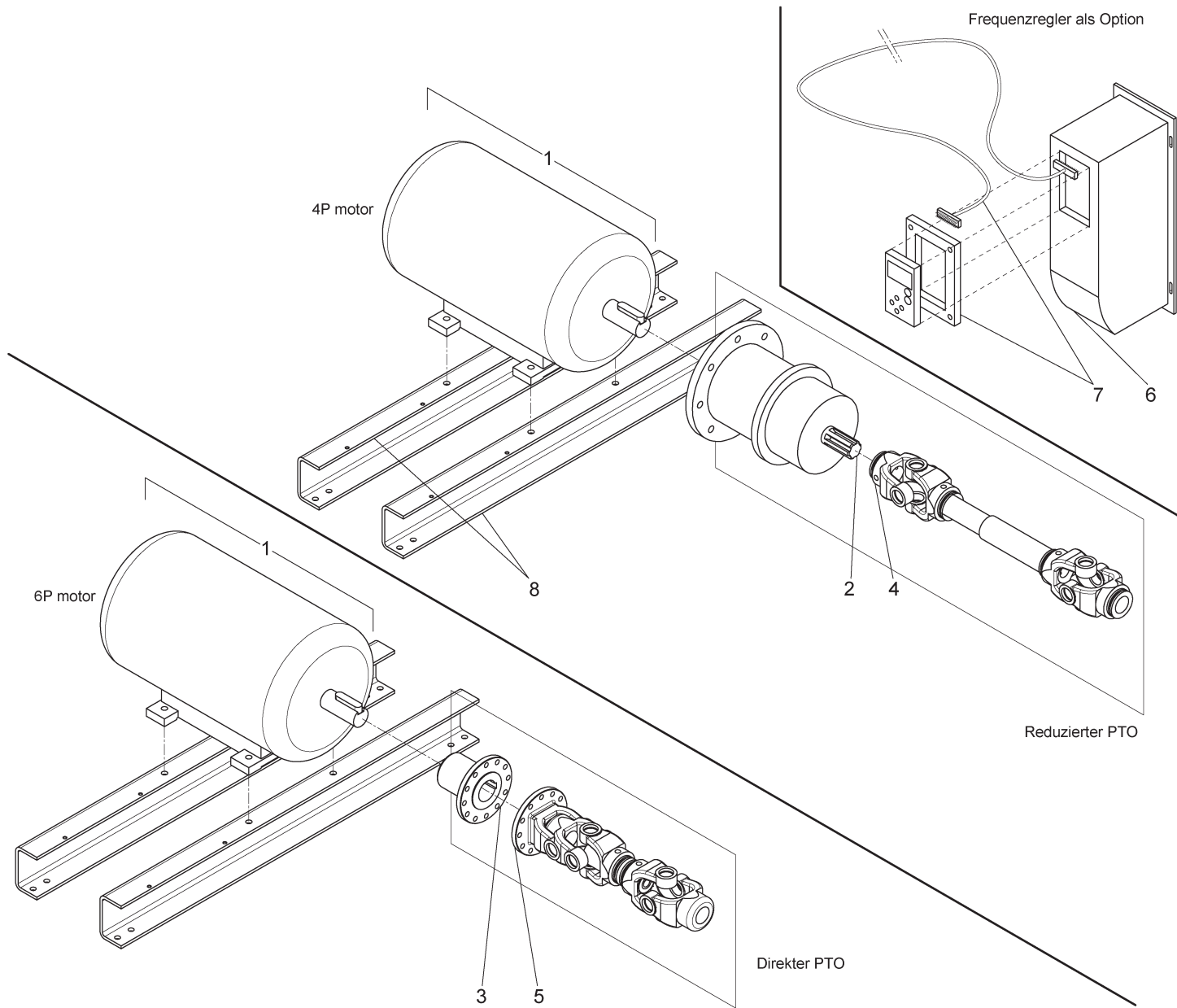
1	31639	1	
2	31640	1	
3	84188	3	M16 x 55
4	86216	3	M16
5	84125	1	M8 x 25
6	86208	1	M8

L=550 + TC

1	31639	1	TC
2	31640	1	
3	84188	3	M16 x 55
4	86216	3	M16
5	84125	1	M8 x 25
6	86208	1	M8

92211

Afbeelding 7A : Elektrische aandrijving
 Abbildung 7A : Elektrischer Antrieb
 Picture 7A : Electrical drive system
 Illustration 7A : Système d'entraînement électrique



93020F

Bestellnummer
 Bestellnummer
 Ordernummer
 Num. a commander

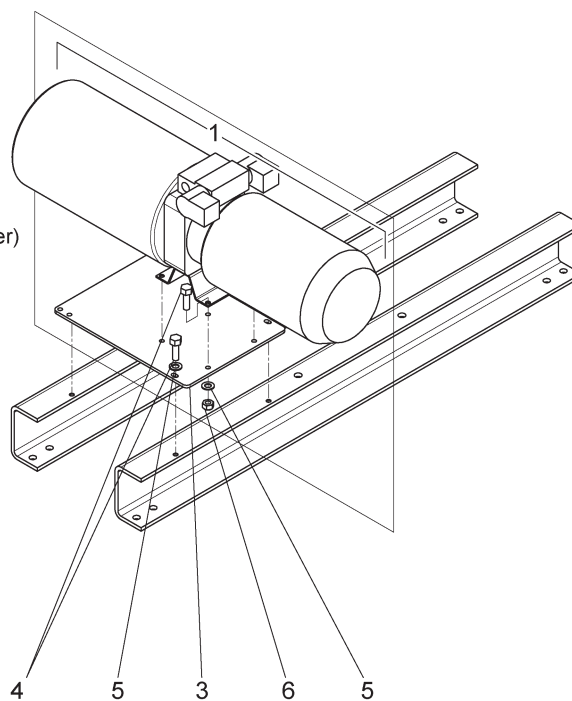
1A	98323	1	15 kW / 4-p / IEC160L
1B	98314	1	18.5 kW / 4-p / IEC180M
1C	98284	1	22 kW / 4-p / IEC180L
1D	98290	1	30 kW / 4-p / IEC200L
1E	98291	1	37 kW / 4-p / IEC225S
1F	98325	1	45 kW / 4-p / IEC225M
1G	98326	1	55 kW / 4-p / IEC250M
1H	98240	1	15 kW / 6-p / IEC180L
1I	98324	1	18.5 kW / 6-p / IEC200L
1J	98285	1	22 kW / 6-p / IEC200L
1K	98292	1	30 kW / 6-p / IEC225M
1L	98327	1	37 kW / 6-p / IEC250M
1M	98328	1	45 kW / 6-p / IEC280S
1N	98329	1	55 kW / 6-p / IEC280M
2A	94315	1	1 ³ / ₄ - 20 / IEC180ML
2B	94337	1	1 ³ / ₄ - 20 / IEC200L
2C	94344	1	1 ³ / ₄ - 20 / IEC225SM
2D	94435	1	1 ³ / ₄ - 20 / IEC250M
3	32487	1	12G/12S
4	94388	1	W2400 1 ³ / ₈ -6 / 1 ³ / ₄ -20
5	94390	1	W2400 1 ³ / ₈ -6 / Flange
6A	98315	1	Freq.ctrl. 18.5 kW
6B	98298	1	Freq.ctrl. 30 kW
7	98309	1	Cable and box
8A	43543	2	Solomix-1
8B	43148	2	Solomix-2

93020FL1

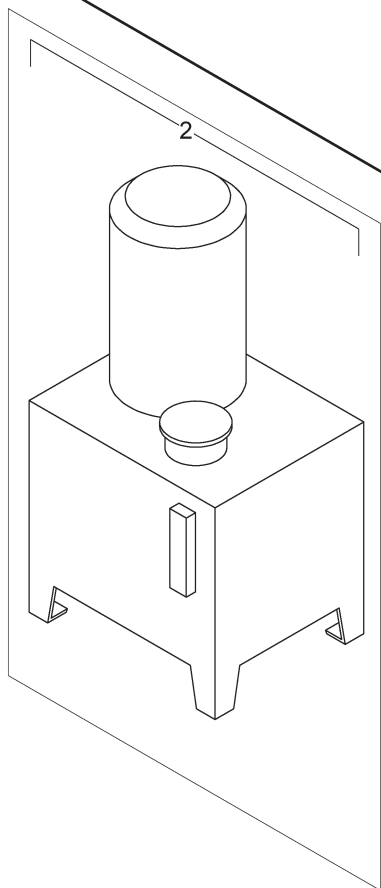
92211

Afbeelding 7B : Compact unit
Abbildung 7B : Kompakt Einheit
Picture 7B : Compact unit
Illustration 7B : Unité compacte

2.2 kW Kompakt Einheit (Dosierschieber)



7.5 / 10 kW Kompakt Einheit (Dosierschieber und Querbänder)

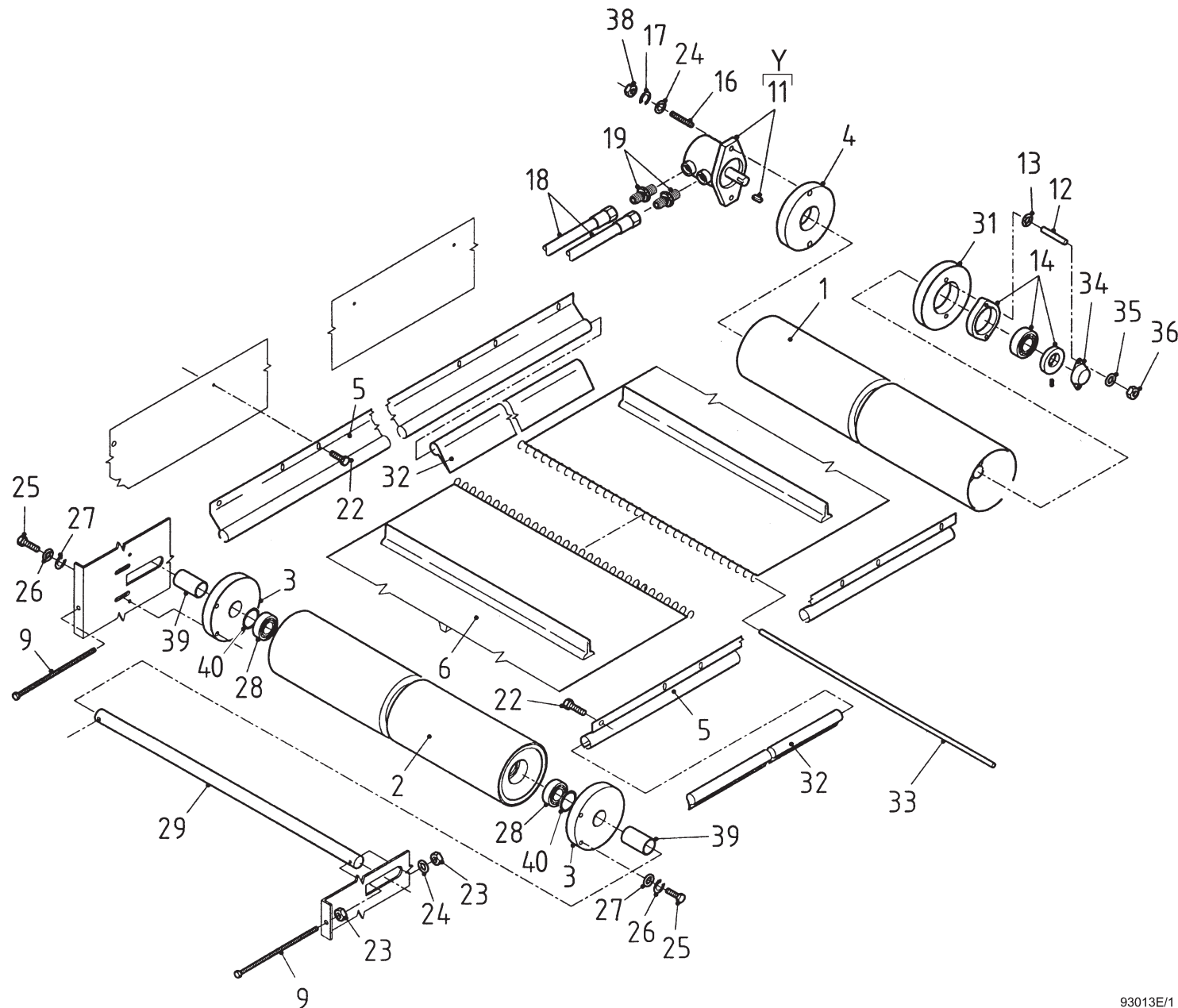


Bestellnummer
Bestellnummer
Ordernummer
Num. a commander

1	94319	1	Comp.unit 2.2 kW
2	94366	1	Comp.unit 7.5 kW
3	43151	1	
4	80826	8	M8 x 25
5	85108	8	M8
6	86208	4	M8

92211

Afbeelding 8 : Dwarsband
 Abbildung 8 : Querförderband
 Picture 8 : Side conveyor
 Illustration 8 : Tapis latéral

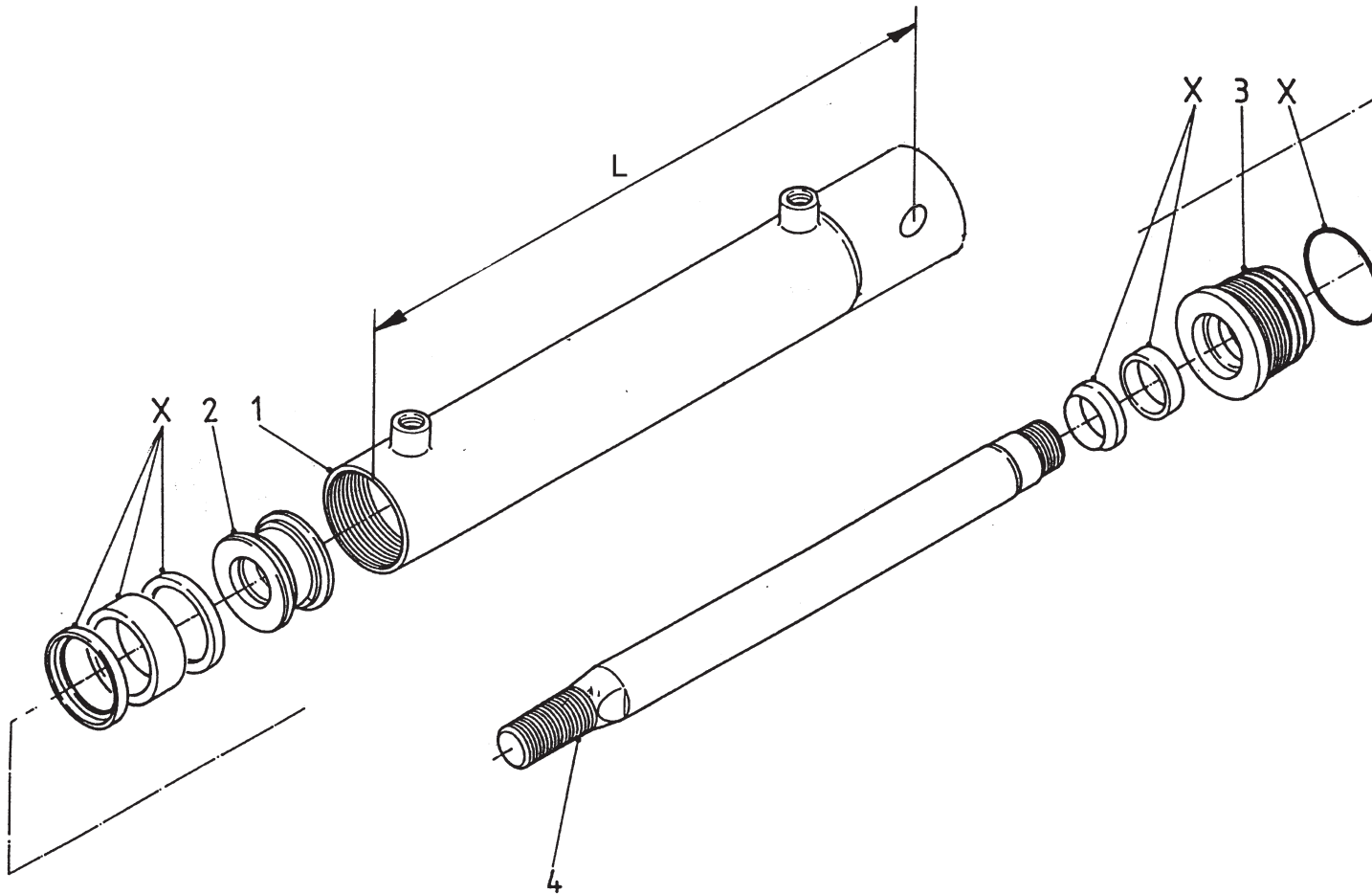


Bestellnummer
 Bestellnummer
 Ordernummer
 Num. a commander

1	11940	1
2	11979	1
3	60290	2
4	31709	1
5	90274	2 L = 2280
6	60294	1 L = 4570
9	81223	2 M12 x 180
11A	51130	1 Danfoss OMP 125
11B	51129	1 SAM BG 130
11C	51083	1 Bucher 127
12	84176	2 M8 x 60
13	85112	2 M8
14	70084	1
16	84108	2 M12 x 60
17	85112	2 M12
18	W50846	2 1/2" 3250RH
19	X50117	2
22	84710	18 M6 x 12
23	86112	4 M12
24	85012	4 M12
25	81031	4 M10 x 30
26	85010	4 M10
27	85113	4 M10
28	70010	2
29	25200	1
31	32190	1
32	60216	2 L = 2280
33	25422	1
34	23304	1
35	85008	2 M8
36	86208	2 M8
38	86212	2 M12
39	25207	2 L = 53
40	87162	2 J = Ø62 x 2,0
Y1	05169	1 Danfoss
Y2	05358	1 Sam
Y3	05307	1 Bucher

92211

Afbeelding 9A : Doseerklapcilinders met vaste cilindersteun
 Abbildung 9A : Auswurfschieber Zylinder mit fester Zylinderstütze
 Picture 9A : Slide cylinders with fixed cylinder support
 Illustration 9A : Porte de dosage: cylindres hydraulique avec support fixe



93002K/1

Bestellnummer
 Bestellnummer
 Ordernummer
 Num. a commander

51174 H = 690 700 / 900

1	12548	1	L = 788
2	30860	1	
3	31460	1	
4	32045	1	
X	05309	1	

51154 H = 690 2-1200

1	12349	1	L = 798
2	30860	1	
3	31460	1	
4	31764	1	
X	05309	1	

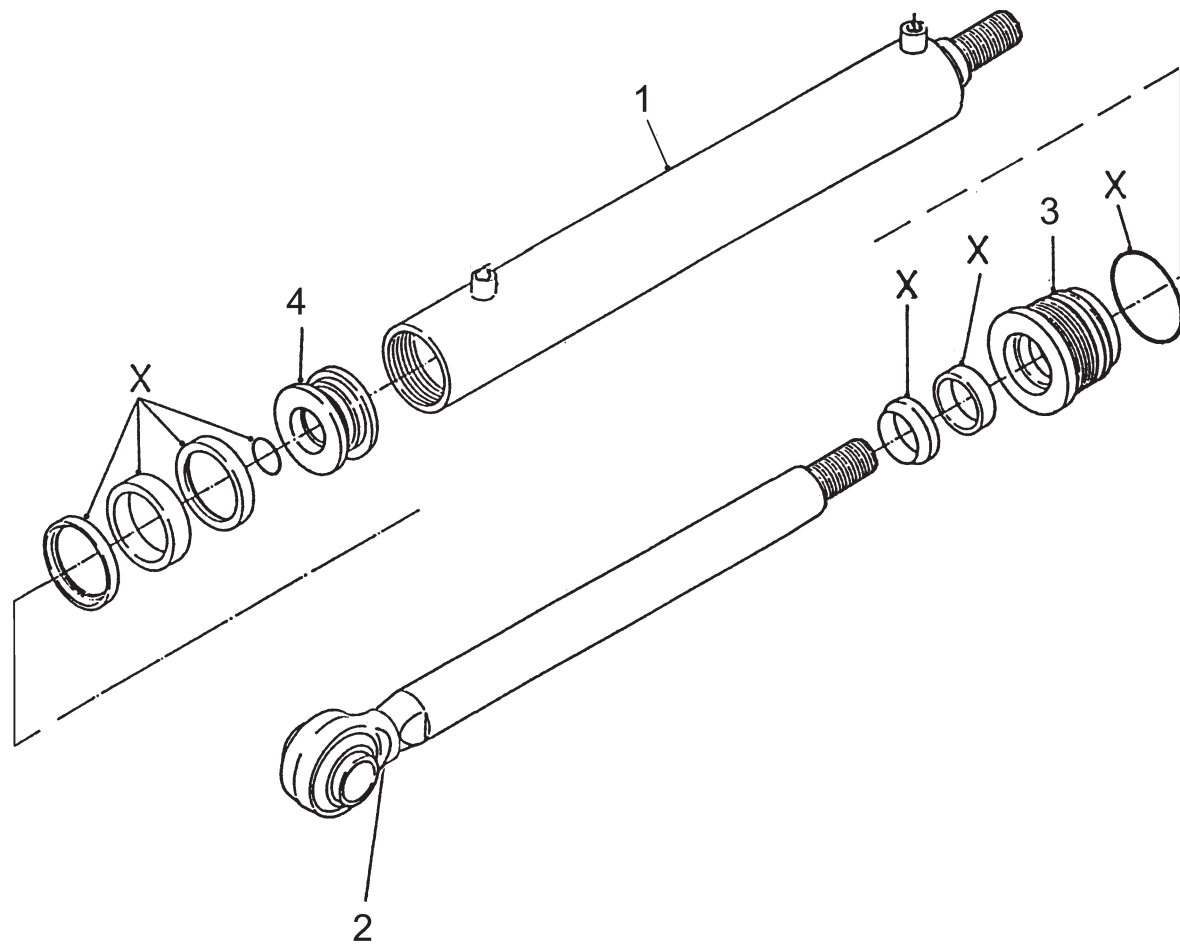
51062 H = 850 1-800 to 2-2400

1	11600	1	L = 958
2	30860	1	
3	31460	1	
4	31459	1	
X	05309	1	

93002KL4

92211

Afbeelding 9B : Doseerlepcilinders met losse cilindersteun
 Abbildung 9B : Auswurfschieber Zylinder mit demontierbarer Zylinderstütze
 Picture 9B : Slide cylinders with detachable cylinder support
 Illustration 9B : Porte de dosage: cylindres hydraulique avec support amovible



Bestelnummer
 Bestellnummer
 Ordernummer
 Num. a commander

51229 H = 690 700 / 800 / 900 / 2-1200

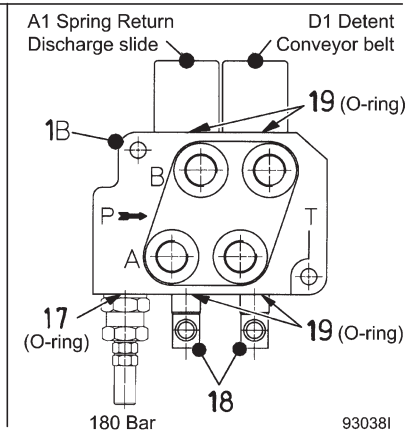
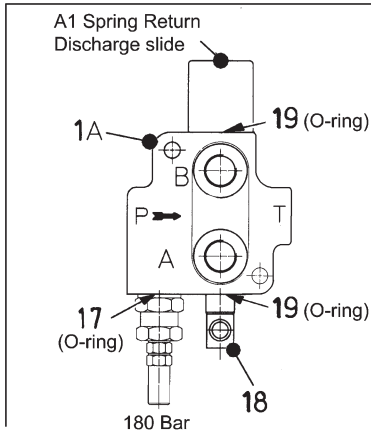
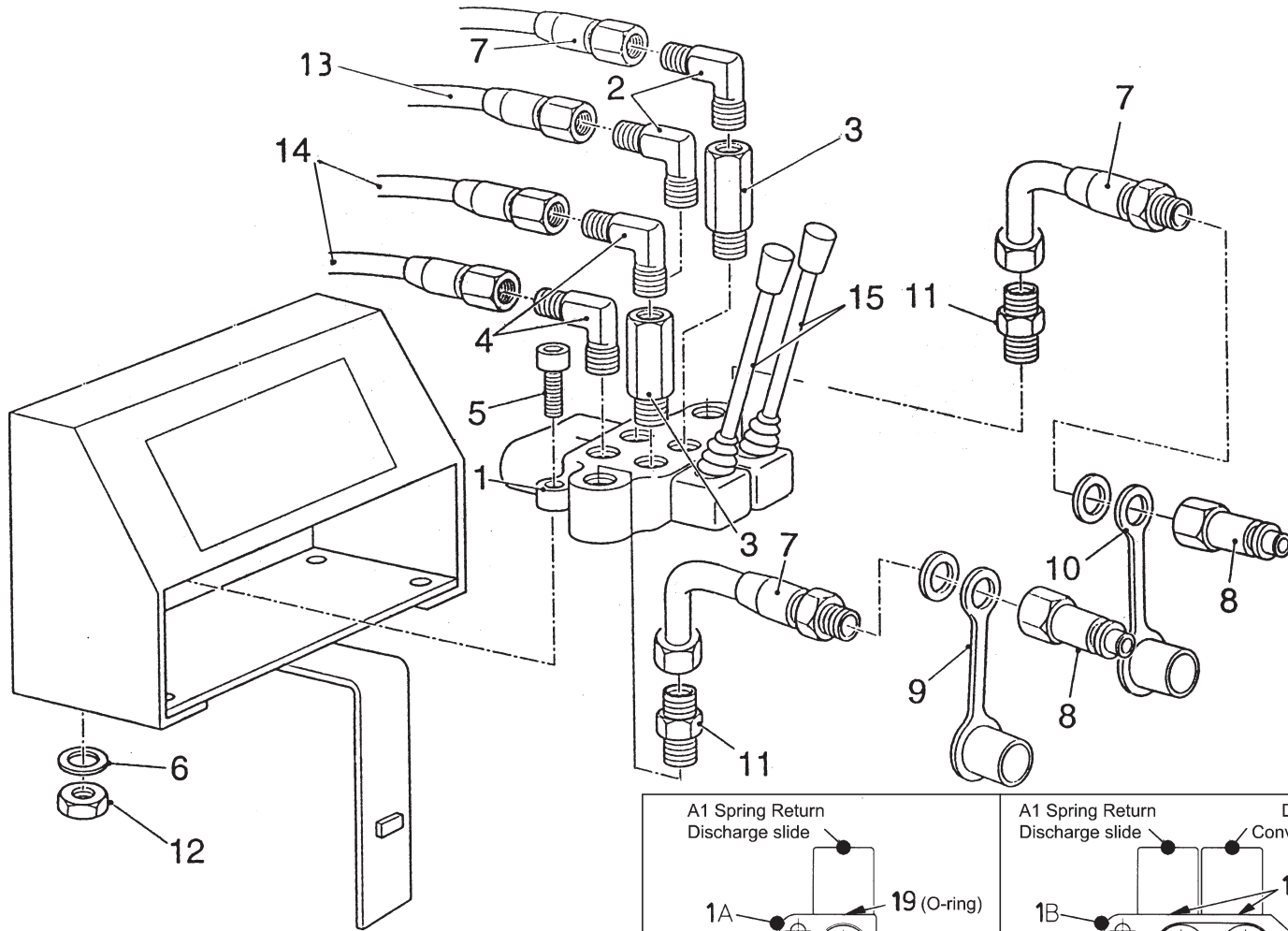
1	13545	1
2	13546	1
3	32407	1
4	32450	1
X	05516	1

51230 H = 860 1-1000 / 1-1200 / 1-1400

1	13550	1
2	13551	1
3	32407	1
4	32450	1
X	05516	1

92211

Afbeelding 10 : Mechanische bediening
 Abbildung 10 : Mechanische Fernbedienung
 Picture 10 : Mechanical remote control
 Illustration 10 : Commande mécanique



Bestelnummer
 Bestellnummer
 Ordernummer
 Num. a commander

1A	53081	1	1H
1B	53251	1	2H
2	X50101	2	
3	50133	2	
4	X50103	2	
5	84419	2	M8 x 45
6	85108	2	M8
7	W50643	3	1/2" 2500RH
8	53301	2	
9	53303	1	Red
10	53326	1	Blue
11	X50102	2	
12	86208	2	M8
13	W50668	1	1/2" 4000RH
14	W50685	2	1/4" 2400RH
15	53268	2	
17	78128	6	Ø17.86 x 2.62/70
18	53430	2	
19	78126	4	Ø15.08 x 2.62/70

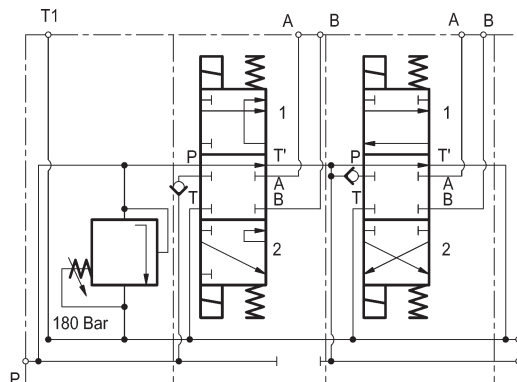
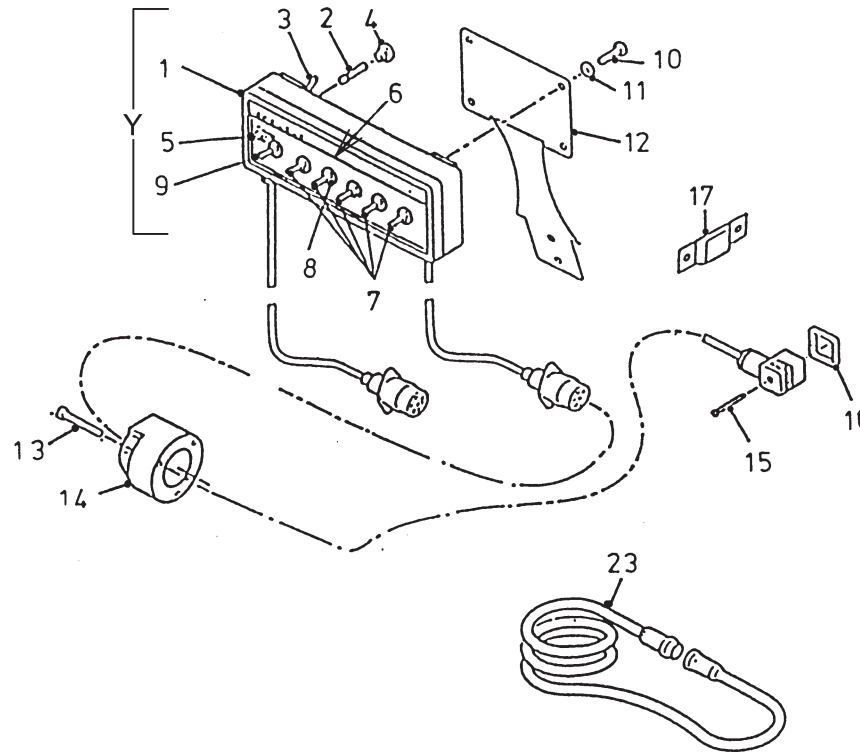
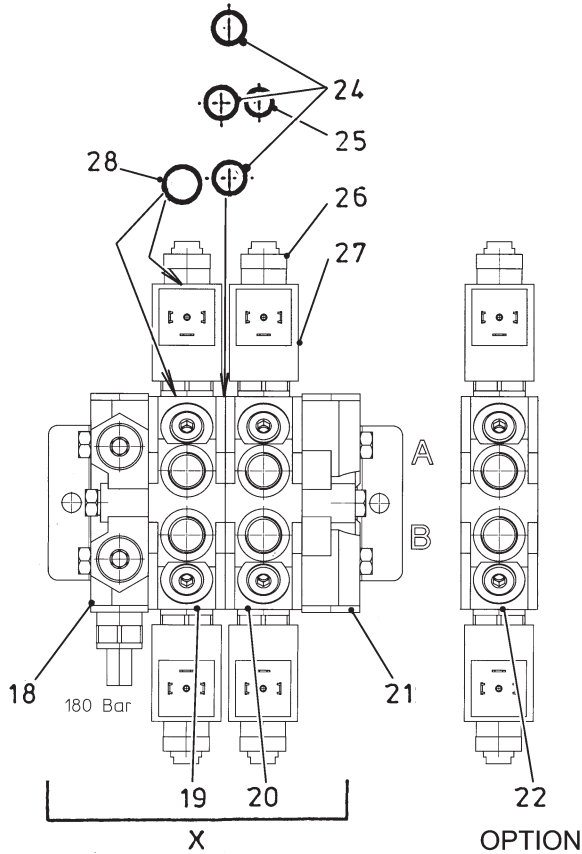
92211

- Afbeelding 11A : Elektrische bediening, standaard regeling
- Abbildung 11A : Elektrische Fernbedienung, standard Einstellung
- Picture 11A : Electrical remote control, standard regulation
- Illustration 11A : Commande électrique, réglage standard

Spezifikationen Gleichrichter:



In 220V ac
Aus 1,2A - 12V

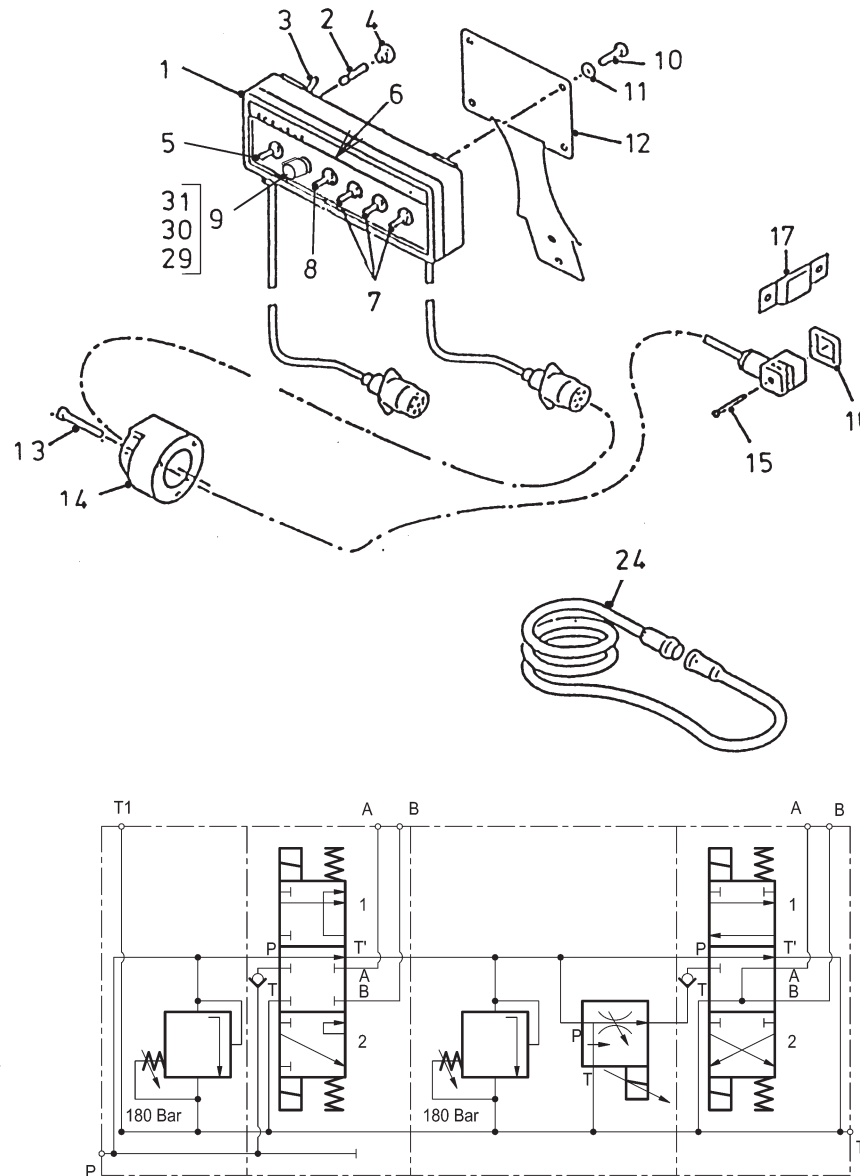
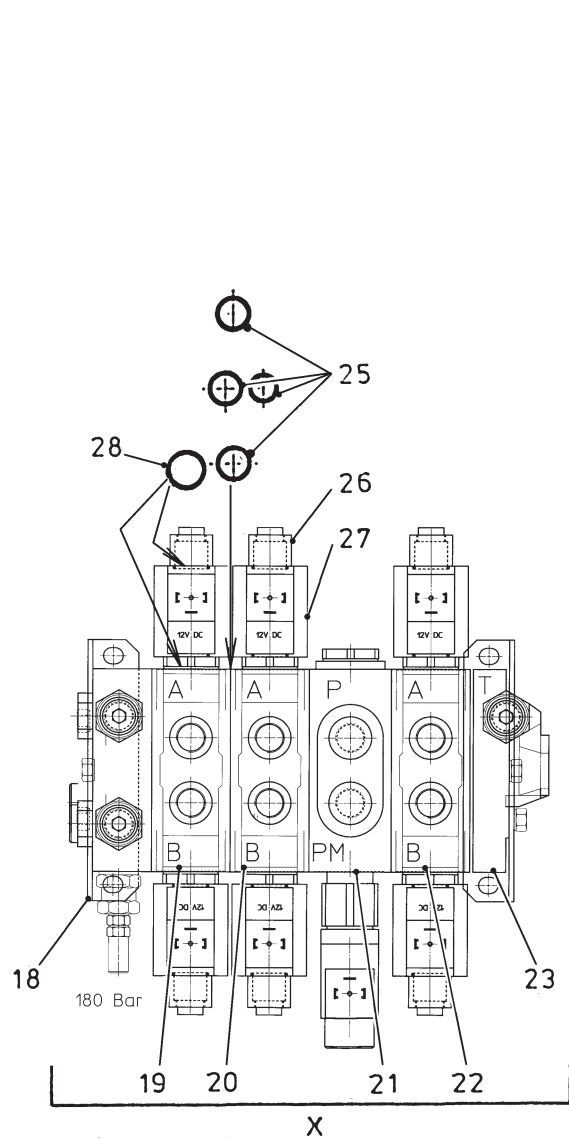


Bestellnummer
Bestellnummer
Ordernummer
Num. a commander

1	98195	1	
2	98053	1	
3	98054	1	
4	98052	1	
5	98051	1	
6	91015	1	
7	98113	5	
8	98056	6	
9	98206	1	
10	84717	4	M6 x 12
11	85106	4	M6
12	40420	1	
13	84476	3	M5 x 30
14	98147	1	
15	84711	4	M3 x 35
16	60180	4	
17	24644	1	
18	53404	1	HDS 11
19	53408	1	HDS 11
20	53425	1	HDS 11
21	53407	1	HDS 11
22	53405	1	HDS 11
23	98150	1	
24	78143	9	Ø17.12 x 2.62/90
25	78144	3	Ø10.77 x 2.62/90
26	98220	4	HDS 11
27	98200	4	HDS 11
28	78134	8	Ø15.60 x 1.78/70
X	53426	1	HDS 11/2
Y	98194	1	Complete

92211

- Afbeelding 11B : Elektrische bediening, proportionaal regeling
 Abbildung 11B : Elektrische Fernbedienung, Proportionalbetätigung
 Picture 11B : Electrical remote control, proportional regulation
 Illustration 11B : Commande électrique, réglage proportionnal

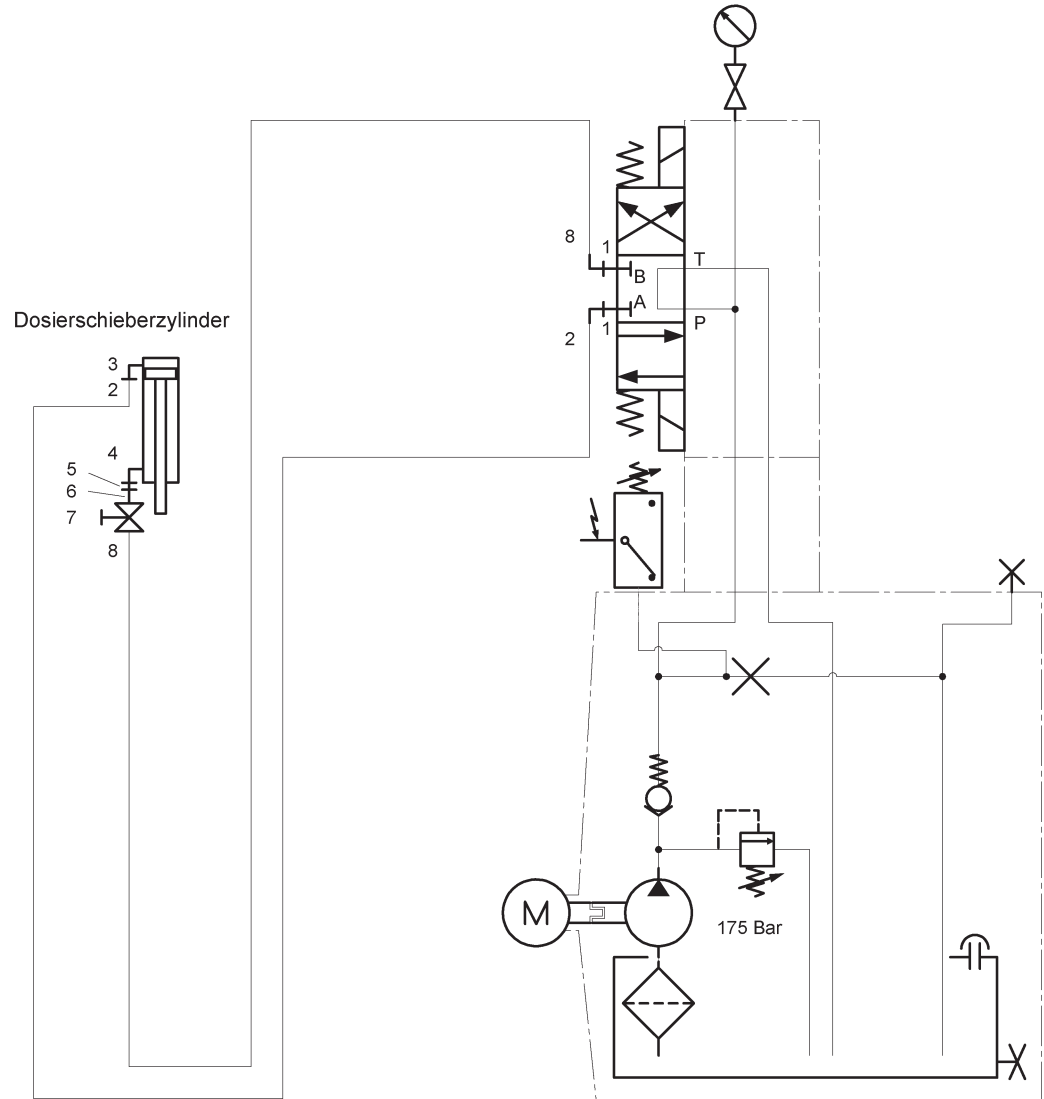


Bestellnummer
 Bestellnummer
 Ordernummer
 Num. a commander

1	98276	1	Control box complete
2	98053	1	
3	98054	1	
4	98052	1	
5	98061	1	
6	91390	1	
7	98113	3	
8	98206	1	
9	98182	1	Prop. unit complete
10	84717	4	M6 x 12
11	85106	4	M6
12	40420	1	
13	84476	3	M5 x 30
14	98147	1	
15	84711	4	M3 x 35
16	60180	4	
17	24644	1	
18	53283	1	HDS 15
19	53280	1	HDS 15
20	53277	1	HDS 15
21	53419	1	HDS 15
22	53512	1	HDS 15
23	53284	1	HDS 15
24	98150	1	
25	05247	5	
26	98222	6	HDS 15
27	98201	6	HDS 15
28	78062	12	Ø18.77 x 1.78/70
29	98183	1	Knob
30	98209	1	Pot. meter
31	98208	1	Print. circuit
X	53519	1	HDS 15/3

92211

Afbeelding 12 : Slangenschema elektrische bediening, 2.2 kW compact unit
 Abbildung 12 : Hydraulik Plan elektrische Fernbedienung, 2.2 kW Kompakt Einheit
 Picture 12 : Hydraulics electrical remote control, 2.2 kW compact unit
 Illustration 12 : Commande électrique: système hydraulique, 2,2 kW unité compacte

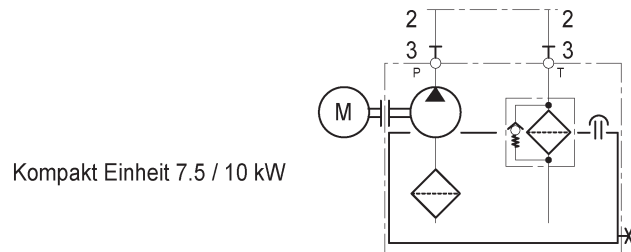
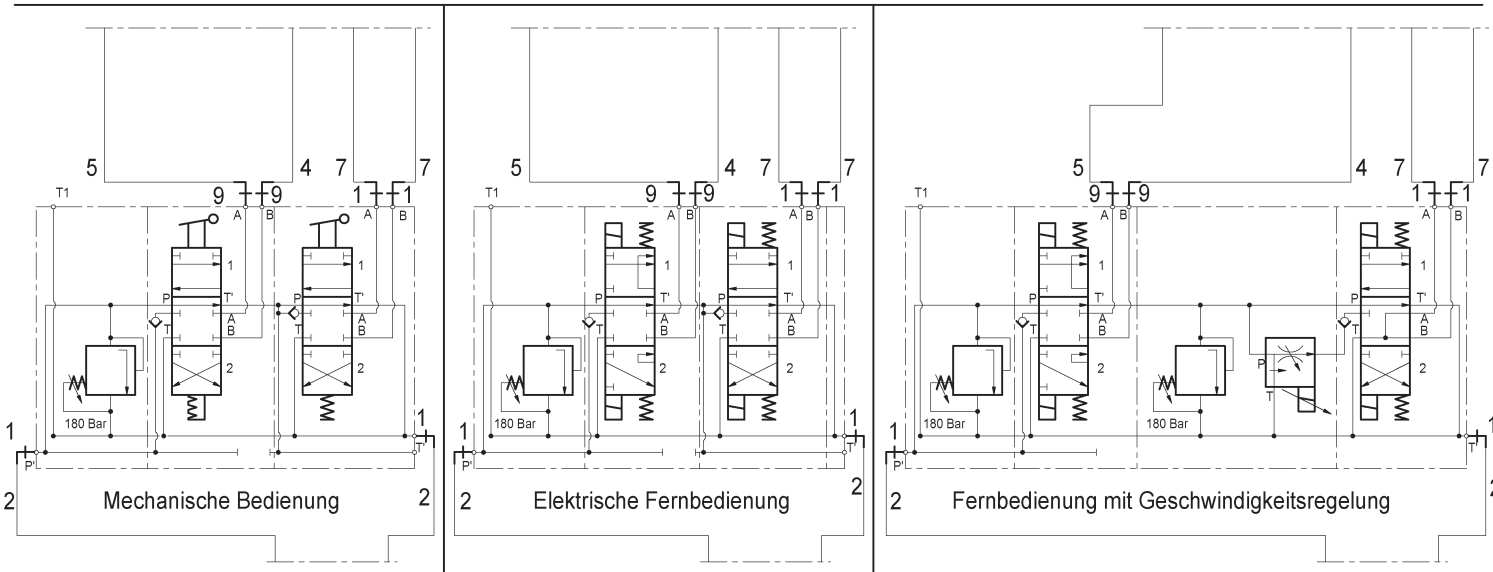
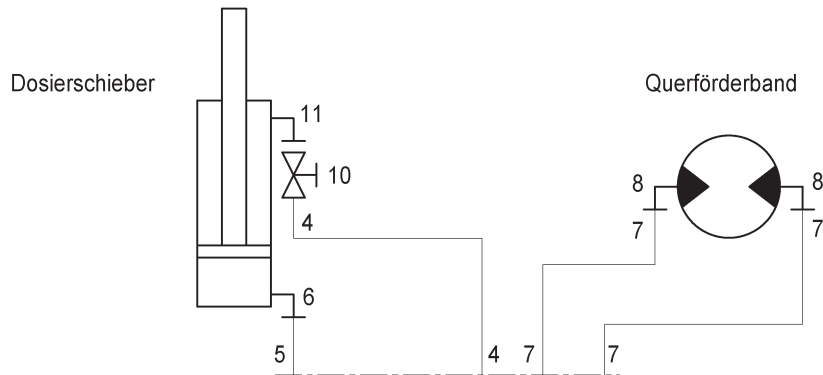


Bestelnummer
 Bestellnummer
 Ordernumber
 Num. a commander

1	50124	2
2	W50700	1 1/4" 1800RH
3	X50107	3
4	50107	1
5	52654	1 L=40
6	50135	1
7	51027	1
8	W50650	1 1/4" 1000RH

92211

- Afbeelding 13 : Slangenschema mechanische en elektrische bediening, 7.5 / 10 kW compact unit
 Abbildung 13 : Hydraulik Plan mechanische und elektrische Fernbedienung, 7.5 / 10 kW Compact Einheit
 Picture 13 : Hydraulics mechanical and electrical remote control, 7.5 / 10 kW compact unit
 Illustration 13 : Commande mécanique et électrique: système hydraulique, 7.5 / 10 kW unité compacte

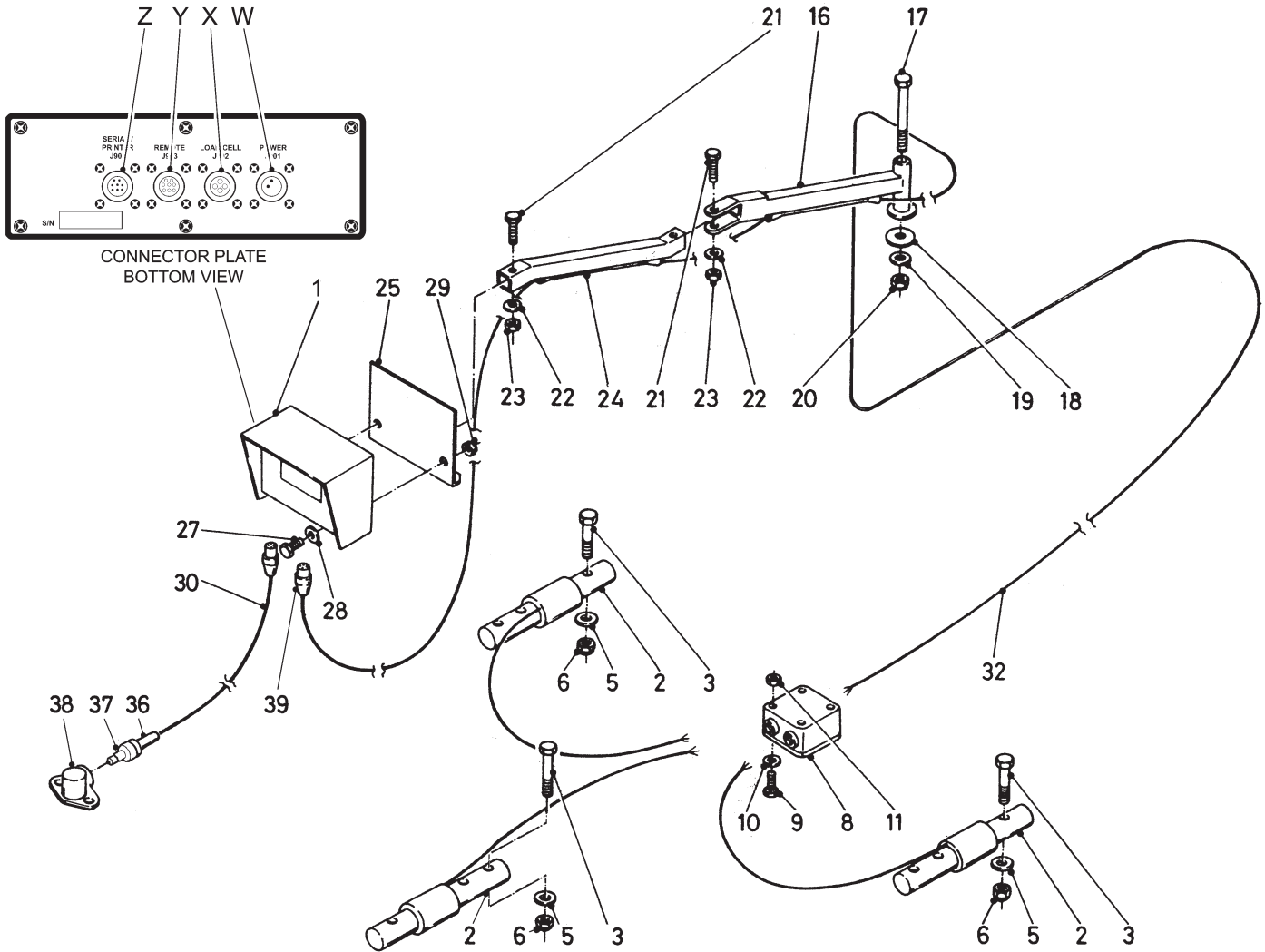


Bestellnummer
 Bestellnummer
 Ordernummer
 Num. a commander

1	X50102	4
2	W50726	2 1/2" 2000RH
3	50124	2
4	W50650	1 1/4" 1000RH
5	W50700	1 1/4" 1800RH
6	X50335	1
7	W50643	2 1/2" 2500RH
8	X50123	2 1/2" 2500RH
9	X50114	2
10	51027	1
11	50335	1

92211

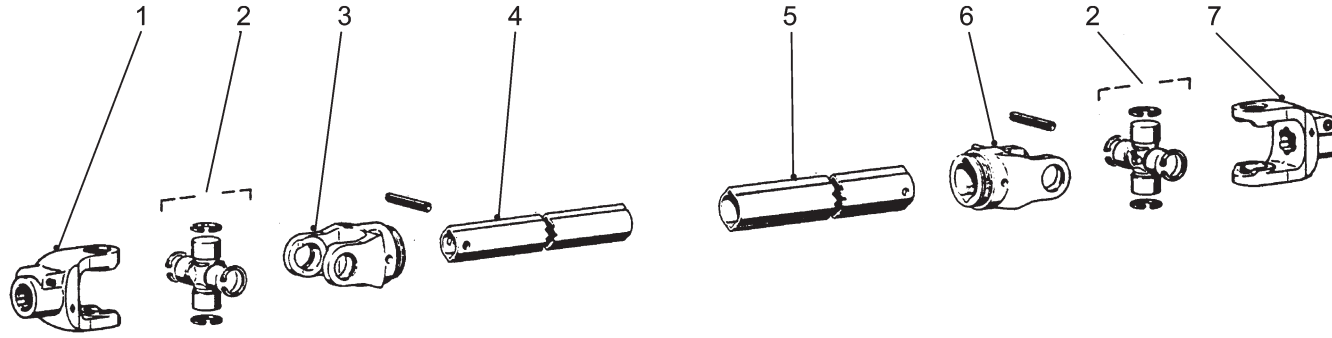
Afbeelding 14 : Elektronisch weegstelsel 700 - 2400
 Abbildung 14 : Elektronische Waage 700 - 2400
 Picture 14 : Electronic weighing system 700 - 2400
 Illustration 14 : Pesée électronique 700 - 2400



Bestellnummer	Bestellnummer	Ordernummer	Num. a commander
1A	94007	1	EZ2000
1B	90977	1	EZ2000V
1C	94028	1	EZ2000 R/S
1D	94029	1	EZ2000V R/S
1E	94075	1	EZ3200
1F	94076	1	EZ3200V
1G	94077	1	EZ3200 R/S
1H	94078	1	EZ3200V R/S
2	90743	3	Ø54
3	82013	3	M20 x 130 12.9
4	82014	1	M20 x 140 12.9
5	85020	3	M20
6	86220	3	M20
8	90482	1	Box + cable complete
9	84445	4	M5 x 20
10	85105	4	M5
11	86205	4	M5
16	12037	1	
17	81653	1	M16 x 150
18	60298	1	
19	85116	1	M16
20	86216	1	M16
21	81060	2	M10 x 60
22	85110	2	M10
23	86210	2	M10
24	12036	1	
25	12038	1	
27	80621	2	M6 x 20
28	85106	2	M6
29	86206	2	M6
30	90483	1	L=3000
32	90719	1	L=5000
36	98239	1	
37	98238	1	
38	98237	1	
39	98218	1	
W	05389	1	J901
X	05390	1	J902
Y	05510	1	J903
Z	05511	1	J904

92211

Afbeelding 15 : Aftakas
 Abbildung 15 : Gelenkwelle
 Picture 15 : PTO shaft
 Illustration 15 : Arbre de prise de force



93009L

Bestelnummer
 Bestellnummer
 Ordernummer
 Num. a commander

94097/94186/94388 L=1050/1310/730 W2400

1	90730	2	1 ³ / ₈ - 6
2	90729	2	
3	94231	1	
4	90958	1	
5	90959	1	
6	94232	1	
7A	90730	1	1 ³ / ₈ - 6 94097 / 94186
7B	90801	1	1 ³ / ₄ - 20 94388

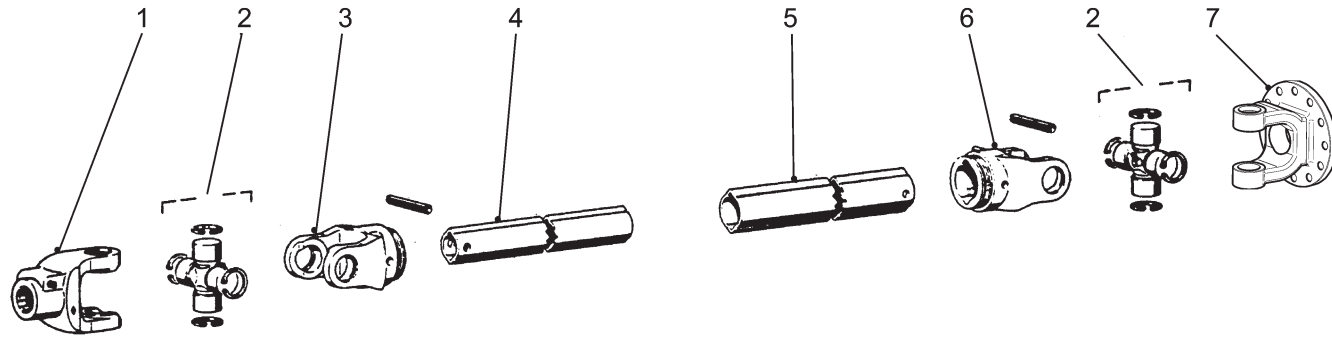
93009LL1

94390 L=800 W2400

1	90730	1	1 ³ / ₈ - 6
2	90729	2	
3	94231	1	
4	90958	1	
5	90959	1	
6	94232	1	
7	94444	1	12 Gts / St

93008L

93008LL1





Hinmanweg 19
7575 BE Oldenzaal - Holland
Postbus 134
7570 AC Oldenzaal - Holland

e-mail: info@trioliet.nl
<http://www.trioliet.nl>

Tel.: 0541 - 57 21 21 / (+) 31 - 541 - 57 21 21
Fax: 0541 - 57 21 25 / (+) 31 - 541 - 57 21 25

Voor onderdelen / Für Ersatzteile / For spare parts / pour pièces de réchange

Tel.: 0541 - 57 21 36 / (+) 31 - 541 - 57 21 36
Fax: 0541 - 57 21 40 / (+) 31 - 541 - 57 21 40