

Trioliet Mullos

Zelfladende mengdoseerwagen

Selbstladender Futter-, Misch- und Verteilwagen

Self loading Feeder Mixer

Désileuse Mélangeuse

Triomix S-2 1200/1600



Onderdelenlijst/Ersatzteilliste/Spare parts list/Liste de Pièces de Rechange

Bestelnummer/Bestellnummer/Ordernumber/Numéro de commande 92197/2

Geldig vanaf productieserie nr./Gültig ab/Valid from Prod. Series No.: 01

A Partir du Série de production No.: 01

INHOUDSOPGAVE

Afb.	1	Stickers
	2	Dissel
	3A	Tandemstel met hydraulisch remsysteem
	3B	Asstomp en rem 300x60 met wiel, Triomix S-2 1200
	3C	Asstomp en rem 300x90 met wiel, Triomix S-2 1600
	4	Frame
	5	Dwarsband
	6A	Aandrijving en mengvijzel, Triomix S-2 1200
	6B	Aandrijving en mengvijzel, Triomix S-2 1600
	6C	Vijzelmessen
	7	Stans-laadklep
	8	Doseerklapcilinder
	9A	Laadklapcilinder
	9B	Hoofdcilinder Triomix S-2 1200 → serie 02
	9C	Hoofdcilinder TMS-2 1200 → serie 03, TMS-2 1600 → serie 01
	10	Stroomdeler en counterbalance ventielen
	11	Gelijkloopbeveiligingssysteem
	12	Elektrische bediening
	13	Slangenschema elektrische bediening
	14	Hydraulisch schema
	15	Elektronisch weegsysteem
	16	Vertragingskast
	17	Hydraulische bediening contrames
	18	Hydraulische bediening steunpoot
	19	Verlichtingsset
	20	Pneumatisch remsysteem
	21	Elektrische bedieningskast en ventilaansluitschema
	22A	Aftakas Triomix S-2 1200
	22B	Aftakas Triomix S-2 1600

INHALTVERZEICHNIS

Abb.	1	Aufkleber
	2	Deichsel
	3A	Tandemfahrgestell mit hydraulische Bremsanlage
	3B	Laufachsstummel und Bremse 300x60 mit rad, Triomix S-2 1200
	3C	Laufachsstummel und Bremse 300x90 mit rad, Triomix S-2 1600
	4	Rahmen
	5	Querförderband
	6A	Schnecke und Antrieb, Triomix S-2 1200
	6B	Schnecke und Antrieb, Triomix S-2 1600
	6C	Schneckenmesser
	7	Stanz Ladeklappe
	8	Auswurfschieber Zylinder
	9A	Ladeklappe Zylinder
	9B	Hauptzylinder Triomix S-2 1200 → serie 02
	9C	Hauptzylinder TMS-2 1200 → serie 03, TMS-2 1600 → serie 01
	10	Stromteiler und Senkbremssventile
	11	Gleichlaufüberwachungsanlage
	12	Elektrische Fernbediening
	13	Hydraulik Plan elektrische Fernbediening
	14	Hydraulik Plan
	15	Elektronische Waage
	16	Reduziergetriebe
	17	Hydraulische Fernbediening Gegenschneide
	18	Hydraulische Fernbediening Stützfuß
	19	Beleuchtungssatz
	20	Druckluftbremse
	21	Elektrische Bedienungskasten und Ventilschaltplan
	22A	Gelenkwelle Triomix S-2 1200
	22B	Gelenkwelle Triomix S-2 1600

CONTENTS

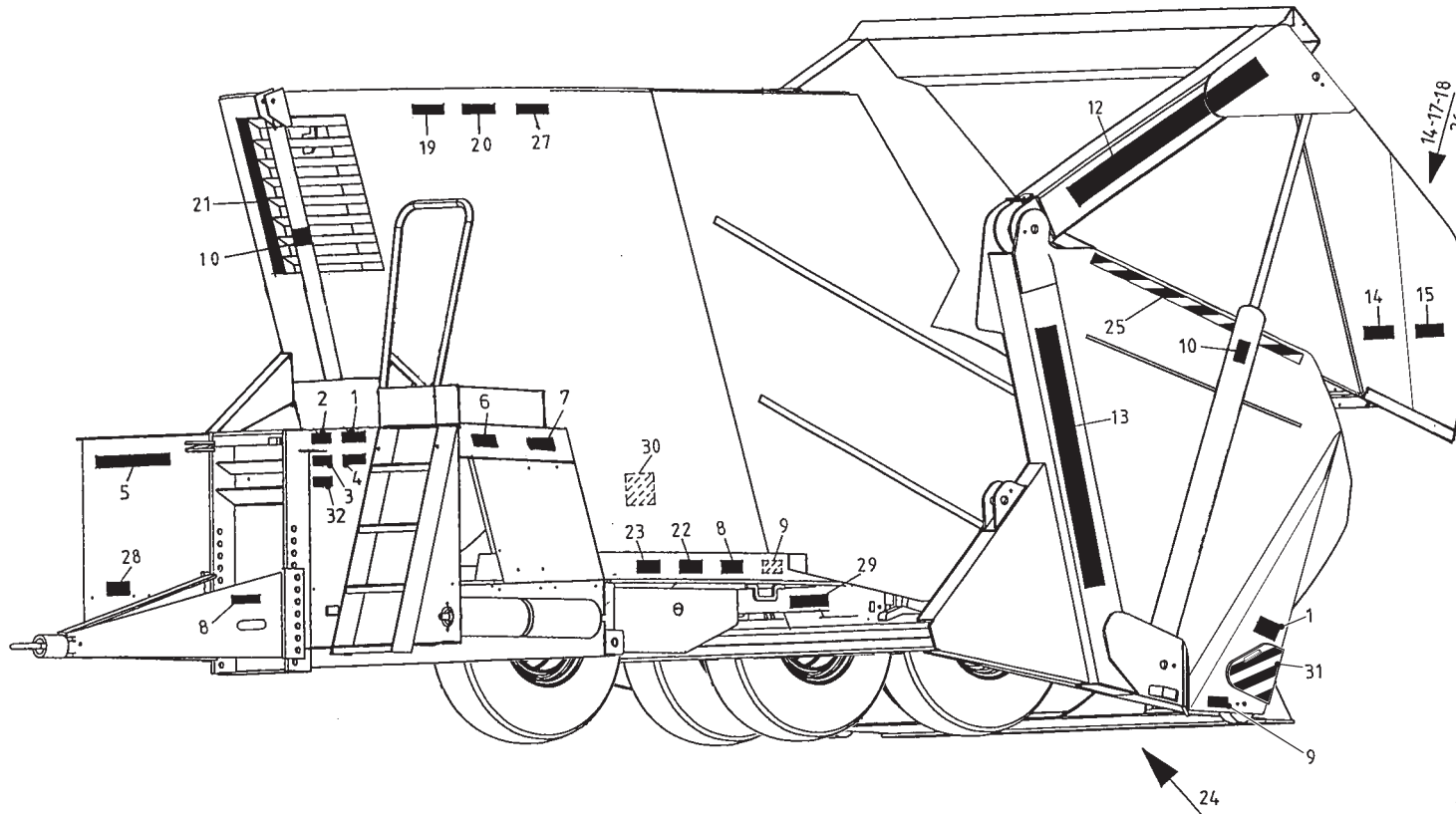
Pict.	1	Decals
	2	Drawbar
	3A	Balancer with hydraulic brake system
	3B	Braked stubaxle 300x60 with wheel, Triomix S-2 1200
	3C	Braked stubaxle 300x90 with wheel, Triomix S-2 1600
	4	Frame
	5	Side conveyor
	6A	Auger and drive system, Triomix S-2 1200
	6B	Auger and drive system, Triomix S-2 1600
	6C	Augerknives
	7	Cutting frame and loading platform
	8	Slide cylinder
	9A	Loading cylinder
	9B	Main cylinder Triomix S-2 1200 → serie 02
	9C	Main cylinder TMS-2 1200 → serie 03, TMS-2 1600 → serie 01
	10	Flow divider and counterbalance valves
	11	Parallel running safety system
	12	Electrical remote control
	13	Hydraulics electrical remote control
	14	Hydraulics scheme
	15	Electronic weighing system
	16	Reduction gearbox
	17	Hydraulic control counter knife
	18	Hydraulic control support
	19	Lighting set
	20	Air brake system
	21	Electrical control box and valve scheme
	22A	PTO shaft Triomix S-2 1200
	22B	PTO shaft Triomix S-2 1600

TABLE DES MATIÈRES

Illst.	1	Autocollants
	2	Timon
	3A	Essieux basculants avec freinage hydraulique
	3B	Demi-essieux avec frein 300x60 et roue, Triomix S-2 1200
	3C	Demi-essieux avec frein 300x90 et roue, Triomix S-2 1600
	4	Châssis
	5	Tapis latéral
	6A	Vis et système d'entraînement, Triomix S-2 1200
	6B	Vis et système d'entraînement, Triomix S-2 1600
	6C	Couteaux
	7	Système de coupe et chargement
	8	Porte de dosage: cylindre hydraulique
	9A	Cilindre de chargement
	9B	Cilindre principal Triomix S-2 1200 → série 02
	9C	Cilindre principal TMS-2 1200 → série 03, TMS-2 1600 → série 01
	10	Diviseur de débit et 'counterbalance' valves
	11	Système de contrôle du parallélisme
	12	Commande électrique
	13	Commande électrique: système hydraulique
	14	Système hydraulique
	15	Pesée électronique
	16	Boîte réductrice
	17	Contre couteaux: commande hydraulique
	18	Béguille: commande hydraulique
	19	Jeu d'éclairage
	20	Freinage pneumatique
	21	L'armoire de commande électrique et schéma de connection
	22A	Arbre de prise de force Triomix S-2 1200
	22B	Arbre de prise de force Triomix S-2 1600

92197/2

Afbeelding 1 : Stickers
 Abbildung 1 : Aufkleber
 Picture 1 : Decals
 Illustration 1 : Autocollants

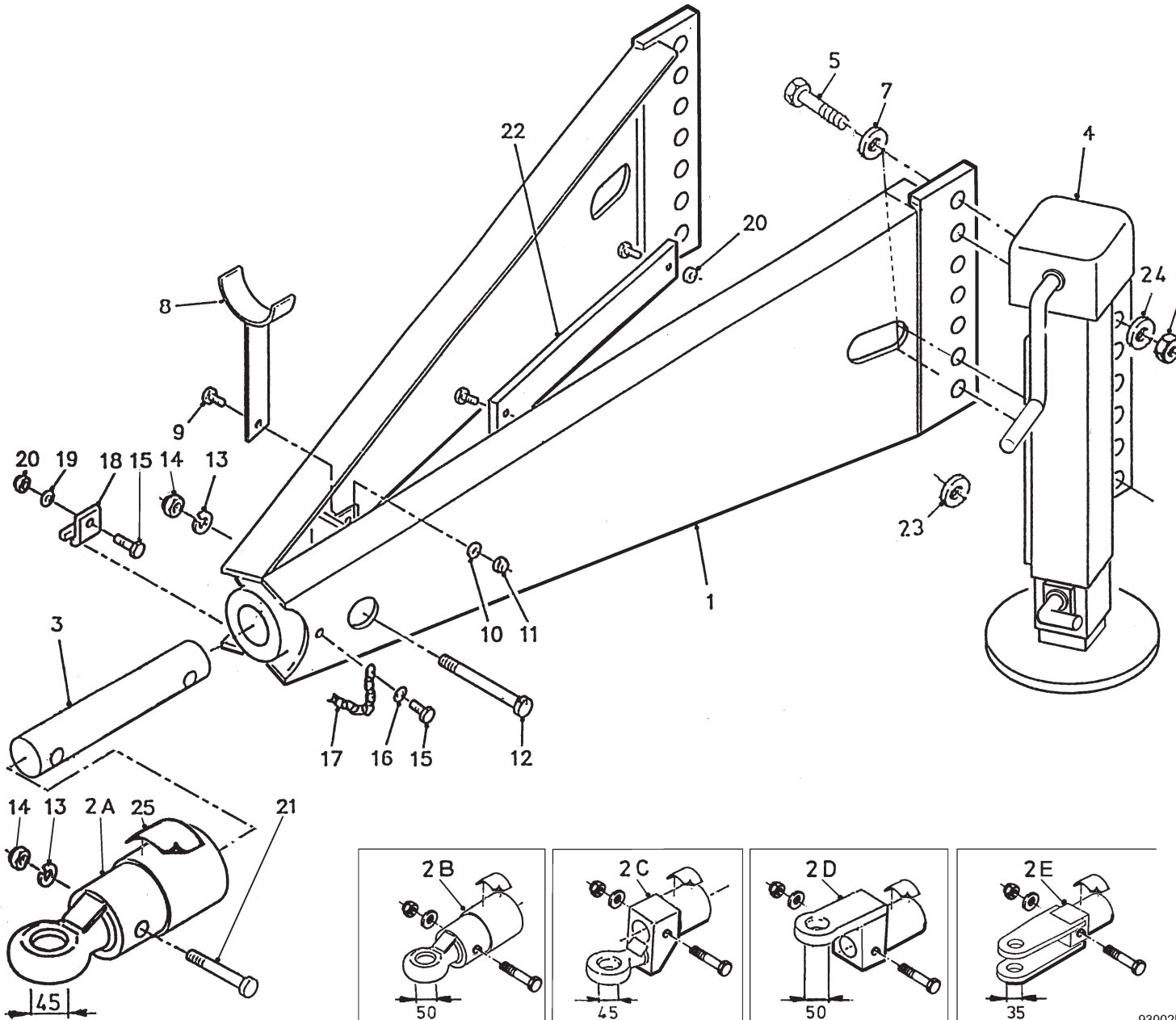


Bestelnummer
 Bestellnummer
 Ordernummer
 Num. a commander

1	91159	1	
2	91160	1	
3	91243	1	
4	91185	1	
5	91247	1	
6	91162	2	
7	91152	2	
8	91183	6	
9	91118	1	
10	91182	2	
11	91197	2	
12	91366	2	
13A	91364	2	Triomix S 1200
13B	91369	2	Triomix S 1600
14	91189	3	
15	91198	2	
17	91153	1	
18	91241	1	
19	91240	1	
20	91242	1	
21	91143	1	
22	91228	2	
23	91330	2	6.0 bar
24	91325	2	
25	91326	2	
26A	91331	1	8 kmh
26B	91130	1	25 kmh
27	91245	1	
28	91335	1	
29	91333	4	
30	91340	1	
31	91386	2	
32	91384	1	

92197/2

Afbeelding 2 : Dissel
 Abbildung 2 : Deichsel
 Picture 2 : Drawbar
 Illustration 2 : Timon

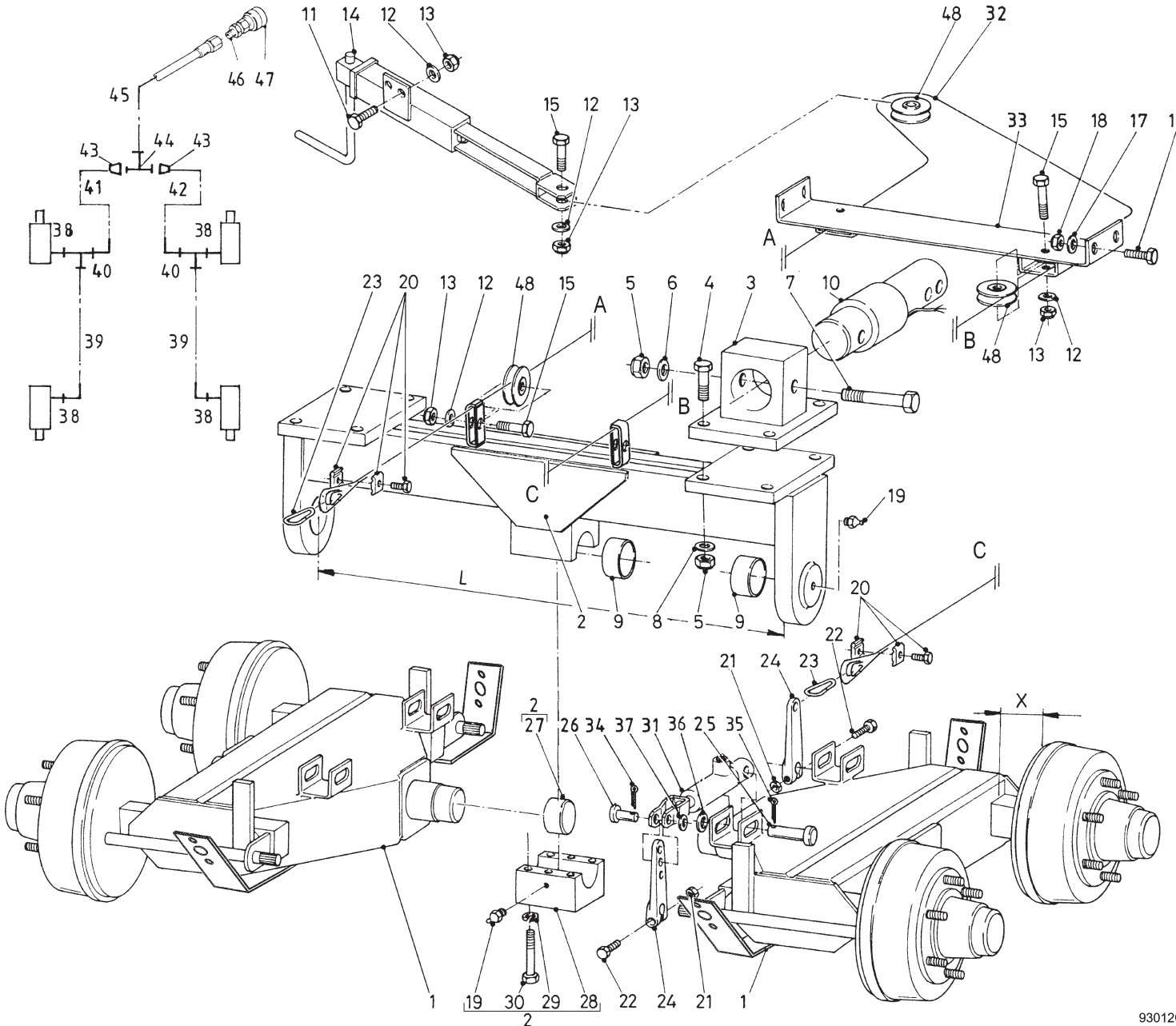


Bestelnummer
 Bestellnummer
 Ordernummer
 Num. a commander

1A	11942	1	1200
1B	12959	1	1600
2A	12229	1	Ø 45
2B	12560	1	Ø 50
2C	12230	1	Ø 45
2D	12612	1	Ø 50
2E	12953	1	Ø 35
3	31746	1	
4A	11946	1	1200 2 st. → 01
4B	13544	1	1200/1600 3 st. → 02
5	82409	5	M24 x 90 8.8
6	86224	5	M24
7	85124	5	M24
8	11709	1	
9	81026	1	M10 x 25
10	85110	1	M10
11	86210	1	M10
12	82013	1	M20 x 130 12.9
13	85020	2	M20
14	86220	2	M20
15	80831	2	M8 x 30
16	85109	1	M8
17	39136	1	
18	24528	1	
19	85108	1	M8
20	86208	3	M8
21	82014	1	M20 x 140 12.9
22	40431	1	
23	31627	1	
24	85024	5	M24
25	91216	1	

92197/2

Afbeelding 3A : Tandemstel met hydraulisch remsysteem
 Abbildung 3A : Tandemfahrgestell mit hydraulische Bremsanlage
 Picture 3A : Balancer with hydraulic brake system
 Illustration 3A : Essieux basculants avec freinage hydraulique



93012C

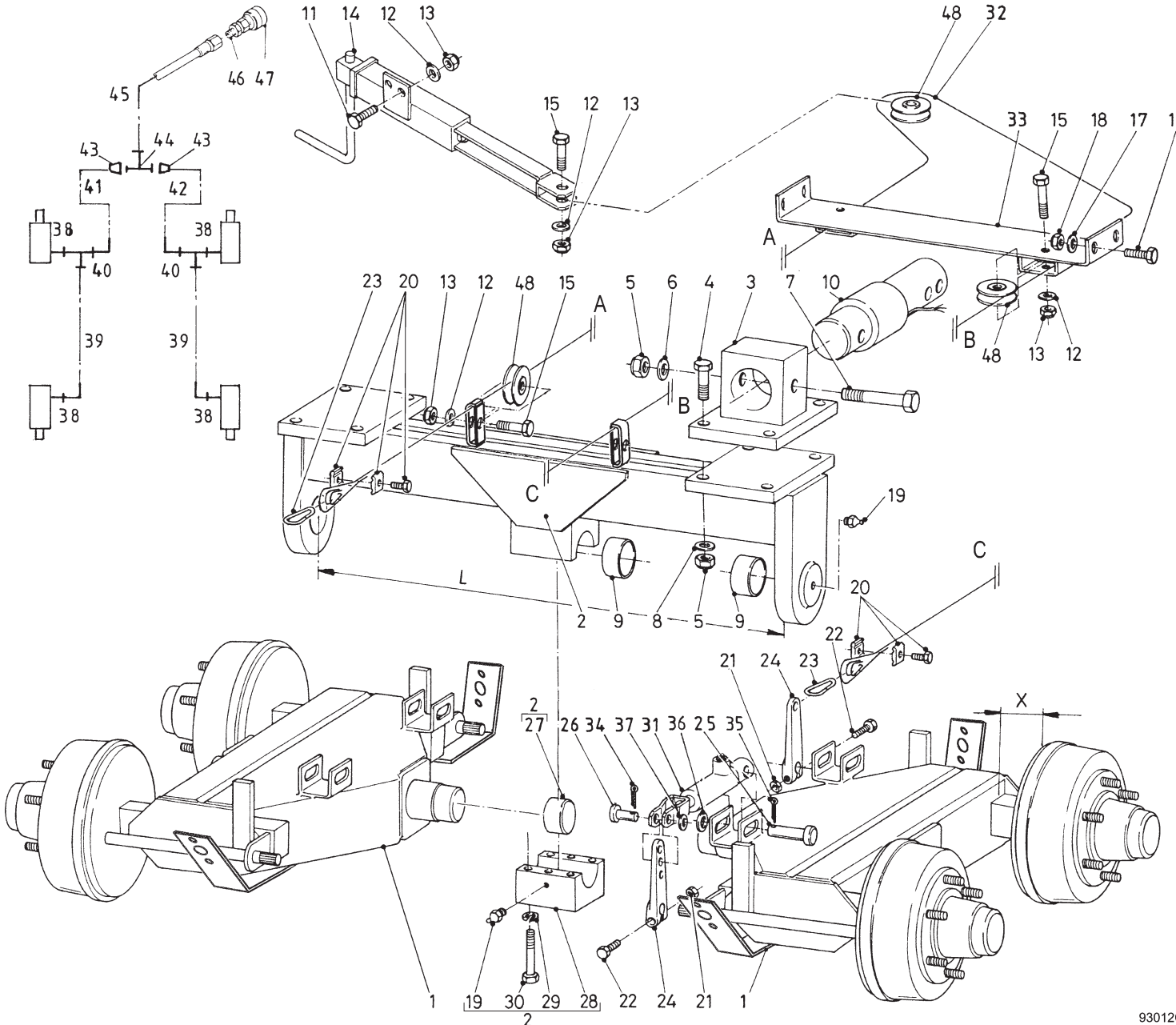
Bestelnummer
 Bestellnummer
 Ordernummer
 Num. a commander

1A	13111	2	X=162 1200
1B	13452	2	X=209 1600
2A	13120	1	L=900 1200
2B	13483	1	L=900 1600
3	12848	1	170 x 300
4	82408	8	M24 x 80 8.8
5	86124	8	M24
6	85124	12	M24
7	82418	4	M24 x 180 12.9
8	85024	8	M24
9	51897	4	
10	90841	2	Ø89
11	81031	2	M10 x 30
12	85110	7	M10
13	86210	7	M10
14	11768	1	
15	81055	5	M10 x 55
16	80831	4	M8 x 30
17	85108	4	M8
18	86208	4	M8
19	89505	4	M8 x 1
20	90430	2	
21	86110	4	M10
22	81060	4	M10 x 60
23	39139	2	
24	90507	4	
25	32202	4	
26	32203	4	
27	32193	1	
28	32187	1	
29	85016	6	M16
30	84494	6	M16 x 120 12.9
31	51110	4	
32	79078	1	L=5450
33	12841	1	
34	88225	4	Ø4 x 25
35	88239	4	Ø5 x 40
36	85120	4	M20
37	85114	4	M14
38	X50124	4	

93012CL1

92197/2

Afbeelding 3A : Tandemstel met hydraulisch remsysteem
 Abbildung 3A : Tandemfahrgestell mit hydraulische Bremsanlage
 Picture 3A : Balancer with hydraulic brake system
 Illustration 3A : Essieux basculants avec freinage hydraulique

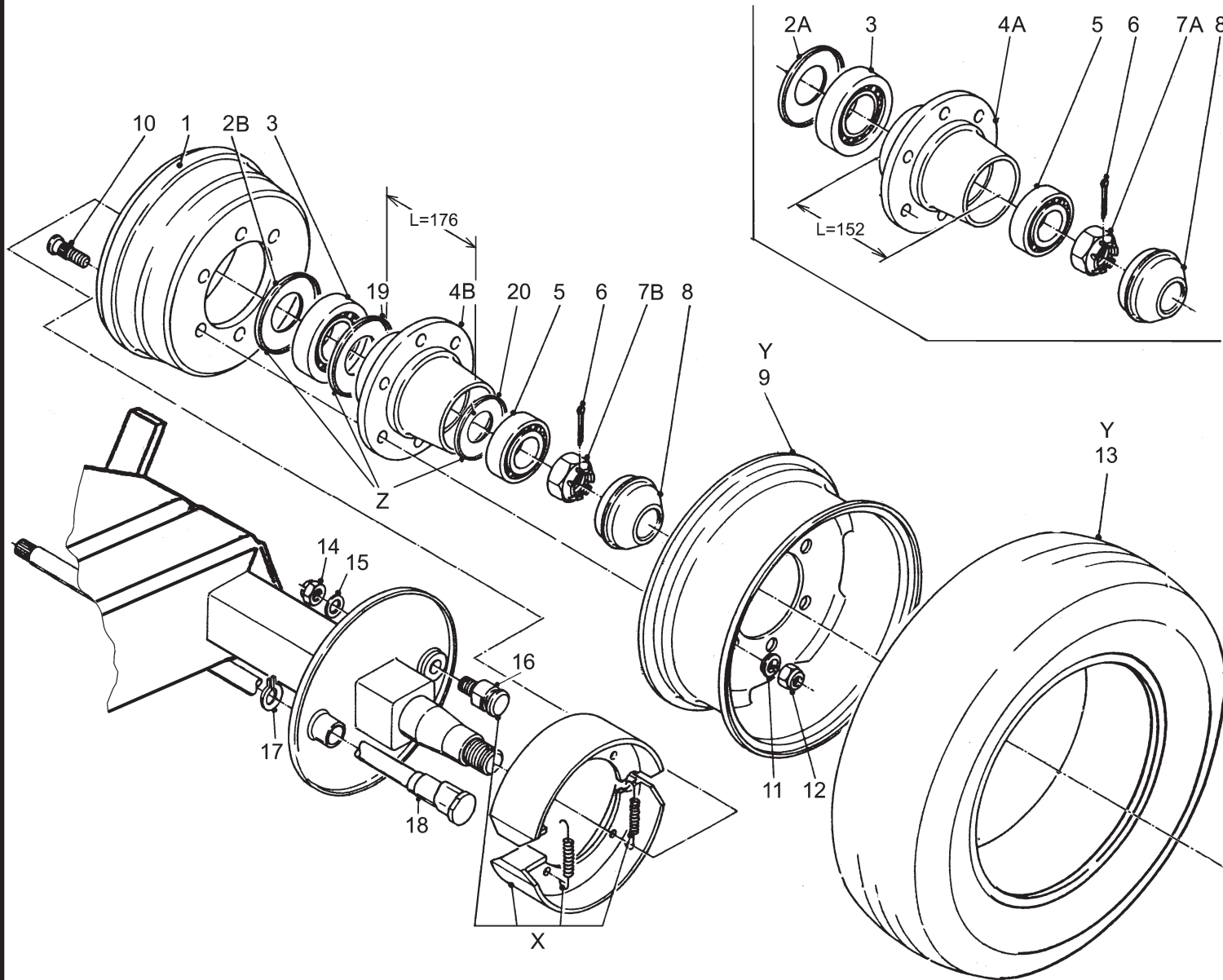


Bestelnummer
 Bestellnummer
 Ordernumber
 Num. a commander

39	W50763	2	1/4" 820 RH
40	X50354	2	
41	W50620	1	1/4" 600 RH
42	W50626	1	1/4" 460 RH
43	50157	2	
44	X50355	1	
45	W50873	1	3/8" 6000 RR
46	X50113	1	
47	53327	1	
48	31589	5	

92197/2

- Afbeelding 3B : Asstomp en rem 300x60 met wiel, Triomix S-2 1200
 Abbildung 3B : Laufachsstummel und Bremse 300x60 mit Rad, Triomix S-2 1200
 Picture 3B : Braked stubaxle 300x60 with wheel, Triomix S-2 1200
 Illustration 3B : Demi-essieux avec frein 300x60 et roue, Triomix S-2 1200

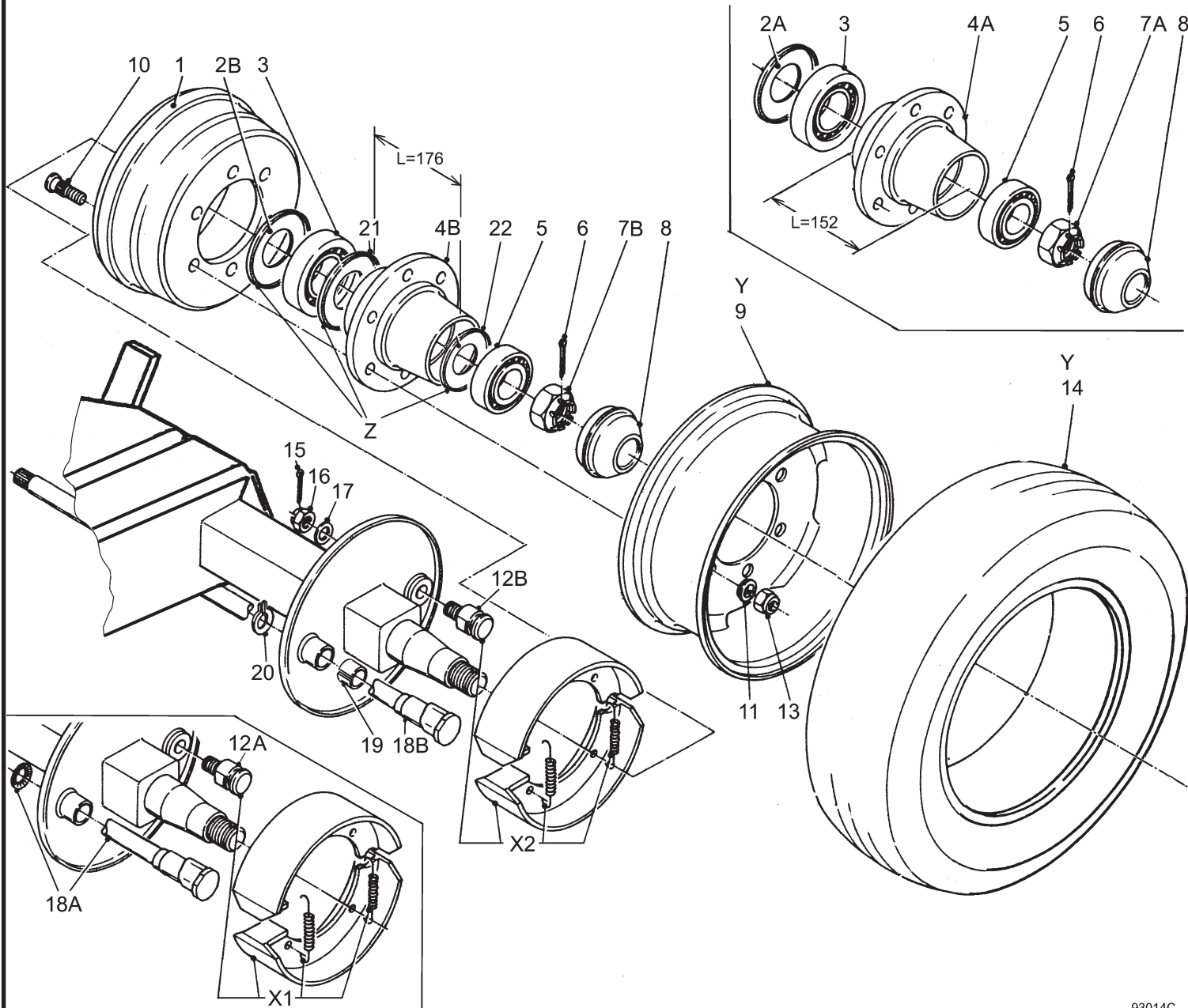


Bestelnummer
 Bestellnummer
 Ordernummer
 Num. a commander

1	90502	4	300x60
2A	90503	4	
2B	94279	4	
3	70132	4	32215
4A	90501	4	L=152
4B	94209	4	L=176
5	70131	4	32212
6	90522	4	
7A	90504	4	
7B	90697	4	
8	90505	4	
9	90901	4	1D 6.75 x 17.5
10	84938	24	M18 x 1.5 L=75/81
11	90521	24	
12	90519	24	M18 x 1.5 H=18
13	90847	4	235/75 R17.5 (143/141J)
14	90764	4	
15	90765	4	
16	90763	4	
17	94283	4	
18	94282	4	
19	94280	4	
20	94281	4	
X	05468	4	300x60 FA
Y	90900	4	235/75 R17.5 (143/141J)
Z	05515	4	

92197/2

Afbeelding 3C : Asstomp en rem 300x90 met wiel, Triomix S-2 1600
 Abbildung 3C : Laufachsstummel und Bremse 300x90 mit Rad, Triomix S-2 1600
 Picture 3C : Braked stubaxle 300x90 with wheel, Triomix S-2 1600
 Illustration 3C : Demi-essieux avec frein 300x90 et roue, Triomix S-2 1600

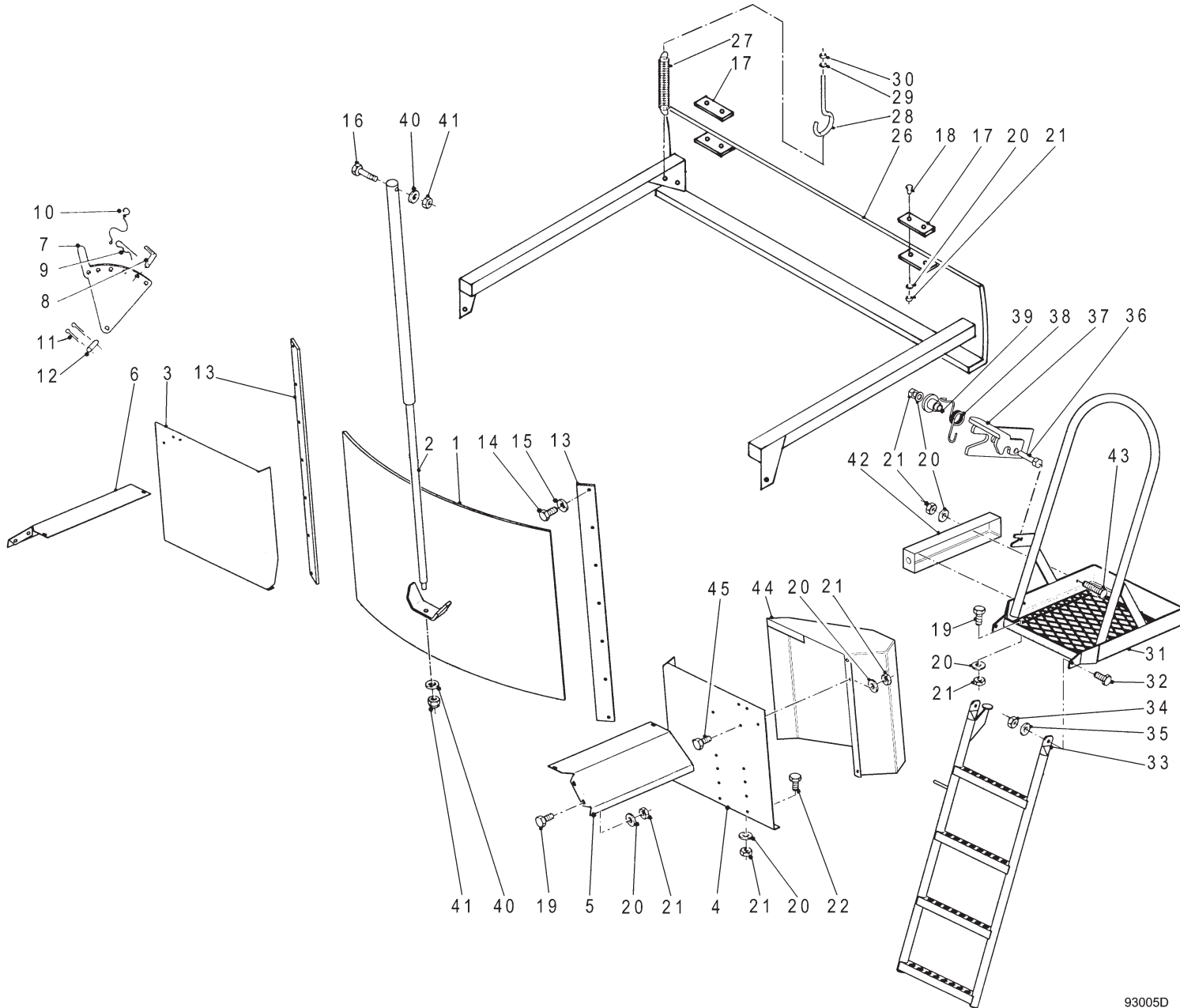


Bestelnummer
 Bestellnummer
 Ordernummer
 Num. a commander

1	90502	4	
2A	90503	4	
2B	94279	4	
3	70132	4	32215
4A	90501	4	L=152
4B	94209	4	L=176
5	70131	4	32212
6	90522	4	
7A	90504	4	
7B	90697	4	
8	90505	4	
9	90887	4	8.25 X 19.5
10	84944	24	M18 x 1.5 L=49/54
11	90521	24	
12A	90510	4	300x90 (IA)
12B	94293	4	300x90 (IC)
13	90519	24	M18 x 1.5 H=18
14	90886	4	305/70 R19.5
15	90524	4	
16	90511	4	
17	90523	4	
18A	90957	4	L=450 (IA)
18B	94284	4	L=450 (IC)
19	94285	4	
20	94286	4	
21	94280	4	
22	94281	4	
X1	90509	4	300x90 (IA)
X2	05512	4	300x90 (IC)
Y	90885	4	305/70 R19.5
Z	05515	4	

92197/2

Afbeelding 4 : Frame
 Abbildung 4 : Rahmen
 Picture 4 : Frame
 Illustration 4 : Châssis

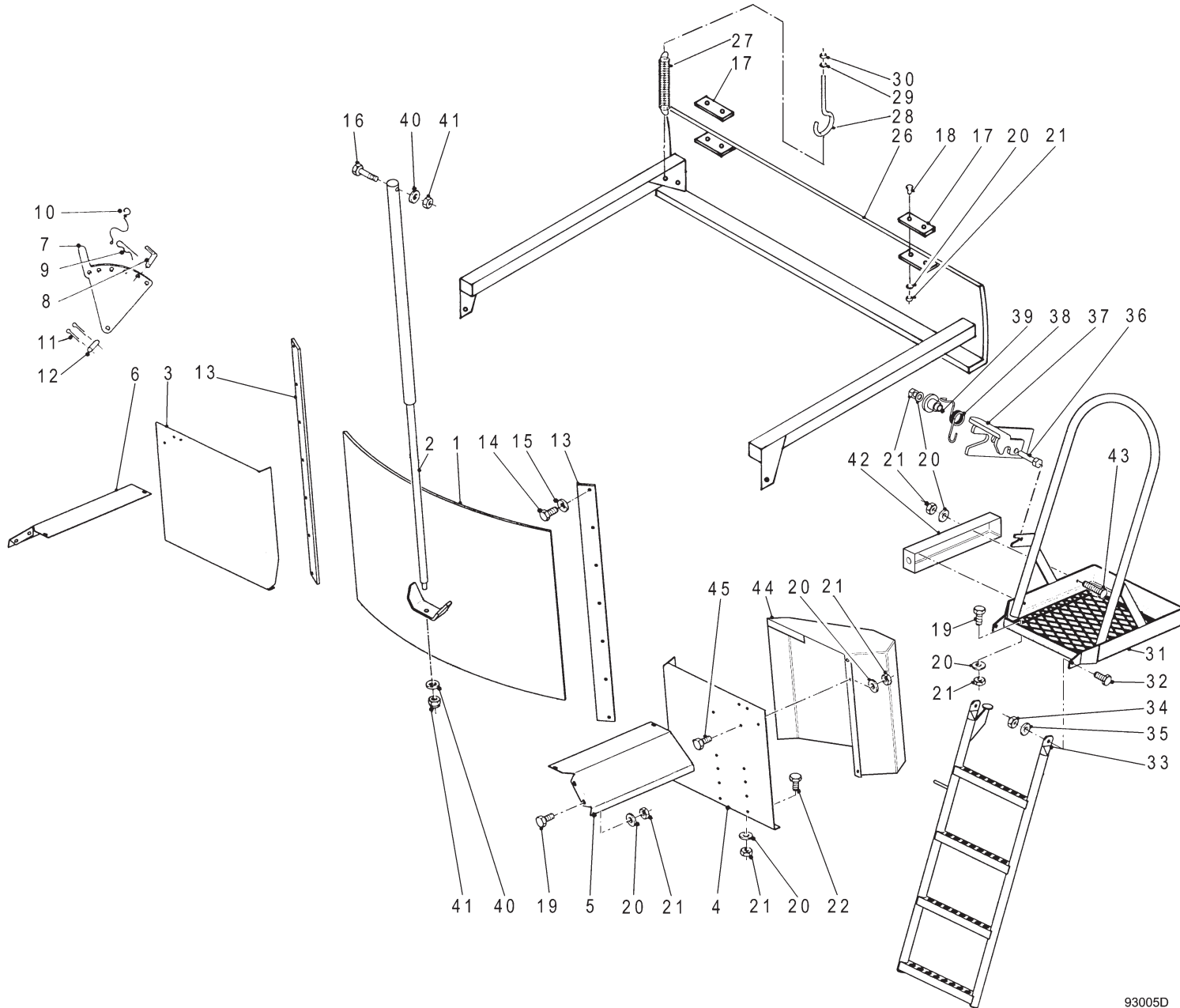


Bestelnummer
 Bestellnummer
 Ordernummer
 Num. a commander

1A	12873	1	1200
1B	13475	1	1600
2	51154	1	
3A	28379	1	1200
3B	28705	1	1600
4A	28380	1	1200
4B	28706	1	1600
5	28377	1	
6	28378	1	
7	12470	1	
8	90490	1	
9	65030	1	
10	90282	1	
11	88239	2	Ø5 x 40
12	25332	1	
13	29870	2	
14	81031	14	M10 x 30
15	85010	14	M10
16	81690	1	M16 x 90
17	60404	2/4	
18	80831	4/8	M8 x 30
19	80826	11	M8 x 25
20	85108	32	M8
21	86208	32	M8
22	80821	16	M8 x 20
26A	12894	1	1200
26B	12652	1	1600
27	65059	2/4	
28	84174	2/4	M10 x 80 x 14
29	85110	2/4	M10
30	86110	2/4	M10
31	12904	1	
32	81236	2	M12 x 35
33	13113	1	
34	86212	2	M12
35	85112	2	M12
36	80840	1	M8 x 40
37	28054	1	
38	65088	1	
39	32064	1	

92197/2

Afbeelding 4 : Frame
Abbildung 4 : Rahmen
Picture 4 : Frame
Illustration 4 : Châssis



93005D

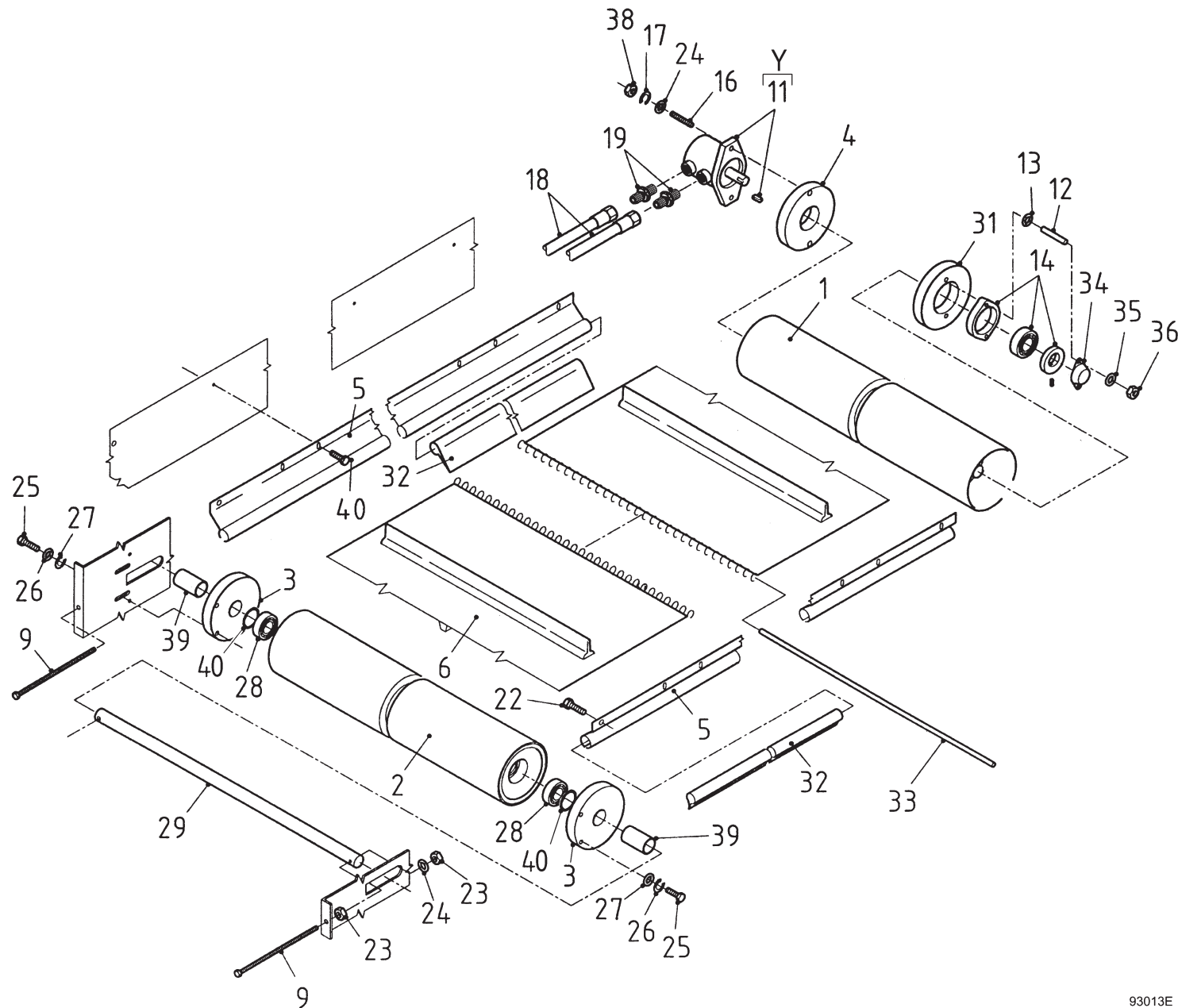
Bestelnummer
Bestellnummer
Ordernummer
Num. a commander

40	85116	2	M16
41	86216	2	M16
42	40641	1	
43	80870	2	M8 x 70
44	12908	1	
45	80831	2	M8 x 30

93005DL1

92197/2

Afbeelding 5 : Dwarsband
 Abbildung 5 : Querförderband
 Picture 5 : Side conveyor
 Illustration 5 : Tapis latéral



93013E

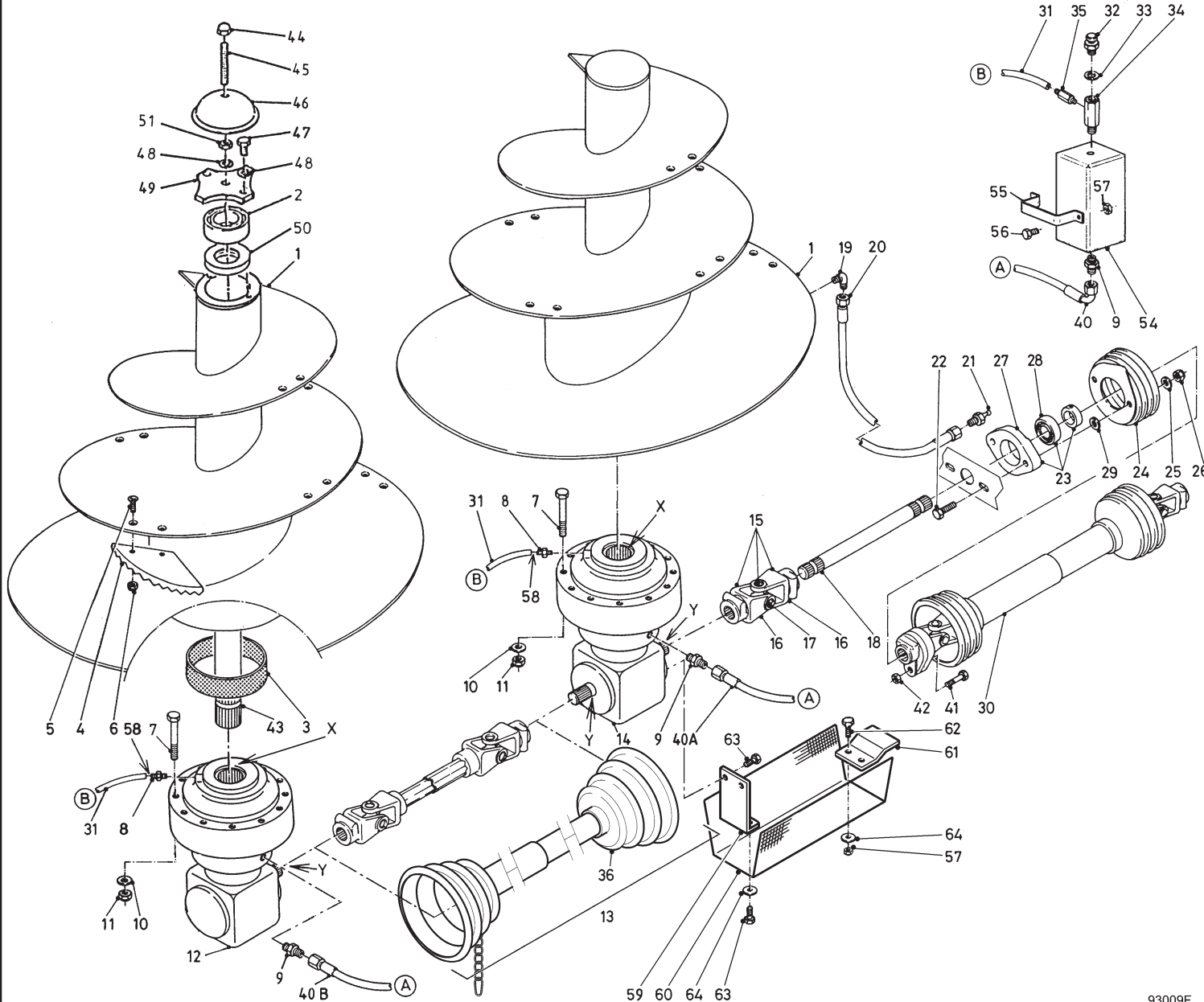
Bestelnummer
 Bestellnummer
 Ordernummer
 Num. a commander

1	11940	1
2	11979	1
3	60290	2
4	31709	1
5A	90745	2 L = 1980 1200
5B	90535	2 L = 2440 1600
6A	60334	1 L = 4000 1200
6B	60297	1 L = 4925 1600
9	81223	2 M12 x 180
11A	51130	1 Danfoss OMP 125
11B	51129	1 SAM BG 130
11C	51083	1 Bucher 127
12	84176	2 M8 x 60
13	85112	2 M8
14	70084	1
16	84108	2 M12 x 60
17	85112	2 M12
19	X50117	2
22	84717	18/22 M6 x 12
23	86112	4 M12
24	85012	4 M12
25	81031	4 M10 x 30
26	85010	4 M10
27	85113	4 M10
28	70010	2
29	25200	1
31	32190	1
32A	60333	2 L = 1980 1200
32B	60296	2 L = 2440 1600
33	25422	1
34	23304	1
35	85008	2 M8
36	86208	2 M8
38	86212	2 M12
39	25207	2 L = 53
40	87162	2 J = Ø62 x 2,0
Y1	05169	1 Danfoss
Y2	05358	1 Sam
Y3	05307	1 Bucher

93013EL1

92197/2

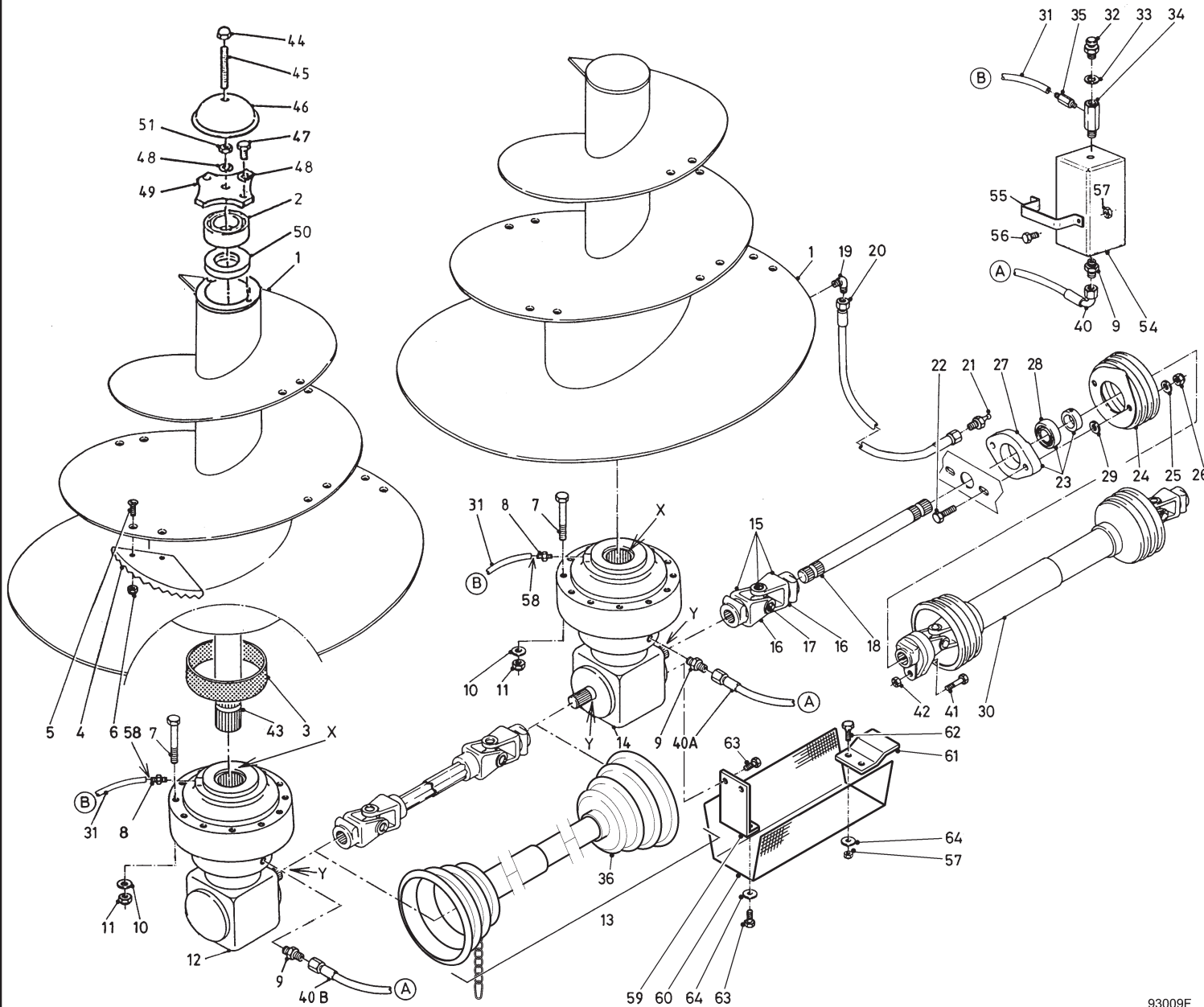
Afbeelding 6A : Aandrijving en mengvijzel, Triomix S-2 1200
 Abbildung 6A : Schnecke und Antrieb, Triomix S-2 1200
 Picture 6A : Auger and drive system, Triomix S-2 1200
 Illustration 6A : Vis et système d'entraînement, Triomix S-2 1200



Bestelnummer	Bestellnummer	Ordernummer	Num. a commander
1	13112	2	
2	70143	2	
3	51867	2	
4	31841	10	
5	84206	20	M16 x 60
6	86216	20	M16
7	84487	24	M14 x 140
8	50286	2	
9	X50112	4	
10	85114	24	M14
11	86214	24	M14
12	94019	1	
13	94204	1	Complete
14	94018	1	
15	90497	1	W2500
16	90563	2	1 ³ / ₈ - 6
17	90561	1	
18	31720	1	L=1330 1 ³ / ₈ - 6
19	50107	2	
20A	50957	1	1/4" 1520 RR
20B	52623	1	1/4" 3400 RR
21	89518	2	
22	81071	2	M10 x 70
23	70059	1	
24	90499	1	
25	85010	2	M10
26	86210	2	M10
27	70089	1	
28	70090	1	
29	85113	2	M10
30	90495	1	1 ³ / ₈ - 6 / 1 ³ / ₈ - 6 WWE2480
31A	52675	1	L=3000 Ø8
31B	52676	1	L=4600 Ø8
32	90567	2	
33	85215	2	
34	50176	2	
35	50285	2	
35	50285	2	
36	94334	1	Protection complete
40A	W50665	1	3/8" 1850 RH

92197/2

Afbeelding 6A : Aandrijving en mengvijzel, Triomix S-2 1200
 Abbildung 6A : Schnecke und Antrieb, Triomix S-2 1200
 Picture 6A : Auger and drive system, Triomix S-2 1200
 Illustration 6A : Vis et système d'entraînement, Triomix S-2 1200

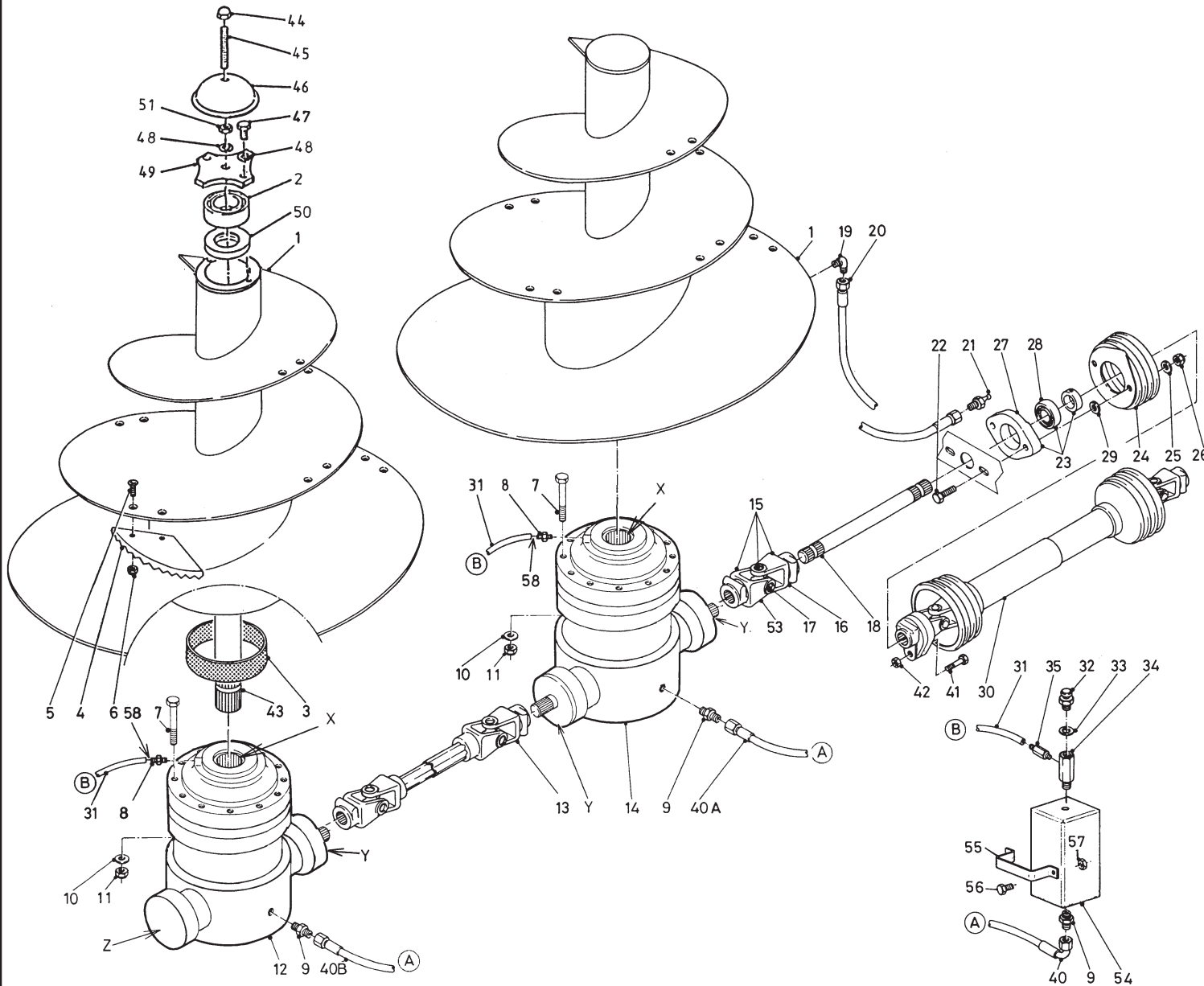


Bestelnummer
 Bestellnummer
 Ordernummer
 Num. a commander

40B	W50686	1	3/8" 3300 RH
41	80860	1	M8 x 60 8.8
42	86208	1	M8
43	32307	2	L=810
44	86937	2	M16
45	84072	2	M16 x 120
46	29299	2	
47	81626	4	M16 x 25
48	85016	6	M16
49	29298	2	
50	70145	2	
51	86116	2	M16
54	90904	2	
55	28845	2	
56	80831	4	M8 x 30
57	86208	4	M8
58	50278	2	Ø8
59	42163	1	
60	40700	1	
61	40619	1	
62	80821	2	M8 x 20
63	80816	4	M8 x 16
64	85109	4	M8
X	70168	2	100 x 130 x 12
Y	05476	3	

92197/2

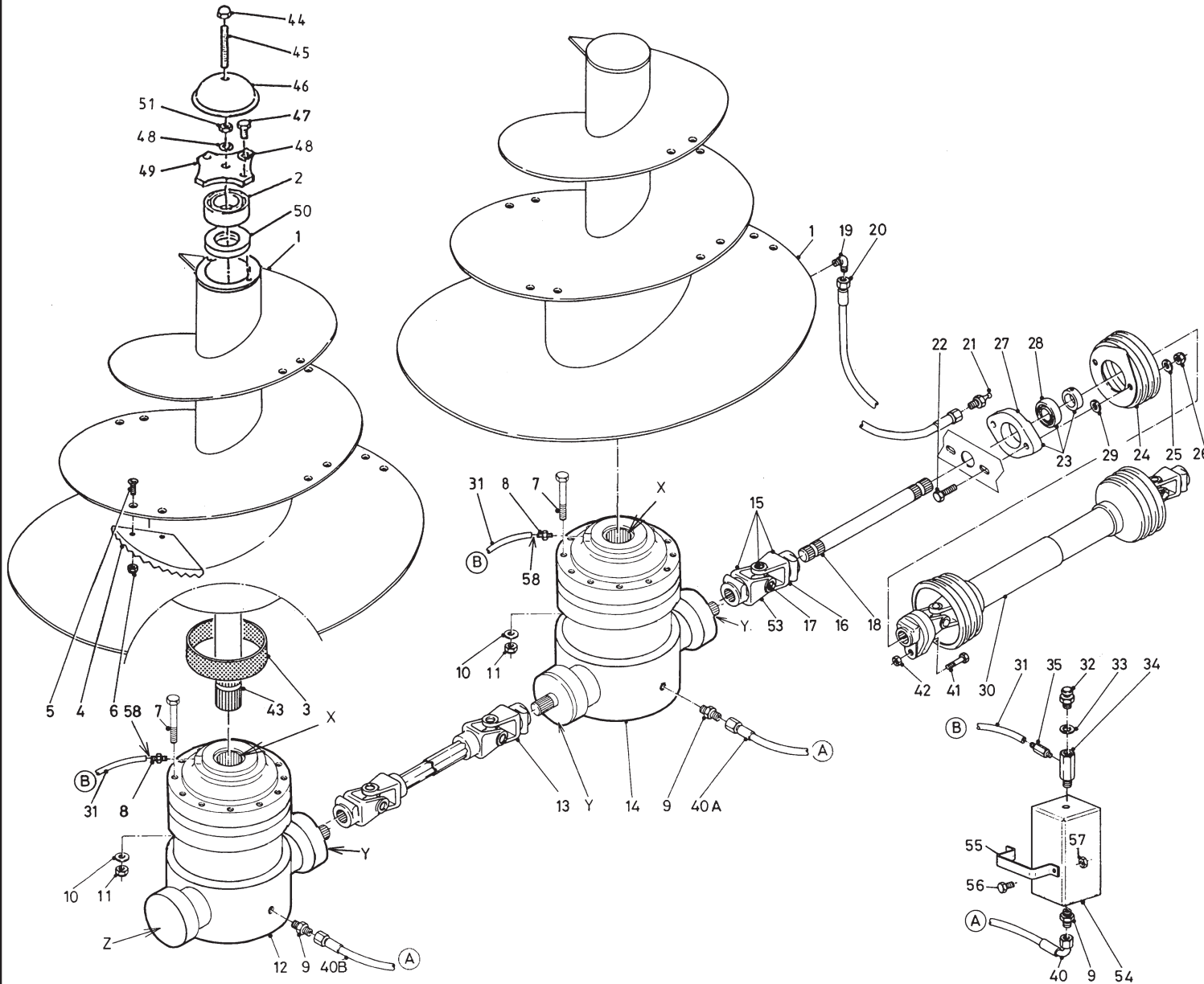
Afbeelding 6B : Aandrijving en mengvijzel, Triomix S-2 1600
 Abbildung 6B : Schnecke und Antrieb, Triomix S-2 1600
 Picture 6B : Auger and drive system, Triomix S-2 1600
 Illustration 6B : Vis et système d'entraînement, Triomix S-2 1600



Bestelnummer	Bestellnummer	Ordernummer	Num. a commander
1	13477	2	
2	70143	2	
3	51867	2	
4	31841	10	
5	84206	20	M16 x 60
6	86216	20	M16
7	84487	24	M14 x 140
8	50286	2	
9	X50112	4	
10	85114	24	M14
11	86214	24	M14
12	90995	1	
13	90903	1	
14	90996	1	
15	90802	1	W2500
16	90608	1	1 ³ / ₄ - 6
17	90561	1	
18	32245	1	L=1430 1 ³ / ₄ - 6
19	50107	2	
20A	50957	1	1/4" 1520 RR
20B	52678	1	1/4" 3900 RR
21	89518	2	
22	81271	2	M12 x 70
23	70133	1	
24	90499	1	
25	85012	2	M12
26	86112	2	M12
27	70135	1	
28	70134	1	
29	85119	2	M12
30	90496	1	1 ³ / ₄ - 6 / 1 ³ / ₈ - 6 WWE2580
31A	52675	1	L=3000 Ø8
31B	52676	1	L=4600 Ø8
32	90567	2	
33	85215	2	
34	50176	2	
35	50285	2	
40A	W50665	1	3/8" 1850 RH
40B	W50622	1	3/8" 4500 RH
41	81060	1	M10 x 60 8.8

92197/2

Afbeelding 6B : Aandrijving en mengvijzel, Triomix S-2 1600
 Abbildung 6B : Schnecke und Antrieb, Triomix S-2 1600
 Picture 6B : Auger and drive system, Triomix S-2 1600
 Illustration 6B : Vis et système d'entraînement, Triomix S-2 1600

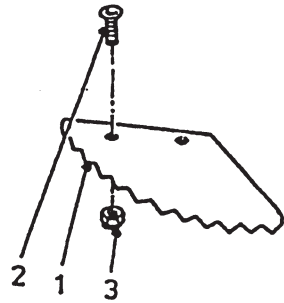


Bestelnummer	Bestellnummer	Ordernumber	Num. a commander
42	86210	1	M10
43	32307	2	L=810
44	86937	2	M16
45	84072	2	M16 x 120
46	29299	2	
47	81626	4	M16 x 25
48	85016	6	M16
49	29298	2	
50	70145	2	
51	86116	2	M16
53	90562	1	1 ³ / ₄ - 20
54	90904	2	
55	28845	2	
56	80831	4	M8 x 30
57	86208	4	M8
58	50278	2	Ø8
X	70168	2	100 x 130 x 12
Y	05471	3	
Z	78167	1	Ø126.6 x 2.62/70

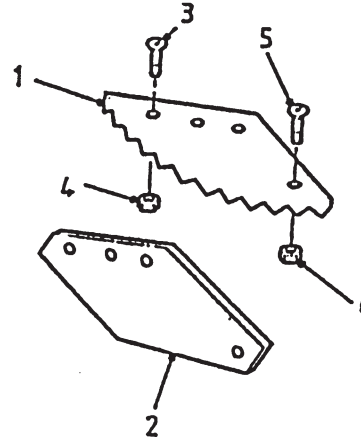
92197/2

Afbeelding 6C : Vijzelmessen
 Abbildung 6C : Schneckenmesser
 Picture 6C : Augerknives
 Illustration 6C : Couteaux

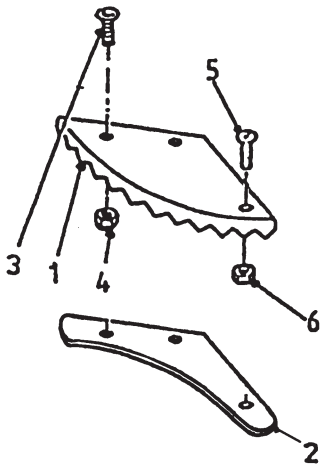
Standaard L=350



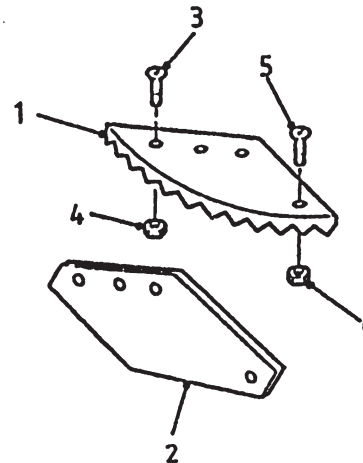
Standaard L=550



L=350 + TC



L=550 + TC



Bestelnummer
 Bestellnummer
 Ordernummer
 Num. a commander

Standaard

1	31841	1	
2	84121	2	M16 x 45
3	86216	2	M16

L=350 + TC

1	32354	1	TC
2	29291	1	
3	84188	2	M16 x 55
4	86216	2	M16
5	84125	1	M8 x 25
6	86208	1	M8

L=550

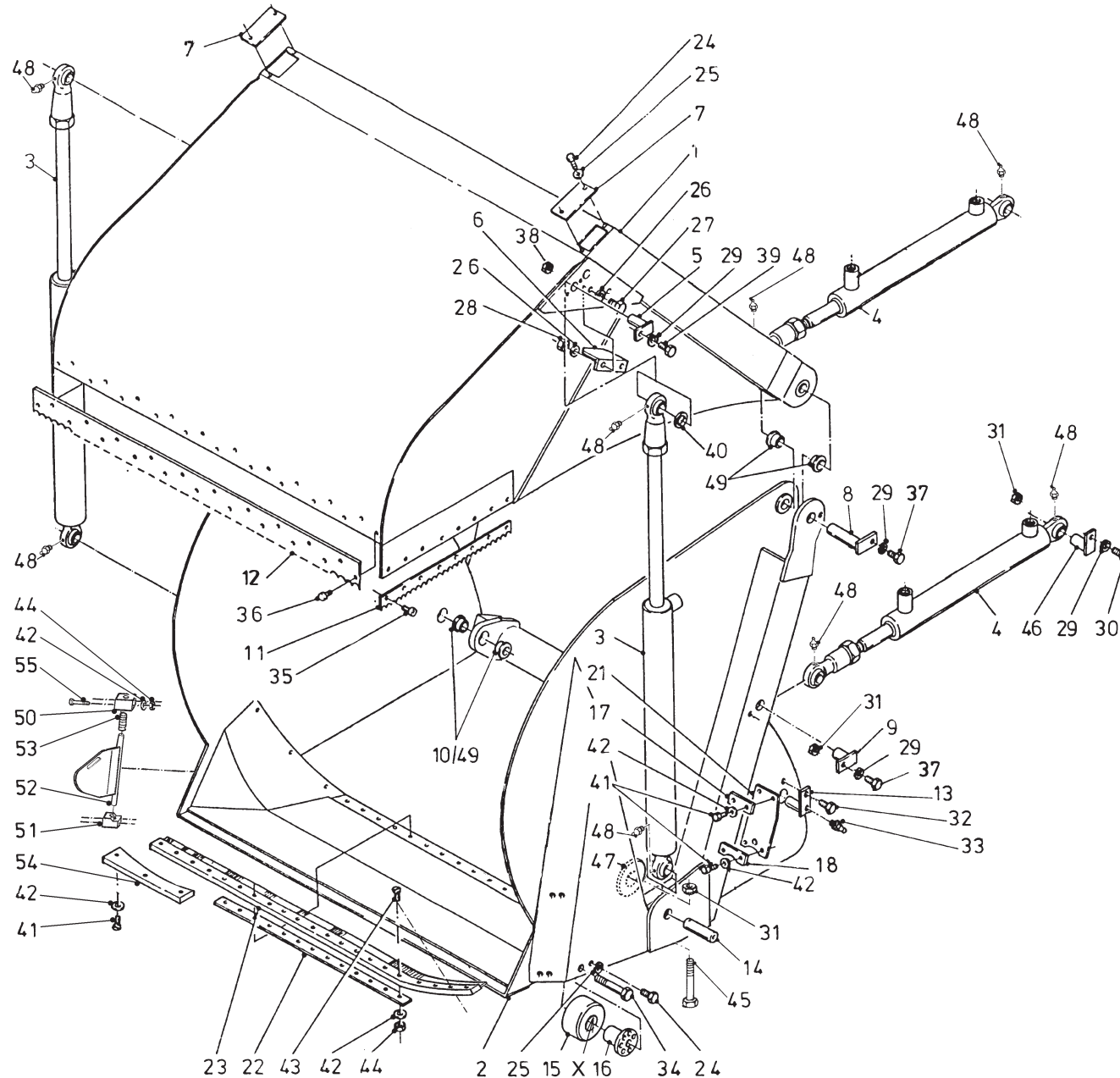
1	31639	1	
2	31640	1	
3	84188	3	M16 x 55
4	86216	3	M16
5	84125	1	M8 x 25
6	86208	1	M8

L=550 + TC

1	31639	1	TC
2	31640	1	
3	84188	3	M16 x 55
4	86216	3	M16
5	84125	1	M8 x 25
6	86208	1	M8

92197/2

Afbeelding 7 : Stans-laadklep
 Abbildung 7 : Stanz Ladeklappe
 Picture 7 : Cutting frame and loading platform
 Illustration 7 : Système de coupe et chargement

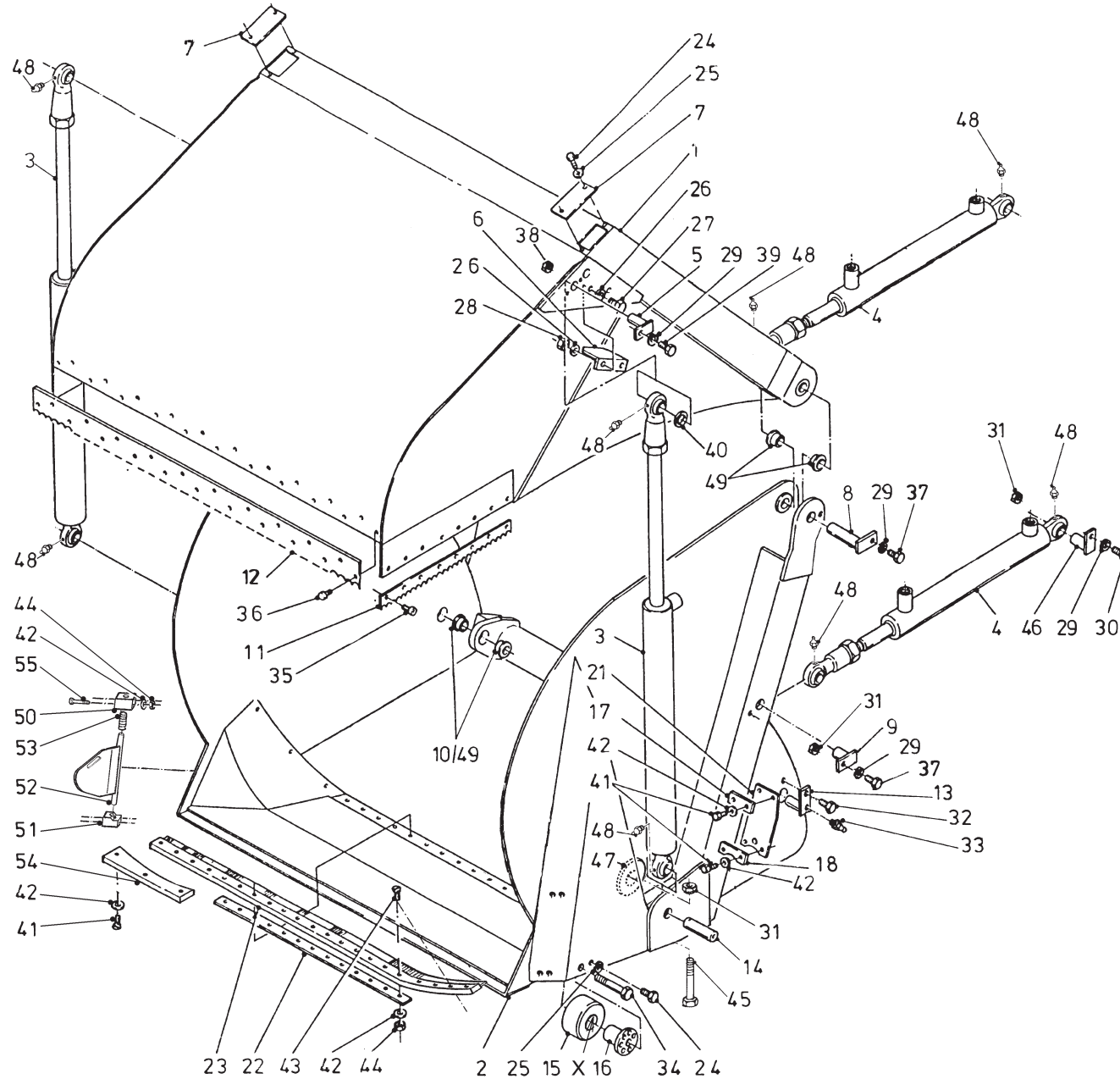


Bestelnummer
 Bestellnummer
 Ordernummer
 Num. a commander

1A	12893	1	1200
1B	12655	1	1600
2A	12892	1	1200
2B	12645	1	1600
3A	51211	2	1200 → 02
3B	51239	2	1200 → 03 / 1600 → 01
4A	51217	2	1200
4B	51231	2	1600
5	12656	2	Ø50
6	29036	2	
7	40625	2	
8	13262	2	Ø50
9	12896	2	Ø50
10	51751	4	Ø35 → 01
11	28799	2	
12A	29158	1	1200
12B	27775	1	1600
13A	12895	2	Ø35
13B	13278	2	Ø50
14	32108	2	
15	32033	2	
16	11954	2	
17	29030	2	
18	29031	2	
21	60402	2	
22	29350	1	
23A	60412	1	1200 → 02
23B	60391	1	1200 → 03 / 1600 → 01
24	81021	6	M10 x 20
25	85010	12	M10
26	85110	4	M10
27	81031	4	M10 x 30
28	86210	4	M10
29	85112	4	M12
30	81241	2	M12 x 40
31	86212	6	M12
32	81221	2	M12 x 20
33	89517	2	
34	81610	2	M16 x 100
35	84207	16	M6 x 12

92197/2

Afbeelding 7 : Stans-laadklep
 Abbildung 7 : Stanz Ladeklappe
 Picture 7 : Cutting frame and loading platform
 Illustration 7 : Système de coupe et chargement

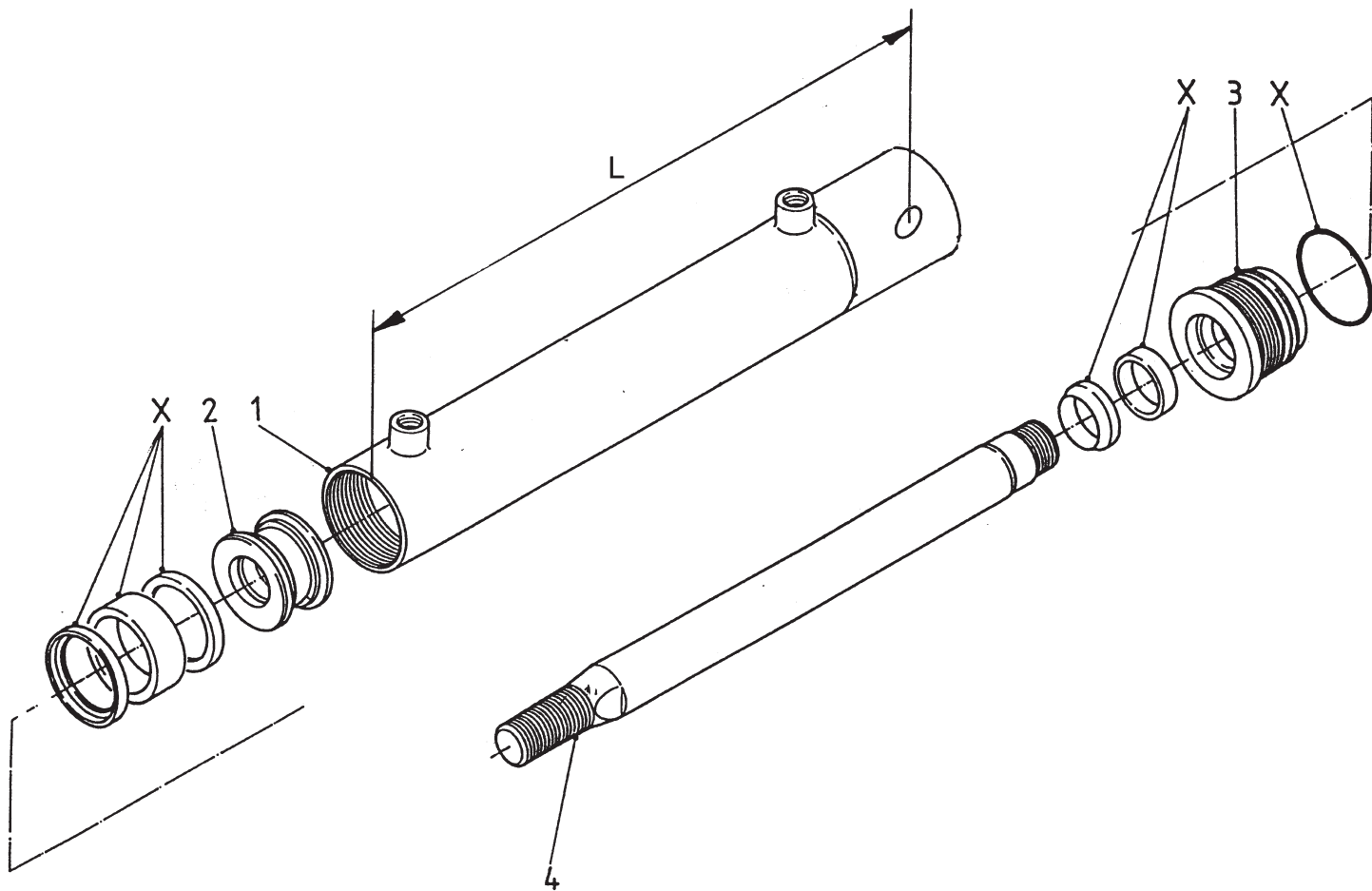


Bestelnummer
 Bestellnummer
 Ordernummer
 Num. a commander

36	84926	23	M10 x 19
37	81226	4	M12 x 25
38	86812	2	M12
39	81231	2	M12 x 30
40	29110	2	
41	80831	18	M8 x 30
42	85108	47	M8
43	84183	19	M8 x 25
44	86208	27	M8
45	81210	2	M12 x 100
46	12886	2	Ø50
47	29945	2	Ø63 x 8
48	89505	8	M8 x 1
49	51906	6	Ø50
50	32404	2	
51	32405	2	
52A	13368	1	Left
52B	13369	1	Right
53	65092	2	
54	42553	2	
55	84149	8	M8 x 45
X	78118	2	Ø50 x 3.0 / 70

92197/2

Afbeelding 8 : Doseerklapcilinder
Abbildung 8 : Auswurfschieber Zylinder
Picture 8 : Slide cylinder
Illustration 8 : Porte de dosage: cylindre hydraulique



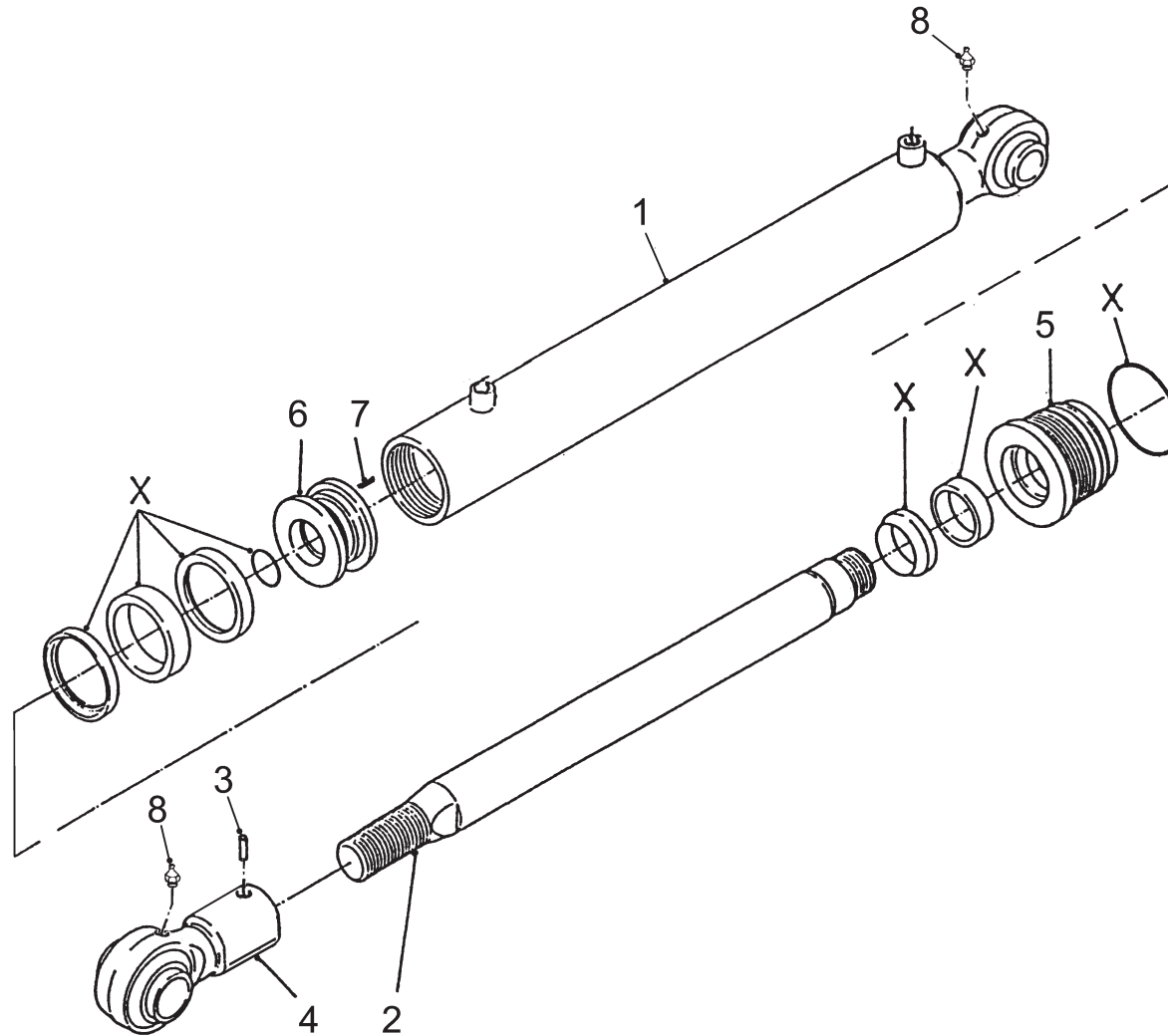
Bestelnummer
Bestellnummer
Ordernummer
Num. a commander

51154 = 690

1	12349	1	L = 798
2	30860	1	
3	31460	1	
4	31764	1	
X	05309	1	

92197/2

Afbeelding 9A : Laadklepcilinder
 Abbildung 9A : Ladeklappe Zylinder
 Picture 9A : Loading cylinder
 Illustration 9A : Cilindre de chargement



Bestelnummer
 Bestellnummer
 Ordernummer
 Num. a commander

51217 H = 795 TMS-2 1200

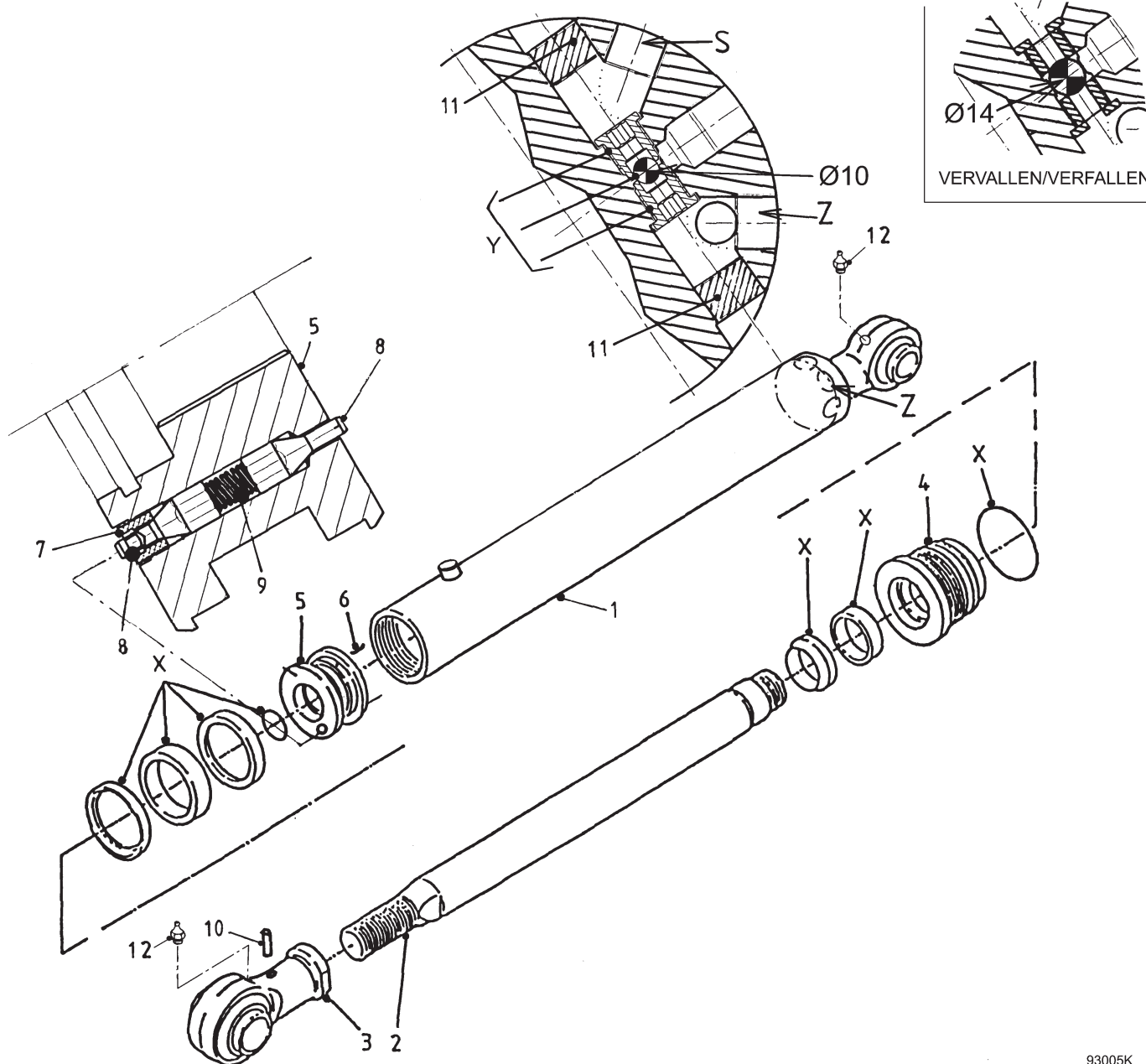
1	13079	1	
2	32256	1	
3	84106	1	M12 x 12
4	13072	1	
5	32281	1	
6	31899	1	
7	84119	1	M6 x 10
8	89505	2	M8 x 1
X	05465	1	

51231 H = 795 TMS-2 1600

1	13471	1	
2	32256	1	
3	84106	1	M12 x 12
4	13072	1	
5	32435	1	
6	32434	1	
7	84119	1	M6 x 10
8	89505	2	M8 x 1
X	05503	1	

92197/2

Afbeelding 9B : Hoofdcilinder Triomix S-2 1200 →| serie 02
 Abbildung 9B : Hauptzylinder Triomix S-2 1200 →| Serie 02
 Picture 9B : Main cylinder Triomix S-2 1200 →| serie 02
 Illustration 9B : Cilindre principal Triomix S-2 1200 →| série 02



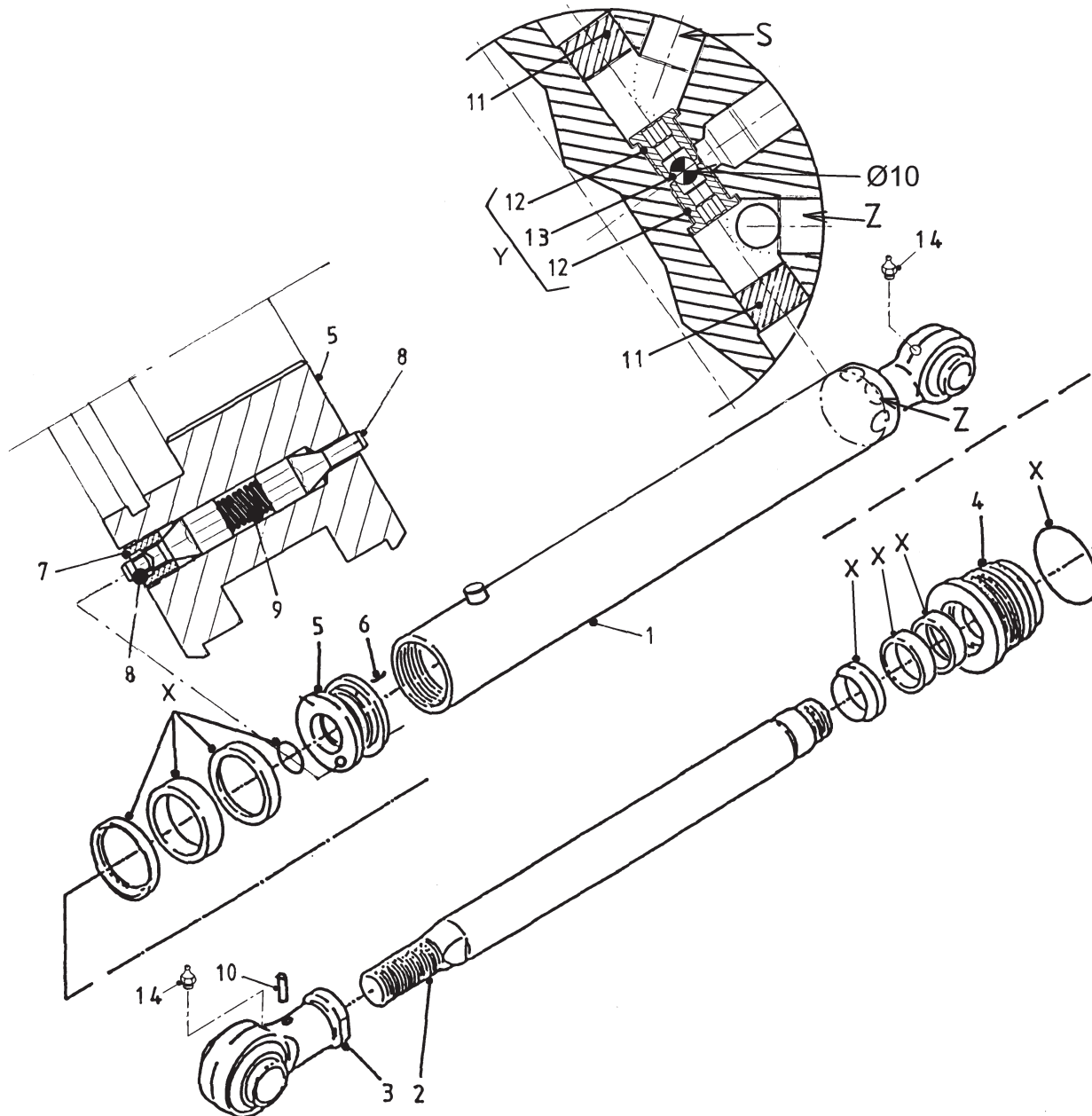
Bestelnummer
 Bestellnummer
 Ordernummer
 Num. a commander

51211 H = 2065 TMS-2 1200

1	13028	1	
2	32119	1	
3	12685	1	
4	32217	1	
5	32216	1	
6	84119	1	M6 x 10
7	30870	1	
8	31277	2	
9	65062	1	
10	84106	1	M12 x 12
11	53353	2	
12	89505	2	M8 x 1
X	05477	1	
Y	05514	1	

92197/2

Afbeelding 9C : Hoofdcilinder TM S-2 1200 |→ serie 03, TM S-2 1600 |→ serie 01
 Abbildung 9C : Hauptzylinder TM S-2 1200 |→ Serie 03, TM S-2 1600 |→ Serie 01
 Picture 9C : Main cylinder TM S-2 1200 |→ serie 03, TM S-2 1600 |→ serie 01
 Illustration 9C : Cilindre principal TM S-2 1200 |→ série 03, TM S-2 1600 |→ série 01



93006K

Bestelnummer
 Bestellnummer
 Ordernummer
 Num. a commander

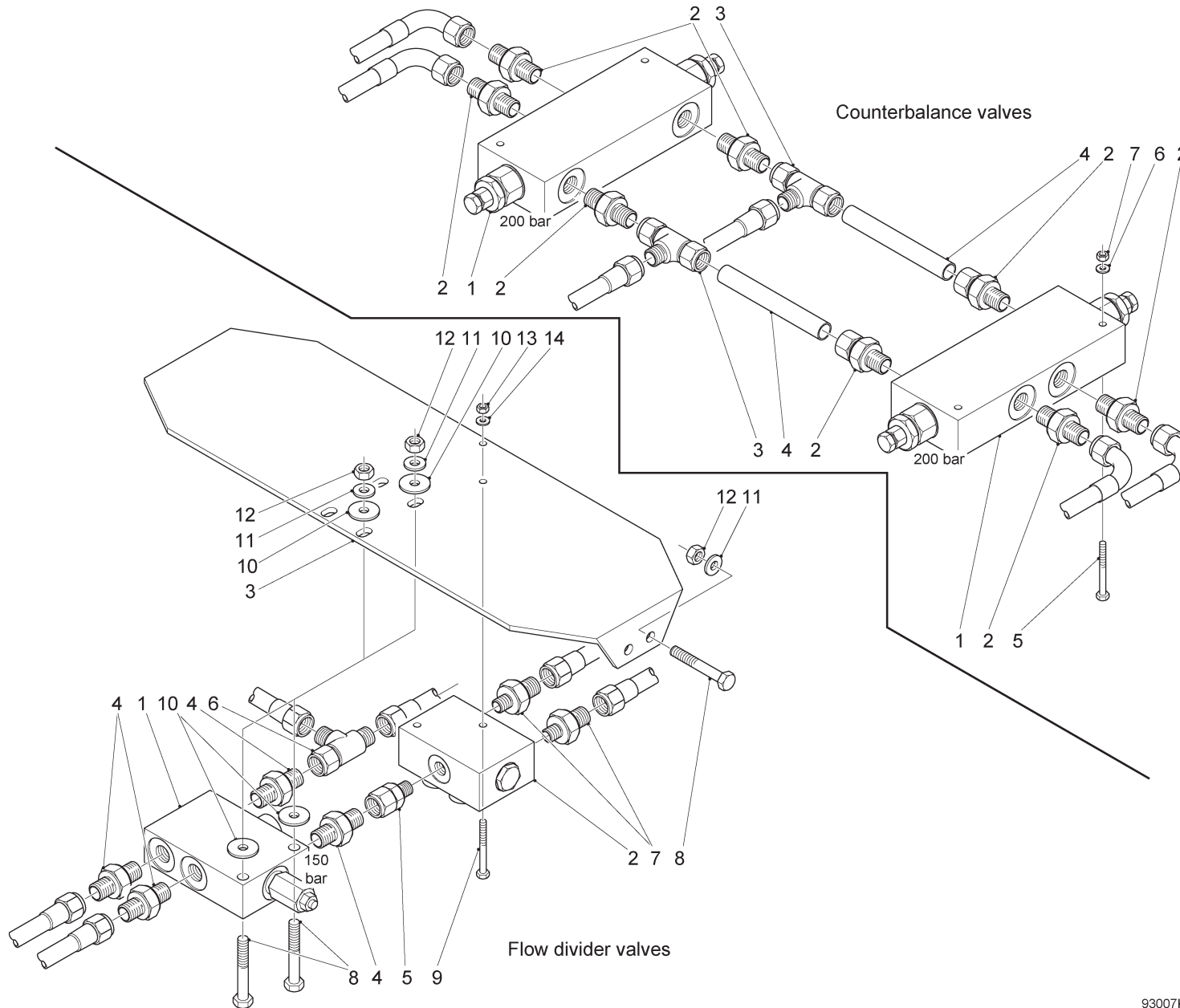
51239 H = 2065 1200/1600

1	13028	1	
2	32119	1	
3	12685	1	
4	32440	1	
5	32345	1	
6	84119	1	M6 x 10
7	30870	1	
8	31277	2	
9	65062	1	
10	84106	1	M12 x 12
11	53353	2	
12	53507	2	
13	70069	1	Ø10
14	89505	2	M8 x 1
X	05504	1	
Y	05514	1	

93006KL1

92197/2

- Afbeelding 10 : Stroomdeler en counterbalance ventielen
 Abbildung 10 : Stromteiler und Senkbremsventile
 Picture 10 : Flow divider and counterbalance valves
 Illustration 10 : Diviseur de débit et 'counterbalance' valves



Bestellnummer
 Bestellnummer
 Ordernummer
 Num. a commander

Counterbalance 53470

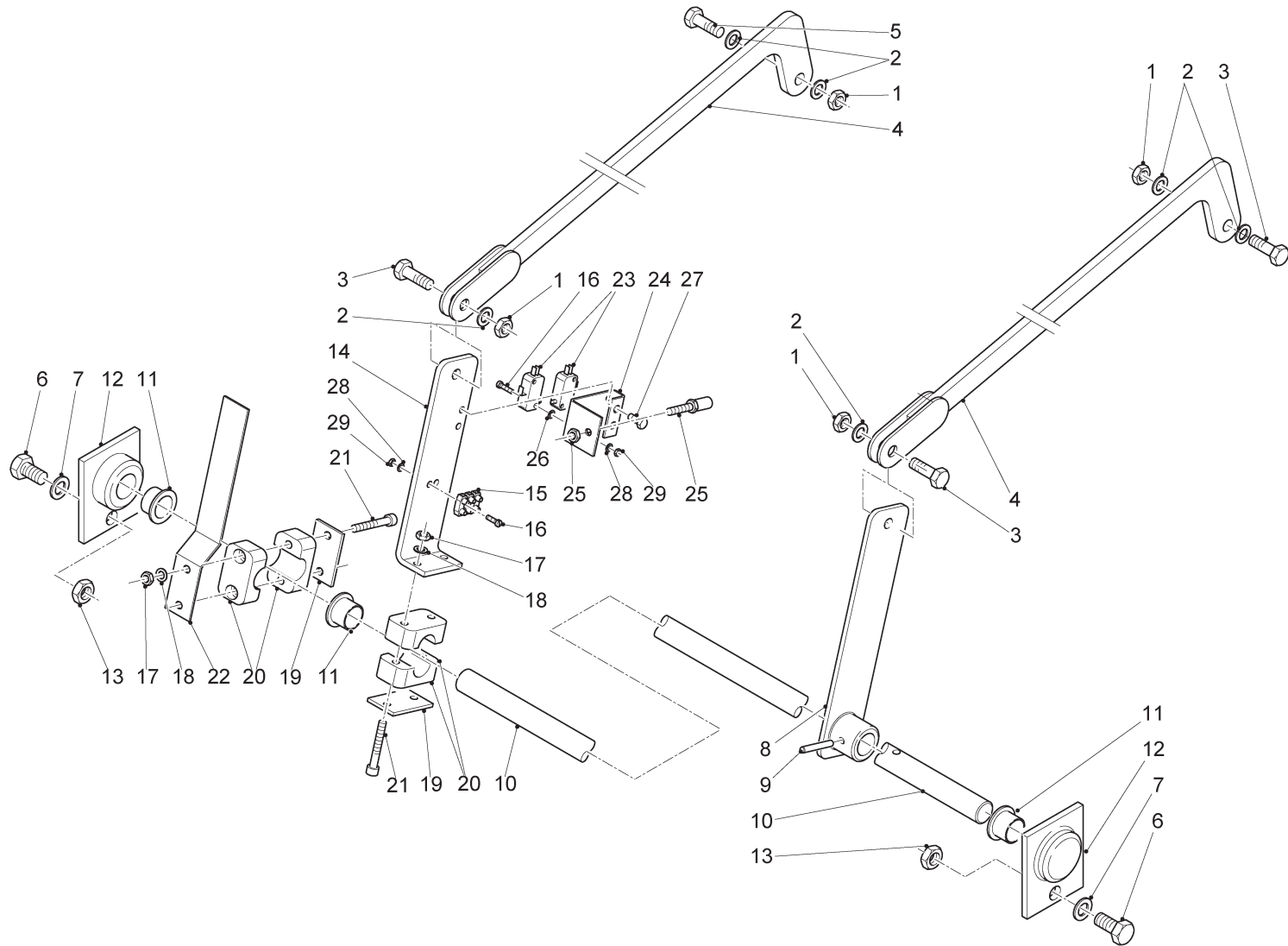
1	53470	2	
2	X50116	6	
3	50303	2	
4	52650	2	L = 85
5	80660	4	M6 x 60
6	85106	4	M6
7	86206	4	M6

Flow divider 53457 - 53471

1	53457	1	
2	53471	1	
3	28971	1	
4	50273	4	
5	50289	1	
6	X50312	1	
7	X50138	2	
8	81060	6	M10 x 60
9	80660	2	M6 x 60
10	85113	4	M10
11	85110	6	M10
12	86210	6	M10
13	86206	2	M6
14	85106	2	M6

92197/2

Afbeelding 11 : Gelijkloopbeveiligingssysteem
 Abbildung 11 : Gleichlaufüberwachungsanlage
 Picture 11 : Parallel running safety system
 Illustration 11 : Système de contrôle du parallélisme

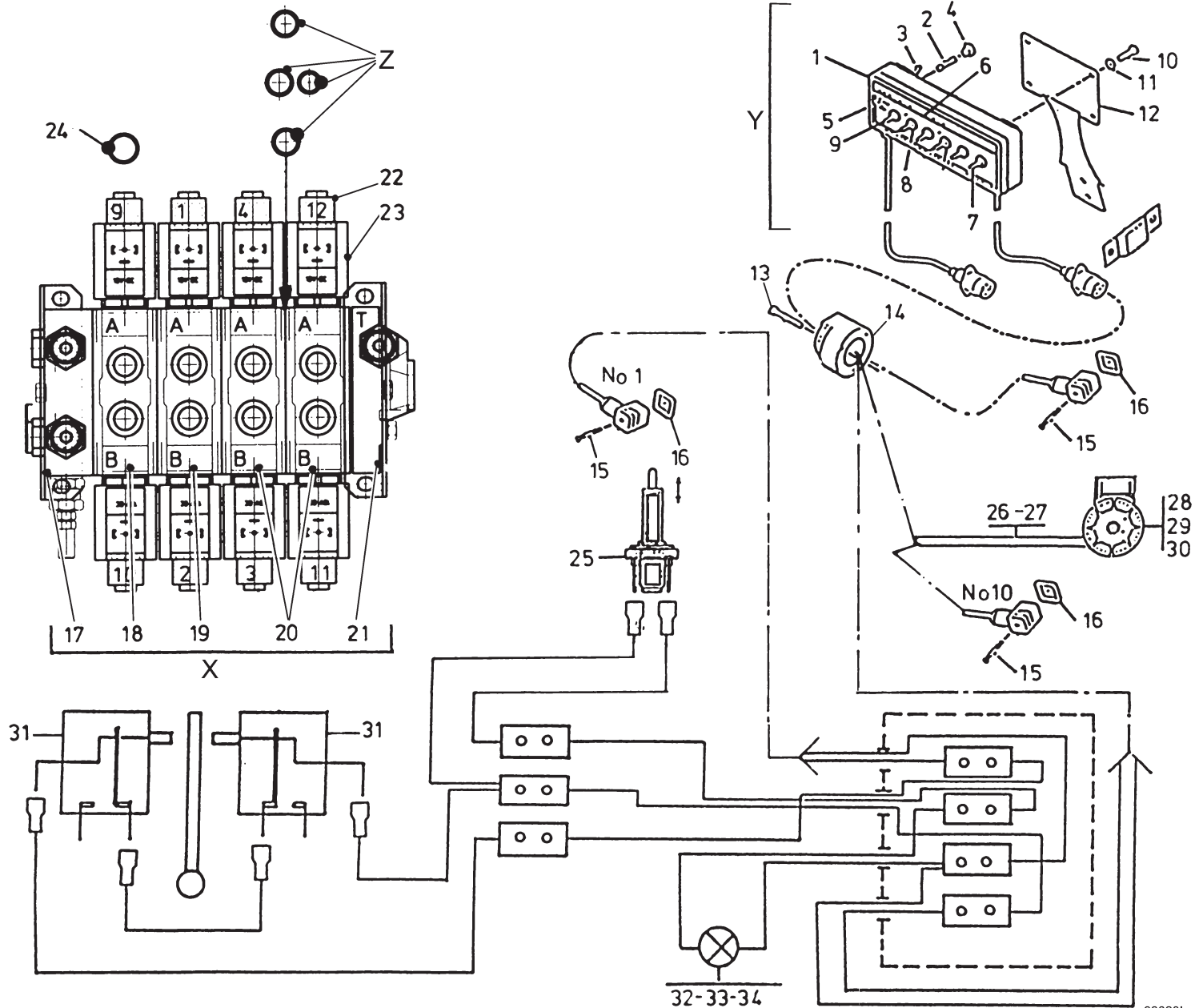


Bestelnummer
 Bestellnummer
 Ordernummer
 Num. a commander

1	86910	4	M10
2	85110	6	M10
3	81040	2	M10 x 40
4	13001	2	
5	81036	2	M10 x 35
6	81236	2	M12 x 35
7	85112	2	M12
8	12967	1	
9	88036	1	Ø6 X 36
10A	29351	1	L = 2144 1200
10B	28768	1	L = 2540 1600
11	60020	3	
12	12965	2	
13	86212	2	M12
14	28795	1	
15	98234	1	
16	80320	6	M3 X 20
17	86206	4	M6
18	85106	4	M6
19	90434	2	
20	90433	4	
21	80651	4	M6 x 50
22	65083	1	
23	98299	2	
24	40653	1	
25	98168	1	
26	60397	4	
27	84710	2	M6 x 12
28	85103	6	M3
29	86203	6	M3

92197/2

Afbeelding 12 : Elektrische bediening
 Abbildung 12 : Elektrische Fernbedienung
 Picture 12 : Electrical remote control
 Illustration 12 : Commande électrique

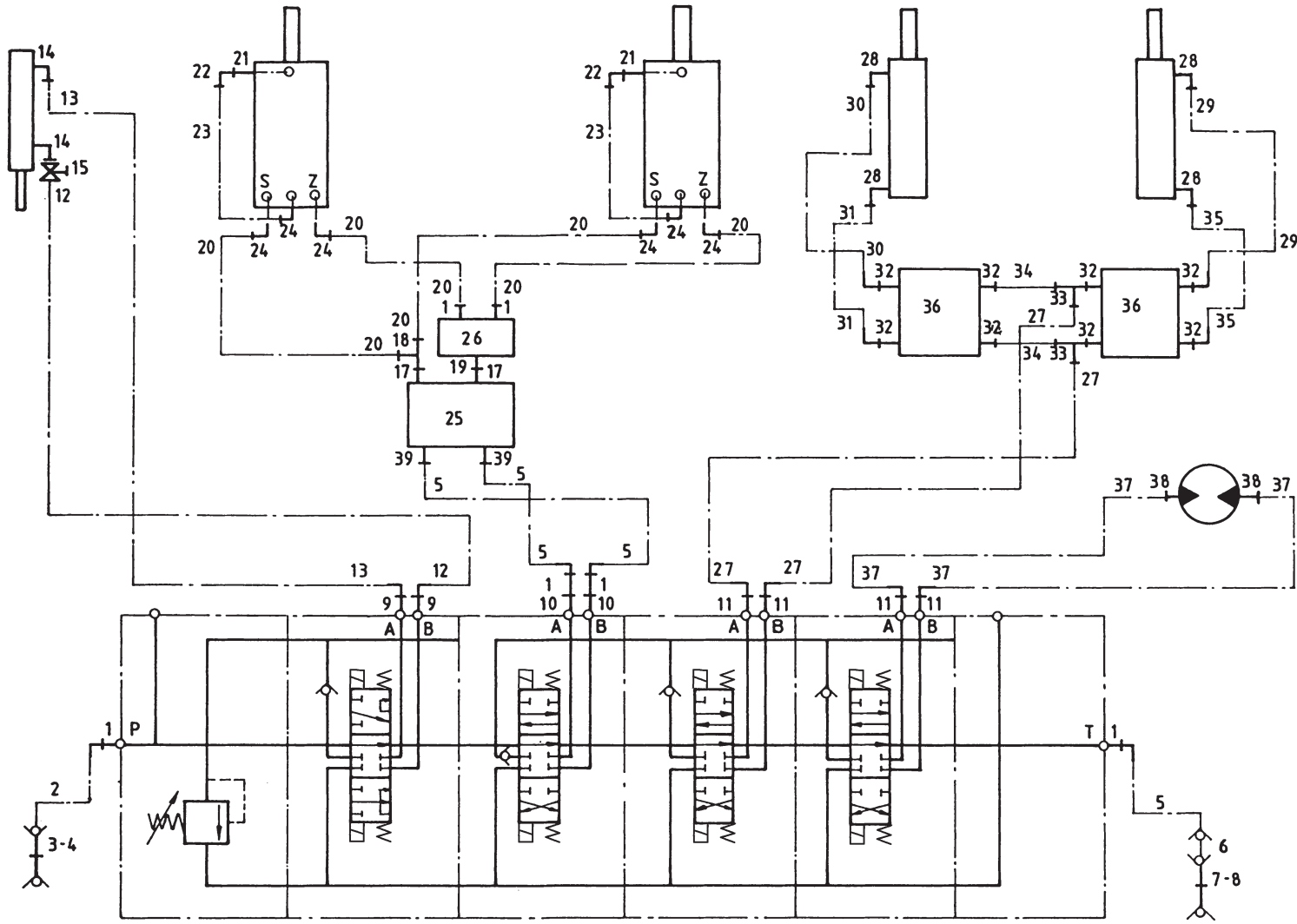


Bestelnummer
 Bestellnummer
 Ordernummer
 Num. a commander

1	98166	1
2	98053	1
3	98054	1
4	98052	1
5	98051	1
6	91015	1
7	98113	5
8	98056	5
9	98206	1
10	84717	4 M6 x 12
11	85106	4 M6
12	40420	1
13	84476	3 M5 x 30
14	98232	1 L=1600
15	84711	8 M3 x 35
16	60180	8
17	53283	1 HDS15
18	53277	1 HDS15
19	53278	1 HDS15
20	53280	2 HDS15
21	53284	1 HDS15
22	98222	8 HDS15
23	98201	8 HDS15
24	78062	16 18.77 x 1.78/70
25	98168	1
26	98214	1 L=5000
27	90534	1 L=5000
28	98213	1
29	80420	2 M4 x 20
30	86204	2 M4
31	98299	1
32	98178	1
33	98181	1
34	98122	1
35	24644	1
X1	53276	1 HDS15/4
X2	53411	1 HDS15/5
X3	53423	1 HDS15/6
Y	98233	1 Box complete
Z	05247	1

92197/2

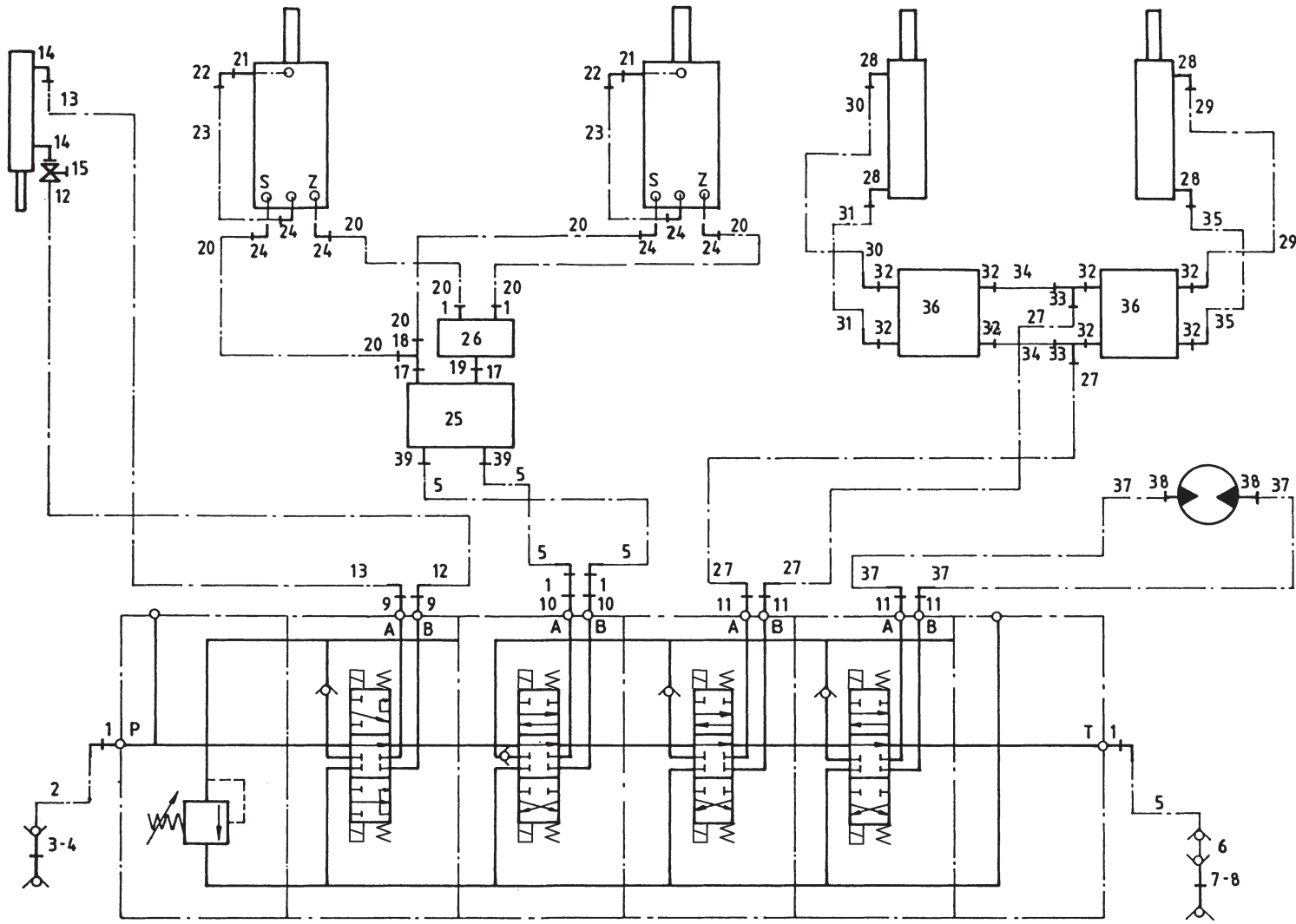
Afbeelding 13 : Slangenschema elektrische bediening
 Abbildung 13 : Hydraulik Plan elektrische Fernbedienung
 Picture 13 : Hydraulics electrical remote control
 Illustration 13 : Commande électrique: système hydraulique



Bestellnummer	Num. a commander
1	X50138
2	W52669
3	53303
4	53315
5A	W52668
5B	W52729
6	53250
7	53326
8	53309
9	X50114
10	50133
11	X50132
12A	W50639
12B	W50897
13	W50758
14	X50107
15	51027
17	50273
18	X50312
19	50289
20A	W52687
20B	W52636
21	50139
22	50418
23	52679
24	X50140
25	53457
26	53471
27	W50917
28	X50101
29A	W50748
29B	W50768
30A	W50668
30B	W50910
31A	W50768
31B	W50668
32	X50116
33	50303
34	52650
35A	W50805
6	X50138
1 5/8"	4100 RH
1	Red
1	
1	5/8"
1	3800 RH 1200
1	5/8"
1	4800 RH 1600
1	
1	Blue
2	
2	
4	
1	1/4"
1	1400 RH 1200
1	1/4"
1	1560 RH 1600
1	1/4"
1	2100 RH
2	
1	
2	
1	
1	
4	5/8"
4	1900 RH 1200
4	5/8"
4	2200 RH 1600
2	
2	
2	
6	
1	
1	
2	1/2"
2	770 RH
4	
1	1/2"
1	2200 RH 1200
1	1/2"
1	3000 RH 1600
1	1/2"
1	4000 RH 1200
1	1/2"
1	4770 RH 1600
1	1/2"
1	3000 RH 1200
1	1/2"
1	4000 RH 1600
8	
2	
2	
2	
1	1/2"
1	1400 RH 1200

92197/2

Afbeelding 13 : Slangenschema elektrische bediening
 Abbildung 13 : Hydraulik Plan elektrische Fernbedienung
 Picture 13 : Hydraulics electrical remote control
 Illustration 13 : Commande électrique: système hydraulique

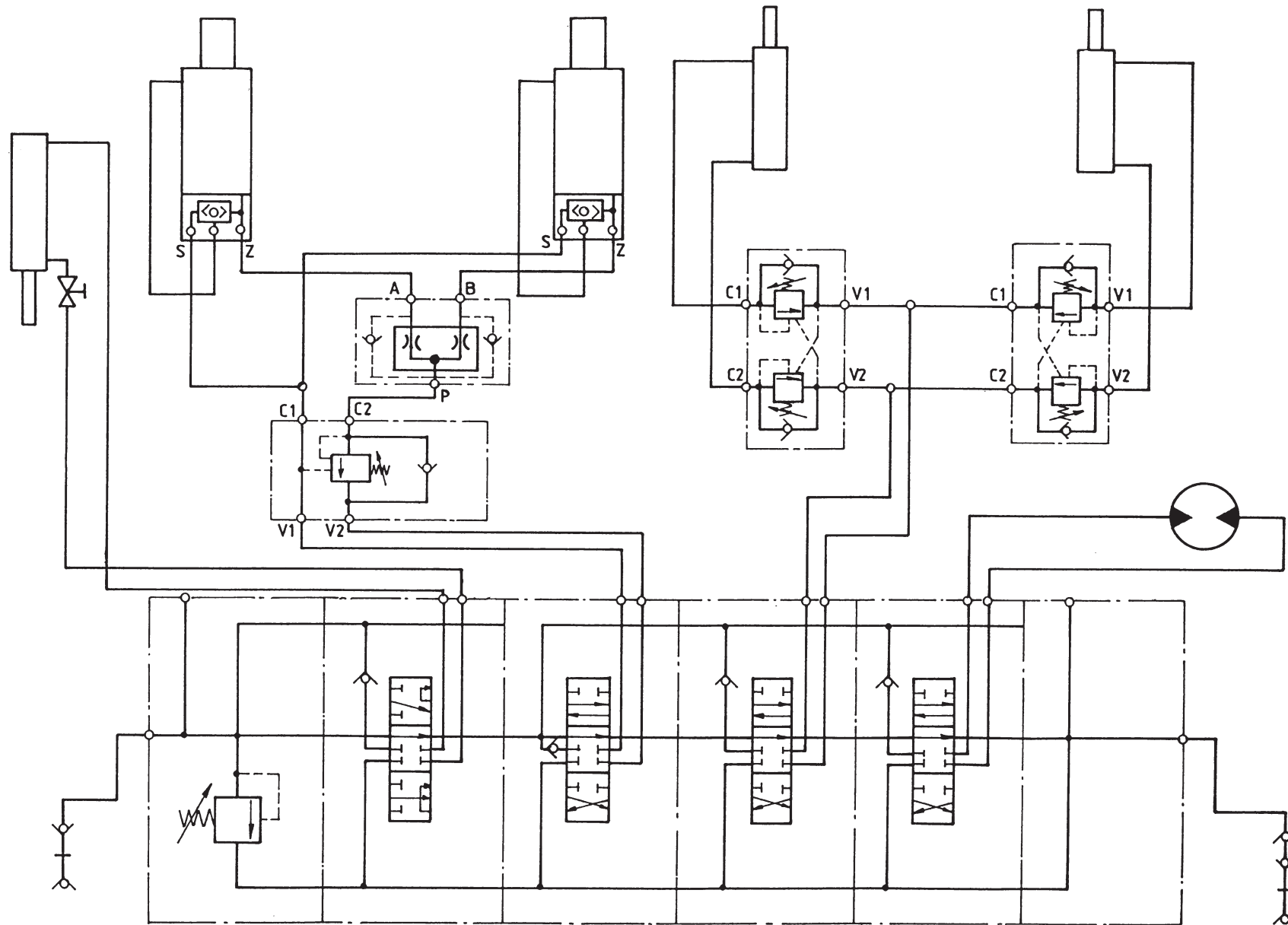


Bestelnummer
 Bestellnummer
 Ordernumber
 Num. a commander

35B	W50748	1	½" 2200 RH 1600
36	53470	2	
37	W50973	2	½" 400 RH
38	X50117	2	
39	X50273	2	

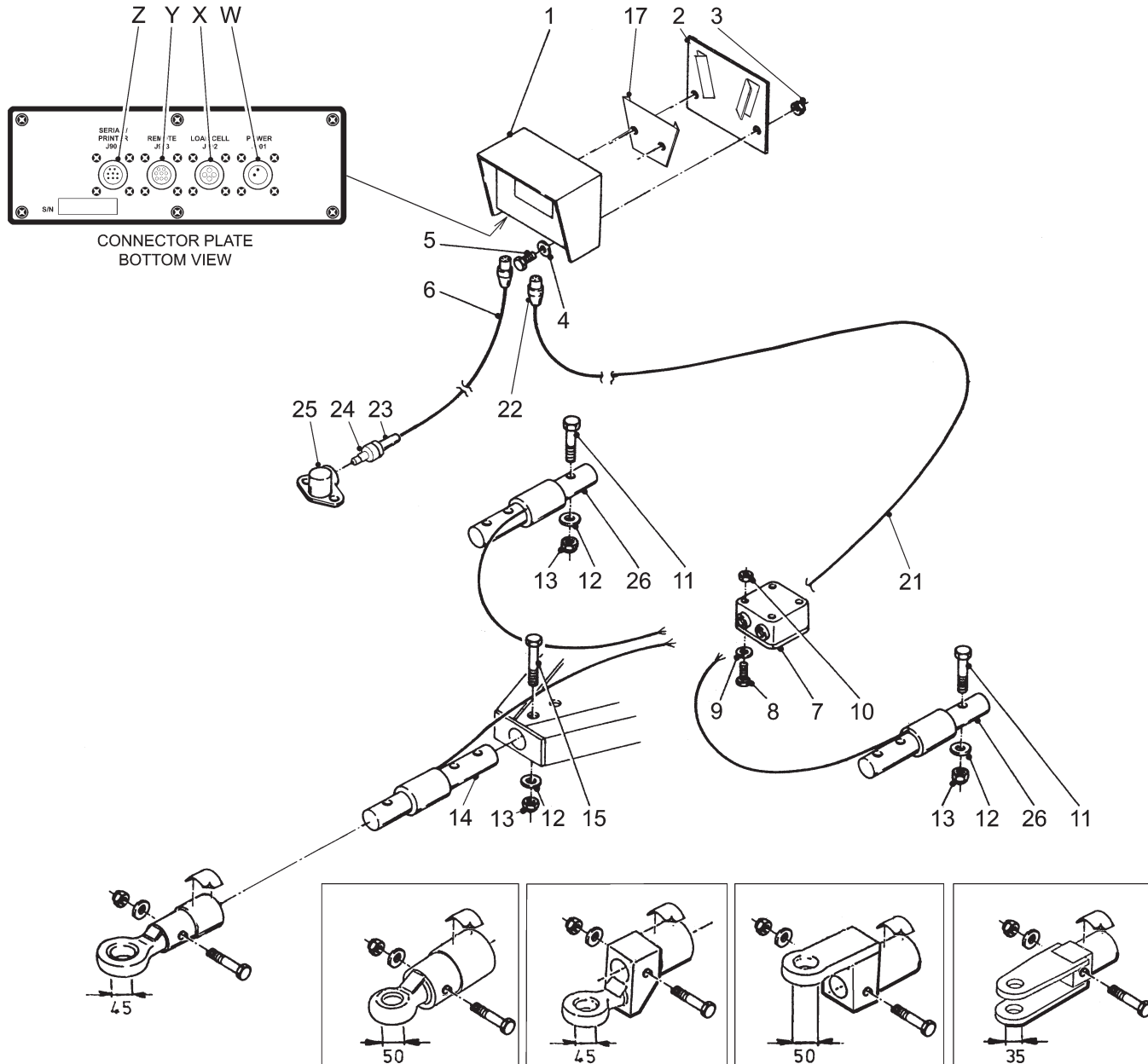
92197/2

Afbeelding 14 : Hydraulisch schema
Abbildung 14 : Hydraulik Plan
Picture 14 : Hydraulics scheme
Illustration 14 : Système hydraulique



92197/2

Afbeelding 15 : Elektronisch weegsystem
 Abbildung 15 : Elektronische Waage
 Picture 15 : Electronic weighing system
 Illustration 15 : Pesée électronique

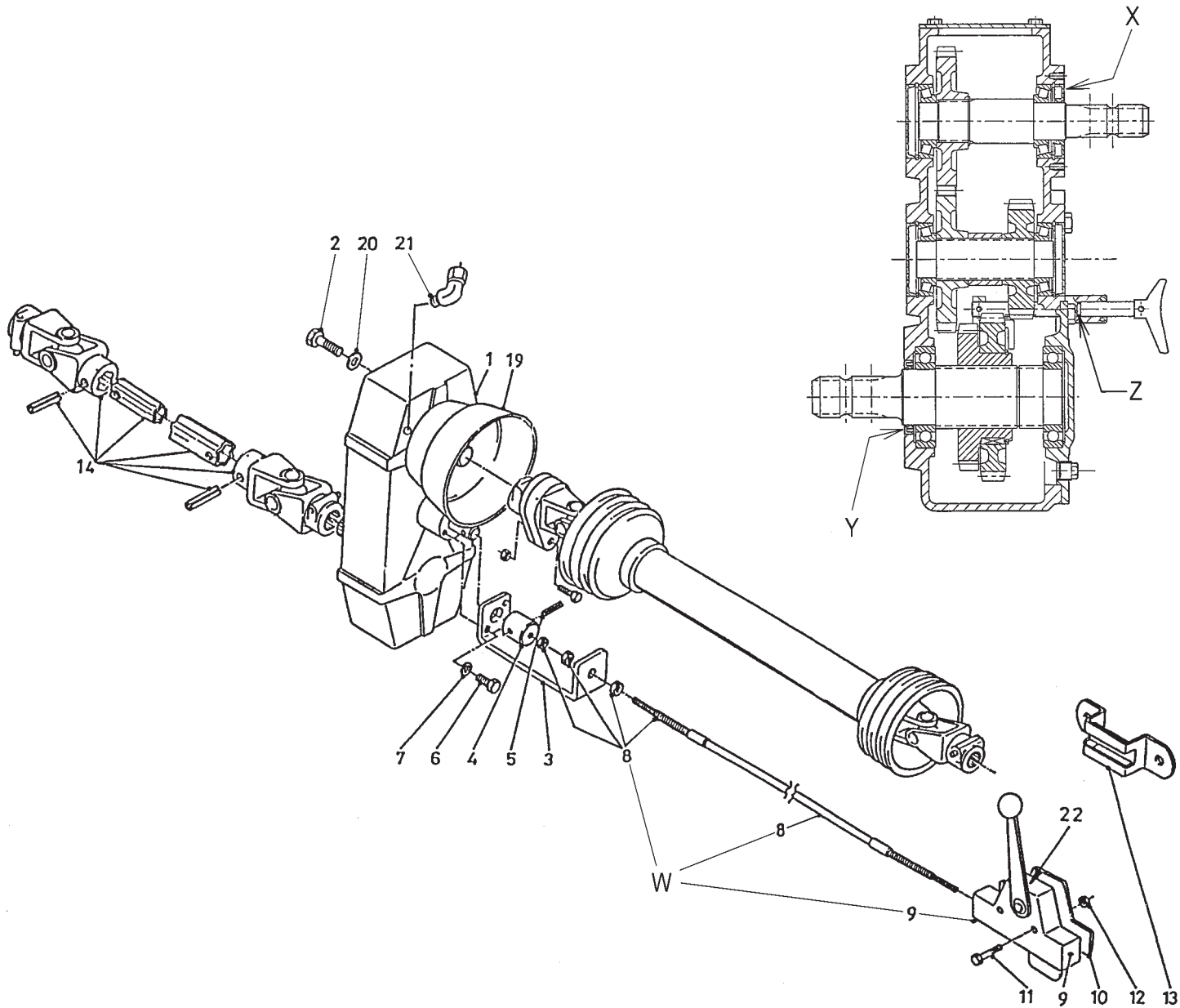


Bestelnummer
 Bestellnummer
 Ordernummer
 Num. a commander

1A	94007	1	EZ 2000
1B	90977	1	EZ 2000 View
1C	94028	1	EZ 2000 R/S
1D	94029	1	EZ 2000 View R/S
1E	94075	1	EZ 3200
1F	94076	1	EZ 3200 View
1G	94077	1	EZ 3200 R/S
1H	94078	1	EZ 3200 View R/S
2	40503	1	
3	86206	2	M6
4	86205	2	M6
5	80621	2	M6 x 20
6	90483	1	
7	90482	1	
8	84445	4	M5 x 20
9	85105	4	M5
10	86205	4	M5
11	82014	4	M20 x 140 12.9
12	85020	6	M20
13	86220	6	M20
14	90447	1	Ø63.5
15	82013	1	M20 x 130 12.9
17	40504	1	
21	90719	1	L=5000
22	98218	1	
23	98239	1	
24	98238	1	
25	98237	1	
26	90841	2	Ø89
W	05389	1	J901
X	05390	1	J902
Y	05510	1	J903
Z	05511	1	J904

92197/2

Afbeelding 16 : Vertragsingskast
 Abbildung 16 : Reduziergetriebe
 Picture 16 : Reduction gearbox
 Illustration 16 : Boîte réductrice



93010F

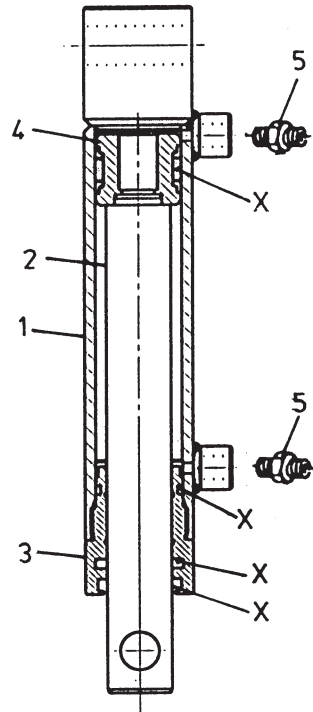
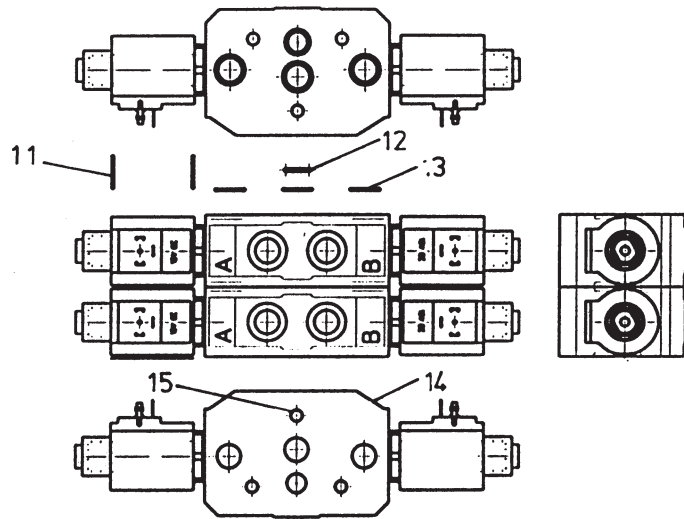
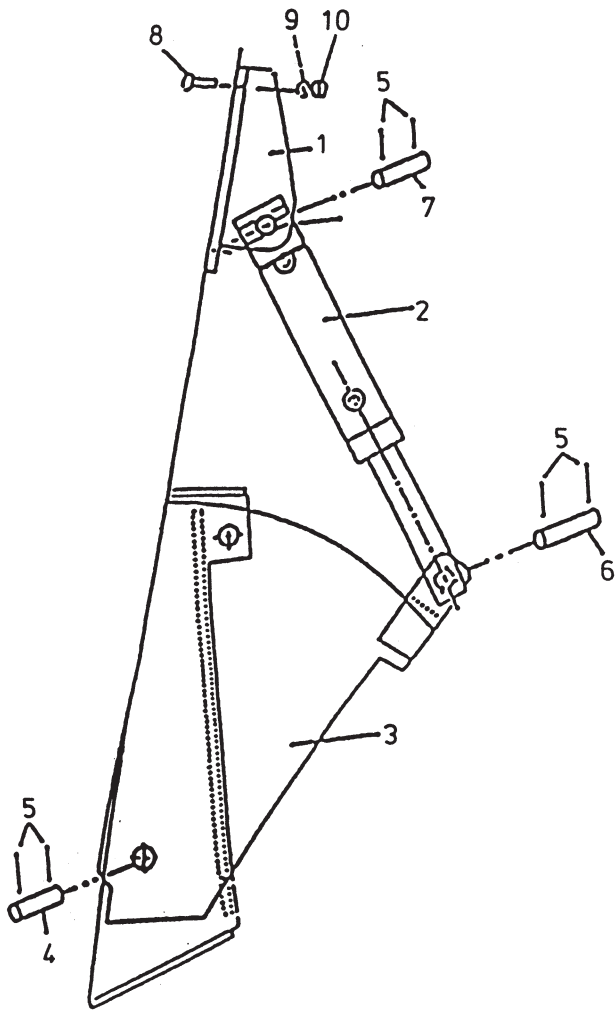
Bestelnummer
 Bestellnummer
 Ordernummer
 Num. a commander

1A	90911	1	GB 1200
1B	94031	1	GB 1600
2	81445	4	M14 x 45
3	25775	1	
4	31781	1	Yellow
5	88027	1	Ø 6 x 26
6	80831	2	M8 x 30
7	85008	2	M8
8	79051	1	L=3000, Yellow
9	90770	1	Yellow
10	10525	1	
11	80630	2	M6 x 30
12	86206	2	M6
13	20199	1	
14	90627	1	1 $\frac{3}{8}$ - 6 / 1 $\frac{3}{4}$ - 6
19	90499	1	
20	85014	1	M14
21	50550	1	90°
22	91336	1	
W	90121	1	Yellow
X	70170	1	40 x 80 x 10
Y	70169	1	60 x 80 x 10
Z	78144	1	10.77 x 2.62/90

93010FL1

92197/2

Afbeelding 17 : Hydraulische bediening conrames
 Abbildung 17 : Hydraulische Fernbedienung Gegenschneide
 Picture 17 : Hydraulic control counter knife
 Illustration 17 : Contre couteaux: commande hydraulique



Bestelnummer
 Bestellnummer
 Ordernummer
 Num. a commander

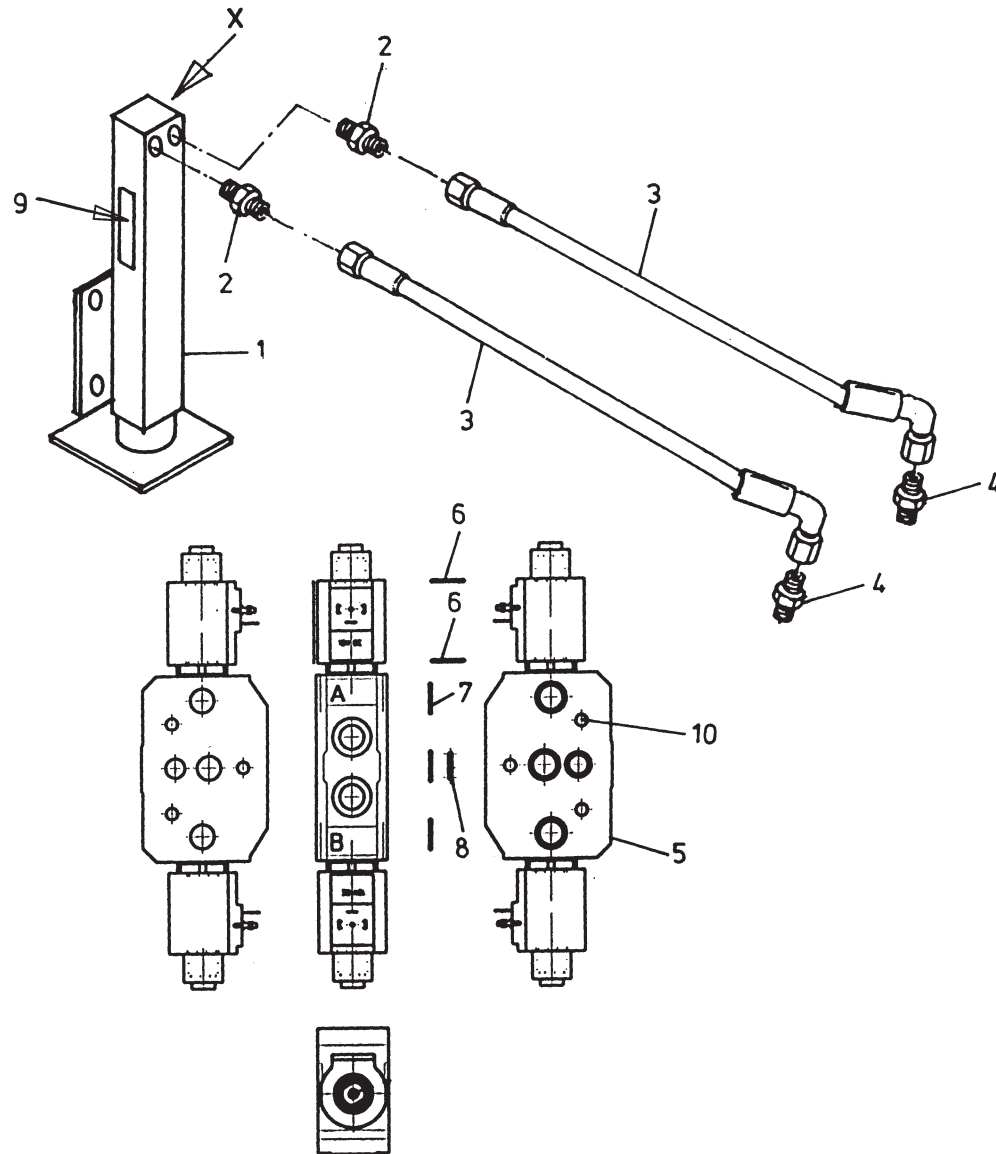
1	12043	1	
2	51196	1	
3	12039	1	
4	25332	1	
5	88239	6	Ø5 x 40
6	25607	1	
7	25606	1	
8	84808	2	M12 x 30
9	85112	2	M12
10	86212	2	M12
11	78062	4	18.77 x 1.78/70
12	78133	1	14 x 1.78/70
13	78122	3	17.17 x 1.78/70
14	53280	1	
15	84044	3	M6 x 275

51196 H = 110

1	12843	1	
2	32207	1	
3	31460	1	
4	30860	1	
5	X50104	2	
X	05309	1	

92197/2

Afbeelding 18 : Hydraulische bediening steunpoot
 Abbildung 18 : Hydraulische Fernbedieung Stützfuß
 Picture 18 : Hydraulic control support
 Illustration 18 : Béguille: commande hydraulique

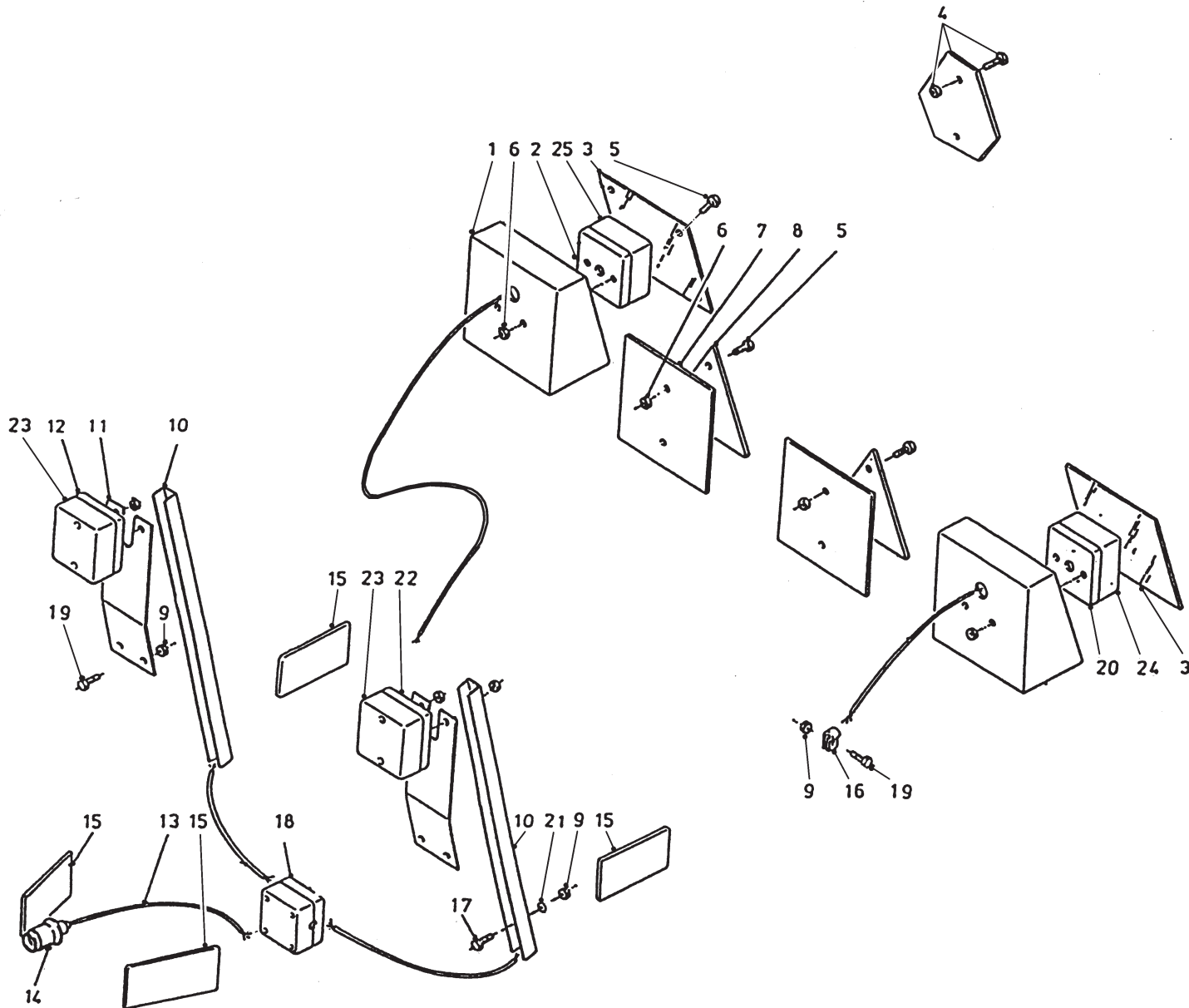


Bestelnummer
 Bestellnummer
 Ordernummer
 Num. a commander

1	12029	1
2	X50124	2
3	W50956	2 1/4" 4200 RH
4	X50114	2
5	53280	1
6	78062	4 18.77 x 1.78/70
7	78122	3 17.17 x 1.78/70
8	78133	1 14 x 1.78/70
9	91334	1
10	84045	3 M6 x 240

92197/2

Afbeelding 19 : Verlichtingset
Abbildung 19 : Beleuchtungssatz
Picture 19 : Lighting set
Illustration 19 : Jeu d'éclairage

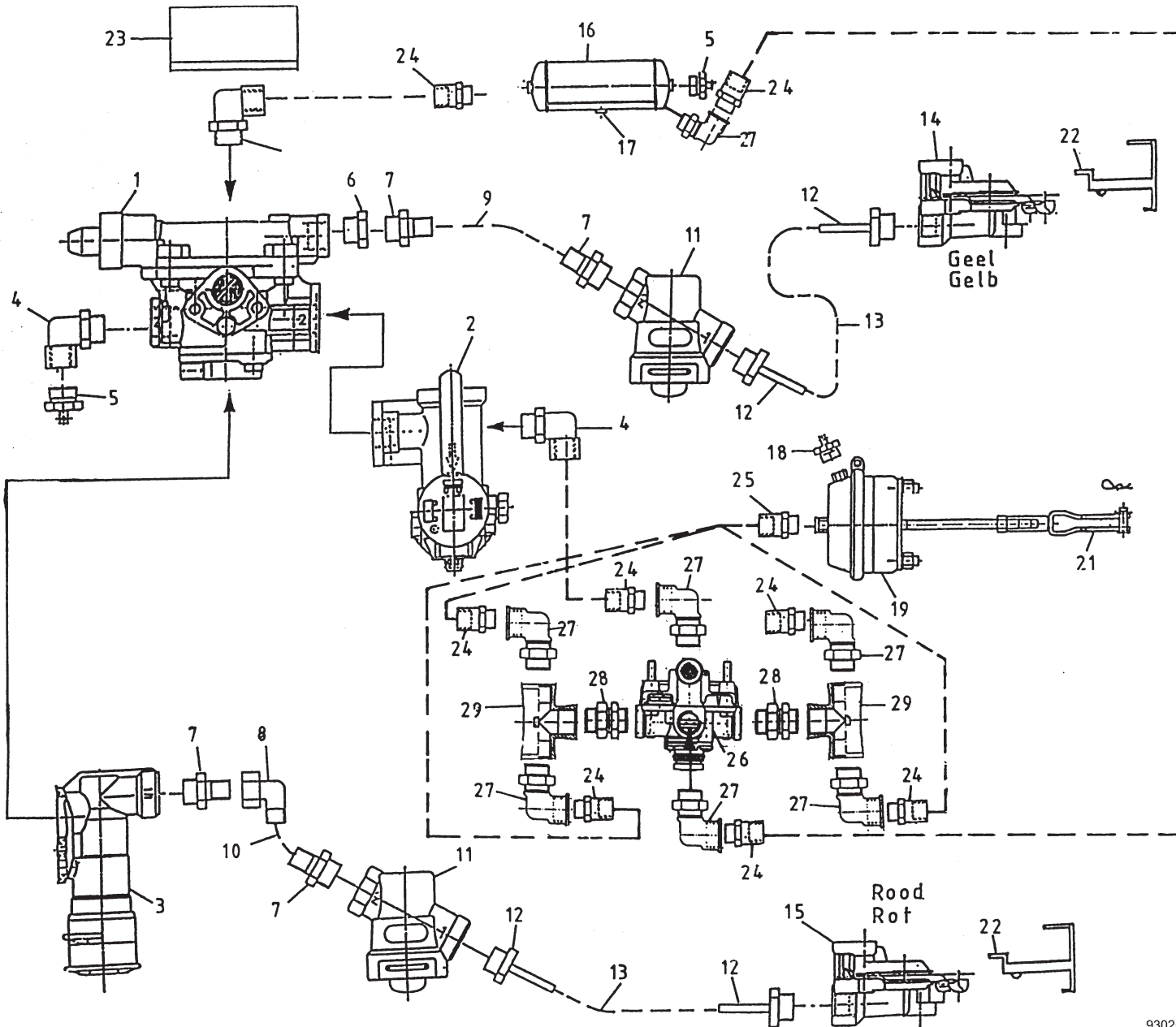


Bestelnummer
Bestellnummer
Ordernummer
Num. a commander

1	12294	2
2	98139	1 Behind/Right
3	60321	2
4	90411	1
5	84134	12 M5 x 20
6	86205	12 M5
7	26528	2
8	90410	2
9	86206	16 M6
10	40607	2
11	40581	2
12	98138	2 Front/Right
13	98137	1 L=4m
14	98007	1
15	90412	4
16	90457	4
17	80635	4 M6 x 35
18	98141	1
19	80616	12 M6 x 16
20	98140	1 Behind/Left
21	85106	4 M6
22	98257	1 Front/Left
23	98258	2 Front/Left-Right
24	98259	1 Behind/Left
25	98260	1 Behind

92197/2

Afbeelding 20 : Pneumatisch remsysteem
 Abbildung 20 : Druckluftbremse
 Picture 20 : Air brake system
 Illustration 20 : Freinage pneumatique

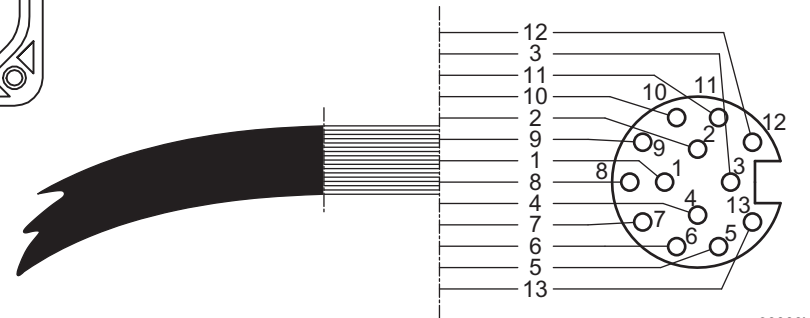
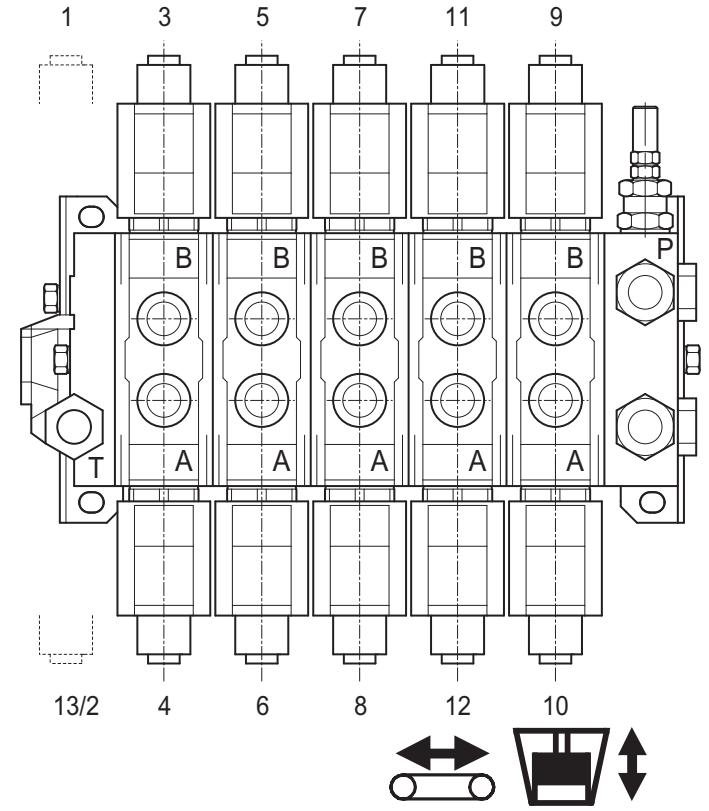
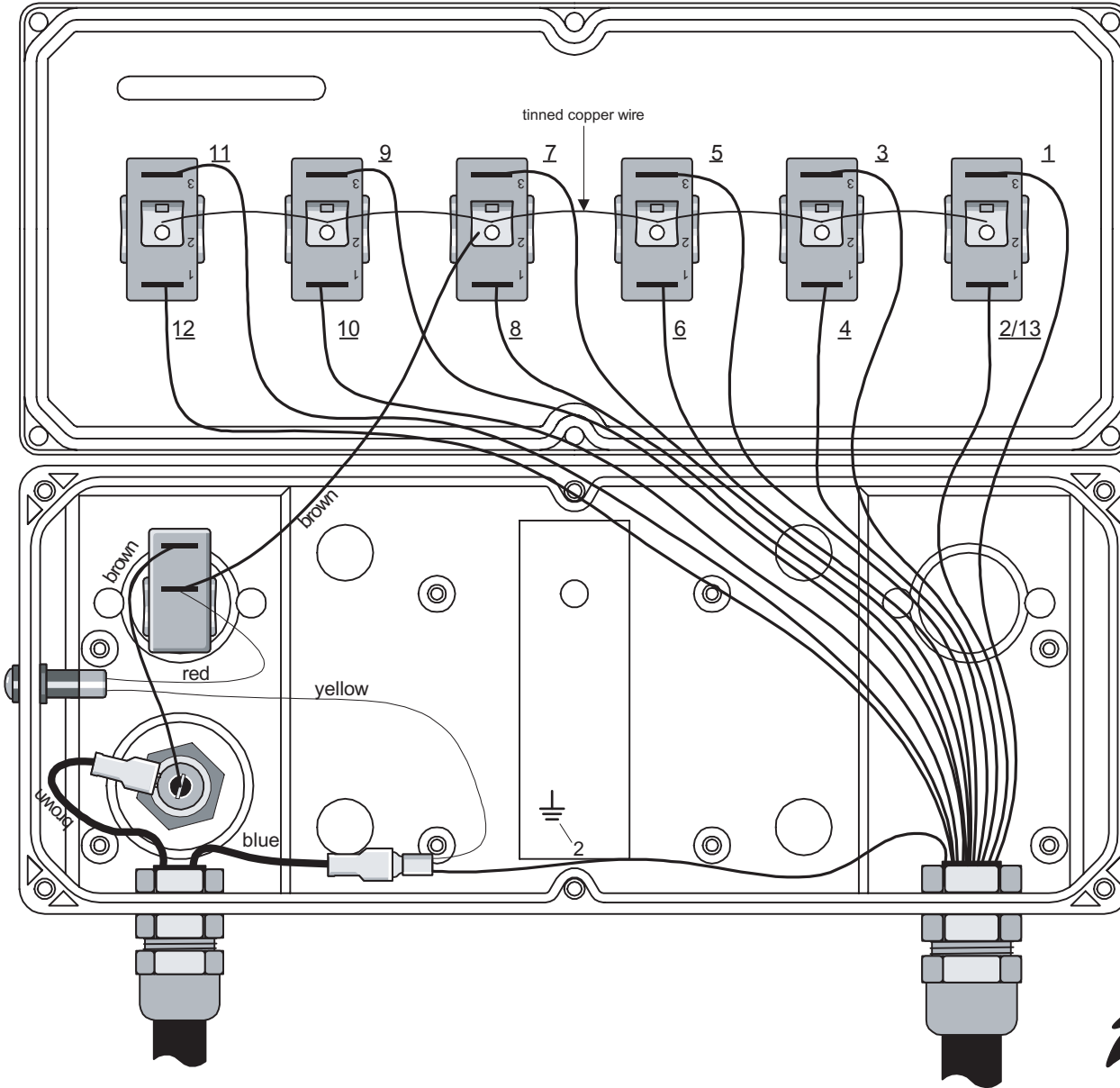


Bestelnummer
 Bestellnummer
 Ordernummer
 Num. a commander

1	53339	1
2	53341	1
3	53340	1
4	50188	3
5	53344	2
6	50186	2
7	50111	4
8	50112	1
9	52610	1
10	52611	1
11	53338	2
12	53337	4
13	50990	2
14	53335	1
15	53336	1
16	94123	1
17	53342	1
18	53348	4
19	94015	4 20"
21	05388	4
22	90680	2
23	26531	1
24	50184	5
25	50185	4
26	53351	1
27	50188	6
28	50297	2
29	50298	2

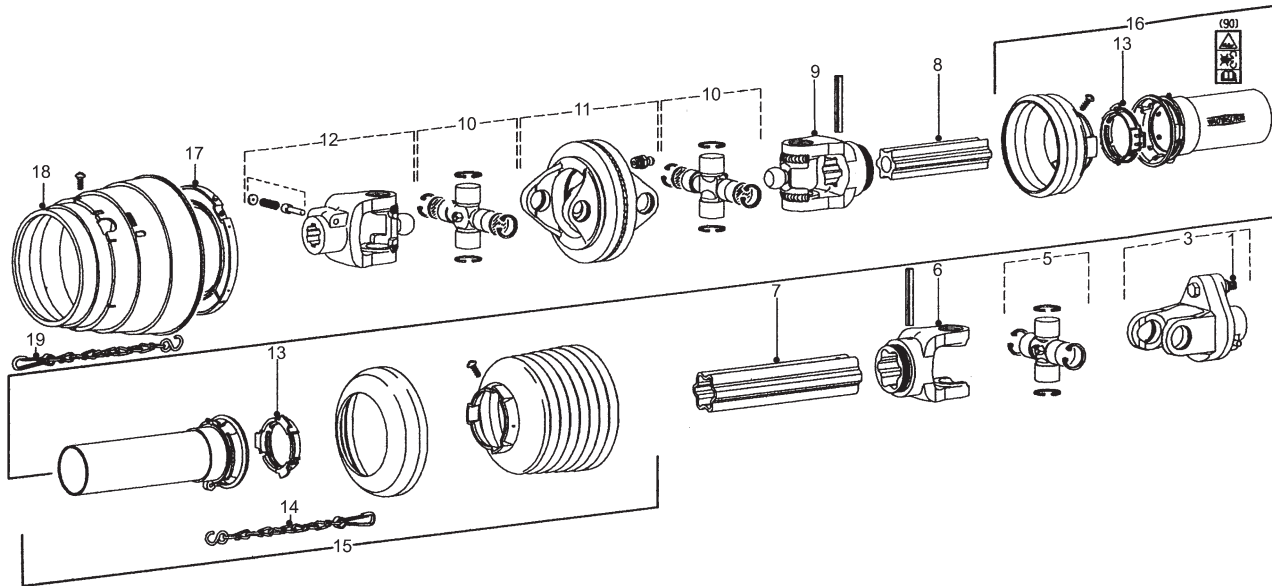
92197/2

- Afbeelding 21 : Elektrische bedieningskast en ventilaansluitschema
- Abbildung 21 : Elektrische Bedienungskasten und Ventilschaltplan
- Picture 21 : Electrical control box and valve scheme
- Illustration 21 : L'armoire de commande électrique et schéma de connection



92197/2

Afbeelding 22A : Aftakas Triomix S-2 1200
 Abbildung 22A : Gelenkwelle Triomix S-2 1200
 Picture 22A : PTO shaft Triomix S-2 1200
 Illustration 22A : Arbre de prise de force Triomix S-2 1200



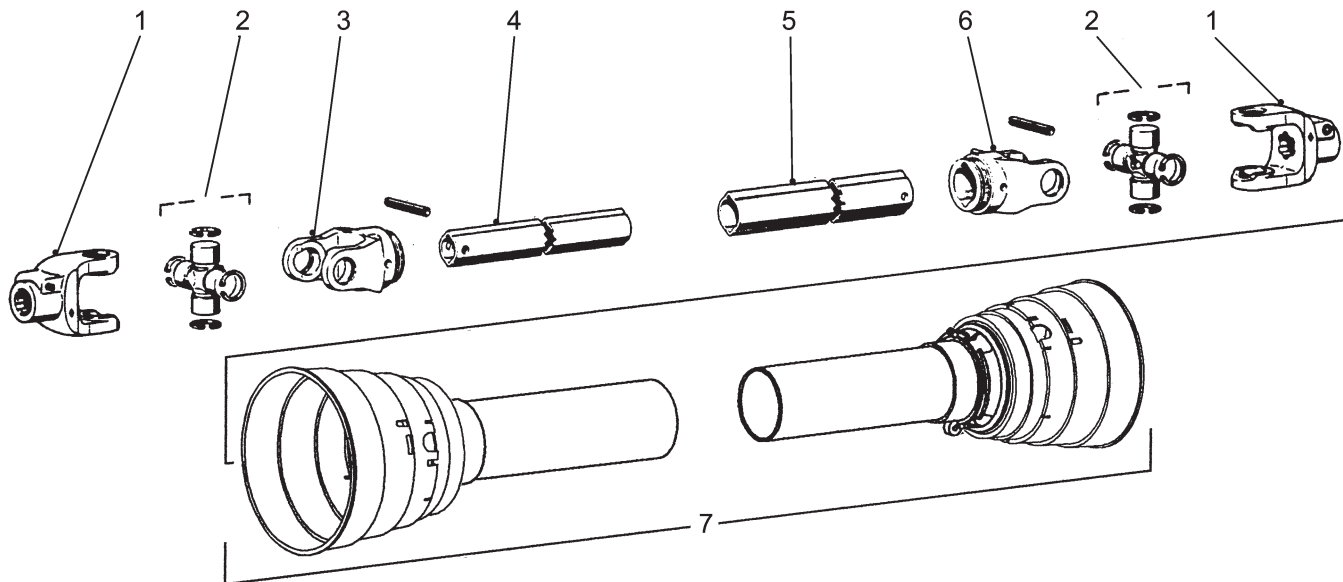
93004L

Bestelnummer
 Bestellnummer
 Ordernummer
 Num. a commander

90495 L=1210 WWE 2480

1	80860	1	M8 x 60 8.8
3	94063	1	1 ³ / ₈ - 6
5	90582	1	
6	94071	1	
7	90935	1	
8	90938	1	
9	94084	1	
10	94066	2	
11	90812	1	
12	90626	1	1 ³ / ₈ - 6
13	90619	2	
14	90266	1	
15	94058	1	
16	94099	1	
17	94064	1	
18	94065	1	
19	94062	1	

93004LL3



93006L

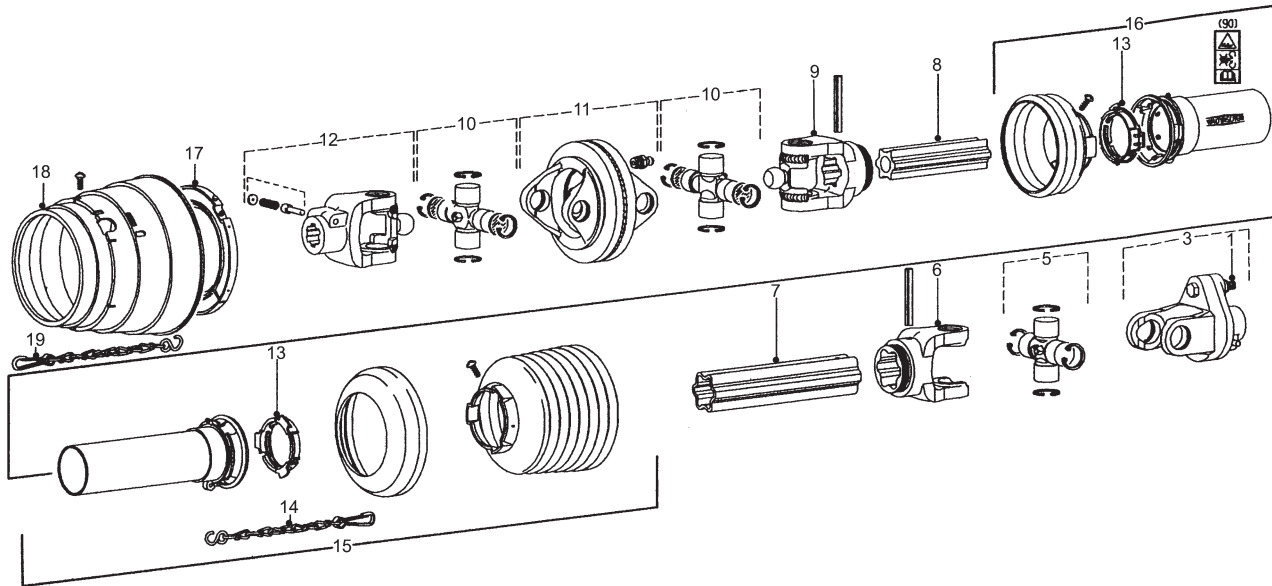
94204 L=1050 W2400

1	90730	2	1 ³ / ₈ - 6
2	90729	2	
3	94231	1	
4	90958	1	
5	90959	1	
6	94232	1	
7	94334	1	Complete

93006LL1

92197/2

Afbeelding 22B : Aftakas Triomix S-2 1600
 Abbildung 22B : Gelenkwelle Triomix S-2 1600
 Picture 22B : PTO shaft Triomix S-2 1600
 Illustration 22B : Arbre de prise de force Triomix S-2 1600



93004L

Bestelnummer
 Bestellnummer
 Ordernumber
 Num. a commander

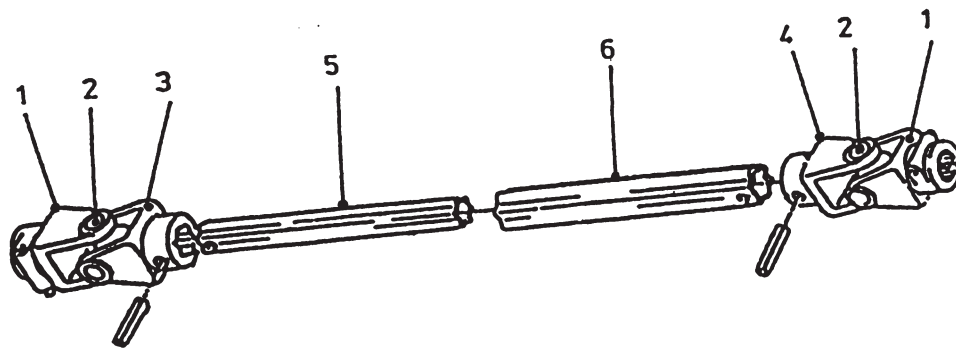
90496 L=1210 WWE 2580

1	81060	1	M10 x 60 8.8
3	90912	1	1 ³ / ₄ - 6
5	90914	1	
6	90915	1	
7	90916	1	
8	90923	1	
9	90924	1	
10	94085	2	
11	90925	1	
12	90926	1	1 ³ / ₈ - 6
13	90619	2	
14	90266	1	
15	94101	1	
16	94102	1	
17	94069	1	
18	94070	1	
19	94062	1	

93004LL4

90903 L=1300 W2500

1	90562	2	1 ³ / ₄ - 20
2	90561	2	
3	90607	1	
4	90606	1	
5	90933	1	
6	90934	1	



93002L

93002LL2



Hinmanweg 19
7575 BE Oldenzaal - Holland
Postbus 134
7570 AC Oldenzaal - Holland

e-mail: info@trioliet.nl
<http://www.trioliet.nl>

Tel.: 0541 - 57 21 21 / (+) 31 - 541 - 57 21 21
Fax: 0541 - 57 21 25 / (+) 31 - 541 - 57 21 25

Voor onderdelen / Für Ersatzteile / For spare parts / pour pièces de rechange

Tel.: 0541 - 57 21 36 / (+) 31 - 541 - 57 21 36
Fax: 0541 - 57 21 40 / (+) 31 - 541 - 57 21 40