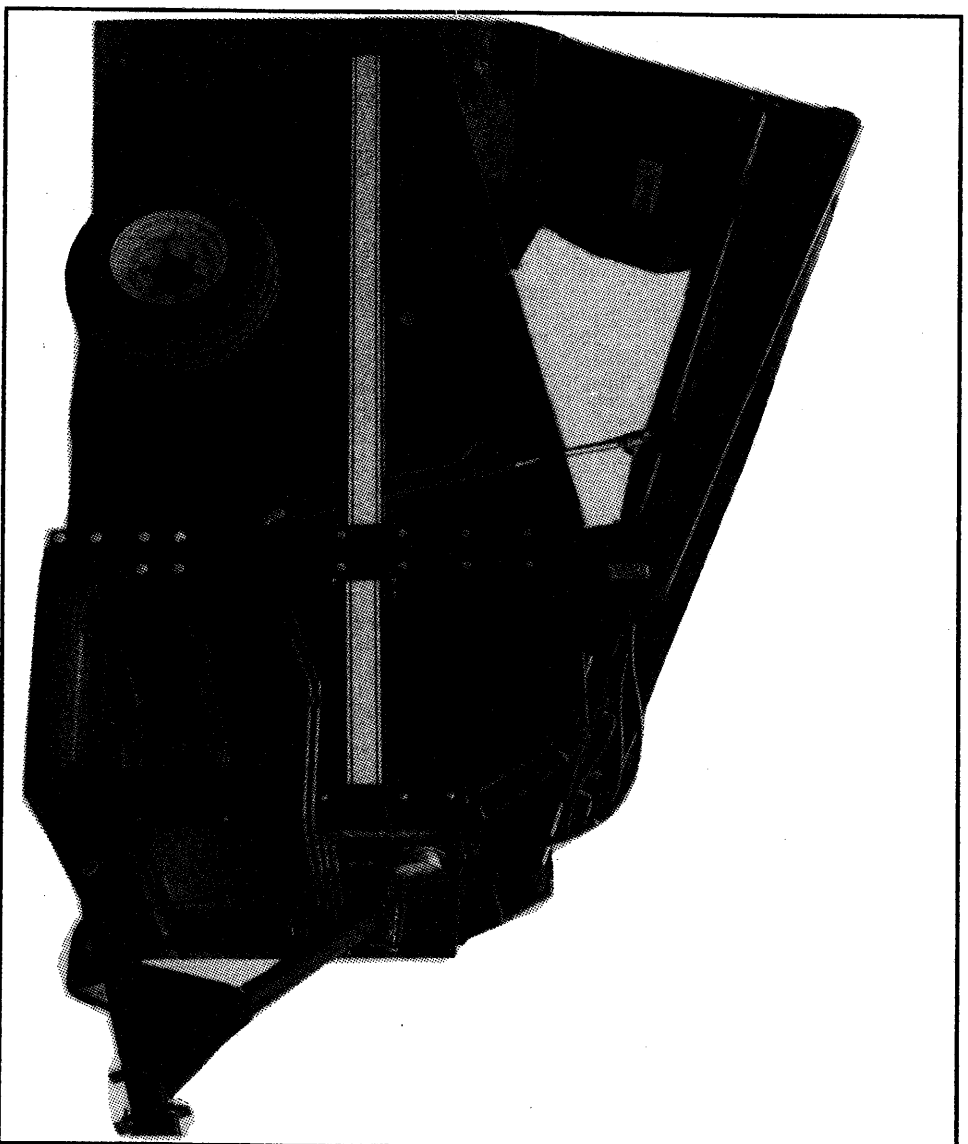




*Trioliet Mullos  
Uitkildoseerwagen*

**UKW 5000**



*Onderdelenlijst / Ersatzteilliste  
Sparepartlist / Liste de pièces de réchange*

*Bestelnummer / Bestellnummer 92026 / 2*

*Geldig vanaf productieserie nr. / Gültig ab Prod. Series No.: 01*

## INHOUDSOPGAVE

Stickers .....	1
Frame .....	2
Zijbeplating .....	3
Wielstel .....	4
Voorbeplating .....	5
Dissel .....	6
Aanvoerband .....	7
Opvoerband .....	8
Dwarband .....	9
Laadrichting .....	10
Snijsysteem .....	11
Krabbord .....	12
Slangen snijbord .....	13
Stuurventielblok .....	14
Hydraulische slangen .....	15/16
Mechanische bediening .....	17
Elektrische bediening .....	18
Omkastng bediening .....	19
Mesclinder .....	20
Disselcylinder .....	21
Aanzet- en intrekclinder .....	22
Wielarmcylinder .....	23
Elektronisch weegsteeem .....	24
Pomp unit .....	25
Schakelschema mechanische bediening snijsysteem .....	26
Schakelschema elektrische bediening snijsysteem .....	27
Schakelschema mechanische bediening krabbord .....	28
Schakelschema elektrische bediening krabbord .....	29
Schakelschema snijsysteem .....	30

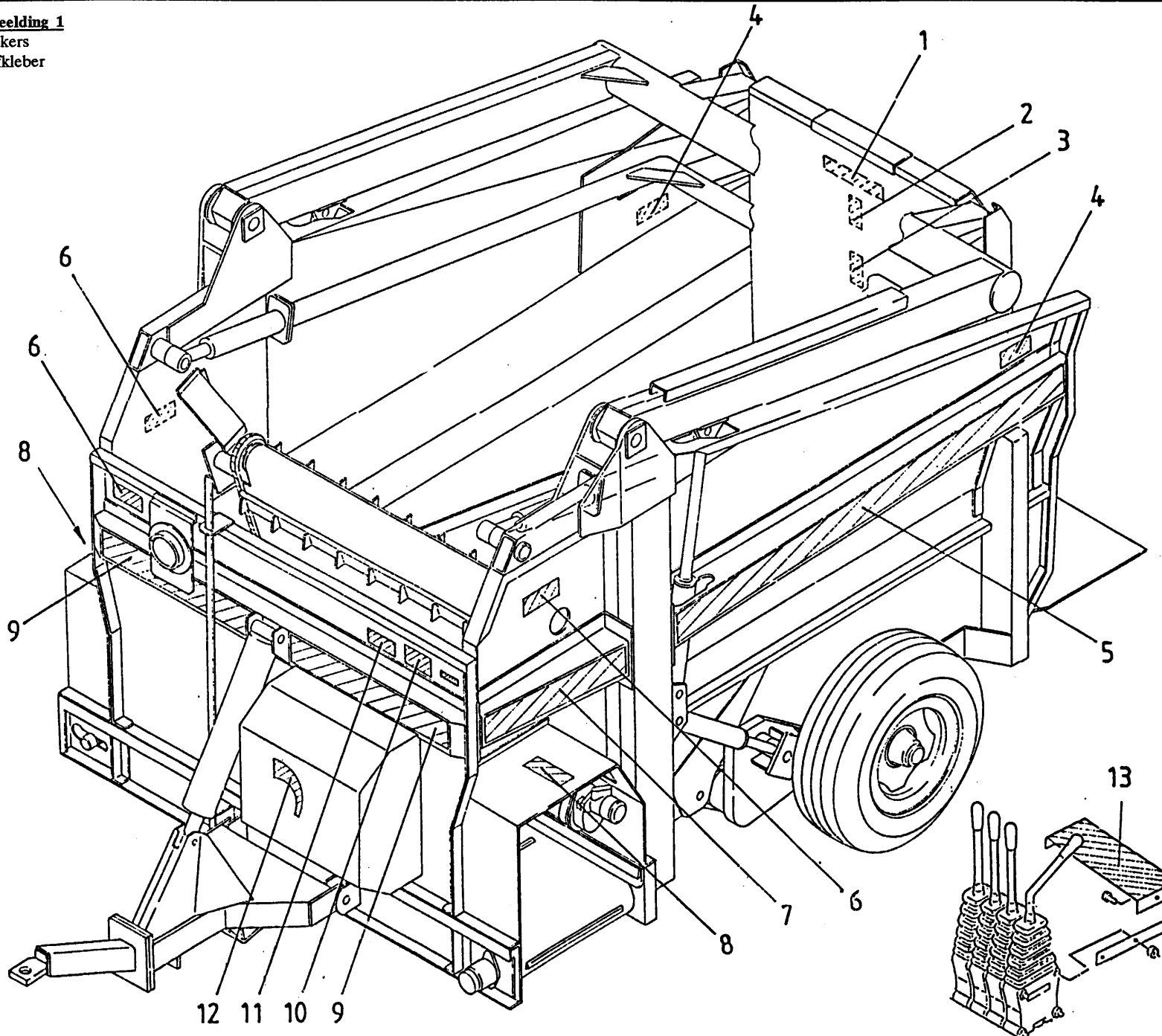
AFB.

## INHALT

Aufkleber .....	1
Grundrahmen .....	2
Seitenwände .....	3
Radachse .....	4
Vorwand .....	5
Dechsel .....	6
Bodenkette .....	7
Schrägförderkette .....	8
Seitentransportband .....	9
Laadsystem .....	10
Schneidplatte .....	11
Silokamm .....	12
Schläuche Schneidsystem .....	13
Ventilblock .....	14
Hydraulik Schläuche .....	15/16
Mechanische Fernbedienung .....	17
Elektrische Fernbedienung .....	18
Schutzkappe Fernbedienung .....	19
Messerzylinder .....	20
Dechselzylinder .....	21
Schneidrahmenzylindern .....	22
Radarmzylinder .....	23
Elektronische Waage .....	24
Pumpeinheit .....	25
Schalplan mechanische Fernbedienung Schneidsystem .....	26
Schalplan elektrische Fernbedienung Schneidsystem .....	27
Schalplan mechanische Fernbedienung Silokamm .....	28
Schalplan elektrische Fernbedienung Silokamm .....	29
Schalplan Schneidsystem .....	30

ABB.

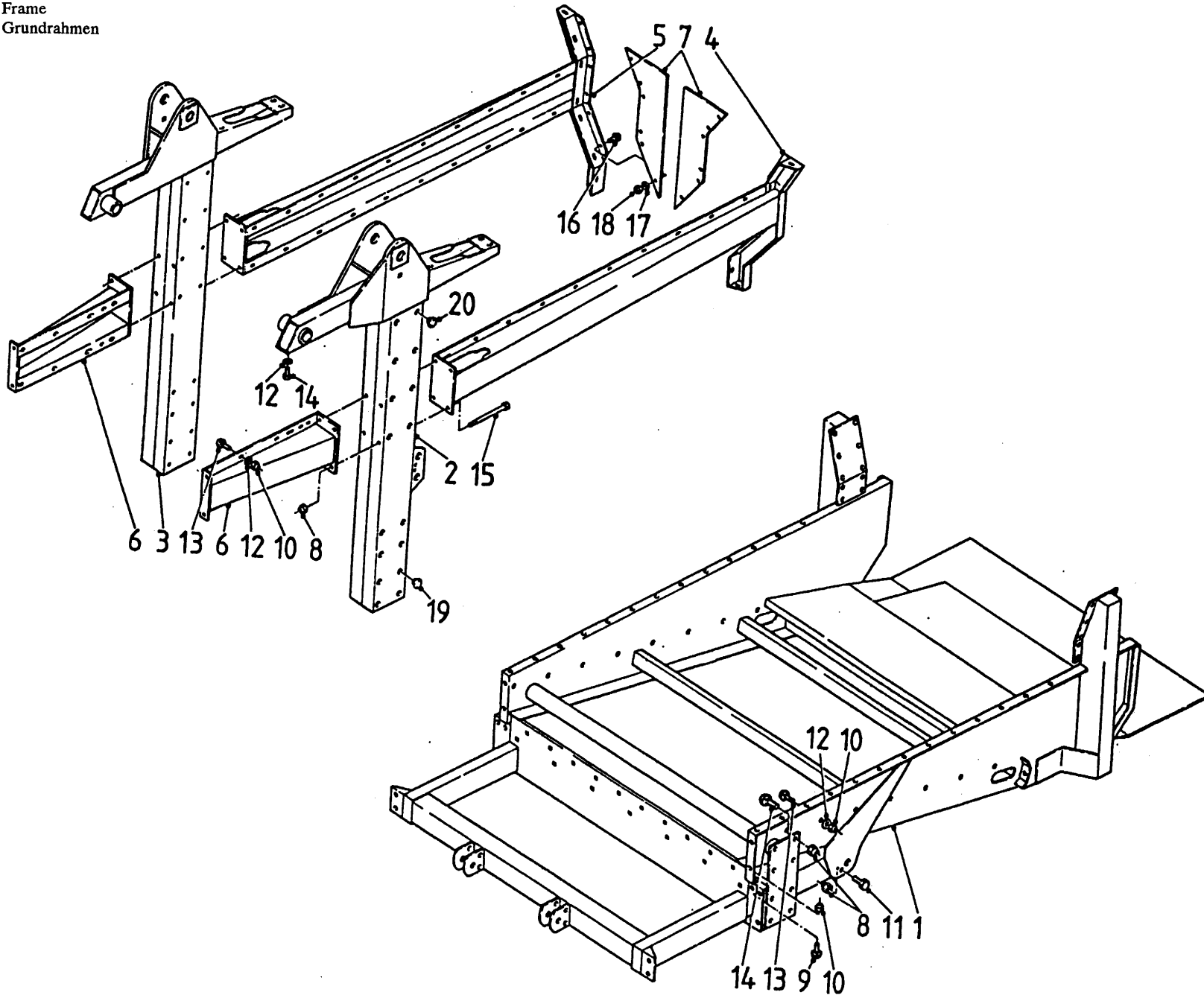
**Afbeelding 1**  
 Stickers  
 Aufkleber



bestelnummer  
 ordernummer  
 num.à commander  
 Bestellnummer

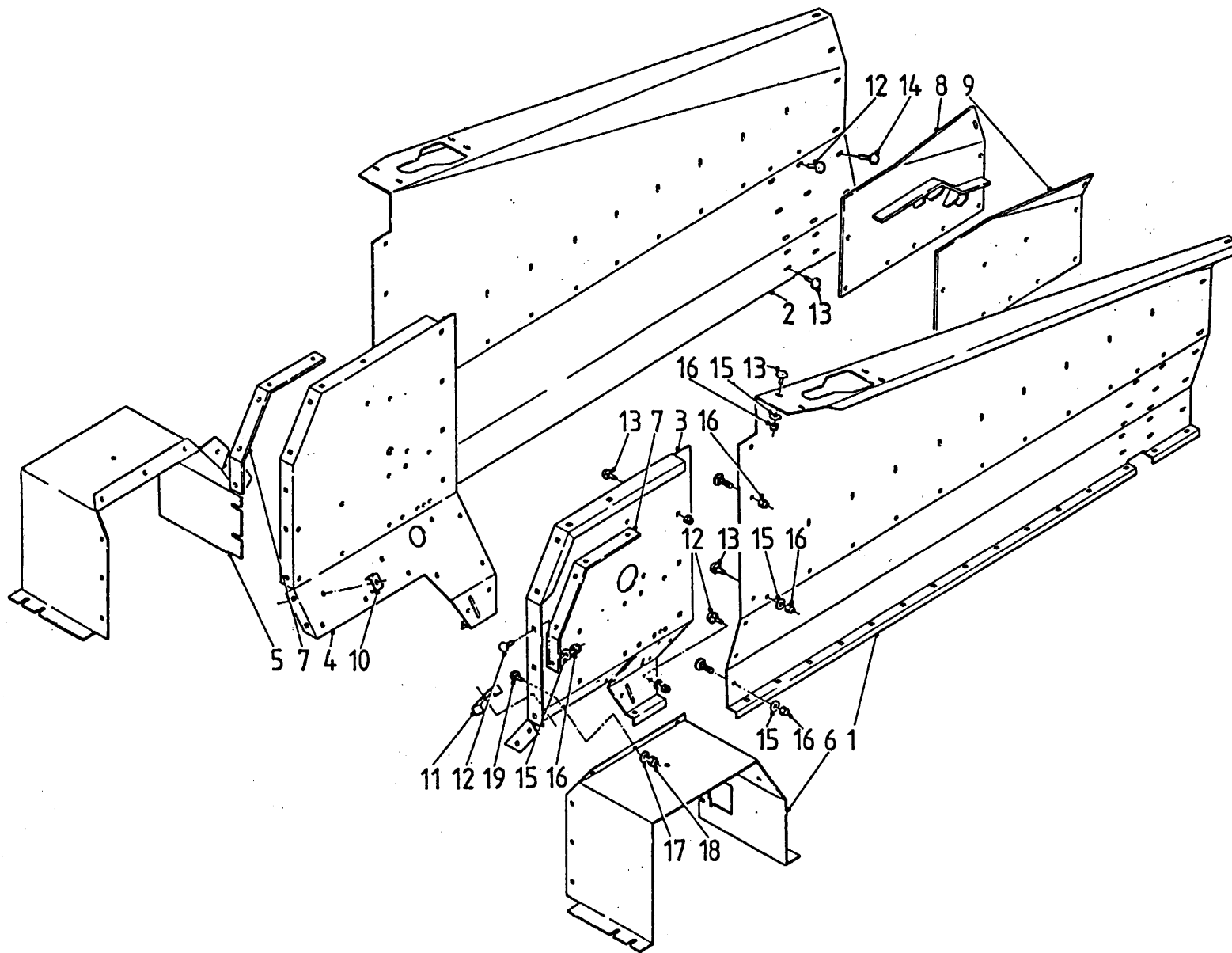
1	91007	
2	91153	1
3	91163	1
4	91161	2
5	91169	2
6	91164	3
7	91167	2
8	91162	2
9	91166	2
10	91160	1
11	91159	1
12	91165	1
13	91168	1

Afbeelding 2  
Frame  
Grundrahmen



Bestellnummer	num.à commander	ordernummer	bestelnummer
1	1	10864	1
2	1	10852	1
3	1	10853	1
4	1	10919	1
5	1	10920	1
6	2	10914	2
7	2	30787	2
8	26	86512	M12
9	4	83125	M10x25
10	36	86510	M10
11	2	81231	2
12	36	85110	36
13	22	83120	M10x20
14	4	84703	M10x20
15	8	81222	M12x210
16	12	83621	M6x22
17	12	85106	12
18	12	86506	M6
19	16	60167	16
20	16	60166	16

**Afbeelding 3**  
 Zijbeplating  
 Seitenwände



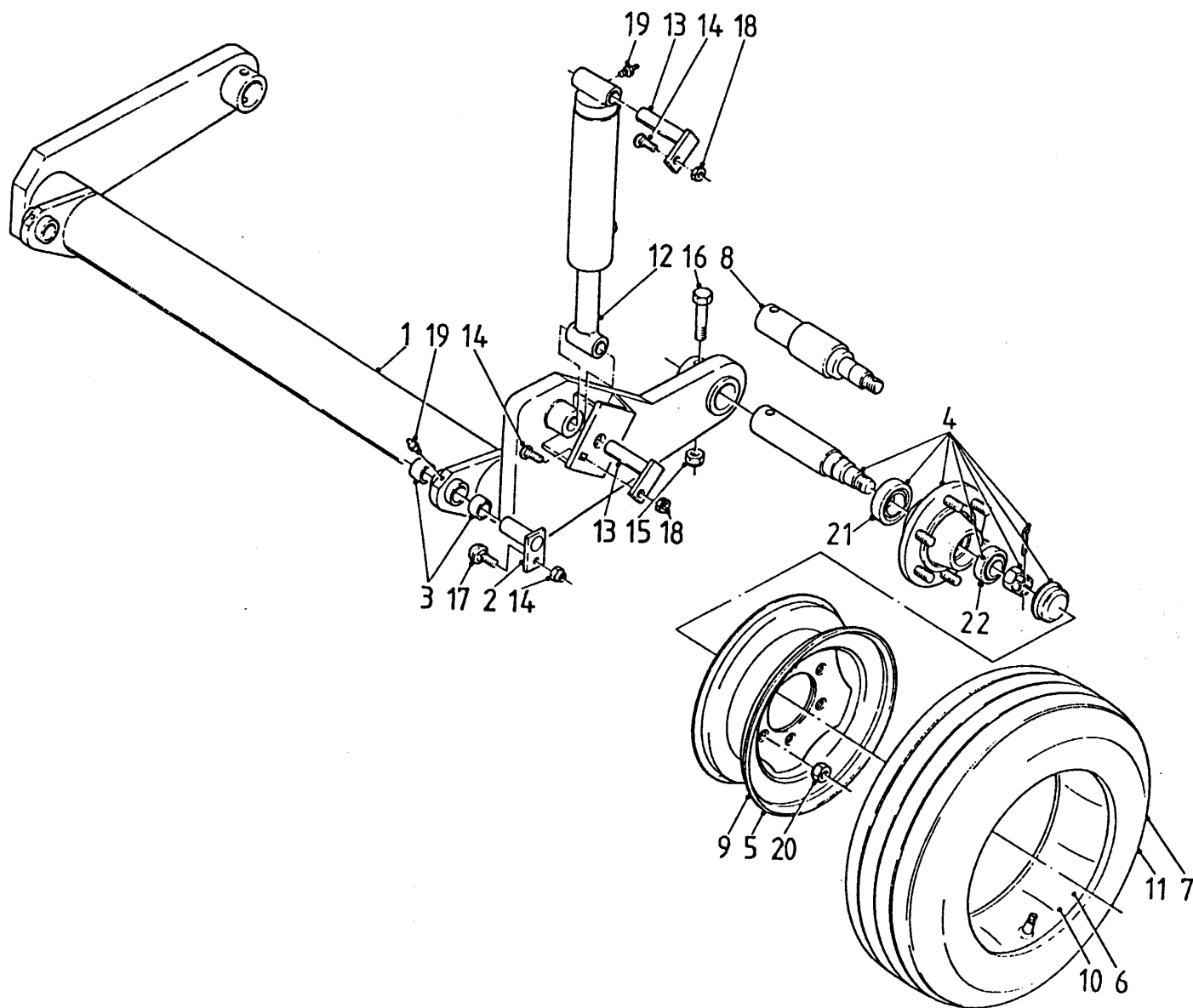
bestelnummer  
 ordernummer  
 num.à commander  
 Bestellnummer

1	22074	1
2	22073	1
3	22084	1
4	22085	1
5	40252	1
6	40251	1
7	UE385	2
8	10925	1
9	10924	1
10	22091	3
11	22089	2
12	83125	26 M10x25
13	83120	64 M10x20
14	83136	2 M10x35
15	85110	55
16	86510	104 M10
17	85108	6
18	86508	6 M8
19	83816	6 M8x16

**Afbeelding 4**

Wielstel

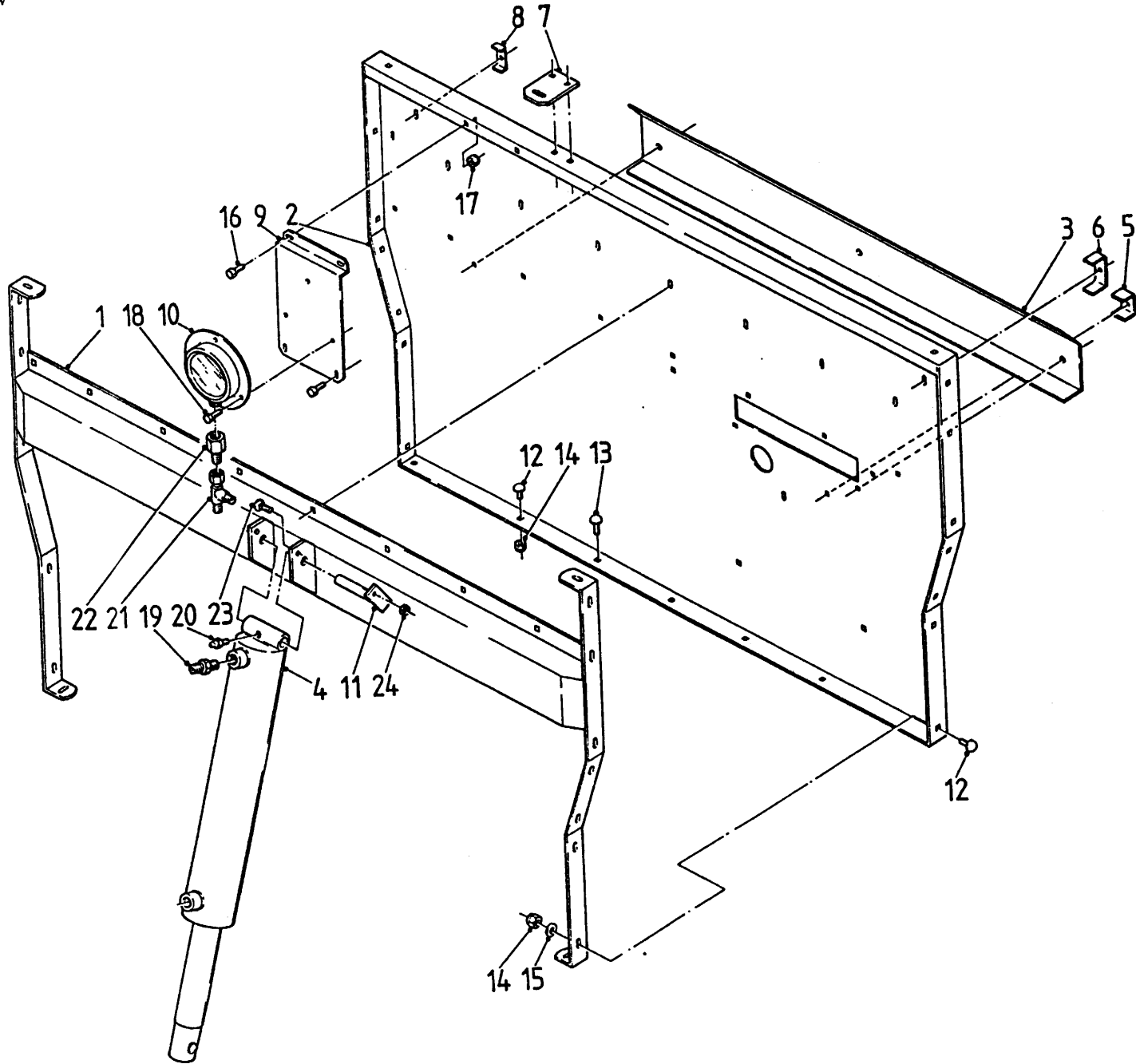
Radachse



bestelnummer  
 ordernummer  
 num.à commander  
 Bestellnummer

1	10904	1
2	UE060	2
3	UE452	4
4	90150	2
5	90153	2
6	90152	2
7	90151	2
8	90169	2
9	90156	2
10	90155	2
11	90154	2
12	50076	1
13	10917	1
14	86512	3 M12
15	86516	2 M16
16	81610	2 M16X100
17	83231	2 M12X30
18	81235	1 M12X35
19	89503	4 M6
20	86119	12 M18X1,5
21	70057	2 30211
22	70056	2 30208

**Afbeelding 5**  
 Frontaanbouw  
 Vorwand

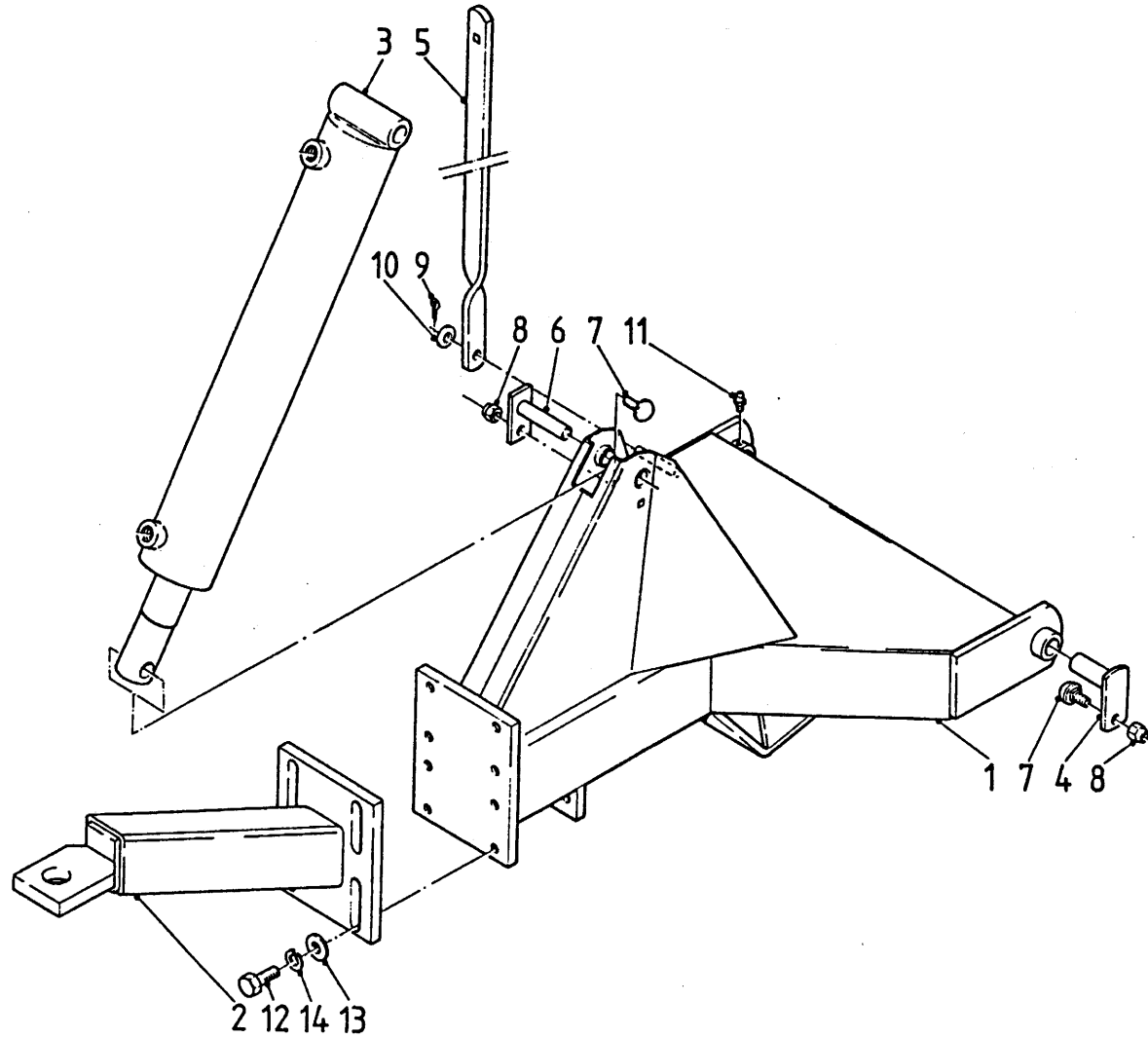


bestelnummer	ordernummer	num.à commander	Bestellnummer
1	10922	1	
2	22078	1	
3	40254	1	
4	UE00200	1	
5	22226	1	
6	22090	1	
7	UE343	1	
8	22091	1	
9	UE414	1	
10	UE404	1	
11	UE0236	1	
12	83125	20	M10x25
13	83120	3	M10x20
14	86510	23	M10
15	85110	18	
16	80821	4	M8x20
17	86508	4	M8
18	84703	4	M10x20
19	50104	2	
20	89503	1	
21	50415	1	
22	50300	1	

**Afbeelding 6**

Dissel

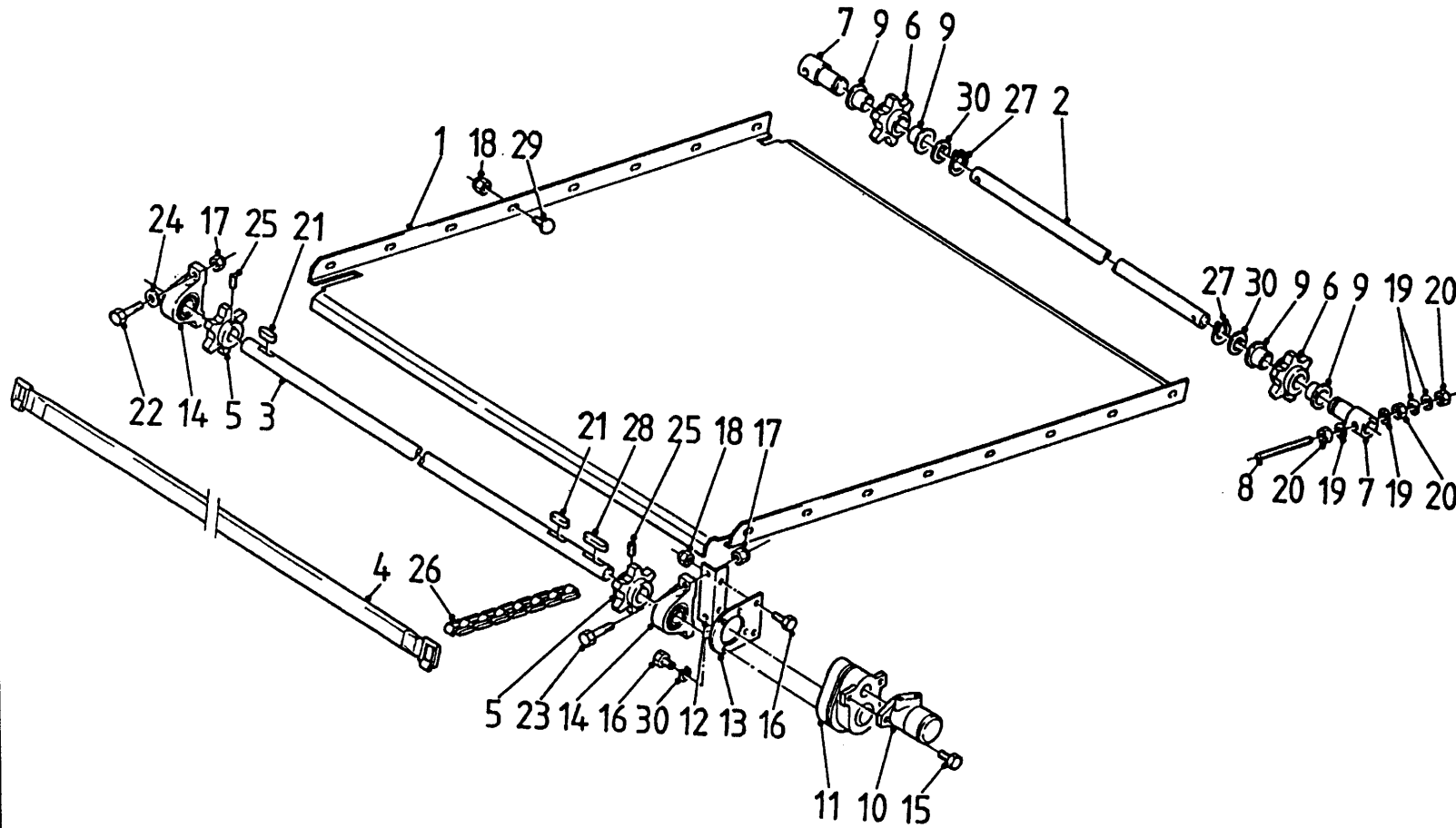
Deichsel



bestelnummer	ordernummer	num.à commander	Bestellnummer
1	10935	1	
2	10980	1	
3	UE00200	1	
4	UE0287	2	
5	22224	1	
6	UE0236	1	
7	83125	3	M10x25
8	86510	3	M10
9	85112	1	
10	88225	1	
11	89503	2	
12	83650	4	M16x50
13	85116	4	
14	86516	4	M16

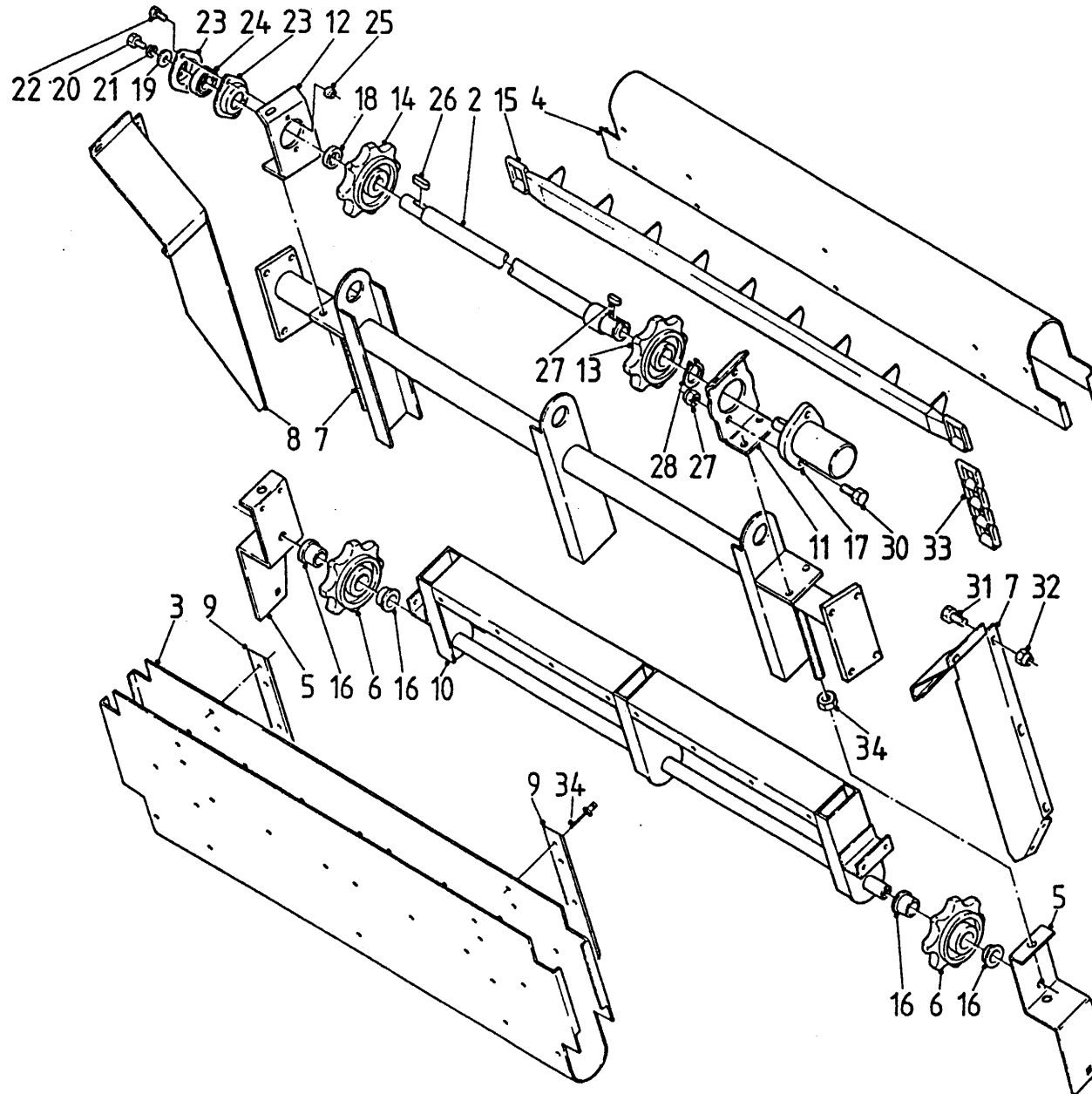


**Afbeelding 7**  
**Aanvoerband**  
**Bodenkette**



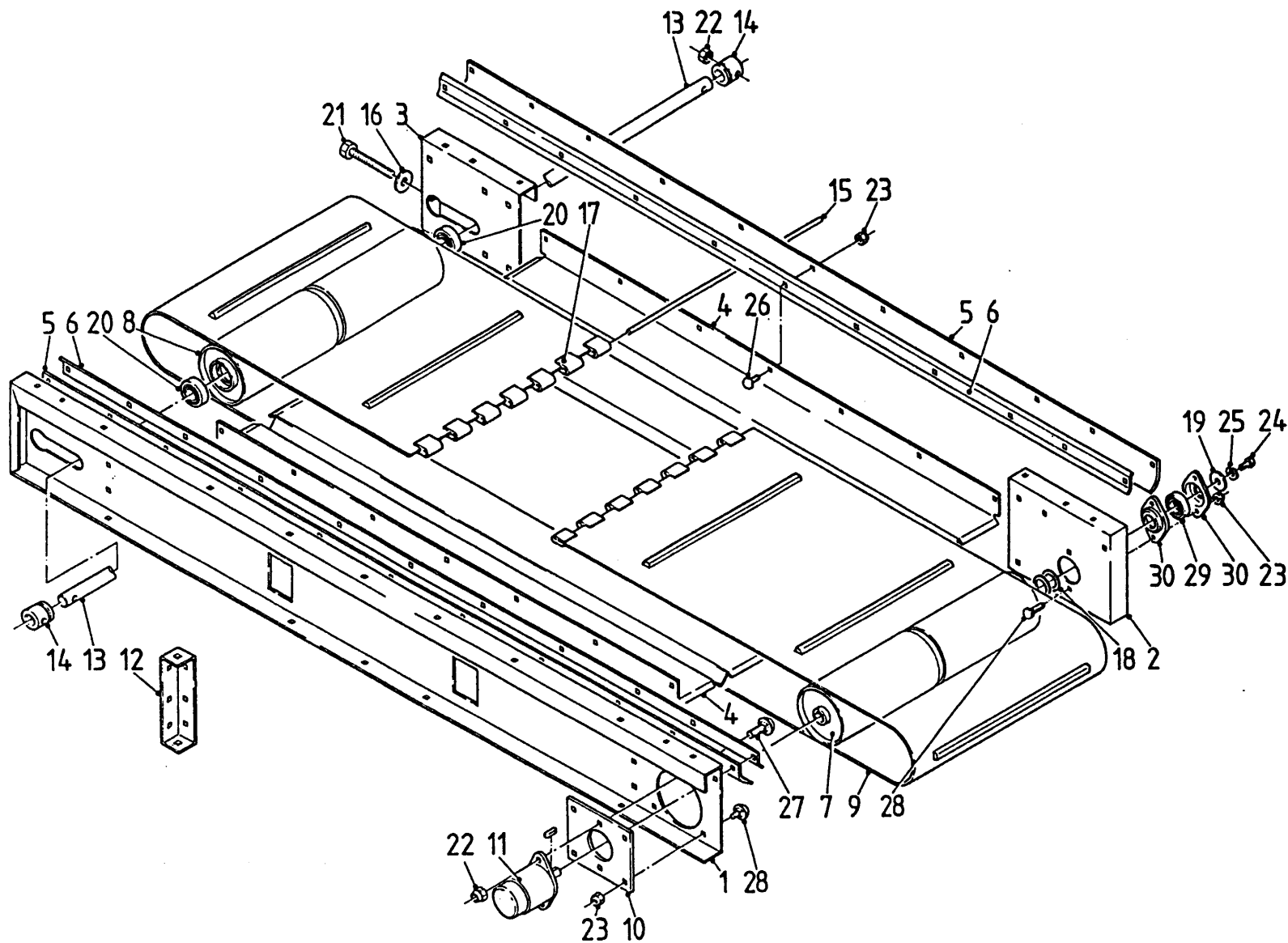
bestelnummer	ordernummer	num.à commander	Bestellnummer
1	22072	1	
2	30782	1	
3	30783	1	
4	10913	8	
5	UE235	2	
6	30785	2	
7	30784	2	
8	UE317	2	
9	51766	4	
10	50067	1	
11	50085	1	
12	UE291	1	
13	UE292	1	
14	70035	2	
15	81231	2	M12x30
16	81020	8	M10x20
17	86512	4	M12
18	86510	20	M10
19	85116	8	
20	86116	6	M16
21	88360	2	
22	81246	2	M12x45
23	81255	2	M12x55
24	85112	4	
25	84140	2	M10x16
26	39010	112	
27	87040	2	
28	88375	1	
29	83120	16	M10x20
30	85341	2	

**Afbeelding 8**  
Opvoerband  
Schrägförderkette



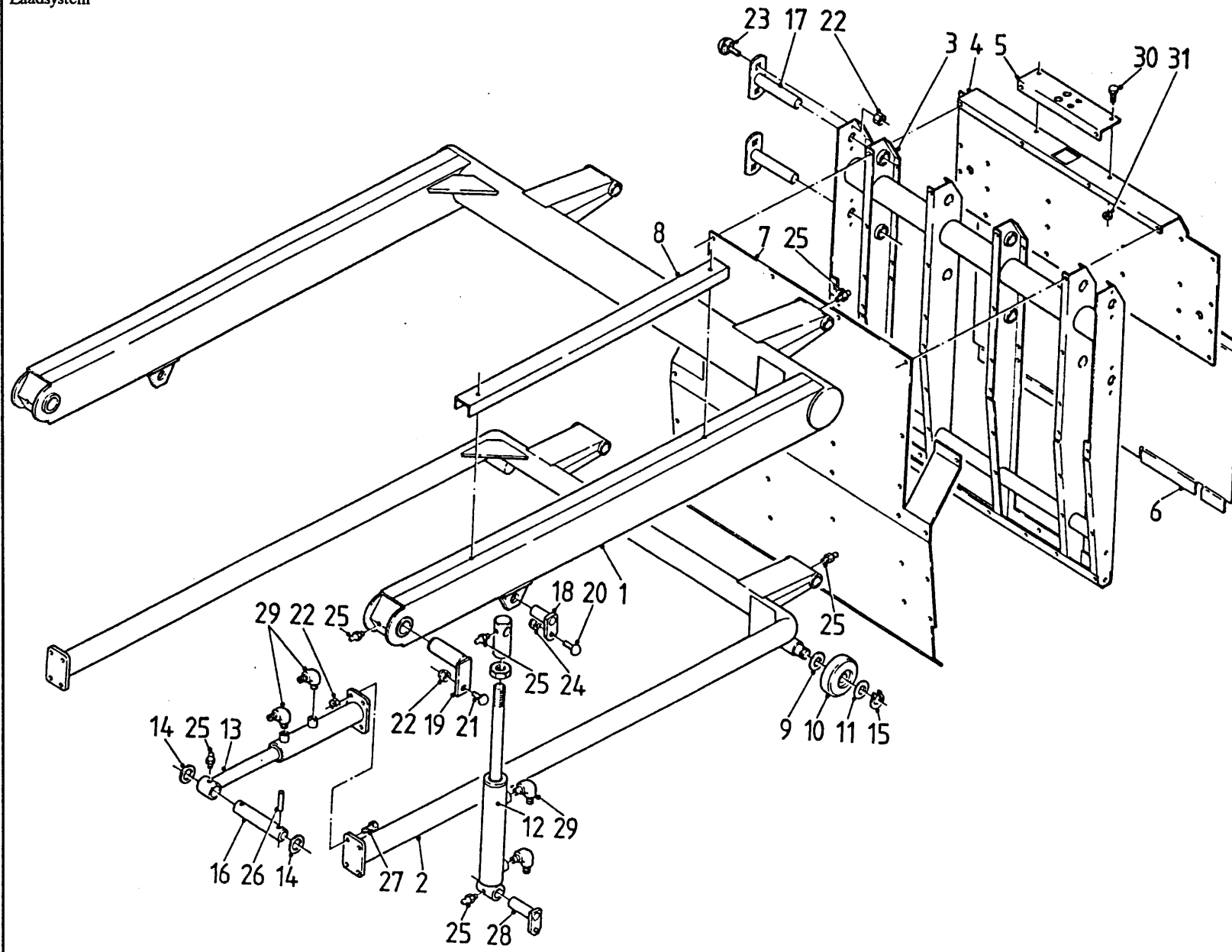
bestelnummer	ordernummer	num.à commander	Bestelnummer
1	10918	1	
2	10941	1	
3	40256	1	
4	40257	1	
5	22098	2	
6	30794	2	
7	40250	1	
8	40249	1	
9	UE316	2	
10	UE0383	1	
11	UE175	1	
12	UE176	1	
13	UE264	1	
14	UE265	1	
15	UE0294	5	
16	51767	4	
17	50078	1	
18	UE277	3	
19	HK116	1	
20	81020	1	M10x20
21	85010	1	
22	81025	2	M10x25
23	70050	1	
24	70054	1	
25	86510	2	M10
26	88340	1	
27	88335	1	
28	87042	1	
29	86512	2	
30	81235	2	M12x35
31	80816	12	M8x16
32	86508	12	M8
33	39010	40	
34	86116	2	M16

**Afbeelding 9**  
 Dwarsband  
 Seitentransportband



bestelnummer	ordernummer	num.à commander	Bestellnummer
1	22083	1	
2	22082	1	
3	22081	1	
4	ue371	2	
5	30793	2	
6	40248	2	
7	10938	1	
8	UE359	1	
9	UE360	1	
10	UE397	1	
11	50077	1	
12	UE013	2	
13	UE369	1	
14	UE399	2	
15	UE178	1	
16	TA195		
17	UE403	2	
18	DS59V	2	
19	HK116	1	
20	70051	2	
21	81218	2	M12x185
22	86512	4	M12
23	86510	22	M10
24	83020	1	M10x20
25	85010	1	
26	83120	16	M10x20
27	83241	2	M12x40
28	83125	6	M10x25
29	70050	1	
30	70054	1	

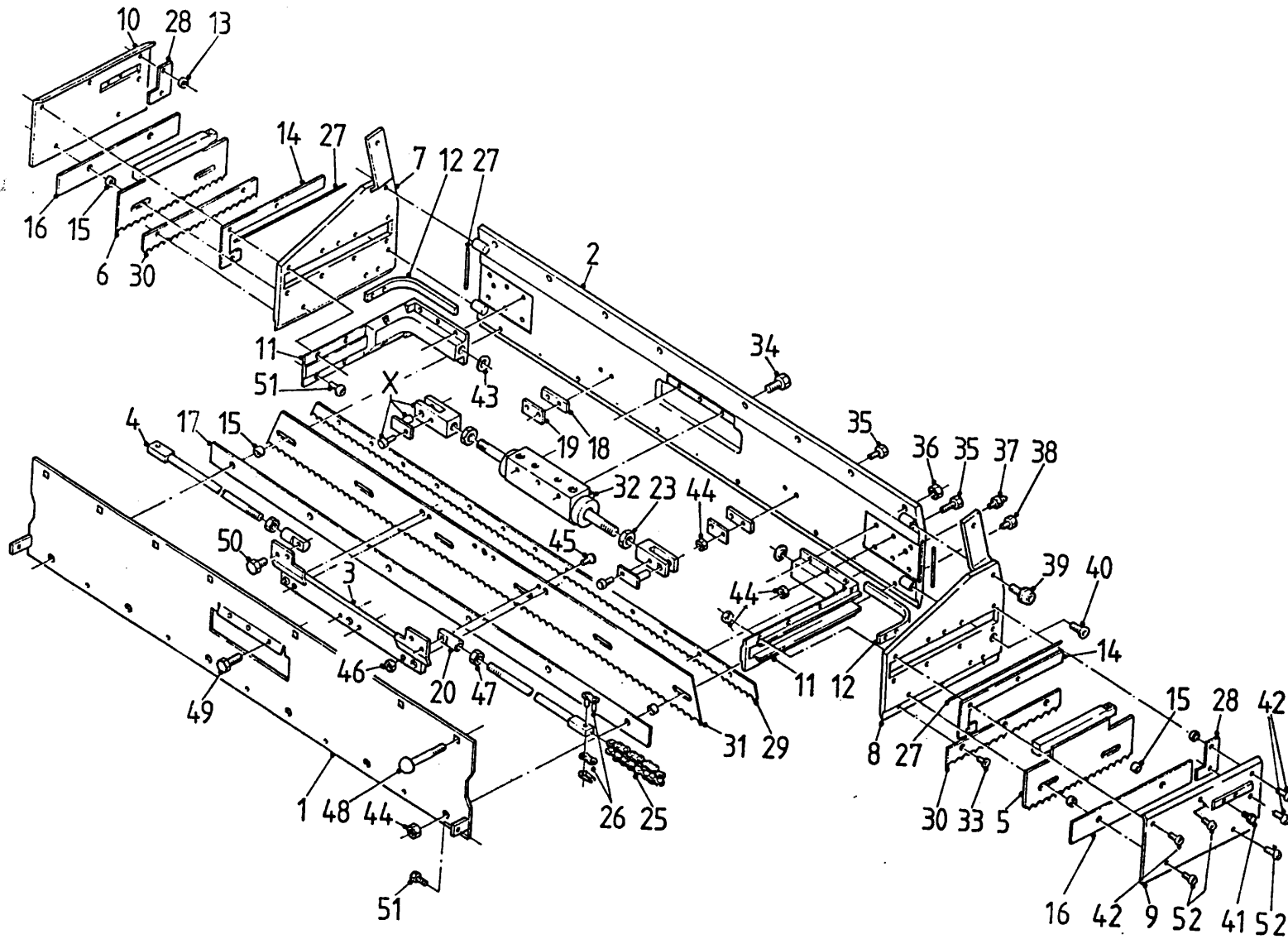
**Afbeelding 10**  
 Laadinrichting  
 Laadsysteem



bestelnummer	ordernummer	num.à commander	Bestellnummer
1	10911	1	
2	10912	1	
3	10916	1	
4	22104	1	
5	22103	1	
6	22102	1	
7	40255	1	
8	40253	1	
9	85340	2	
10	60017	2	
11	85341	2	
12A	UE00217	2	→00030
12B	50087	2	→ 00031
13	UE00523	1	
14	HS48V	2	
15	87041	2	
16	UE218	2	
17	UE0164	4	
18	UE080	2	
19	10910	2	
20	83125	2	M10x25
21	83231	2	M12x30
22	86512	18	M12
23	83236	8	M12x35
24	86510	2	M10
25	89503	12	
26	88170	4	
27	81241	8	M12x40
28	10915	2	
29	50103	4	

**Afbeelding 11**

Snijraam  
Schneidplatte



bestelnummer  
ordernummer  
num.à commander  
Bestellnummer

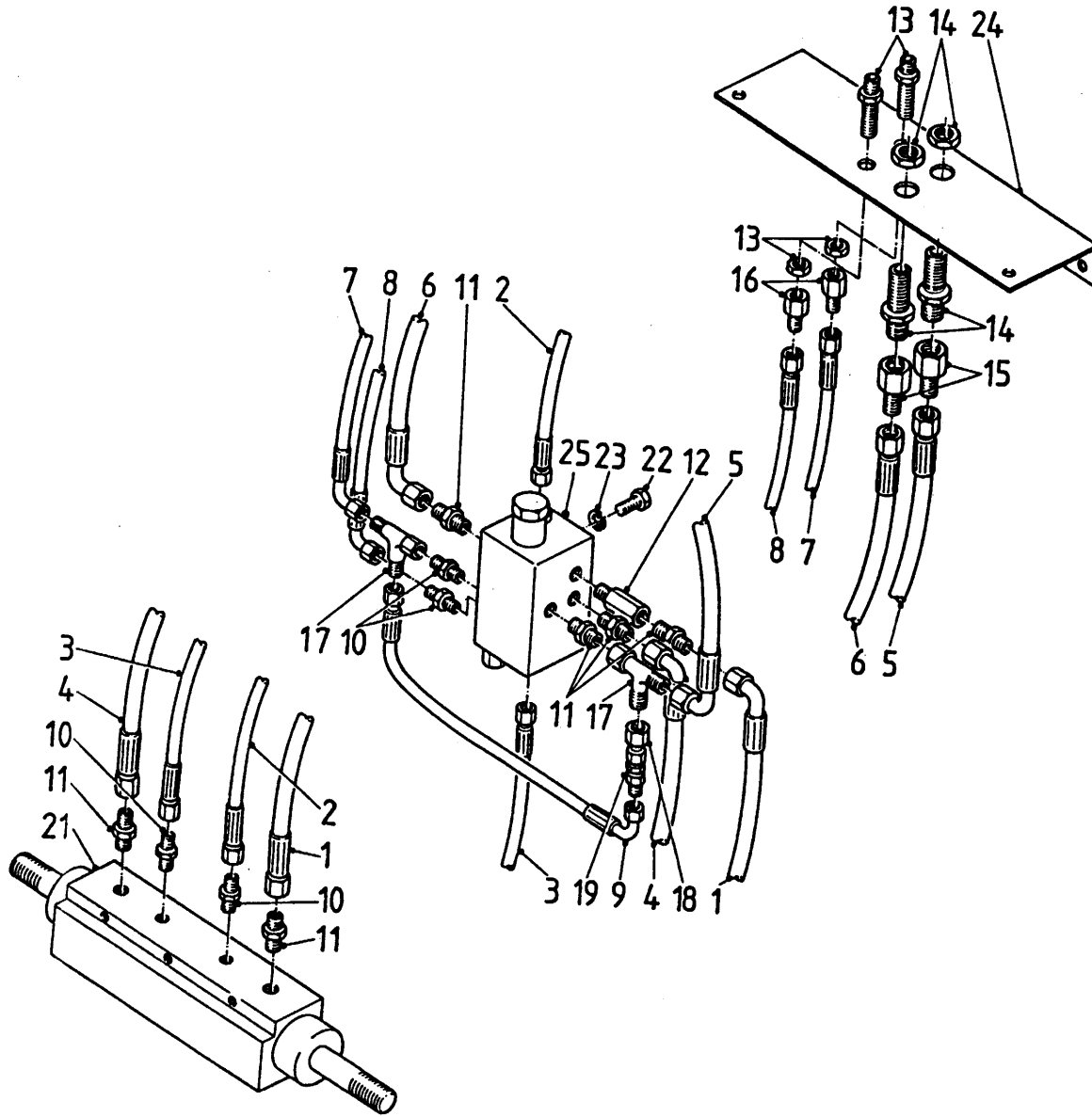
1	10986	1	47	86915	2 M12
2	10987	1	48	83280	8 M12x80
3	10994	1	49	84802	3 M10x30
4	10966	2	50	83920	2 M10x20
5	10991	1	51	84809	16 M8x12
6	10992	1	52	84806	6 M8x16
7	10988	1			
8	10989	1			
9	22263	1			
10	22280	1			
11	30851	2			
12	22289	2			
13	30879	4			
14	22283	2			
15	30871	10			
16	60160	2			
17	60161	1			
18	22249	2			
19	22284	2			
20	30849	2			
x	05024	2			
22	30225	2			
23	86115	2			
24	85218	19			
25	39070	2			
26	39071	4			
27	60163	2			
28	60162	2			
29	21915	1			
30	22233	2			
31	22231	1			
32A	50083	1	→00030		
32B	50087	1	→00031		
33	85218	19			
34	83920	3 M10x30			
35	84810	16 M8x30			
36	86512	8 M12			
37	89503	2			
38	84810	6 M8x30			
39	83921	2 M10x25			
40	84102	2 M10x30			
41	83610	4 M6x10			
42	84810	3 M8x30			
43	52026	2			
44	86508	24 M8			
45	84142	6 M6x20			
46	86506	4 M6			

Afbeelding 12

Krabarm  
Siokamm

bestelnummer  
ordernummer  
num.à commander  
Bestellnummer

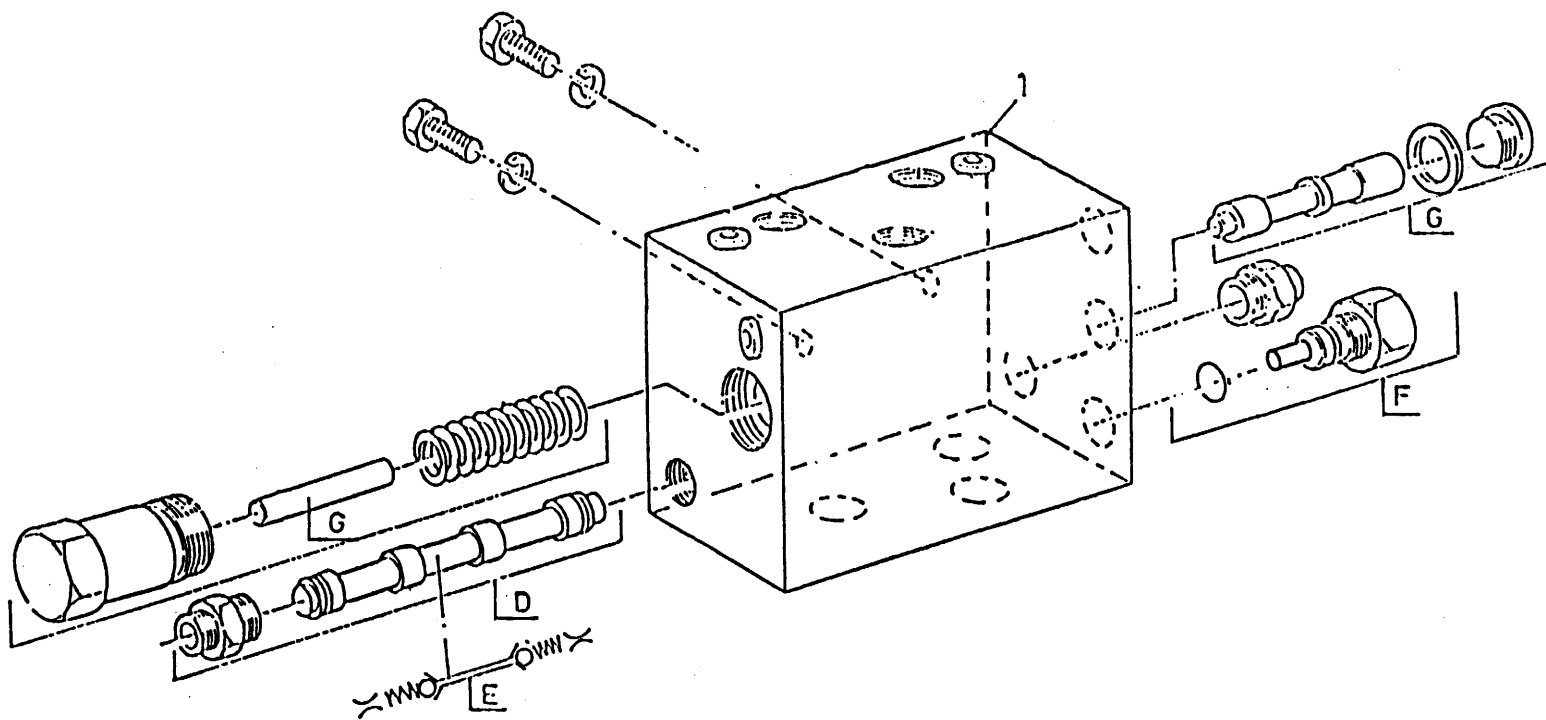
**Afbeelding 13**  
 Slangen snijbord  
 Schläuche Schneidsystem



bestelnummer  
 ordernummer  
 num.à commander  
 Bestellnummer

1	50668	1
2	50607	1
3	50742	1
4	50688	1
5	50692	1
6	50692	1
7	50719	1
8	50719	1
9	50630	1
10	50104	5
11	50102	4
12	50133	1
13	50502	2
14	50501	2
15	50161	2
16	50157	2
17	50303	2
18	50304	1
19	53018	1
20	53055	1
21	50083	1
22	80816	2
23	85008	2
24	22103	1
25	53055	1

Afbeelding 14  
 Stuurventielblok  
 Ventilblok

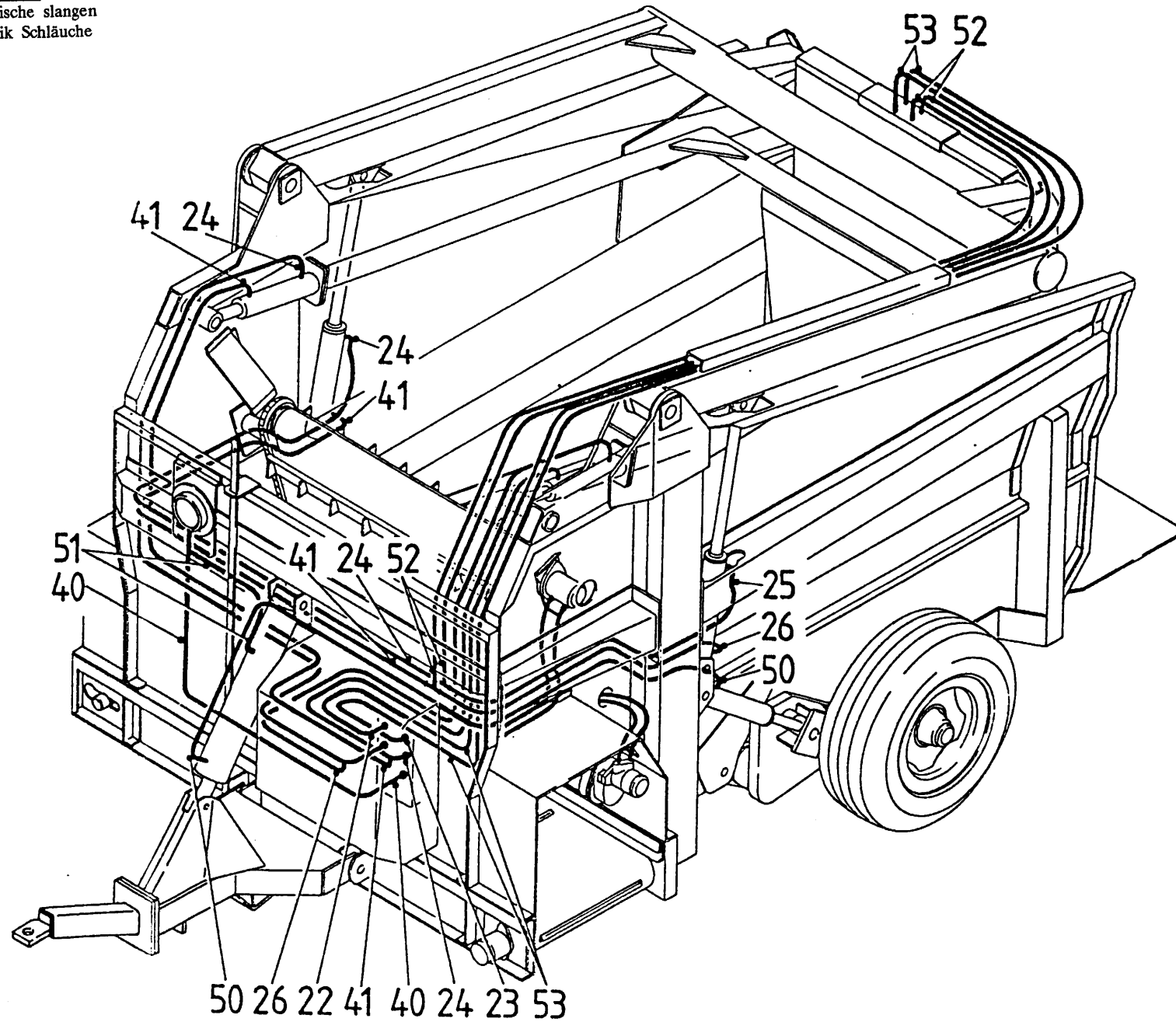


bestelnummer  
 ordernummer  
 num.à commander  
 Bestelnummer

1	53055	1
F	05145	1



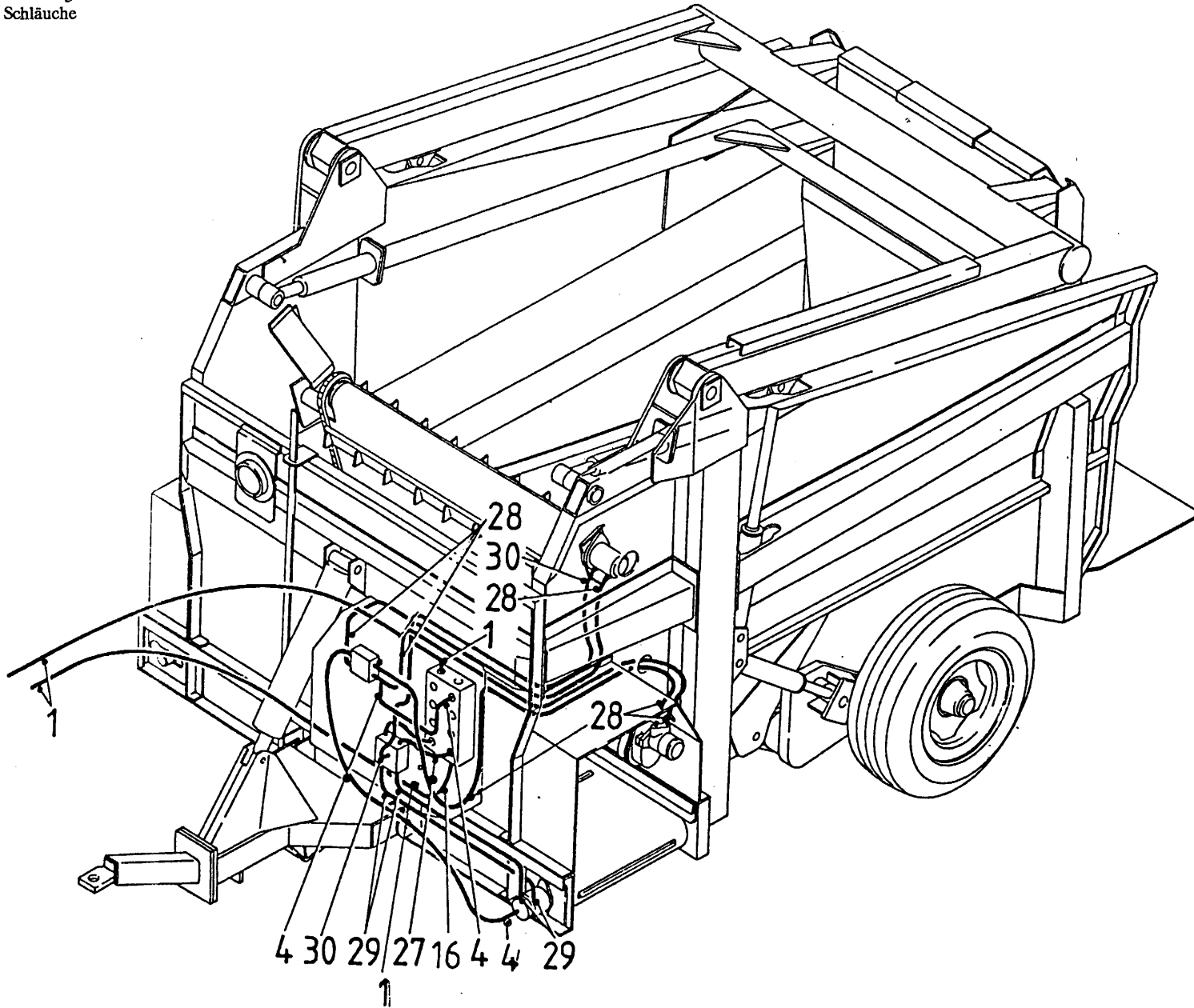
**Abbeiding 15**  
 Hydraulische slangen  
 Hydraulik Schläuche



bestelnummer  
 ordernummer  
 num.à commander  
 Bestellnummer

22	50734	1
23	50735	1
24	50713	2
25	50716	1
26	50715	1
40	50637	1
41	50714	2
50	50685	1
51	50621	1
52	50518	2
53	50517	2

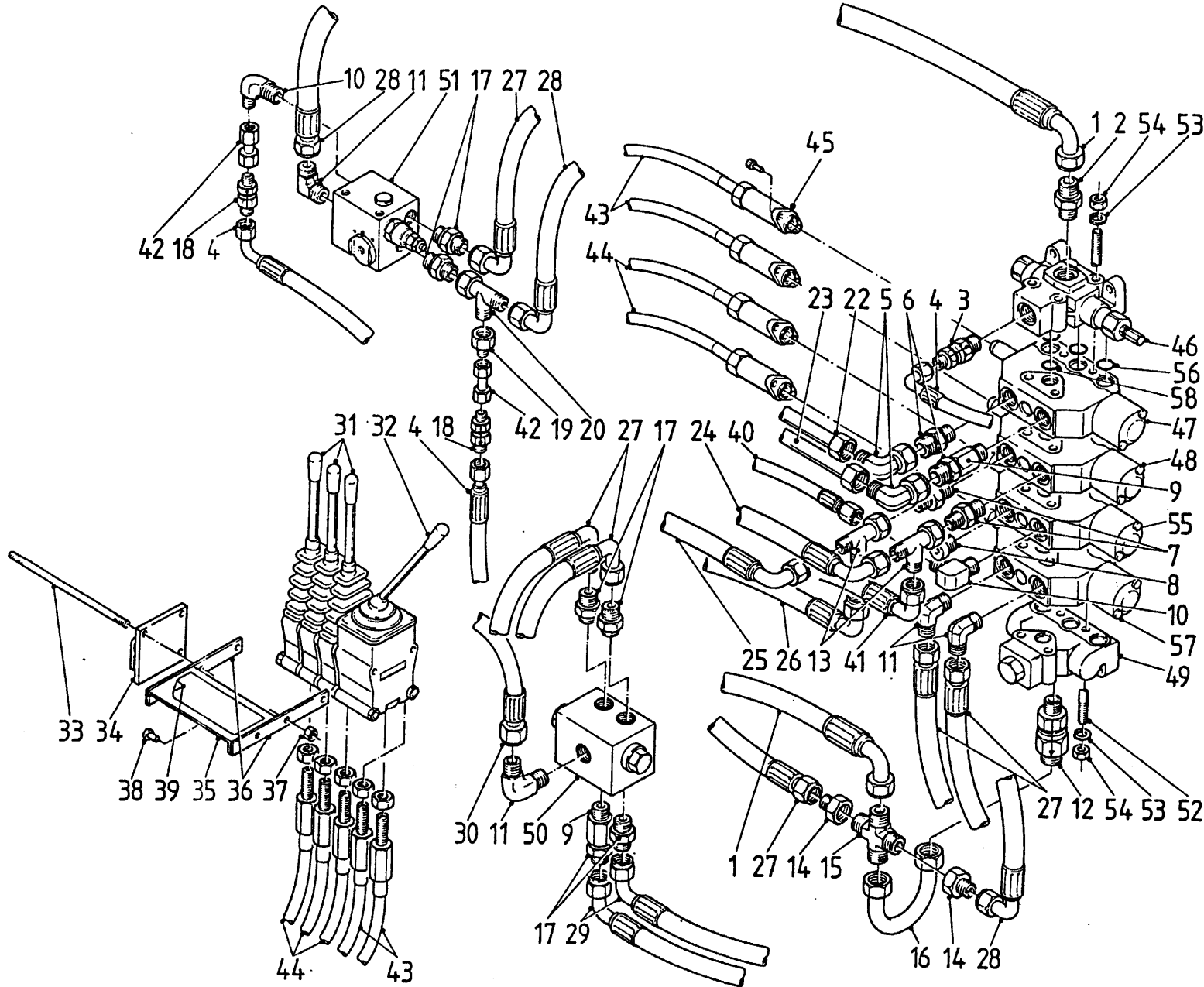
**Afbeelding 16**  
 Hydraulische slangen  
 Hydraulik Schläuche



bestelnummer  
 ordernummer  
 num.à commander  
 Bestellnummer

1	50738	2
4	50699	2
16	50735	1
27	50688	1
28	50601	3
29	50605	2
30	50604	1

**Afbeelding 17**  
 Mechanische bediening  
 Mechanische Fernbediening

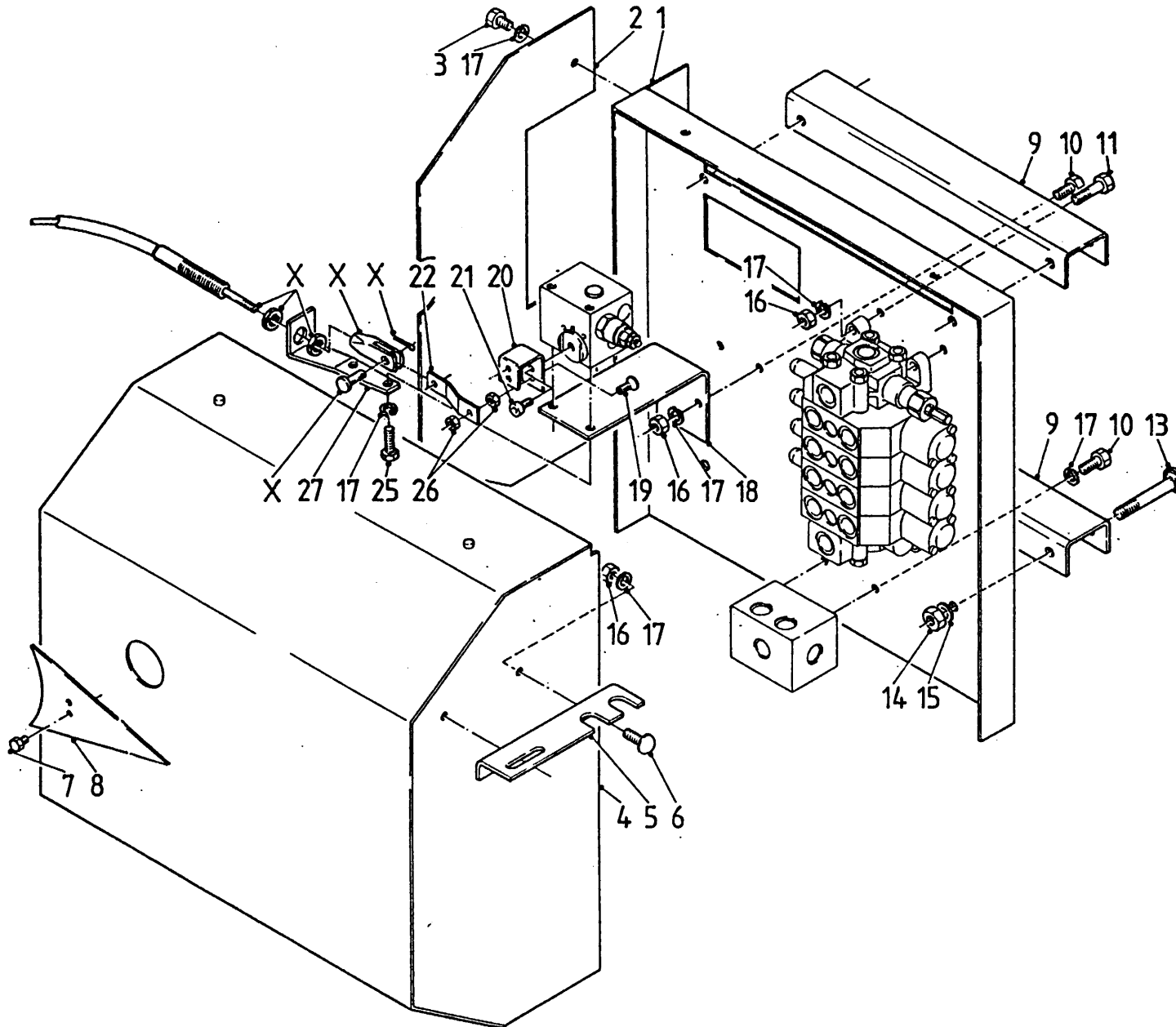


bestelnummer		ordernummer		num.à commander		Bestellnummer	
1	50738	2	48	53072	1		
2	50139	1	49	53075	1		
3	50137	1	50	53064	1		
4	50699	2	51	53063	1		
5	50418	2	52	84026	4		
6	50138	2	53	85008	4		
7	50141	2	54	86108	4		
8	53304	1	55	53073	1		
9	50133	1-1	56	78055	3		
10	50118	1	57	53074	1		
11	50101	2-1-1	58	78056	1		
12	53065	1					
13	50309	2					
14	50161	1-1					
15	50451	1					
16	50735	1					
17	50102	2-2-2					
18	53017	1-1					
19	50304	1					
20	50303	1					
21	50114	1					
22	50734	1					
23	50735	1					
24	50713	1					
25	50716	1					
26	50715	1					
27	50688	1					
28	50601	3					
29	50605	2					
30	50604	1					
31	53039	3					
32	05122	1					
33	30847	3					
34	10283	1					
35	22245	1					
36	22244	2					
37	86208	8					
38	80816	2					
39	91168	1					
40	50637	1					
41	50714	1					
42	50739	2					
43	79053	2					
44	79054	3					
45	05114	4					
46	53070	1					
47	53071	1					

**Afbeelding 18**  
Elektrische bediening  
Elektrische Fernbedienung

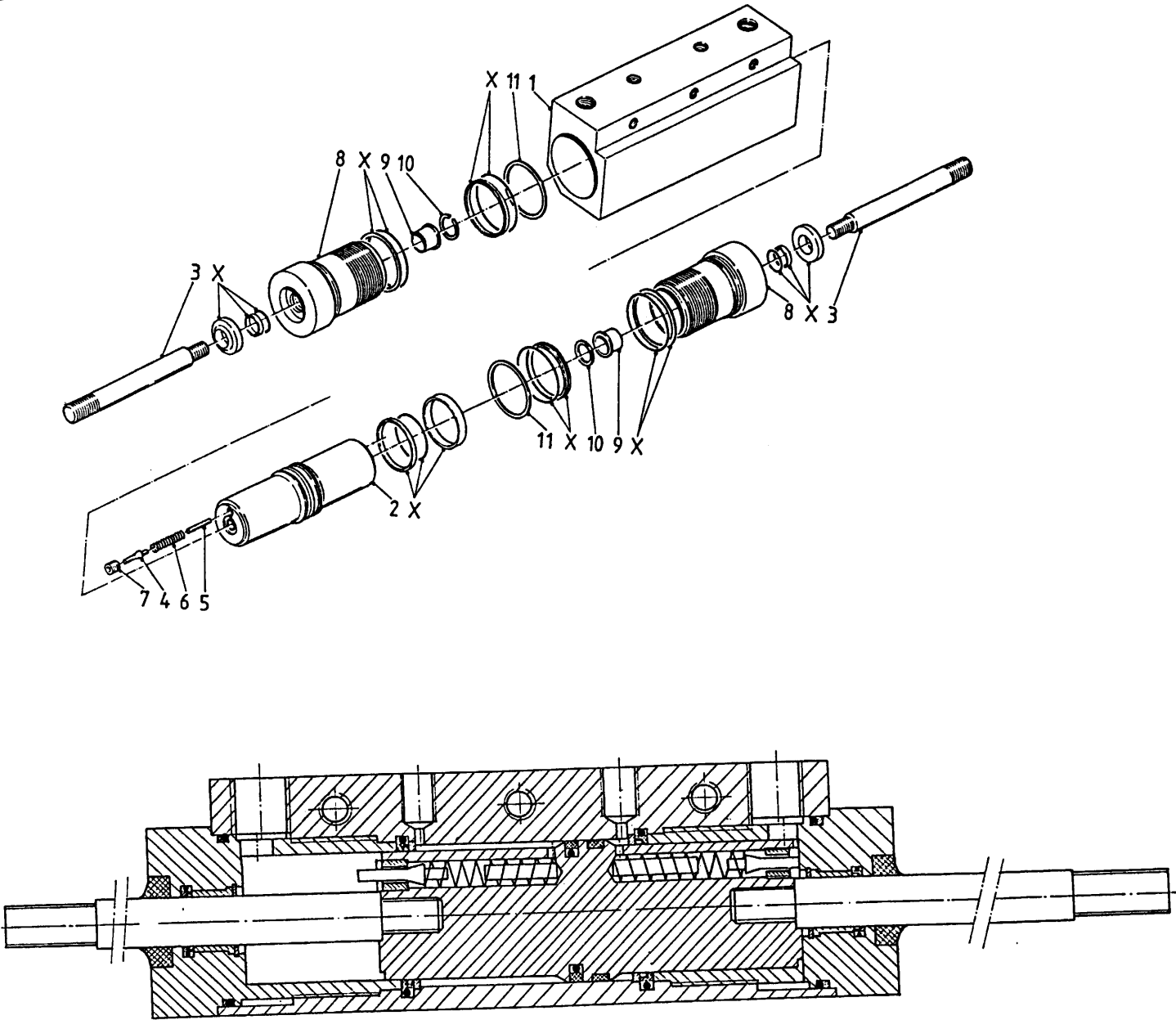
bestelnummer  
ordernummer  
num.à commander  
Bestellnummer

**Afbeelding 19**  
 Omkasting bediening  
 Schutzkappe Fernbedienung



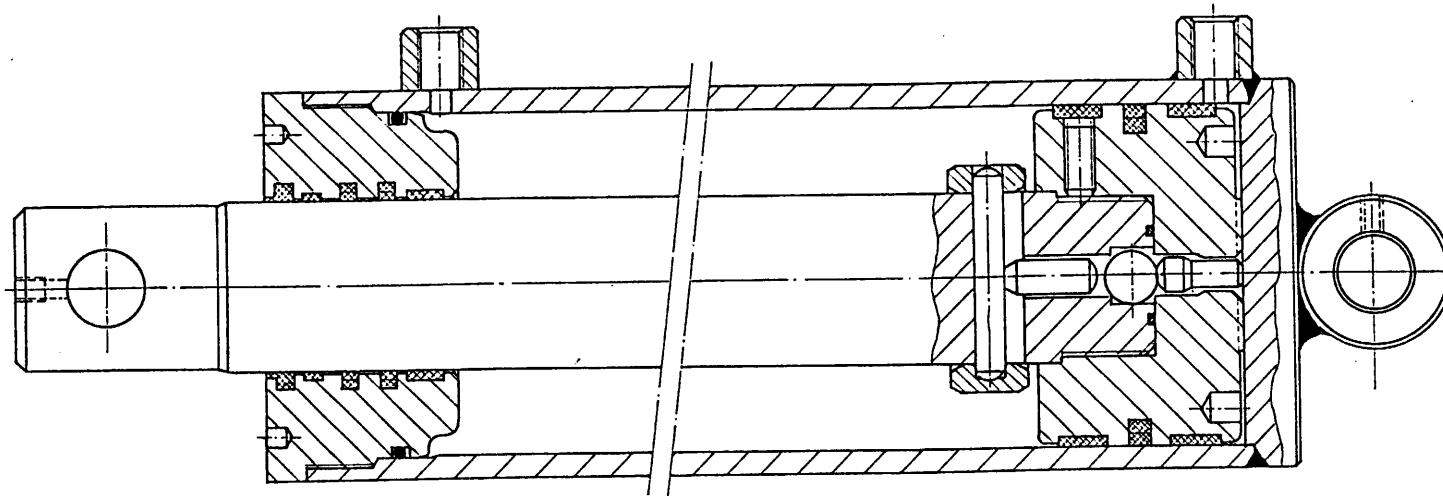
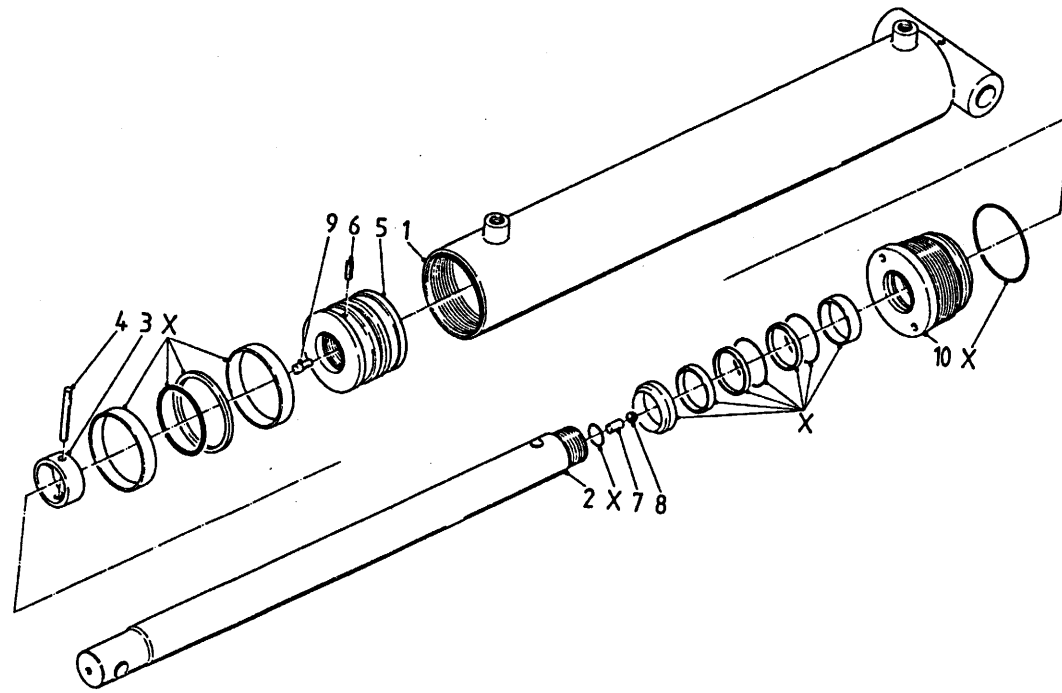
Bestelnummer	ordernummer	num.à commander	Bestelnummer
1	22239	1	
2	22241	1	
3	80810	2	M8x10
4	10964	1	
5	22250	1	
6	83816	2	
7	80610	2	M6x10
8	22253	1	
9	22254	2	
10	80816	4	M8x16
11	80840	4	M8x40
13	83190	4	M10x90
14	86210	4	M10
15	85010	4	
16	86208	8	M8
17	85008	12	
18	22240	1	
19	84144	1	M6x30
20	22252	1	
21	84420	1	M8x16
22	22243	1	
25	80821	2	M8x20
27	22242	1	
x	79054	1	

**Afbeelding 20**  
 Mescilinder  
 Messerzylinder



bestelnummer		
ordernummer		
num.à commander		
Bestellnummer		
	50083	→ 00030
1	30869	1
2	30866	1
3	30867	2
4	30865	2
5	88344	2
6	65051	2
7	30870	2
8	30863	2
9	30864	2
10	83711	2
11	30868	2
x	05140	1
	50086	→ 00031
1	30922	1
2	30920	1
3	30867	2
4	30865	2
5	88344	2
6	65051	2
7	30870	2
8	30919	2
9	30864	2
10	83711	2
11	30921	2
x	05148	1

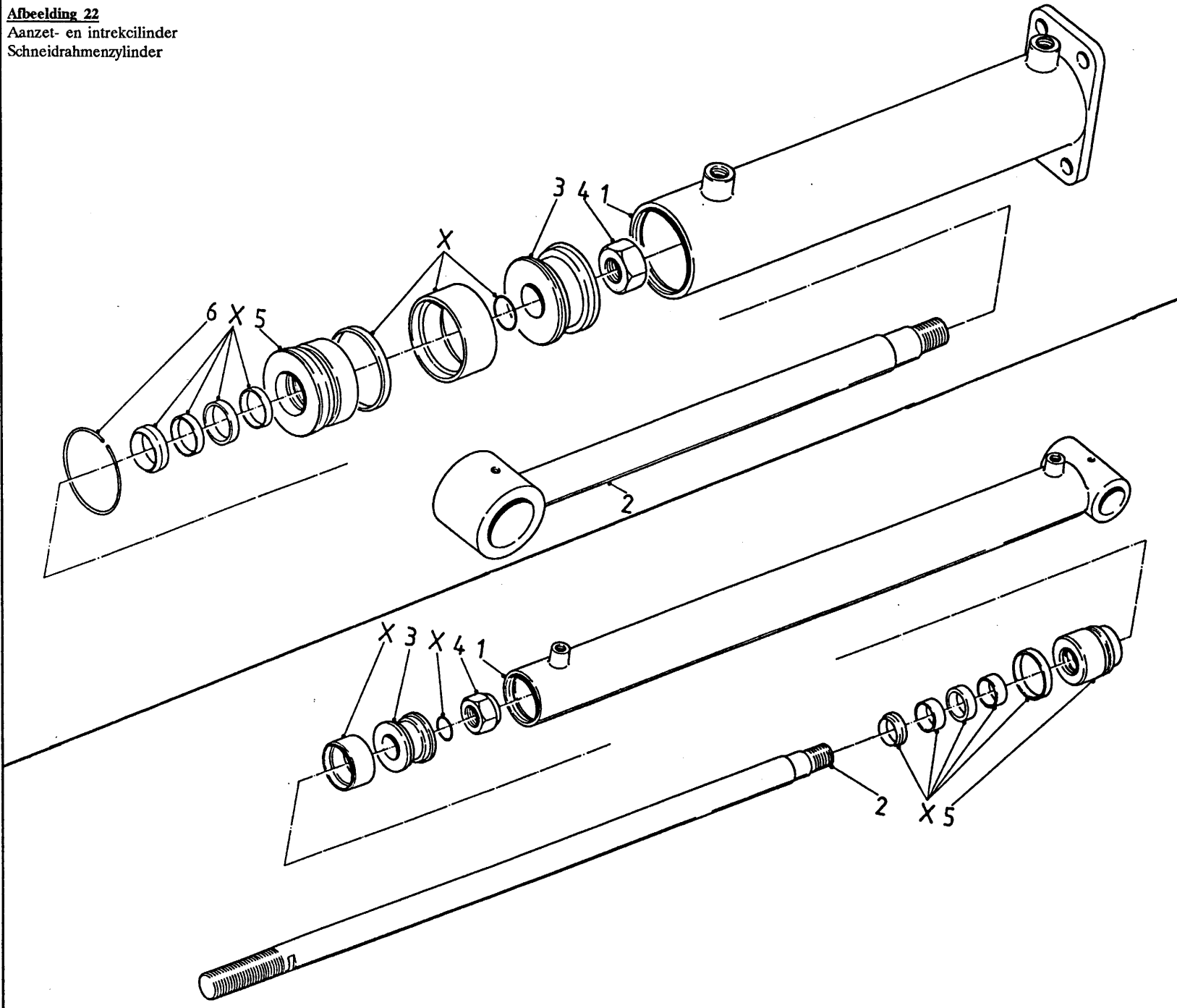
**Afbeelding 21**  
 Disselcilinder  
 Deichselcilinder



bestelnummer  
 ordernummer  
 num.à commander  
 Bestellnummer

1	11045	1
2	30905	1
3	30906	1
4	88355	1
5	30907	1
6	84146	1
7	88324	1
8	70055	1
9	30909	1
10	30908	1
x	05143	1

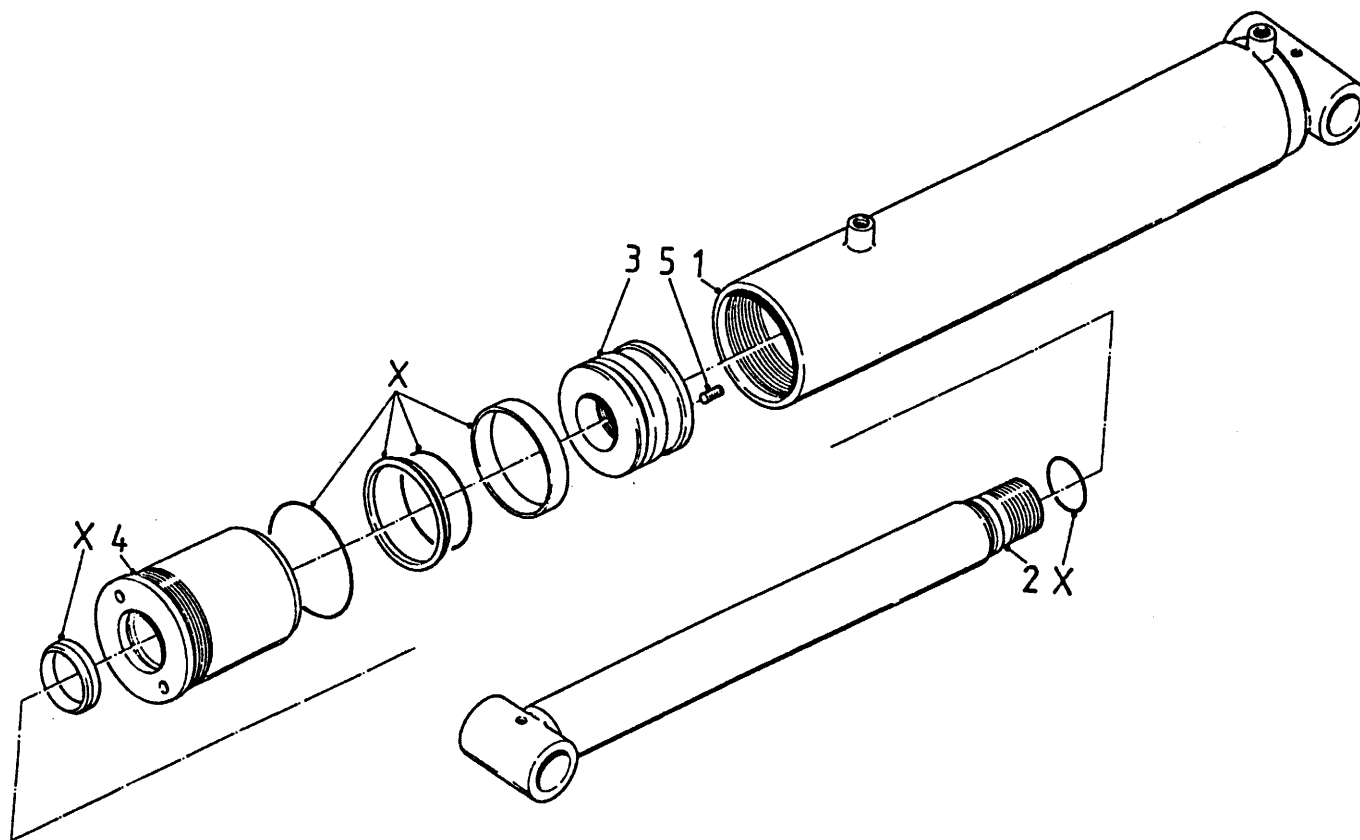
**Afbeelding 22**  
 Aanzet- en intrekcilinder  
 Schneidrahmenzyliner



bestelnummer	ordernummer	num.à commander	Bestellnummer
UE00523			
1	11041	1	
2	11042	1	
3	30902	1	
4	86127	1	
5	30903	1	
6	85802	1	
x	05141	1	
UE00217			→ 00030
1	11046	1	
2	30910	1	
3	30911	1	
4	86227	1	
5	30912	1	
x	05144	1	
50087			→ 00031
1	11065	1	
2	30910	1	
3	30927	1	
4	86227	1	
5	30926	1	
x	05149	1	



Afbeelding 23  
 Wielarmcilinder  
 Radarmzylinder



bestelnummer  
 ordernummer  
 num.à commander  
 Bestellnummer

1	11042	1
2	11043	1
3	30900	1
4	30904	1
5	84610	1
x	05142	1

**Afbeelding 24**  
Elektronisch weegstelsel  
Elektronische Waage

bestelnummer  
ordernummer  
num.à commander  
Bestelnummer

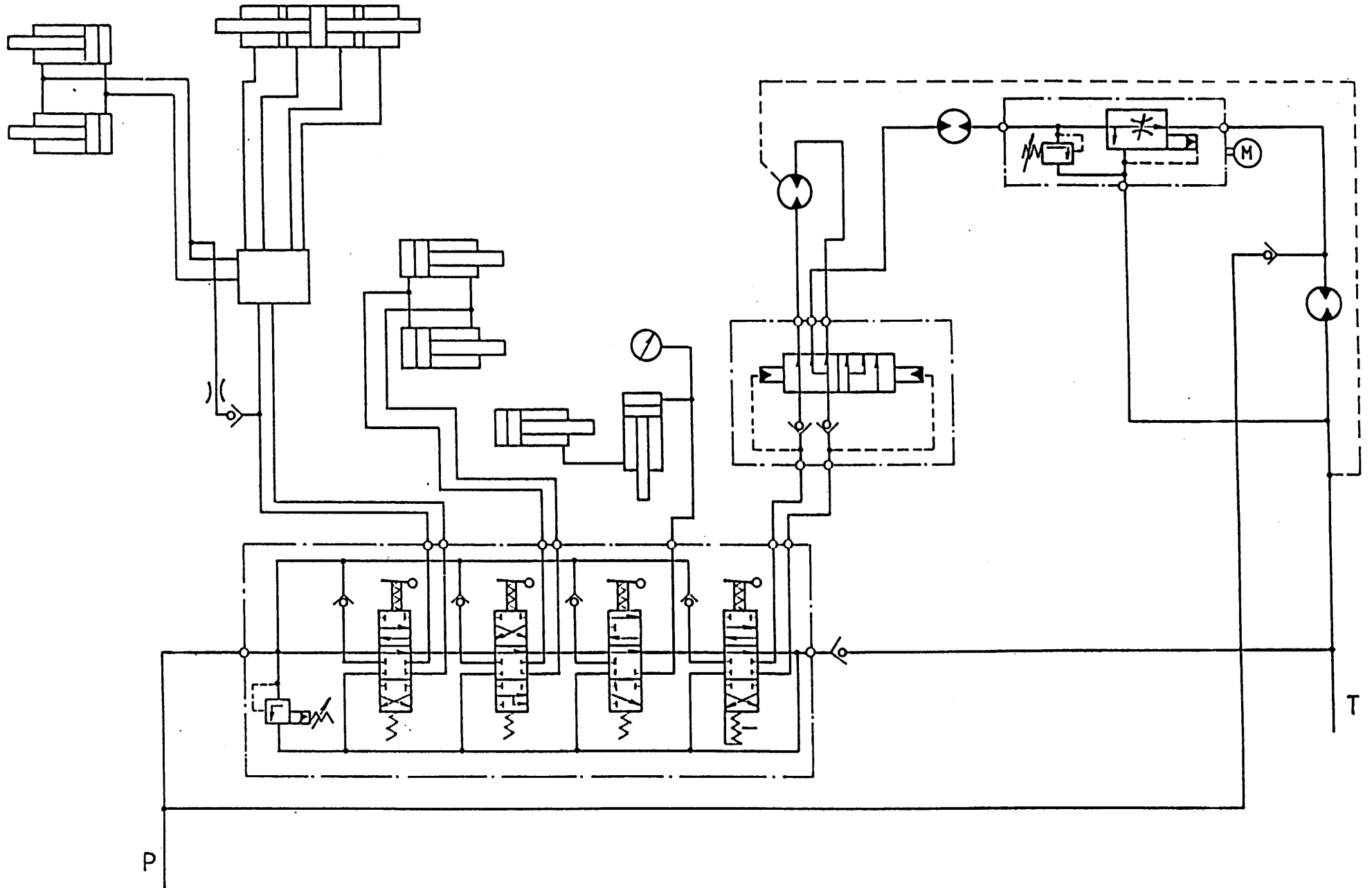
Afbeelding 25  
Pompunit  
Pumpeinheit

bestelnummer  
ordernummer  
num.à commander  
Bestellnummer

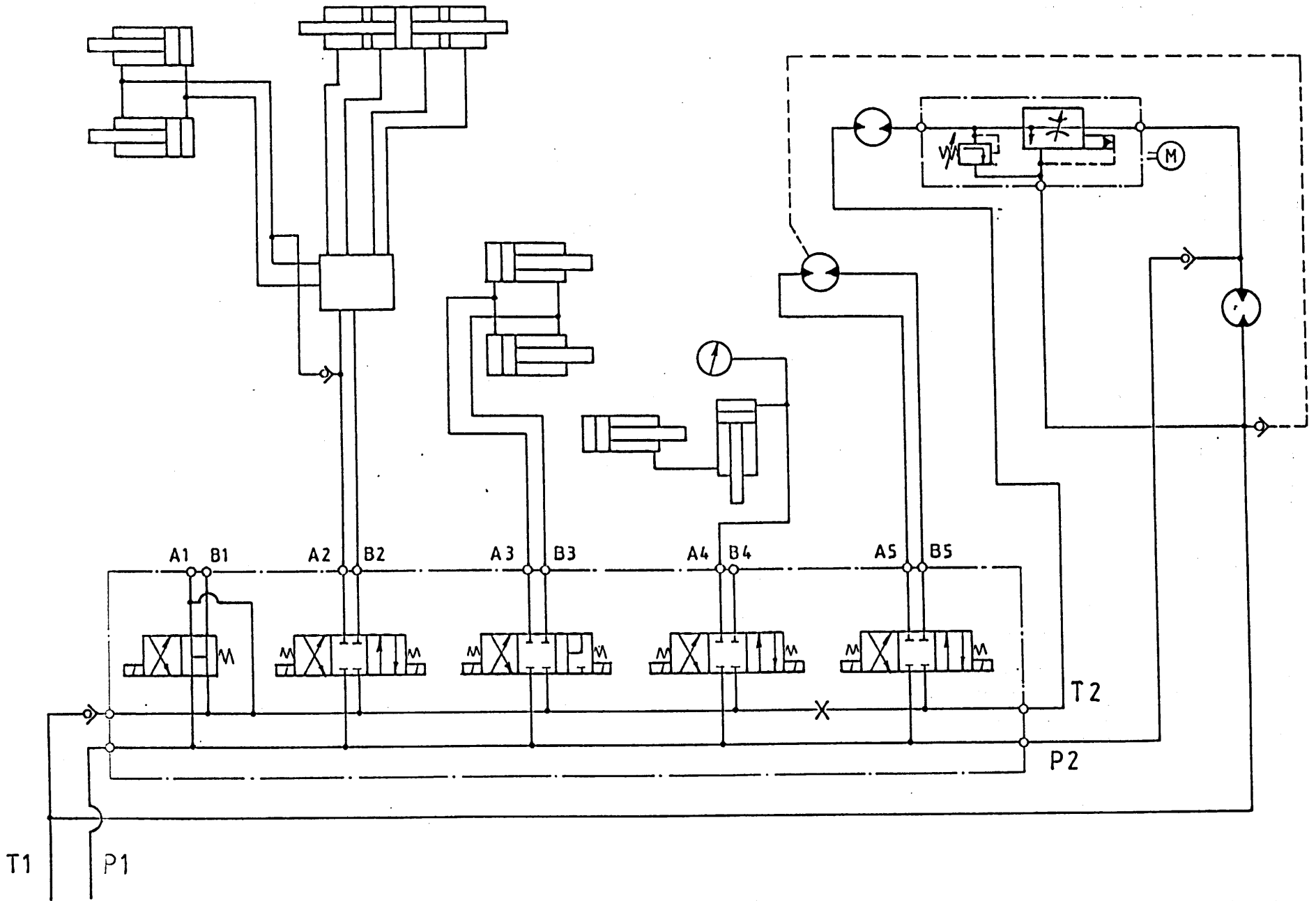
Afbeelding 26

Schakelschema mechanische bediening snijstysteem

Schaltplan mechanische Fernbedienung Schneidsystem

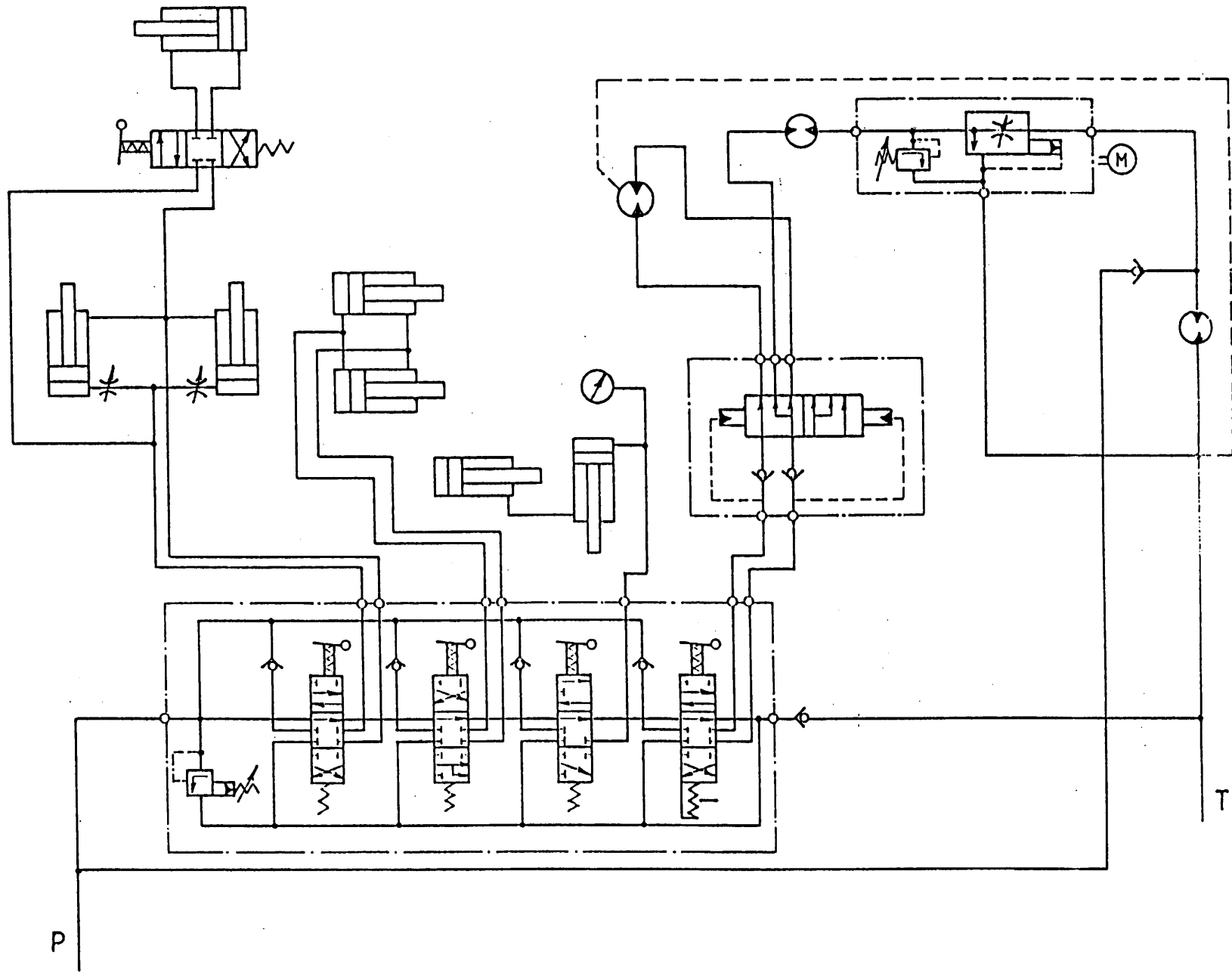


**Abbeelding 27**  
 Schakelschema elektrische bediening snijstelsysteem  
 Schaltplan elektrische Fernbedienung Schneidsystem

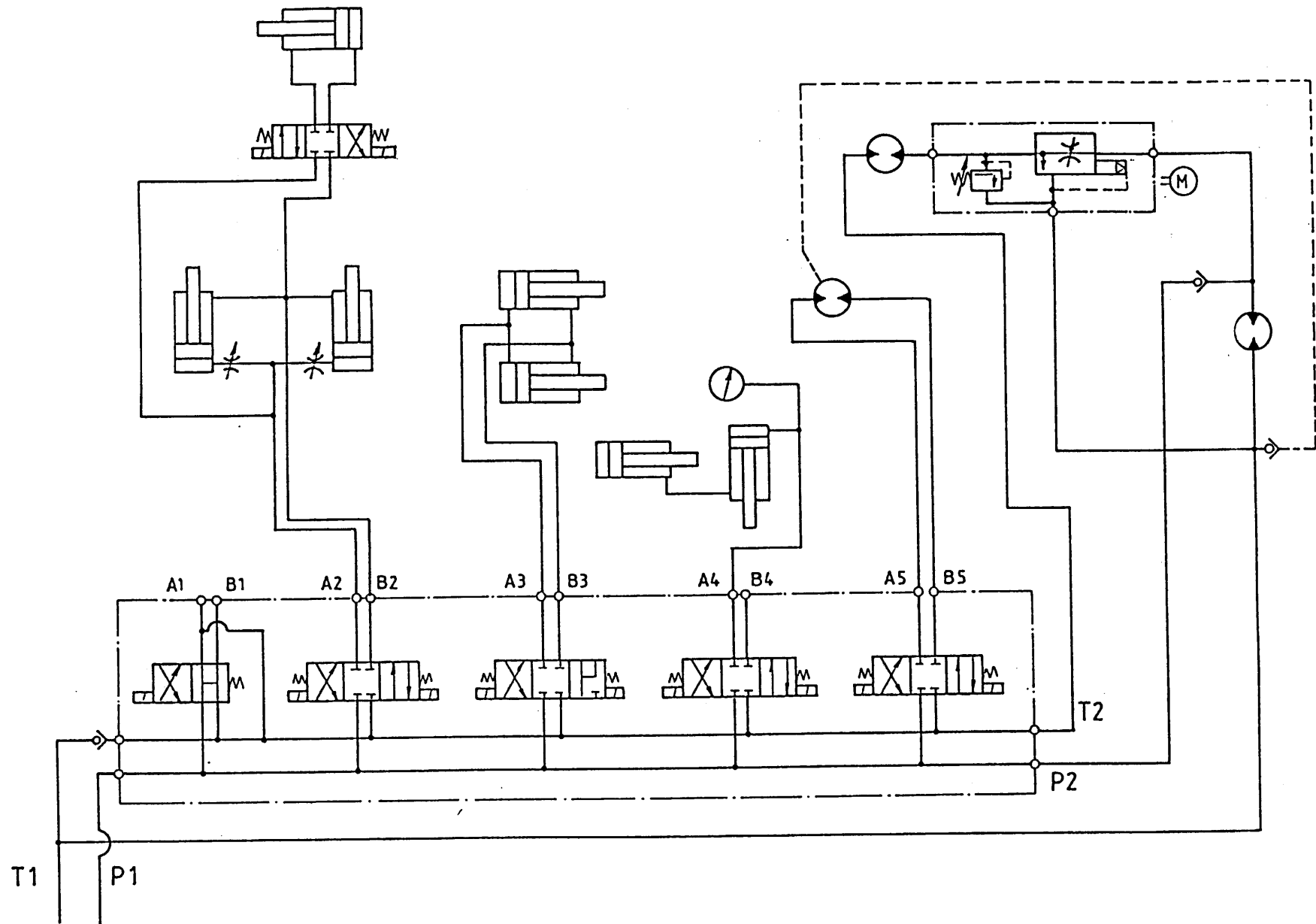


**Afbeelding 28**

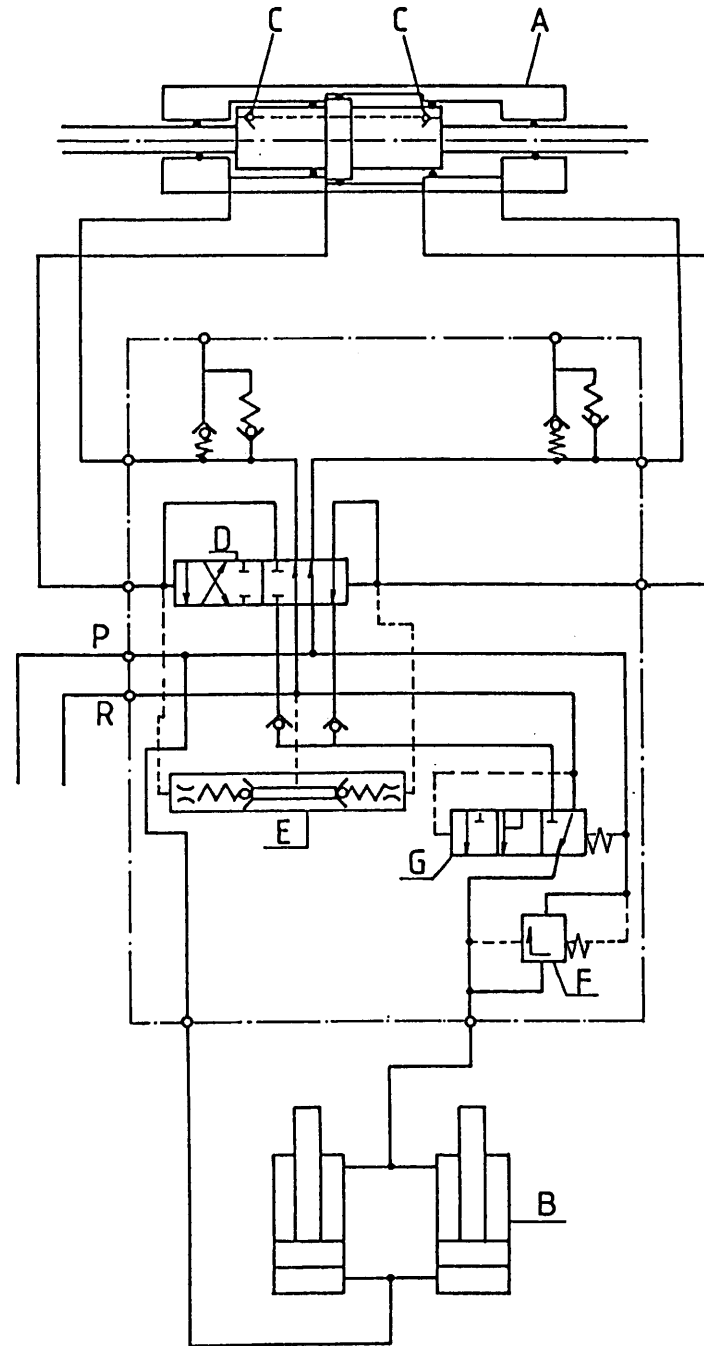
Schakelschema mechanische bediening krabbord  
Schaltplan mechanische Fernbedienung Silokamm



**Abbeelding 29**  
Schakelschema elektrische bediening krabbord  
Schaltplan elektrische Fernbedienung Silokamm



Afbeelding 30  
Schakelschema snijsysteem  
Schaltplan Schneidsystem







TRIO LIET MULLOS BV  
Smitsbreeweg 2, 7581 HE Losser, Holland  
Postbus 202, 7580 AE Losser / Postfach 202, 7580 AE Losser, Holland  
Telefoon 05423-81700 / Tel. (+) 31 - 5423-81700  
Telefax 05423-87605 / Telefax (+) 31 - 5423-87605