

# Trioliet Mullos

Mengdoseerwagen

Futter-, Misch- und Verteilwagen

Feeder Mixer

## Gigant 500



Onderdelen- en Werkplaatshandboek  
Ersatzteilliste und Werkstatthandbuch  
Spareparts list and workshop manual

Bestelnummer/Bestellnummer 92193/1

Geldig vanaf productieserie nr./Gültig ab/Valid from Prod. Series No.: 01

## INHOUDSOPGAVE

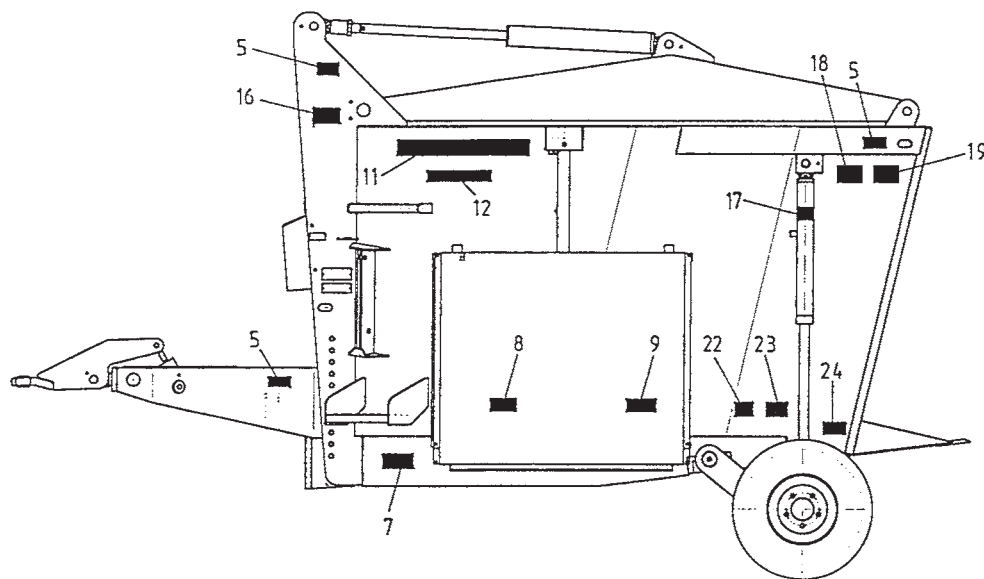
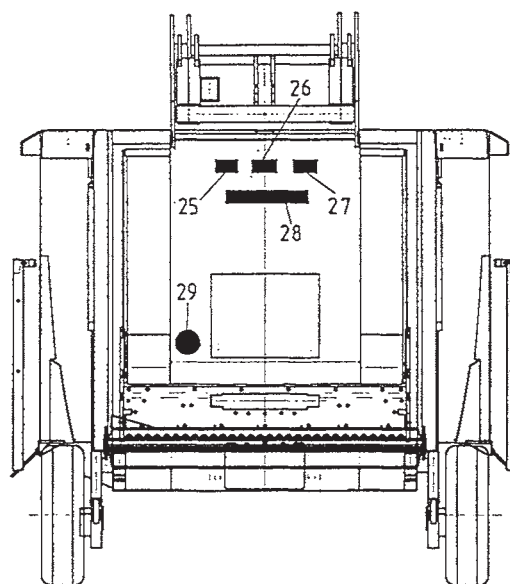
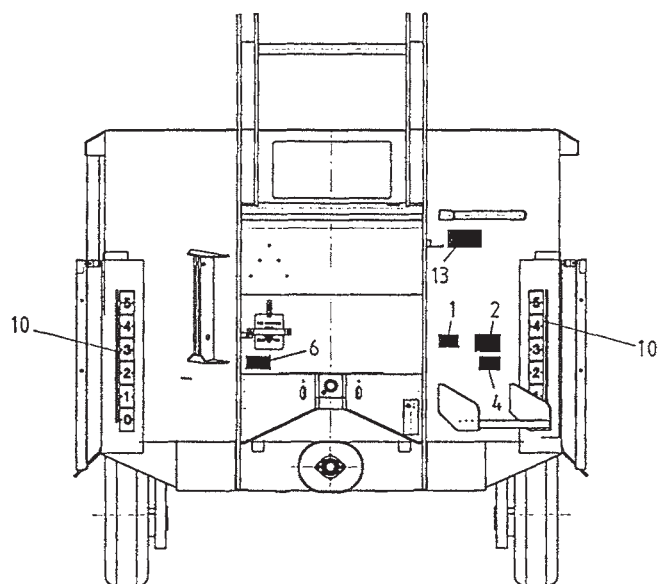
## INHALTSVERZEICHNIS

## CONTENTS

Afb.		Abb.		Pic.	
1.	Stickers	1.	Aufkleber	1.	Decals
2.	Frame	2.	Rahmen	2.	Frame
3.	Dissel	3.	Deichsel	3.	Drawbar
4A.	Mengvijzel en aandrijving	4A.	Schnecke und Antrieb	4A.	Auger and drive system
4B.	Afschakelkoppeling	4B.	Abschaltkupplung	4B.	Break-shift coupling
5.	Wielstel	5.	Radachse	5.	Wheelaxle
6.	Laadarm en snijbord	6.	Ladeschwinge und Schneidplatte	6.	Loading arm and cutting board
7.	Messysteem	7.	Schneidvorrichtung	7.	Cutting system
8.	Stuurblok uitwendig	8.	Umschaltventil und Schlauche	8.	Control block and hoses
9.	Stuurblok inwendig	9.	Steuerblock Innenseite	9.	Control block
10.	Achter- en zijmescilinder	10.	Heck- und Seitenmesserzylinder	10.	Cutting cylinders
11.	Intrekcilinder	11.	Ladezylinder	11.	Loading cylinder
12.	Aanzetcilinder	12.	Vorschubzylinder Schneiden	12.	Main cylinder cutting
13.	Doseerlep- en wielarmcilinder	13.	Dosierklappe und Radarmzylinder	13.	Unload. door and wheelaxle cylinder
14.	Handventielen	14.	Handventilen	14.	Manual control
15.	Mechanische bediening	15.	Mechanische Fernbediening	15.	Mechanical remote control
16.	Elektrische bediening	16.	Elektrischer Fernbediening	16.	Electrical remote control
17.	Hydraulische weeginstallatie	17.	Hydraulischer Wiegeeinrichtung	17.	Hydraulic weighing system
18.	Weegcilinder	18.	Wiegecilinder	18.	Weighing cylinder
19.	Elektronische weeginstallatie	19.	Elektronischer Wiegeeinrichtung	19.	Electronic weighing system
20.	Slangenschema handbediening	20.	Schaltplan Handbediening	20.	Hose-scheme manual control
21.	Slangenschema mech. bediening	21.	Schaltplan Mech. Fernbediening	21.	Hose-scheme mech. remote control
22.	Slangenschema elektr. bediening	22.	Schaltplan Elektr. Fernbediening	22.	Hose-scheme electr. remote control
23.	Aansluitschema bedieningskast	23.	Schaltplan Bedienungskasten	23.	Scheme electrical controlbox
24.	Aftakas	24.	Gelenkwelle	24.	PTO shaft

**92193/1**

Afbeelding 1 : Stickers  
 Abbildung 1 : Aufkleber  
 Picture 1 : Decals

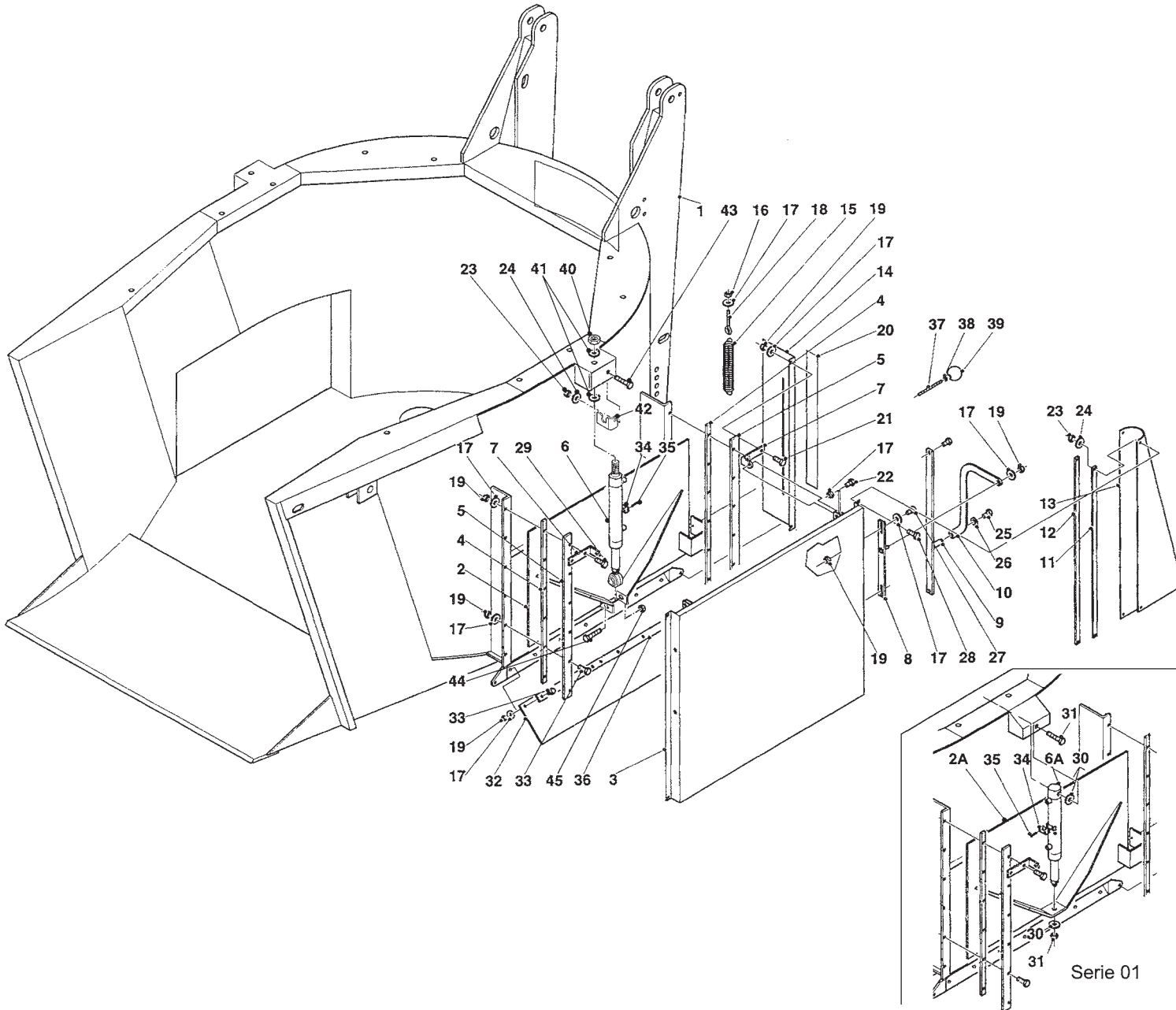


Bestelnummer  
 Bestellnummer  
 Ordernummer  
 Num. a commander

1	91159	1
2	91433	1
4	91215	1
5	91183	6
6	91118	1
7	91333	2
8	91211	2
9	91327	2
10	91143	2
11A	91249	2 L = 980 serie 01
11B	91399	2 L = 730 serie  → 02
12A	91357	2 serie 01
12B	91406	2 serie  → 02
13	91431	1
16	91151	2
17	91182	1
18	91435	2
19	91434	2
22	91228	2
23	91323	2
24	91325	2 4.0 bar
25	91163	1
26	91189	1
27	91153	1
28A	91247	1 L = 460 serie 01
28B	91407	1 L = 480 serie  → 02
29	91331	1 8 kmh

**92193/1**

Afbeelding 2 : Frame  
 Abbildung 2 : Rahmen  
 Picture 2 : Frame

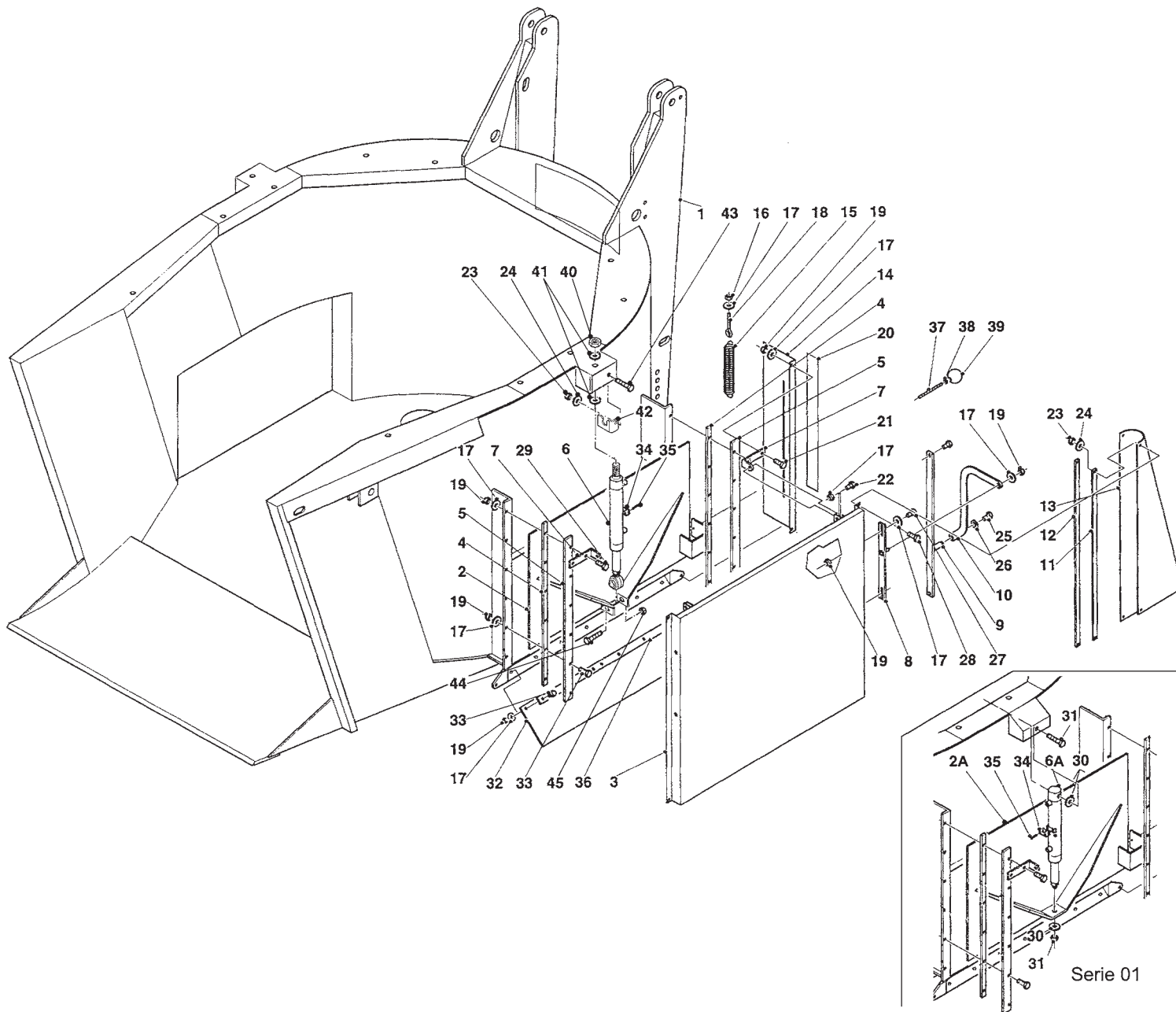


Bestellnummer  
 Bestellnummer  
 Ordernummer  
 Num. a commander

1	12925	1	
2A	12981	1	Rechts serie 01
2B	14084	1	Rechts serie  → 02
2C	12982	1	Links serie 01
2D	14085	1	Links serie  → 02
3	13105	1	
4	28808	4	
5	28809	4	
6A	51202	2	serie 01
6B	51247	2	
7	28814	4	
8	12591	2	
9	12604	2	
10	29241	2	
11	29243	4	
12	29242	4	
13A	60407	2	RV/LA
13B	60408	2	RA/LV
14	40666	2	
15	65021	2	
16	86210	2	M10
17	85110	74	M10
18	84174	2	M10 x 80 x 14
19	86210	48	M10
20	91143	2	
21	80831	4	M8 x 30
22	81040	4	M10 x 40
23	86208	12	M8
24	85108	12	M8
25	80812	2	M8 x 12
26	85109	2	M8
27	81025	4	M10 x 25
28	80821	8	M8 x 20
29	81045	4	M10 x 45
30	85116	1	M16
31	81680	1	M16 x 80
32	60399	1	
33	81036	34	M10 x 35
34	90721	1	
35	84410	2	M6 x 30

92193/1

Afbeelding 2 : Frame  
Abbildung 2 : Rahmen  
Picture 2 : Frame



Bestelnummer  
Bestellnummer  
Ordernummer  
Num. a commander

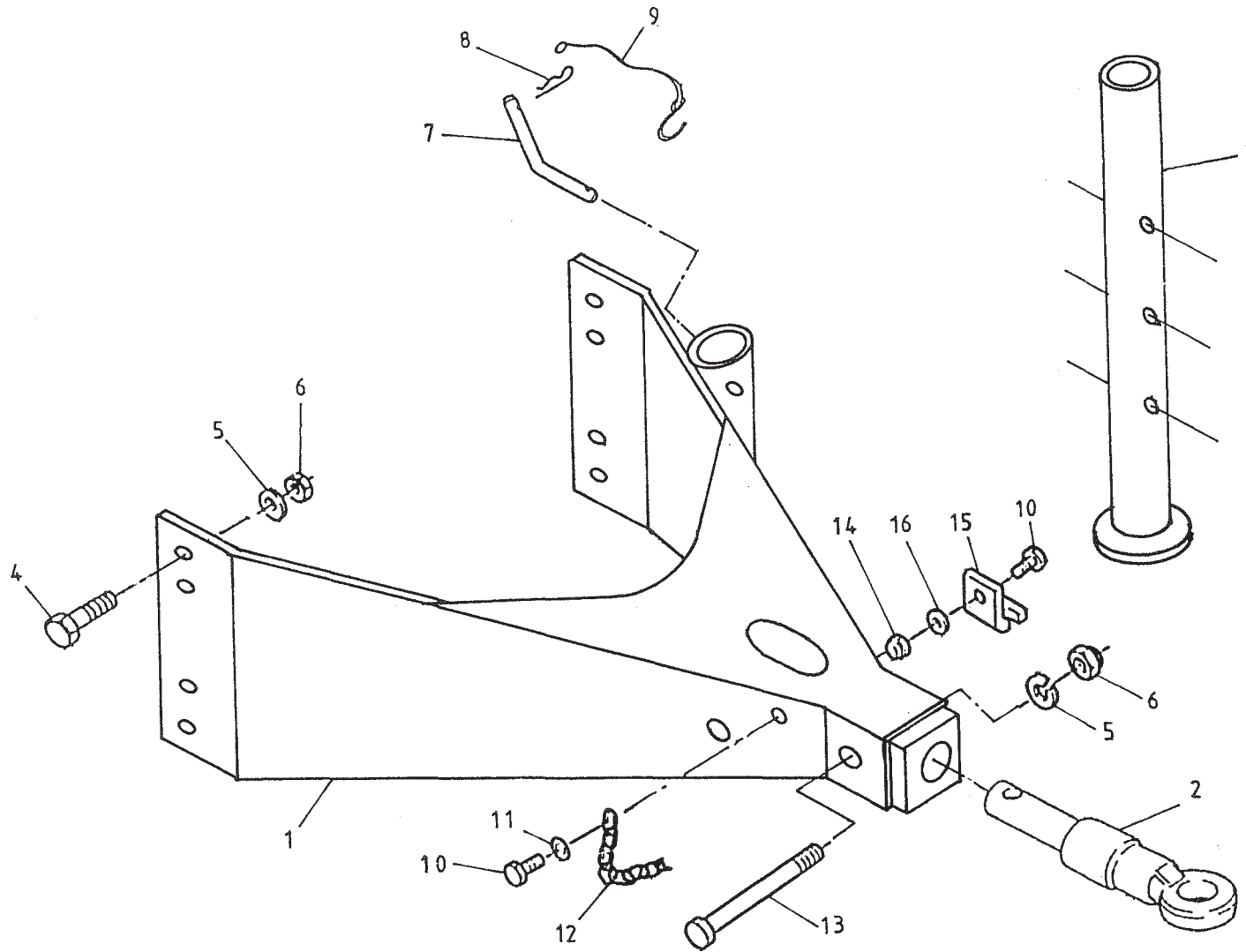
36	28813	1	
37	84947	2	M6 x 100
38	86106	2	M6
39	60368	2	
40	86216	2	M16
41	85259	4	
42A	44753	1	Rechts
42B	44752	1	Links
43	80826	2	M8 x 25
44	82090	2	M20 x 90
45	86220	2	M20

92193/1

Afbeelding 3 : Dissel  
 Abbildung 3 : Deichsel  
 Picture 3 : Drawbar

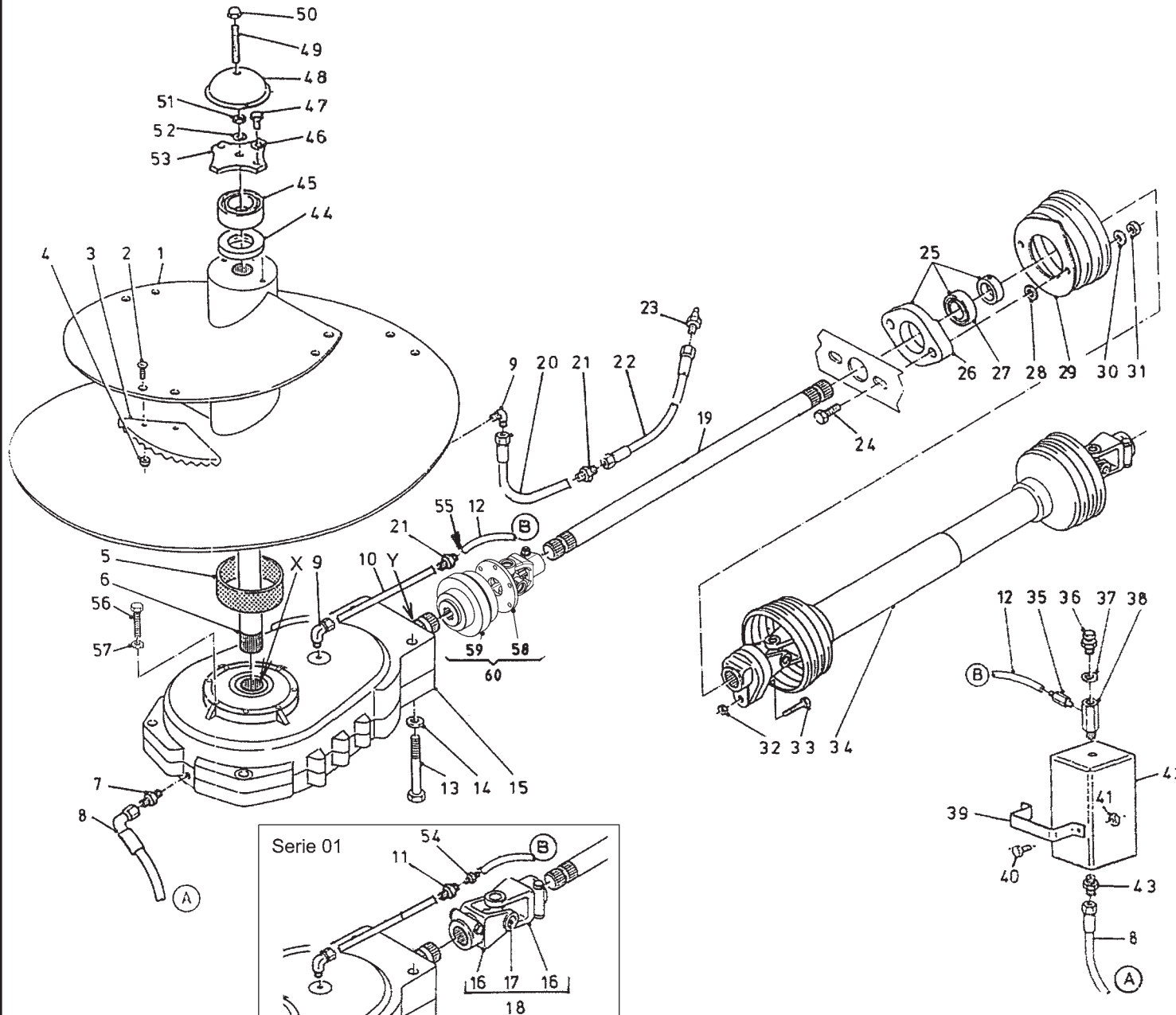
bestelnummer  
 ordernummer  
 Num. à commander  
 Bestellnummer

1	13078	1	
2	12380	1	
3	11356	1	
4	82061	8	M20 x 60 8.8
5	85120	9	M20
6	86220	9	M20
7	31236	1	
8	65004	1	
9	90282	1	
10	80831	2	M8 x 30
11	85109	1	M8
12	39136	1	
13	82013	1	M20 x 130 12.9
14	86208	2	M8
15	24528	1	M8
16	85108	1	



**92193/1**

Afbeelding 4A : Mengvijzel en aandrijving  
 Abbildung 4A : Schnecke und Antrieb  
 Picture 4A : Auger and drive system

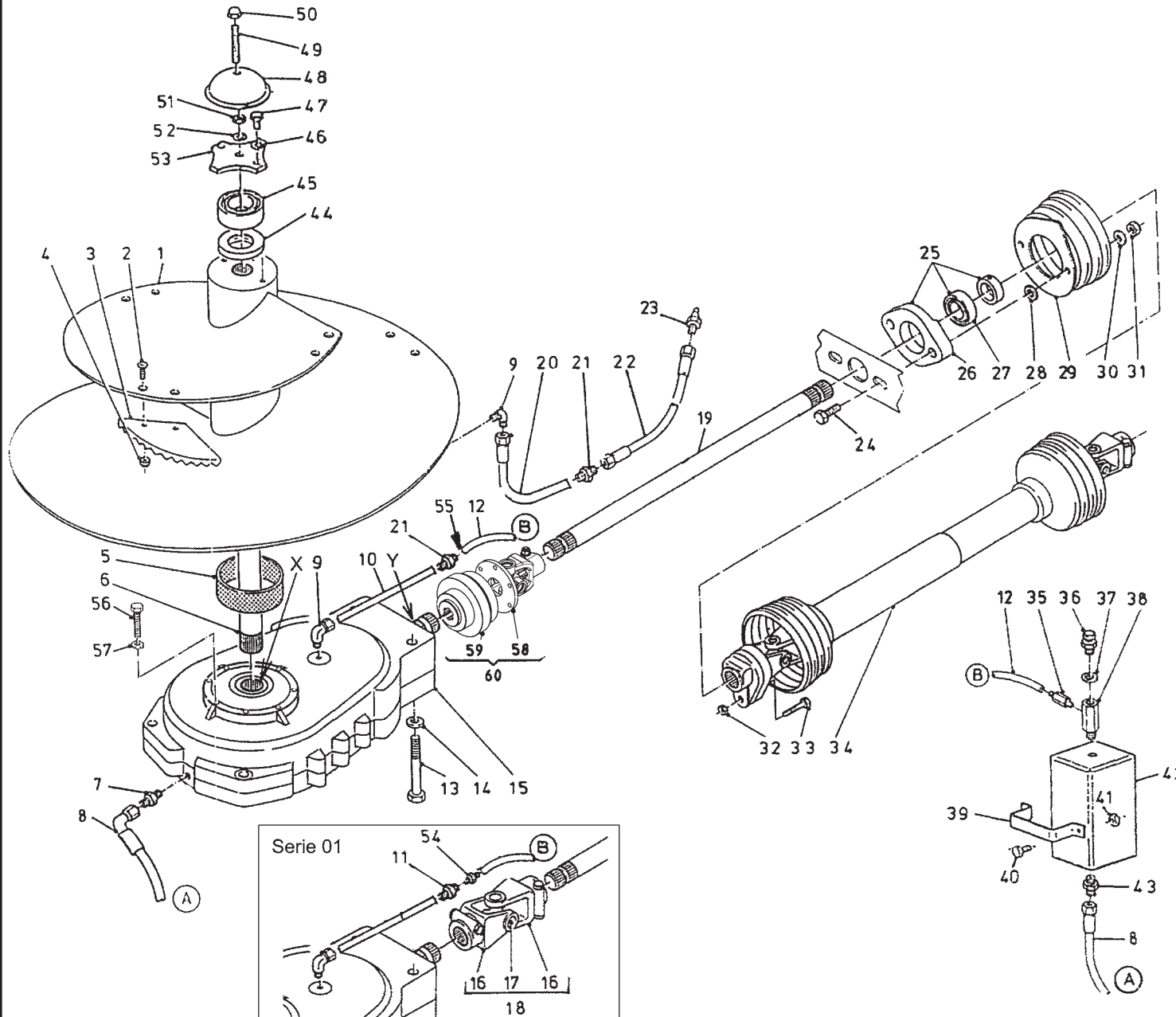


Bestelnummer	Bestellnummer	Ordernummer	Num. a commander
1A	13114	1	serie 01
1B	13964	1	serie  → 02 Twinstream
2	84121	6	M16 x 45
3	31841	3	
4	86216	6	M16
5	51894	1	
6	32327	1	
7	X50112	1	
8	W50665	1	3/8" 1850 RH
9	50120	2	
10	52680	1	
11	50432	1	
12	52673	1	Ø8 L=2000
13	81061	8	M10 x 60
14	85010	8	M10
15	94001	1	
16	94050	2	serie 01
17	94045	1	serie 01
18	94044	1	serie 01
19	32063	1	1 3/8"-6 L=340
20	52666	1	
21	50275	2	
22	50957	1	1/4" 1520 RR
23	89518	1	
24	81071	2	M10 x 70
25	70059	1	
26	70089	1	
27	70090	1	
28	85010	2	M10
29	90499	1	
30	85113	2	M10
31	86110	2	M10
32	86208	1	M8
33	80860	1	M8 x 60
34	90797	1	
35	50285	1	
36	90567	1	
37	85215	1	
38	50176	1	
39	28845	1	



**92193/1**

Afbeelding 4A : Mengvijzel en aandrijving  
 Abbildung 4A : Schnecke und Antrieb  
 Picture 4A : Auger and drive system

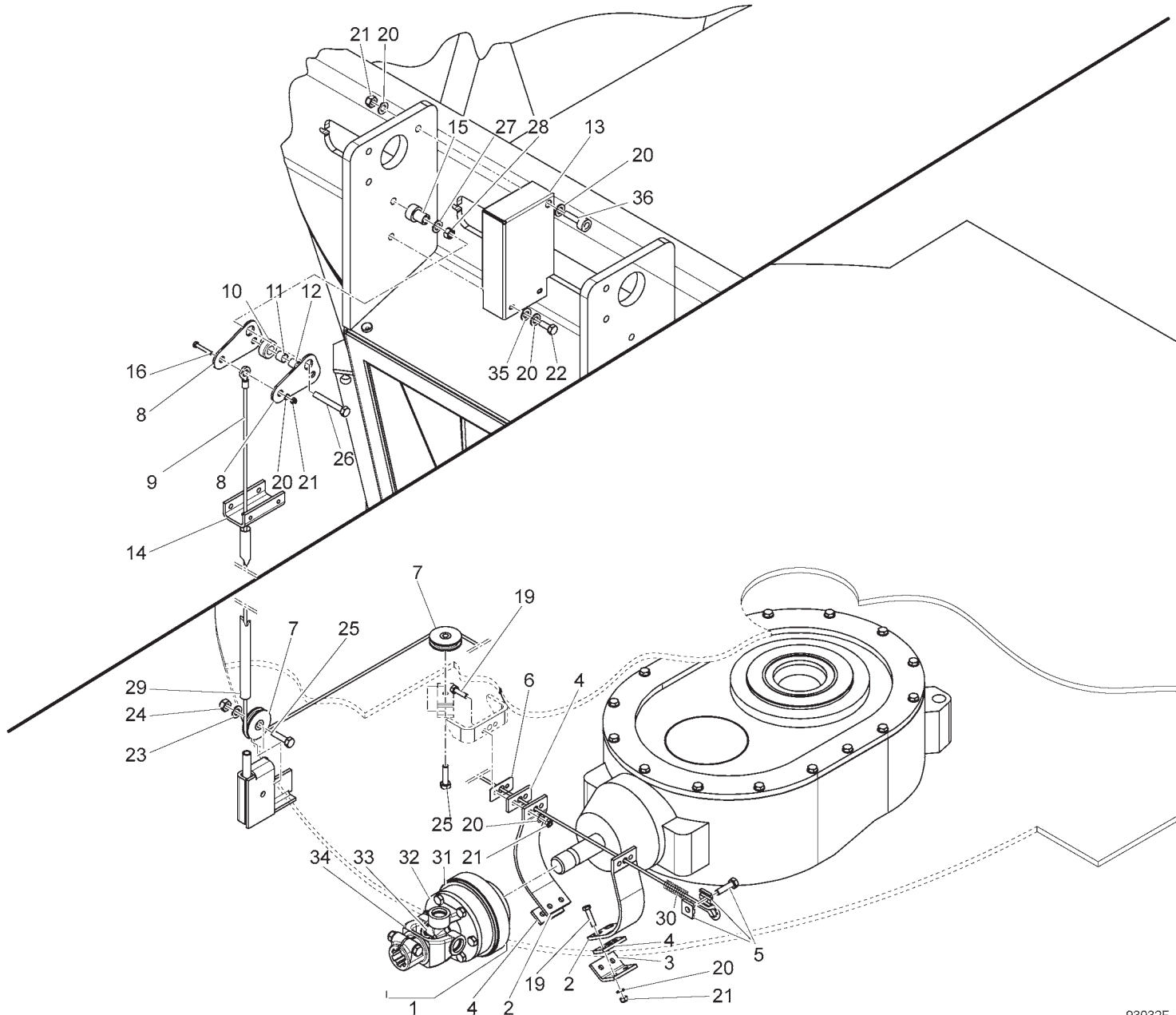


Bestellnummer	Order number	Num. a commander	
40	80831	2	M8 x 30
41	86208	2	M8
42	90974	1	
43	X50112	1	
44	70177	1	
45	70176	1	
46	85012	2	M12
47	81231	2	M12 x 30
48	29209	1	
49	84072	1	M16 x 120
50	86937	1	M16
51	86116	1	M16
52	85016	1	M16
53	29210	1	
54	50286	1	
55	50278	1	Ø8 x Ø6
56	81060	8	M10 x 60
57	85010	8	M10
58	94578	1	G2300 1 <sup>3</sup> / <sub>8</sub> "- 6 serie  → 02
59	94579	1	serie  → 02
60	94440	1	serie  → 02
X	70187	1	90x110x12
Y	70126	1	35x72x10



**92193/1**

Afbeelding 4B : Afschakelkoppeling serie |→ 02  
 Abbildung 4B : Abschaltkupplung Serie |→ 02  
 Picture 4B : Break-shift coupling serie |→ 02

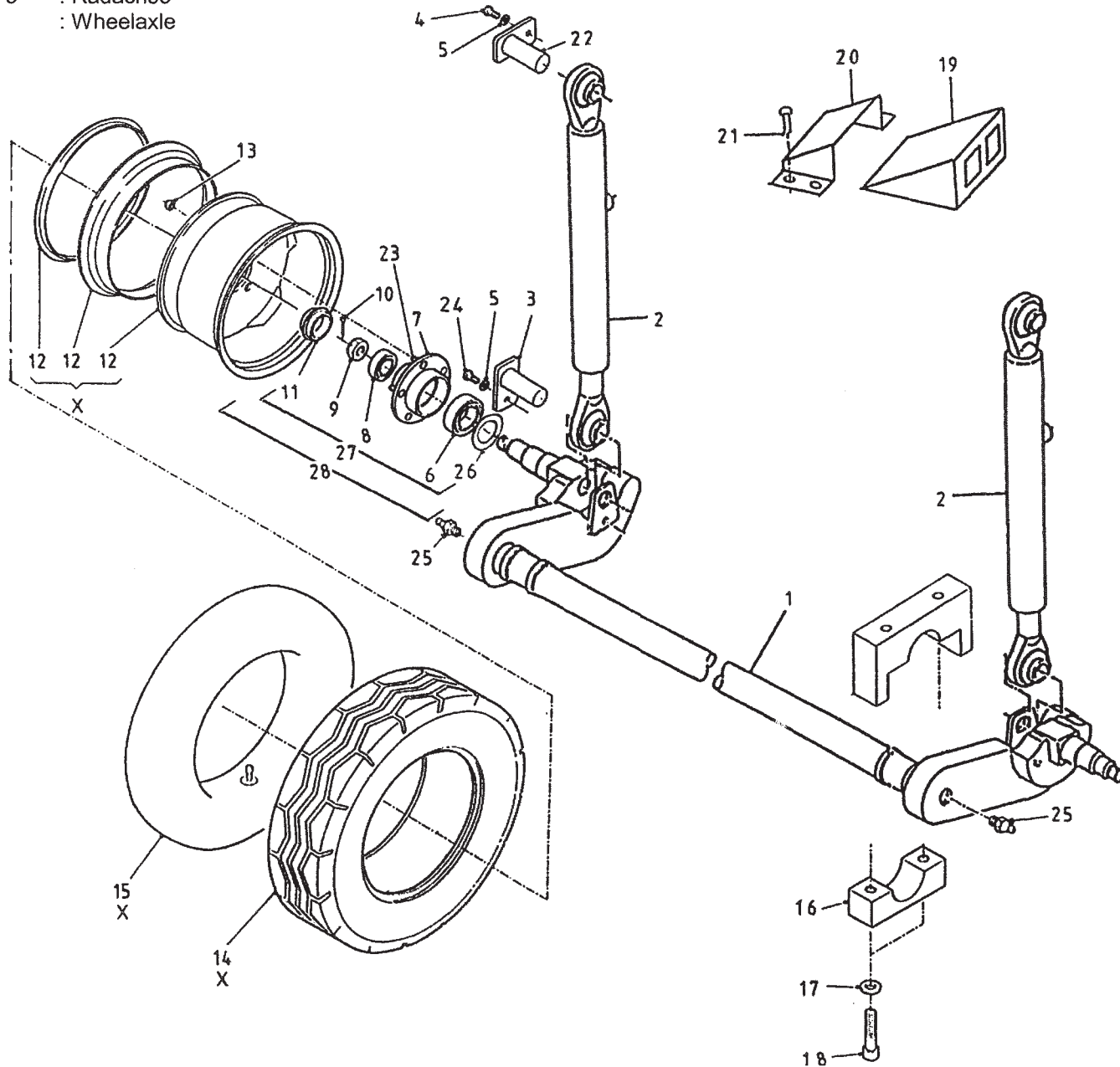


Bestelnummer  
 Bestellnummer  
 Ordernummer  
 Num. a commander

1	94440	1
2	44369	2
3	44370	1
4	60444	3
5	90430	1
6	44845	1
7	31589	2
8	43569	2
9	79082	1 L = 3170
10	32528	1
11	51927	1
12	32529	1
13	13815	1
14	43568	1
15	39298	1
16	80836	1 M8 x 35
19	80831	6 M8 x 30
20	85108	13 M8
21	86208	8 M8
22	80816	1 M8 x 16
23	85110	1 M10
24	86210	1 M10
25	81055	2 M10 x 55
26	81290	1 M12 x 90
27	85112	1 M12
28	86212	1 M12
29	98335	1
30	65096	1
31	94579	1
32	94580	1
33	90615	1
34	94581	1 1 <sup>3</sup> / <sub>8</sub> - 6
35	85008	4 M8
36	84405	1 M8 x 35

92193/1

Afbeelding 5 : Wielstel  
 Abbildung 5 : Radachse  
 Picture 5 : Wheelaxle

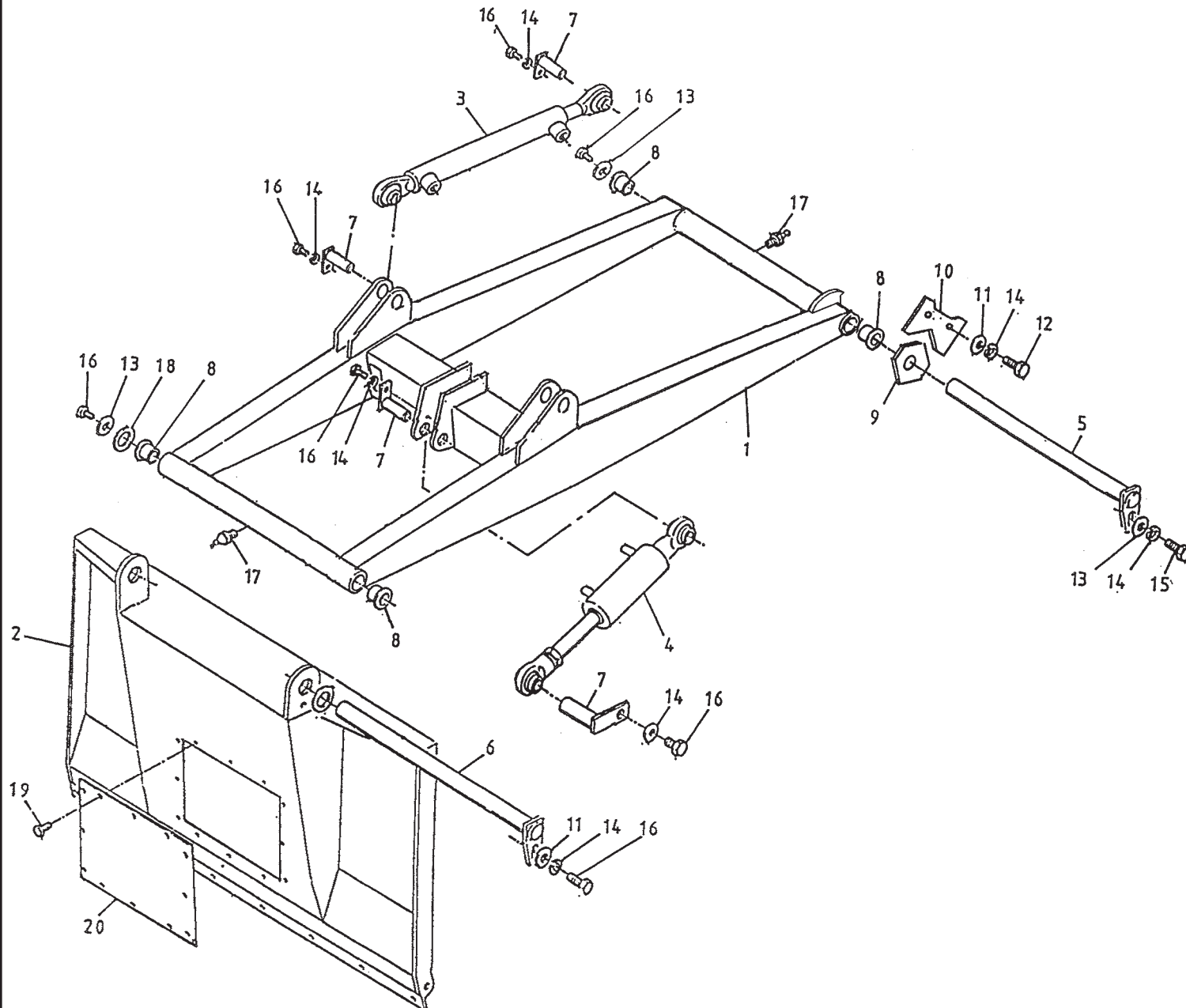


bestelnummer  
 ordernummer  
 Num. à commander  
 Bestellnummer

1	12930	1	
2	51205	2	
3	11980	2	
4	81021	2	M10 x 20
5	85010	5	M10
6	70147	2	30209
7	90778	2	
8	70138	2	30206
9	90780	2	
10	88240	2	Ø4 x 40
11	90781	2	
12	90848	2	5.00 x 10
13	86934	10	M16 x 1.5
14	90849	2	24 x 7.7
15	90850	2	
16	12931	2	
17	85016	4	
18	84459	4	M16 x 70
19	90396	2	
20	90397	2	
21	84717	4	M6 x 12
22	12418	2	
23	84943	10	M16 x 1.5 L=45
24	84942	2	M10 x 16
25	89521	2	3/8"
26	90779	2	
27	90777	2	Complete
28	94047	2	50x50 L=300
X	90837	2	24 x 7.7 10

**92193/1**

Afbeelding 6 : Laadarm en snijbord  
 Abbildung 6 : Ladeschwinge und Schneidplatte  
 Picture 6 : Loading arm and cutting board

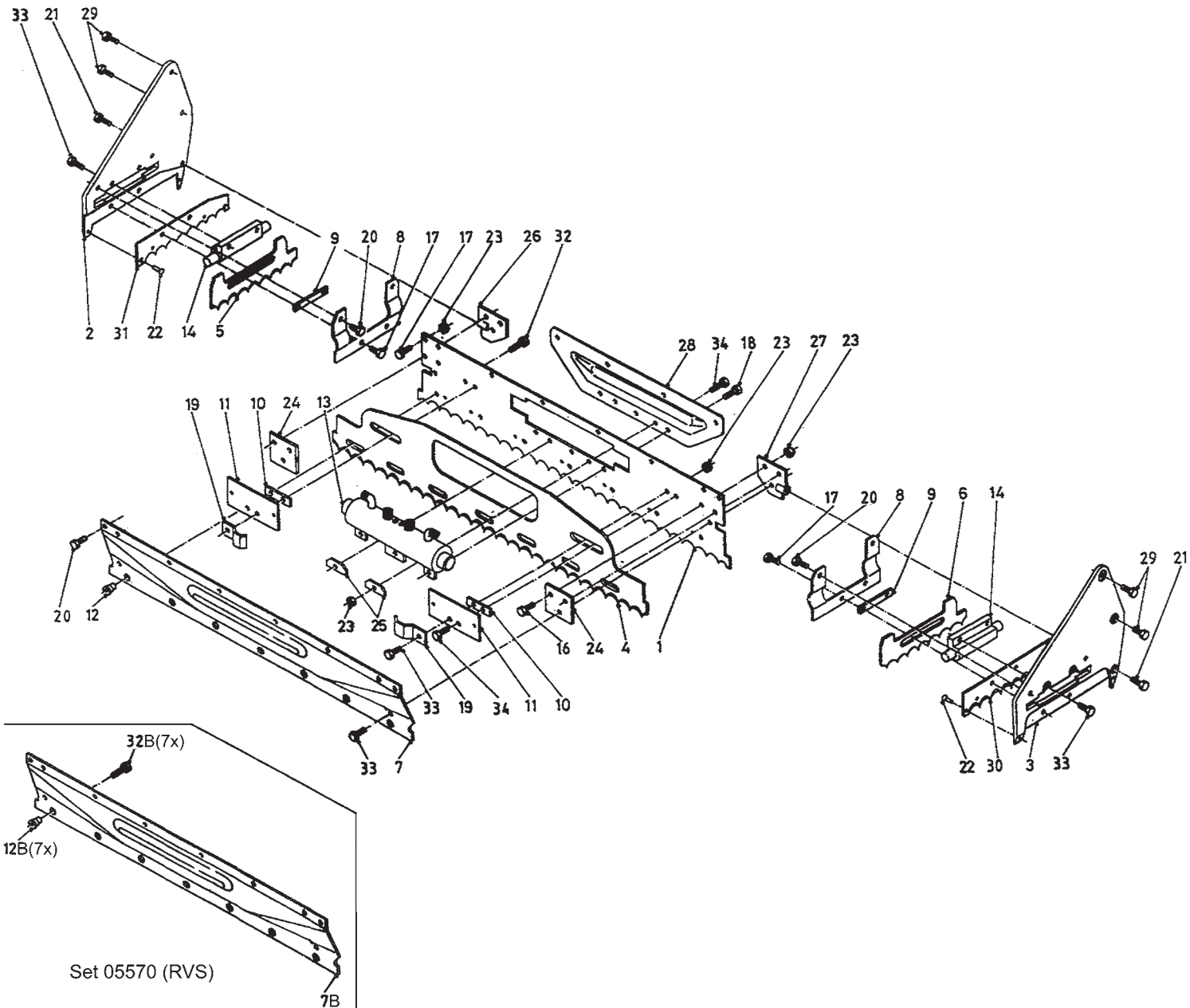


Bestelnummer  
 Bestellnummer  
 Ordernummer  
 Num. a commander

1	12933	1
2	12938	1
3	51204	2
4	51201	1
5	12956	1
6	12932	1
7	11936	6
8	51751	4
9	32251	2
10	28689	2
11	85112	3 M12
12	81241	3 M12 x 40
13	85137	2 M12
14	85012	7 M12
15	81226	1 M12 x 25
16	81221	7 M12 x 20
17	89519	2
18	85335	1
19	84704	12 M8 x 16
20	25542	1

**92193/1**

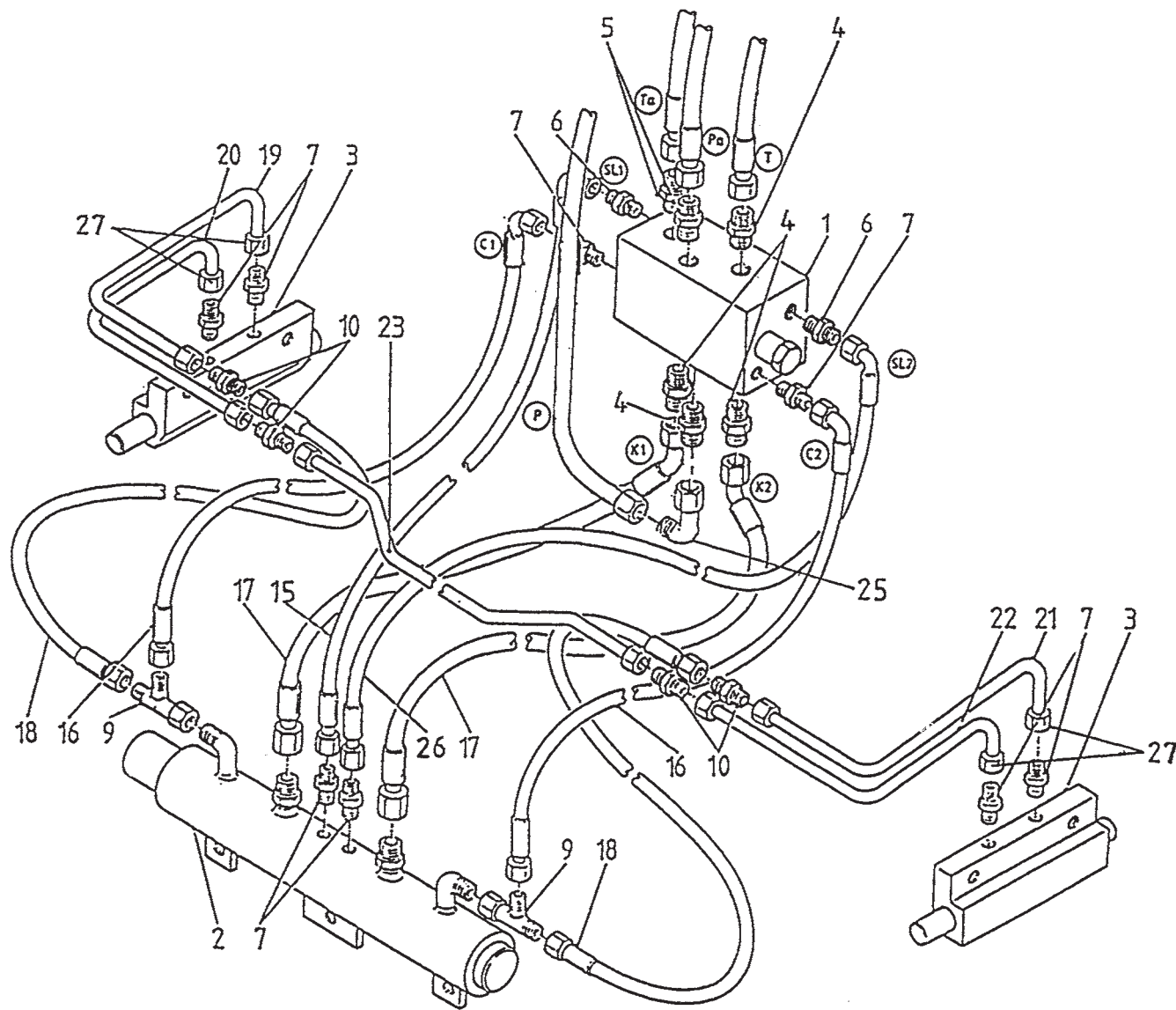
Afbeelding 7 : Messysteem  
 Abbildung 7 : Schneidvorrichtung  
 Picture 7 : Cutting system



Bestelnummer	Bestellnummer	Ordernummer	Num. a commander
1	26846	1	4.8 mm
2	12404	1	
3	12403	1	
4	26108	1	
5	25653	1	
6	25652	1	
7A	26379	1	serie 01
7B	44106	1	RVS serie  → 02
8A	23853	2	serie 01
8B	44127	2	RVS serie  → 02
9	25657	2	
10	25636	2	
11A	26307	2	serie 01
11B	44129	2	RVS serie  → 02
12A	31862	7	serie 01
12B	32549	7	serie  → 02
13	51119	1	
14	51115	2	
16	83921	6	M10 x 25
17	84925	12	M10 x 23
18	83920	3	M10 x 20
19	24153	2	
20	84942	12	M10 x 16
21	83937	2	M12 x 30
22	85246	4	∅ 5 x 20
23	86810	20	M10
24	26184	2	
25	25048	2	
26	12414	1	
27	12413	1	
28	26839	1	
29	83931	4	M16 x 30
30	26347	1	
31	26348	1	
32A	84942	7	M10 x 16 serie 01
32B	84926	7	M10 x 19 serie  → 02
33	83915	6	M10 x 30
34	83934	4	M10 x 22

92193/1

Afbeelding 8 : Stuurblok uitwendig  
 Abbildung 8 : Steuerblock Außenseite  
 Picture 8 : Controlblock and hoses



bestelnummer

ordernummer

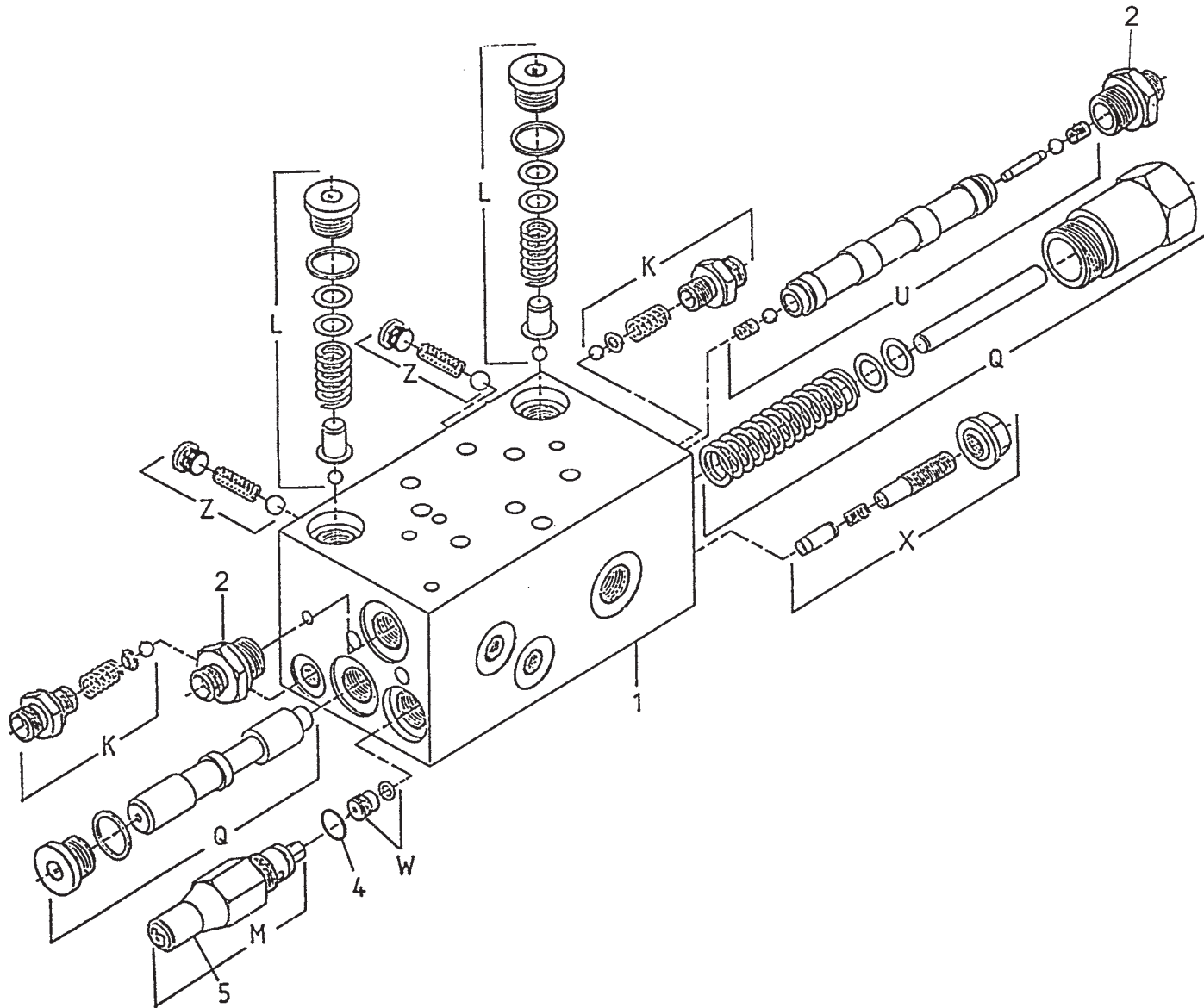
Num. à commander

Bestellnummer

1	53198	1	
2	51119	1	
3	51115	2	
4	X50102	4	
5	X50113	2	
6	X50114	2	
7	X50104	8	
9	X50300	2	
10	X50135	4	
15	W50971	1	¼" 400 H20°
16	W50895	2	¼" 300 RH
17	W50970	2	½"290 R45°
18	W52604	2	¼"340 RR
19	50944	1	
20	50943	1	
21	50946	1	
22	50945	1	
23	52605	1	L=890
25	X50143	1	
26	W50972	1	¼" 400 H20°
27	50430	4	

**92193/1**

Afbeelding 9 : Stuurblok inwendig  
 Abbildung 9 : Steuerblock Innenseite  
 Picture 9 : Hydraulic control block inside



Bestelnummer  
 Bestellnummer  
 Ordernummer  
 Num. a commander

1	53198	1	
2	X50114	2	
4	78053	1	12 x 1.5
5	60260	1	
K	05049	2	10 bar
L	05264	2	200 bar
M	05265	1	230 bar
UA	53150	1	
UB	53533	1	
W	53256	1	
X	53257	1	
Z	05267	2	



92193/1

Afbeelding 10 : Achter- en zijmescilinder

Abbildung 10 : Heck- und Seitenzylinder

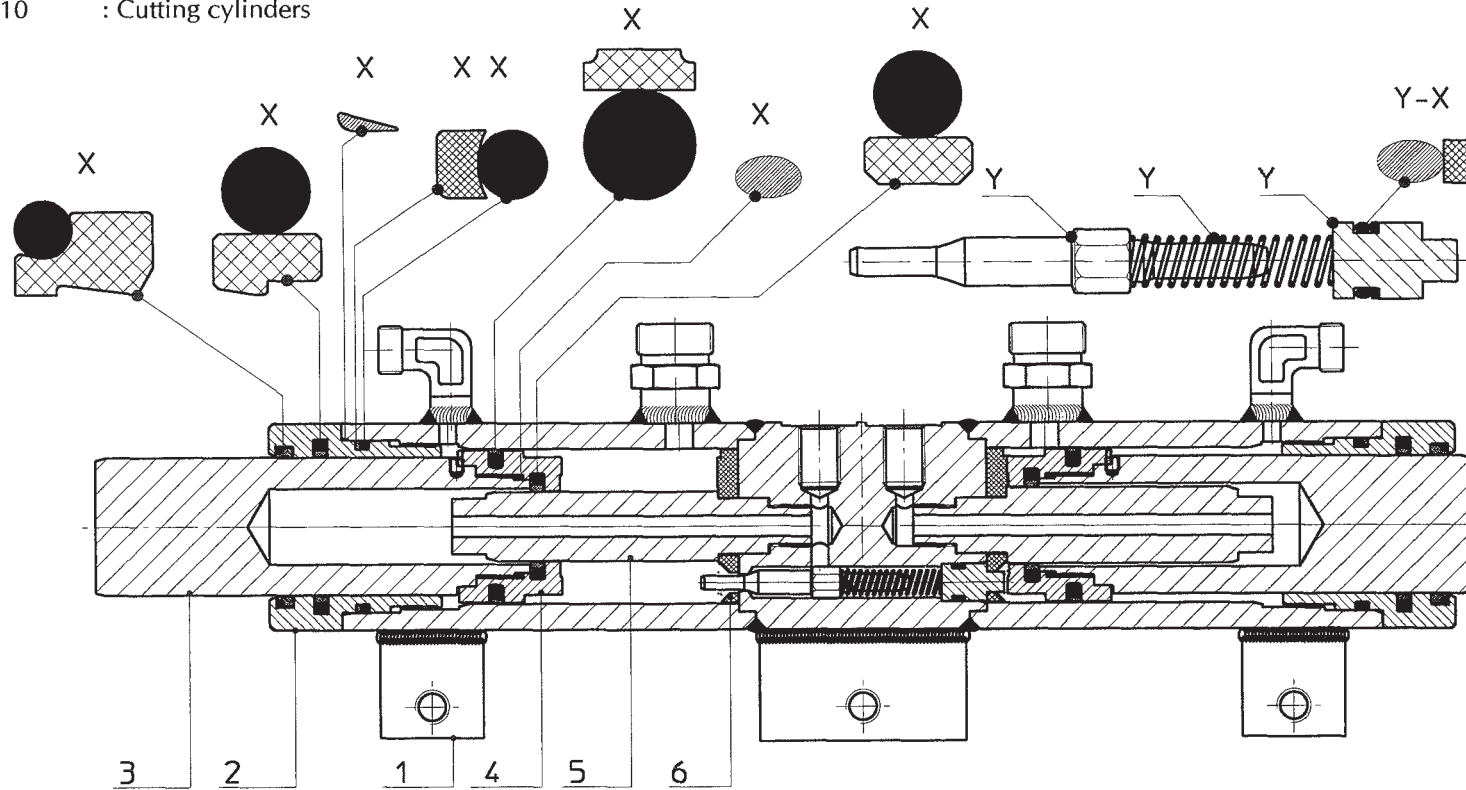
Picture 10 : Cutting cylinders

bestelnummer

ordernummer

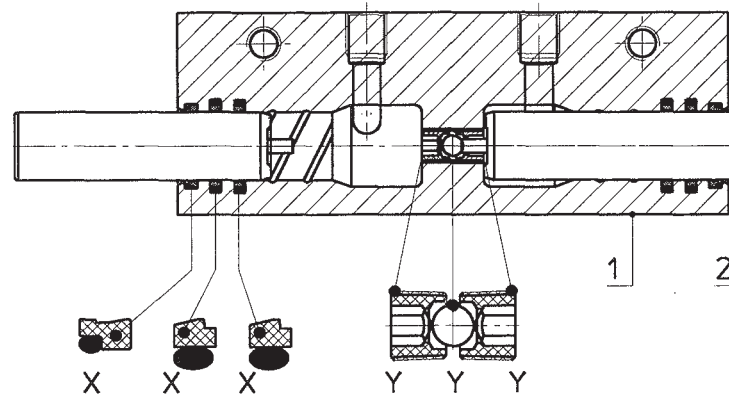
Num. à commander

Bestellnummer



51119

1	12106	1	
2	31421	2	
3	31455	2	1 ring
4	31453	2	
5	31454	2	18 mm
6	31428	2	
X	05306	1	
Y	05297	1	



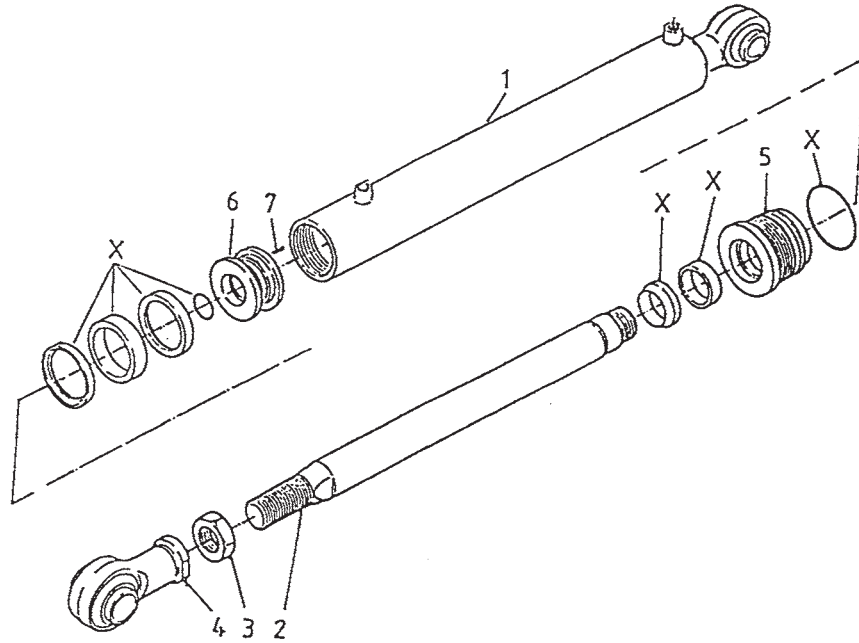
51115

1	31772	1	
2	31436	2	
X	05294	1	
Y	05298	1	



92193/1

Afbeelding 11 : Intrekcilinder  
 Abbildung 11 : Ladezylinder  
 Picture 11 : Loading cylinder



bestelnummer  
 ordernummer  
 Num. à commander  
 Bestellnummer

51201

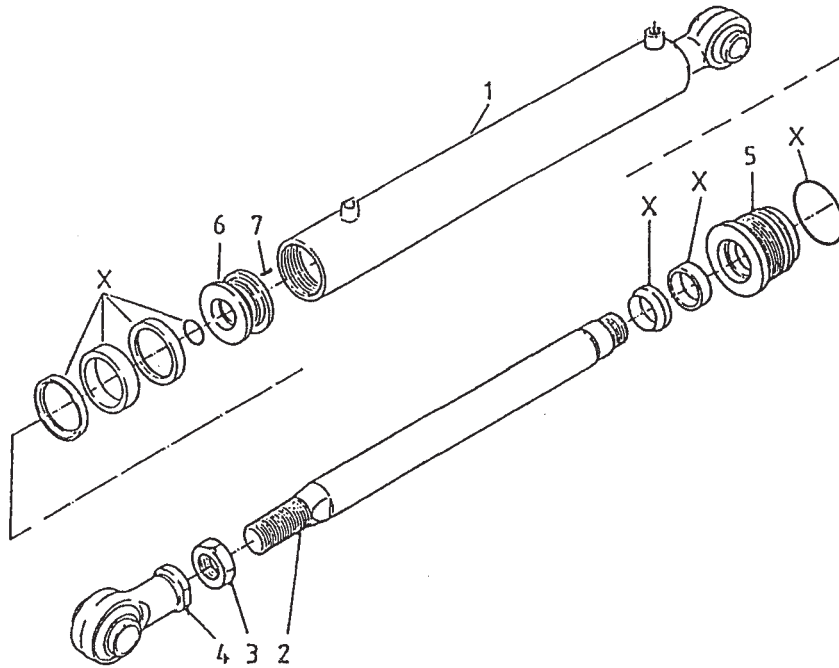
1	12939	1	
2	32243	1	
3	86140	1	M40 x 2
4	11671	1	
5	31741	1	
6	31446	1	
7	84119	1	M6 x 10
X	05350	1	

92193/1

Afbeelding 12 : Aanzetcilinder

Abbildung 12 : Vorschubzylindern Schneiden

Picture 12 : Main cylinder cutting



bestelnummer

ordernummer

Num. à commander

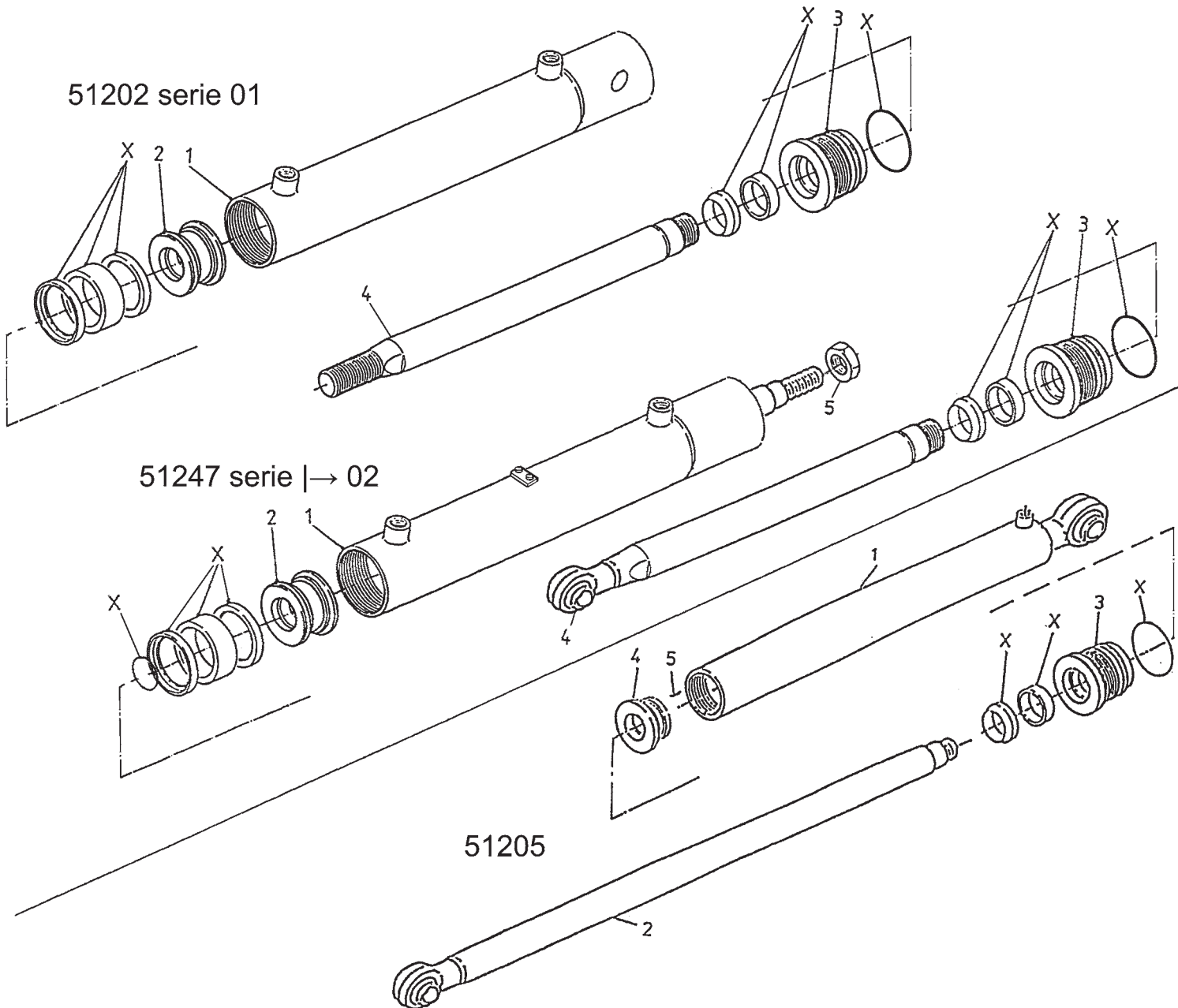
Bestellnummer

51204

1	12937	1	
2	32249	1	
3	86140	1	M40 x 2
4	11671	1	
5	32247	1	
6	32077	1	
7	84119	1	M6 x 10
X	05464	1	

**92193/1**

Afbeelding 13 : Doseerklap- en wielarmcilinder  
 Abbildung 13 : Dosierklappe und Radarmzylinder  
 Picture 13 : Unloading door and wheelaxle cylinder



Bestelnummer  
 Bestellnummer  
 Ordernummer  
 Num. a commander

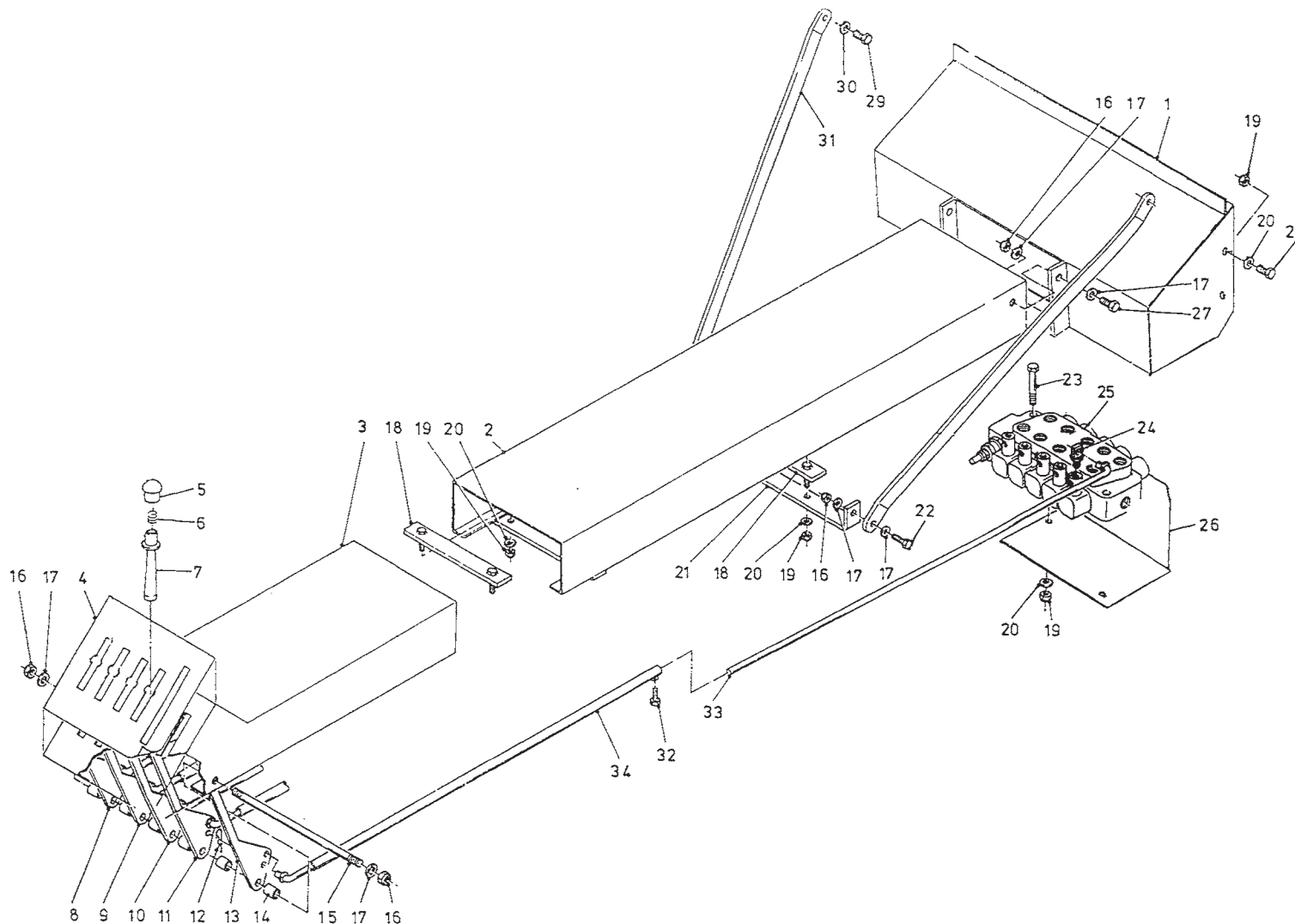
51202			
1	13124	1	
2	30860	1	
3	31460	1	
4	32333	1	
X	05309	1	

51247			
1	13548	1	
2	32450	1	
3	32407	1	
4	13549	1	
5	86216	1	
X	05516	1	

51205			
1	12633	1	
2	12977	1	
3	31930	1	
4	31643	1	
5	84119	1	M6 x 10
X	05423	1	

92193/1

Afbeelding 14 : Handventielen  
 Abbildung 14 : Handventilen  
 Picture 14 : Manual control

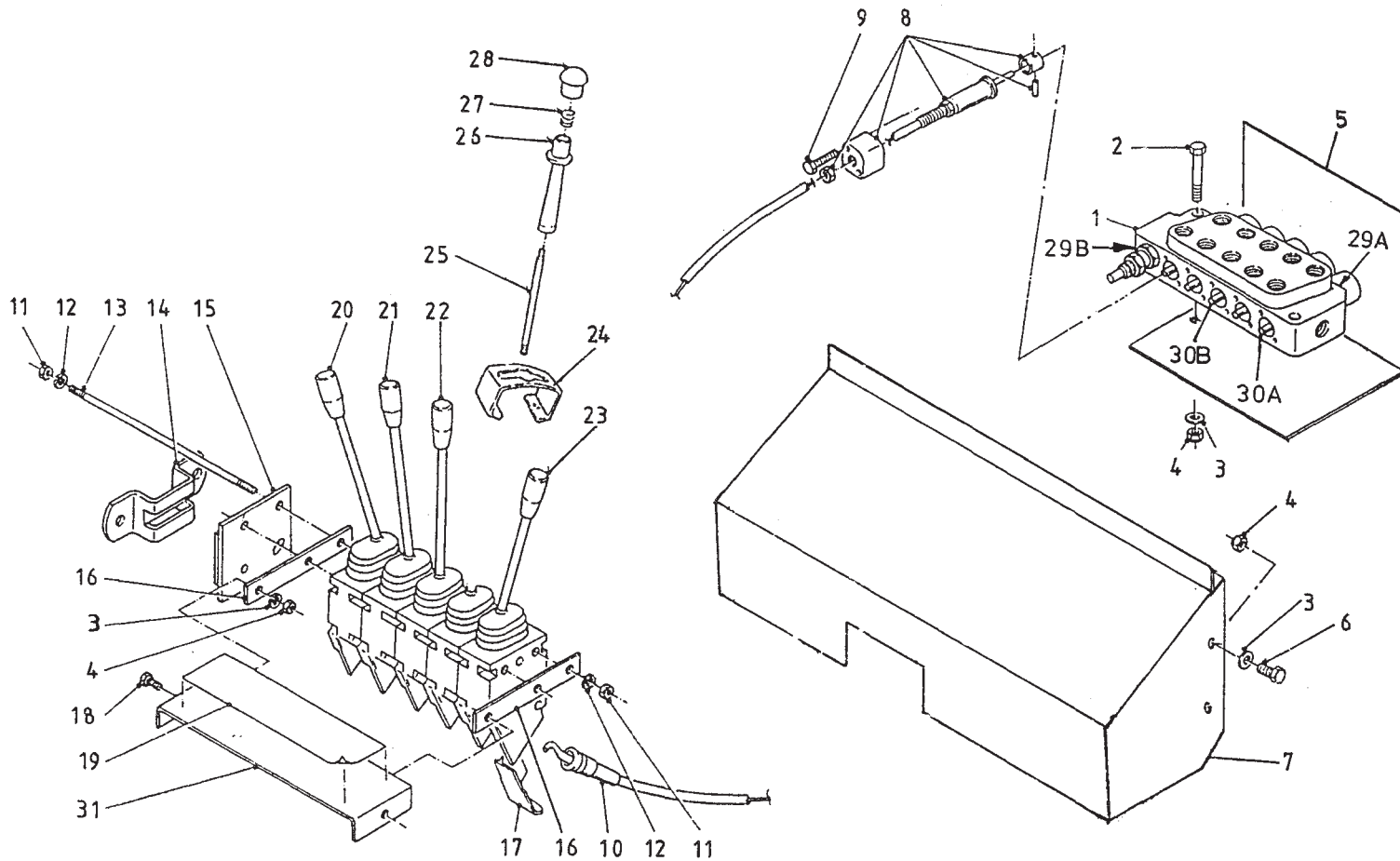


bestelnummer  
 ordernummer  
 Num. à commander  
 Bestellnummer

1	12980	1	
2	13128	1	
3	12001	1	
4	91361	1	
5	60396	1	
6	65090	1	
7	60395	1	
8	29317	1	39° R
9	25571	1	26° R
10	25570	1	13° R
11	13042	1	
12	65079	10	
13	25568	1	13° L
14	25562	6	
15	31755	1	
16	86210	6	M10
17	85110	10	M10
18	12023	2	
19	86208	10	M8
20	85108	10	M8
21	25553	1	
22	81036	2	M10 x 35
23	80845	2	M8 x 45
24	12025	5	
25	53485	1	
26	28934	1	
27	81026	2	M10 x 25
28	80826	4	M8 x 25
29	81226	1	M12 x 25
30	85112	2	M12
31	29319	2	
32	80616	5	M6 x 16
33	13129	5	
34	12004	5	

92193/1

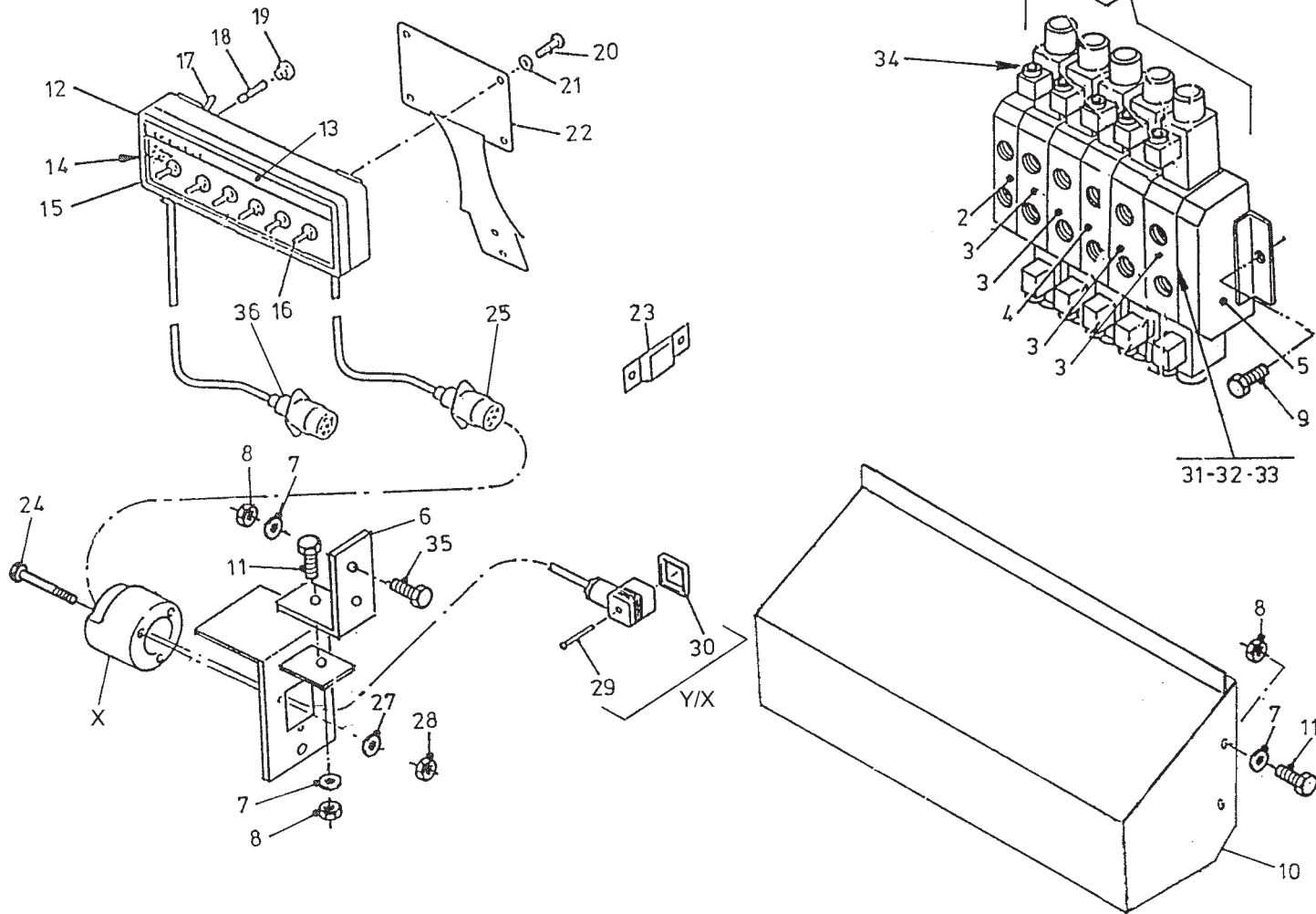
Afbeelding 15 : Mechanische bediening  
 Abbildung 15 : Mechanische Fernbedienung  
 Picture 15 : Mechanical remote control



bestelnummer		ordernummer	
Num. à commander		Bestellnummer	
1	53485	1	
2	80845	2	M8 x 45
3	85108	10	M8
4	86208	10	M8
5	28934	1	
6	80831	4	M8 x 30
7	29378	1	
8	53231	5	
9	84480	10	M6 x 45
10	79059	5	
11	86206	6	M6
12	85106	6	M6
13	84045	3	M6 x 240
14	20199	1	
15	11139	1	
16	22244	2	
17	60210	5	
18	80816	2	M8 x 16
19	91361	1	
20	53487	1	45° R
21	53128	1	30° R
22	53127	1	15° R
23	53129	1	15° L
24	28997	1	
25	53478	1	
26	60395	1	
27	65090	1	
28	60396	1	
29A	78126	10	15.08x2.62/70
29B	78128	1	17.86x2.62/70
30A	53430	4	
30B	53434	1	
31	22245	1	

**92193/1**

Afbeelding 16 : Elektrische bediening  
 Abbildung 16 : Elektrische Fernbedienung  
 Picture 16 : Electrical remote control



Bestellnummer  
 Bestellnummer  
 Ordernummer  
 Num. a commander

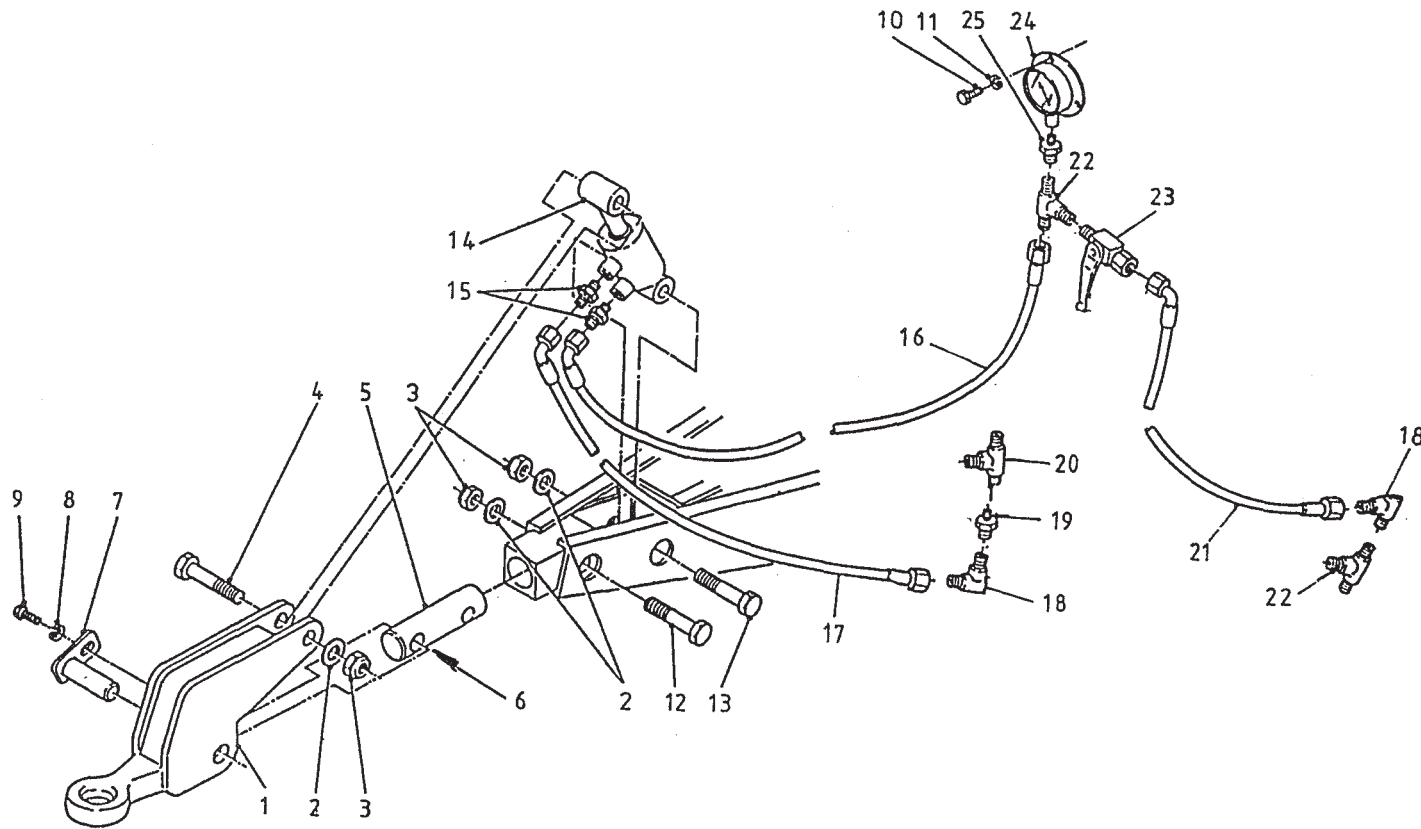
1	53486	1	HDS11
2	53404	1	
3	53405	4	
4	53410	1	
5	53407	1	
6	29468	1	
7	85108	7	M8
8	86208	7	M8
9	84420	2	M8 x 16
10	29379	1	
11	80831	5	M8 x 30
12	98197	1	
13	91015	1	
14	98051	1	
15	98113	6	
16	98056	6	
17	98054	1	
18	98053	1	
19	98052	1	
20	80610	4	M6 x 10
21	85106	4	M6
22	40420	1	
23	24644	1	
24	84476	3	M5 x 35
25	98157	1	
26	12358	1	
27	85105	3	M5
28	86205	3	M5
29	84711	12	M3 x 35
30	60180	12	
31	78143	18	17,12x2,62/90
32	78144	6	10,77x2,62/20
33	78132	6	12,42x2,62/90
34	78134	12	15,6x1,78/70
35	84125	2	M8 x 25
36	98159	1	
X	98147	1	Cable complete
Y	98226	1	Connector complete

92193/1

Afbeelding 17 : Hydraulische weeginstallatie

Abbildung 17 : Hydraulischer Wiegeeinrichtung

Picture 17 : Hydraulic weighing system



bestelnummer

ordernummer

Num. à commander

Bestellnummer

1	12623	1	
2	85020	3	M20
3	86220	3	M20
4	82010	1	M20 x 100 12.9
5	32086	1	
6	51747	2	
7	12418	1	
8	85010	1	M10
9	81021	1	M10 x 20
10	80620	3	M6 x 20
11	85106	3	M6
12	82013	1	M20 x 130 12.9
13	82012	1	M20 x 120 12.9
14	51195	1	
15	X50104	2	
16	W50700	1	¼" 1800 RH
17	W50627	1	¼" 2250 RH
18	X50147	2	
19	50157	1	
20	X50309	1	
21	W50636	1	¼" 750 RH
22	X50300	1	
23	51027	1	
24	53476	1	
25	50415	1	

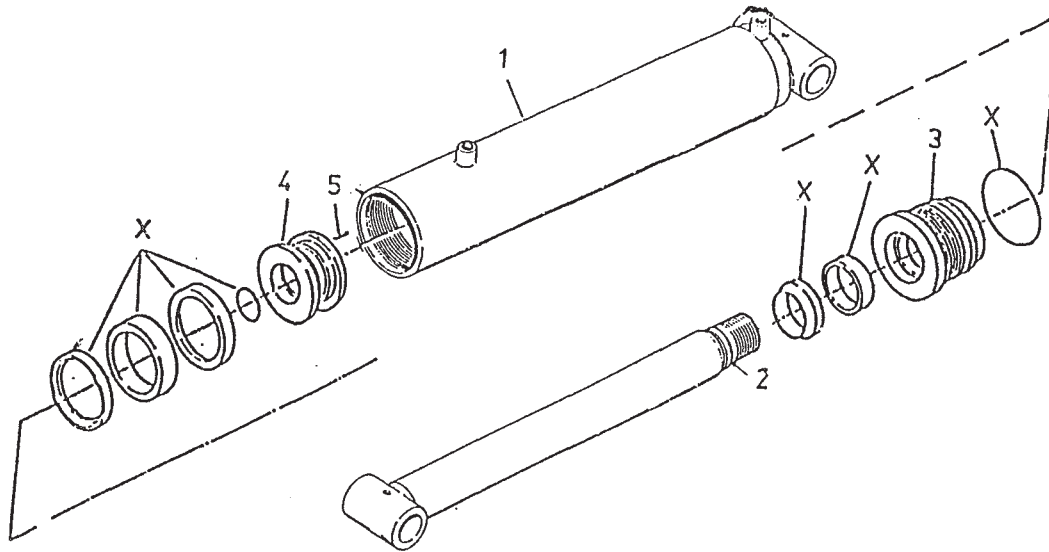


92193/1

Afbeelding 18 : Weegcilinder

Abbildung 18 : Wiegezylinder

Picture 18 : Weighing cylinder



bestelnummer

ordernummer

Num. à commander

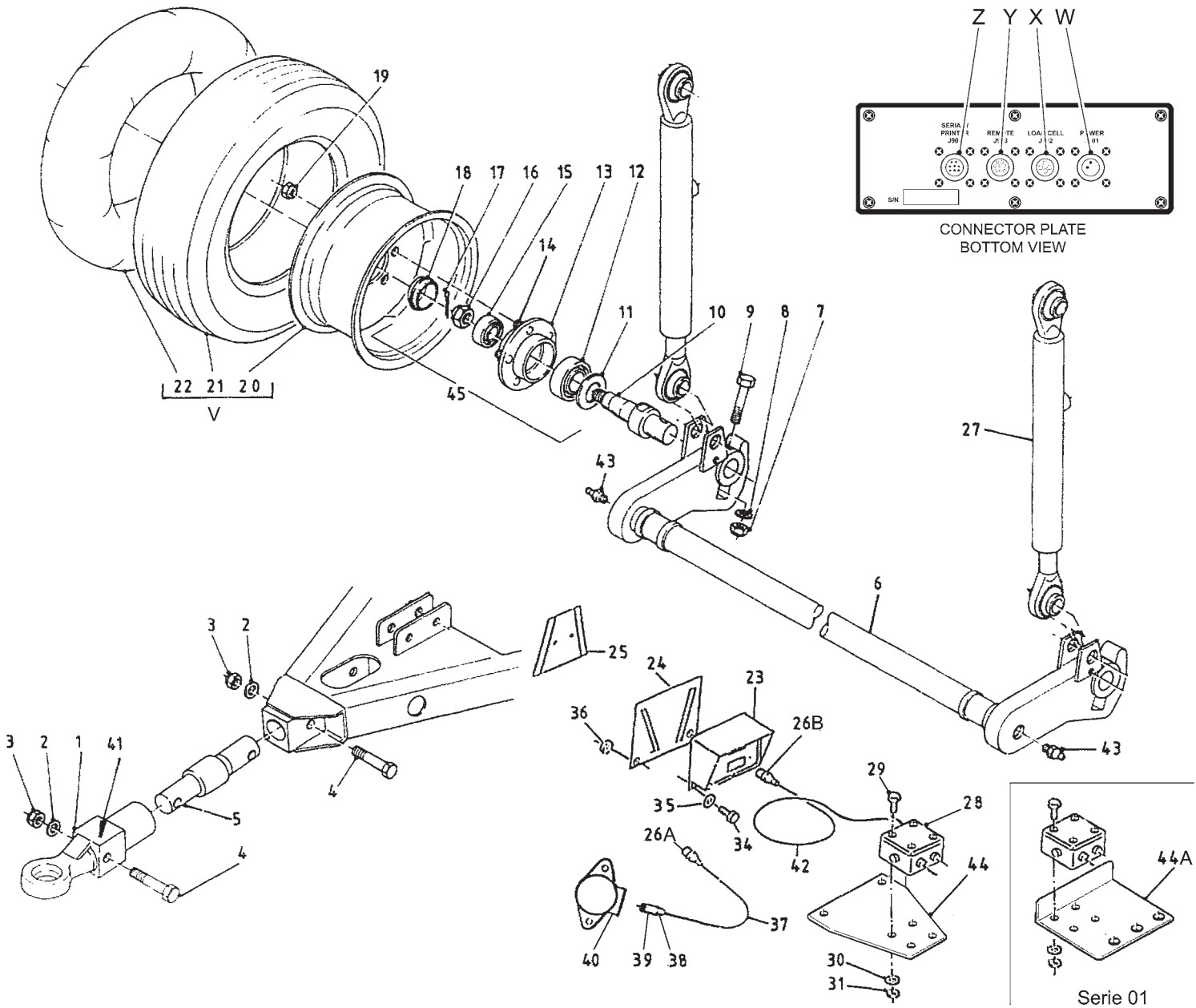
Bestellnummer

51195

1	12415	1	
2	12796	1	
3	31949	1	
4	32182	1	
5	84119	1	M6 x 10
X	05455	1	

**92193/1**

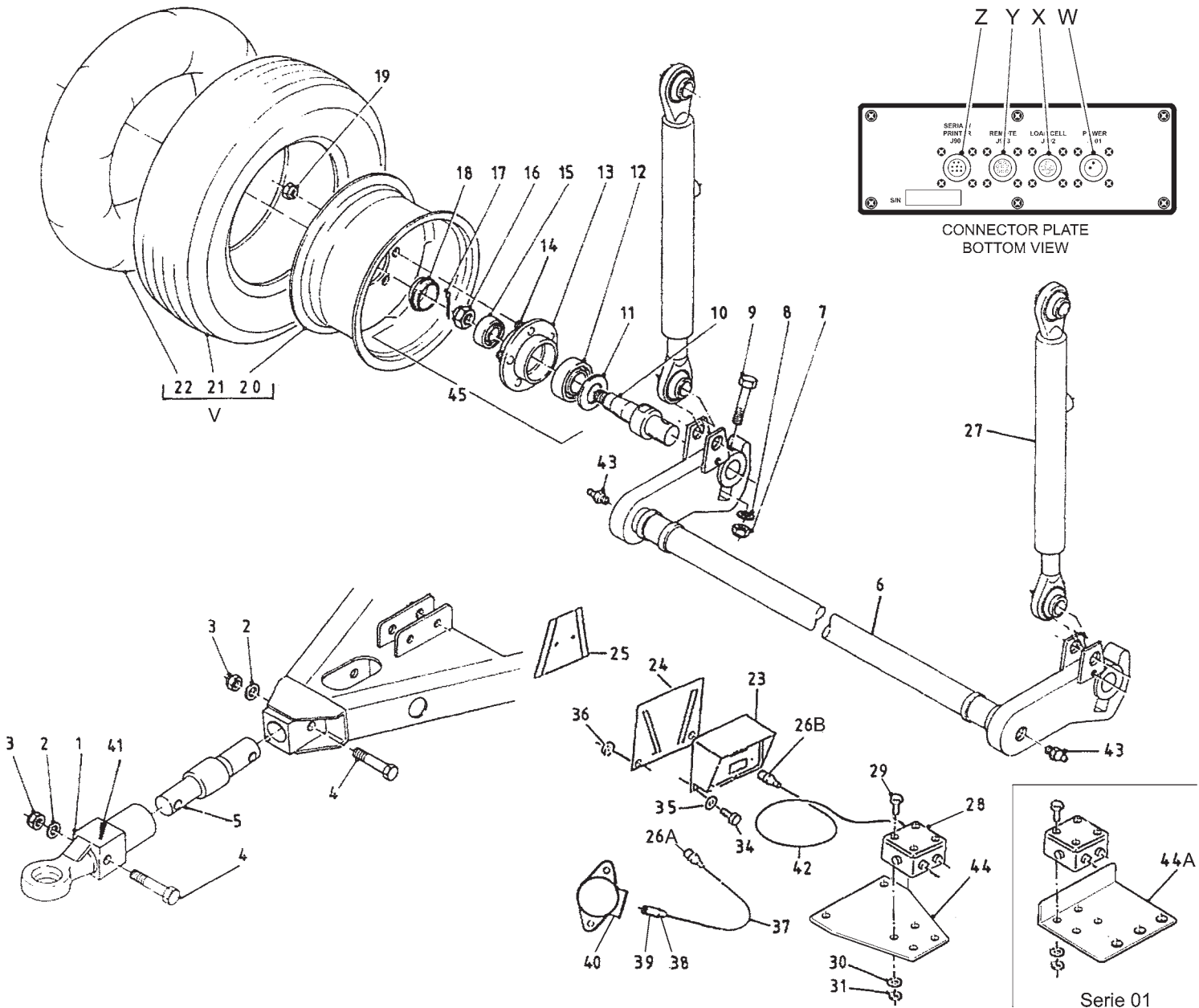
Afbeelding 19 : Elektronische weeginstallatie  
 Abbildung 19 : Elektronische Waage  
 Picture 19 : Electronic weighing system



Bestellnummer	Bestellnummer	Bestellnummer
Ordernummer	Ordernummer	Ordernummer
Num. a commander	Num. a commander	Num. a commander
1	12474	1
2	85120	2 M20
3	86220	2 M20
4	82013	2 M20 x 130
5	90743	1
6	13134	1
7	86216	2 M16
8	85116	2 M16
9	81616	2 M16 x 160
10	90782	2
11	90779	2
12	70147	2 30209
13	90778	2
14	84943	10 M16 x 1.5 H=45
15	70138	2 3020
16	90780	2 M27 x 1.5
17	88240	2 Ø 4 x 40
18	90781	2
19	86934	10 M16 x 1.5
20	90848	2 5.00 x 10
21	90849	2 24 x 7.7
22	90850	2
23A	94007	1 EZ2000
23B	90977	1 EZ2000V
23C	94028	1 EZ2000 R/S
23D	94029	1 EZ2000V R/S
24	40503	1
25	40504	1
26A	05506	1 J901
26B	05507	1 J902
26C	05508	1 J903
26D	05509	1 J904
27	51219	2
28	90482	1 Box + cable complete
29	84485	4 M5 x 20
30	85105	4 M5
31	86505	4 M5
34	80816	2 M8 x 16
35	85108	2 M8
36	86208	2 M8

**92193/1**

Afbeelding 19 : Elektronische weeginstallatie  
 Abbildung 19 : Elektronische Waage  
 Picture 19 : Electronic weighing system



Bestelnummer	Bestellnummer	Ordernummer	Num. a commander
37	90483	1	L = 3000 cable complete
39	98239	1	
39	98238	1	
40	98237	1	
41	91216	1	
42	90719	1	L = 5000 cable complete
43	89521	2	$\frac{3}{8}$ "
44A	40668	1	serie 01
44B	44732	1	serie   → 02
45	90777	2	complete
V	90837	2	
W	05389	1	J901
X	05390	1	J902
Y	05510	1	J903
Z	05511	1	J904

Serie 01

92193/1

Afbeelding 20 : Slangenschema handbediening

Abbildung 20 : Schaltplan Handbedienung

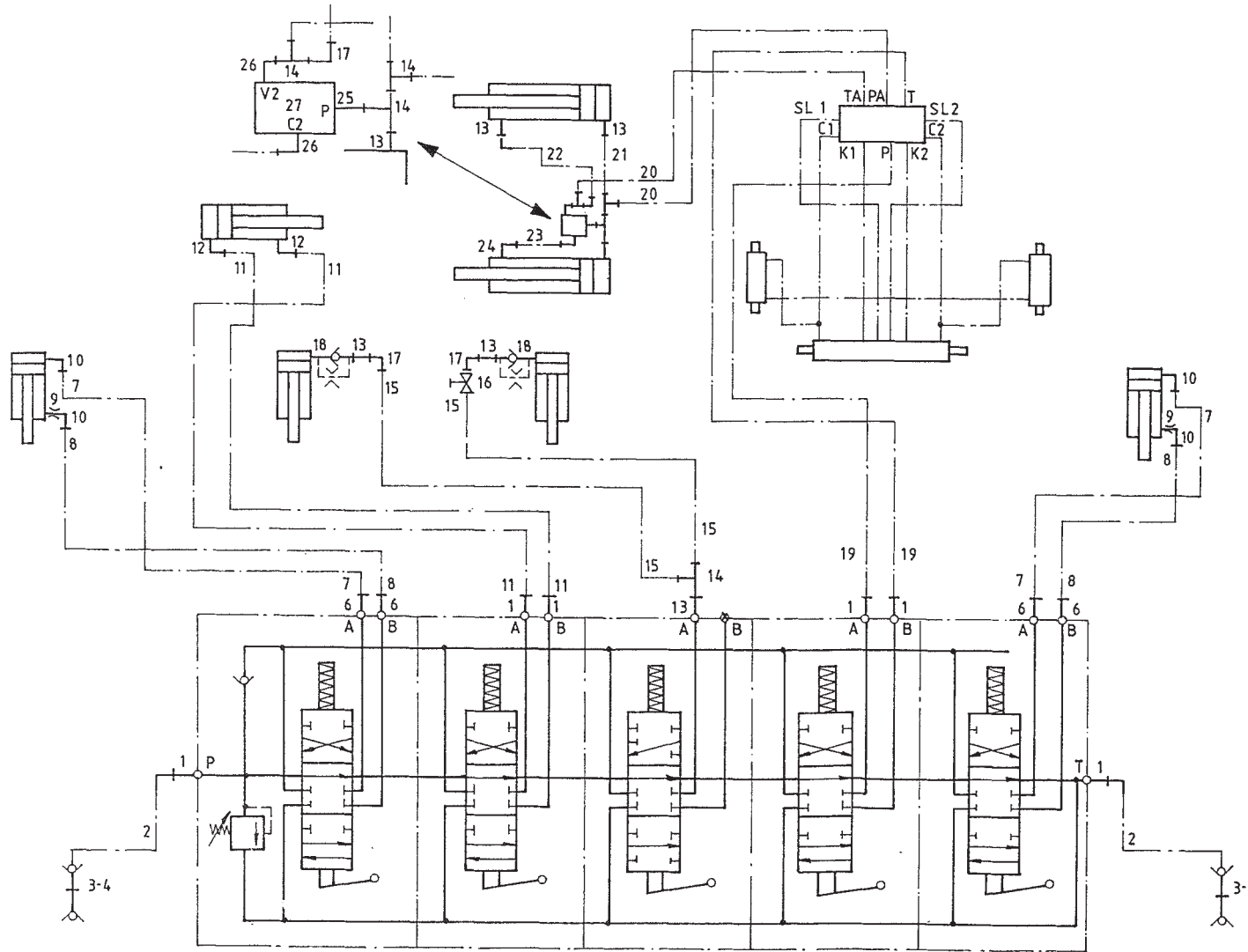
Picturre 20 : Hose-scheme manual control

bestelnummer

ordernummer

Num. à commander

Bestellnummer



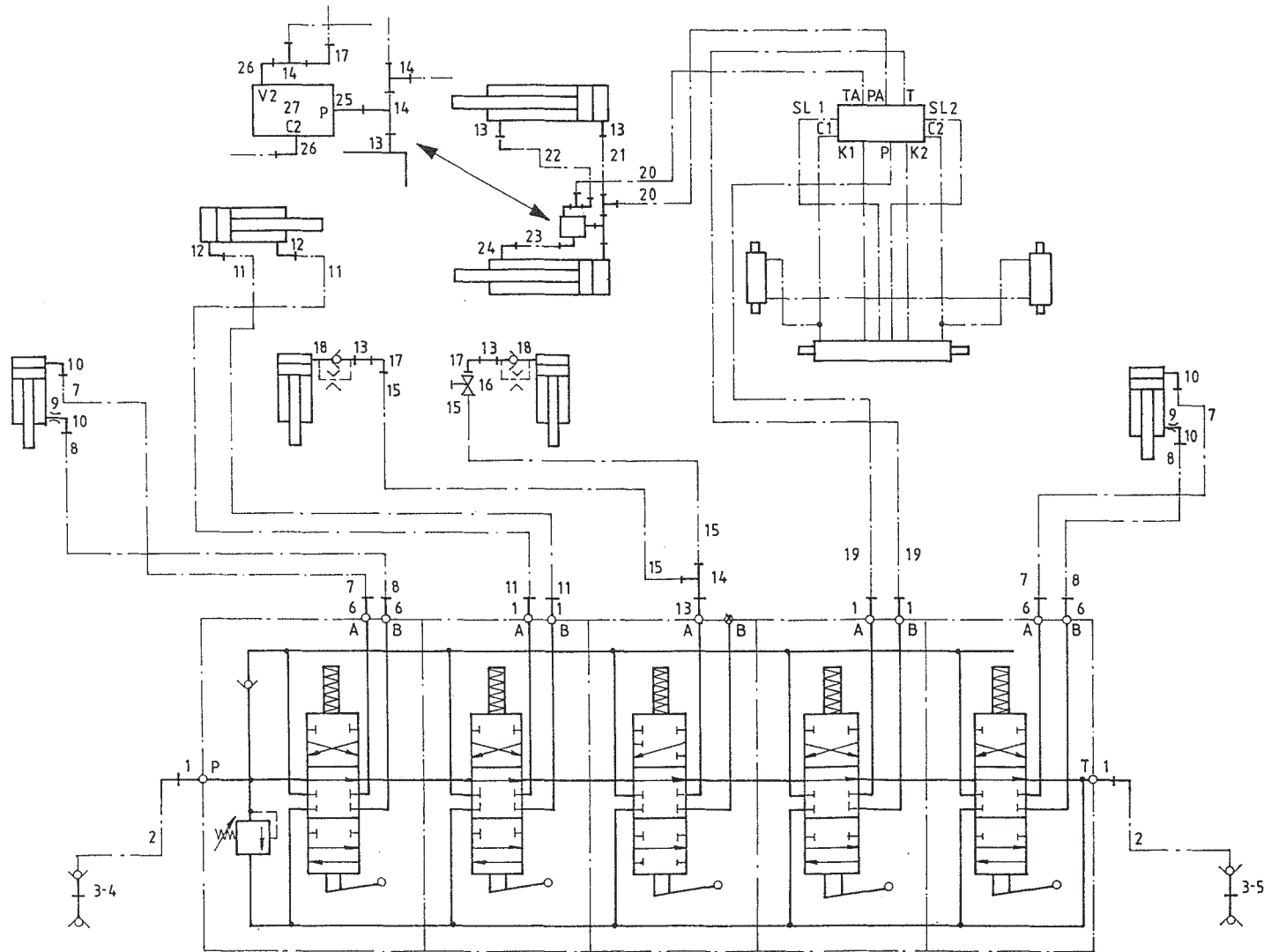
1	X50102	6	
2	W50643	2	½" 2500 RH
3	53301	2	
4	53303	1	Rood
5	53326	1	Blauw
6	X50114	4	
7	W50744	2	¼" 2250 RR
8	W50854	2	¼" 2700 RR
9	30726	2	Ø 0,8
10	X50107	4	
11	W50687	2	¾" 3000 RR
12	X50123	2	
13	50113	3	
14	X50309	4	
15	W50947	2	¾" 3600 RR
16	51045	1	
17	50122	3	
18	53202	2	
19	W50765	2	½" 4300 RR
20	W52676	2	½" 2250 RR
21	W52662	1	¾" 400 RR
22	W52664	1	¾" 900 RH
23	52665	1	L=413
24	50103	1	
25	X50288	1	
26	50105	1	
27	53459	1	

92193/1

Afbeelding 21 : Slangenschema mechanische bediening

Abbildung 21 : Schaltplan mechanische. Fernbedienung

Picture 21 : Hose-scheme mechanical remote control



bestelnummer

ordernummer

Num. à commander

Bestellnummer

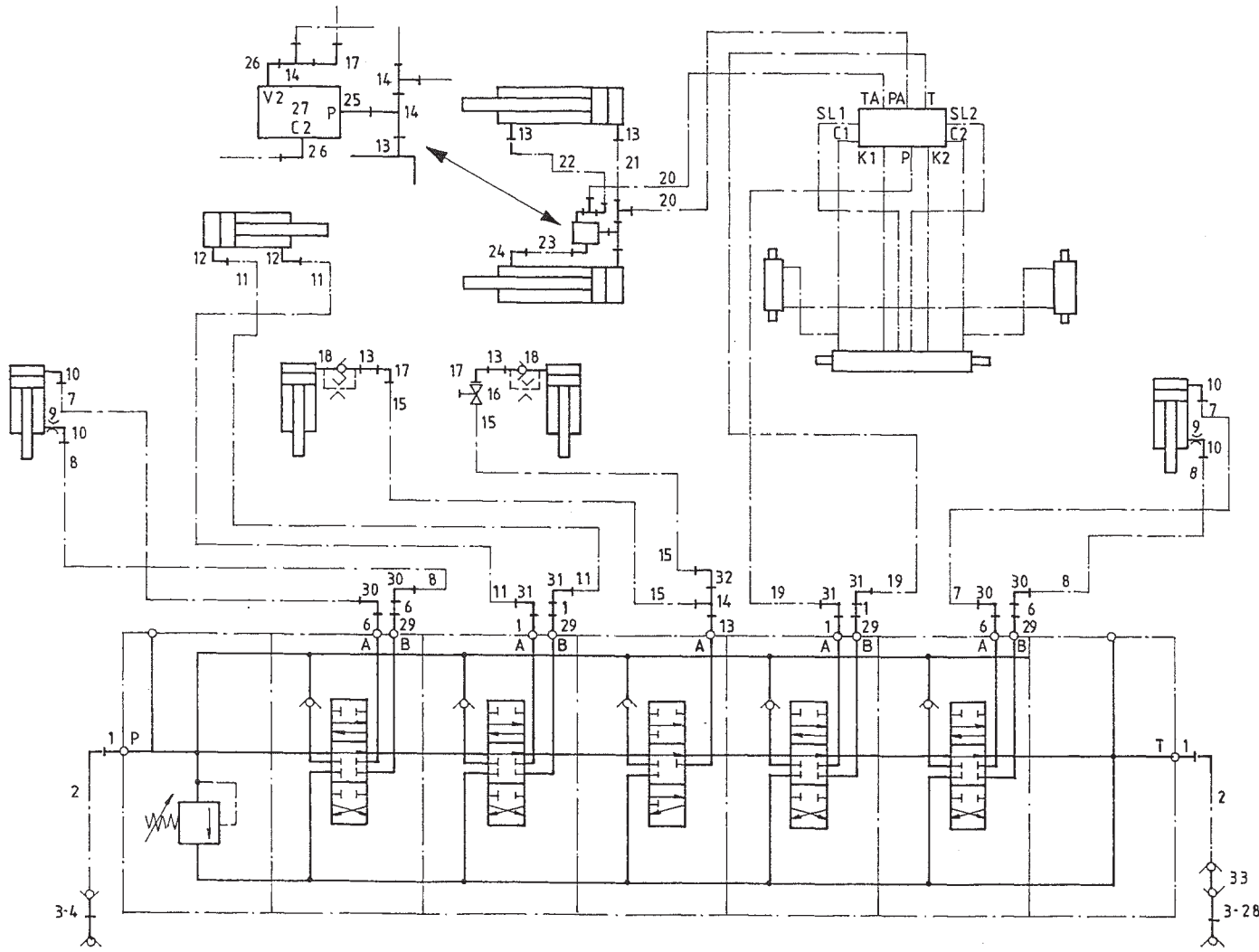
1	X50102	6
2	W50643	2 ½" 2500 RH
3	53301	2
4	53303	1 Rood
5	53326	1 Blauw
6	X50114	4
7	W50744	2 ¼" 2250 RR
8	W50854	2 ¼" 2700 RR
9	30726	2 Ø 0,8
10	X50107	4
11	W50687	2 ⅜" 3000 RR
12	X50123	2
13	50113	3
14	X50309	4
15	W50947	2 ⅜" 3000 RR
16	51045	1
17	50122	3
18	53202	2
19	W50765	2 ½" 4300 RR
20	W52676	2 ½" 2250 RR
21	W52662	1 ⅜" 400 RR
22	W52664	1 ⅜" 900 RH
23	52665	1 L=413
24	50103	1
25	X50288	1
26	50105	1
27	53459	1

92193/1

Afbeelding 22 : Slangenschema elektrische bediening

Abbildung 22 : Schaltplan elektrische Fernbedienung

Picturre 22 : Hose-scheme electrical remote control



bestelnummer

ordernummer

Num. à commander

Bestellnummer

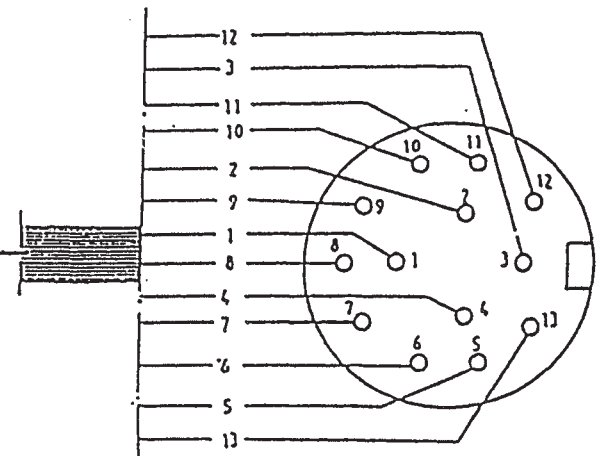
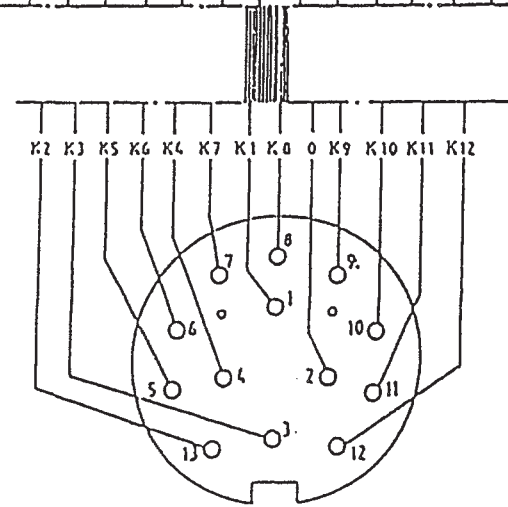
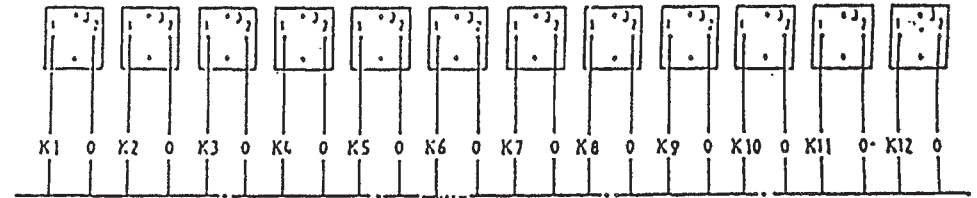
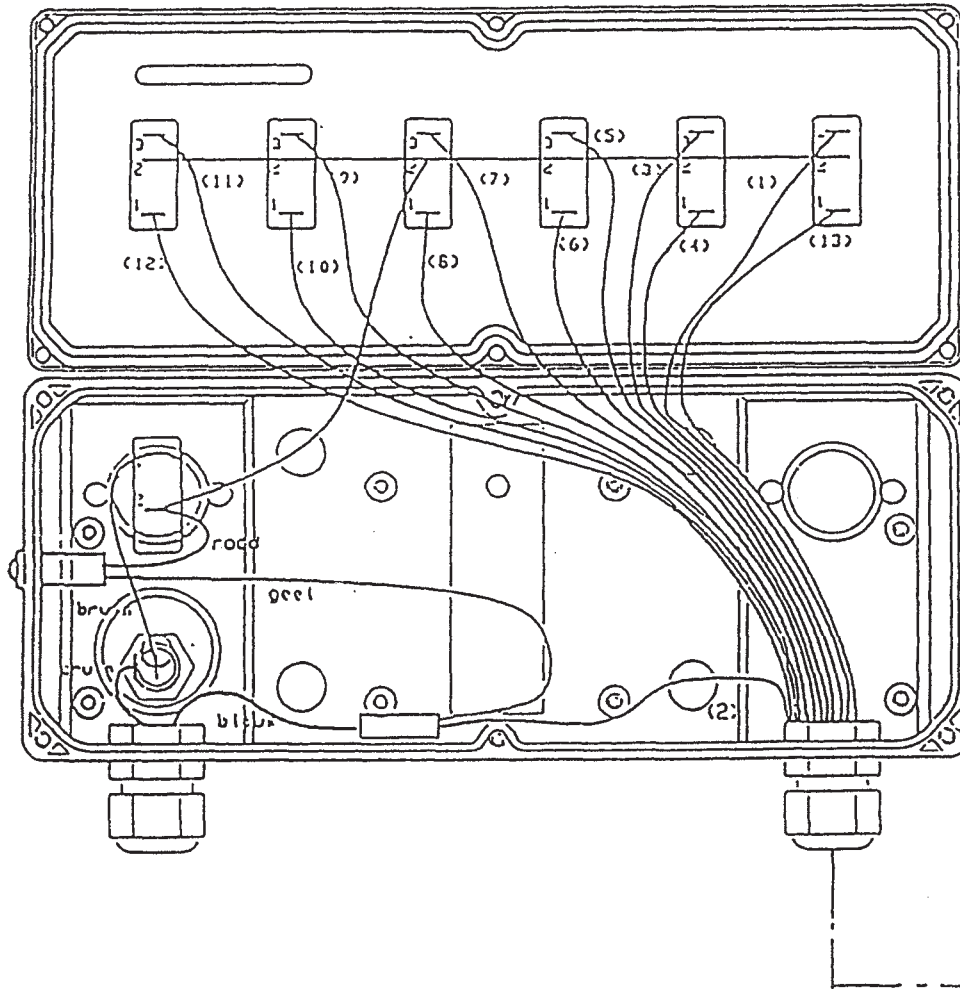
1	X50102	6
2	W50643	2 ½" 2500 RH
3	53301	2
4	53303	1 Rood
5	53326	1 Blauw
6	X50114	4
7	W50744	2 ¼" 2250 RR
8	W50854	2 ¼" 2700 RR
9	30726	2 Ø 0,8
10	X50107	4
11	W50687	2 ¾" 3000 RR
12	X50123	2
13	50113	3
14	X50309	4
15	W50947	2 ¾" 3000 RR
16	51045	1
17	50122	3
18	53202	2
19	W50765	2 ½" 4300 RR
20	W52676	2 ½" 2250 RR
21	W52662	1 ¾" 400 RR
22	W52664	1 ¾" 900 RH
23	52665	1 L=413
24	50103	1
25	50288	1
26	50105	1
27	53459	1
28	53309	1
29	50133	4
30	X50147	4
31	X50143	4
32	X50122	1
33	53467	1

92193/1

Afbeelding 23 : Aansluitschema bedieningskast

Abbildung 23 : Schaltplan Bedienungskasten

Picturre 23 : Scheme electrical controlbox



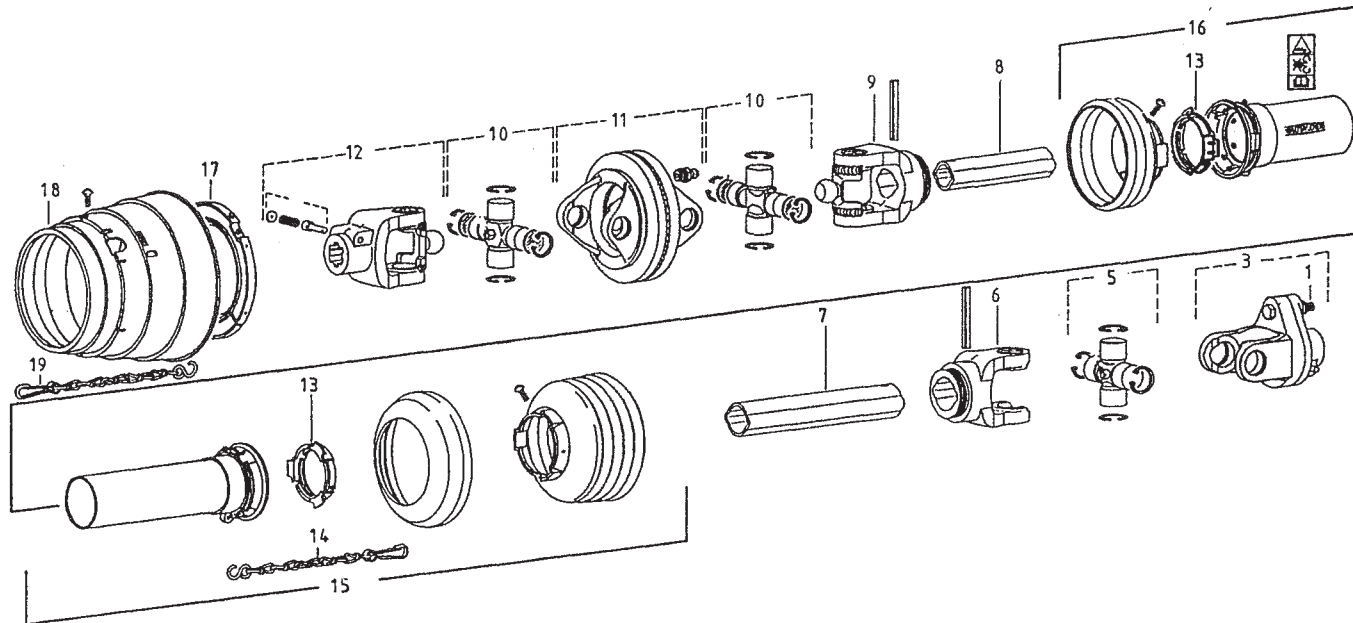


92193/1

Afbeelding 24 : Aftakas

Abbildung 24 : Gelenkwelle

Picturre 24 : PTO shaft



bestelnummer

ordernummer

Num. à commander

Bestellnummer

90797 WWE 2380

1	80860	1	M8 x 60 8.8
3	94098	1	
5	90615	1	
6	94081	1	
7	90816	1	
8	90818	1	
9	90625	1	
10	94057	2	
11	94083	1	
12	94082	1	
13	90619	2	
14	90266	1	
15	94058	1	
16	94059	1	
17	94060	1	
18	94061	1	
19	94062	1	



Hinmanweg 19  
7575 BE Oldenzaal - Holland  
Postbus 134  
7570 AC Oldenzaal - Holland

e-mail: [info@trioliet.nl](mailto:info@trioliet.nl)  
<http://www.trioliet.nl>

Tel.: 0541 - 57 21 21 / (+) 31 - 541 - 57 21 21  
Fax: 0541 - 57 21 25 / (+) 31 - 541 - 57 21 25

Voor onderdelen / Für Ersatzteile / For spare parts / pour pièces de rechange

Tel.: 0541 - 57 21 36 / (+) 31 - 541 - 57 21 36  
Fax: 0541 - 57 21 40 / (+) 31 - 541 - 57 21 40