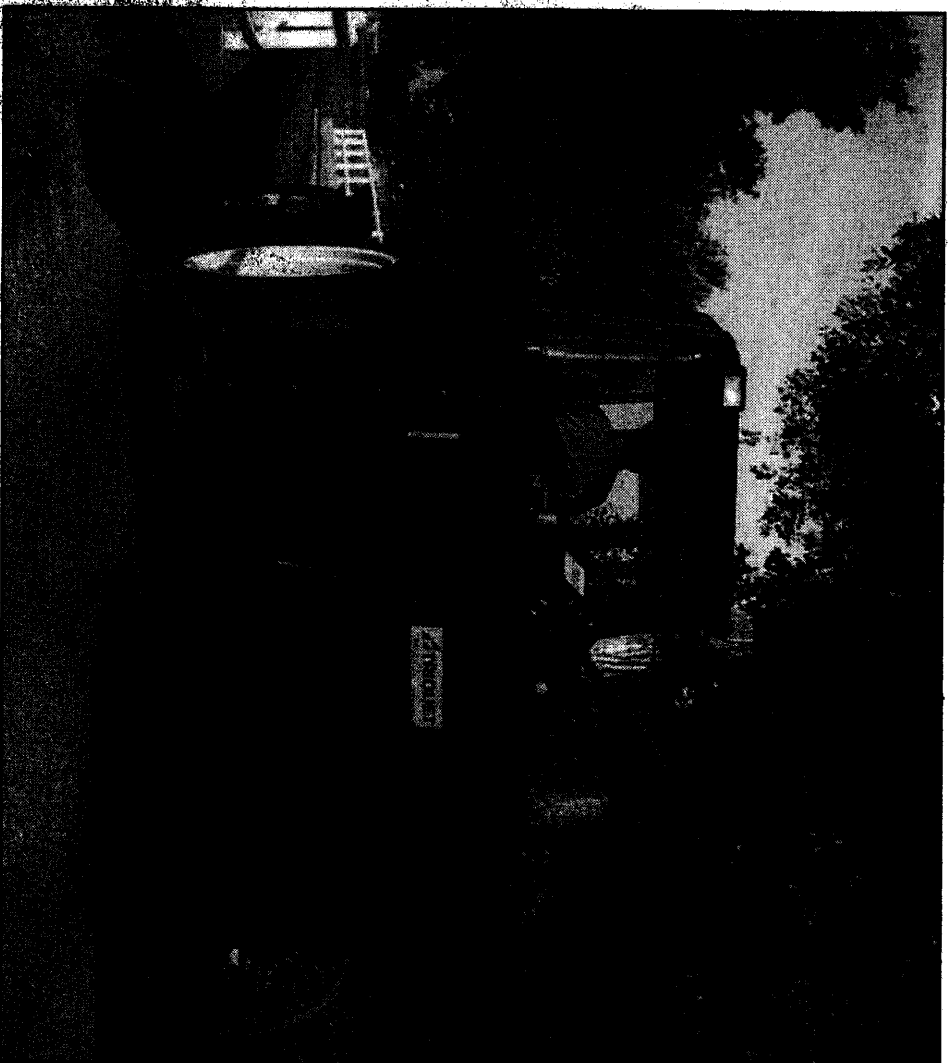


**TRIOLIET**

*Triolet*

*Uitkildoseermengbak*

*Silobuster*



*Onderdelen- en Werkplaatshandboek  
Ersatzteilliste und Werkstatthandbuch*

*Bestelnummer / Bestellnummer 92102*

*Geldig vanaf productieserie nr. / Gültig ab Prod. Series No.: 08*

Stickers	1
Aufkleber	
Decals	
Autocollants	
Doseerbak middenframe	2
Mittelrahmen	
Middle frame	
Bati central	
Doseerkast rechts lossend	3
Rechter Verteileinrichtung	
RH Distribution	
Bloque de distribution à droite	
Doseerbak links lossend	4
Linker Verteileinrichtung	
LH Distribution	
Bloque de distribution à gauche	
Doseerkasten dubbelzijdig lossend	5
Beidseitiger Verteileinrichtung	
Double sided distribution	
Bloques à double déméleurs	
Telescooparm	6
Teleskoparm	
Telescopic tube	
Bras télescopique	
Snijbord	7
Schneidschild	
Cutting board	
Cadre de Coupe	
Krabbord en Krabarm	8
Silokam und Gelenkarm	
Rake and Supportarm	
Pelle et Bras	
Mechanische afstandsbediening	9
Mechanische Fernbedienung	
Mechanical remote control	
Télécommande mécanique	
Handventielen	10
Handsteuerventile	
Manual control	
Commande manual	
Elektrische afstandsbediening	11
Elektrische Fernbedienung	
Electrical remote control	
Télécommande électrique	
Bedieningskast en aansluiteschema	12
Bedienungsput und Schaltplan	
Control box and wiring	
Boitier et plan de connection	
Stuurblok uitwendig	13
Steuerblock außenseite	
Steeringblock exterior	
Bloque de direction extérieure	

Inhoudsopgave / Inhalt Contents / Contenu	Afb. / Abb. Pict. / Fig.
Stuurblok inwendig	14
Steuerblock innenseite	
Steeringblock	
Bloque de direction intérieure	
Achter- en zijmescilinder	15
Heck- und Seitenmescylinder	
Rear and side knifecylinders	
Vérin pour scie arrière et lateral	
Cilinders teleskoop	16
Zylinder Teleskop	
Cylinders telescopic arm	
Vérins de bras télescopique	
Cilinders krabarm	17
Zylinder Silokam	
Cylinders rake system	
Vérins de pelle Silokam	
Cilinder Doseertklep	18
Zylinder Dostierklappe	
Cylinders Sidedoor	
Verin de Volet	
Leidingschema rechts lossend Silobuster	19
Hydraulik-Plan Verteilung rechts Silobuster	
Hydraulic scheme for RH distribution Silobuster	
Circuit hydraulique pour déméleur droite Silobuster	
Leidingschema links lossend Silobuster	20
Hydraulik-Plan Verteilung links Silobuster	
Hydraulic scheme for LH distribution Silobuster	
Circuit hydraulique pour simple déméleur à gauche Silobuster	
Leidingschema dubbelzijdig lossend Silobuster	21
Hydraulik-Plan beidseitige Verteilung Silobuster	
Hydraulic scheme for double distribution Silobuster	
Circuit hydraulique double déméleur Silobuster	
Leidingschema rechts lossend Silokam	22
Hydraulik-Plan Verteilung rechts Silokam	
Hydraulic scheme for RH distribution Silokam	
Circuit hydraulique pour déméleur droite Silokam	
Leidingschema links lossend Silokam	23
Hydraulik-Plan Verteilung links Silokam	
Hydraulic scheme for LH distribution Silokam	
Circuit hydraulique pour simple déméleur à gauche Silokam	
Leidingschema dubbelzijdig lossend Silokam	24
Hydraulik-Plan beidseitige Verteilung Silokam	
Hydraulic scheme for double distribution Silokam	
Circuit hydraulique double déméleur Silokam	
Elektrisch schema	25
Elektrischer Schaltplan	
Wiring diagram	
Plan de connection électrique	

**92102**

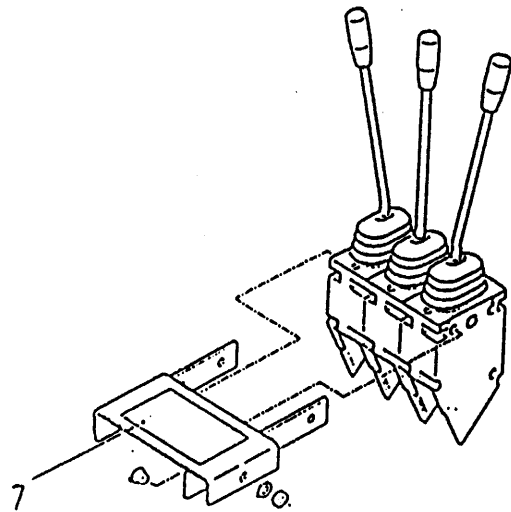
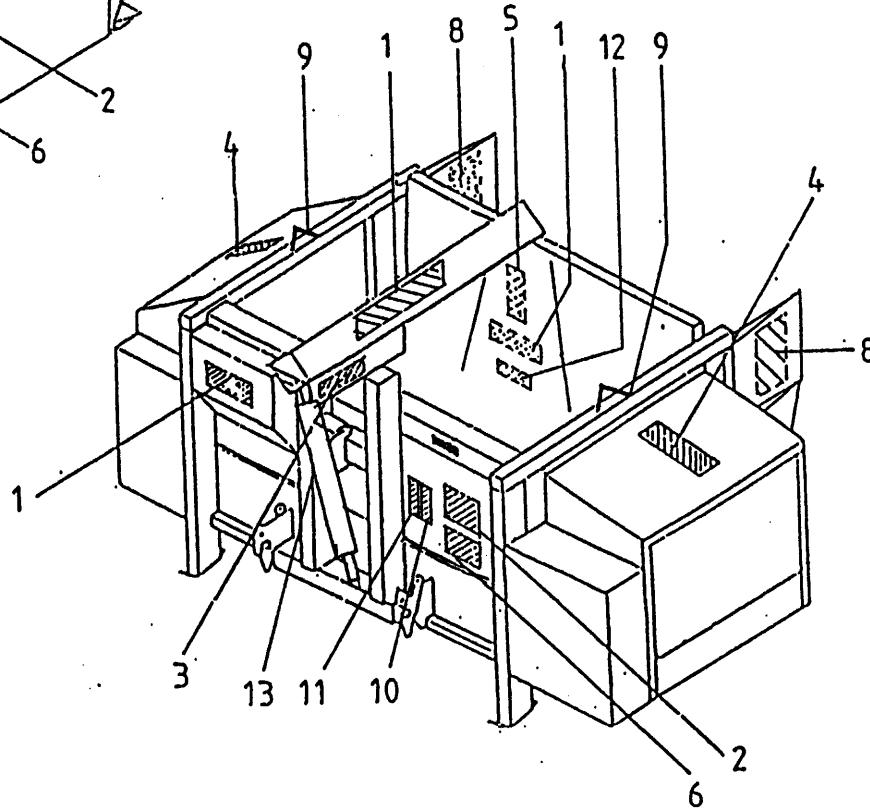
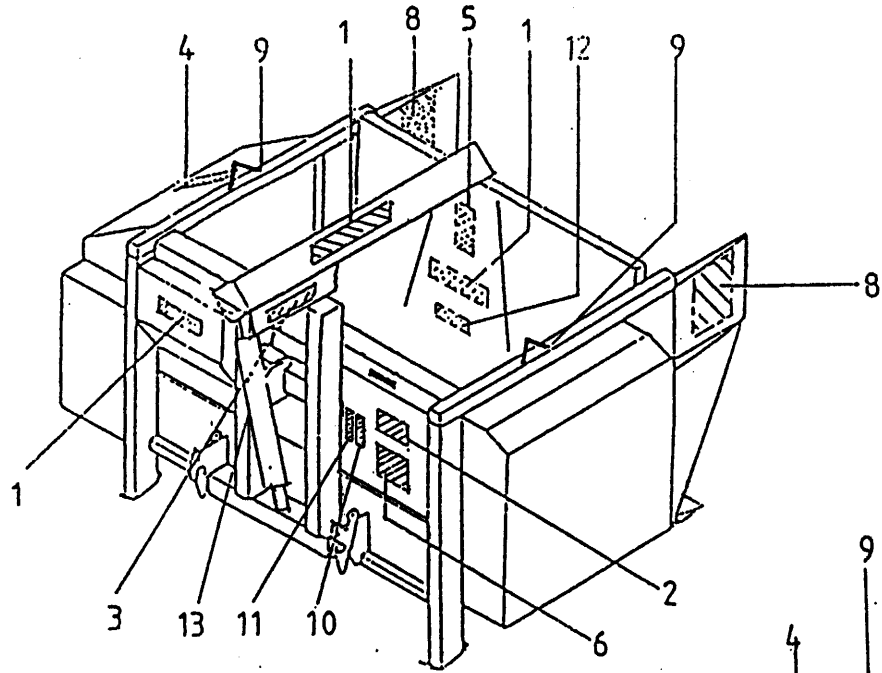
Afb. 1

Stickers

Aufkleber

Decals

Autocollants



bestelnummer  
ordernummer  
num.à commander  
Bestellnummer

1	91007	3
2	91159	1
3	91151	1
4	91152	1-2
5	91153	1
6	91160	1
7	91096	1
8	91172	2
9	91183	2
10	91188	1
11	91185	1
12	91189	1
13	91182	1

92102

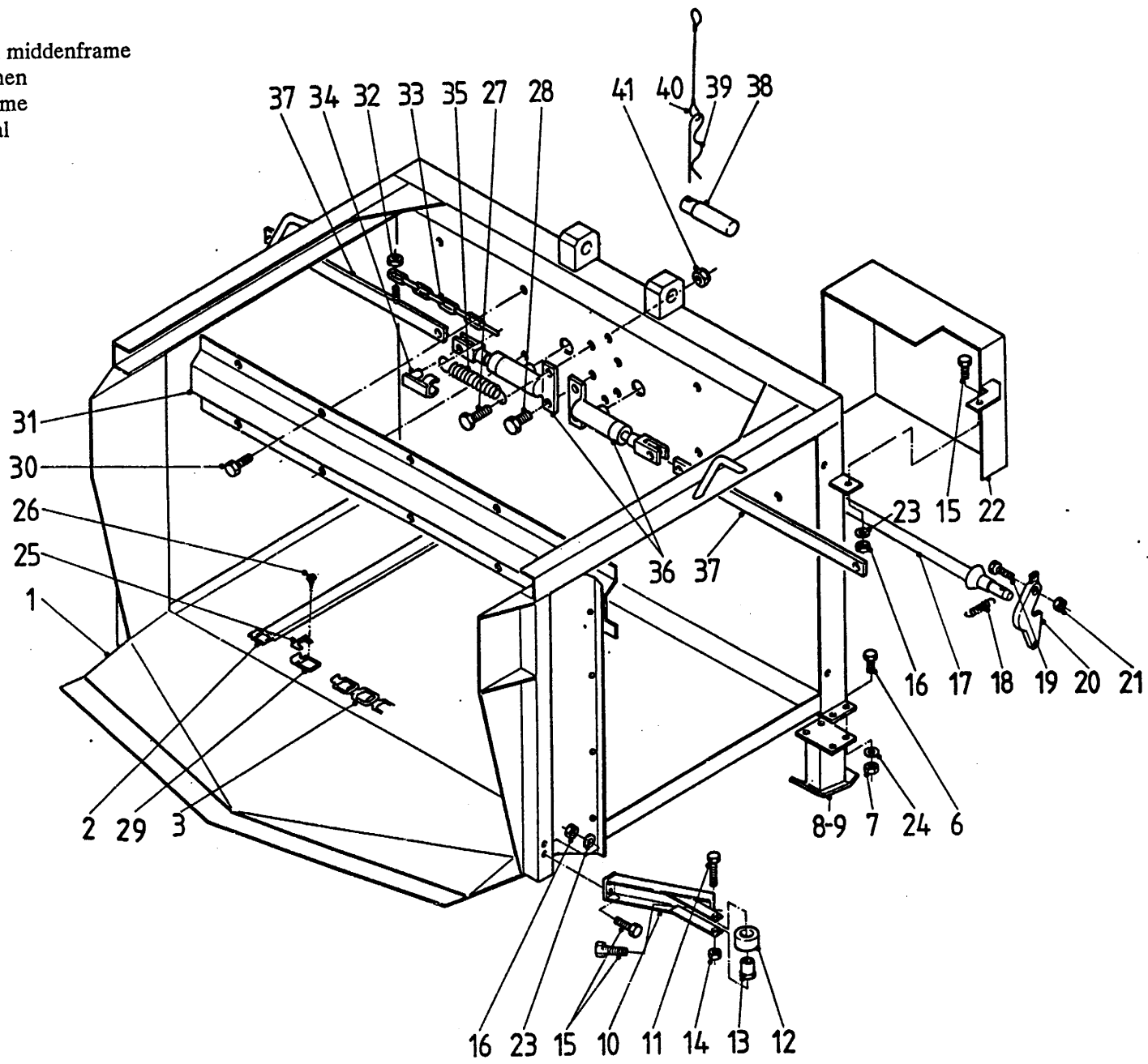
Afb. 2

Doseerbak middenframe

Mittelrahmen

Middle frame

Bati central

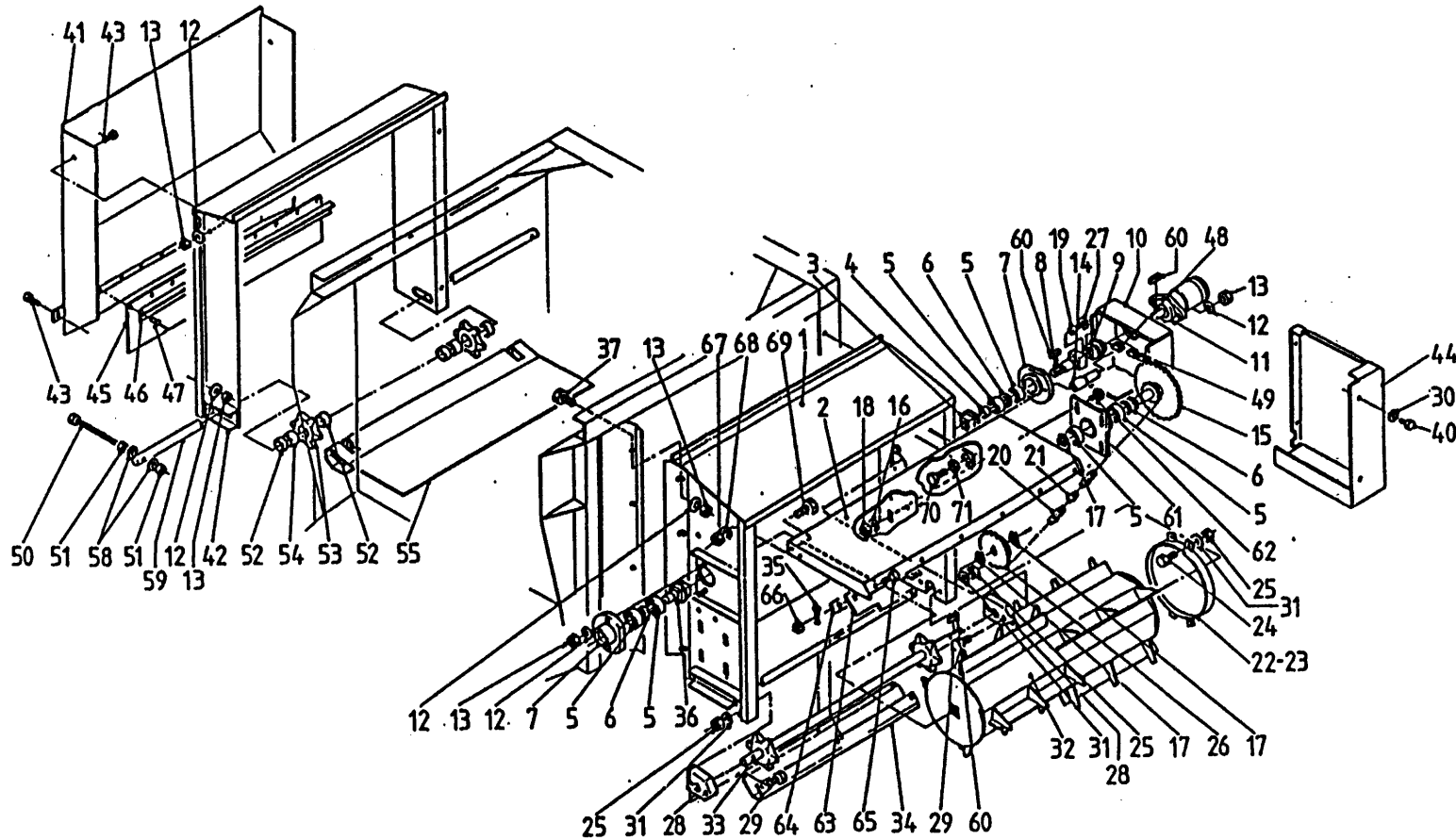


bestelnummer	ordernummer	num.à commander	Bestellnummer
1	10871	1	
2	10883		
3	39010		
6	81030	8	M 10 x 30
7	86210	8	M 8
8	10872	1	R
9	10873	1	L
10	10884	1	
11	81280	1	M 12 x 80
12	60164	1	
13	30774	1	
14	86212	1	M 12
15	80826	4	M 8 x 25
16	86208	3	M 8
17	10012	1	
18	65005	2	
19	81646	2	M 16 x 45
20	10392	2	
21	86216	2	M 16
22	22056	1	
23	85108	3	M 8
24	85110	8	M 10
25	39069	2	
26	84709	4	
27	81041		M 10 x 40
28	81020		M 10 x 20
29	39069	2	
30	84705	9	
31	11320	1	
32	86206		M 6
33	39097		
34	31169		
35	65021		
36	51021		
37	11319		
38	30751	1	
39	65004	1	
40	90282	2	
41	86210	2	M 10

92102

Afb. 3

Doseerkast rechts lossend  
 Rechter Verteilinrichtung  
 RH Distribution  
 Bloque distribution à droite

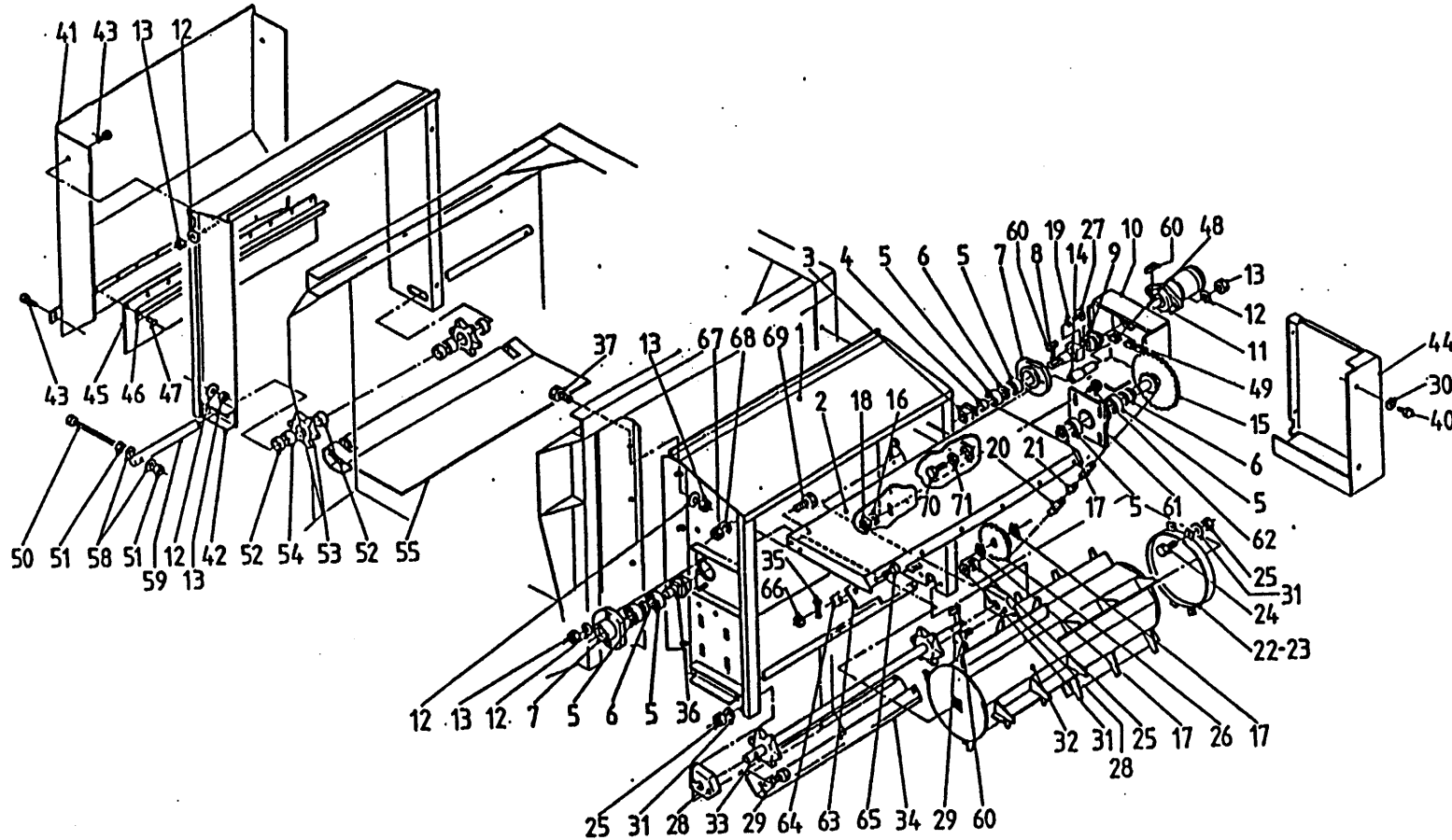


bestelnummer	ordernummer	num.à commander	Bestellnummer
1	10876	1	
2	11314	1	
3	10795	1	
4	22661	1	
5	70037	6	
6	85332	4	
7	11040	2	
8	10923	1	
9	10926	1	
10	10885	1	
11	50046	1	
12	85112	20	M 12
13	86212	20	M 12
14	30897	2	
15	10892	1	
16	85227	4	
17	87030	3	
18	86112	4	
19	84805	1	
20	39054	1	
21	39056	1	
22	10881	1	
23	10882	1	
24	84802	8	
25	86210	8	M 10
26	39044	1	
27	85108	1	
28	60169	2	
29	81046	4	M 10 x 45
30	85008	4	M 8
31	85110	4	M 10
32	10886	1	
33	10880	1	
34	22053	1	
35	84305	6	
36	10927	1	
37	81226	12	M 12 x 25

92102

Afb. 3

Doseerkast rechts lossend  
 Rechter Verteilinrichtung  
 RH Distribution  
 Bloque distribution à droite



bestelnummer	ordernummer	num.à commander	Bestellnummer
40	80812	4	M 8 x 12
41	10878	1	
42	10877	1	
43	81231	4	M 12 x30
44	40246	1	
45	60151	1	
46	22055	1	
47	85208	10	
48	39055	1	
49	39053	1	
50	81614	2	M 16 x140
51	86116	4	M 16
52	30776	4	
53	97065	2	
54	85907	2	
55	10990	1	
58	85116	4	M 16
59	30777	1	
60	88333	2	
61	10896	1	
62	84920	4	
63	60220	1	
64	23175	1	
65	80826	6	M 8x25
66	86208	6	M 8
67	86110	2	M 10
68	85110	2	M 10
69	81045	2	M 10x45
70	81226	1	M 12x25
71	31162	1	

92102

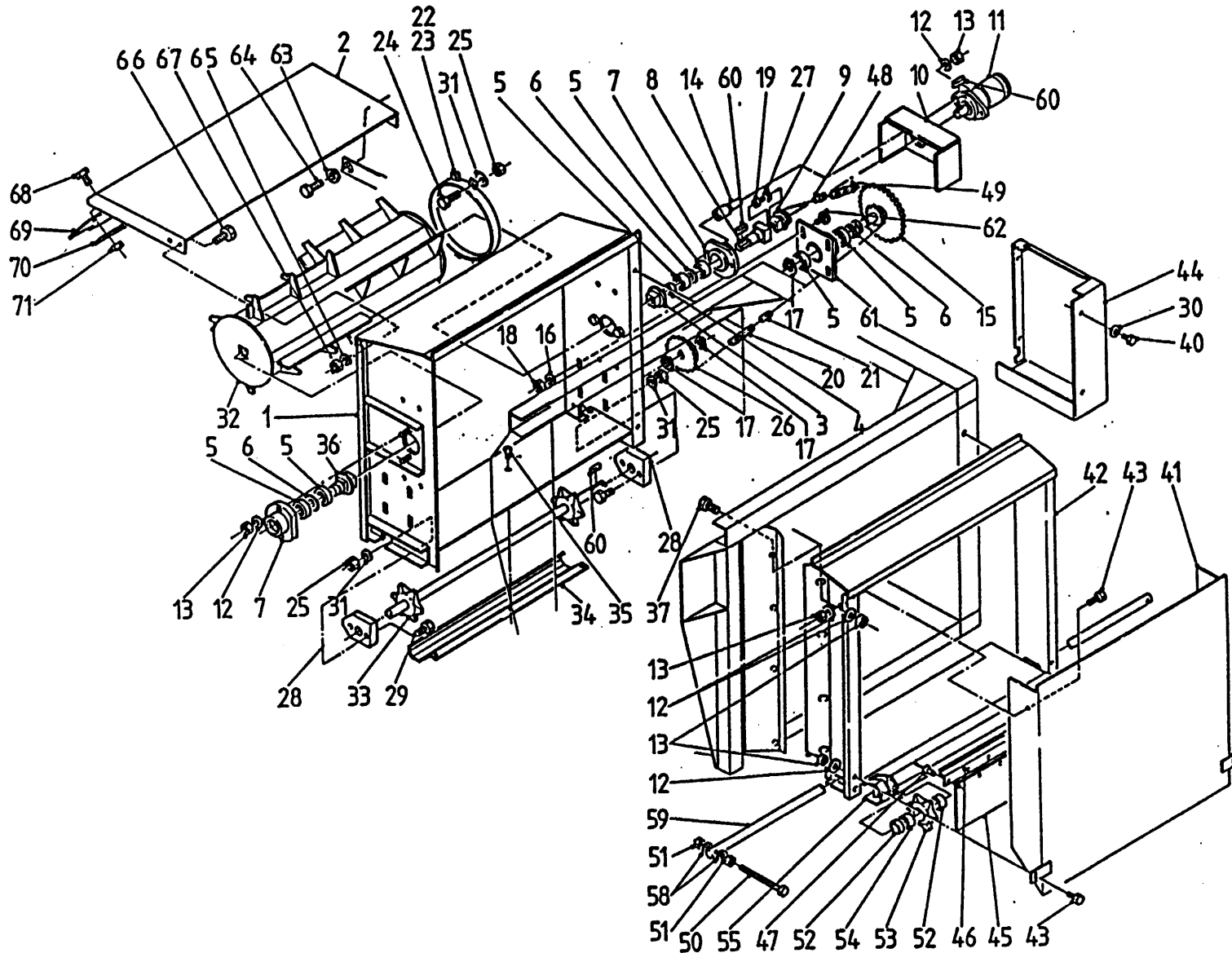
Afb. 4

Doseerbak links lossend

Linker Verteilrichtung

LH Distribution

Bloque de distribution à gauche



bestelnummer  
ordernummer  
num.à commander  
Bestellnummer

1	11234		
2	11314	1	
3	10795	1	
4	22661	1	
5	70037	6	
6	85332	4	
7	11040	2	
8	10923	1	
9	10926	1	
10	10885	1	
11	50046	1	
12	85112	20	M 12
13	86212	20	M 12
14	30897	2	
15	10892	1	
16	85227	4	
17	87030	3	
18	86112	4	
19	84805	1	
20	39054	1	
21	39056	1	
22	10881	1	
23	10882	1	
24	84802	8	
25	86210	8	M 10
26	39044	1	
27	85108	1	
28	60169	2	
29	81046	4	M 10 x 45
30	85008	4	M 8
31	85110	4	M 10
32	10886	1	
33	10880	1	
34	22053	1	
35	84305	6	
36	10927	1	
37	81226	12	M 12 x 25



92102

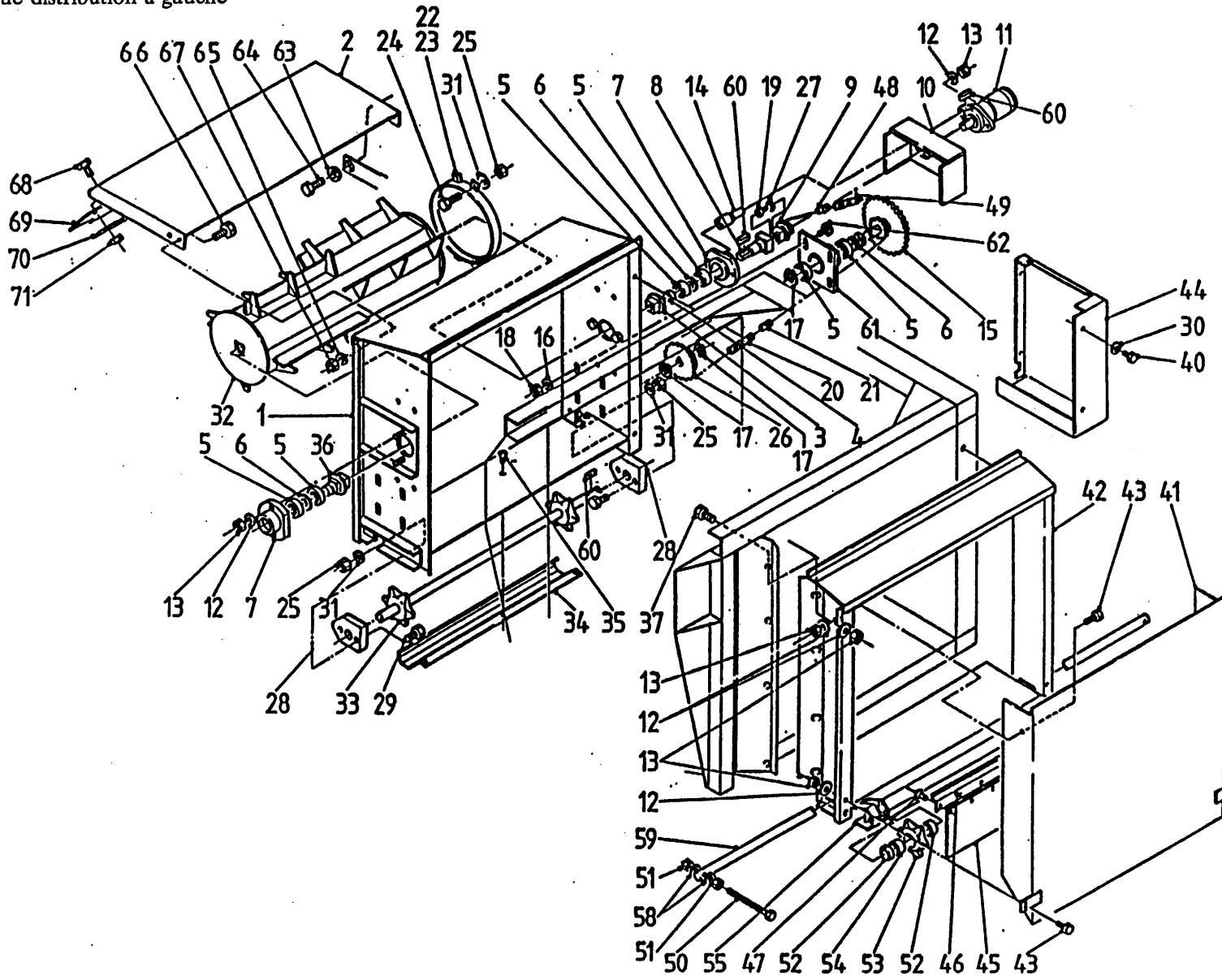
Afb. 4

Doseerbak links lossend

Linker Verteilinrichtung

LH Distribution

Bloque distribution à gauche



bestellnummer	ordernummer	num.à commander	Bestellnummer
40	80812	4	M 8 x 12
41	10878	1	
42	11235	1	
43	81231	4	M 12 x 30
44	40246	1	
45	60151	1	
46	22055	1	
47	85208	10	
48	39055	1	
49	39053	1	
50	81614	2	M16 x 140
51	86116	4	M 16
52	30776	4	
53	97065	2	
54	85907	2	
55	10990	1	
58	85116	4	M 16
59	30777	1	
60	88333	2	
61	10896	1	
62	84920	4	
63	31162	1	
64	81226	1	M 12 x 25
65	85110	2	M 10
66	81045	2	M 10 x 45
67	86110	2	M 10
68	80826	6	M 8 x 25
69	60220	1	
70	23175	1	
71	86208	6	M 8

92102

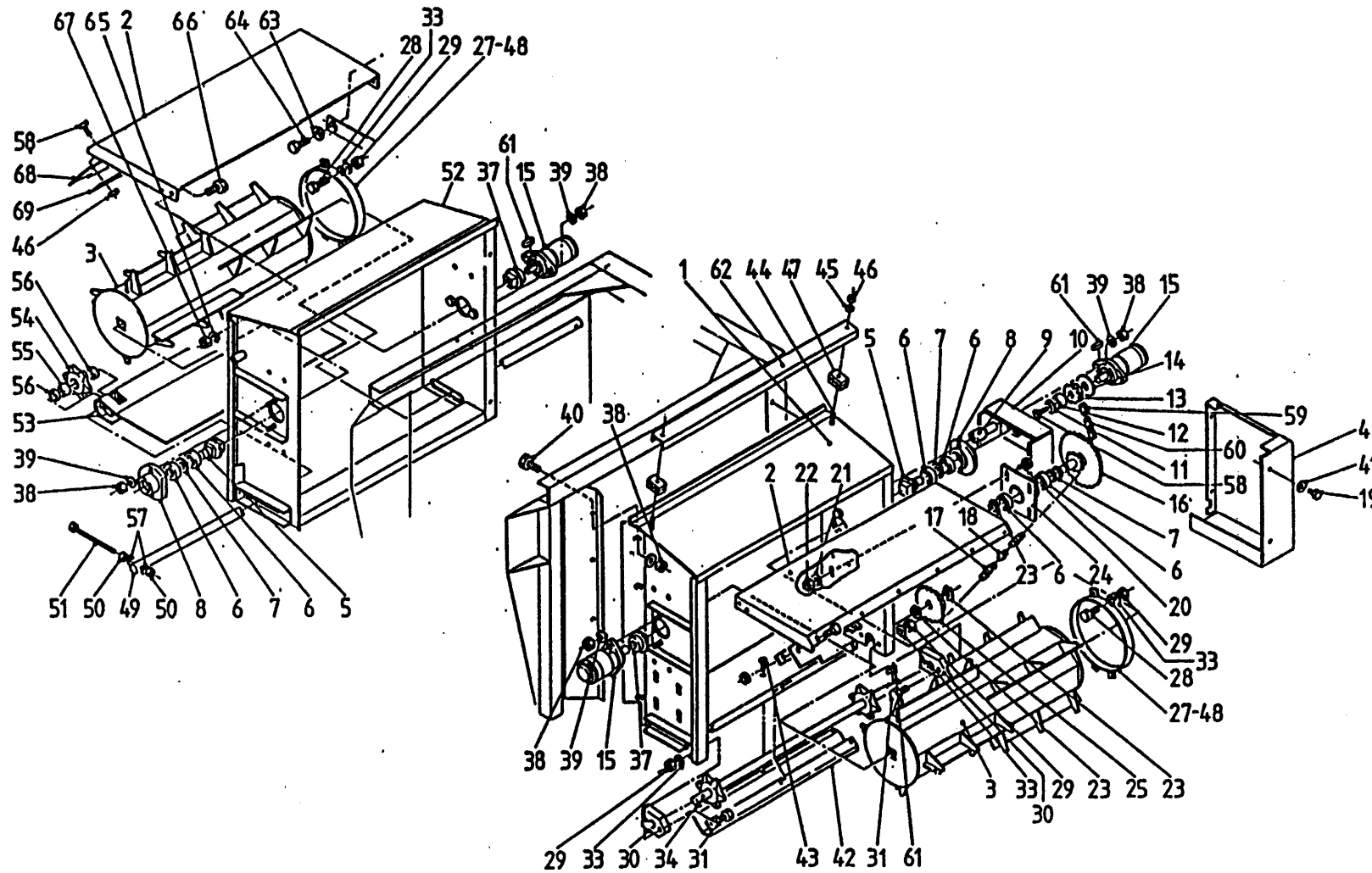
Afb. 5

Doseerkasten dubbelzijdig lossend

Beidseitiger Verteileinrichtung

Double-sided distribution

Bloques à double démêleurs



bestelnummer	ordernummer	num.à commander	Bestellnummer
1	10876	1	
2	11314	2	
3	10886	2	
4	40246	1	
5	10927	2	
6	70037	6	
7	85332	4	
8	11040	2	
9	30897	2	
10	10885	1	
11	85109	1	
12	30978	1	
13	39040	1	
14	30984	1	
15	50046	3	
16	10892	1	
17	39054	1	
18	39056	1	
19	80812	4	M 8 x 12
20	84920	4	
21	85227	4	M 12
22	86112	4	M 12
23	87030	3	
24	10896	1	
25	39044	1	
27	10881	2	
28	84802	16	
29	86210	16	M 10
30	60169	2	
31	81046	4	M 10 x 45
33	85110	16	M 10
34	10880	1	
37	10795	2	
38	86212	22	M 12
39	85112	22	M 12
40	81226	12	M 12 x 25

92102

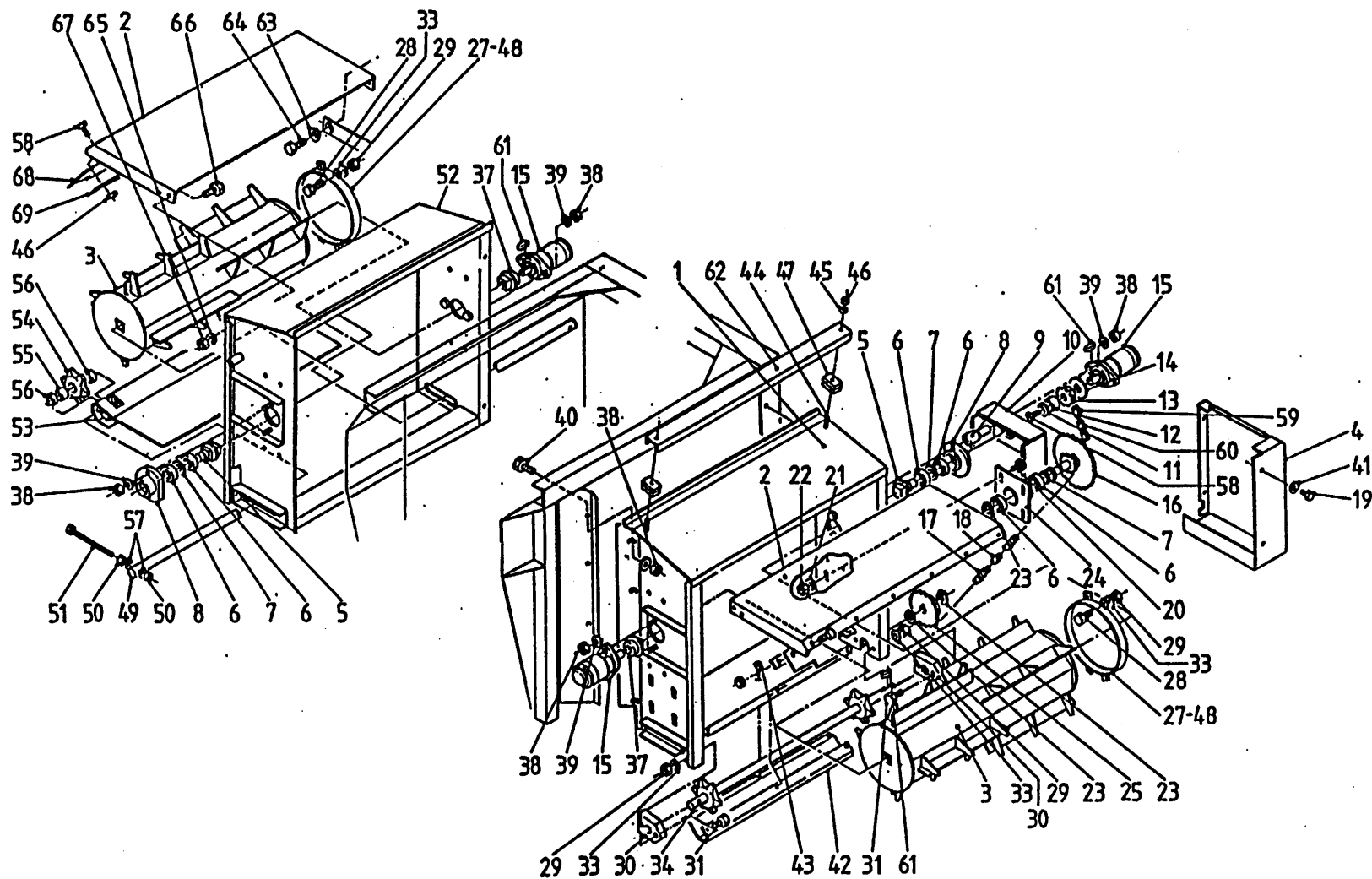
Afb. 5

Doseerkasten dubbelzijdig lossend

Beidseitiger Verteileinrichtung

Double-sided distribution

Bloques à double démêleurs



bestelnummer  
ordernummer  
num.à commander  
Bestellnummer

41	85008	4	M 8
42	22053	1	
43	84305	6	
44	80845	2	M 8 x 45
45	85108	2	M 8
46	86208	8	M 8
47	90159	2	
48	10882	2	
49	30777	1	
50	86116	4	M 16
51	10895	2	
52	10875	1	
53	10990	1	
54	97065	2	
55	85907	2	
56	30776	4	
57	85116	4	M 16
58	80826	7	M 8 x 25
59	39053	1	
60	39055	1	
61	88333	1	
62	40260	1	
63	31162	2	
64	81226	2	M 12 x 25
65	85110	8	M 10
66	81045	4	M 10 x 45
67	86110	4	M 10
68	60220	2	
69	23175	2	

92102

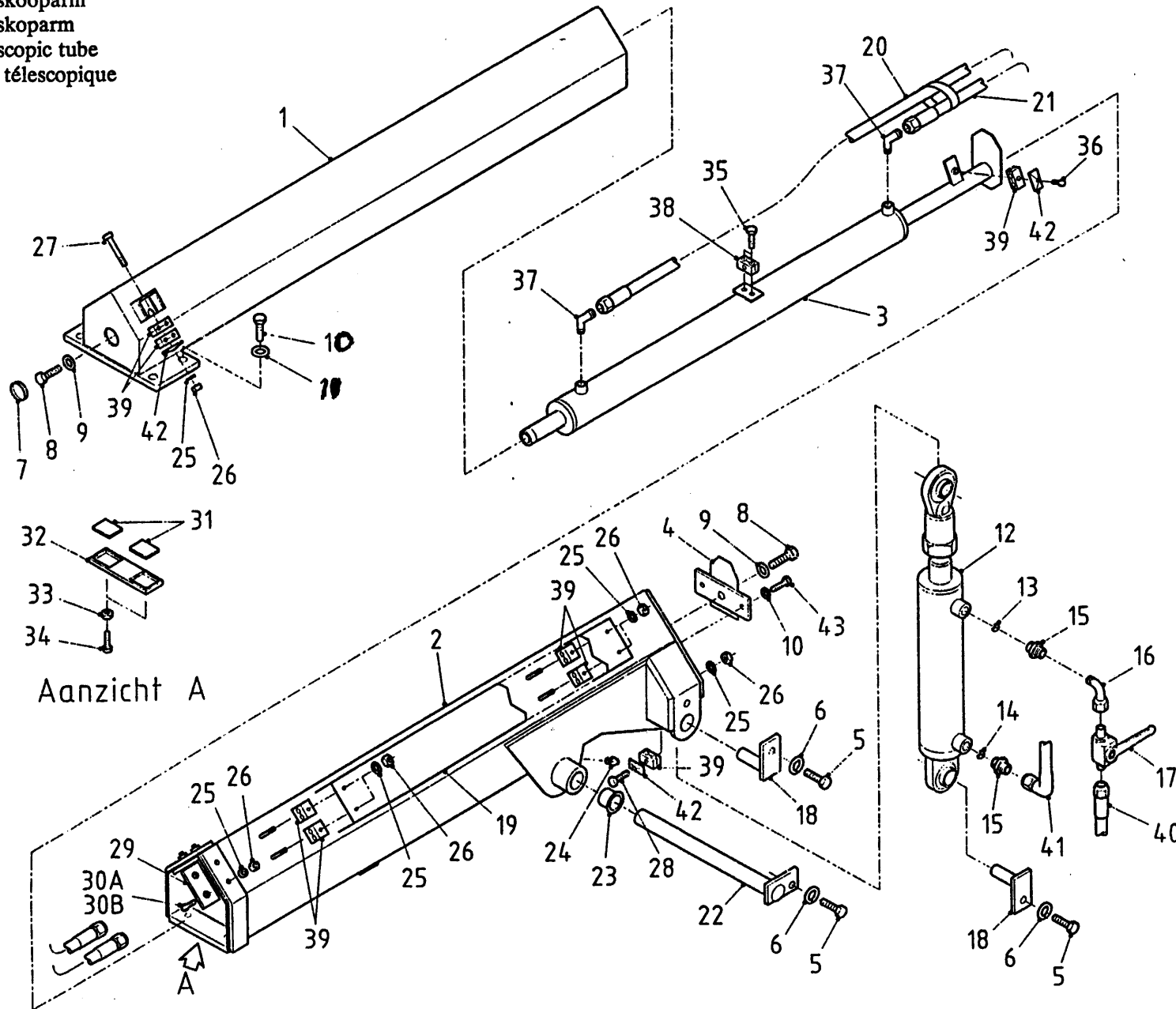
Afb. 6

Teleskooparm

Teleskoparm

Telescopic tube

Bras télescopique



Bestellnummer	ordernummer	num.à commander	Bestellnummer
1	11503	1	
2	11504	1	
3	51047	1	
4	11501	1	
5	80821	3	M 8 x 20
6	85008	3	M 8
7	60250	1	
8	82051	2	M 20 x 50
9	85020	2	M 20
10	84463	4	M 16 x 40
11	85016	6	M 16
12	51069	1	
13	53202	1	φ 1
14	53173	1	φ 2
15	X50113	2	
16	50122	1	
17	51045	1	
18	11313	2	
19	40299	1	
20	W50643	1	½" L = 2500 RH
21	W50812	1	½" L = 1650 RH
22	10798	1	
23	51751	2	
24	89505	1	
25	85108	14	M 8
26	86208	14	M 8
27	80880	1	M 8 x 80
28	84419	1	M 8 x 60
29	60248	2	
30A	80826	4	M 8 x 25
30B	80816	4	M 8 x 16
31	60145	4	
32	21888	2	
33	86116	4	M 16
34	81651	4	M 16 x 50
35	84462	1	M 6 x 25
36	80835	1	M 8 x 35
37	X50101	2	
38	90160	1	
39	90159	8	
40	W50915	1	¾" 4100 RR
41	W50658	1	¾" 4000 RH
42	90161	2	

92102

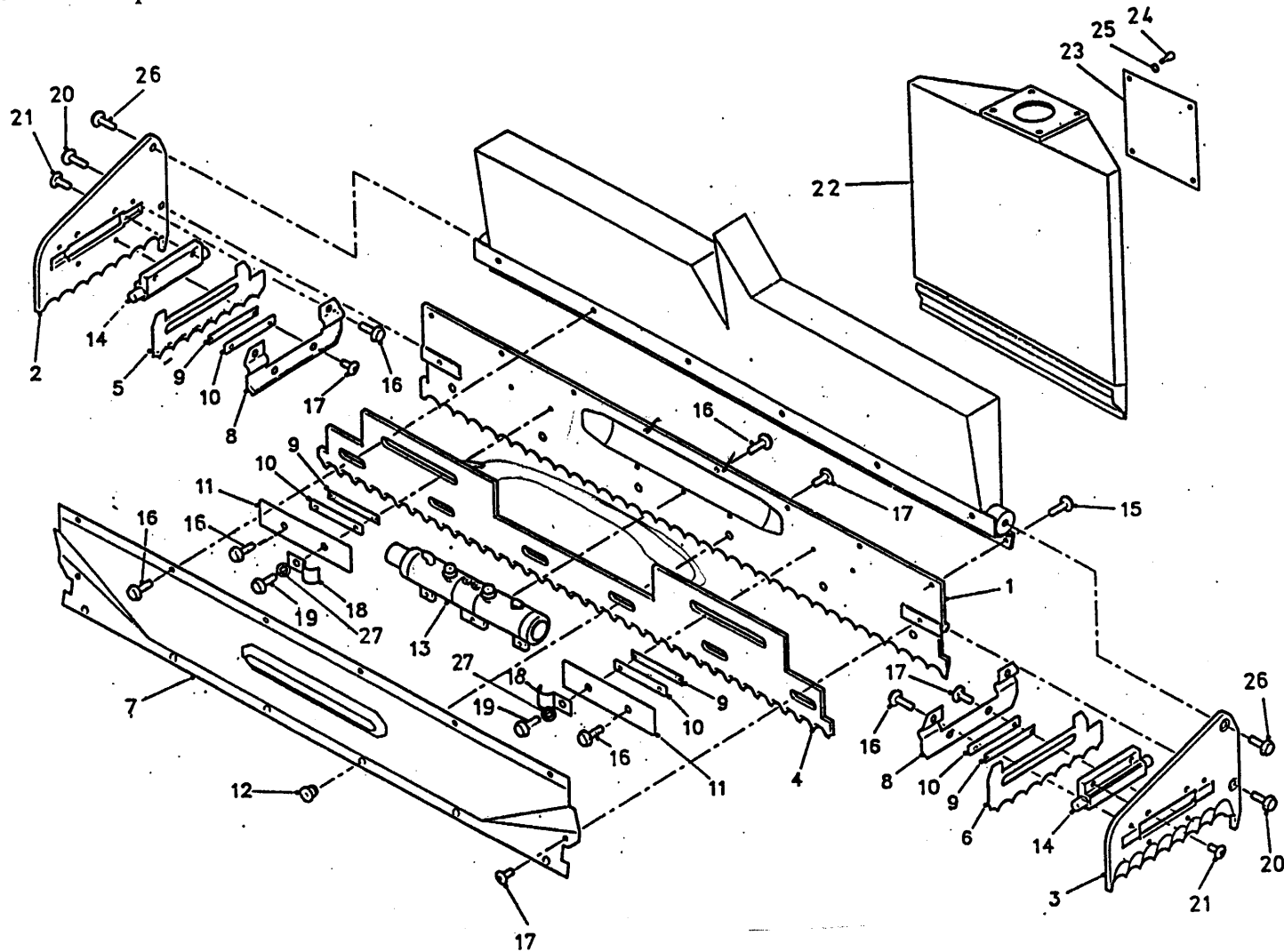
Afb. 7

Snijbord

Schneidschild

Cutting board

Cadre de coupe



bestelnummer

ordernummer

num.à commander

Bestellnummer

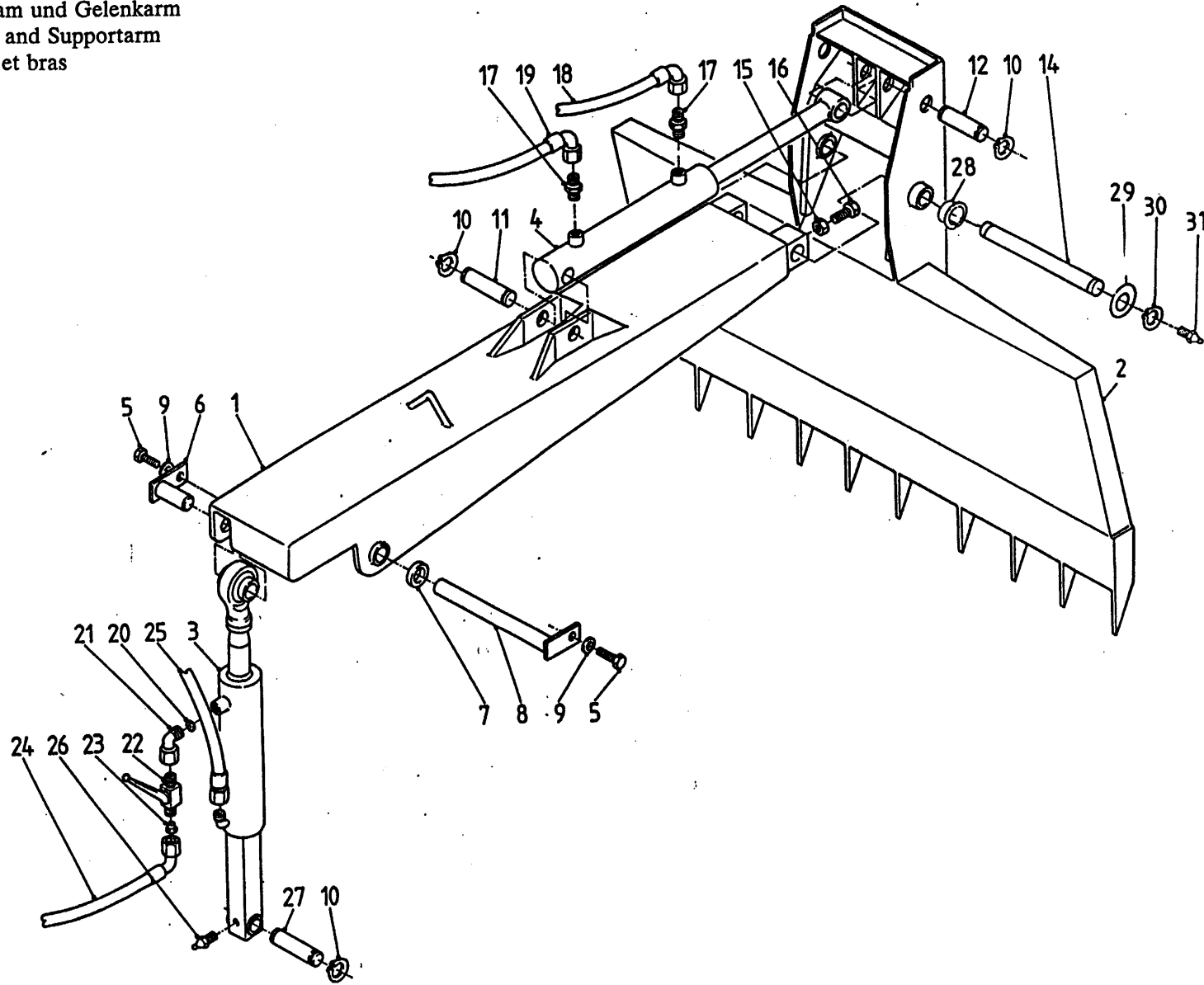
1	11508	1	
2	11588	1	Rechts
3	11587	1	Links
4	23846	1	
5	23851	1	Rechts
6	23850	1	Links
7	11596	1	
8	23853	2	
9	23863	4	
10	23854	4	
11	23848	2	
12	31327	6	
13	51061	1	
14	51057	2	
15	83923	8	M 12 x 20
16	83916	17	M 10 x 16
17	83926	10	M 10 x 19
18	24153	2	
19	81021	2	M 10 x 20
20	83937	2	M 12 x 30
21	84921	4	M 10 x 25
22	11498	1	
23	24016	1	
24	84704	12	M 8 x 16
25	85008	12	M 8
26	83931	2	M 16 x 30
27	85010	2	M 10

84926

92102

Afb. 8

Krabbord en krabarm  
 Silokam und Gelenkarm  
 Rake and Supportarm  
 Pelle et bras



bestelnummer	ordernummer	num.à commander	Bestellnummer
1	11279	1	
2	10850	1	
3	51018	1	
4	50064	1	
5	80825	3	M 8 x 25
6	11313		
7	51751	2	
8	10798	1	
9	85008	3	
10	87030	4	
11	30731	1	
12	30730	1	
14	30729	1	
15	86108	1	M 8
16	80835	1	M 8 x 35
17	X50112	2	
18	W50639	1	3/8" 2400RH
19	W50702	1	3/8" 2100RH
20	70069	1	
21	50146	1	φ 2 mm
22	51019	1	
23	30752	1	φ 1,5 mm
24	W50637	1	1/4" 1400RH
25	W50821	1	1/4" 1650RR
26	89503	3	
27	10897	1	
28	51751	4	
29	87036	2	
30	85335	2	
31	89503	2	

92102

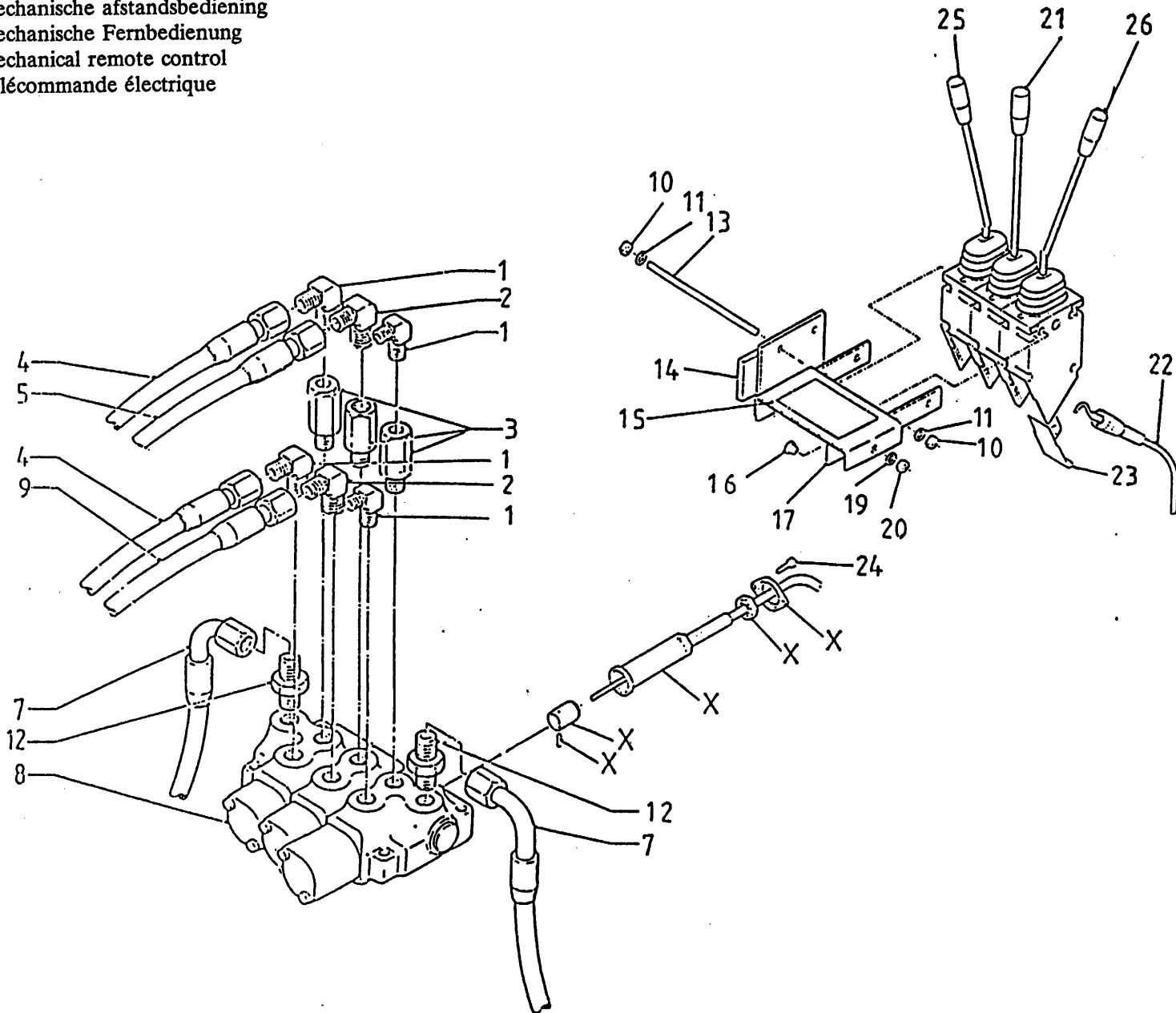
Afb. 9

Mechanische afstandsbediening

Mechanische Fernbedienung

Mechanical remote control

Télécommande électrique



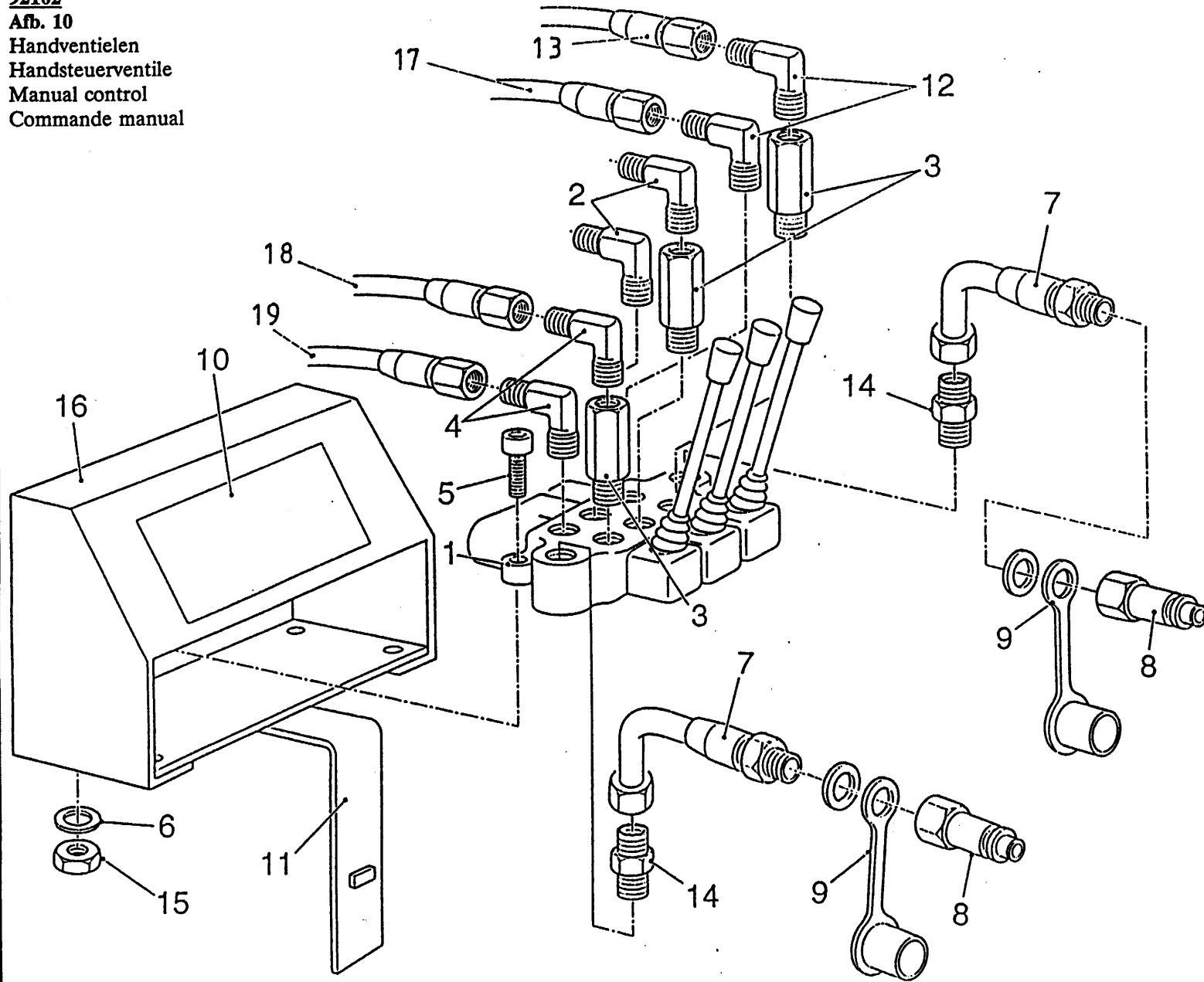
bestelnummer  
ordernummer  
num.à commander  
Bestellnummer

1	X50101	4	
2	X50103	2	
3	50133	3	
4	W50675	2	½"=4300 RR
5	W50724	1	¾"=2200 RRZ
7	W50601	2	½"=1800 RH
8	53126	1	
9	W50682	1	¾"=3000 RRZ
10	86206	6	M 6
11	85106	6	M 6
12	X50102	2	
13	84158	3	
14	11139	1	
15	22658	1	
16	80816	2	M 8 x 16
17	22244	2	
19	85108	2	M 8
20	86208	2	M 8
21	53099	1	
22	79059	3	
23	60210	3	
24	84426	6	
25	53129	1	15°L
26	53127	1	15°R

92102

Afb. 10

Handventielen  
Handsteuerventile  
Manual control  
Commande manual



bestelnummer  
ordernummer  
num.à commander  
Bestellnummer

1	53126	1
2	X50101	2
3	50133	3
4	X50103	2
5	84419	3 M 8 x 45
6	85108	3 M 8
7	W50805	2 ½" 1400 RR
8	53301	2
9	53303	2
10	91096	1
11	10099	1
12	X50118	2
13	W50637	2 ¼" 1400 RH
14	X50102	2
15	86208	3 M 8 Nyloc
16	40308	1
17	W50821	1 ¼" 1650 RR
18	W50702	1 ⅜" 2100 RH
19	W50639	1 ⅝" 2400 RH



92102

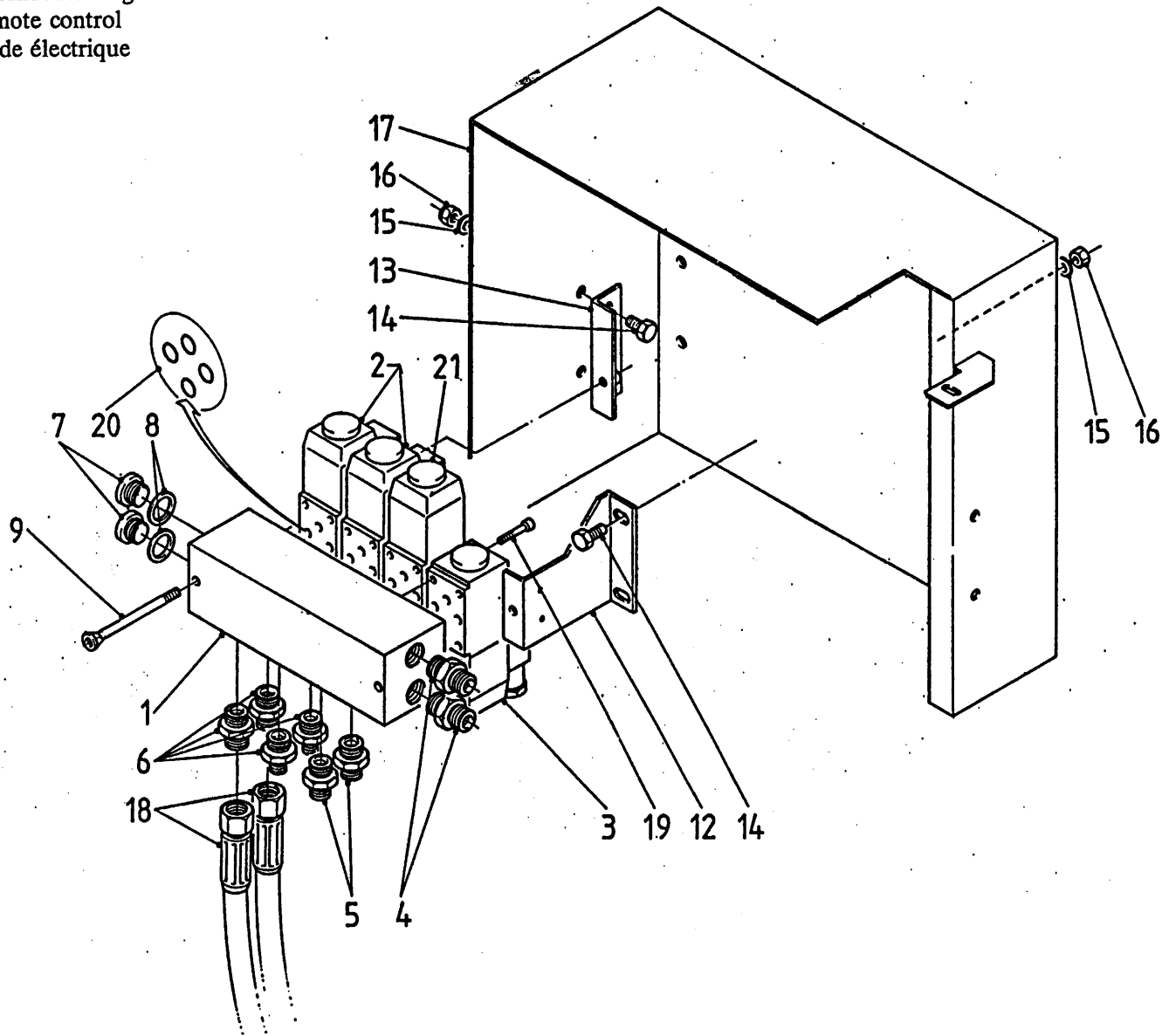
Afb. 11

Elektrische afstandsbediening

Elektrische fernbedienung

Electrical remote control

Télécommande électrique



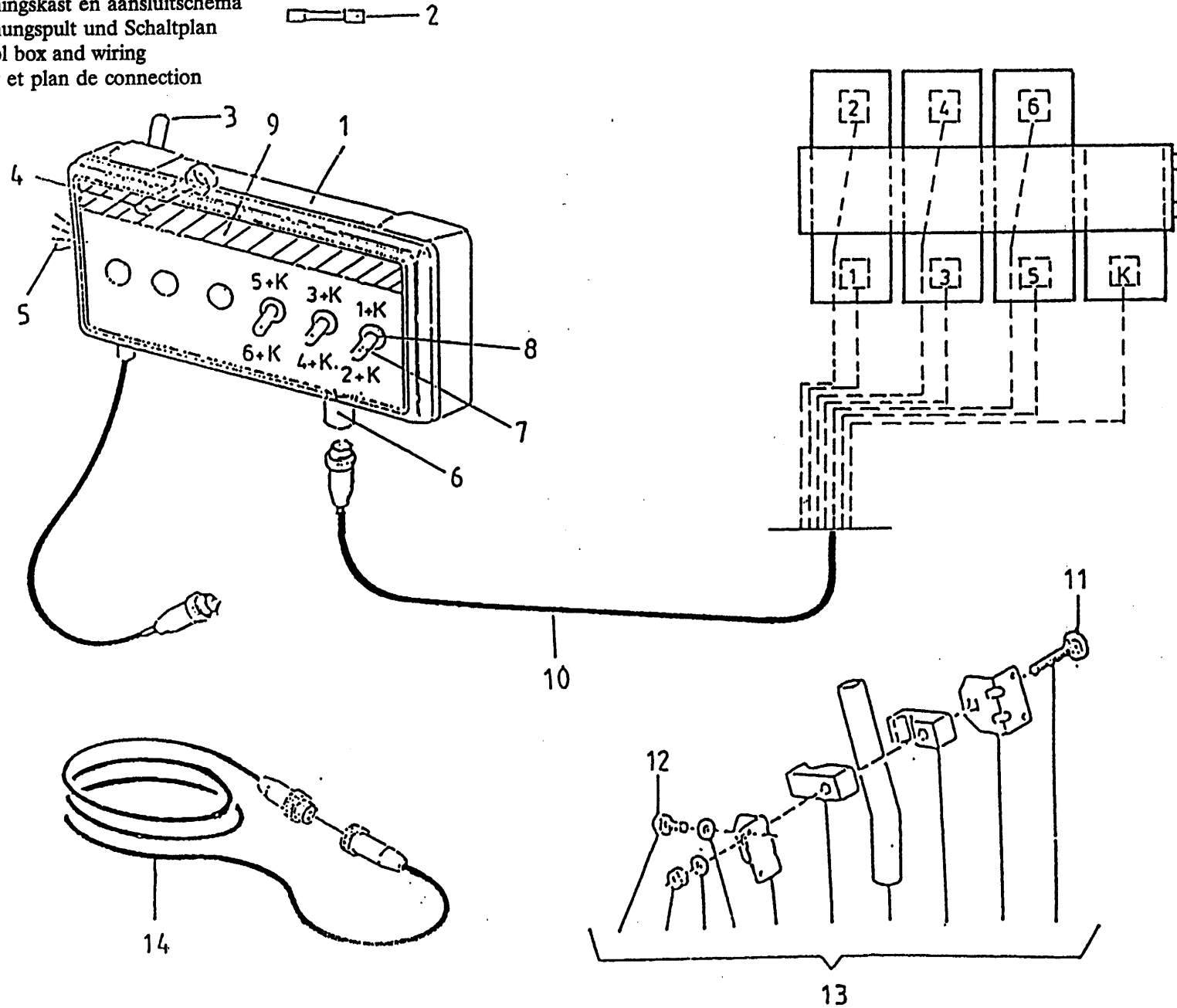
bestelnummer  
ordernummer  
num.à commander  
Bestellnummer

1	53068	1	
2	53079	2	
3	53080	1	
4	X50142	2	
5	X50113	2	
6	X50102	4	
7	53316	2	
8	85225	2	
9	84163	2	M 6 x 90
12	22052	1	
13	22054	1	
14	80821	4	M 8 x 20
15	85108	4	M 8
16	86208	4	M 8
17	22056	1	
18	W50675	2	½" 4300 RR
19	84433	16	M 5 x 30
20	78057	16	
21	53135	1	

92102

Afb. 12

Bedieningskast en aansluitschema  
Bedienungspult und Schaltplan  
Control box and wiring  
Boitier et plan de connection



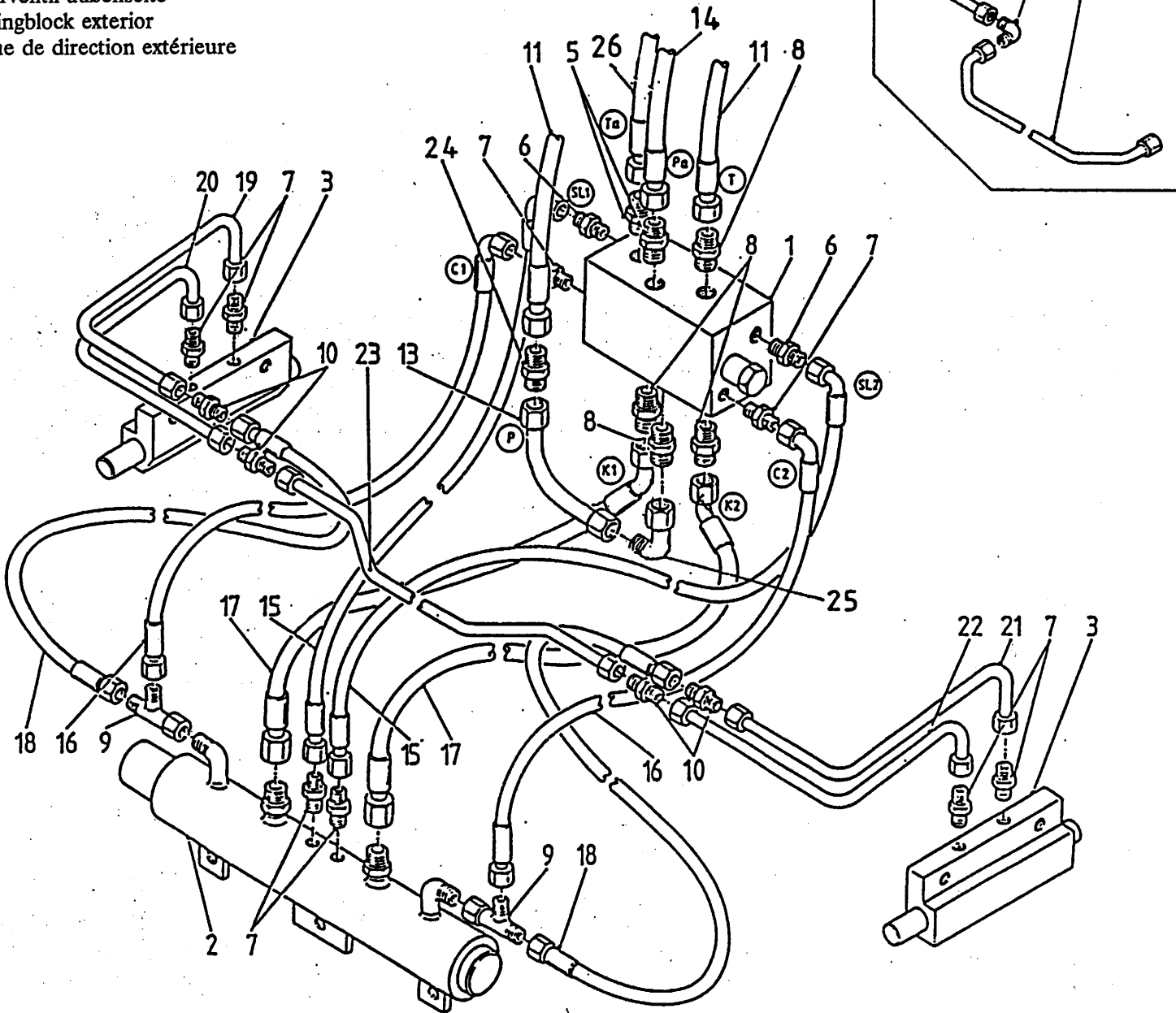
bestelnummer  
ordernummer  
num.à commander  
Bestellnummer

1	98062
2	98053
3	98054
4	98052
5	98051
6	98058
7	98056
8	98055
9	91015
10	98049
11	83150
12	84305
13	05154
14	98065

92102

Afb. 13

Stuurblok uitwendig  
 Steuerventil außenseite  
 Steeringblock exterior  
 Bloque de direction extérieure



bestelnummer  
 ordernummer  
 num.à commander  
 Bestellnummer

1	53159	1	
2	51061	1	
3	51057	2	
5	X50113	2	
6	X50114	2	
7	X50104	8	
8	X50102	4	
9	X50300	2	
10	X50135	4	
11	W50675	2	½" 4300 RR
13	50893	1	
14	W50915	1	⅝" 4100 RR
15	W50894	2	¼" 400 RH
16	W50895	2	¼" 300 RH
17	W50879	2	½" 290 R 45°
18	W50896	2	¼" 460 RR
19	50876	1	
20	50875	1	
21	50878	1	
22	50877	1	
23	50890	1	
23A	50892	1	
23B	50424	1	
23C	50891	1	
24	X50162	1	
25	X50143	1	
26	W50658	1	⅝" 4000 RH

92102

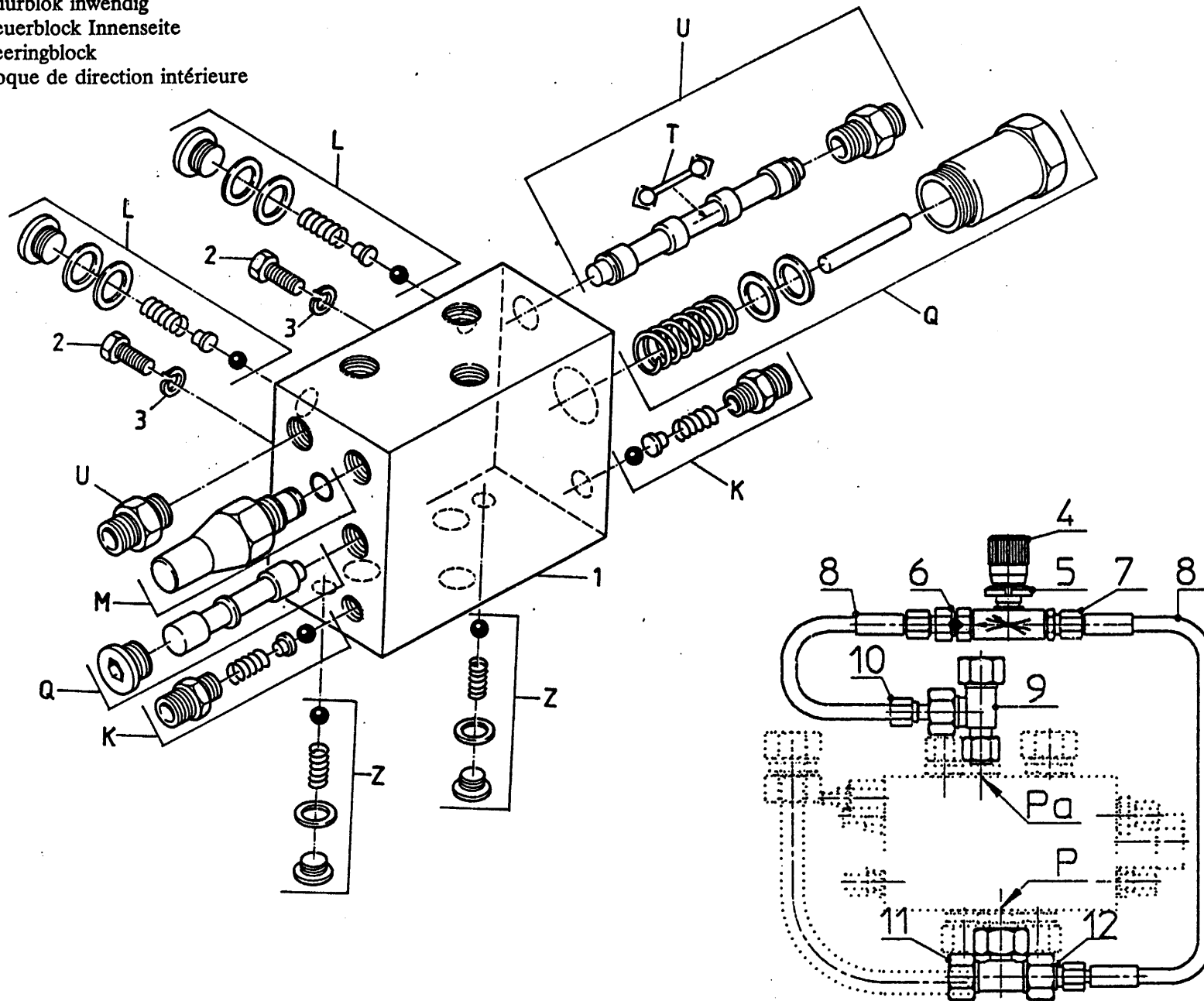
Afb. 14

Stuurblok inwendig

Steuerblock Innenseite

Steeringblock

Bloque de direction intérieure



bestelnummer

ordernummer

num.à commander

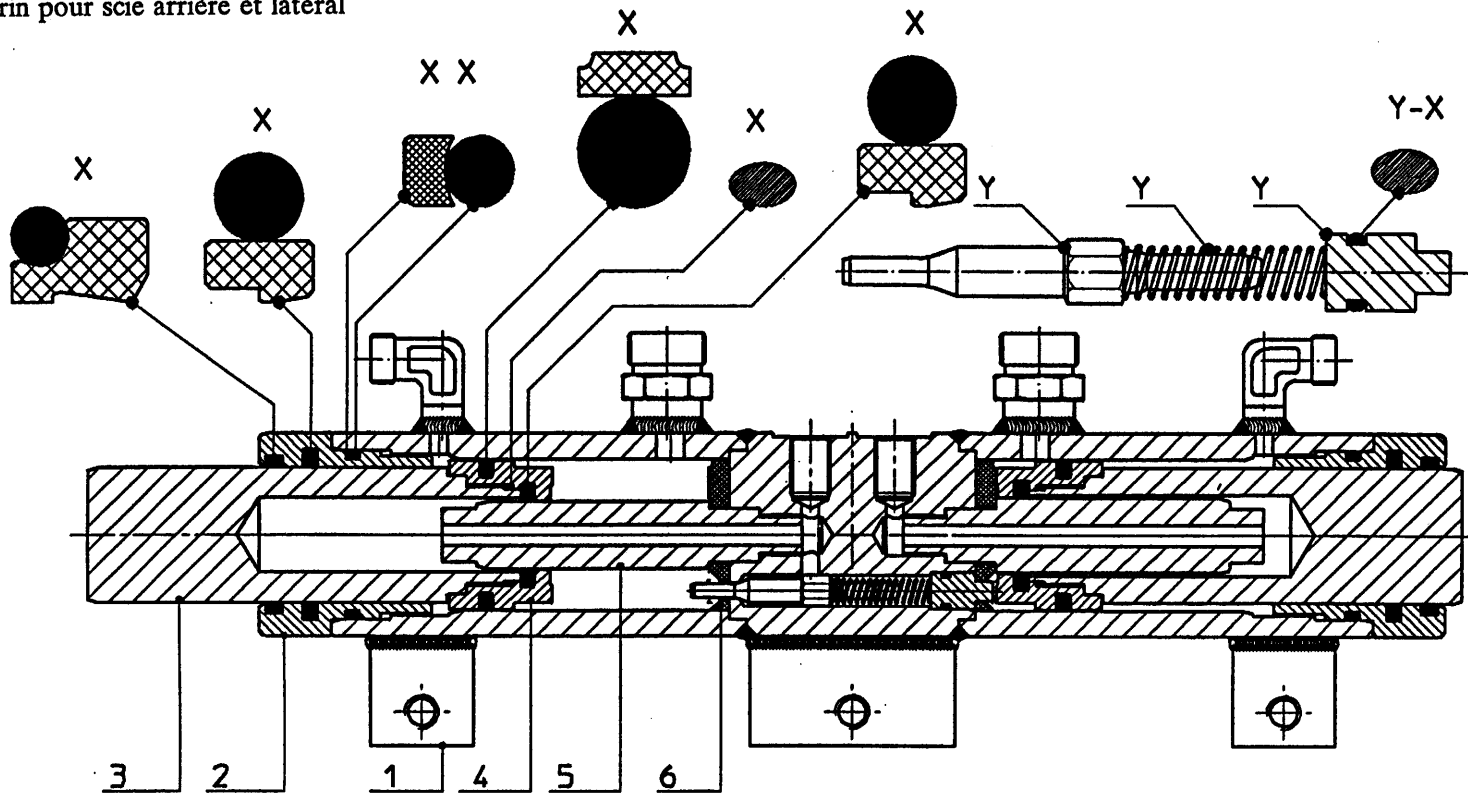
Bestellnummer

1	53159	1	
2	80816	2	M8 x 16
3	85008	2	M8
4	53200	1	
5	86128	1	M20 x 1
6	53005	1	
7	X50202	1	
8	W50896	2	
9	X50309	1	
10	X50157	1	
11	X50362	1	
12	X50304	1	
K	05049	2	10 bar
L	05264	2	200 bar
M	05265	1	
Z	05052	2	
U	53201	1	

92102

**Afb. 15**

Achter- en zijmescilinder  
 Heck- und Seitenzylinder  
 Rear and side knifecylinder  
 Vérin pour scie arrière et lateral



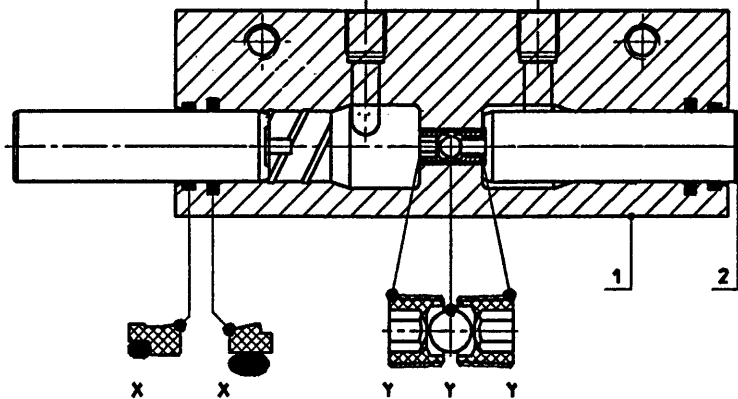
bestelnummer  
 ordernummer  
 num.à commander  
 Bestellnummer

51061

1	11582	1
2	31421	2
3	31455	2
4	31453	2
5	31454	2
6	31428	2
X	05306	1
Y	05297	2

51057

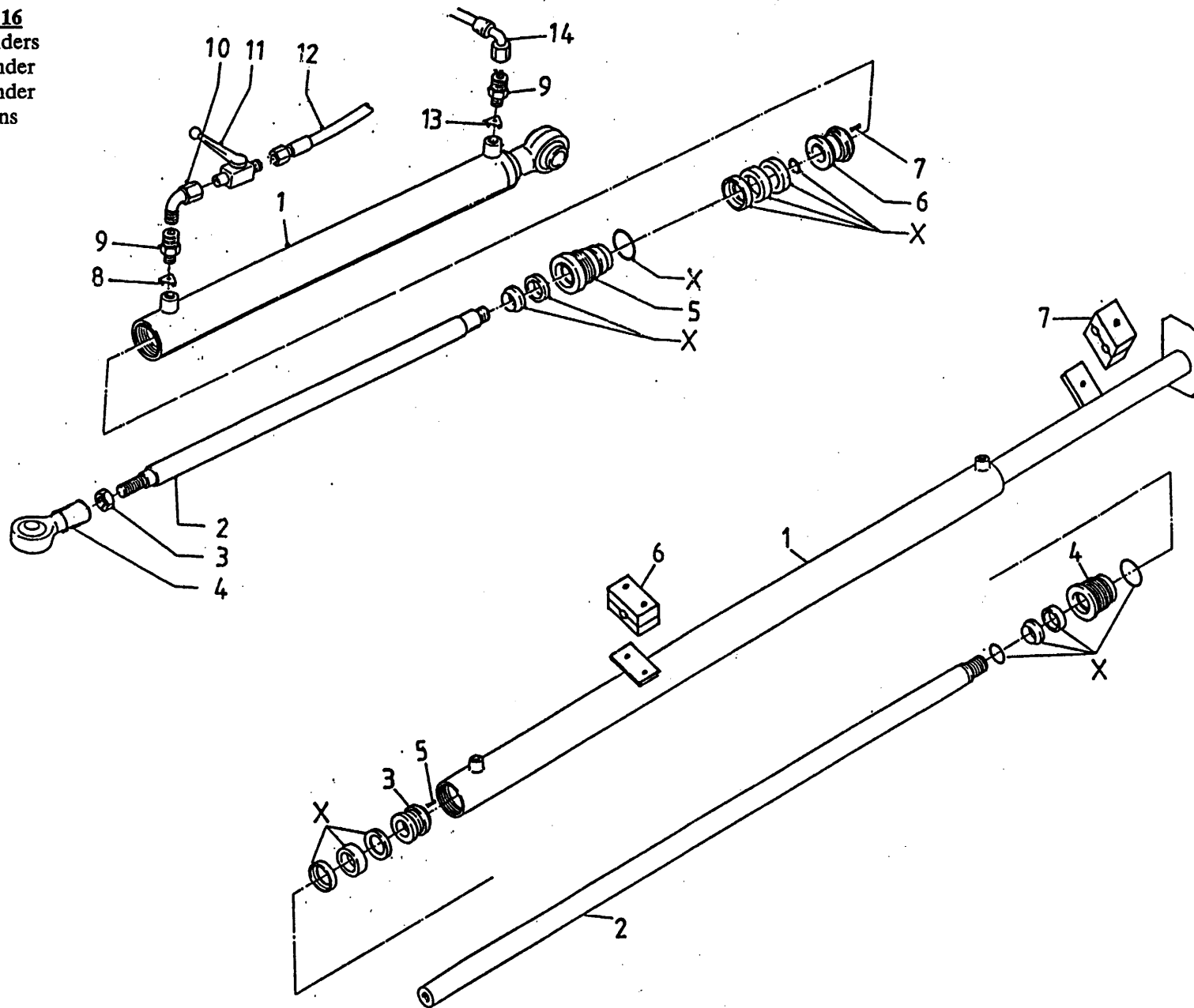
1	31435	1
2	31436	2
X	05294	1
Y	05298	1



92102

**Afb. 16**

Cilinders  
Zylinder  
Cylinder  
Verins



bestelnummer  
ordernummer  
num.à commander  
Bestellnummer

51069

1	11465	1	
2	31472	1	
3	86140	1	M 40 x 2
4	11669	1	
5	30903	1	
6	30856	1	
7	84119	1	M 6 x 10
8	53202	1	φ 1
9	X50113	2	
10	50122	1	
11	51045	1	
12	W50915	1	3/8" 4100 RR
13	53173	1	φ 2
14	W50658	1	3/8" 4000 RH
X	05190	1	

51047

1	11500	1	
2	31352	1	
3	31077	1	
4	31354	1	
5	84119	1	M 6 x 10
6	90160	1	
7	90159	1	
X	05305	1	

92102

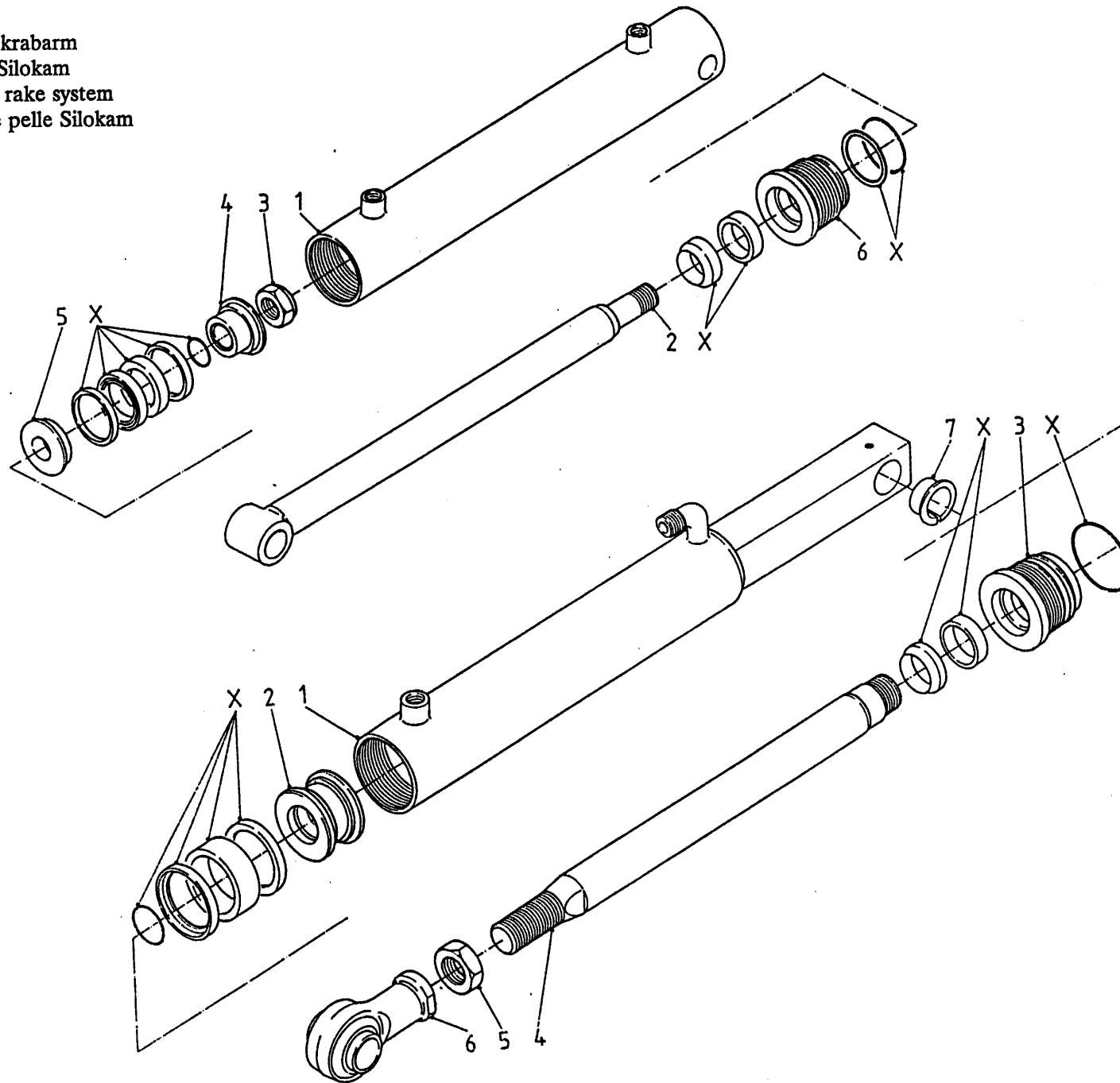
Afb. 17

Cilinders krabarm

Zylinder Silokam

Cylinders rake system

Verins de pelle Silokam



bestellnummer  
ordernummer  
num.à commander  
Bestellnummer

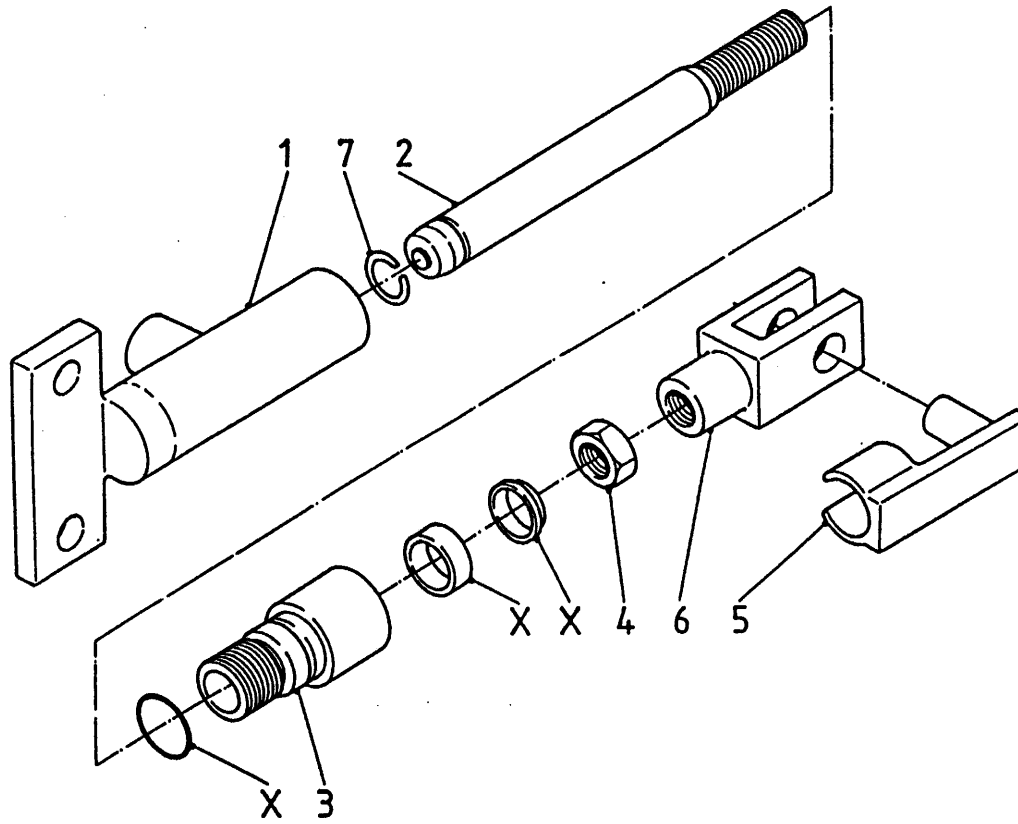
	<b>50064</b>	
1	11277	1
2	11278	1
3	86924	1
4	31131	1
5	31132	1
6	31130	1
X	05237	1

	<b>51018</b>	
1	11280	1
2	30519	1
3	30520	1
4	31138	1
5	86130	1
6	90157	1
7	51747	2
X	05238	1

92102

Afb. 18

Cilinder doseerklep  
Zylinder Dosierklappe  
Cylinders Sidedoor  
Verin de Volet



bestelnummer  
ordernummer  
num.à commander  
Bestellnummer

	51021	
1	11318	1
2	31160	1
3	31158	1
4	86115	1
5	31169	1
6	31168	1
7	85235	1
X	05236	1



92102

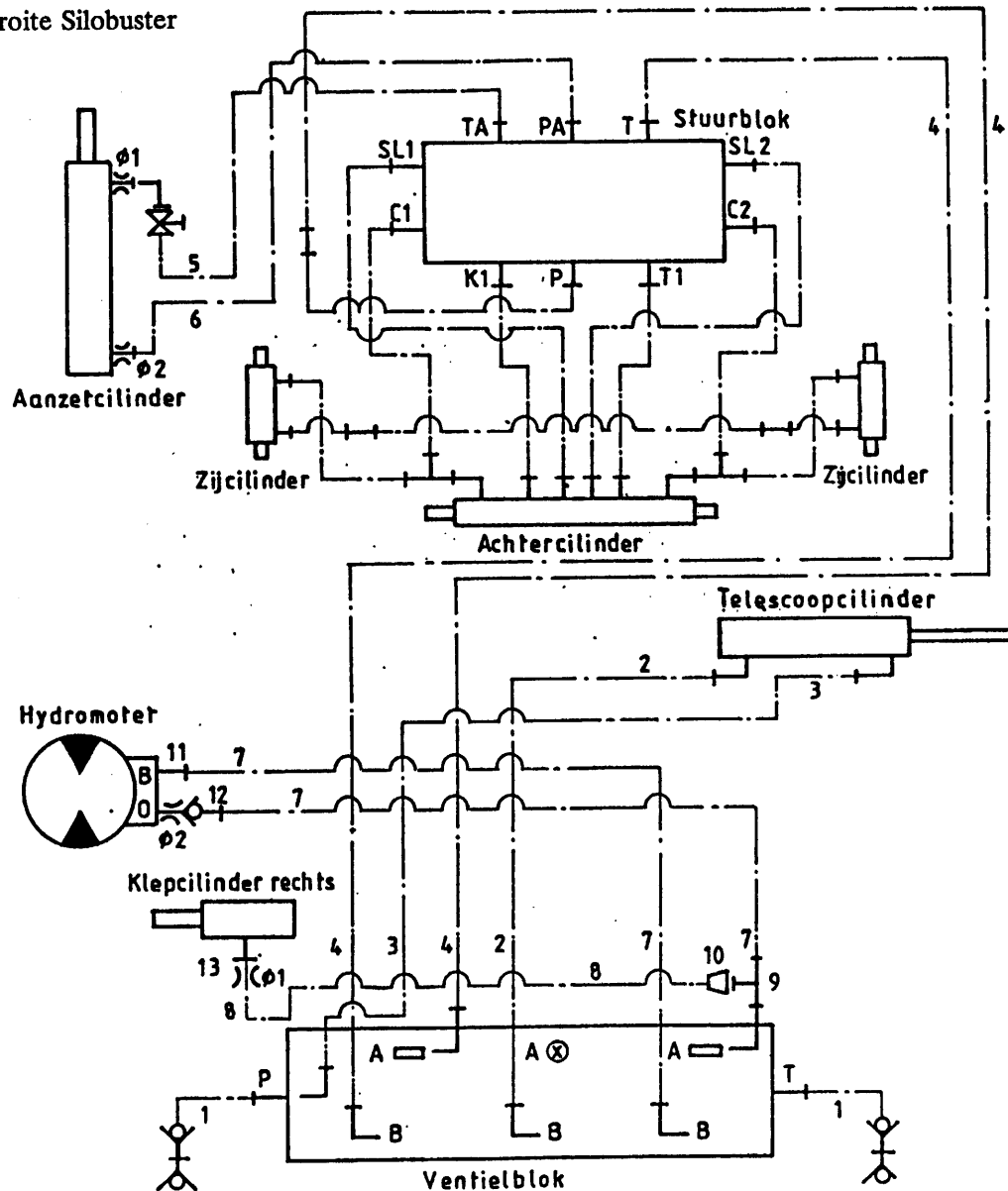
Afb. 19

Leidingschema rechts lossend Silobuster

Hydraulik-Plan Verteilung rechts Silobuster

Hydraulic scheme for RH distribution Silobuster

Circuit hydr. pour simple démêleur à droite Silobuster



bestelnummer  
ordernummer  
num.à commander  
Bestellnummer

1	W50601	2	1/2" 1800 RH
2	W50812	1	1/2" 1650 RH
3	W50643	1	1/2" 2500 RH
4	W50675	2	1/2" 4300 RR
5	W50915	1	3/8" 4100 RR
6	W50658	1	3/8" 4000 RH
7	W50747	2	1/2" 650 RR
8	W50637	1	1/4" 1400 RH
9	X50303	1	
10	X50304	1	
11	X50117	1	
12	X53132	1	φ 2 mm
13	30941	1	φ 1 mm

92102

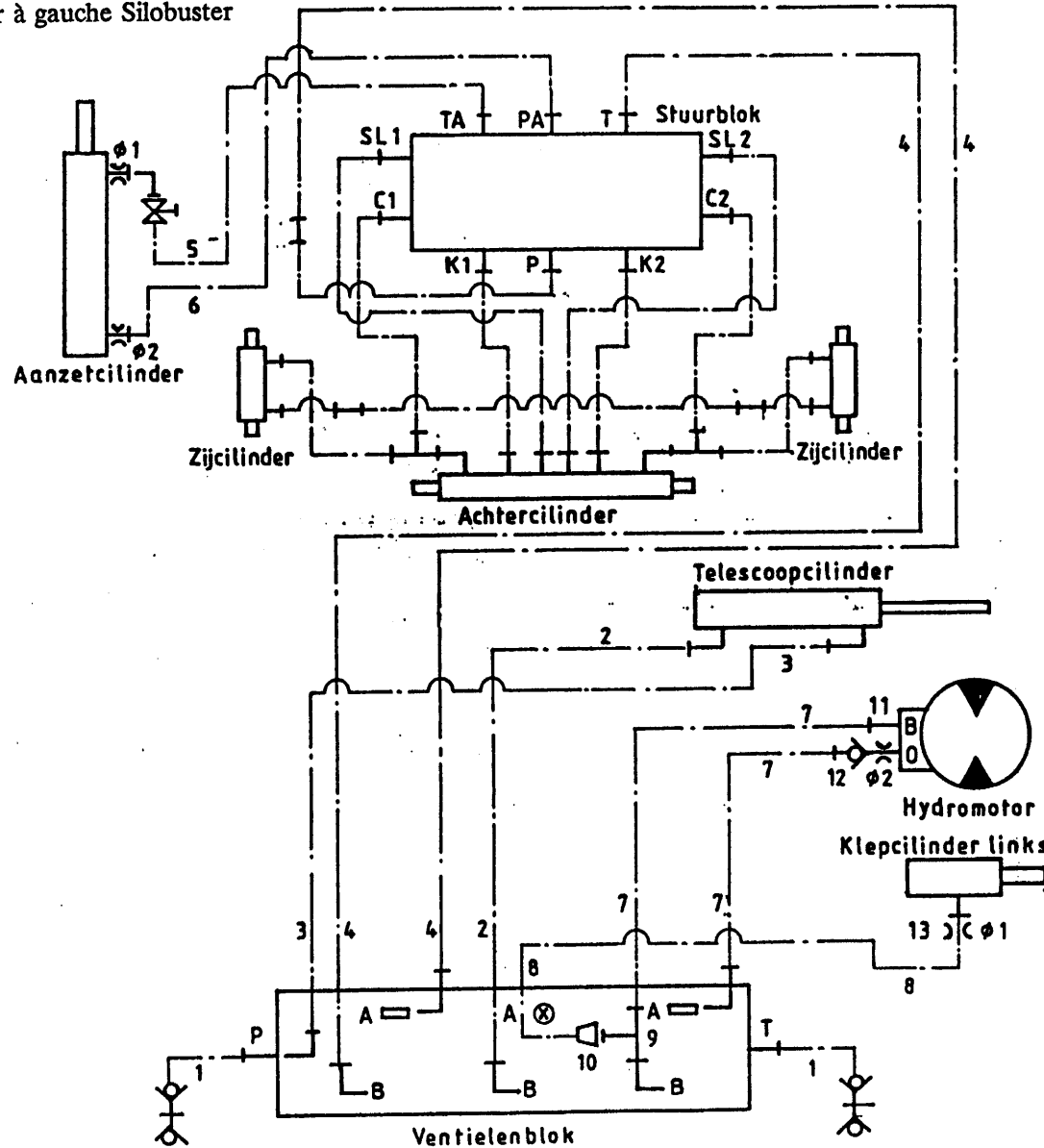
Afb. 20

Leidingschema links lossend Silobuster

Hydraulik-Plan Verteilung Links Silobuster

Hydraulic scheme for LH distribution Silobuster

Circuit hydr. pour simple démêleur à gauche Silobuster



bestelnummer  
 ordernummer  
 num.à commander  
 Bestellnummer

1	W50601	2	1/2" 1800 RH
2	W50812	1	1/2" 1650 RH
3	W50643	1	1/2" 2500 RH
4	W50675	2	1/2" 4300 RR
5	W50915	1	3/8" 4100 RR
6	W50658	1	3/8" 4000 RH
7	W50641	2	3/8" 4000 RH
8	W50637	1	1/2" 1800 RR
9	X50303	1	1/4" 1400 RH
10	X50304	1	
11	X50117	1	
12	X53132	1	φ 2 mm
13	30941	1	φ 1 mm



92102

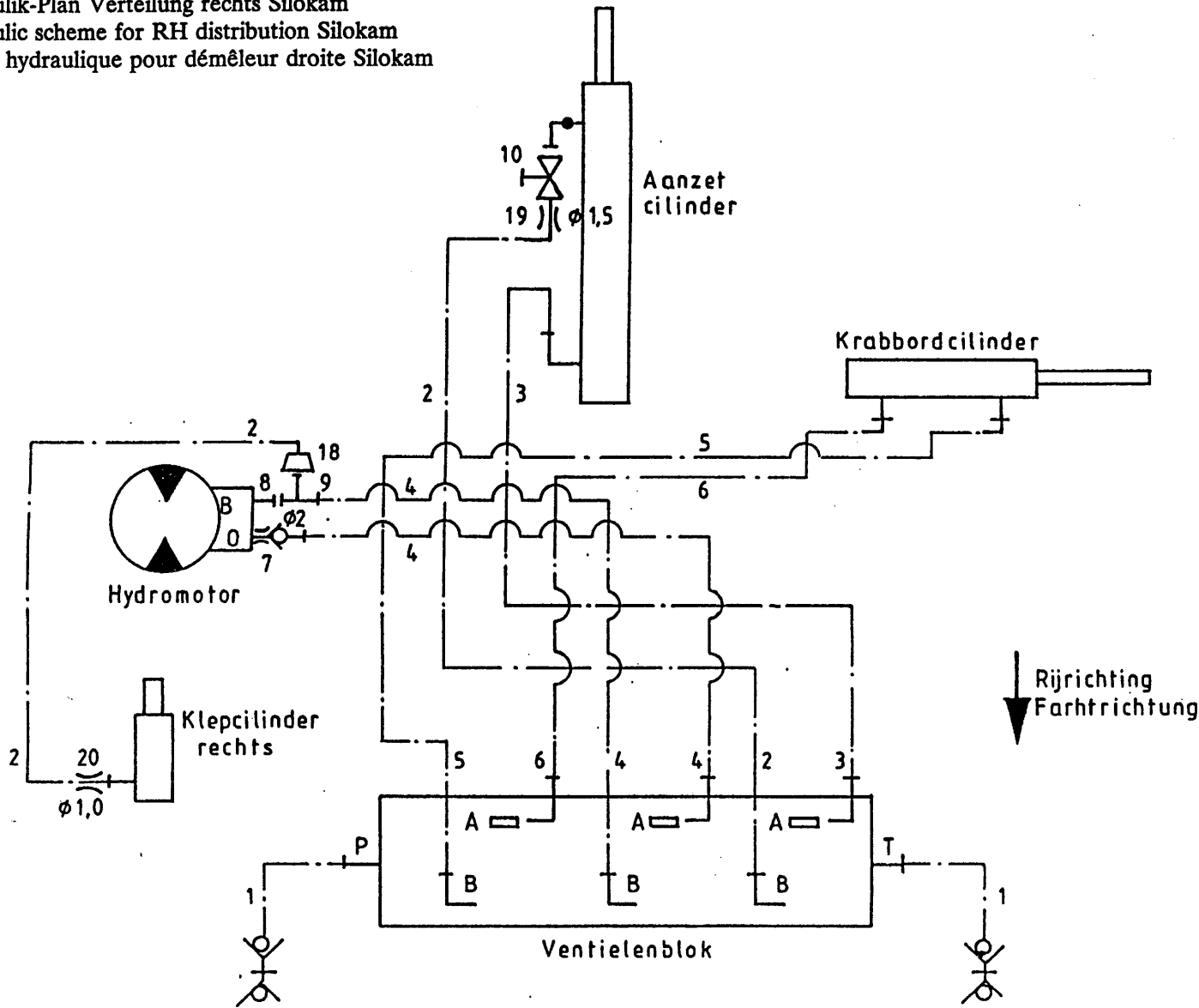
Afb. 22

Leidingschema rechts lossend Silokam

Hydraulik-Plan Verteilung rechts Silokam

Hydraulic scheme for RH distribution Silokam

Circuit hydraulique pour démêleur droite Silokam



bestelnummer  
ordernummer  
num.à commander  
Bestellnummer

1	W50805	2	1/2" 1400 RH
2	W50650	2	1/4" 1000 RH
3	W50821	1	1/4" 1650 RR
4	W50641	2	1/2" 1800 RR
5	W50639	1	3/8" 2400 RZH
6	W50702	1	3/8" 2100 RZH
7	X53132	1	φ 2 mm
8	50117	1	
9	X50303	1	
10	51019	1	
18	X50304	1	
19	30752	1	φ 1,5 mm
20	30941	1	φ 1 mm

92102

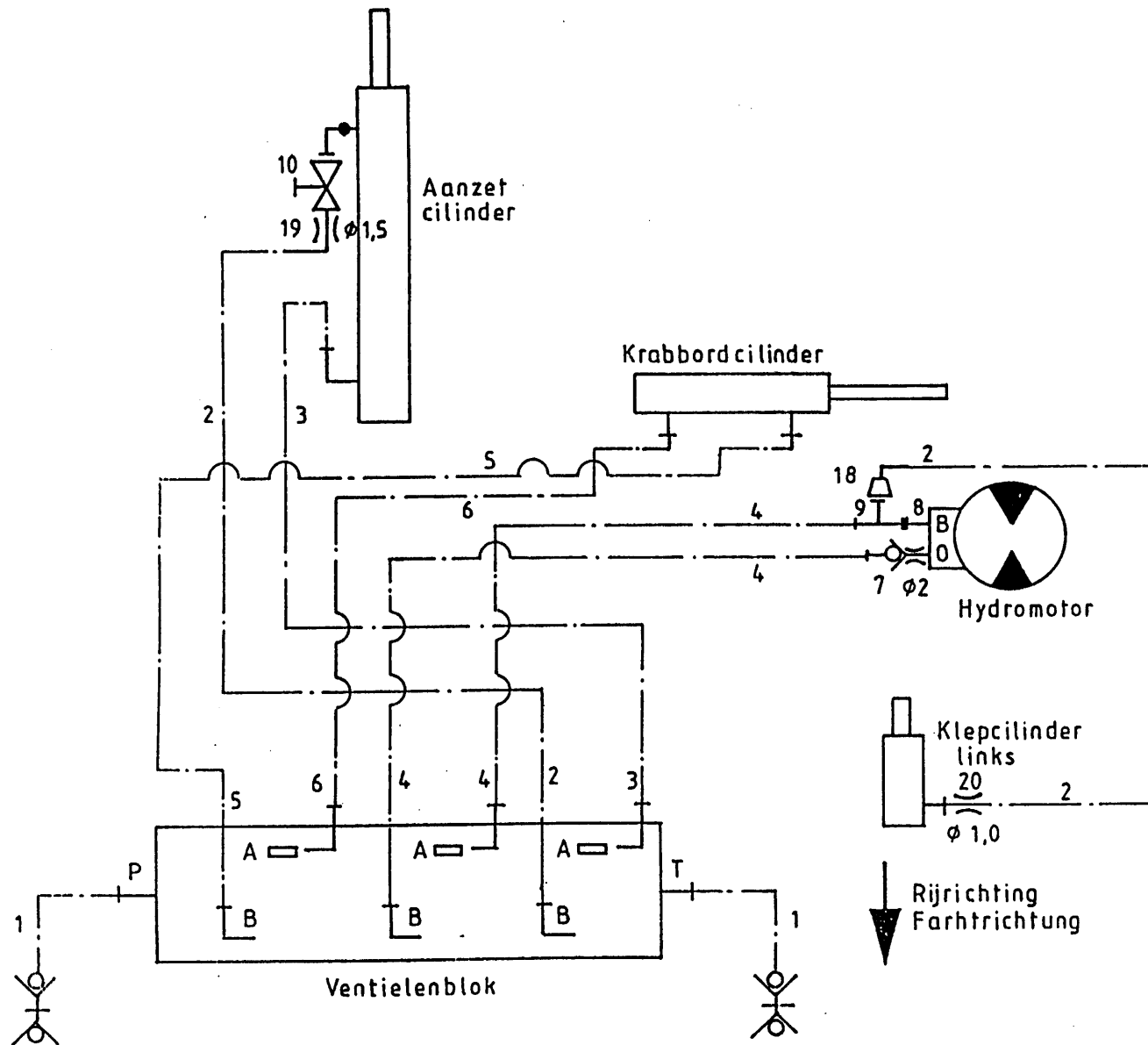
Afb. 23

Leidingschema links lossend Silokam

Hydraulik-Plan Verteilung links Silokam

Hydraulic scheme for LH distribution Silokam

Circuit hydraulique pour démêleur à gauche Silokam



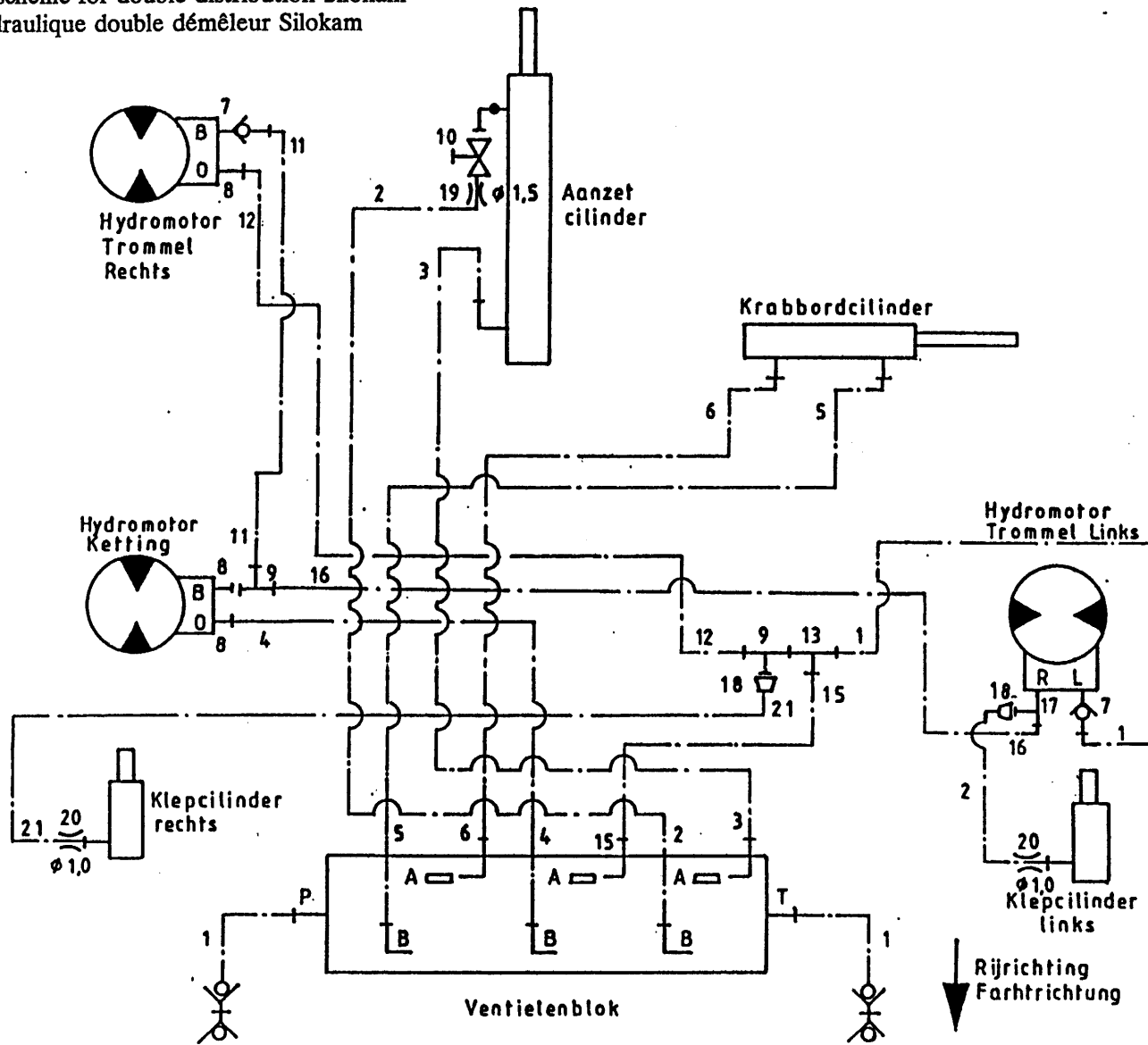
bestelnummer  
ordernummer  
num.à commander  
Bestellnummer

1	W50805	2	1/2" 1400 RH
2	W50650	2	1/4" 1000 RH
3	W50821	1	1/4" 1650 RR
4	W50815	2	1/2" 2650 RR
5	W50639	1	3/8" 2400 RZH
6	W50702	1	3/8" 2100 RZH
7	X53132	1	φ 2 mm
8	50117	1	
9	X50303	1	
10	51019	1	
18	X50304	1	
19	30752	1	φ 1,5 mm
20	30941	1	φ 1 mm

92102

Afb. 24

Leidingschema dubbelzijdig lossend Silokam  
 Hydraulik-Plan beidseitige Verteilung Silokam  
 Hydraulic scheme for double distribution Silokam  
 Circuit hydraulique double démêleur Silokam



bestelnummer  
 ordernummer  
 num.à commander  
 Bestellnummer

1	W50805	3	½" 1400 RH
2	W50650	2	¼" 1000 RH
3	W50821	1	¼" 1650 RR
4	W50641	1	½" 1800 RR
5	W50639	1	⅜" 2400 RZH
6	W50702	1	⅜" 2100 RZH
7	53131	2	
8	50117	3	
9	X50303	2	
10	51019	1	
11	W50748	1	½" 2200 RH
12	W50725	1	½" 2600 RH
13	X50357	1	
15	W50818	1	½" 1650 RR
16	W50822	1	½" 1900 RH
17	X50311	1	
18	X50304	2	
19	30752	1	φ 1,5mm
20	30941	2	φ 1 mm
21	W50650	1	¼" 1000 RH

92102

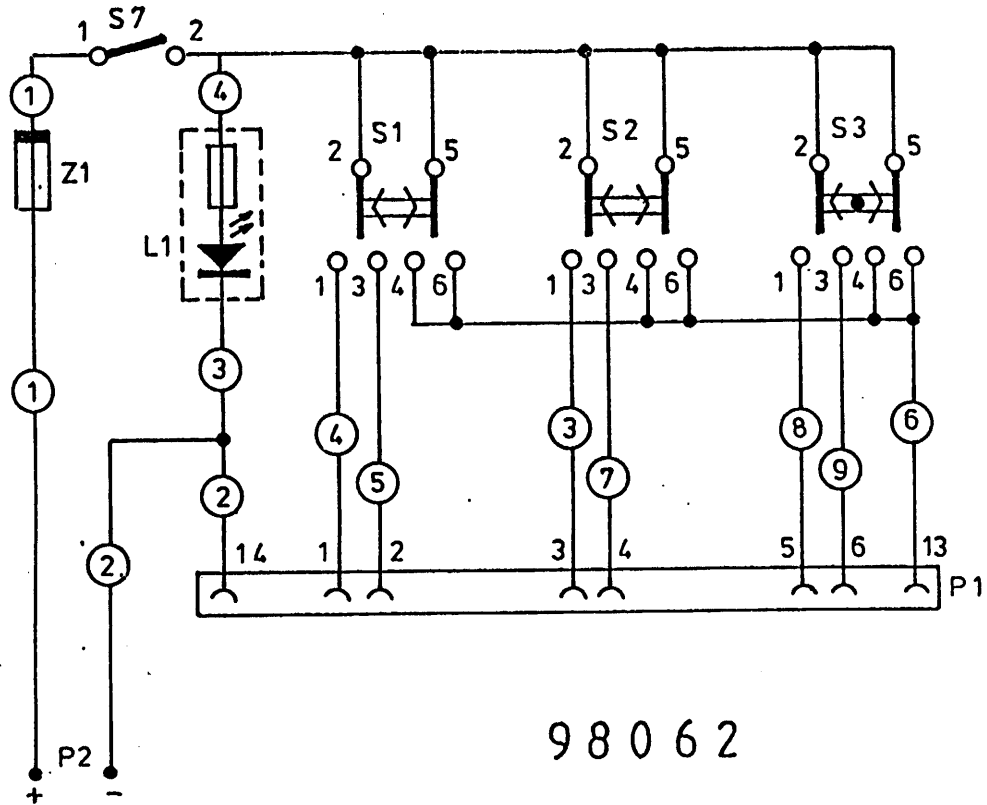
Afb. 25

Elektrisch schema

Elektrischer Schaltplan

Wiring diagramm

Plan de connection electrique



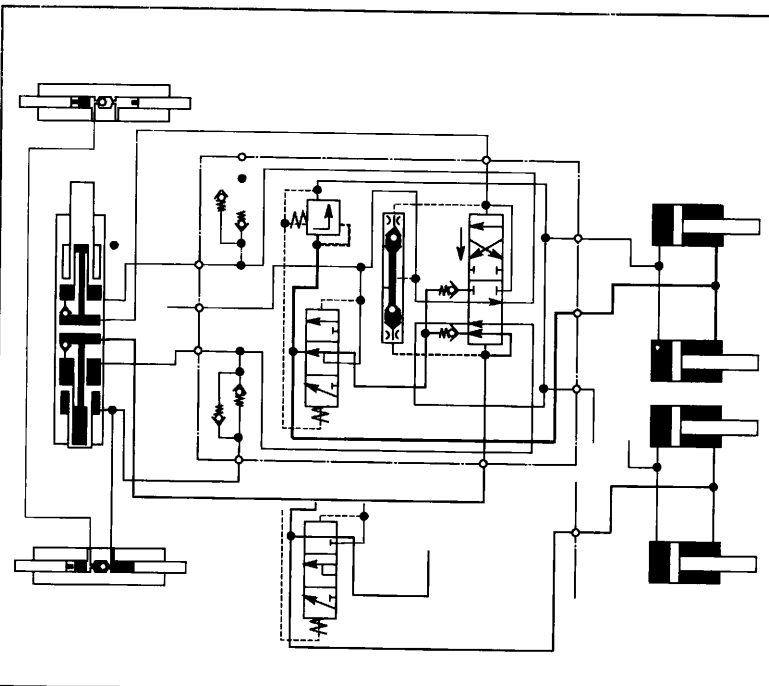
98062

	Kleurcodering	Farbenschlüssel	Colour code	Code des couleurs
1	Bruin	Braun	Brown	Brun
2	Blauw	Blau	Blue	Bleu
3	Geel	Gelb	Yellow	Jaune
4	Rood	Rot	Red	Rouge
5	Oranje	Orange	Orange	Orange
6	Paars	Violet	Purple	Violiet
7	Groen	Grün	Green	Vert
8	Wit	Weiß	White	Blanc
9	Grijs	Grau	Grey	Gris

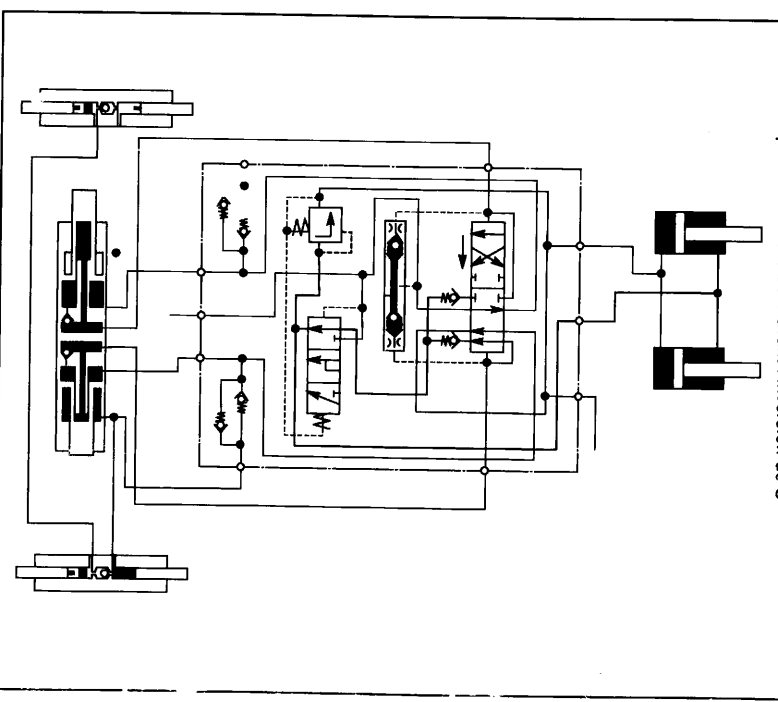




Afb. B  
 Snelgang  
 Elfgang  
 Fast Movement  
 Mouvement de vitesse



Afb. C  
 Schakelmoment na openen van V vóór omschakeling van U  
 Umschaltung nach öffnen von V bevor Umschaltung von U  
 Switching moment after opening of V before change-over U  
 L'inversion après l'ouverture de V avant l'inversion de U



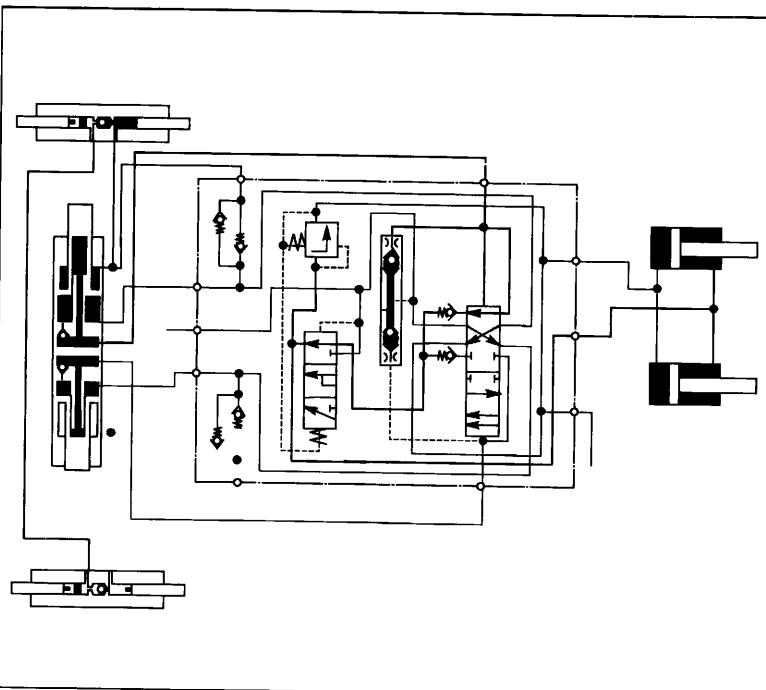
Geel  
 Zwart  
 - pers (gesl. syst.)  
 - pers tractor  
 - retour  
 - pers plunjerpomp  
 - retour (gesl. syst.)

Gelb  
 Schwarz  
 - Druck (geschl. syst.)  
 - Druck Schlepper  
 - Rücklauf  
 - Druck Kolbenpumpe  
 - Rücklauf (geschl. syst.)

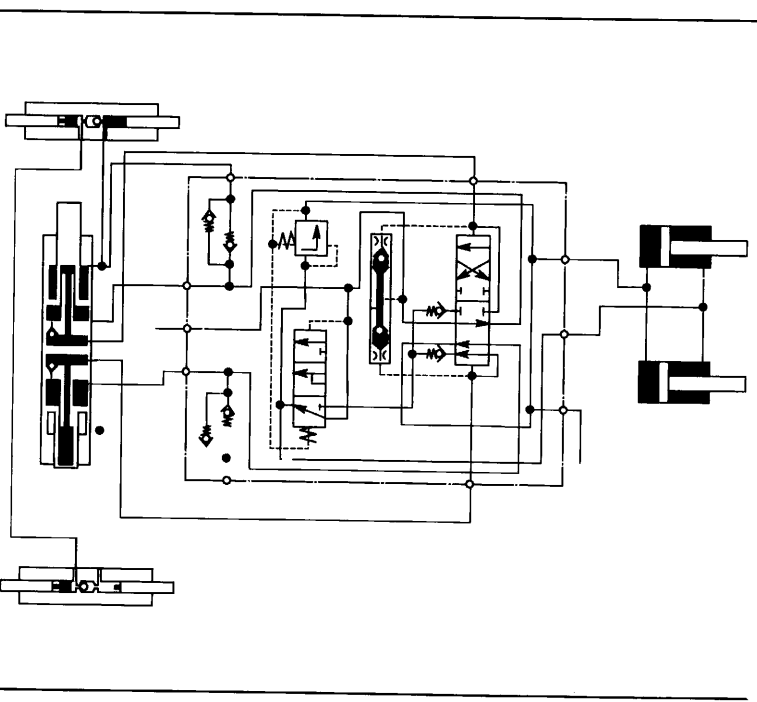
Yellow  
 Black  
 - delivery (closes syst.)  
 - delivery tractor  
 - return  
 - delivery pump plunger  
 - delivery (closes syst.)

Jaune  
 Noir  
 - presse (syst. fermé)  
 - presse tracteur  
 - retour  
 - presse plongeur  
 - retour (syst. fermé)

Afb. D  
 Snijden na omschakeling van U  
 Schneiden nach Umschaltung von U  
 Cutting after change-over of U  
 Coupant après l'inversion de U



Afb. E  
 Snijsraam heffen  
 Schneidrahmen heben  
 Lifting the cutting frame  
 Cadre de coupe en hausse



# TRIOLIET

TRIOLIET MULLOS BV

Smitsbreeweg 2, 7581 HE Losser - Holland

Postbus 202, 7580 AE Losser / Postfach 202, 7580 AE Losser - Holland

Tel.: 053 - 53 81 700 / Tel.: (+) 31 - 53 - 53 81 700

Fax 053 - 53 87 605 / Fax (+) 31 - 53 - 53 87 605

Voor onderdelen / Für Ersatzteile:

Tel.: 053 - 53 82 972 / Tel.: (+) 31 - 53 - 53 82 972

Fax: 053 - 53 88 998 / Fax: (+) 31 - 53 - 53 88 998