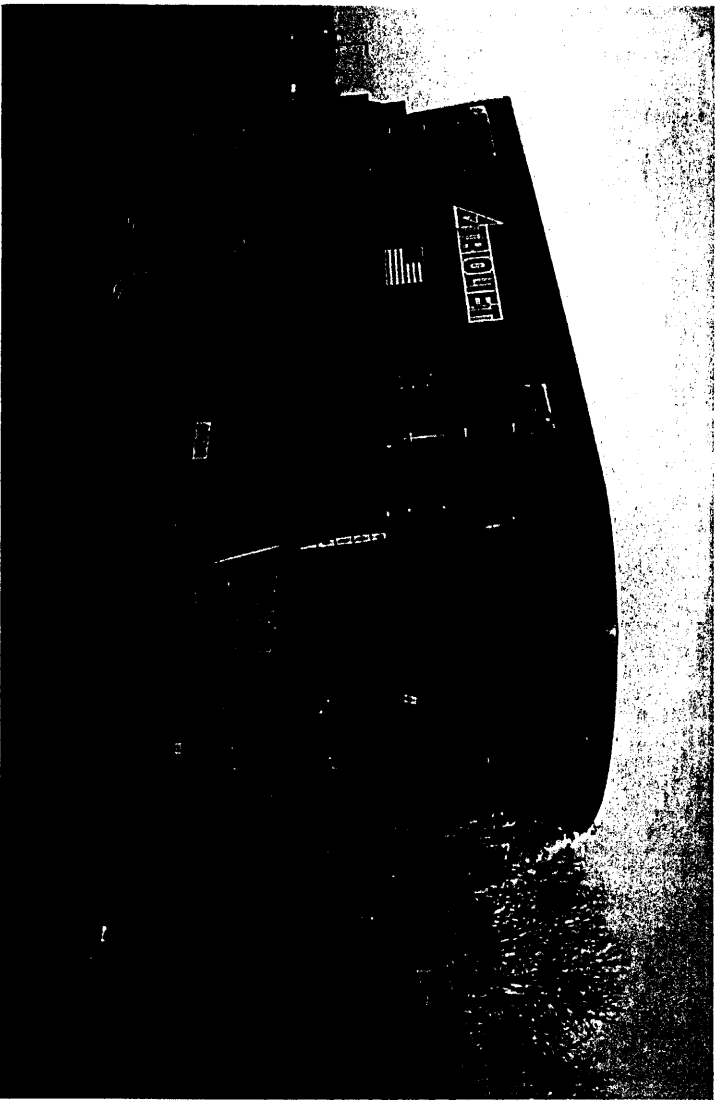


Trioliet Mullos

Meng- doseerwagen met dwarverband
Futter-, Misch- und Verteilwagen
Feeder Mixer
Mélangeuse - distributrice

Solomix-3 3000



Onderdelenlijst/Ersatzteilliste/Spare parts list/ Liste de Pièces de Réchange

Bestelnummer/Bestellnummer/Order number/Numéro de commande 92196

Geldig vanaf productieserie nr. / Gültig ab / Valid from Prod. Series No. /

A partir du Série de production No.: 01

INHOUDSOPGAVE

Afb.	
1	Stickers
2	Dissel
3A	Tandemstel
3B	Rem en wiel
4	Frame zijlossend
5	Standmelder doseerschuiif
6A	Aandrijving en mengvijzel
6B	Vijzelmessen
7	Doseer Klepcilinder
8	Mechanische bediening
9	Elektrische bediening
10A	Slangenschema directe aansluiting ZK
10B	Slangenschema mechanische bediening ZK
10C	Slangenschema elektrische bediening ZK
11	Elektronische weeginstallatie
12	Elektrische bediening contrames
13	Hydraulische steunpoot
14	Koelsysteem
15	Aftakas

INHALTVERZEICHNIS

Abb.	
1	Aufkleber
2	Deichsel
3A	Pendelachse mit Bremsanlage
3B	Bremse und Rad
4	Rahmen seitliche Entleerung
5	Dosierschieber Anzeiger
6A	Schnecke und Antrieb
6B	Schneckenmesser
7	Auswurfschieberzylinder
8	Mechanische Fernbedienung
9	Elektrische Fernbedienung
10A	Hydraulikplan direktanschluß ZK
10B	Hydraulikpan mechanische Bedienung ZK
10C	Hydraulikplan elektrische Bedienung ZK
11	Elektronische Waage
12	Elektrische Fernbedienung kontramesser
13	Hydraulischer Stützfuß
14	Kühlanlage
15	Gelenkwelle

CONTENTS

Picture

1	Decals
2	Drawbar
3A	Balancer with brake system
3B	Brakes with wheel
4	Frame side discharge
5	Slide position indicator
6A	Auger and drive system
6B	Auger knives
7	Slide cilinder
8	Mechanical remote control
9	Electrical remote
10A	Hydraulics direkt connection
10B	Hydraulic scheme of mechanical control ZK
10C	Hydraulic scheme with electrical side delivery ZK
11	Electronic weighing system
12	Electrical control of counter knife
13	Hydraulic support
14	Cooling system
15	PTO shaft

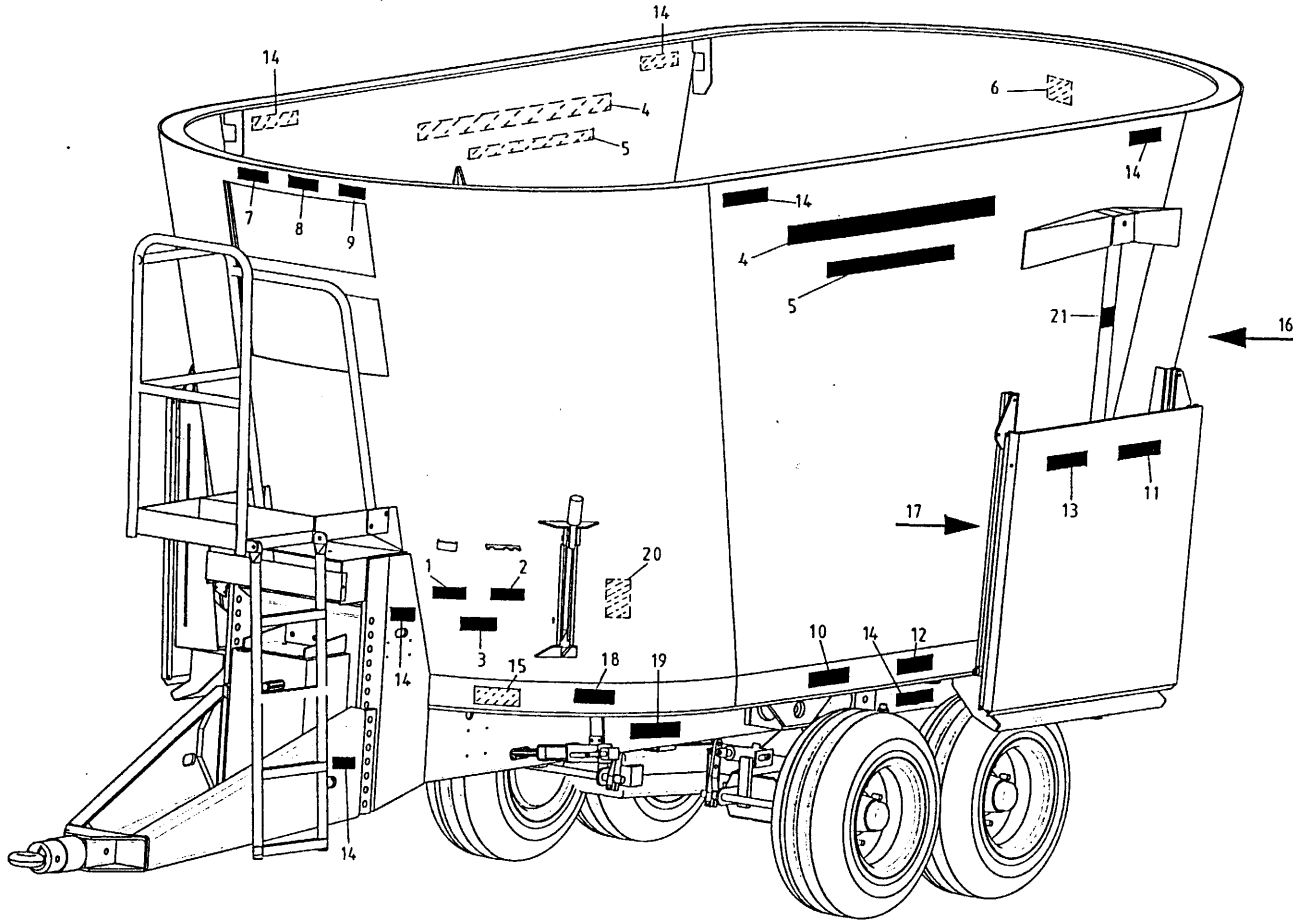
TABLE DES MATIÈRES

Illustr.

1	Autocollants
2	Timon
3A	Des balancines avec système de freinage
3B	Freinage et roue
4	Bâti trappe Latéral
5	Indicateur de la trappe de dosage
6A	Vis et système d'entraînement
6B	Couteaux
7	Porte de dosage: cylindre hydraulique
8	Commande mécanique distribution tapis
9	Commande électrique
10A	Distribution a trappe: système hydraulique
10B	Schéma hydraulique de la commande mécanique ZK
10C	Schéma hydraulique de la trappe latéral ZK
11	Pésee électronique
12	Commande électrique de la contre-lame
13	Béquille hydraulique
14	Système de refroidissement
15	Arbre de prise de force

92196

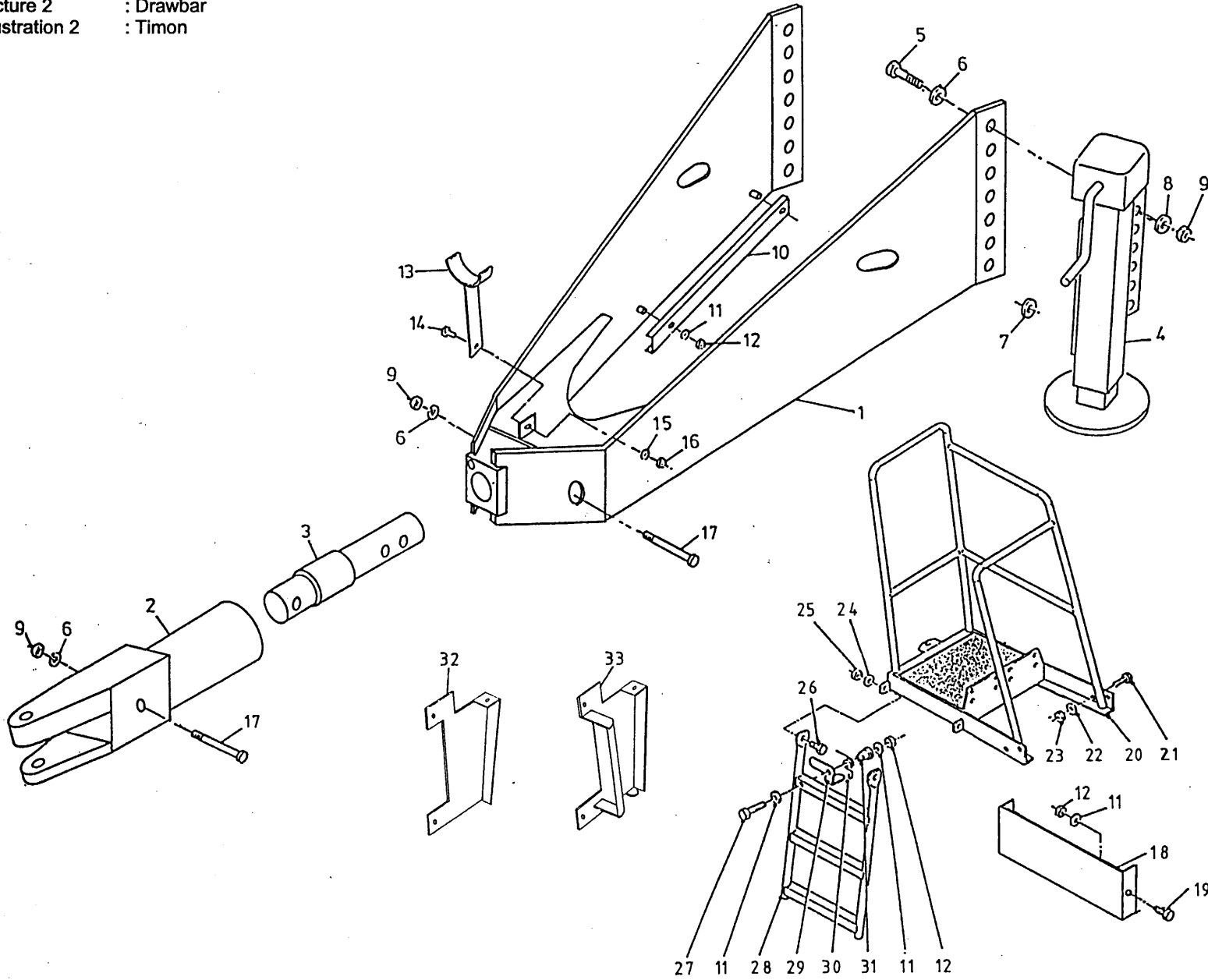
Afbeelding 1 : Stickers
 Abbildung 1 : Aufkleber
 Picture 1 : Decals
 Illustration 1 : Autocollants



bestelnummer		ordernummer	
Num. à commander		Bestellnummer	
1	91160	1	
2	91159	1	
3	91243	1	
4	91304	2	
5	91371	2	3000
6	91241	1	
7	91245	1	
8	91240	1	
9	91242	1	
10	91228	2	
11	91211	3	
12	91330	2	6,0 bar
13	91327	3	
14	91183	10	
15	91118	1	
16A	91331	1	8 kmh
16B	91220	1	25 kmh
17	91143	2	
18	91335	1	
19	91333	6	
20	91340	1	
21	91182	1	

92196

Afbeelding 2 : Dissel
 Abbildung 2 : Deichsel
 Picture 2 : Drawbar
 Illustration 2 : Timon



bestelnummer

ordernummer

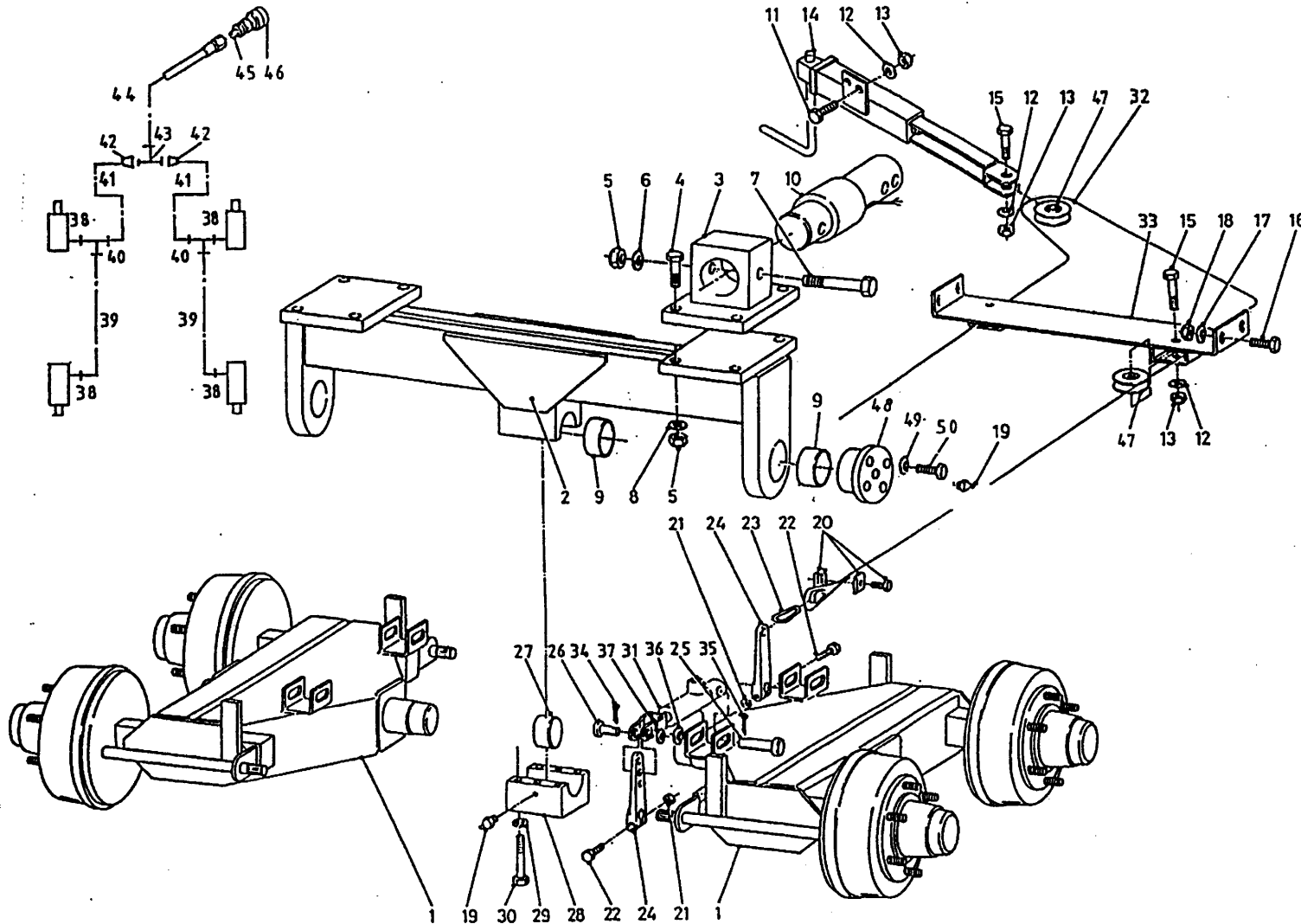
Num. à commander

Bestellnummer

1	13150	1	
2	13151	1	
3	90841	1	Ø88.9 3½"
4	11946	1	
5	82409	8	M24 x 90 8.8
6	85124	8	M24
7	31627	3	
8	85024	8	M24
9	86224	10	M24
10	40431	1	
11	85108	6	M8
12	86208	5	M8
13	11709	1	
14	81026	1	M10 x 25
15	85110	1	M10
16	86210	1	M10
17	85420	2	M24 x 200 12.9
18	27997	1	
19	80821	2	M8 x 20
20	12556	1	
21	81636	4	M16 x 35
22	85116	4	M16
23	86216	4	M16
24	85112	2	M12
25	86212	2	M12
26	81231	2	M12 x 30
27	80841	1	M8 x 40
28	12777	1	
29	28064	1	
30	65088	1	
31	32064	1	
32	13221	1	
33	13222	1	

92196

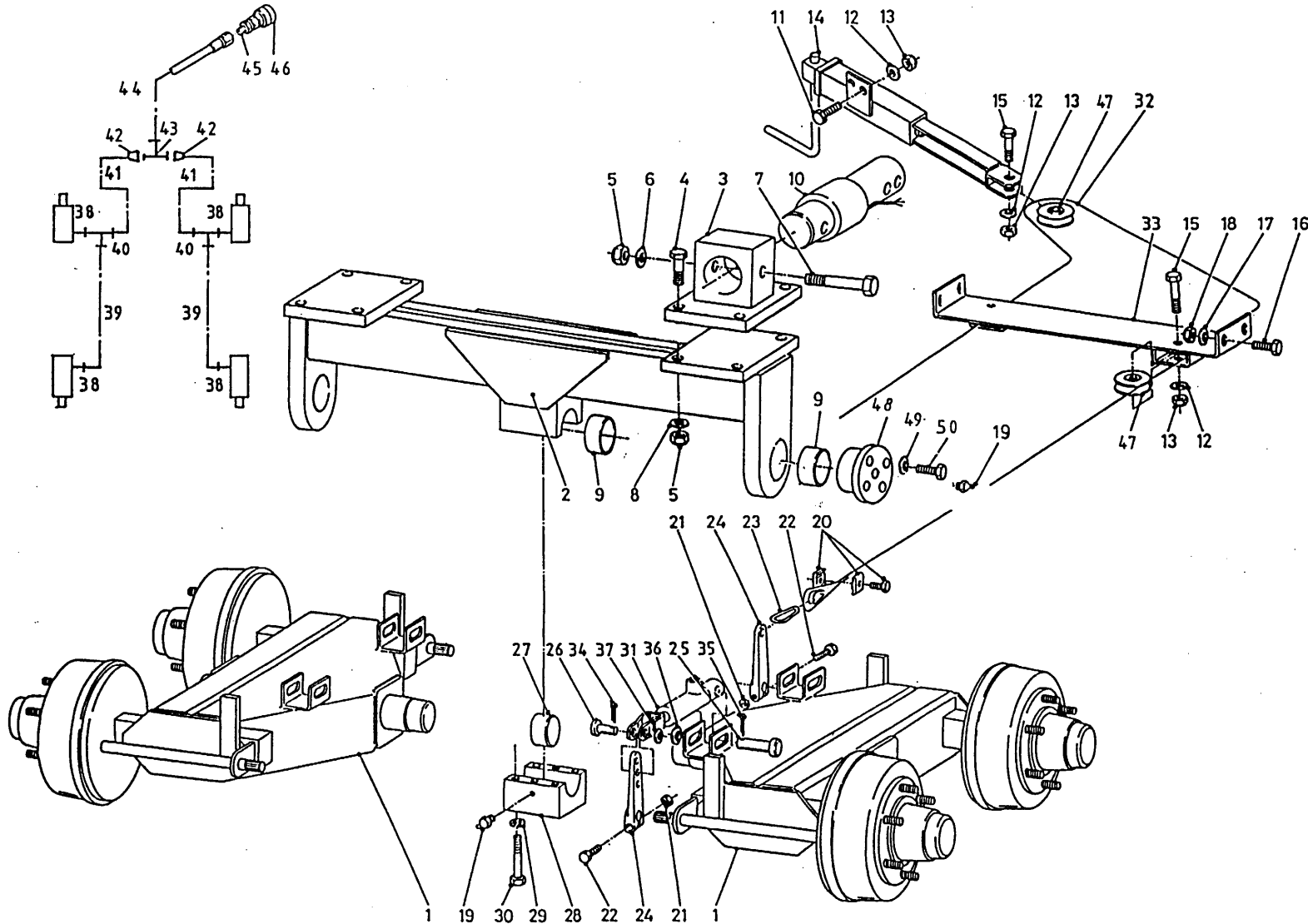
Afbeelding 3A : Tandemstel
 Abbildung 3A : Pendelachse mit Bremsanlage
 Picture 3A : Balancer with brake system
 Illustration 3A : Des balancines avec système de freinage



bestelnummer		ordernumber		Num. à commander		Bestellnummer	
1	13158	2					
2	13159	1					
3	12848	2					
4	82409	8	M24 x 90 8.8				
5	86124	12	M24				
6	85124	4	M24				
7	82418	4	M24 x 180 12.9				
8	85024	8	M24				
9	85024	4	51901.				
10	90841	2	Ø88.9 3½"				
11	81031	2	M10 x 30				
12	85110	5	M10				
13	86810	5	M10				
14	11768	1					
15	81055	3	M10 x 55				
16	80831	4	M8 x 30				
17	85108	4	M8				
18	86208	4	M8				
19	89505	4	M8 x 1				
20	90430	2					
21	86110	4	M10				
22	81060	4	M10 x 60				
23	39139	2					
24	90507	4					
25	32202	4					
26	32203	4					
27	32233	1					
28	32232	1					
29	85120	6	M20				
30	82014	6	M20 x 140 12.9				
31	51110	4					
32	79078	1	L=5450				
33	12841	1					
34	88225	4	Ø 4 x 25				

92196

Afbeelding 3A : Tandemstel
 Abbildung 3A : Pendelachse mit Bremsanlage
 Picture 3A : Balancer with brake system
 Illustration 3A : Des balancines avec système de freinage

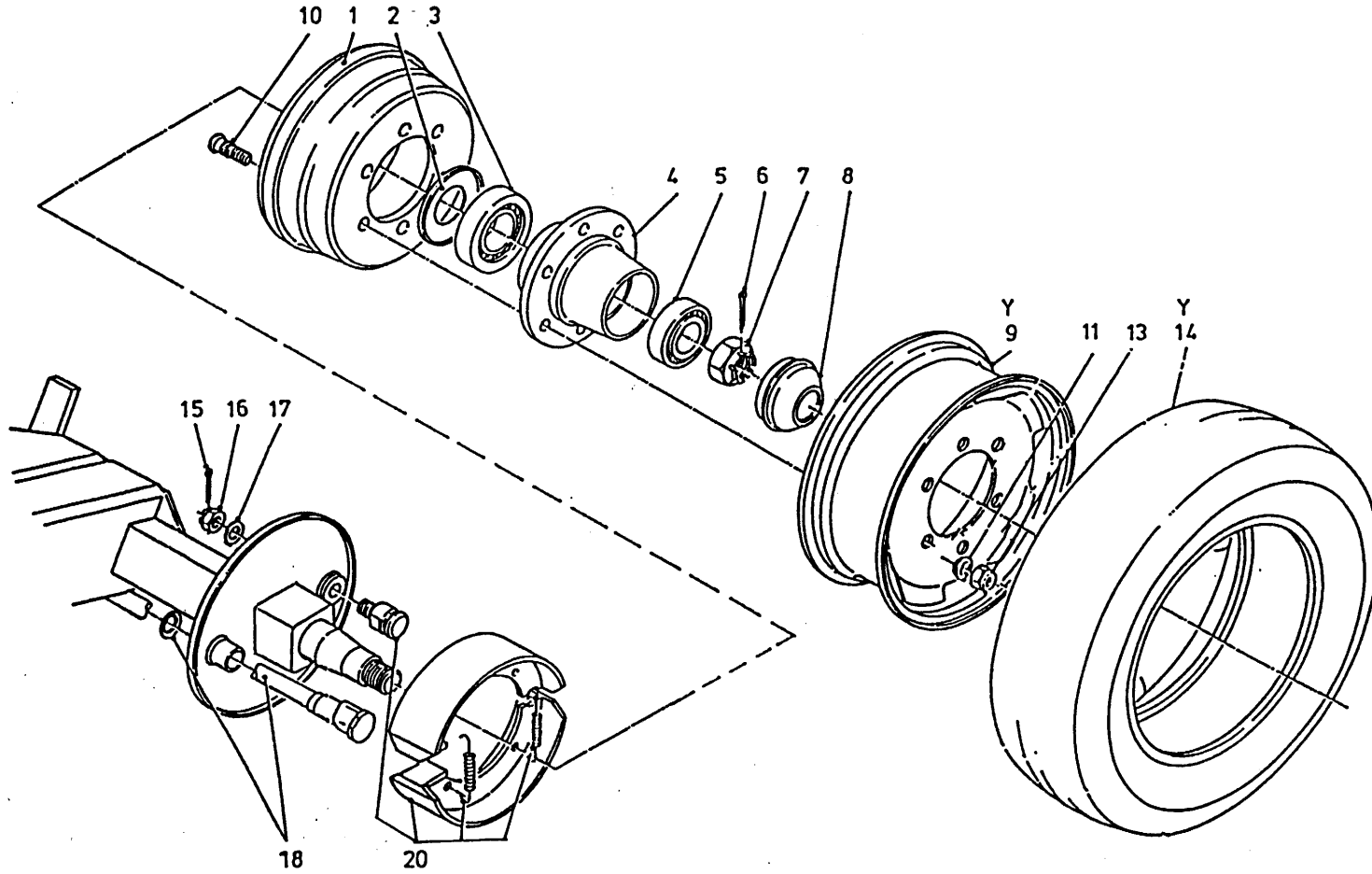


bestelnummer		ordernummer	
Num. à commander		Bestellnummer	
35	88239	4	Ø 5 x 40
36	85120	4	M20
37	85114	4	M14
38	X50124	4	
39	W50763	2	¼" 820 RH
40	X50354	2	
41	W50626	2	¼" 600 RH
42	50157	1	
43	X50355	2	
44	W52647	1	¾" 6600 RR
45	X50113	1	
46	53327	1	
47	31589	3	
48	32351	2	
49	85010	8	M10
50	80840	8	M8 x 40

92196

Afbeelding 3B : Rem en wiel
 Abbildung 3B : Bremse und Rad
 Picture 3B : Brakes with wheel
 Illustration 3B : Freinage et roue

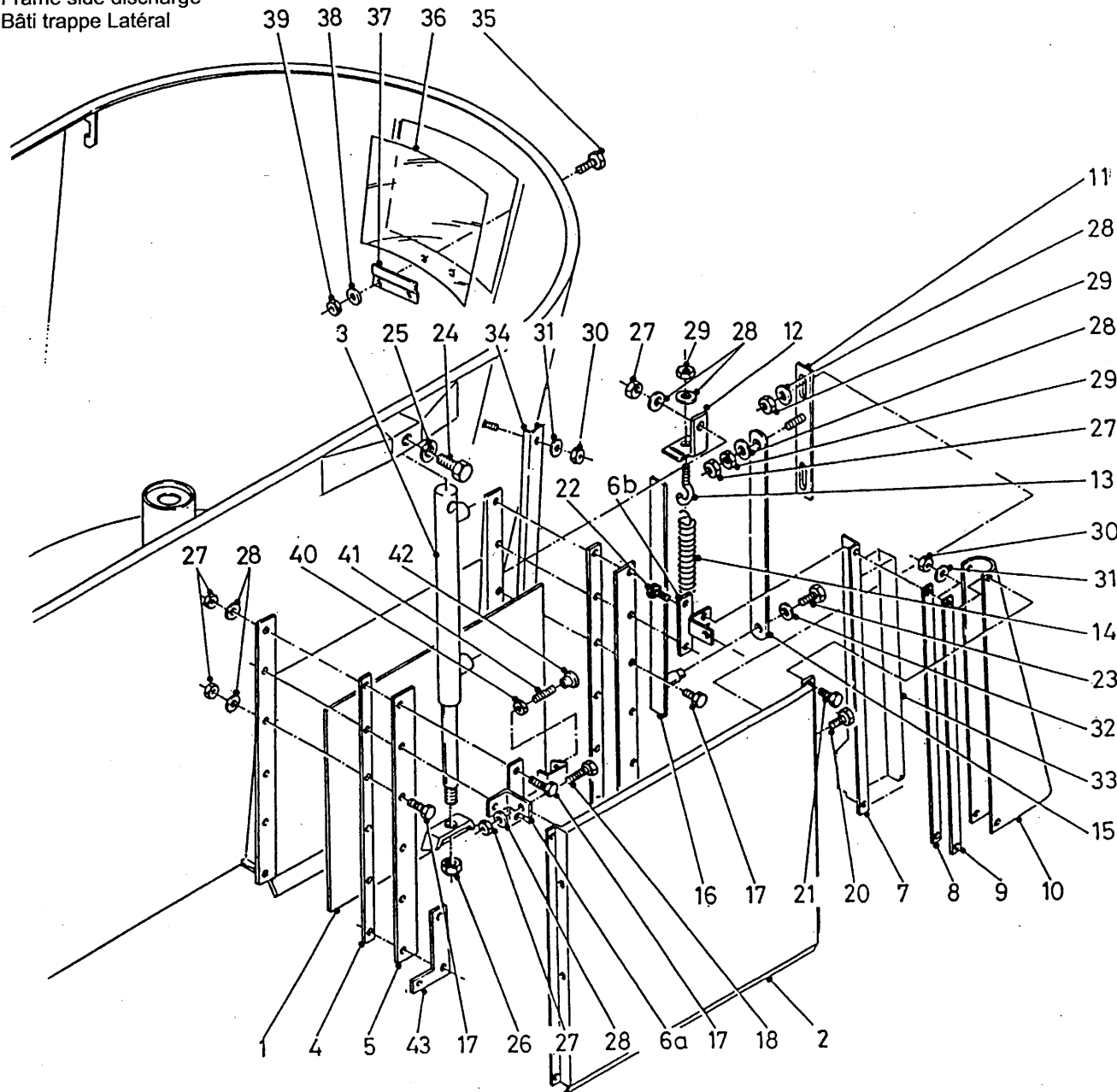
bestelnummer
 ordernummer
 Num. à commander
 Bestellnummer



1	90722	4	
2	90694	4	
3	70142	4	32217
4	90693	4	
5	70141	4	32214
6	90522	4	
7	90697	4	
8	90691	4	
9	90947	4	13 x 19.5
10	84941	32	M20 x 1.5 L=93
11	90699	32	
13	86933	32	M20 x 1.5 H=20
14	90907	4	445/45 - 19.5
15	90524	4	
16	90704	4	
17	90703	4	
18	90992	4	
20	90704	4	
Y	90946	4	445/45 R19.5

92196

Afbeelding 4 : Frame zijlossend
 Abbildung 4 : Rahmen seitliche Entleerung
 Picture 4 : Frame side discharge
 Illustration 4 : Bâti trappe Latéral



bestelnummer

ordernummer

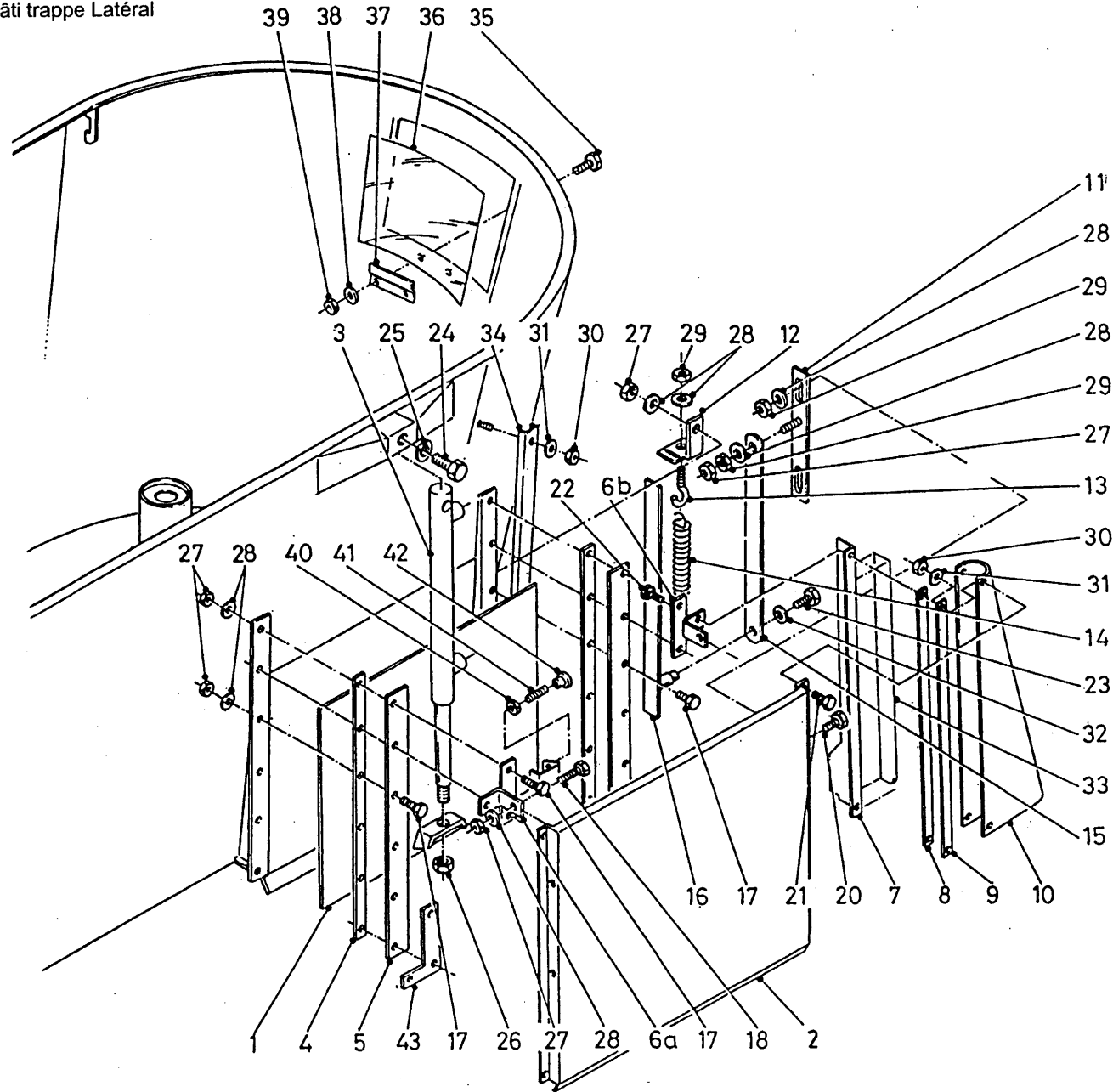
Num. à commander

Bestellnummer

1A	12898	1	Rechts
1B	12899	1	Links
2	12900	2	
3	51062	2	
4	28443	4	
5	28444	4	
6A	13046	2	Rechts
6B	13047	2	Links
7A	40638	1	Rechts
7B	40637	1	Links
8	28447	4	
9	28446	4	
10A	60393	2	
10B	60394	2	
11	12591	2	
12A	27475	1	Rechts
12B	27474	1	Links
13	84174	2	M10 x 80 x 14
14	65021	2	
15	28448	2	
16	12604	2	
17	81060	10	M10 x 60
18	81050	4	M10 x 50
19	81045	14	M10 x 45
20	81026	4	M10 x 25
21	80821	8	M8 x 20
22	80831	4	M8 x 30
23	80812	2	M8 x 12
24	81690	2	M16 x 90
25	85116	2	M16
26	86216	2	M16
27	86210	34	M10
28	85110	36	M10
29	86208	4	M10

92196

Afbeelding 4 : Frame zijlossend
 Abbildung 4 : Rahmen seitliche Entleerung
 Picture 4 : Frame side discharge
 Illustration 4 : Bâti trappe Latéral



bestelnummer

ordernummer

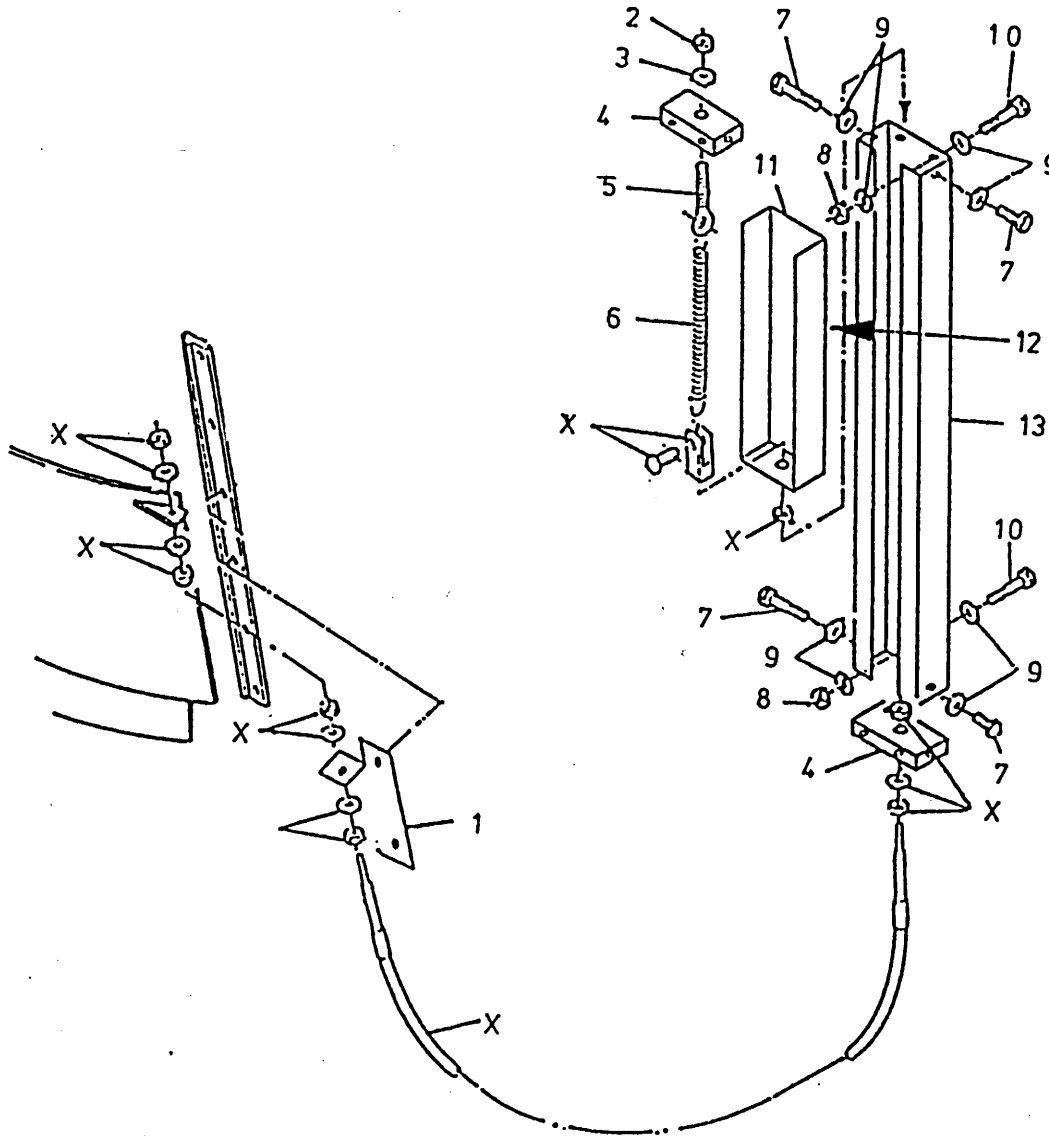
Num. à commander

Bestellnummer

30	86208	10	M8
31	85108	10	M8
32	85109	2	M8
33	91143	2	
34	40639	2	
35	80821	2	M8 x 20
36	60320	1	
37	40619	1	
38	85108	2	M8
39	86208	2	M8
40	86106	1	M6
41	84947	2	M6 x 100
42	60368	2	
43	13041	4	

92196

Afbeelding 5 : Standmelder doseerschuiif
 Abbildung 5 : Dosierschieber Anzeiger
 Picture 5 : Slide position indicator
 Illustration 5 : Indicateur de la trappe de dosage



bestelnummer

ordernummer

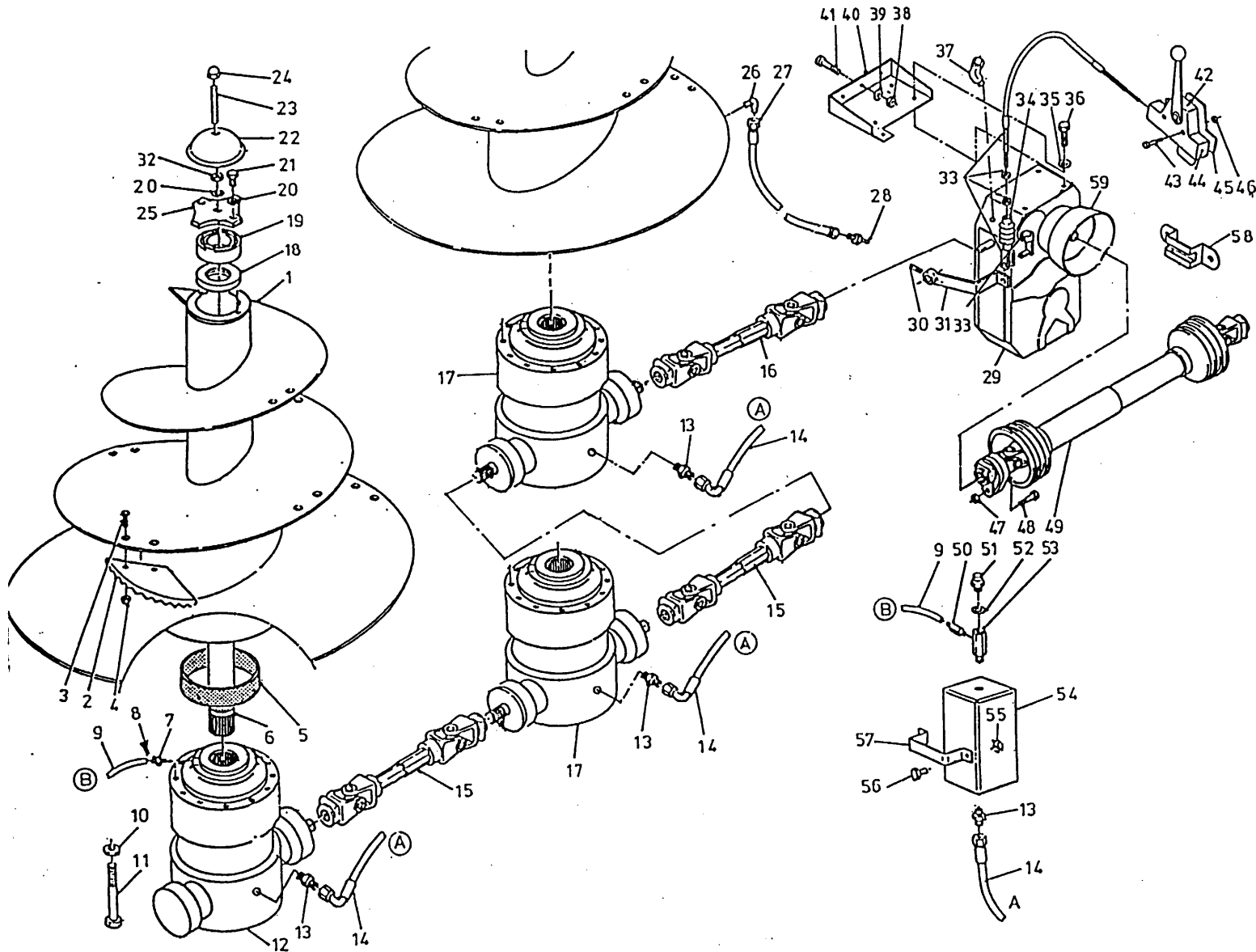
Num. à commander

Bestellnummer

1	27724	1	
2	86110	1	M10
3	85110	1	M10
4	27702	2	
5	84174	1	
6	65075	1	
7	80612	4	M6 x 12
8	86206	4	M6
9	85106	10	M6
10	80665	2	M6 x 65
11	12891	1	
12	91143	1	
13	40597	1	
X	79095	1	L=6650

92196

Afbeelding 6A : Aandrijving en mengvijzel
 Abbildung 6A : Schnecke und Antrieb
 Picture 6A : Auger and drive system
 Illustration 6A : Vis et système d'entraînement

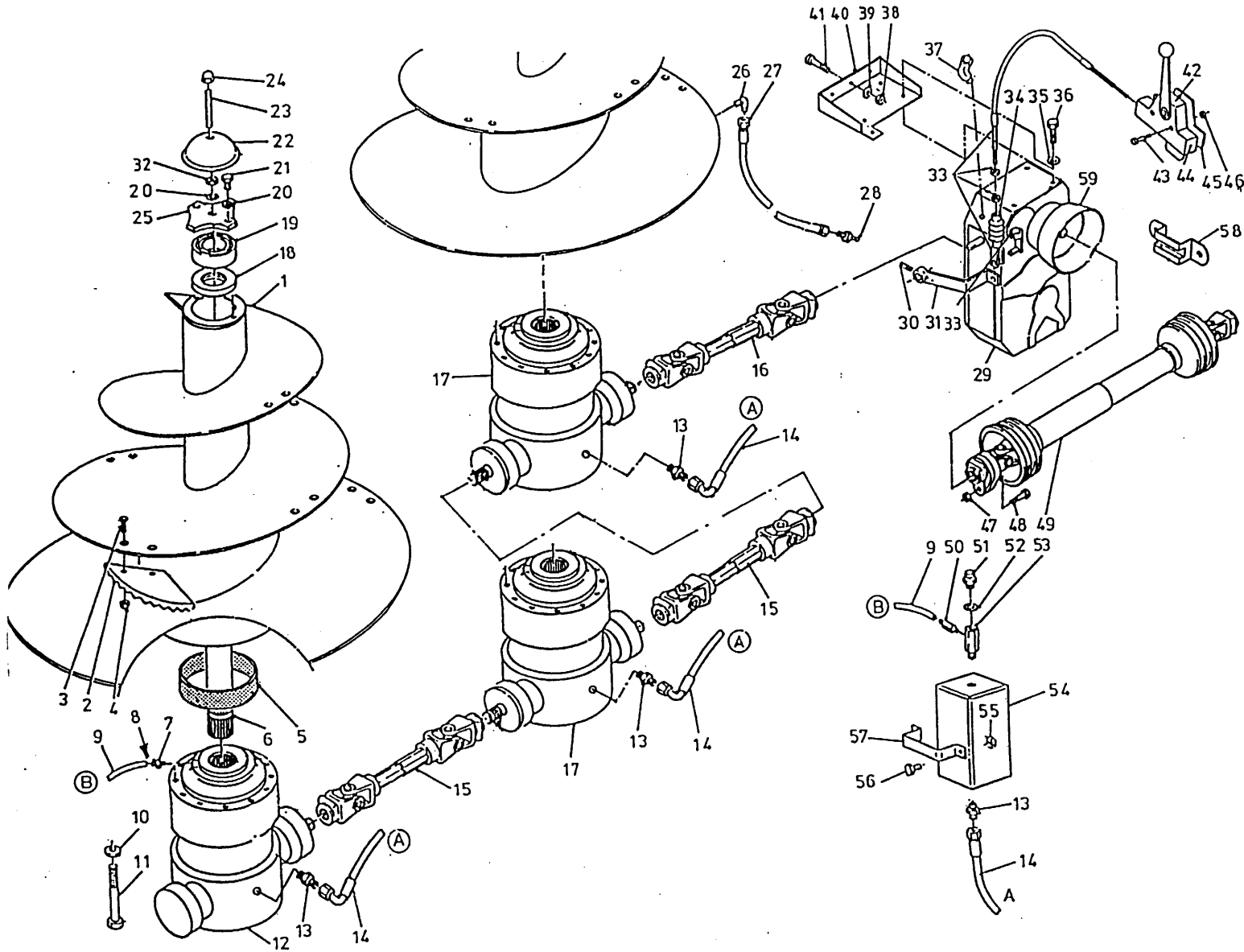


bestelnummer
 ordernumber
 Num. à commander
 Bestellnummer

1	13133	3	
2	31841	21	
3	84121	42	M16 x 45 10.9
4	86216	42	M16
5	51867	3	
6	32223	3	
7	50287	3	
8	50278	3	Ø8
9A	52675	1	Ø8 L=3000
9B	52676	1	Ø8 L=4600
9C	52685	1	Ø8 L=7200
10	85014	54	M14
11	84487	54	M14 x 140
12A	94095	1	→ 01
12B	94115	1	-> 02
13	X50112	6	
14A	W50665	1	3/8" 1850 RH
14B	W52684	1	3/8" 3700 RH
14C	W52631	1	3/8" 5400 RH
15	94107	2	1 1/4"-20 / 1 1/4"-20
16A	94002	1	1 1/4"-20 / 1 1/4"-6
16B	94168	1	1 1/4"-20 / 1 1/4"-20
17A	94096	2	→ 01
17B	94119	2	-> 02
18	70163	3	
19	70162	3	
20	85016	9	M16
21	81626	6	M16 x 25
22	29299	3	
23	84072	3	M16 x 120
24	86937	3	M16
25	29298	3	
26	50107	3	
27A	50957	1	1/4" 1520 RR
27B	52678	1	1/4" 3900 RR
27C	52683	1	1/4" 5800 RR

92196

Afbeelding 6A : Aandrijving en mengvijzel
 Abbildung 6A : Schnecke und Antrieb
 Picture 6A : Auger and drive system
 Illustration 6A : Vis et système d'entraînement

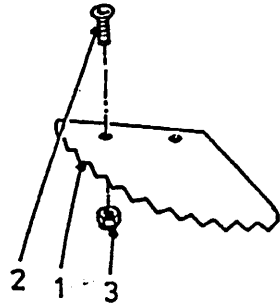


bestennummer	ordernummer	Num. à commander	Bestellnummer
28	89518	3	
29A	94092	1	1 3/4" - 6 → 01
29B	94167	1	1 3/4" - 20 → 02
30	88030	1	Ø6 x 30
31	12235	1	
32	86116	3	M16
33	79099	1	L=3750
34	90280	1	
35	85114	4	M14
36	81430	4	M14 x 30
37	50276	1	
38	86216	3	M16
39	85116	3	M16
40	12428	1	
41	81641	3	M16 x 40
42	91336	1	
43	80630	2	M6 x 30
44	94042	1	
45	10525	1	
46	86206	2	M6
47	86210	1	M10
48	81060	1	M10 x 60
49	94112	1	
50	50285	3	
51	90567	3	
52	85215	3	
53	50176	3	
54	90904	3	
55	86208	3	M8
56	80831	3	M8 x 30
57	28845	3	
58	20199	1	

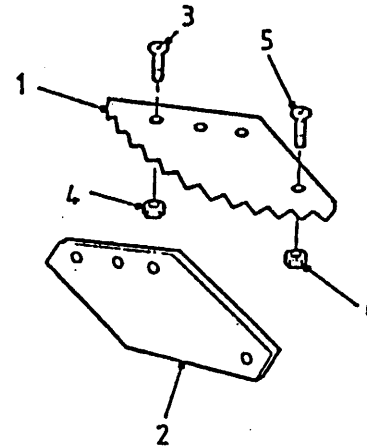
92196

Afbeelding 6B : Vijzelmessen
 Abbildung 6B : Schneckenmesser
 Picture 6B : Auger knives
 Illustration 6B : Couteaux

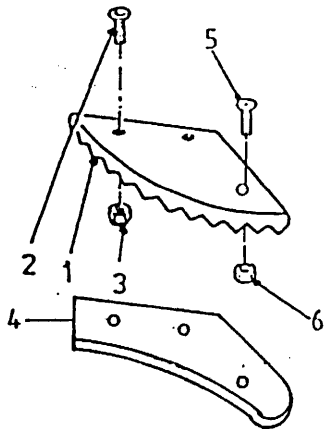
Standaard L=350



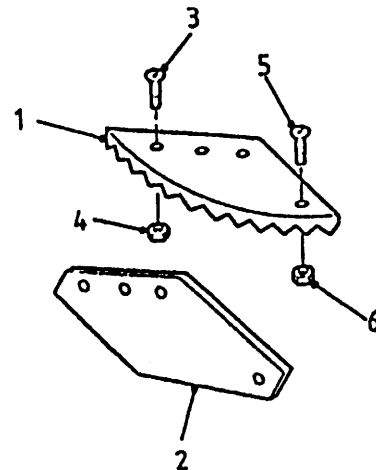
Standaard L=550



L=350 + T.C



L=550 + TC



bestelnummer
 ordernummer
 Num. à commander
 Bestellnummer

Standaard (L=350)

1	31841	1	
2	84121	2	M16 x 45
3	86216	2	M16

L= 350 + TC

1	31841TC	1	
2	84206	2	M16 x 60
3	86216	2	M16
4	29291	1	
5	84125	1	M8 x 25
6	86208	1	M8

L= 550

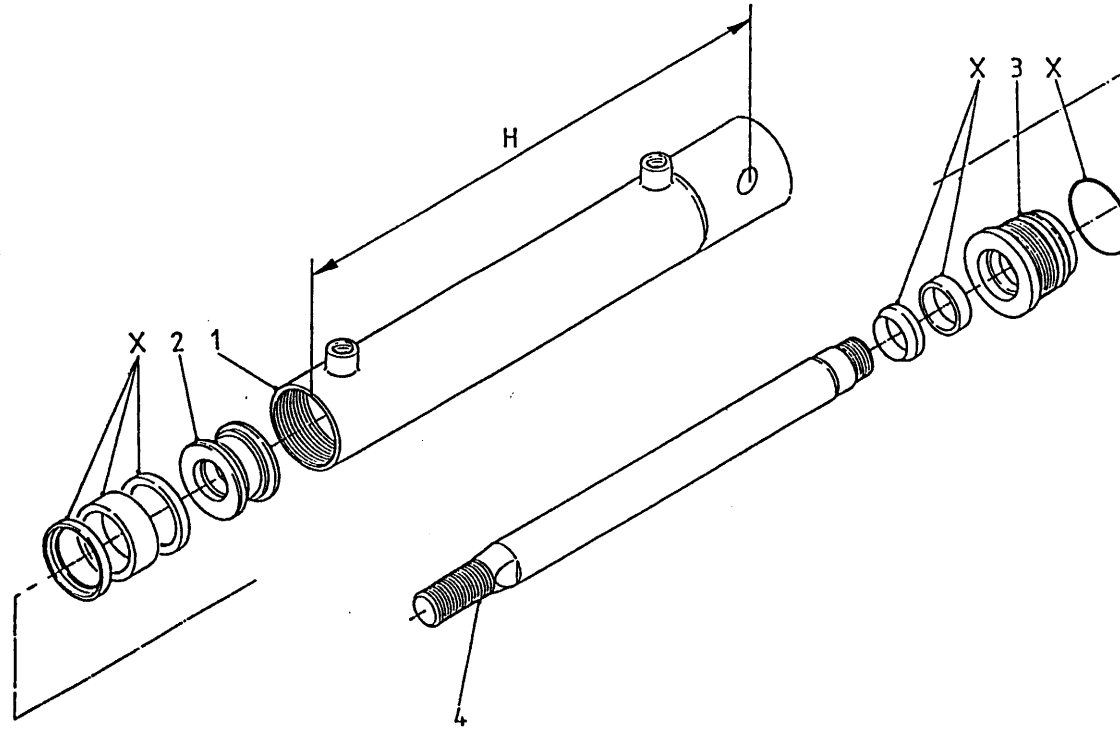
1	31639	1	
2	31640	1	
3	84206	3	M16 x 60
4	86216	3	M16
5	84125	1	M8 x 25
6	86208	1	M8

L = 550 + TC

1	31639TC	1	
2	31640	1	
3	84206	3	M16 x 60
4	86216	3	M16
5	84125	1	M8 x 25
6	86208	1	M8

92196

Afbeelding 7 : Doseerkepcilinder
Abbildung 7 : Auswurfschieberzylinder
Picture 7 : Slide cilinder
Illustration 7 : Porte de dosage: cylindre hydraulique



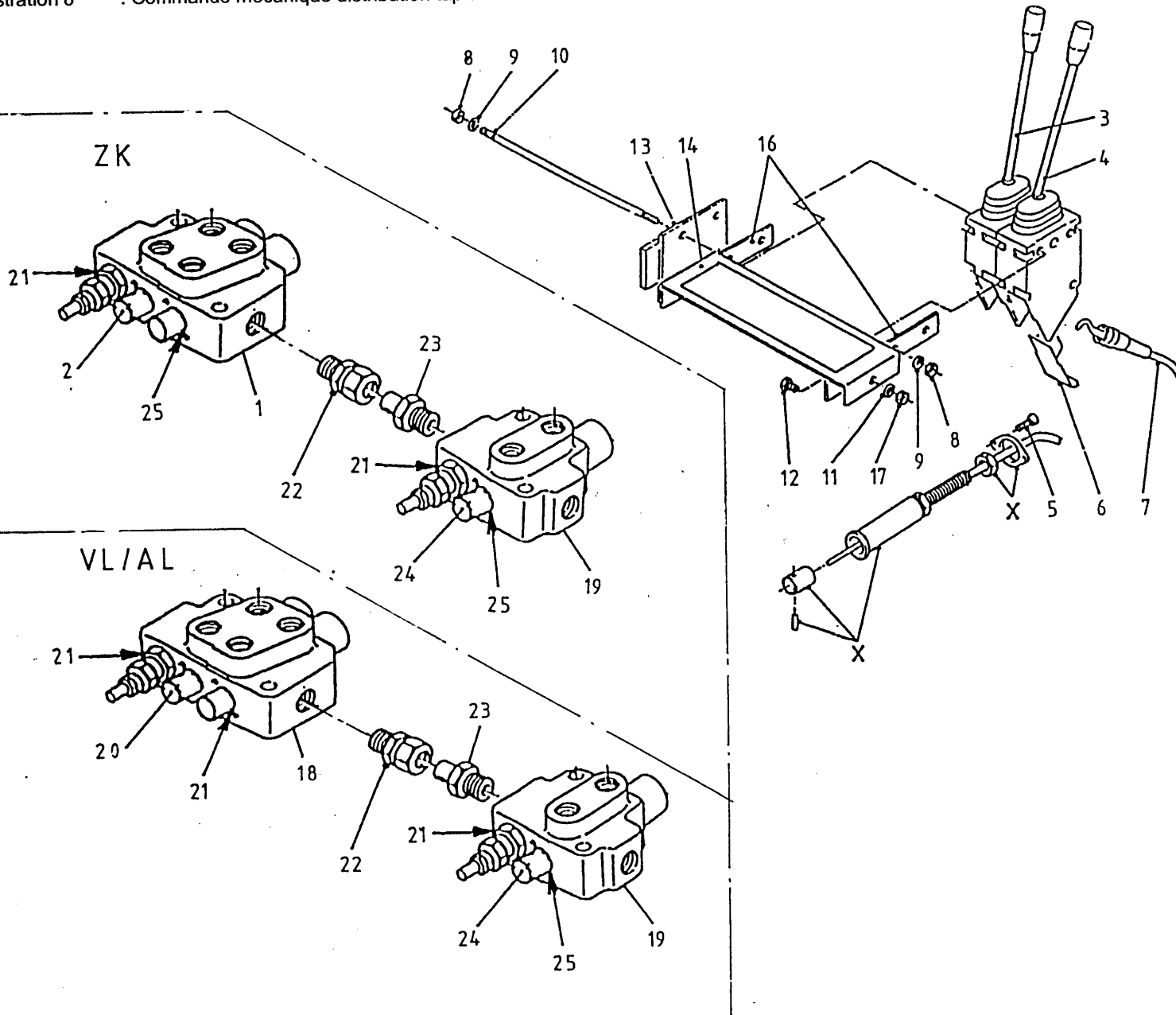
bestelnummer
ordernumber
Num. à commander
Bestellnummer

51062

1	11600	1
2	30860	1
3	31460	1
4	31459	1
X	05309	1

92196

Afbeelding 8 : Mechanische bediening
 Abbildung 8 : Mechanische Fernbedienung
 Picture 8 : Mechanical remote control
 Illustration 8 : Commande mécanique distribution tapis

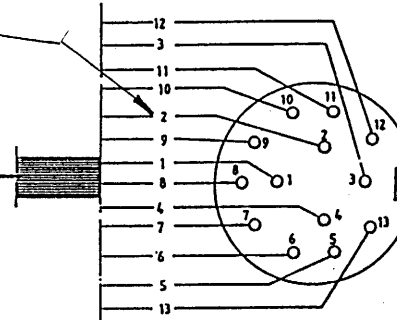
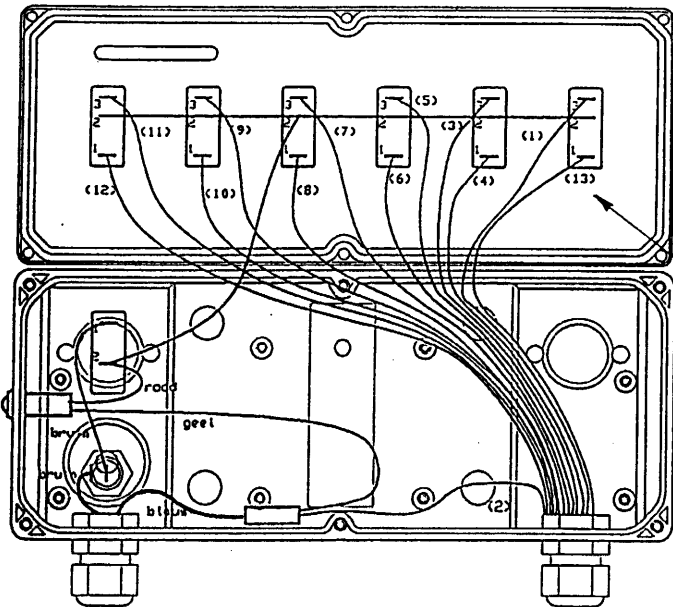
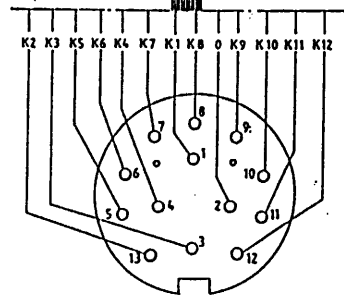
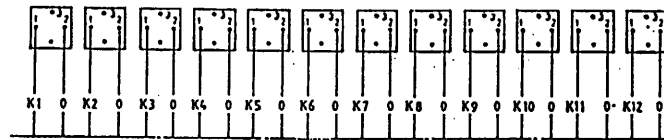
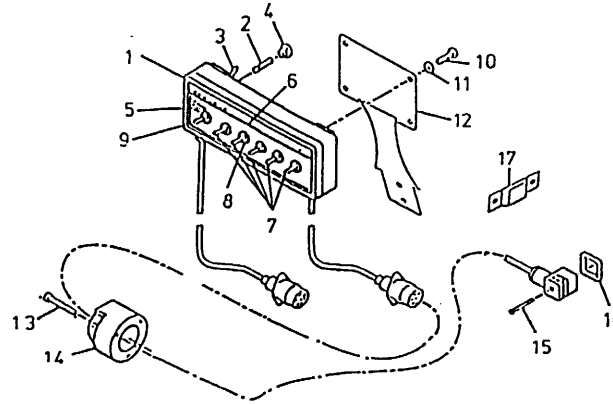
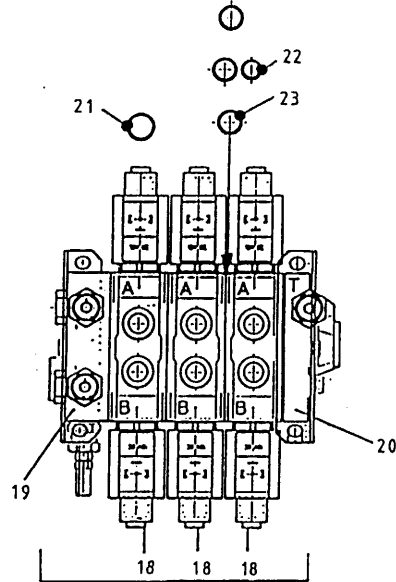


bestelnummer
 ordernummer
 Num. à commander
 Bestellnummer

1	53267	1	2H ZK
2	53430	2	
3	53099	1	
4	53129	6	15° L
5	84480	3	M6 x 45
7	79086	6	L=3500
8	86206	6	M6
9	85106	3	M6
10	84047	2	M6 x 160
11	85108	2	M8
12	80816	2	M8 x 16
13	11139	1	
14	22658	1	
16	22244	2	
17	86208	2	M8
18	53292	1	2H VL/AL
19	53002	1	
20	53436	1	
21	78128	6	17.86 x 2.62/70
22	50102	1	
23	50132	1	
24	53445	1	
25	78126	2	15.08 x 2.62/70
X	53231	2	

92196

Afbeelding 9 : Elektrische bediening
 Abbildung 9 : Elektrische Fernbedienung
 Picture 9 : Electrical remote
 Illustration 9 : Commande électrique



bestelnummer
 ordernummer
 Num. à commander
 Bestellnummer

1	98195	1	
2	98053	1	
3	98054	1	
4	98052	1	
5	98051	1	
6	91015	1	
7	98113	5	
8	98056	6	
9	98206	1	
10	80610	4	M6 x 10
11	85106	4	M6
12	40420	1	
13	84476	3	M5 x 30
14	98147	1	
15	84711	6	M3 x 35
16	60180	6	
17	24644	1	
18	53280	3	
19	53283	1	
20	83284	1	
21	78062	12	18.77x2.62/70
22	78133	3	14 x 1.78/70
23	78122	9	17.17x1.78/70

92196

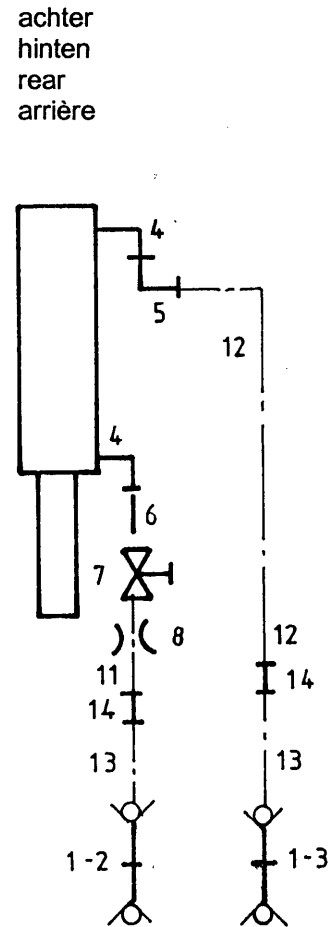
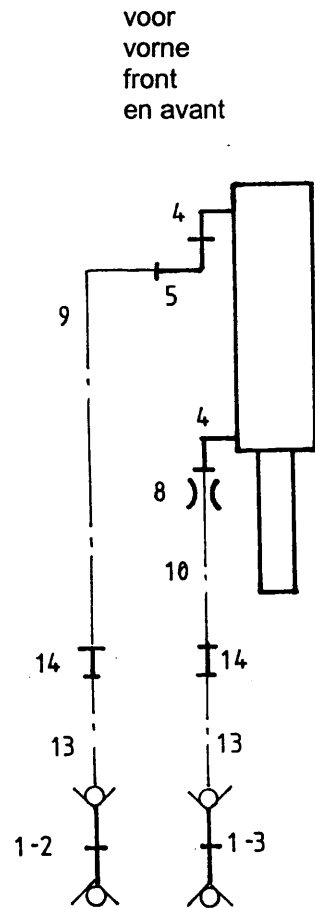
Afbeelding 10A : Slangenschema directe aansluiting ZK
 Abbildung 10A : Hydraulikplan direktanschluß ZK
 Picture 10A : Hydraulics direkt connection
 Illustration 10A : Distribution a trappe: système hydraulique

bestelnummer

ordernummer

Num. à commander

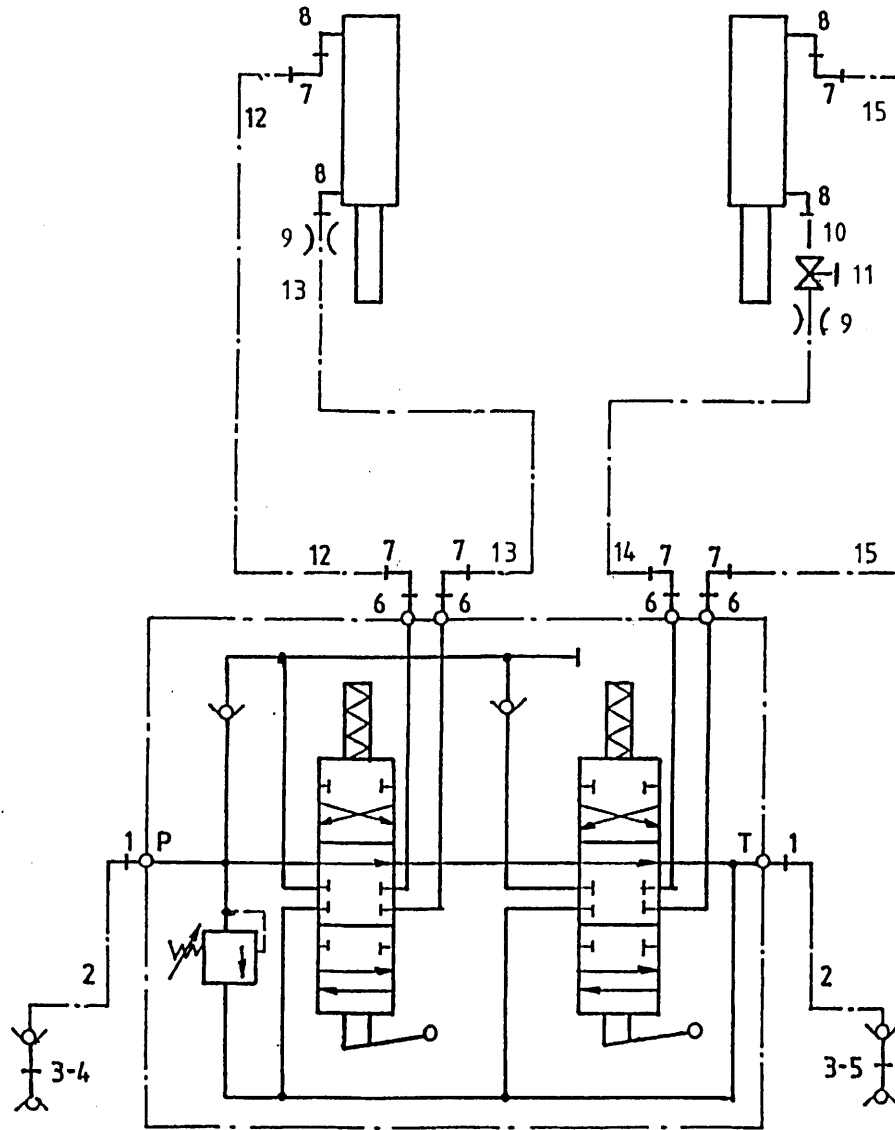
Bestellnummer



1	53016	6	
2	53303	3	Rood
3	53326	3	Blauw
4	X50107	6	
5	X50147	6	
6	52654	1	L=40
7	51027	1	
8	30726	3	Ø0,8
9	W52640	1	¼" 8500 RR
10	W52643	1	¼" 9400 RR
11	W52645	1	¼" 5250 RR
12	W50745	1	¼" 4600 RR
13	W50854	6	¼" 2700 RR
14	X50135	6	

92196

Afbeelding 10B : Slangenschema mechanische bediening ZK
 Abbildung 10B : Hydraulikplan mechanische Bedienung ZK
 Picture 10B : Hydraulic scheme of mechanical control ZK
 Illustration 10B : Schéma hydraulique de la commande mécanique ZK



bestelnummer

ordernumber

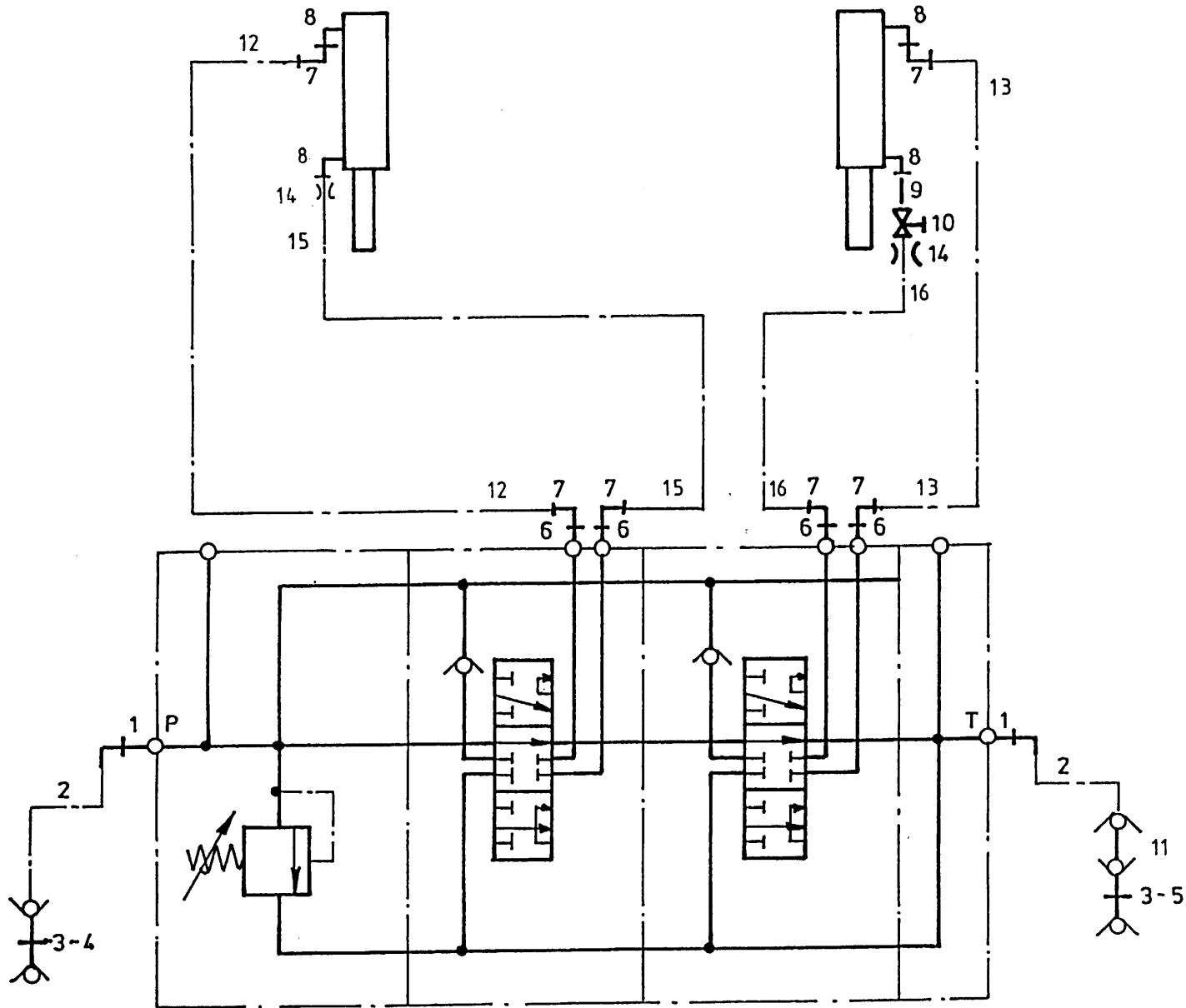
Num. à commander

Bestellnummer

1	X50102	2	
2	W50768	2	½" 3000 RH
3	53301	2	
4	53303	1	Rood
5	53326	1	Blauw
6	X50114	4	
7	X50147	6	
8	X50107	4	
9	30726	2	Ø0,8
10	52654	1	L=40
11	51027	1	
12	W52640	1	½" 8500 RR
13	W52643	1	½" 9400 RR
14	W52645	1	½" 5250 RR
15	W50745	1	½" 4600 RR

92196

Afbeelding 10C : Slangenschema elektrische zijlossend ZK
 Abbildung 10C : Hydraulikplan elektrische Entleerung seitlich
 Picture 10C : Hydraulic scheme with electrical side delivery ZK
 Illustration 10C : Schéma hydraulique de la trappe latéral ZK



bestelnummer

ordernummer

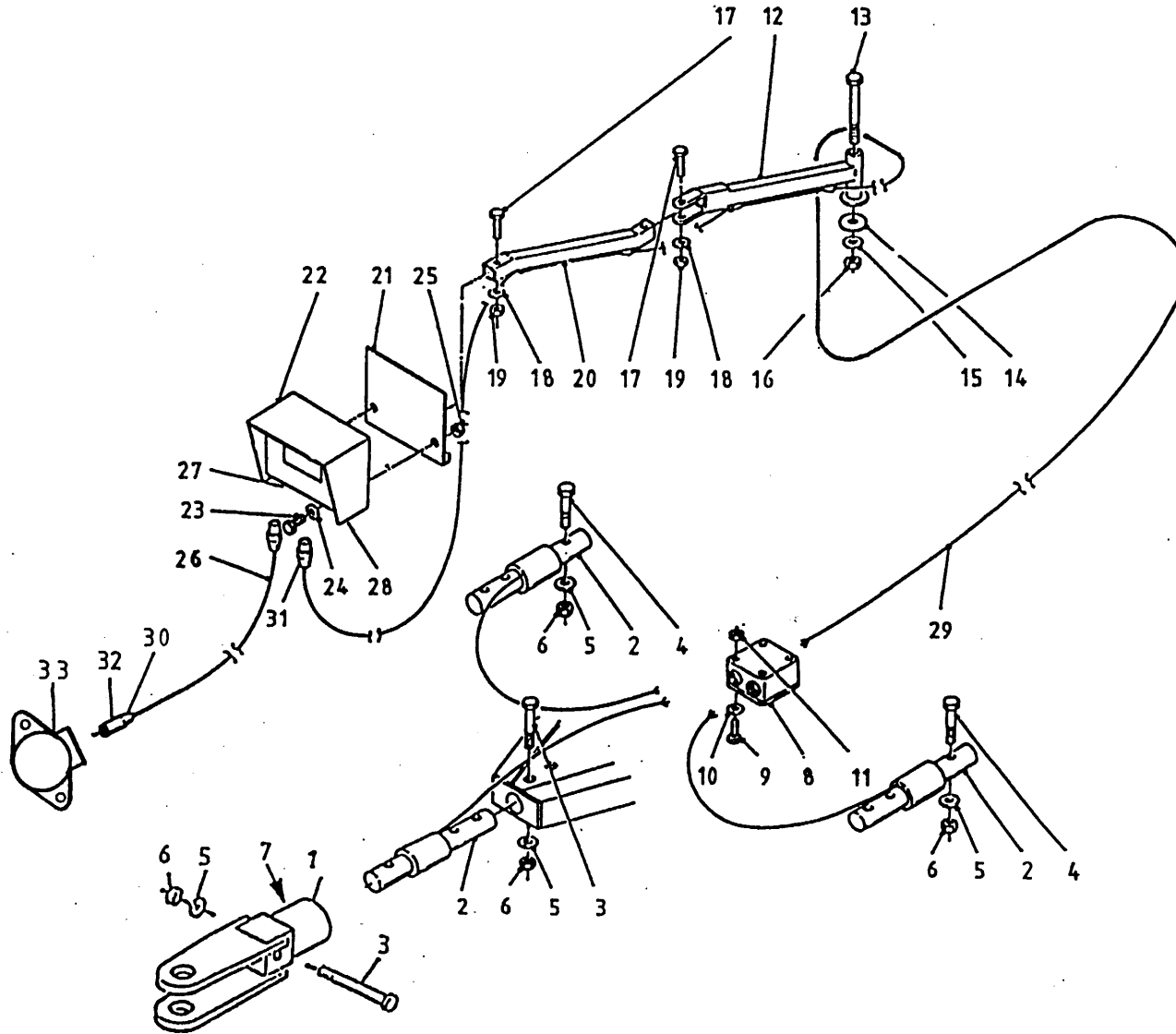
Num. à commander

Bestellnummer

1	X50102	2	
2	W50643	2	½" 2500 RH
3	53301	2	
4	53303	1	Rood
5	53326	1	Blauw
6	X50114	4	
7	X50147	4	
8	X50107	4	
9	52654	1	L=40
10	51027	1	
11	53273	1	
12	W52640	1	¼" 8500 RR
13	W50745	2	¼" 4600 RR
14	30726	2	Ø,8
15	W52643	1	¼" 9400 RR
16	W52645	1	¼" 5250 RR

92196

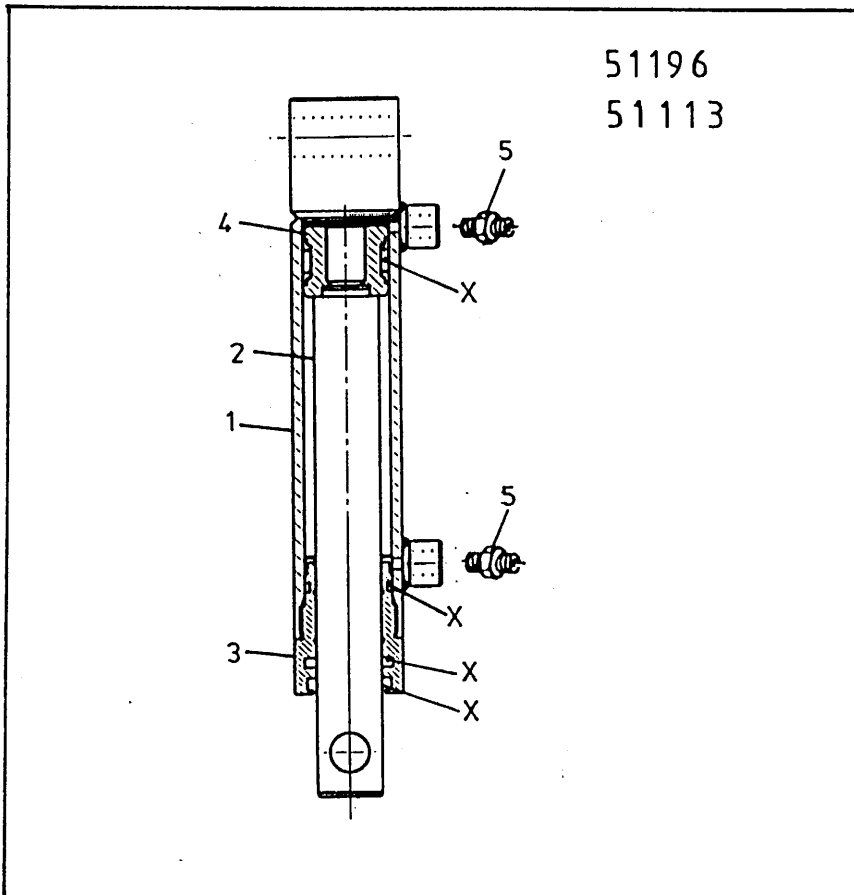
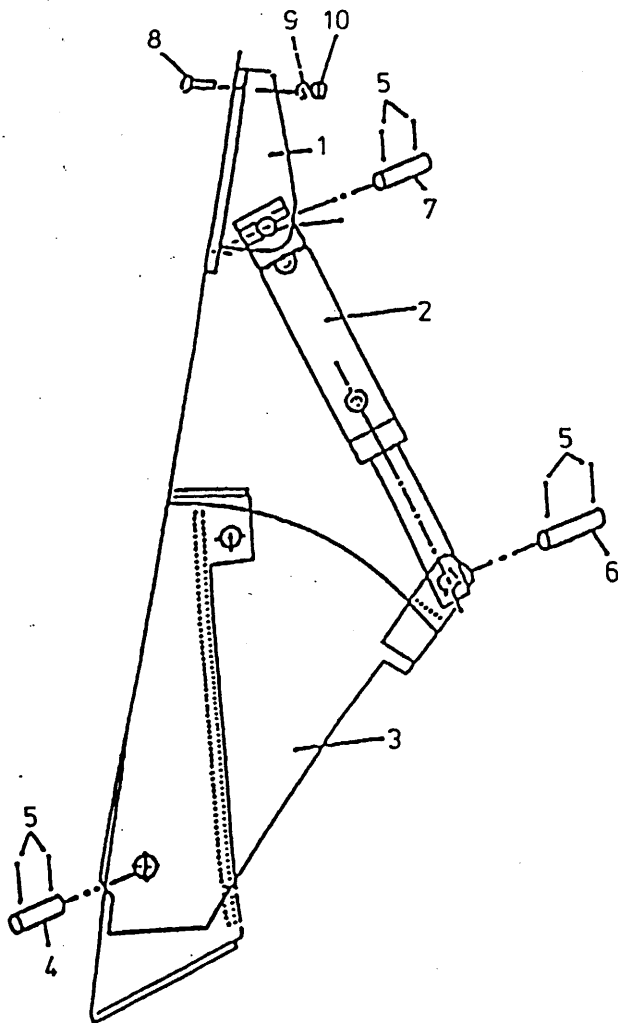
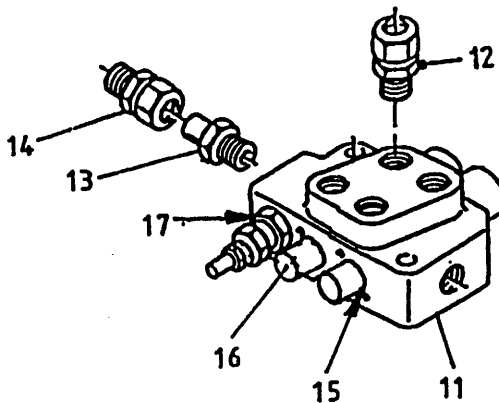
Afbeelding 11 : Elektronische weeginstallatie
 Abbildung 11 : Elektronische Waage
 Picture 11 : Electronic weighing system
 Illustration 11 : Pèse électronique



bestelnummer	ordernummer	Num. à commander	Bestellnummer
1	13151	1	
2	90841	3	Ø88,9 3½"
3	85420	2	M24 x 200 12.9
4	82418	2	M24 x 180 12.9
5	85124	4	M24
6	86224	4	M24
7	91216	1	
8	90482	1	
9	84445	4	M5 x 20
10	85105	4	M5
11	86505	4	M5
12	12037	1	
13	81653	1	M16 x 150
14	60298	1	
15	85116	1	M16
16	86216	1	M16
17	81060	2	M10 x 60
18	85110	2	M10
19	86210	2	M10
20	12036	1	
21	12038	1	
22A	94007	1	EZ 2000
22B	90977	1	EZ 2000 View
22C	94075	1	EZ 3200
22D	94076	1	EZ 3200 View
23	80621	2	M6 x 20
24	85106	2	M6
25	86506	2	M6
26	90483	1	
27	05389	1	Female
28	05390	1	Female
29	90719	1	
30	98237	1	
31	98218	1	
32	98238	1	
33	98239	1	

92196

Afbeelding 12 : Hydraulische bediening conrames
 Abbildung 12 : Hydraulikplan Fernbedienung Kontramesser
 Picture 12 : Hydraulic control of counter knife
 Illustration 12 : Commande hydraulique de la contre-lame



bestelnummer
 ordernummer
 Num. à commander
 Bestellnummer

1	12043	1	
2	51113	1	H=120
3	12039	1	
4	25332	1	
5	88239	6	Ø5 x 40
6	25607	1	
7	25606	1	
8	84808	2	M12 x 30
9	85112	2	M12
10	86212	2	M12
11	53267	8	18.77 x 1.78/70
12	X50114	2	14 x 1.78/70
13	50132	6	17.17 x 1.78/70
14	50102	2	
15	78126	3	M6 x 275
16	53430	2	
17	78128	1	17.86x2.62/70

51196 (H=120)

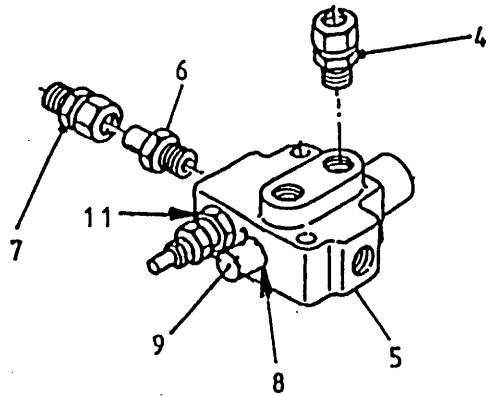
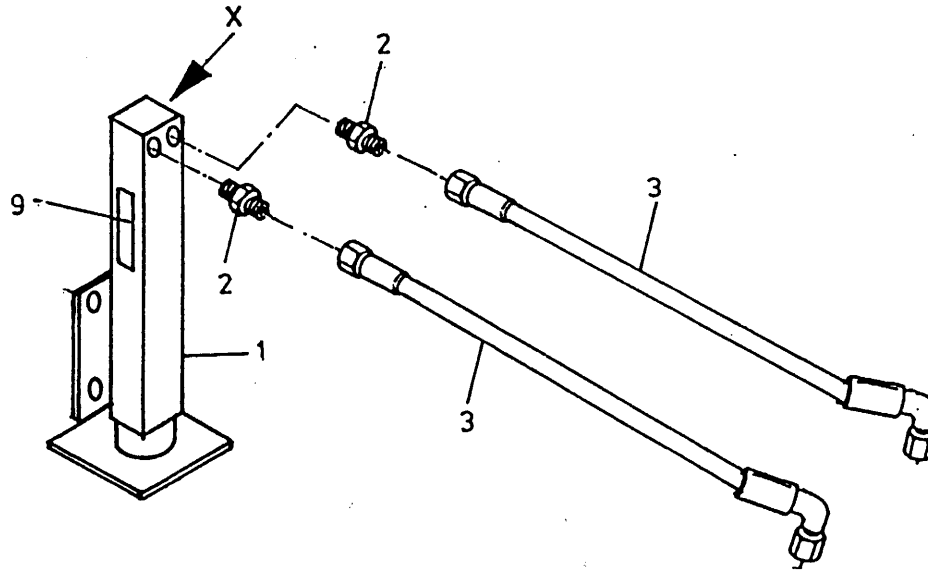
1	12483	1	
2	32207	1	
3	31460	1	
4	30860	1	
5	X50104	2	
X	05309	1	

51113 H=120

1	12028	1	
2	31757	1	
3	31460	1	
4	30860	1	
5	X50104	2	
X	05309	1	

92196

Afbeelding 13 : Hydraulische steunpoot
 Abbildung 13 : Hydraulischer Stützfuß
 Picture 13 : Hydraulic support
 Illustration 13 : Béquille hydraulique

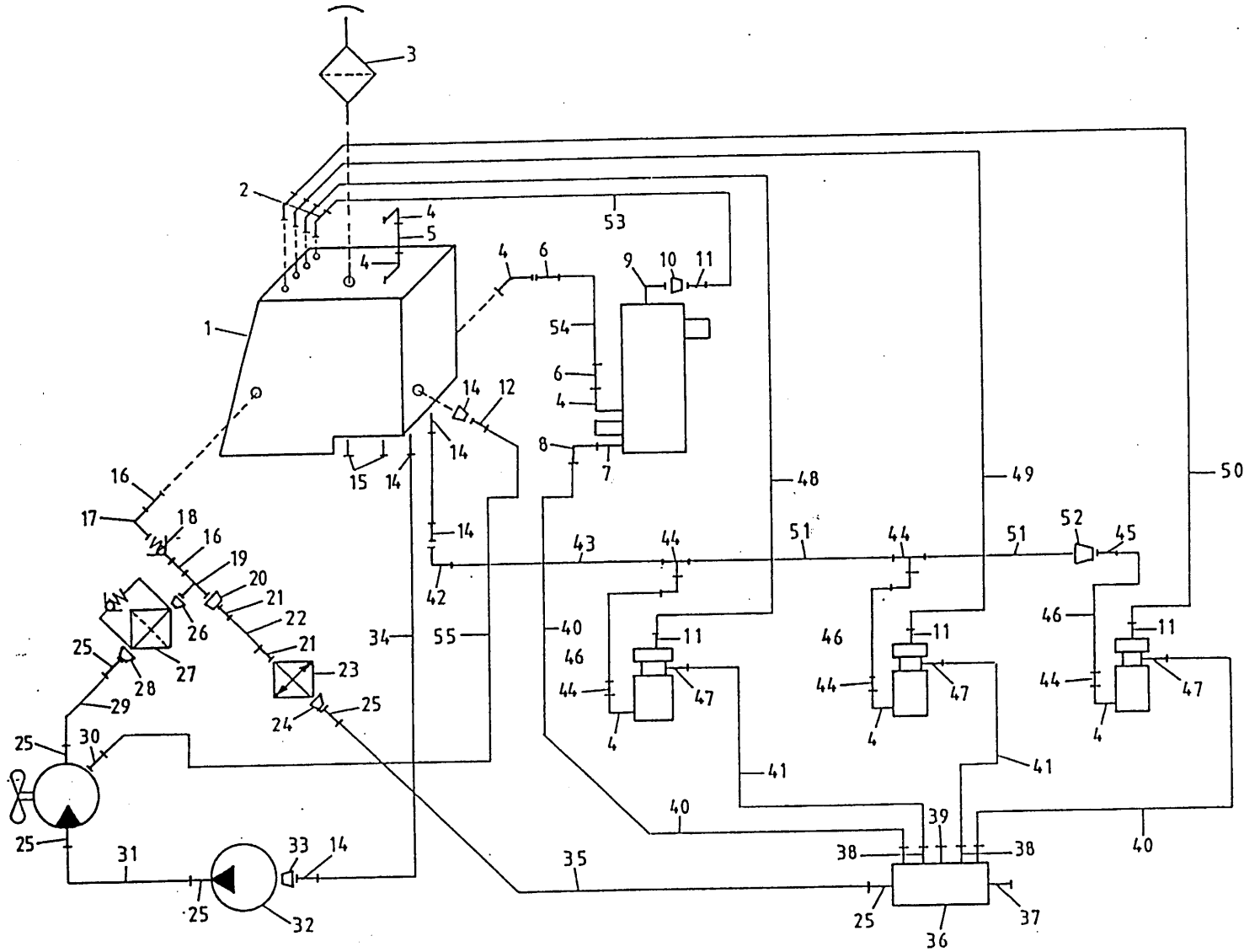


bestelnummer
 ordernumber
 Num. à commander
 Bestellnummer

1	12029	1	
2	X50124	2	
3	W50956	2	1/4" 4200 RH
4	X50114	2	
5	53002	1	
6	50132	1	
7	50102	1	
8	78126	2	15.08x2.62/70
9	53445	1	
10	91334	1	
11	78128	1	17.86x 2.62/70
X	05432	1	

92196

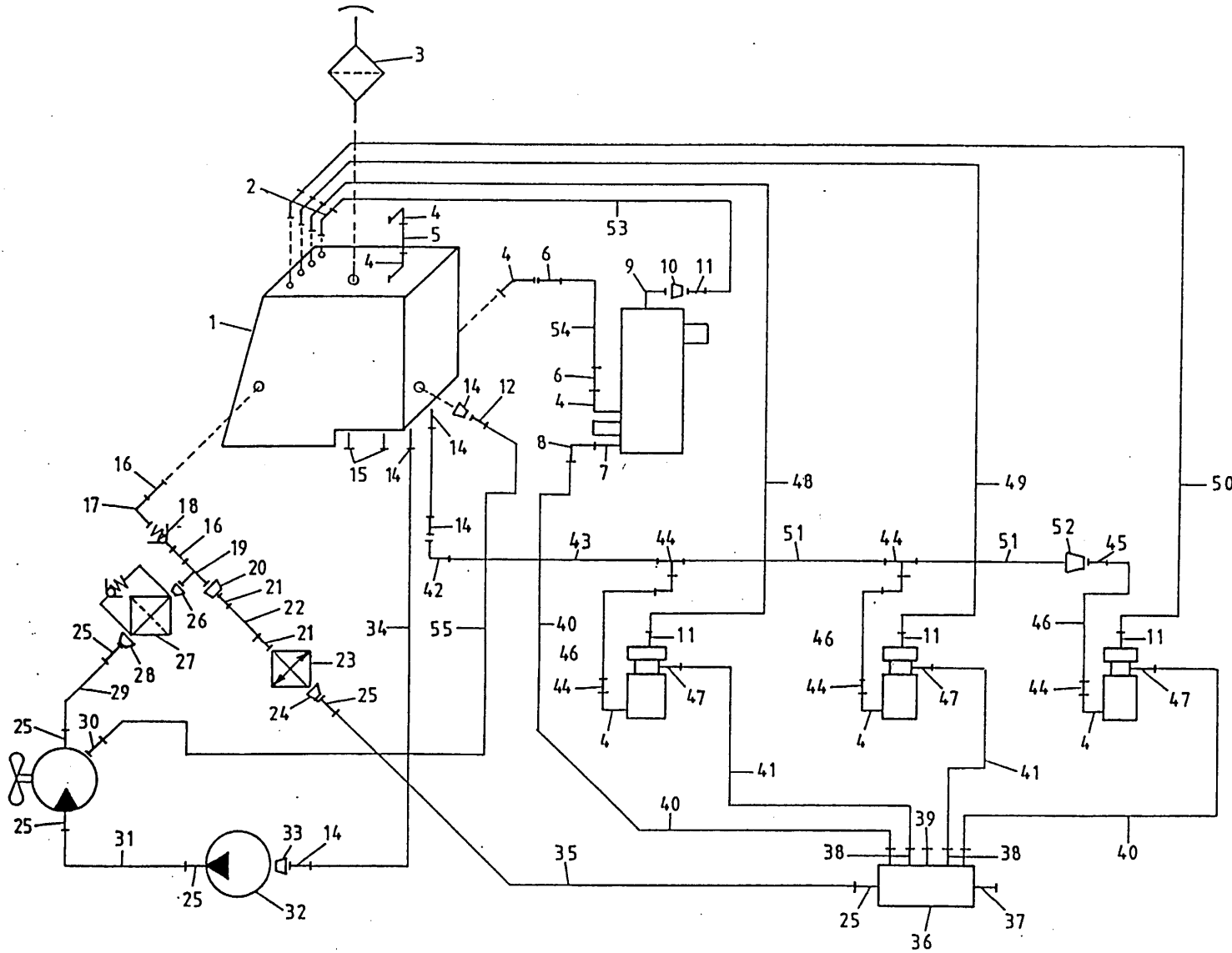
Afbeelding 14 : Koelsysteem
 Abbildung 14 : Kühlanlage
 Picture 14 : Cooling system
 Illustration 14 : Système de refroidissement



bestelnummer		
ordernumber		
Num. à commander		
Bestellnummer		
1	13219	1
2	50287	4
3	90187	1
4	50510	7
5	50978	1
6	83359	2
7	50116	1
8	50143	1
9	50515	1
10	50194	1
11	50286	4
12	50152	1
13	50202	1
14	53361	4
15	50529	2
16	50573	2
17	50513	1
18	53397	1
19	50524	1
20	50594	1
21	90983	1
22	52694	1
23	94154	1 23,4 cc GR3
24	50391	1
25	50257	6
26	50578	1
27	94147	1 5 bar
28	50537	1
29	52698	1
30	50202	1
31	52699	1
32	51221	1 51 cc
33	50585	1
34	52695	2
35	52697	1 ½"22L 3350 RR
36	32358	1
37	53362	1

92196

Afbeelding 14 : Koelsysteem
 Abbildung 14 : Kühlanlage
 Picture 14 : Cooling system
 Illustration 14 : Système de refroidissement

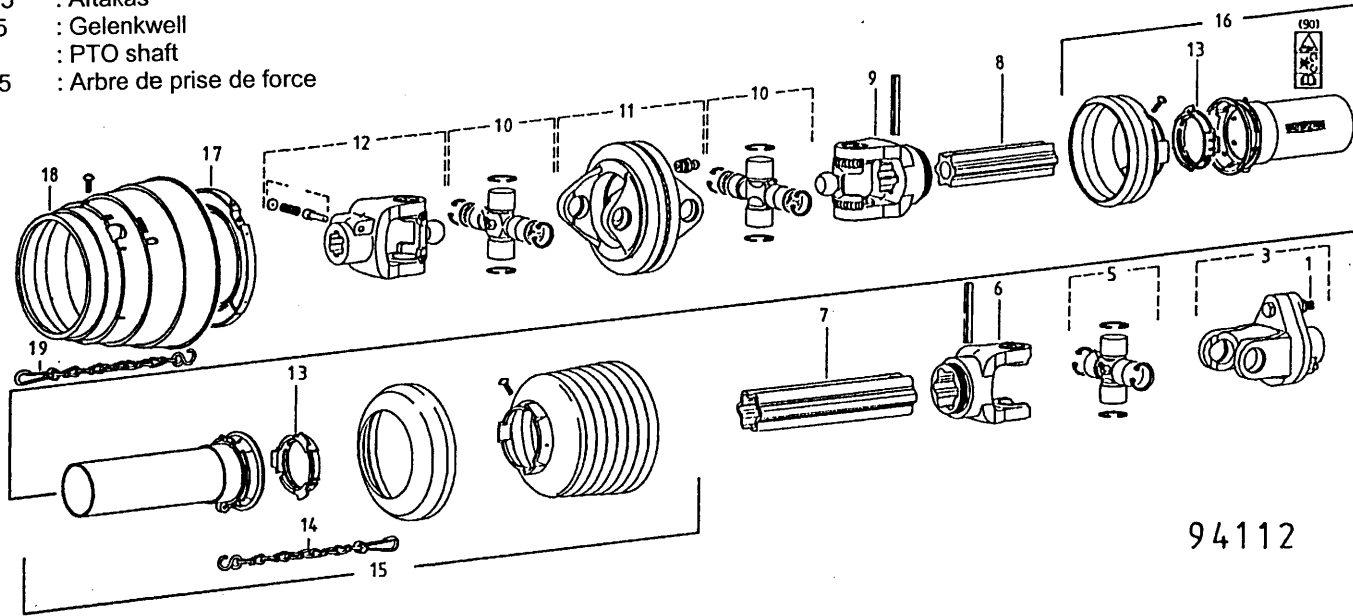


bestelnummer
 ordernumber
 Num. à commander
 Bestellnummer

38	50117	4	
39	53318	1	
40	50768	2	½"-15L 3000 RW
41	50643	2	½"-15L 2250 RH
42	50599	1	
43	50534	1	
44	50526	5	
45	53359	3	
46	50693	3	
47	50116	3	
48	52676	1	Ø8 L=4600
49	52700	1	Ø8 L=6100
50	52701	1	Ø8 L=8700
51	50533	2	
52	50589	1	
53	52673	1	Ø8 L=2000
54	50693	1	¾"2600 RR
55	50895	1	¼"300 RH

92196

Afbeelding 15 : Aftakas
 Abbildung 15 : Gelenkwel
 Picture 15 : PTO shaft
 Illustration 15 : Arbre de prise de force



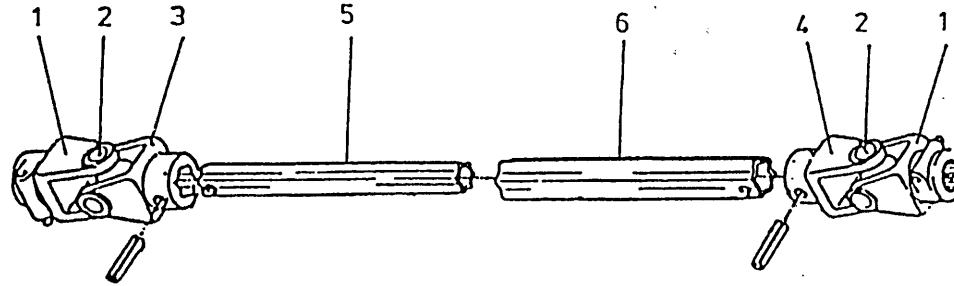
94112

bestelnummer
 ordernumber
 Num. à commander
 Bestellnummer

94112

1	80860	1	M10 x 60 8.8
3	94133	1	1 3/4" - 6
5	90914	1	
6	90915	1	
7	90916	1	
8	90923	1	
9	90924	1	
10	94085	2	
11	90925	1	
12	94036	1	1 3/8" - 21
13	90619	1	
14	90266	1	
15	94101	1	
16	94102	1	
17	94069	1	
18	94070	1	
19	94062	1	

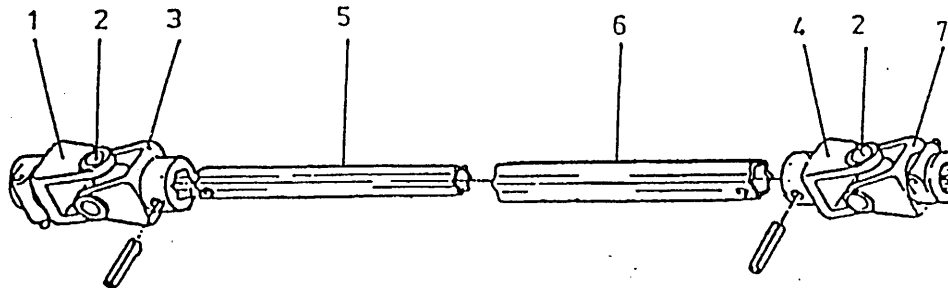
94107



94107 L=1050

1	90927	2	1 3/4"-20
2	90561	2	
3	90929	1	
4	94137	1	
5	94138	1	
6	90932	1	

94002



94002 L=850

1	90927	1	1 3/4"-20
2	90561	2	
3	94929	1	
4	94135	1	
5	94136	1	
6	90932	1	
7	94134	1	1 3/4"-6



Himmanweg 19
7575 BE Oldenzaal - Holland
Postbus 134
7570 AC Oldenzaal - Holland

e-mail: info@triolet.nl
<http://www.triolet.nl>

Tel.: 0541 - 57 21 21 / (+) 31 - 541 - 57 21 21
Fax: 0541 - 57 21 25 / (+) 31 - 541 - 57 21 25

Voor onderdelen / Für Ersatzteile / For spare parts / Pour pièces de
réchange

Tel.: 0541 - 57 21 36 / (+) 31 - 541 - 57 21 36
Fax: 0541 - 57 21 40 / (+) 31 - 541 - 57 21 40