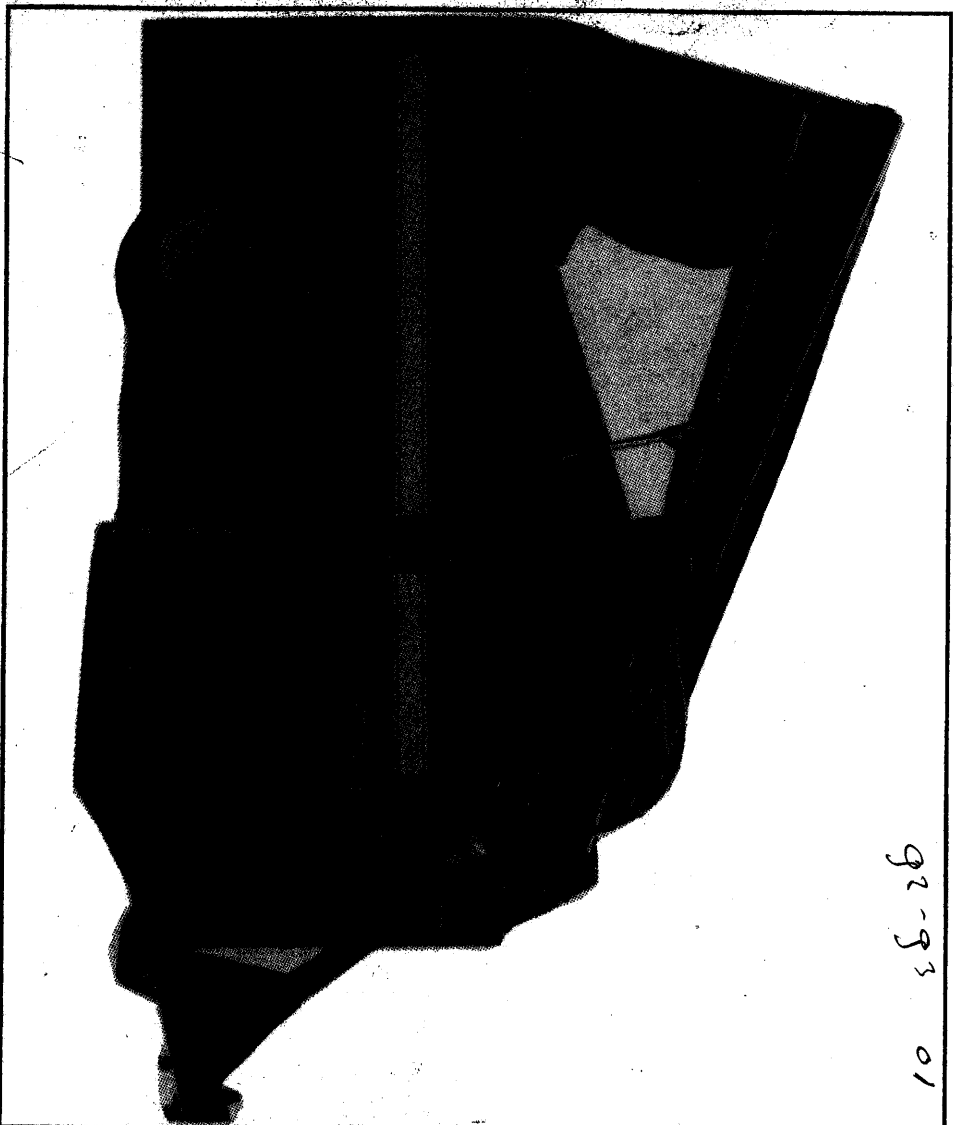


**TRIOLIET**

92-93

**Trioliet Mullos**  
**Uitkuildoseerwagen**  
**UKW 5000**

92-93 01



**Onderdelenlijst / Ersatzteilliste**  
**Sparepartlist / Liste de pièces de réchange**

Bestelnummer / Bestellnummer 92026 / 1

Geldig vanaf productieserie nr. / Gültig ab Prod. Series No.: 01

## INHOUDSOPGAVE

Sickers .....	1
Frame .....	2
Zijbeplating .....	3
Wielstel .....	4
Voorbeplating .....	5
Dissel .....	6
Aanvoerband .....	7
Opvoerband .....	8
Dwarshand .....	9
Laadrichting .....	10
Suijsysteem .....	11
Krabbord .....	12
Slangen snijbord .....	13
Snuurventielblok .....	14
Hydraulische slangen .....	15/16
Mechanische bediening .....	17
Elektrische bediening .....	18
Omkastng bediening .....	19
Mescilinder .....	20
Disselcilinder .....	21
Aanzet- en in trekcilinder .....	22
Wielarmcilinder .....	23
Elektronisch weegsysteem .....	24
Pomp unit .....	25
Schakelschema mechanische bediening snijsysteem .....	26
Schakelschema elektrische bediening snijsysteem .....	27
Schakelschema mechanische bediening krabbord .....	28
Schakelschema elektrische bediening krabbord .....	29
Schakelschema snijsysteem .....	30

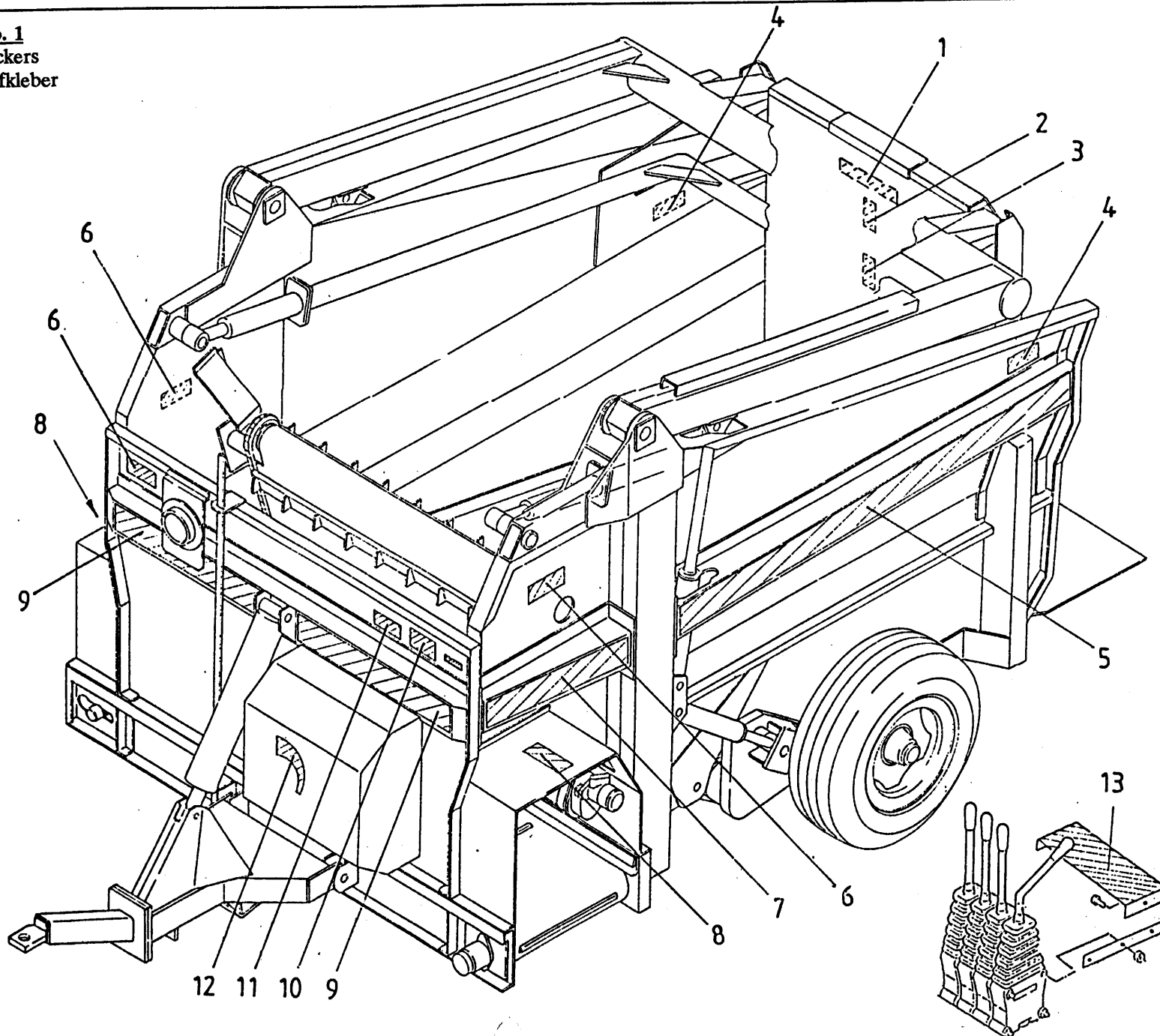
AFB.

## INHALT

Aufkleber .....	1
Grundrahmen .....	2
Seitenwände .....	3
Radachse .....	4
Vorwand .....	5
Dechsel .....	6
Bodenkette .....	7
Schrägförderkette .....	8
Seitenransportband .....	9
Laadsysteem .....	10
Schneidplatte .....	11
Silokamm .....	12
Schläuche Schneidsystem .....	13
Ventilblock .....	14
Hydraulik Schläuche .....	15/16
Mechanische Fernbedienung .....	17
Elektrische Fernbedienung .....	18
Schutzkappe Fernbedienung .....	19
Messerzylinder .....	20
Delchszylinder .....	21
Schneidrahmenzylindern .....	22
Radarmzylinder .....	23
Elektronische Waage .....	24
Pumpenheit .....	25
Schaltplan mechanische Fernbedienung Schneidsystem .....	26
Schaltplan elektrische Fernbedienung Schneidsystem .....	27
Schaltplan mechanische Fernbedienung Silokamm .....	28
Schaltplan elektrische Fernbedienung Silokamm .....	29
Schaltplan Schneidsystem .....	30

ABB.

**Afb. 1**  
**Stickers**  
**Aufkleber**

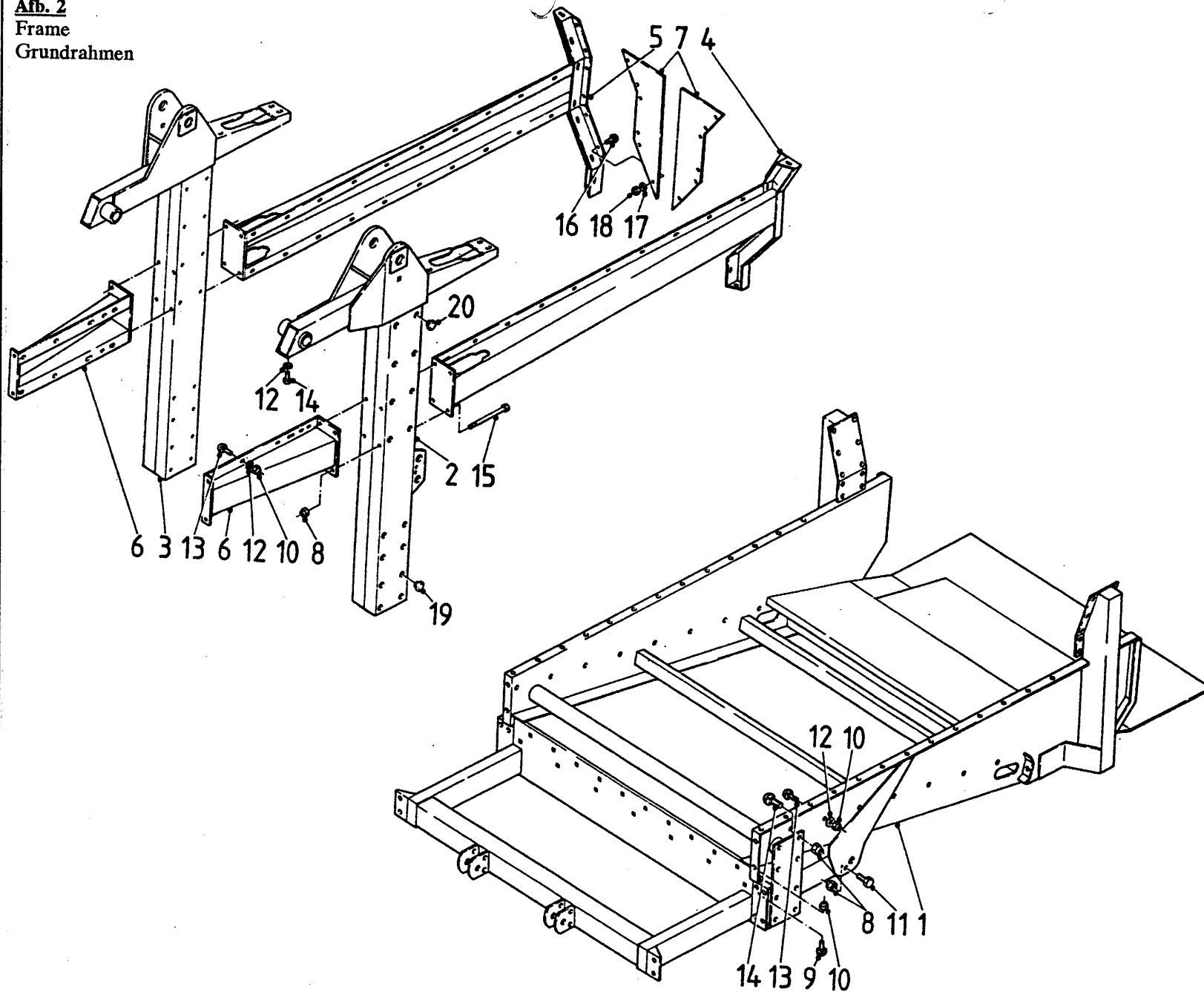


bestelnummer  
ordernummer  
num.à commander  
Bestellnummer



1	91007	
2	91153	1
3	91163	1
4	91161	2
5	91169	2
6	91164	3
7	91167	2
8	91162	2
9	91166	2
10	91160	1
11	91159	1
12	91165	1
13	91168	1

Afb. 2  
 Frame  
 Grundrahmen

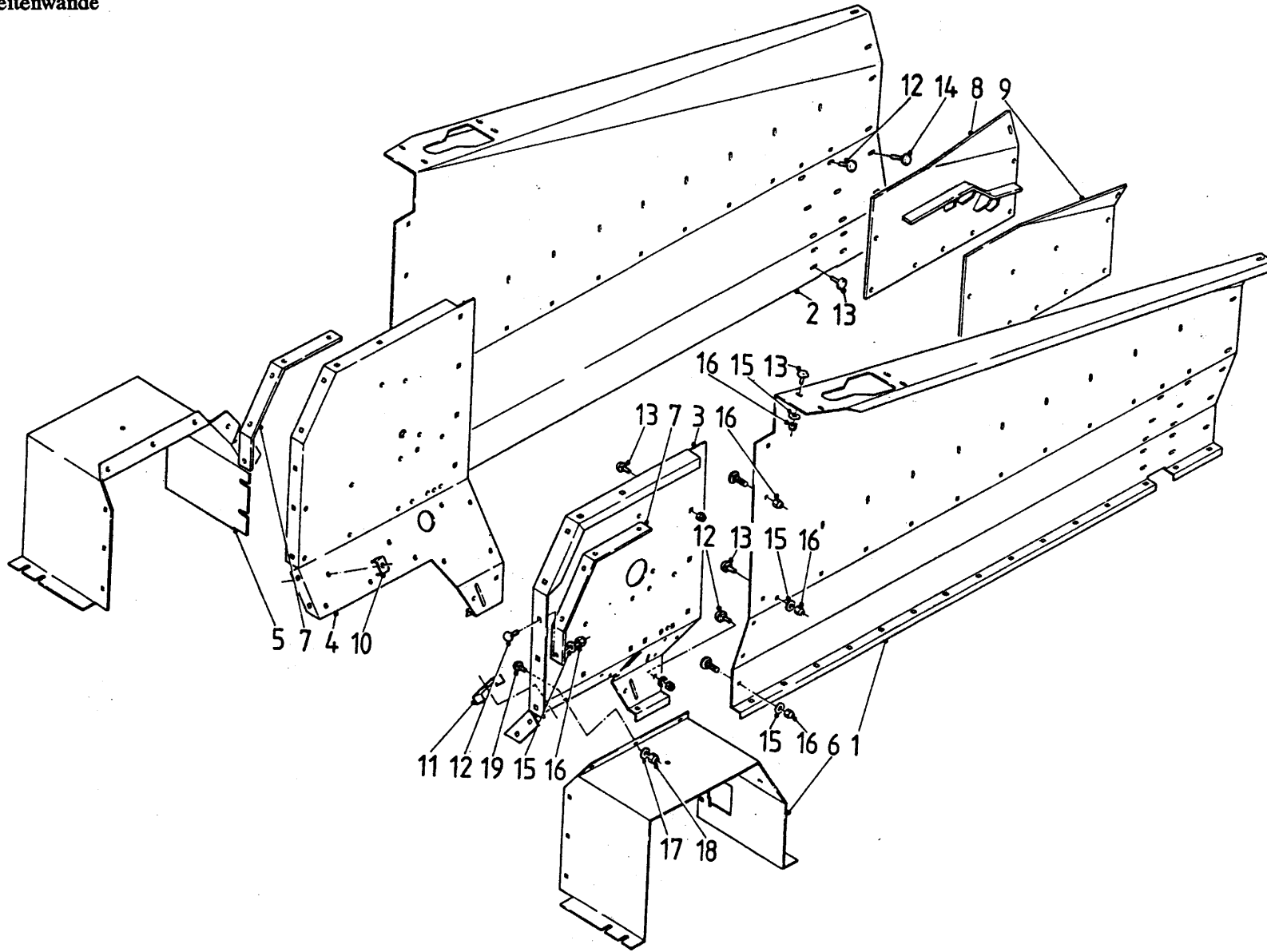


bestelnummer  
 ordernummer  
 num.à commander  
 Bestellnummer



1	10864	1	
2	10852	1	
3	10853	1	
4	10919	1	
5	10920	1	
6	10914	2	
7	30787	2	
8	86512	26	M12
9	83125	4	M10x25
10	86510	36	M10
11	81231	2	
12	85110	36	
13	83120	22	M10x20
14	84703	4	M10x20
15	81222	8	M12x210
16	83621	12	M6x22
17	85106	12	
18	86506	12	M6
19	60167	16	
20	60166	16	

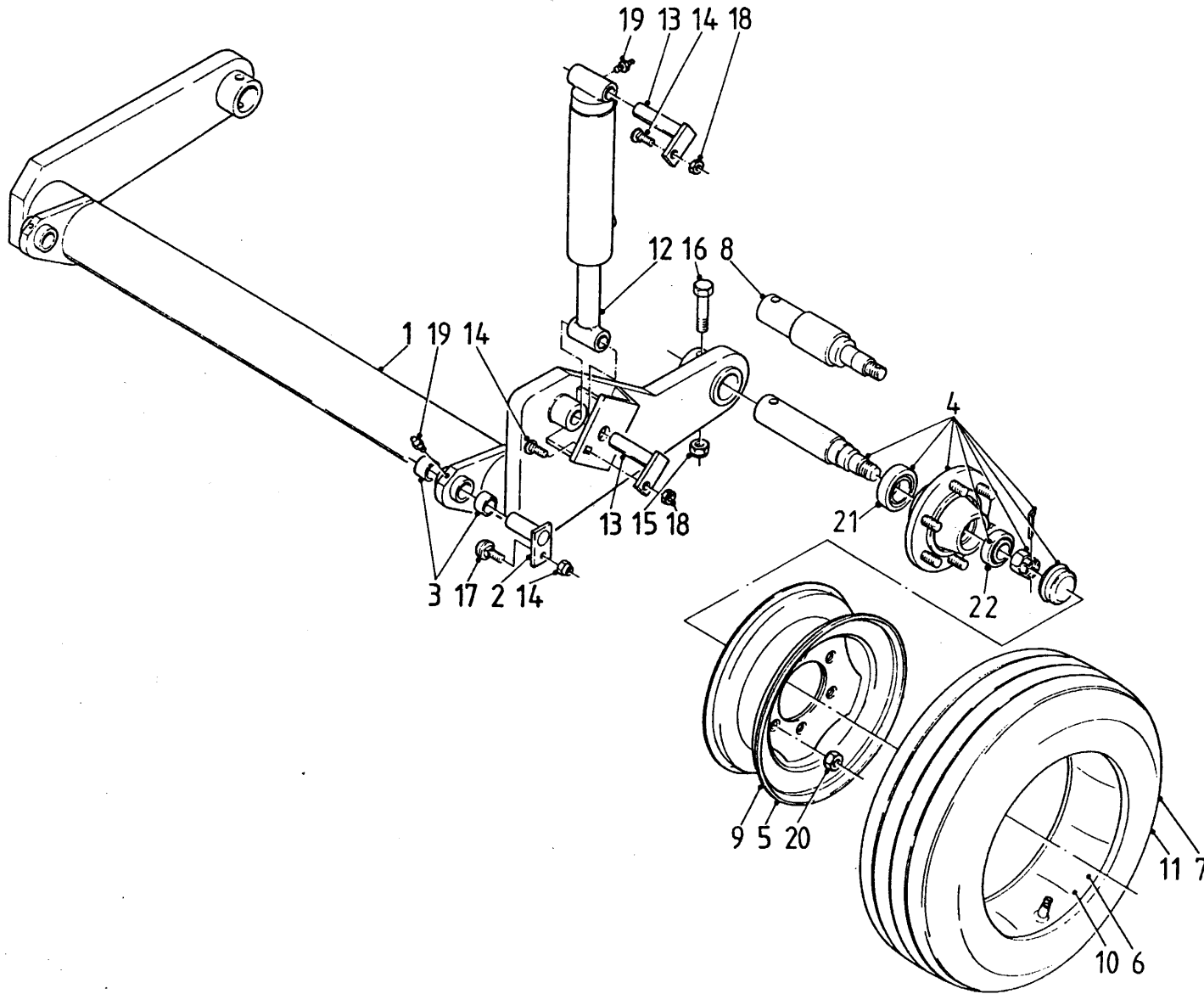
**Afb. 3**  
**Zijbeplating**  
**Seitenwände**



bestelnummer  
 ordernummer  
 num.à commander  
 Bestellnummer

1	22074	1	
2	22073	1	
3	22084	1	
4	22085	1	
5	40252	1	
6	40251	1	
7	UE385	2	
8	10925	1	
9	10924	1	
10	22091	3	
11	22089	2	
12	83125	26	M10x25
13	83120	64	M10x20
14	83136	2	M10x35
15	85110	55	
16	86510	104	M10
17	85108	6	
18	86508	6	M8
19	83816	6	M8x16

**Afb. 4**  
**Wielstel**  
**Radachse**

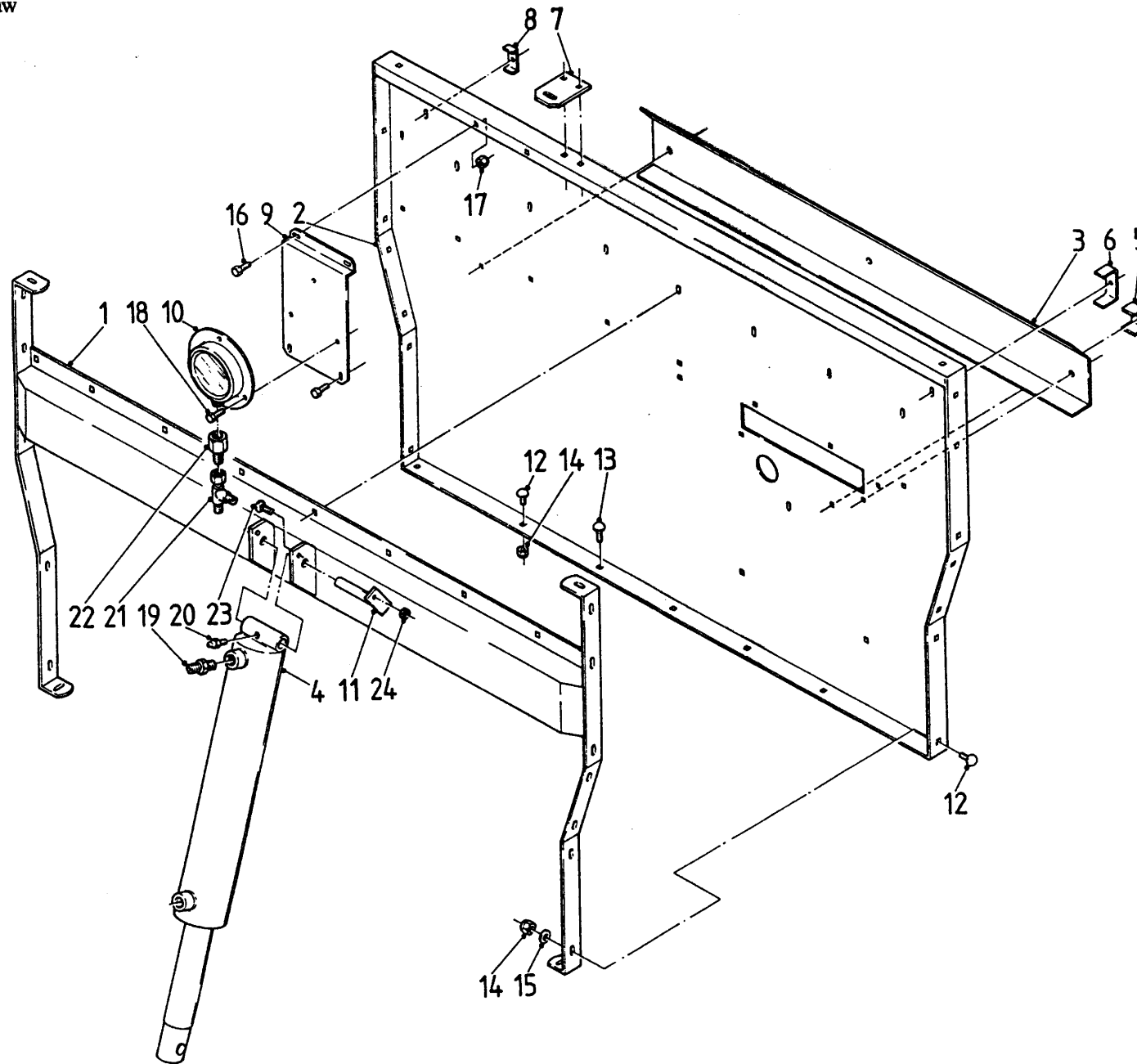


bestelnummer  
ordernummer  
num.à commander  
Bestellnummer



1	10904	1
2	UE060	2
3	UE452	4
4	90150	2
5	90153	2
6	90152	2
7	90151	2
8	90169	2
9	90156	2
10	90155	2
11	90154	2
12	50076	1
13	10917	1
14	86512	3 M12
15	86516	2 M16
16	81610	2 M16X100
17	83231	2 M12X30
18	81235	1 M12X35
19	89503	4 M6
20	86119	12 M18X1,5
21	70057	2 30211
22	70056	2 30208

**Afb. 5**  
**Frontaanbouw**  
**Vorwand**

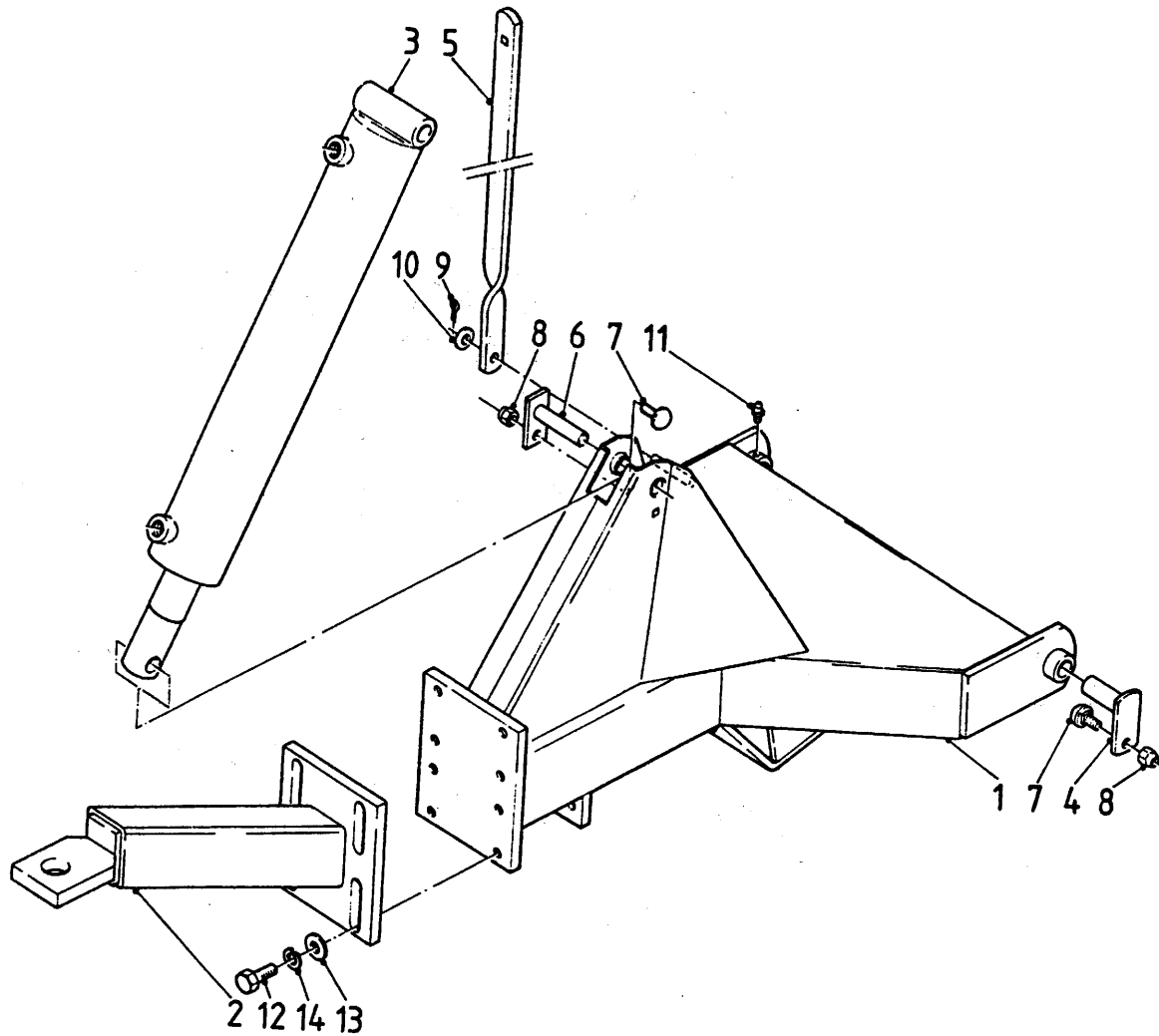


bestelnummer  
 ordernummer  
 num.à commander  
 Bestellnummer



1	10922	1
2	22078	1
3	40254	1
4	UE00200	1
5	22226	1
6	22090	1
7	UE343	1
8	22091	1
9	UE414	1
10	UE404	1
11	UE0236	1
12	83125	20 M10x25
13	83120	3 M10x20
14	86510	23 M10
15	85110	18
16	80821	4 M8x20
17	86508	4 M8
18	84703	4 M10x20
19	50104	2
20	89503	1
21	50415	1
22	50300	1

Afb. 6  
 Dissel  
 Deichsel



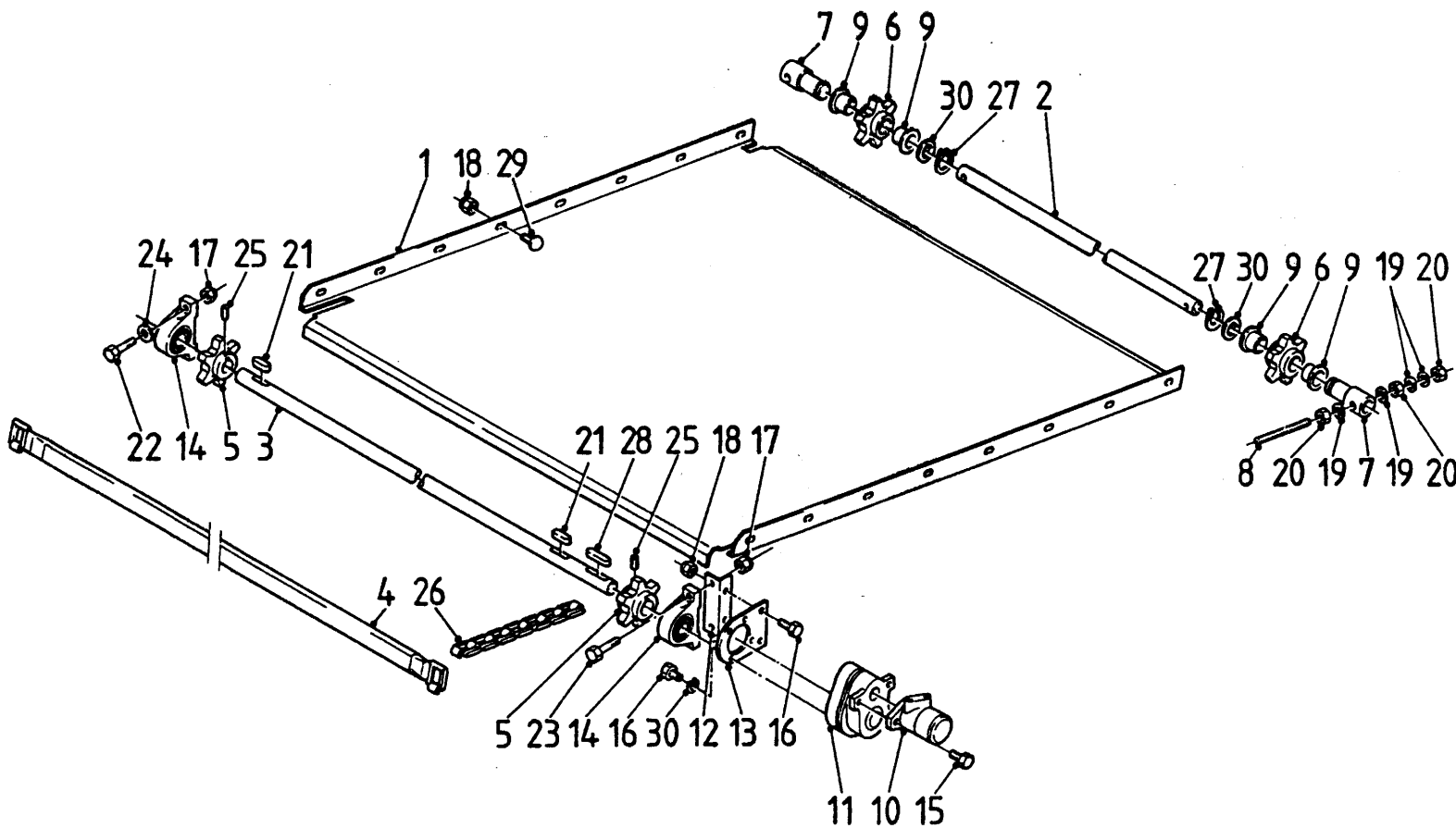
bestelnummer  
 ordernummer  
 num.à commander  
 Bestellnummer



1	10935	1
2	10980	1
3	22224	1
4	UE0287	2
5	00200	1
6	UE0236	1
7	83125	3 M10x25
8	86510	3 M10
9	85112	1
10	88225	1
11	89503	2
12	83650	4 M16x50
13	85116	4
14	86516	4 M16



**Afb. 7**  
**Aanvoerband**  
**Bodenkette**

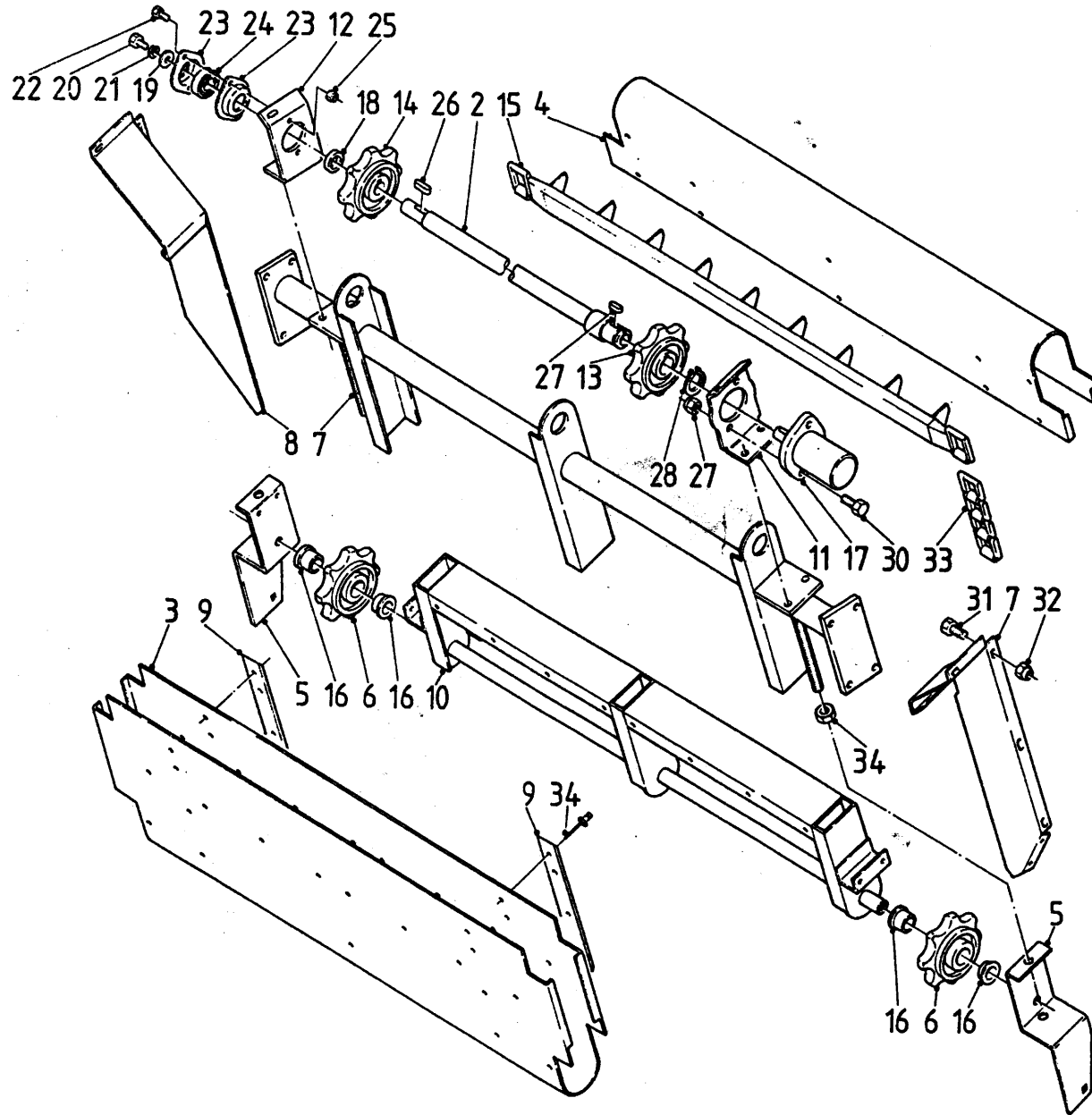


bestelnummer  
ordernummer  
num.à commander  
Bestellnummer



1	22072	1
2	30782	1
3	30783	1
4	10913	8
5	UE235	2
6	30785	2
7	30784	2
8	UE317	2
9	51766	4
10	50067	1
11	50085	1
12	UE291	1
13	UE292	1
14	70035	2
15	81231	2 M12x30
16	81020	8 M10x20
17	86512	4 M12
18	86510	20 M10
19	85116	8
20	86116	6 M16
21	88360	2
22	81246	2 M12x45
23	81255	2 M12x55
24	85112	4
25	84140	2 M10x16
26	39010	112
27	87040	2
28	88375	1
29	83120	16 M10x20
30	85341	2

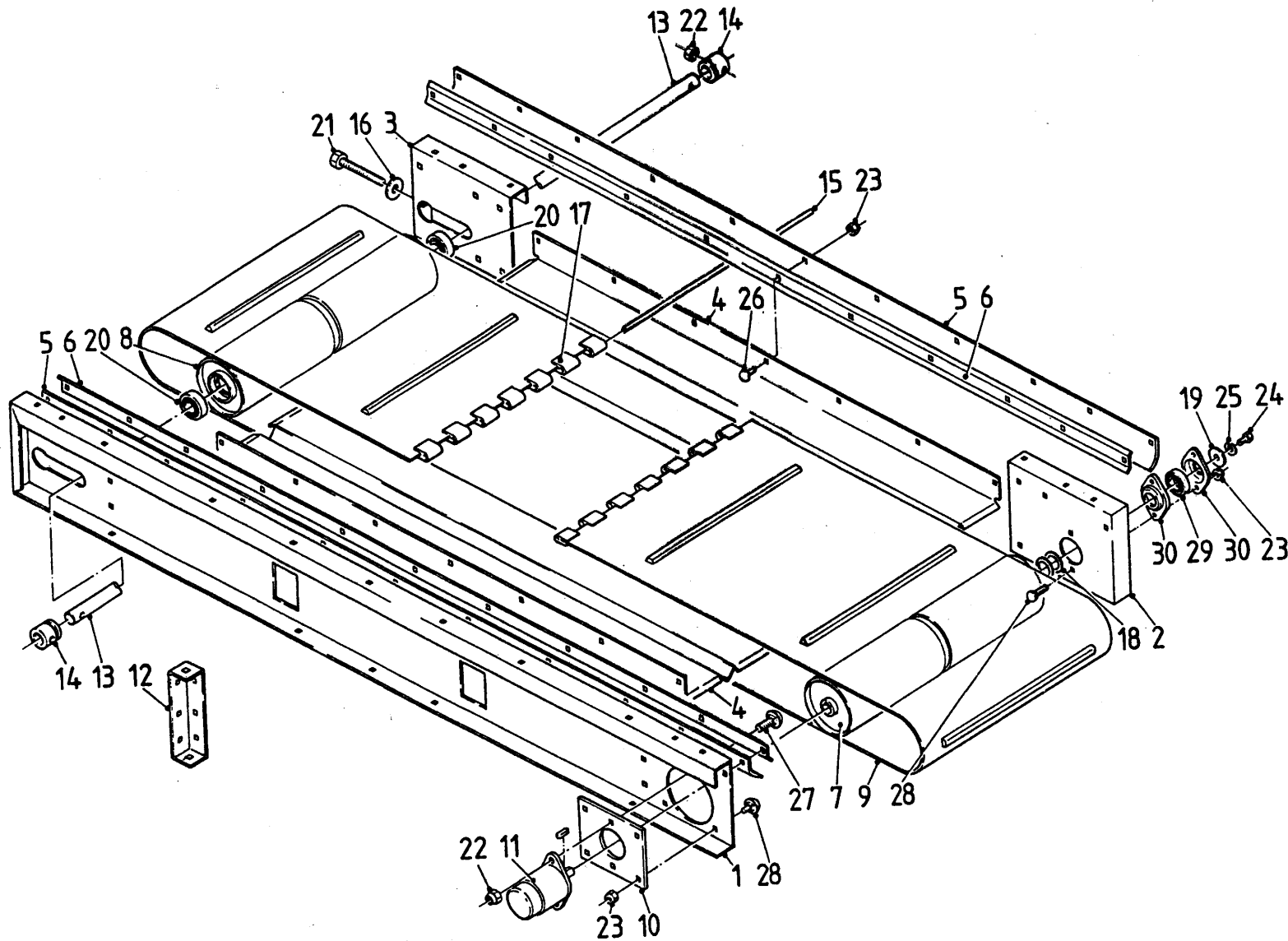
Afb. 8  
Opvoerband  
Schrägförderkette



bestelnummer  
ordernummer  
num.à commander  
Bestellnummer

1	10918	1	
2	10941	1	
3	40256	1	
4	40257	1	
5	22098	2	
6	30794	2	
7	40250	1	
8	40249	1	
9	UE316	2	
10	UE0383	1	
11	UE175	1	
12	UE176	1	
13	UE264	1	
14	UE265	1	
15	UE0294	5	
16	51767	4	
17	50078	1	
18	UE277	3	
19	HK116	1	
20	81020	1	M10x20
21	85010	1	
22	81025	2	M10x25
23	70050	1	
24	70054	1	
25	86510	2	M10
26	88340	1	
27	88335	1	
28	87042	1	
29	86512	2	
30	81235	2	M12x35
31	80816	12	M8x16
32	86508	12	M8
33	39010	40	
34	86116	2	M16

**Afb. 9**  
**Dwarsband**  
**Seitentransportband**

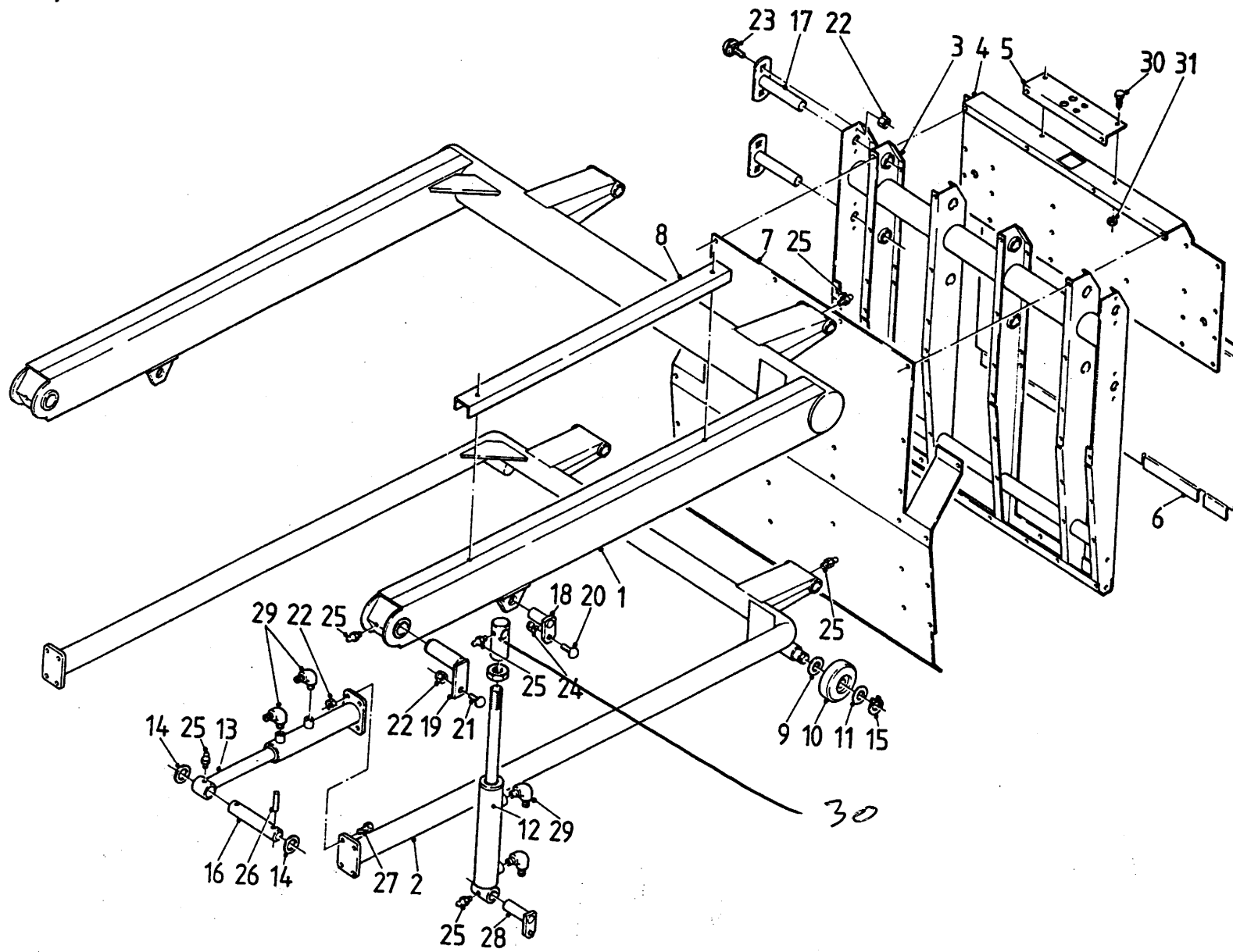


bestelnummer  
ordernummer  
num.à commander  
Bestellnummer



1	22083	1
2	22082	1
3	22081	1
4	ue371	2
5	30793	2
6	40248	2
7	10938	1
8	UE359	1
9	UE360	1
10	UE397	1
11	50077	1
12	UE013	2
13	UE369	1
14	UE399	2
15	UE178	1
16	TA195	
17	UE403	2
18	DS59V	2
19	HK116	1
20	70051	2
21	81218	2 M12x185
22	86512	4 M12
23	86510	22 M10
24	83020	1 M10x20
25	85010	1
26	83120	16 M10x20
27	83241	2 M12x40
28	83125	6 M10x25
29	70050	1
30	70054	1

**Afb. 10**  
**Laadinrichting**  
**Laadsysteem**



bestelnummer  
 ordernummer  
 num.à commander  
 Bestellnummer

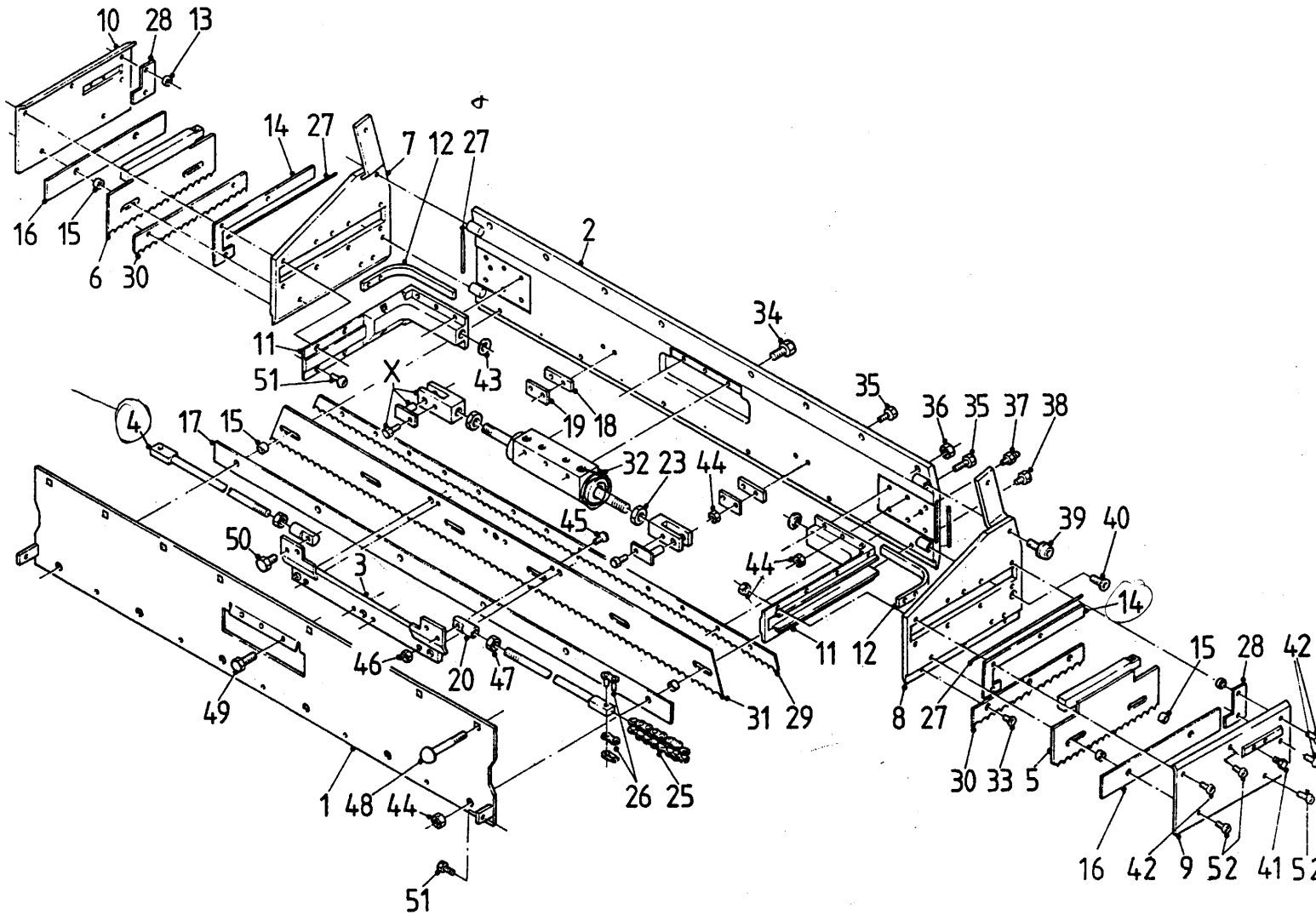


1	10911	1	
2	10912	1	
3	10916	1	
4	22104	1	
5	22103	1	
6	22102	1	
7	40255	1	
8	40253	1	
9	85340	2	
10	60017	2	
11	85341	2	
12	UE00217	2	
13	UE00523	1	
14	HS48V	2	
15	87041	2	
16	UE218	2	
17	UE0164	4	
18	UE080	2	
19	10910	2	
20	83125	2	M10x25
21	83231	2	M12x30
22	86512	18	M12
23	83236	8	M12x35
24	86510	2	M10
25	89503	12	
26	88170	4	
27	81241	8	M12x40
28	10915	2	
29	50103	4	
30	31001	2	

**Afb. 11**  
**Snijraam**  
**Schneidplatte**

6032

bestelnummer  
 ordernummer  
 num.à commander  
 Bestellnummer



1	10986	1
2	10987	1
3	10994	1
4	10966	2
5	10991	1
6	10992	1
7	10988	1
8	10989	1
9	22263	1
10	22280	1
11	30851	2
12	22289	2
13	30879	4
14	22283	2
15	30871	10
16	60160	2
17	60161	1
18	22249	2
19	22284	2
20	30849	2
X	05024	2
22	30225	2
23	86115	2
24	85218	19
25	39070	2
26	39071	4
27	60163	1
28	60162	2
29	21915	1
30	22233	2
31	22231	1
32	50083	1
33	85218	19
34	83920	3 M10x30
35	84810	16 M8x30
36	86512	8 M12
37	89503	2
38	84143	6 M8x25
39	83921	2 M10x25
40	84102	2 M10x30
41	83610	4 M6x10
42	84810	3 M8x30
43	52026	2
44	86508	24 M8
45	84142	6 M6x20
46	86506	4 M6
47	86915	2 M12
48	83280	8 M12x80
49	84802	3 M10x30
50	83920	2 M10x30
51	84809	16 M8x12
52	84806	6 M8x16

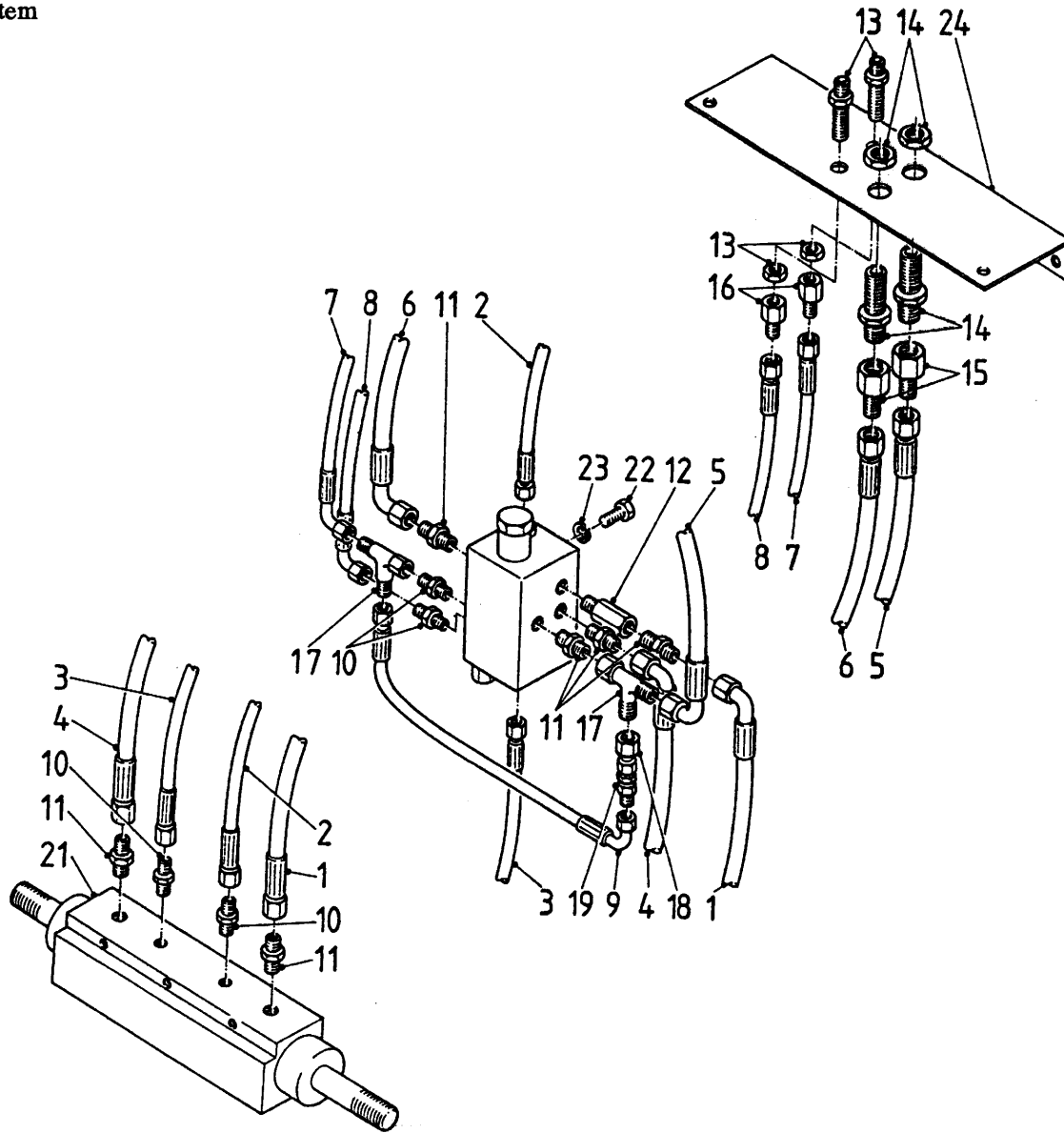
Afb. 12  
Krabarm  
Silokamm

bestelnummer  
ordernummer  
num.à commander  
Bestellnummer



5-16-9

**Afb. 13**  
**Slangen snijbord**  
**Schläuche Schneidsystem**

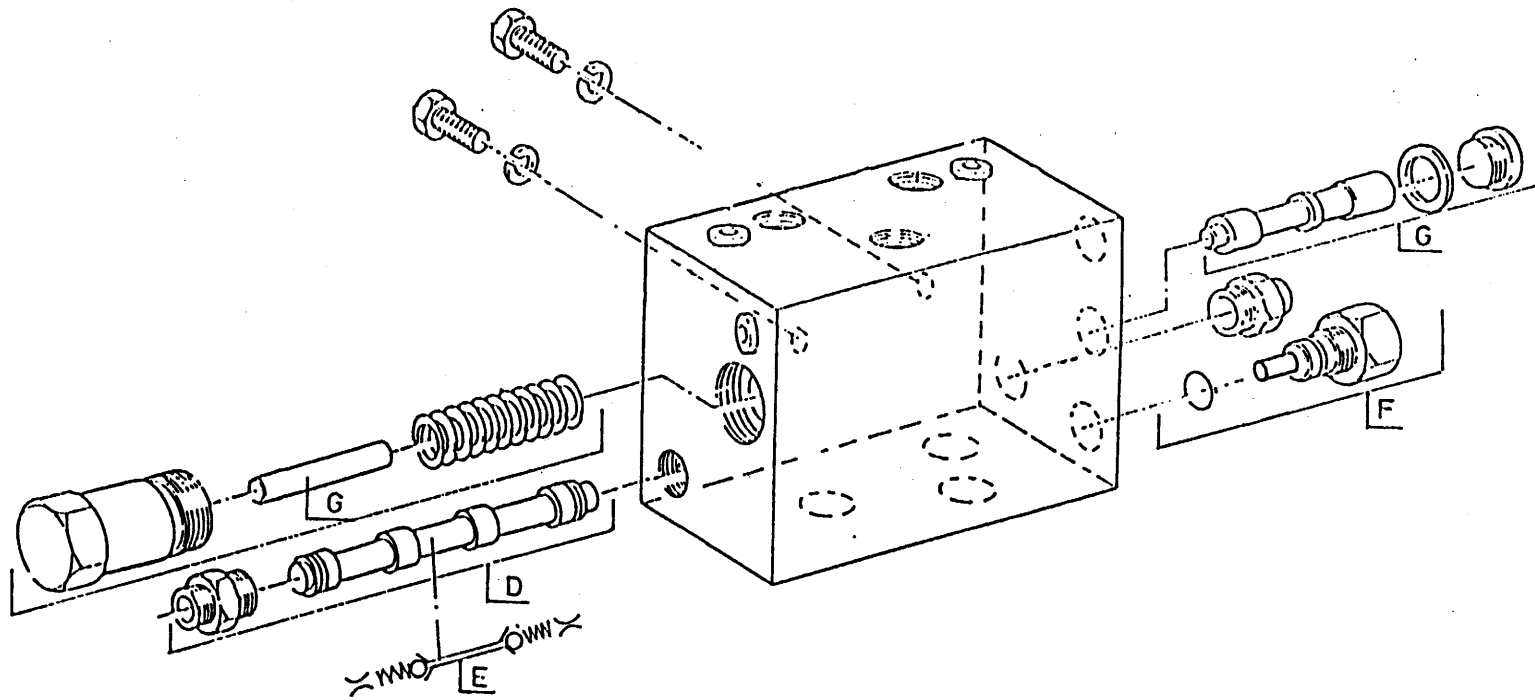


bestelnummer  
ordernummer  
num.à commander  
Bestellnummer

1	50668	1
2	50607	1
3	50742	1
4	50688	1
5	50692	1
6	50692	1
7	50719	1
8	50719	1
9	50630	1
10	50104	5
11	50102	4
12	50133	1
13	50502	2
14	50501	2
15	50161	2
16	50157	2
17	50303	2
18	50304	1
19	53018	1
20	53055	1
21	50083	1
22	80816	2
23	85008	2
24	22103	1



Afb. 14  
 Stuurventielblok  
 Ventilblock



- 14 -

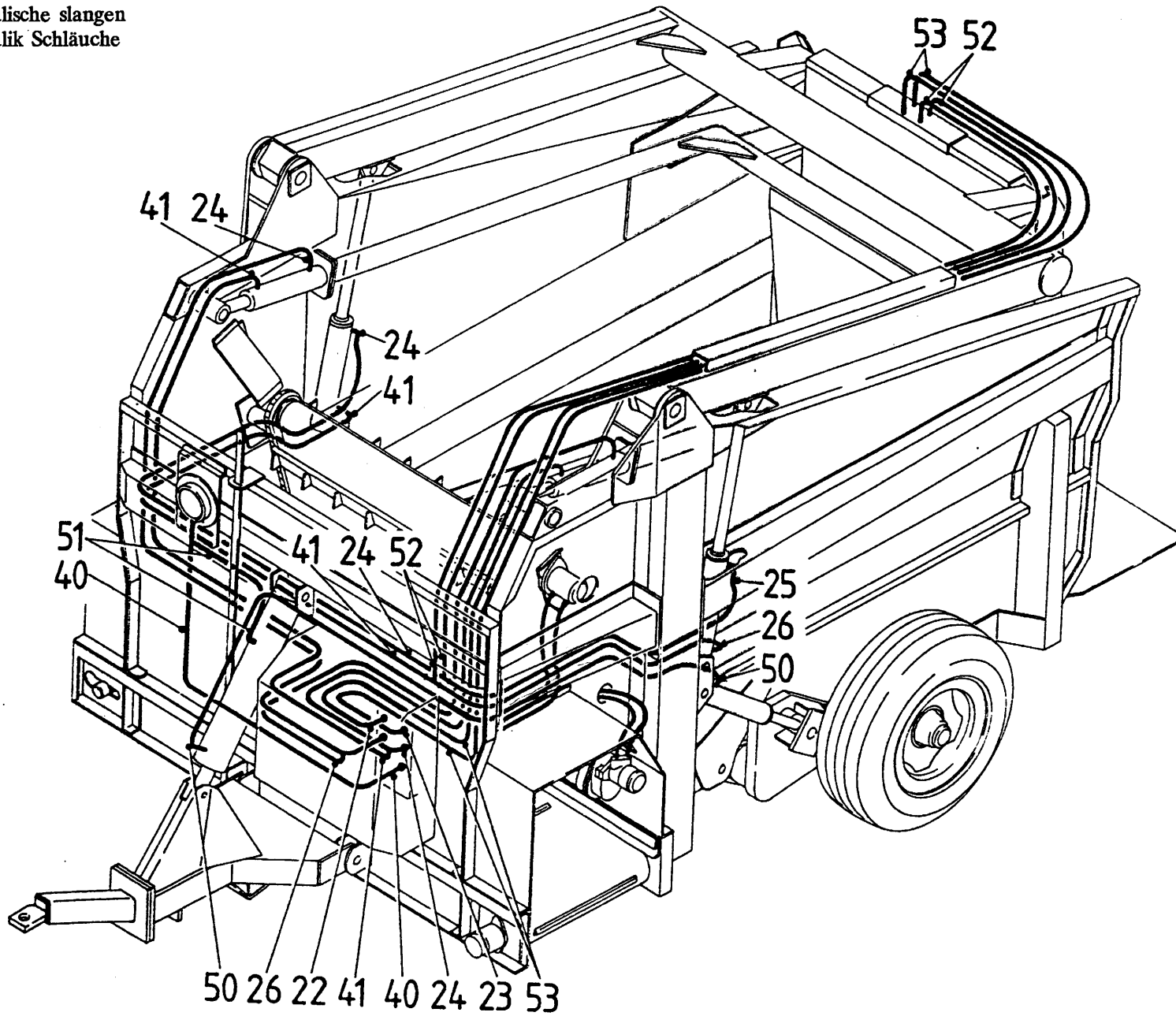
bestelnummer  
 ordernummer  
 num.à commander  
 Bestellnummer



F	05145	1
---	-------	---



**Afb. 15**  
 Hydraulische slangen  
 Hydraulik Schläuche



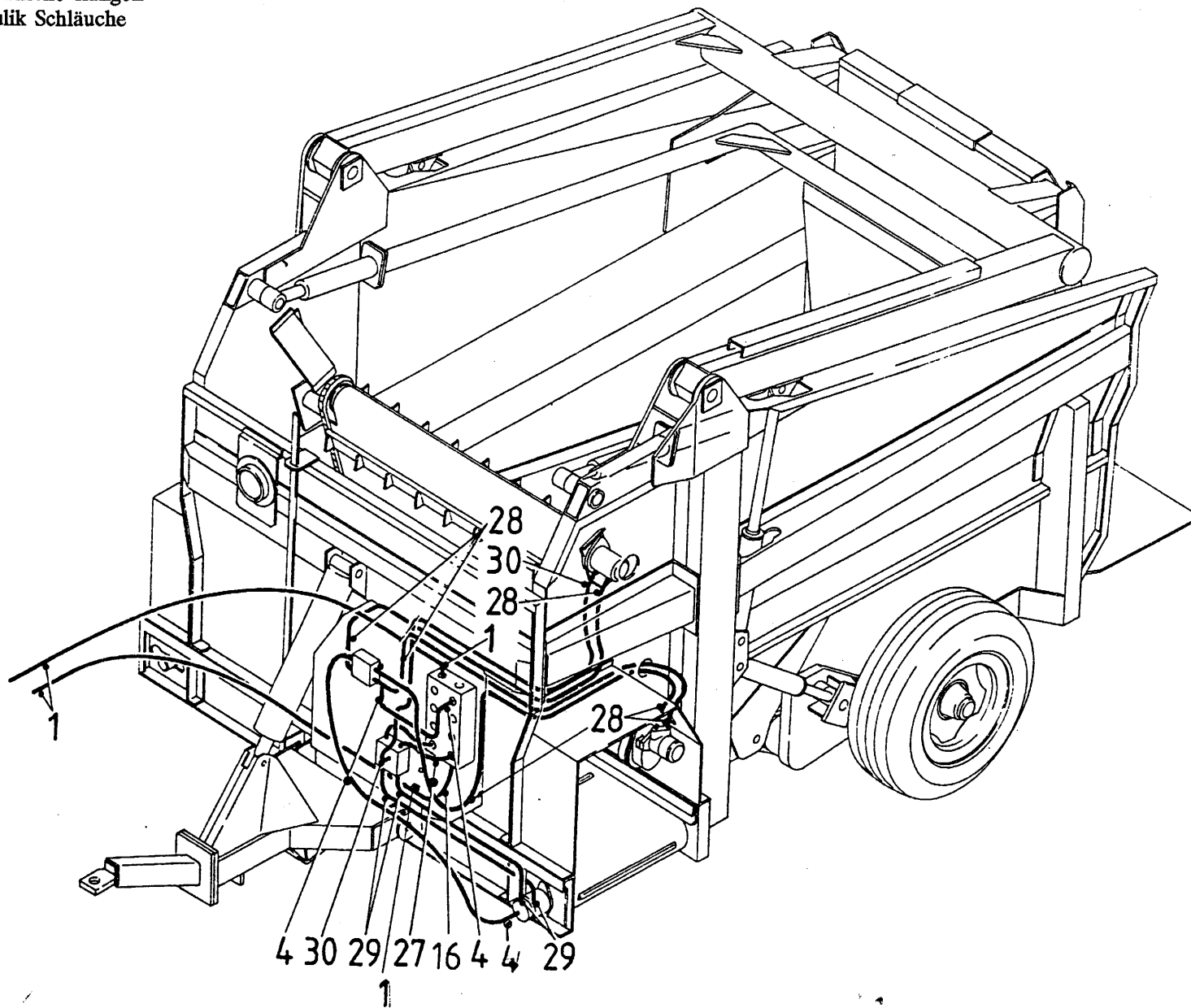
bestelnummer  
 ordernummer  
 num.à commander  
 Bestellnummer

22	50734	1
23	50735	1
24	50713	2
25	50716	1
26	50715	1
40	50637	1
41	50714	2
50	50685	1
51	50621	1
52	50518	2
53	50517	2



**Afb. 16**

Hydraulische slangen  
Hydraulik Schläuche



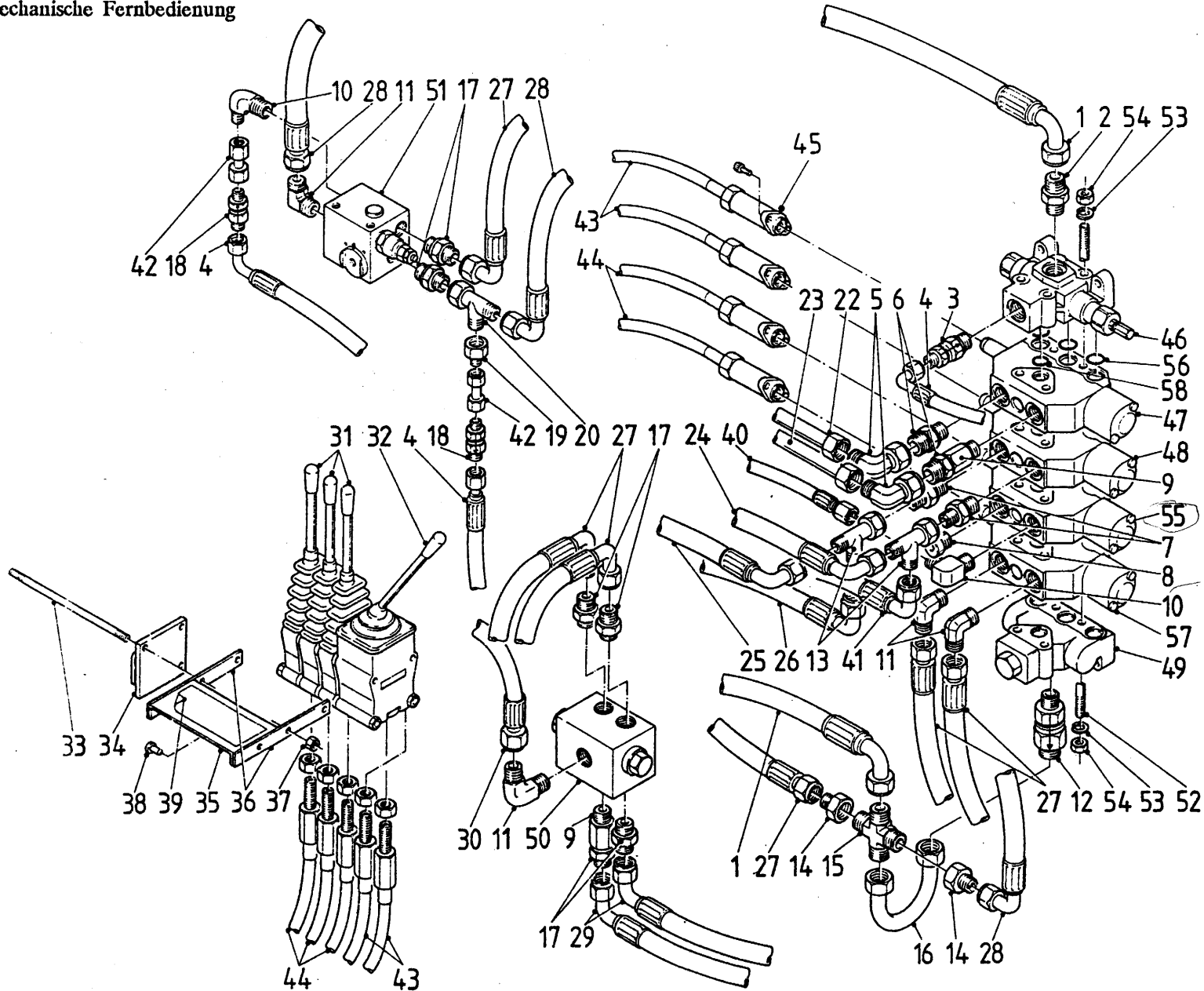
bestelnummer  
ordernummer  
num.à commander  
Bestellnummer

1	50738	2
4	50699	2
16	50735	1
27	50688	1
28	50601	3
29	50605	2
30	50604	1



**Afb. 17**

**Mechanische bediening**  
**Mechanische Fernbediening**



bestelnummer  
 ordernummer  
 num.à commander  
 Bestellnummer

1	50738	2	40	50637	1
2	50139	1	41	50714	1
3	50137	1	42	50739	2
4	50699	2	43	79053	2
5	50418	2	44	79054	3
6	50138	2	45	05114	4
7	50141	2	46	53070	1
8	53304	1	47	53071	1
9	50133	1-1	48	53072	1
10	50118	1	49	53075	1
11	50101	2-1-1	50	53064	1
12	53065	1	51	53063	1
13	50309	2	52	84026	4
14	50161	1-1	53	85008	4
15	50451	1	54	86108	4
16	50735	1	55	53073	1
17	50102	2-2-2	56	78055	3
18	53017	1-1	57	53074	1
19	50304	1	58	78056	1
20	50303	1			
21	50114	1			
22	50734	1			
23	50735	1			
24	50713	1			
25	50716	1			
26	50715	1			
27	50688	1			
28	50601	3			
29	50605	2			
30	50604	1			
31	53039	3			
32	05122	1			
33	30847	3			
34	10283	1			
35	22245	1			
36	22244	1			
37	86208	8			
38	80816	2			
39	91168	1			

50733

**Afb. 18**

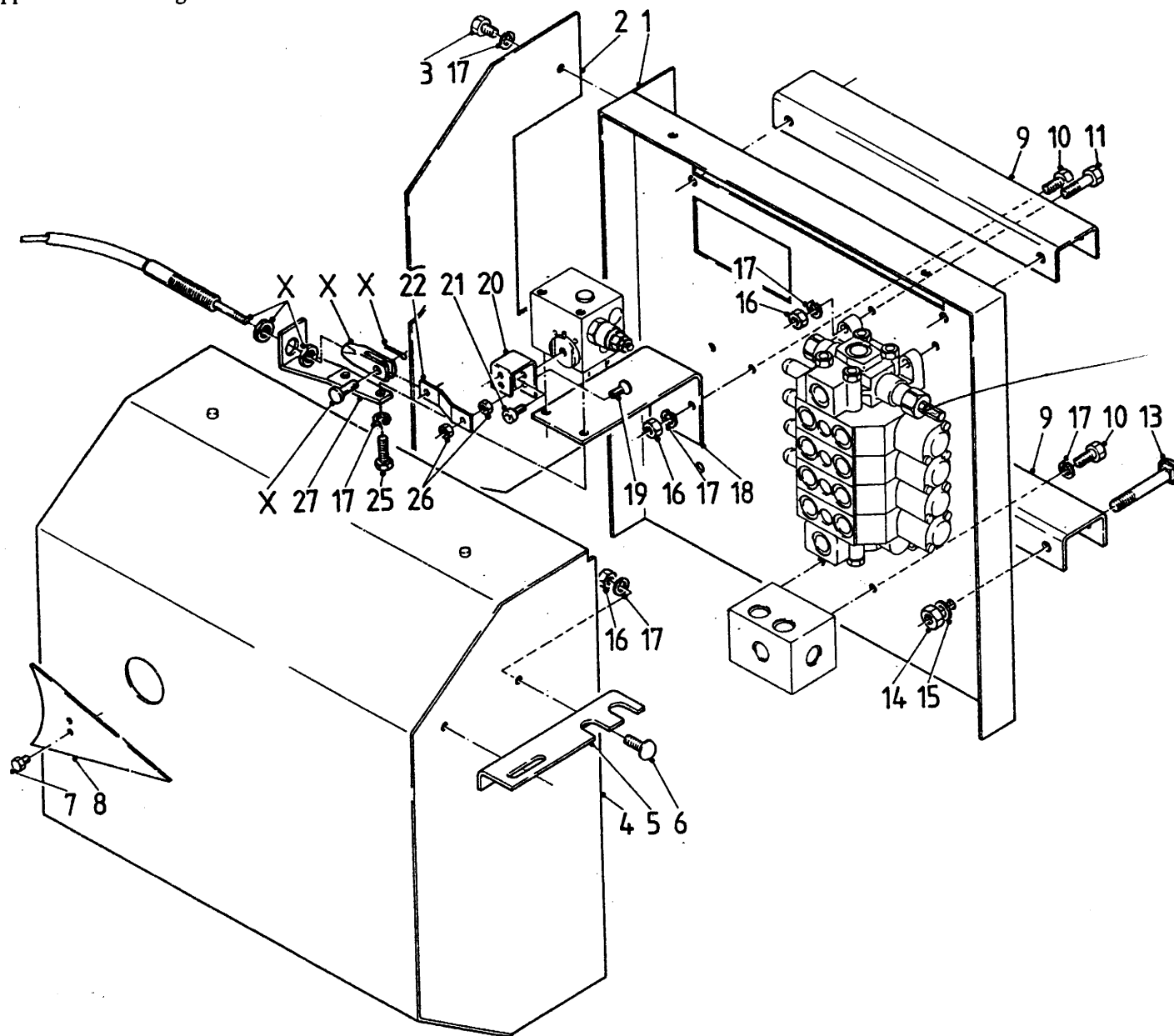
Elektrische bediening  
Elektrische Fernbediening

bestelnummer  
ordernummer  
num.à commander  
Bestellnummer



**Afb. 19**

Omkasting bediening  
Schutzkappe Fernbedienung

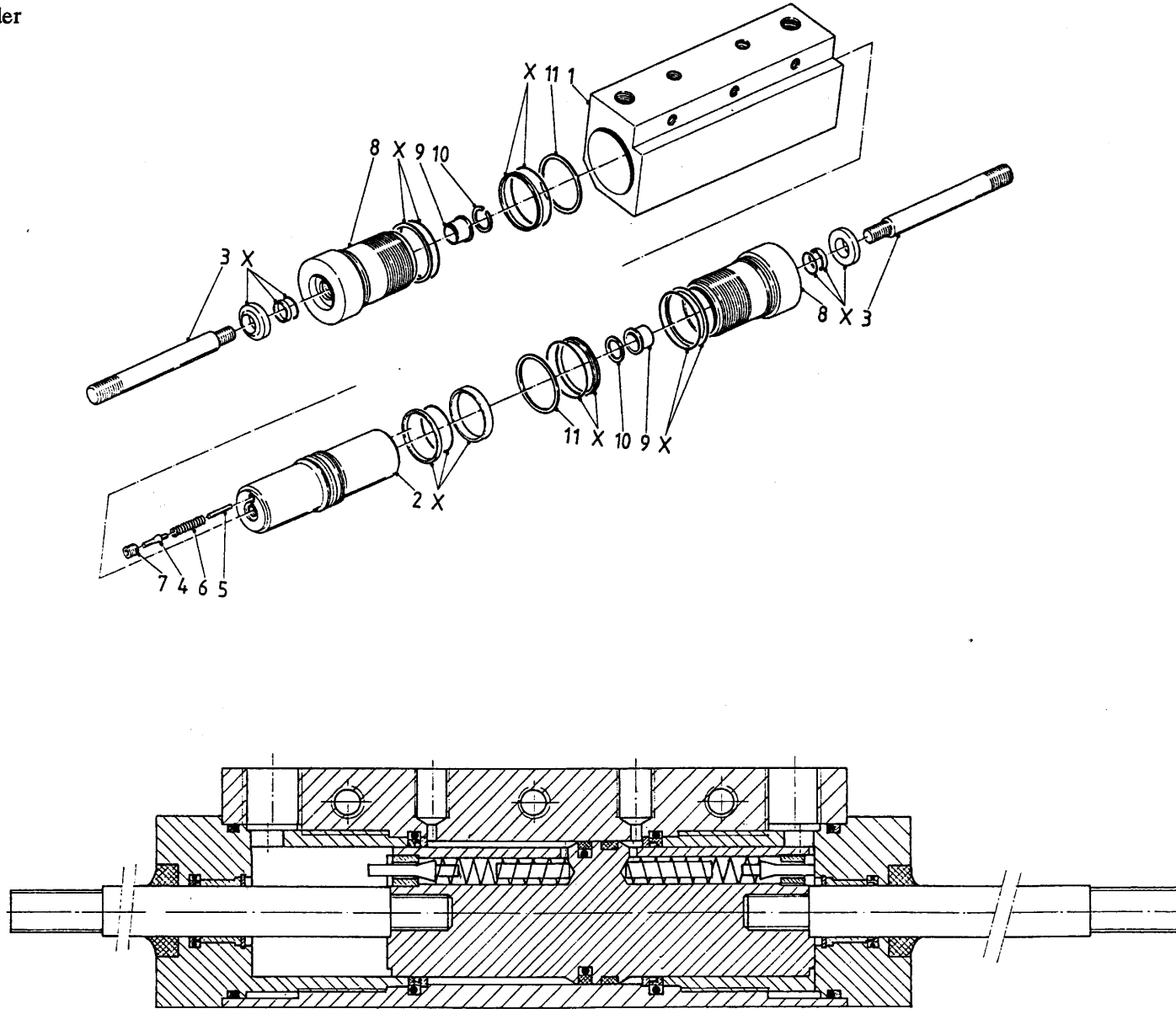


bestelnummer  
ordernummer  
num.à commander  
Bestellnummer

1	22239	1	
2	22241	1	
3	80810	2	M8x10
4	10964	1	
5	22250	1	
6	83816	2	
7	80610	2	M6x10
8	22253	1	
9	22254	2	
10	80816	4	M8x16
11	80840	4	M8x40
13	83190	4	M10x90
14	86210	4	M10
15	85010	4	
16	86208	8	M8
17	85008	12	
18	22240	1	
19	84144	1	M6x30
20	22252	1	
21	84420	1	M8x16
22	22243	1	
25	80821	2	M8x20
27	22242	1	
X	79054	1	



**Afb. 20**  
**Mescilinder**  
**Messerzylinder**

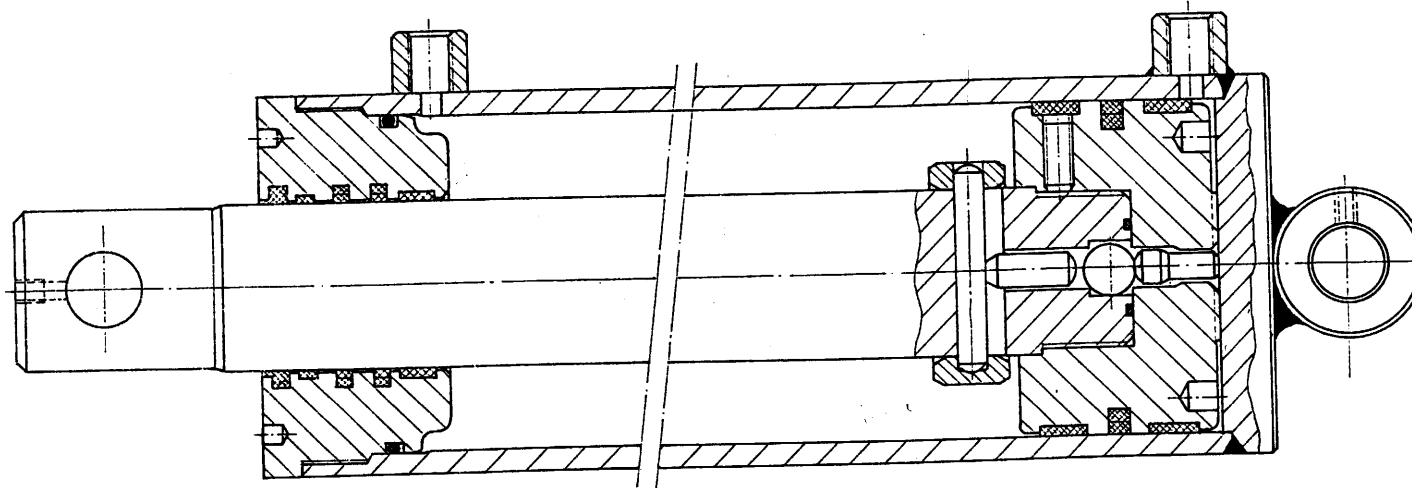
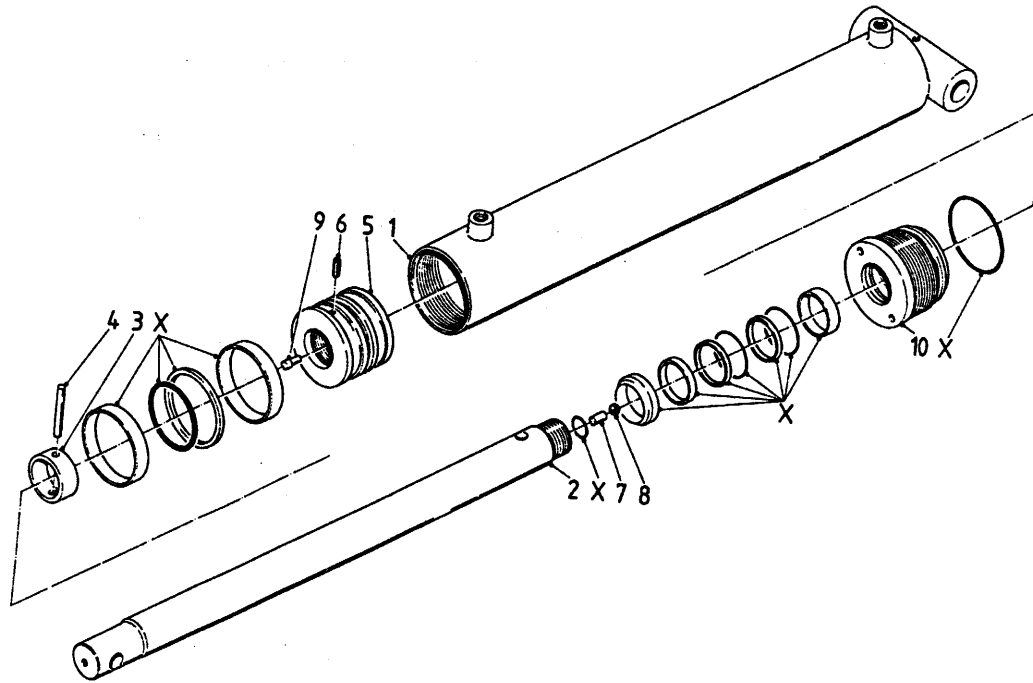


bestelnummer  
ordernummer  
num.à commander  
Bestellnummer

1	30869	1
2	30866	1
3	30867	2
4	30865	2
5	88344	2
6	65051	2
7	30870	2
8	30863	2
9	30864	2
10	83711	2
11	30868	2
X	05140	1



**Afb. 21**  
 Disselcylinder  
 Deichselzylinder

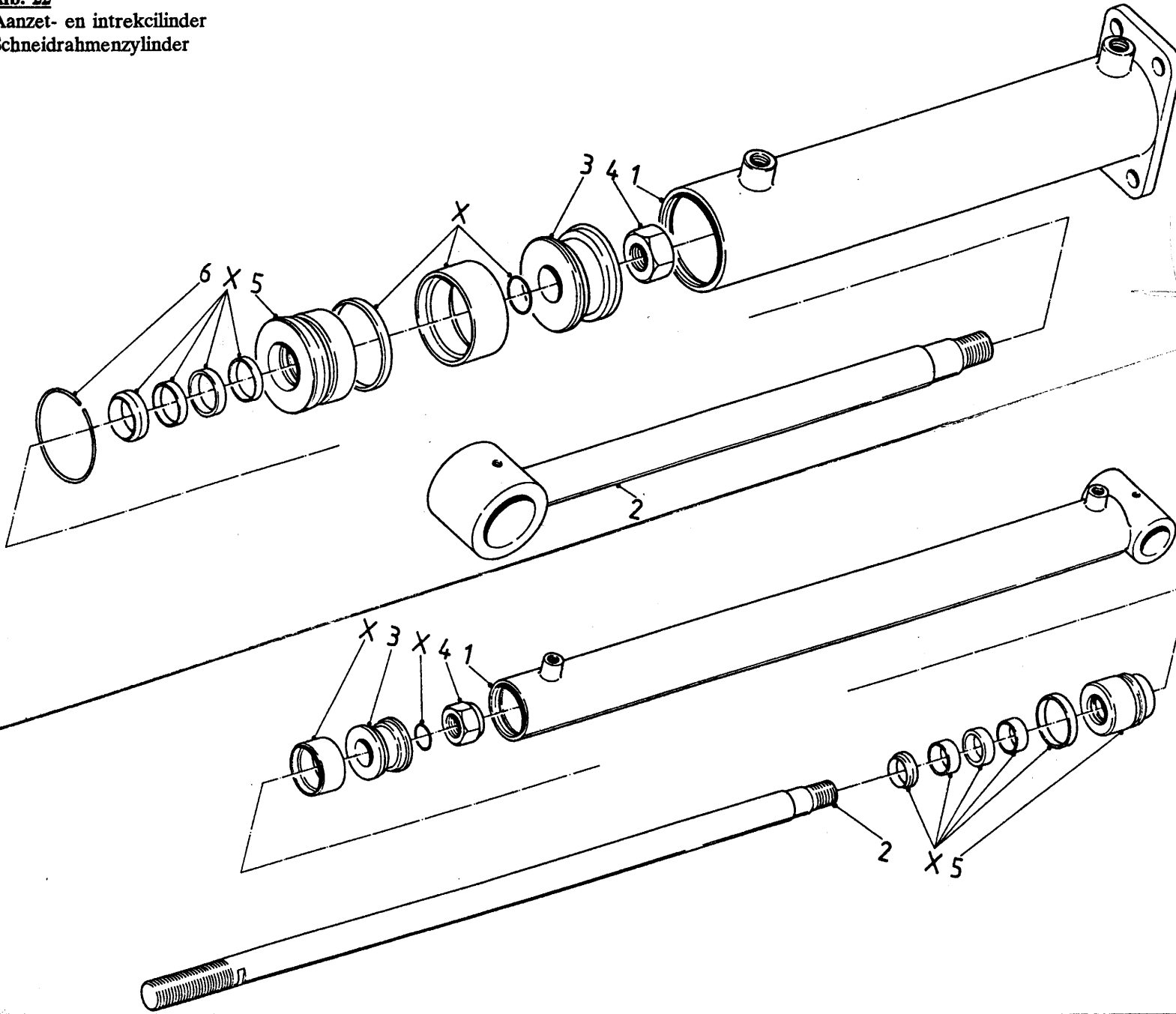


bestelnummer  
 ordernummer  
 num.à commander  
 Bestellnummer

1	11045	1
2	30905	1
3	30906	1
4	88355	1
5	30907	1
6	84146	1
7	88324	1
8	70055	1
9	30909	1
10	30908	1
X	05143	1



**Afb. 22**  
**Aanzet- en intrekcilinder**  
**Schneidrahmenzylinder**



bestelnummer  
ordernummer  
num.à commander  
Bestellnummer



UE 00523

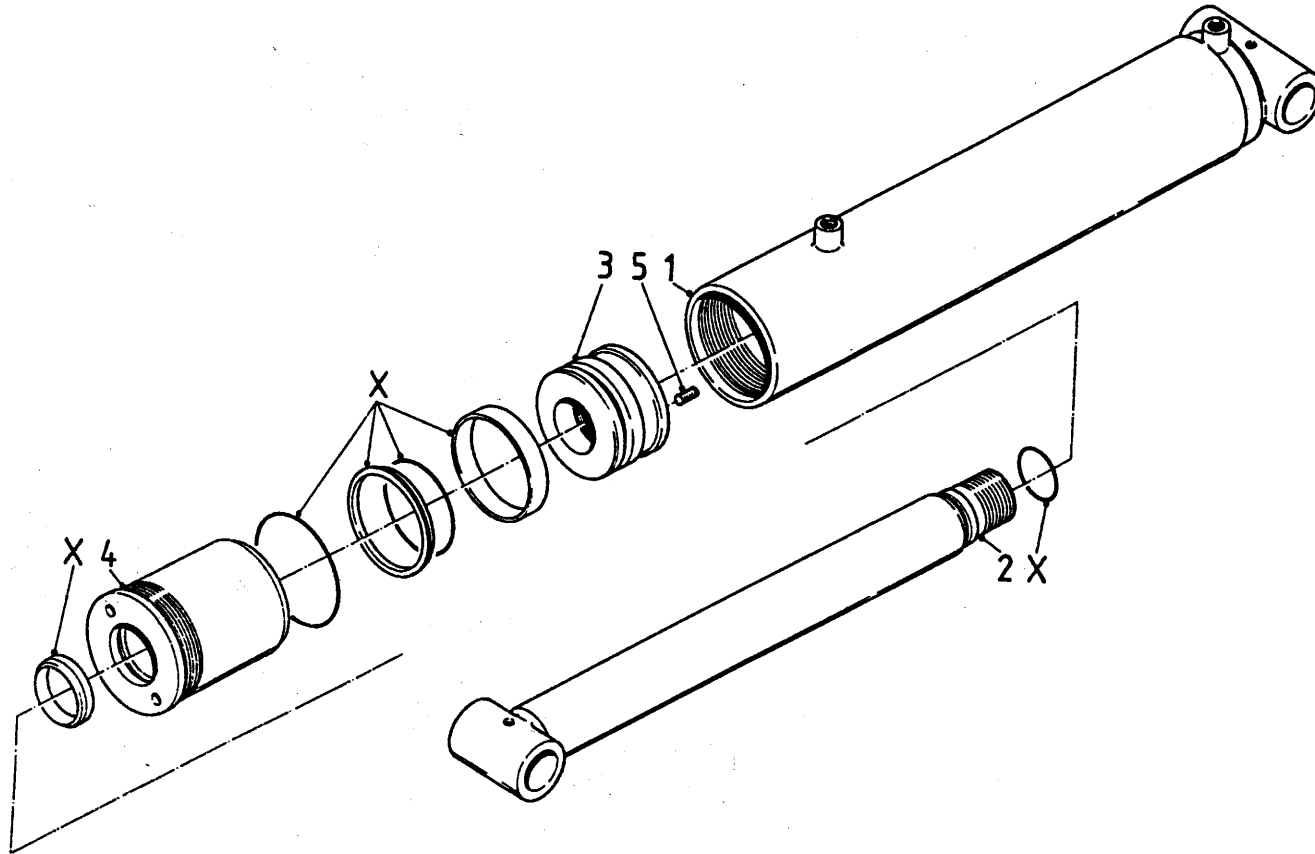
1	11041	1
2	11042	1
3	30902	1
4	86127	1
5	30903	1
6	85802	1
X	05141	1

UE 00217

1	11046	1
2	30910	1
3	30911	1
4	86227	1
5	30912	1
X	05144	1



**Afb. 23**  
**Wielarmcilinder**  
**Radarmzylinder**



bestelnummer  
 ordernummer  
 num.à commander  
 Bestellnummer



1	11042	1
2	11043	1
3	30900	1
4	30904	1
5	84610	1
X	05142	1

**Afb. 24**

Elektronisch weegsysteem  
Elektronische Waage

bestelnummer  
ordernummer  
num.à commander  
Bestellnummer



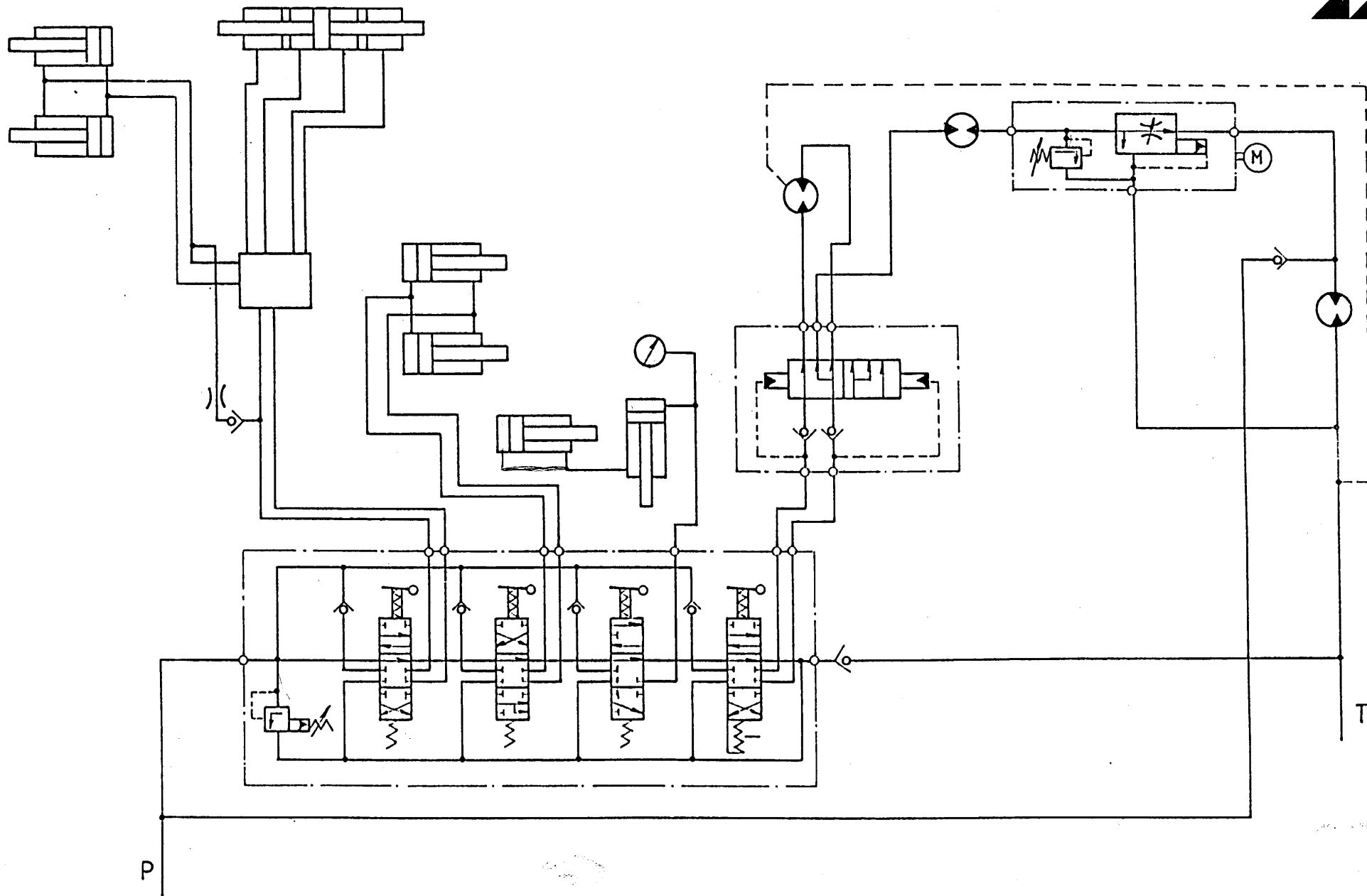
**Afb. 25**  
Pompunit  
Pumpeinheit

bestelnummer  
ordernummer  
num.à commander  
Bestellnummer



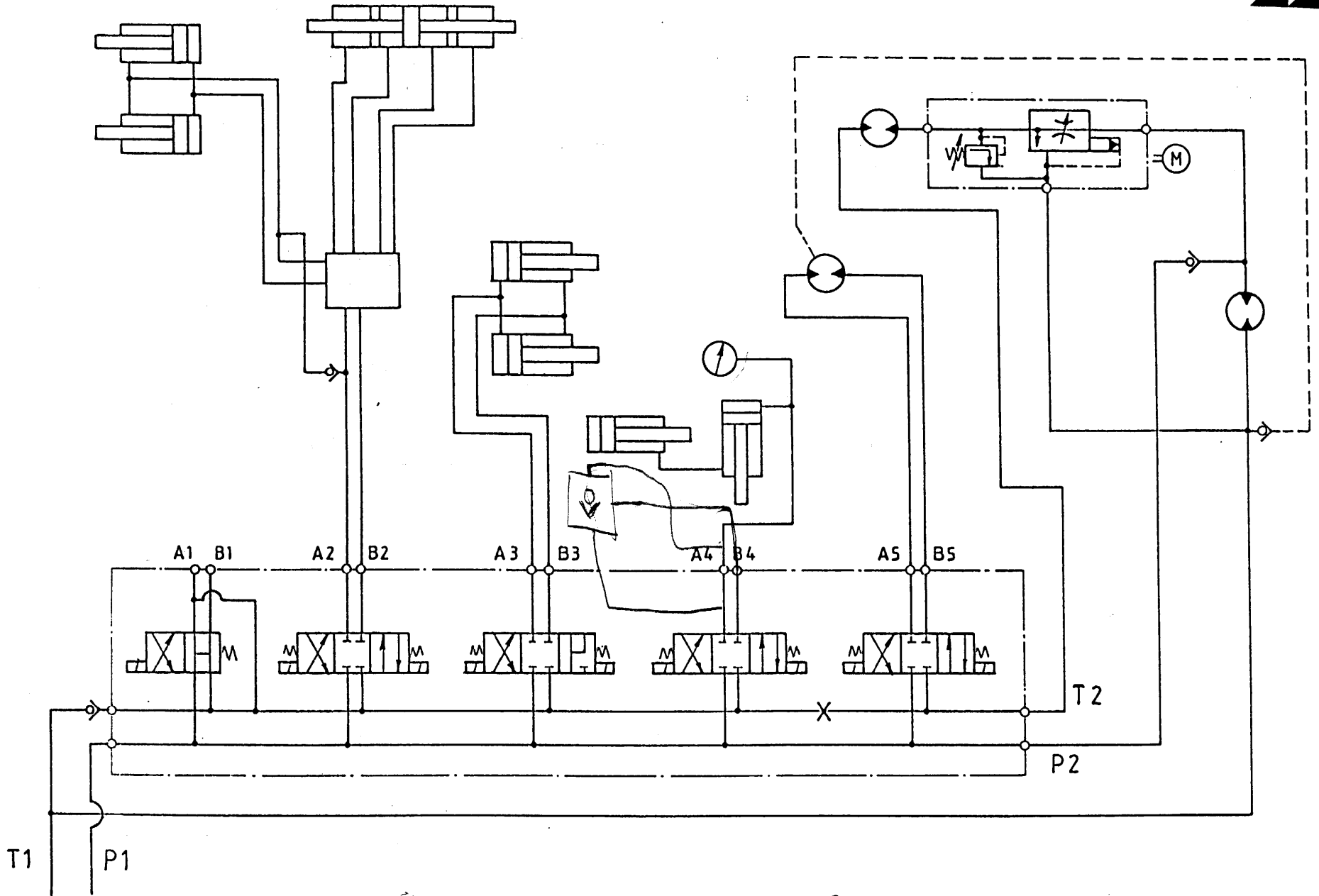
Afb. 26

Schakelschema mechanische bedienung snijsysteem  
Schaltplan mechanische Fernbedienung Schneidsystem



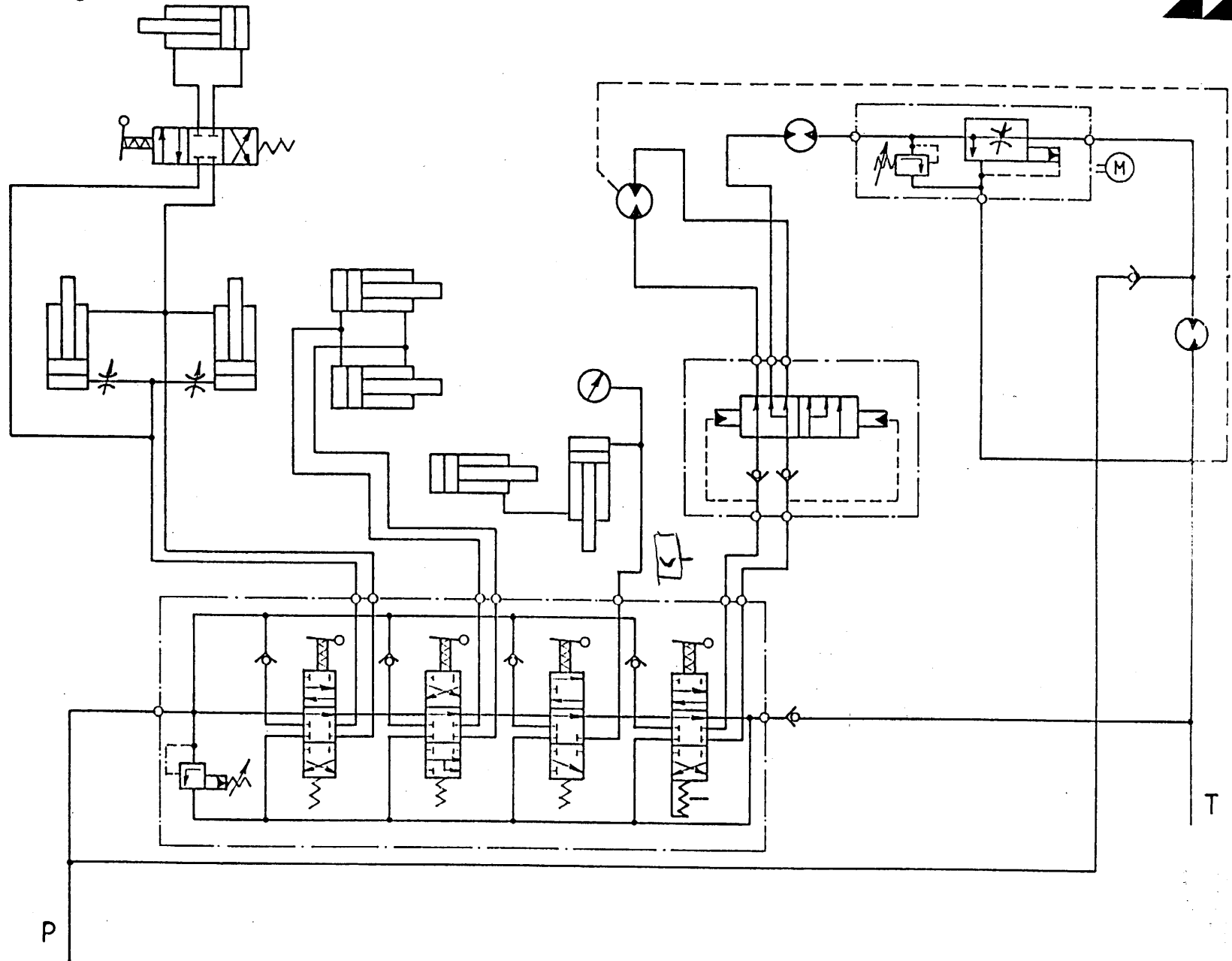
Afb. 27

Schakelschema elektrische bediening snijstelsysteem  
Schaltplan elektrische Fernbedienung Schneidsystem



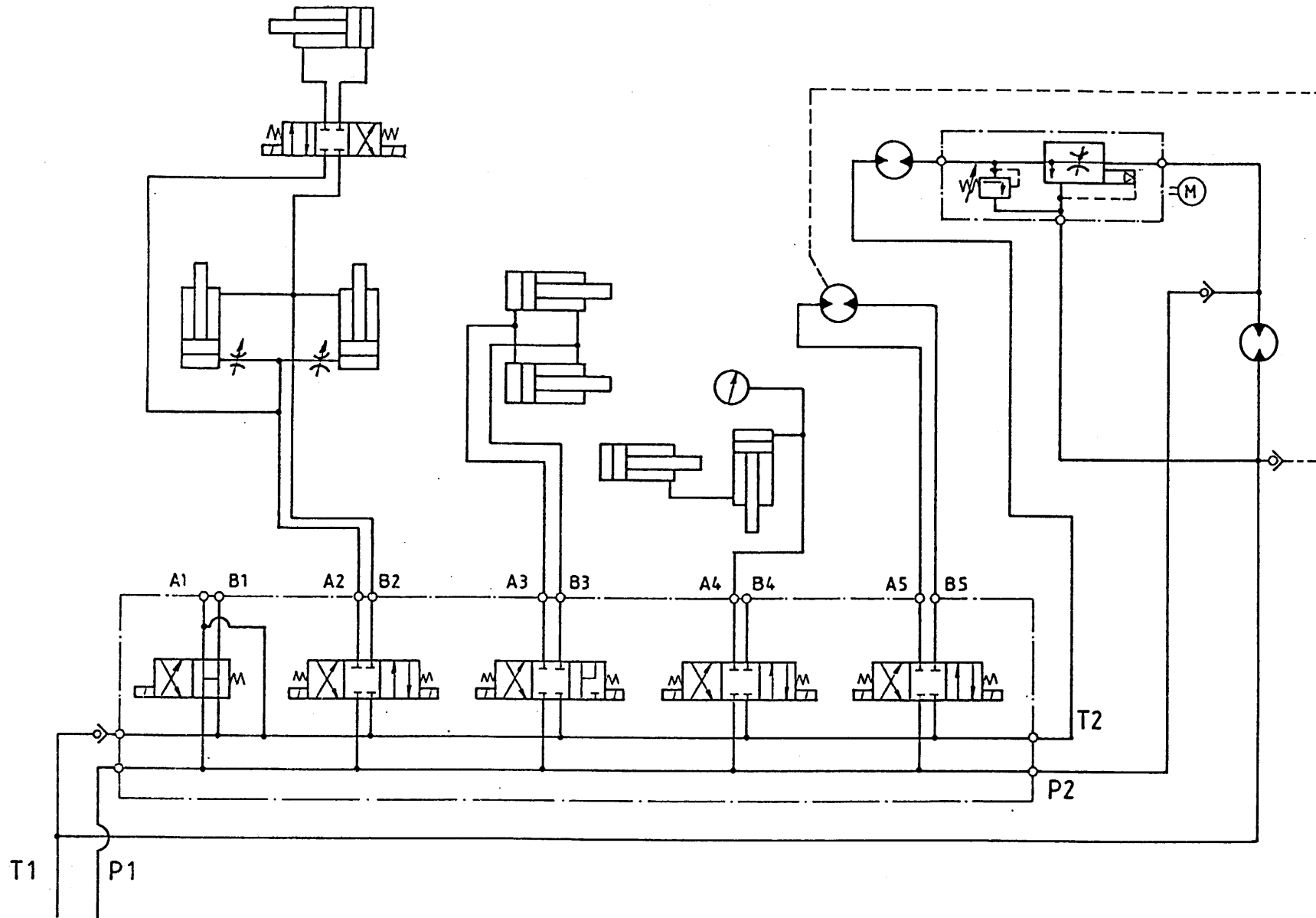
**Afb. 28**

Schakelschema mechanische bedienung krabordeem  
Schaltplan mechanische Fernbedienung Silokamm

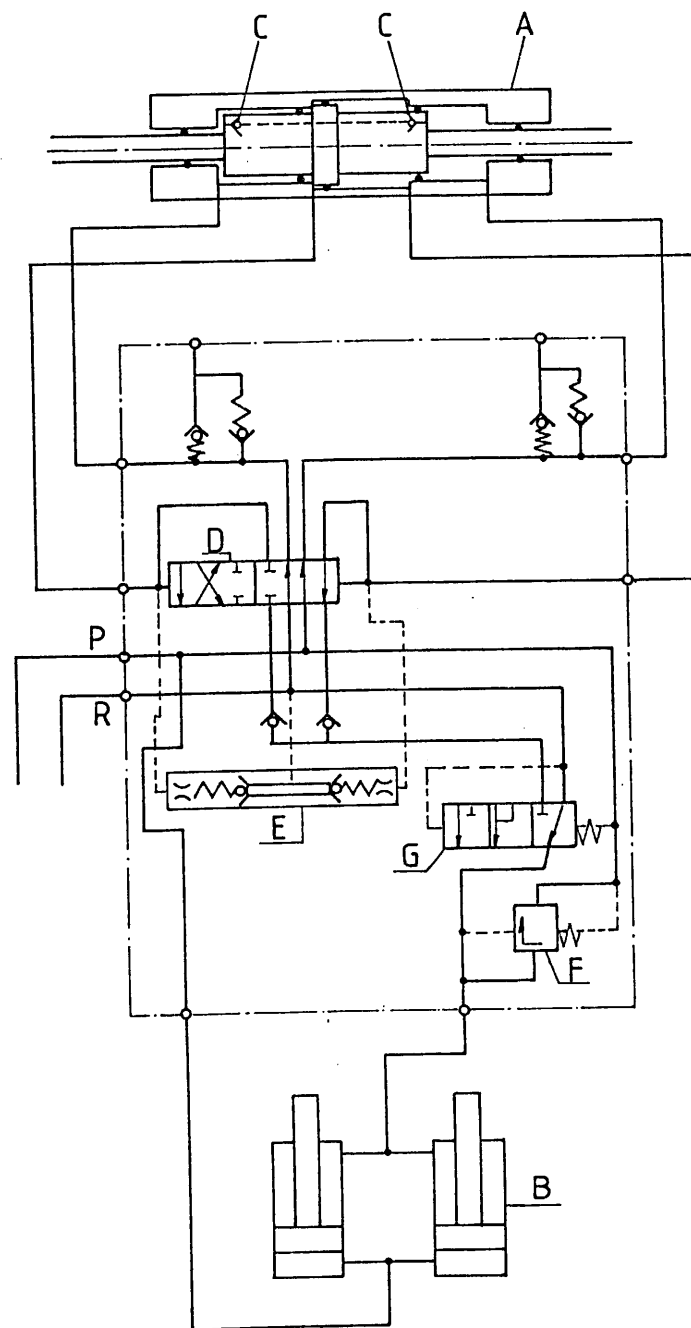
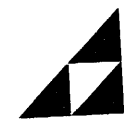


Afb. 29

Schakelschema elektrische bedienung krabbord  
Schaltplan elektrische Fernbedienung Silokamm



**Afb. 30**  
Schakelschema snijsysteem  
Schaltplan Schneidsystem







**TRIOLET MULLOS BV**  
Smitsbreeweg 2, 7581 HE Losser, Holland  
Postbus 202, 7580 AE Losser / Postfach 202, 7580 AE Losser, Holland  
Telefoon 05423-81700 / Tel. (+) 31 - 5423-81700  
Telefax 05423-87605 / Telefax (+) 31 - 5423-87605