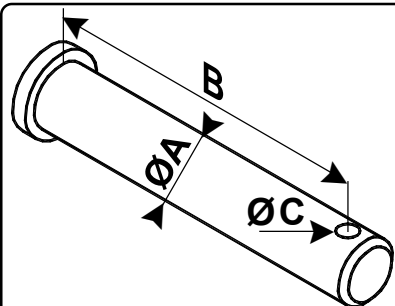
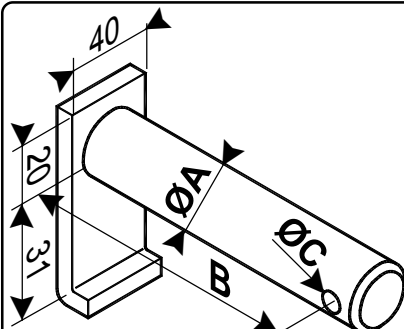


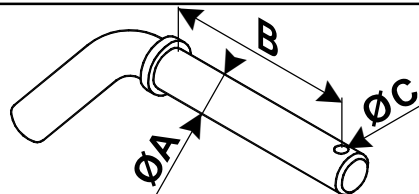
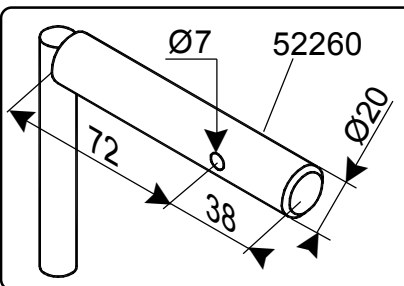
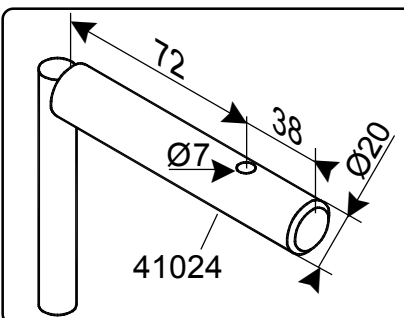
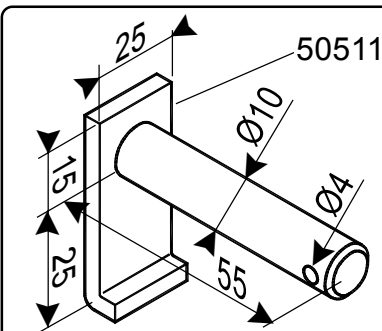
AXES STANDARD GOUPILLÉS EPAULÉS
STANDARD AXLES WITH PIN BOLT AND ABUTMENT
EJES STANDARD CON PASADOR Y TOPE
STANDARD ACHSEN MIT STIFT UND STÜTZE



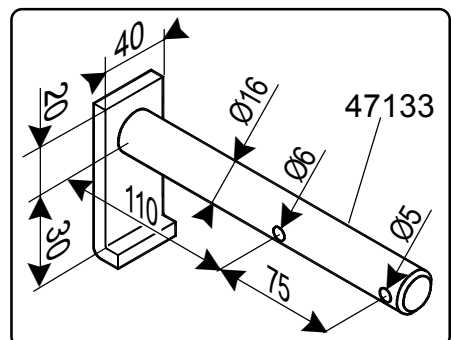
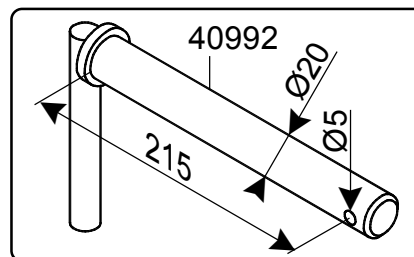
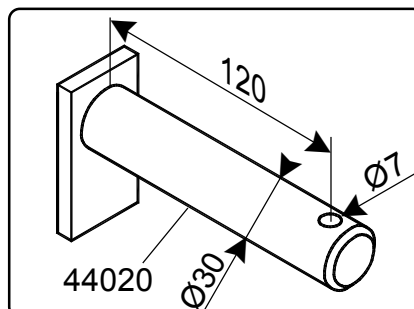
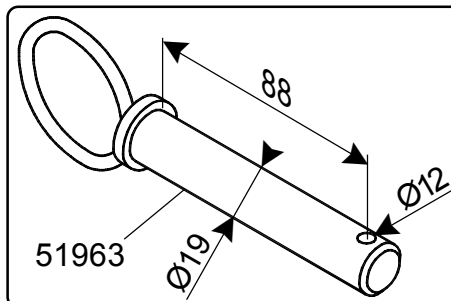
A	B	C	N°
6	15	2	24917
8	19	2	L80422
10	23	3	24922
12	28	3	L80423
14	33	4	24923
16	38	4	24924
19	88	12	30507
19	114	12	31338
19	166	12	42117
20	44,5	5	57277
20	46	5	38318
20	50	5	43709
20	56	5	57276
20	57	5	57275
20	61,5	5	38319
20	78	5	52073
20	91	5	51649
20	94,5	5	57274
20	120	5	56067
20	150	5	56066
20	251,5	5	57273
20	265	12	40254
20	288	12	39517
20	370	12	34630
20	430	12	39512
20	520	12	34621
20	578	12	40940
20	648	12	38126
20	745	5	46989
22	128	12	36654
25	88	12	38943
25	105	12	48777
25	113	12	42266
25	136	12	56515
25	142	12	53118
25	150	12	48776
25	171	5	58390
25	278	12	56233
25,4	160	7	56897
28	103	12	54092
28	257	12	53142
40	250	7	40991



A	B	C	N°
20	63	5	42339
20	78	5	44315
20	96	5	49016
20	107	5	48263
20	119	5	42438
20	160	5	47128
20	184	5	43823



A	B	C	N°
12	70	5	57348
19	101	12	42058
19	166	12	35898
20	172	10	58106



9909202C

16.11.2004

Tecnoma
 technologies

S.A.S. Capital 1174400€ - B.P. 195 - 51206 EPERNAY - FRANCE
 Tél. 03.26.51.99.99 - Fax : 03.26.51.83.51
 R.C.S. EPERNAY B 350 484 309 - APE 293D

1031.4